

SUPPLEMENTARY MATERIAL

Responses to ixekizumab in male and female patients with psoriatic arthritis: results from two randomized, phase 3 clinical trials

Lihi Eder, MD, PhD¹; Hans-Peter Tony, MD, PhD²; Satish Odhav, MD³; Eva Galindez Agirregoikoa, MD⁴; Mariusz Korkosz, MD⁵; Sergio Schwartzman, MD⁶; Aubrey Trevelin Sprabery, MD⁷; Amanda M Gellett, PhD⁷; So Young Park, PhD⁷; Clinton C Bertram, PhD⁷; Alexis Ogdie, MD⁸

¹Women's College Hospital, Department of Medicine, University of Toronto, Toronto, ON, Canada; ²University Hospital of Würzburg, Rheumatology/Clinical Immunology, Würzburg, Germany; ³Arthritis Clinic, Jackson, TN, United States; ⁴Rheumatology Department, University Hospital Basurto, Bilbao, Spain; ⁵Jagiellonian University Medical College, Kraków, Poland; ⁶The Hospital for Special Surgery, New York, New York, United States; ⁷Eli Lilly and Company, Indianapolis, IN, United States; ⁸Penn Medicine, Philadelphia, PA, United States

Corresponding author: Lihi Eder, MD, PhD

Women's College Research Institute

76 Grenville St, 6th Floor

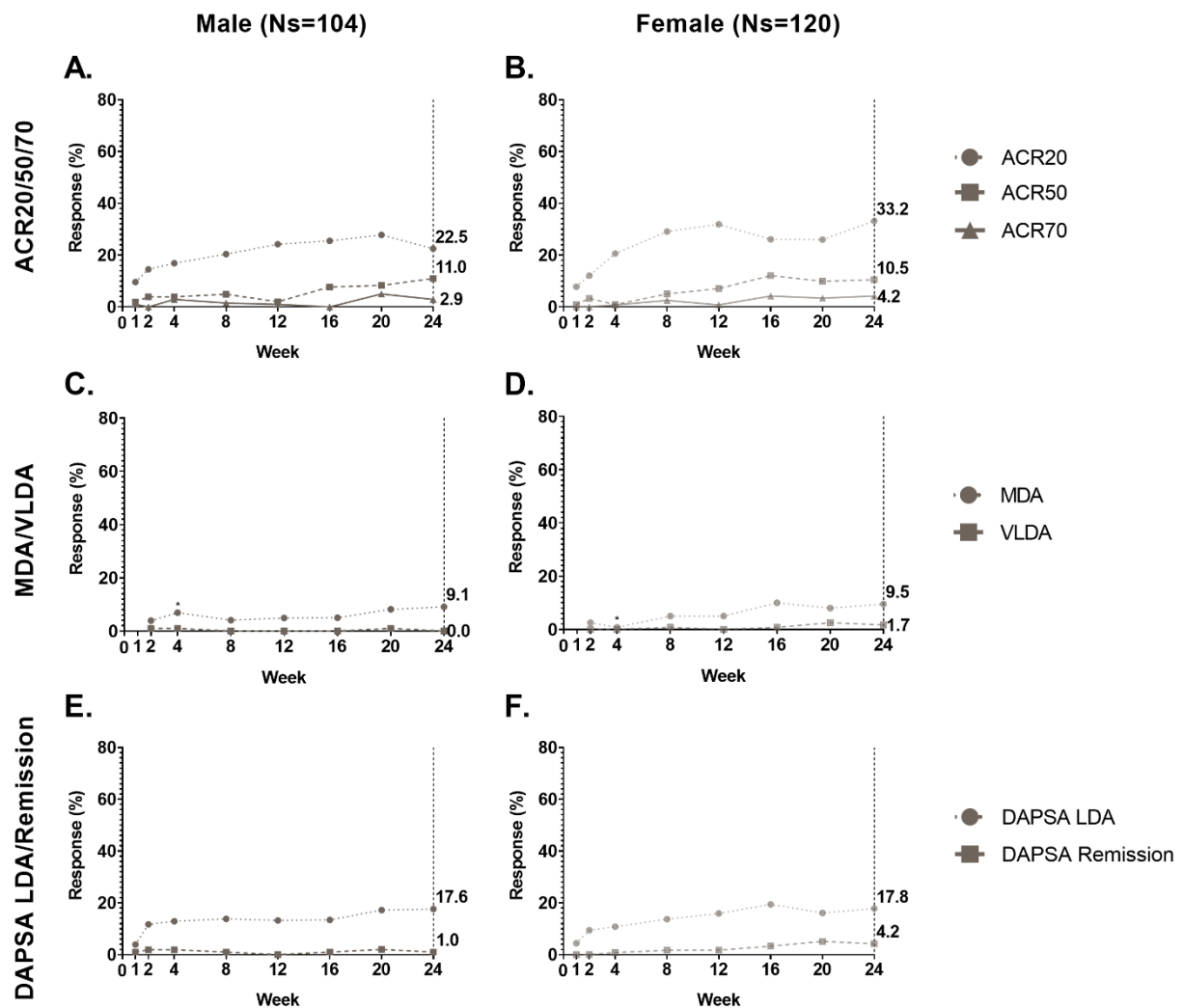
Toronto, Canada

Email: Lihi.eder@wchospital.ca

Telephone: 1-416-323-6400 ext. 5108

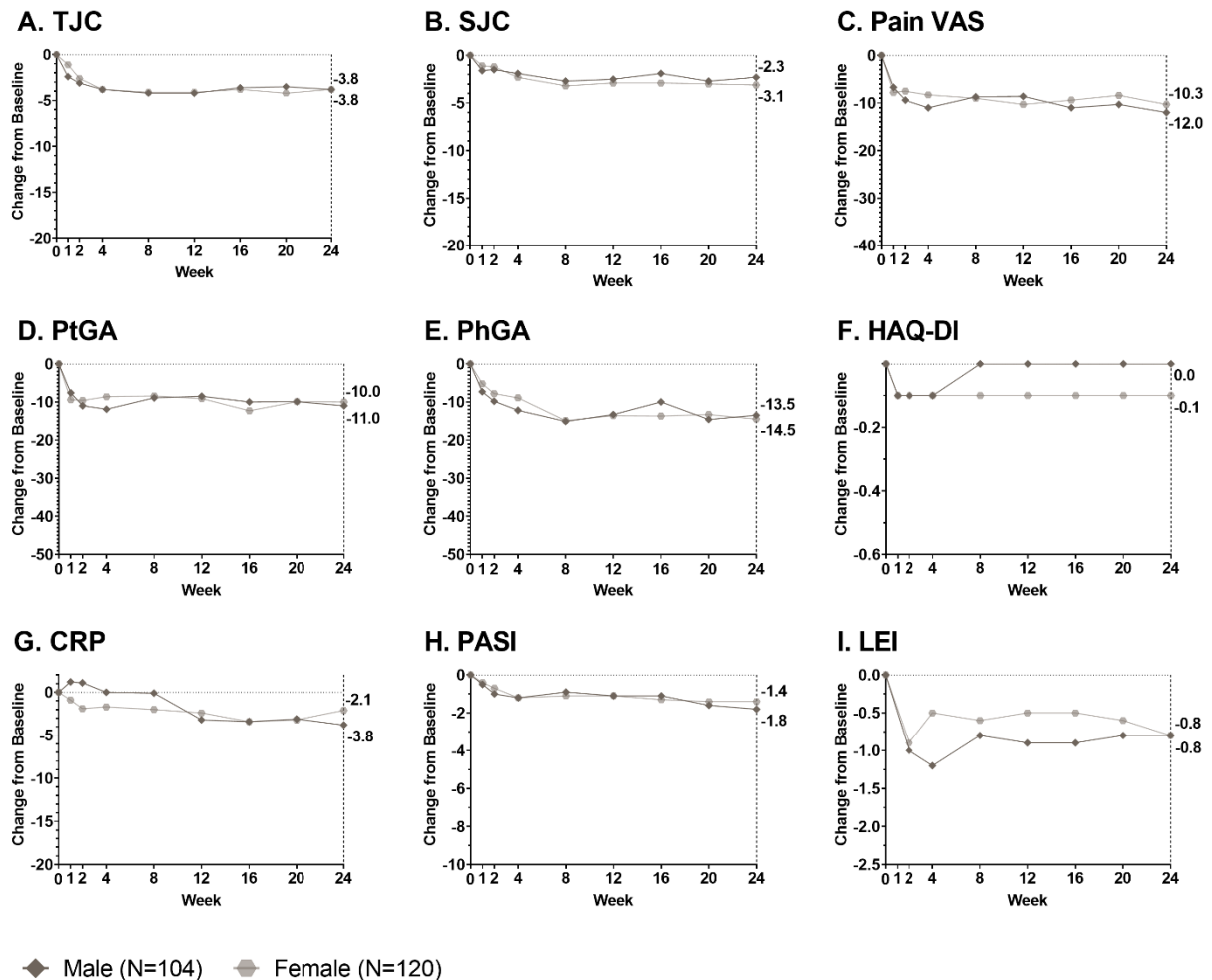
Fax: 1-416-323-6115

Supplemental Figure 1. Percentage of male and female patients receiving placebo achieving (a, b) ACR20/50/70, (c, d) MDA/VLDA, and (e, f) DAPSA LDA/DAPSA Remission through 24 weeks.



Missing data was imputed by mNRI. P values were calculated for proportions of male vs. female responders; *p<0.05. ACR20/50/70 = 20%, 50%, or 70% improvement from baseline in the American College of Rheumatology criteria; DAPSA = Disease Activity Index for Psoriatic Arthritis; LDA=Low Disease Activity; MDA = Minimal Disease Activity; mNRI = modified non-responder imputation; N = number of patients in the analysis population; VLDA = Very Low Disease Activity.

Supplemental Figure 2. Changes from baseline in male and female patients treated with placebo for a) TJC, b) SJC, c) Pain VAS, d) PtGA, e) PhGA, f) HAQ-DI, g) CRP, h) PASI, and i) LEI through 156 weeks.



Missing data were imputed by mBOCF. TJC includes 68 joints; SJC includes 66 joints. Pain VAS, PtGA, and PhGA are measured on a 0–100 scale. HAQ-DI is measured on a 0–3 scale. CRP is measured in mg/L. PASI is measured on a 0–72 scale. LEI is measured on a 0–6 scale.

CRP = C-reactive protein; HAQ-DI = Health Assessment Questionnaire Disability Index; LEI = Leeds Enthesitis Index; mBOCF = modified baseline observation carried forward; Ns = number of patients in subgroup; Pain VAS = pain visual analog scale;

PASI = Psoriasis Area and Severity Index; PhGA = Physician's Global Assessment of Disease Activity; PsA = psoriatic arthritis; PtGA = Patient's Global Assessment of Disease Activity; SJC = swollen joint count; TJC = tender joint count.