

Figure S1

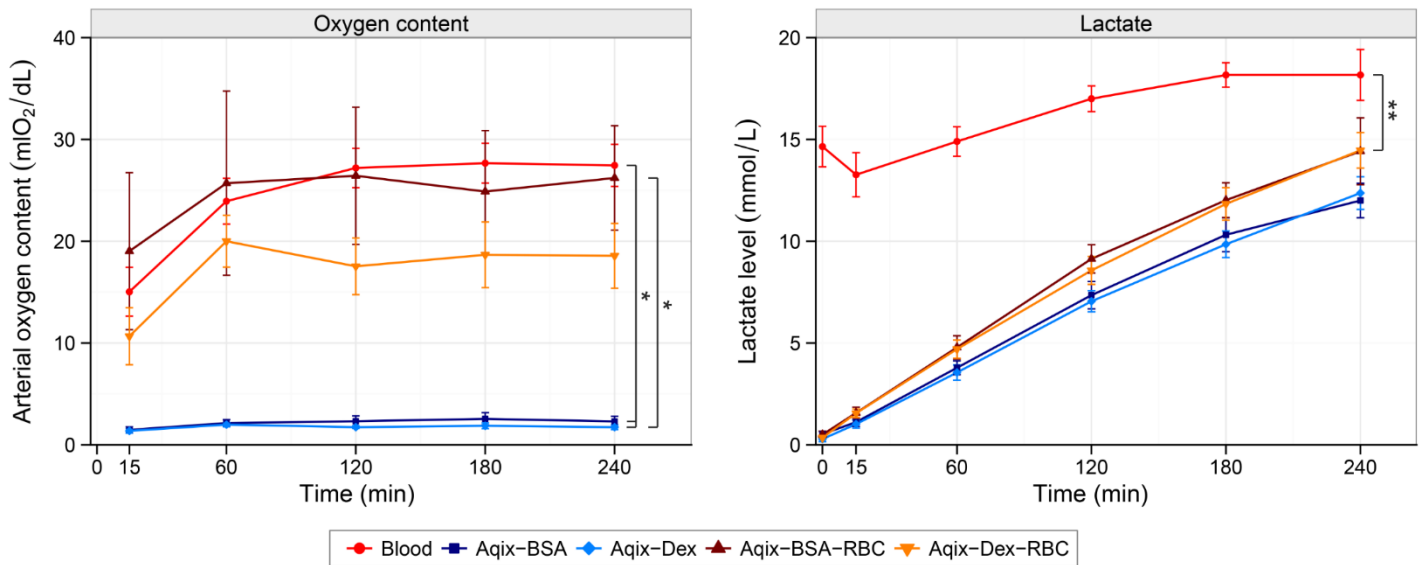


Figure S1. Oxygen and lactate measurements. Porcine kidneys were perfused for 4 hours with blood (control), with Aqix supplemented with a colloid (2.2% BSA or 3.5% Dextran 40), or Aqix with a colloid (BSA or Dextran 40) and RBC. **(A)** arterial oxygen content, * $p=0.045$ control versus Aqix-BSA and Aqix-Dex ($p>0.01$) and Aqix-BSA-RBC versus Aqix-Dex ($p>0.01$) **(B)** arterial lactate during 4 hours NMP, ** $p=0.002$ Control versus Aqix-Dex-RBC. Every group contains 6 kidneys. BSA, bovine serum albumin; Dex, dextran 40; RBC, red blood cells; NMP, normothermic machine perfusion. Data are presented as mean \pm SEM.

Figure S2

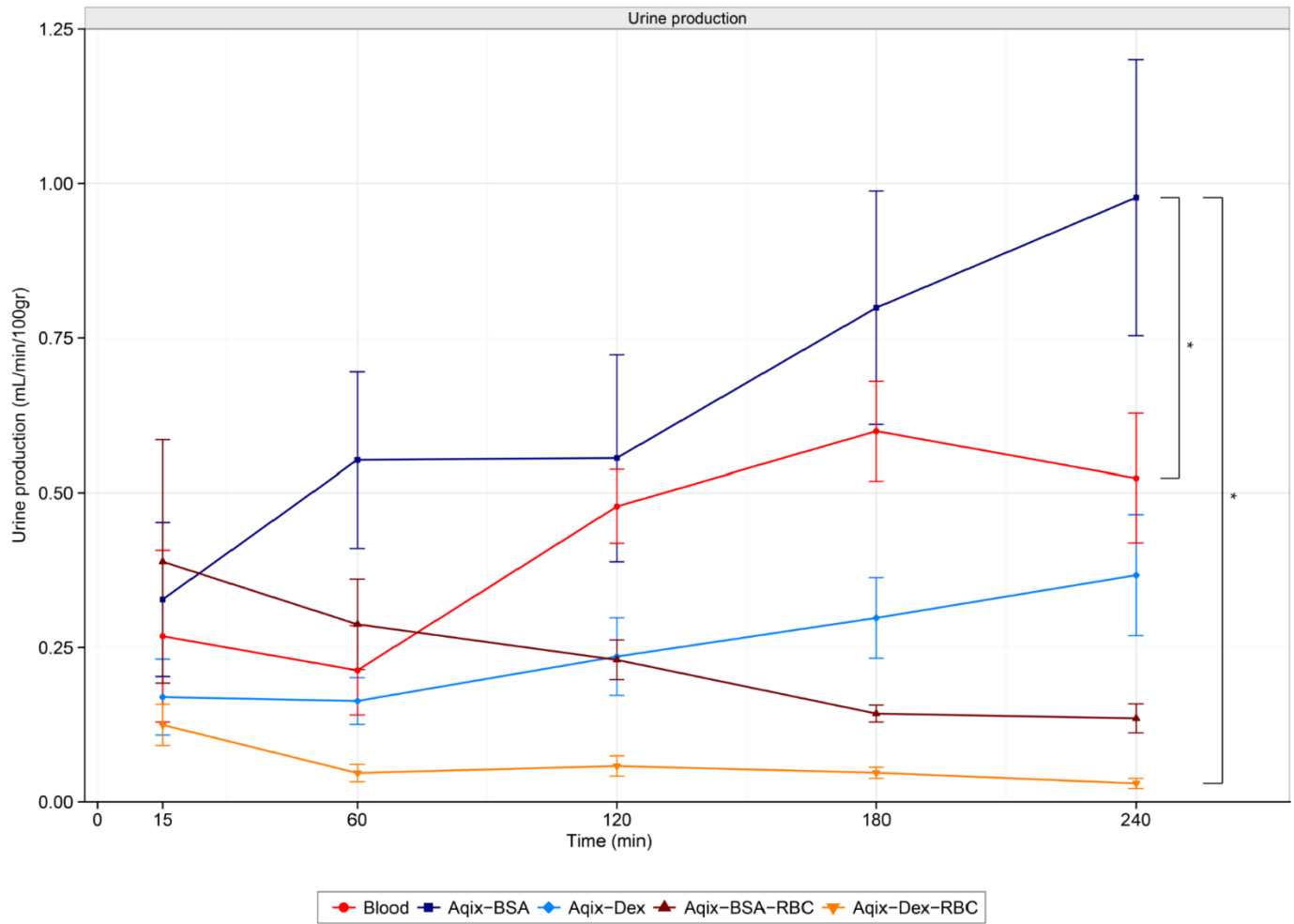


Figure S2. Urine production over time. Porcine kidneys were perfused for 4 hours with blood (control), with Aqix supplemented with a colloid (2.2% BSA or 3.5% Dextran 40), or Aqix with a colloid (BSA or Dextran 40) and RBC. (A) urine flow. Every group contains 6 kidneys. BSA, bovine serum albumin; Dex, dextran 40; RBC, red blood cells; NMP, normothermic machine perfusion. Data are presented as mean \pm SEM.

Figure S3

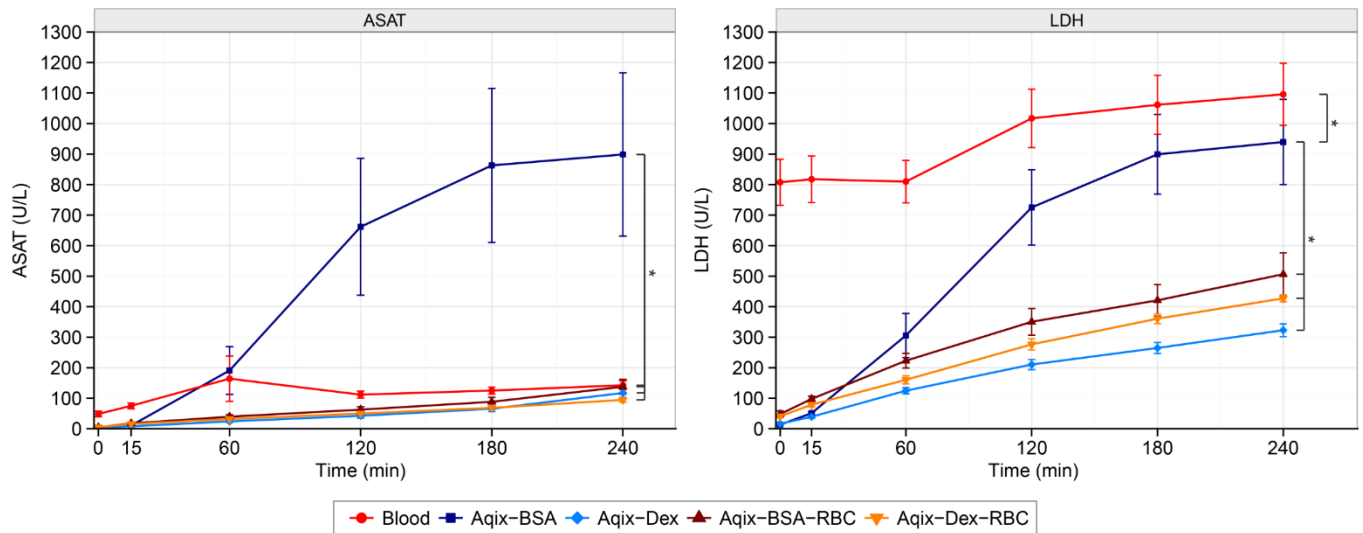
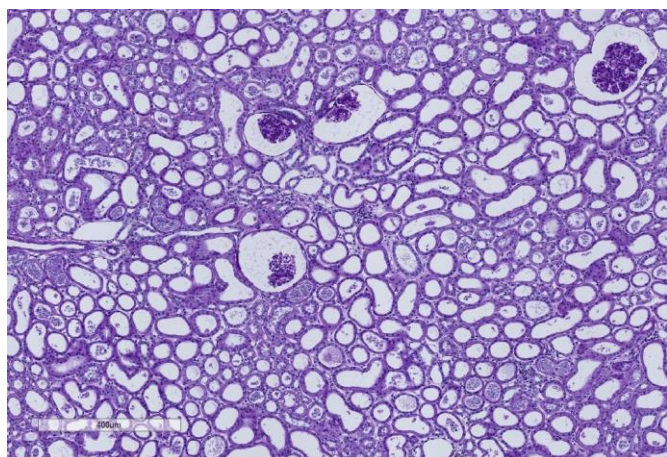
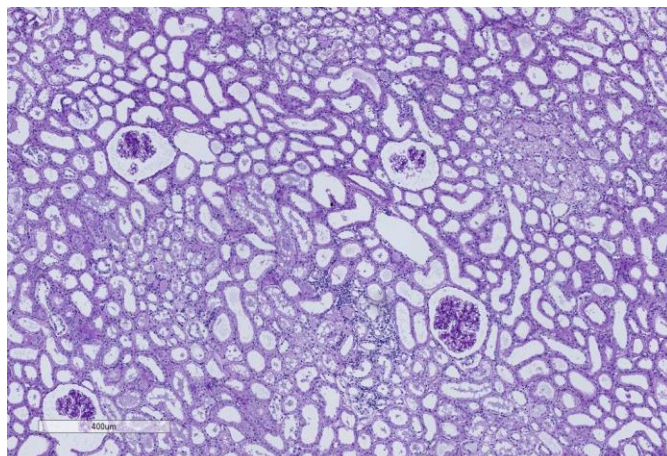


Figure S3. Injury markers ASAT and LDH over time. Porcine kidneys were perfused for 4 hours with blood (control), with Aqix supplemented with a colloid (2.2% BSA or 3.5% Dextran 40), or Aqix with a colloid (BSA or Dextran 40) and RBC. **(A)** ASAT, $*p < 0.001$, **(B)** LDH, $*p < 0.001$ between Aqix-BSA and all other groups. Every group contains 6 kidneys. BSA, bovine serum albumin; Dex, dextran 40; RBC, red blood cell; ASAT, aspartate aminotransferase; LDH, lactate dehydrogenase; NMP, normothermic machine perfusion. Data are presented as mean \pm SEM.

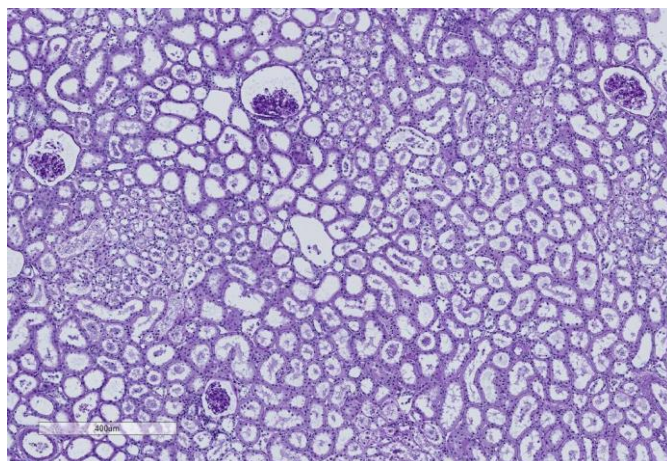
Figure S4



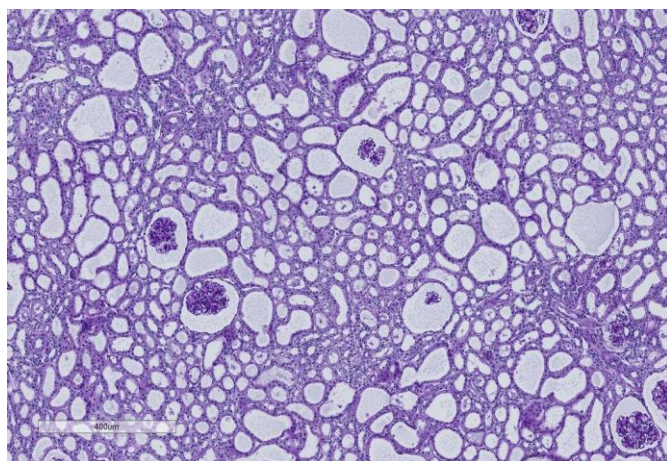
Blood: Median percentage of damage in this group: 10%



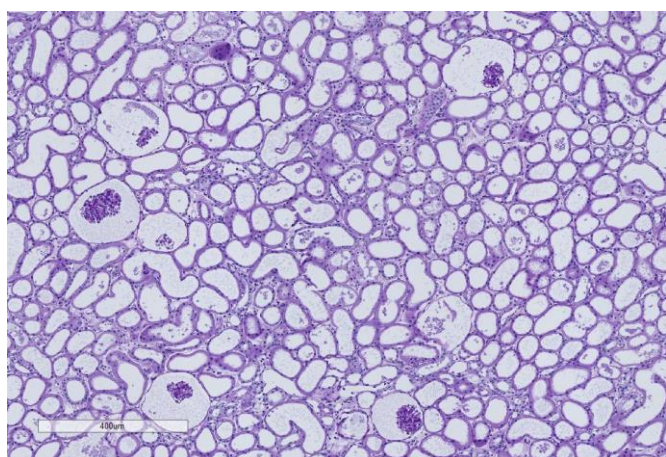
Aqix+BSA: Median percentage of damage in this group: 38%



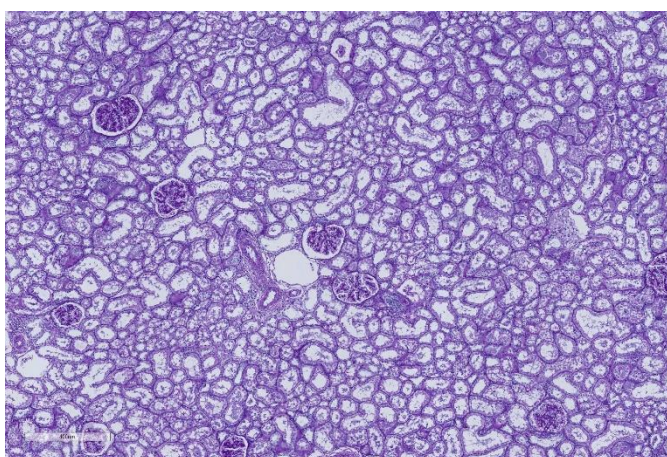
Aqix+Dex: Median percentage of damage in this group: 50%



Aqix+BSA+RBC: Median percentage of damage in this group: 7%



Aqix+Dex+RBC: Median percentage of damage in this group: 18%



Negative control: Median percentage of damage in this group: 1%