

Full Length Western Blots

Tucker et al 2022

Figure 3A: Total Tau in female cortex

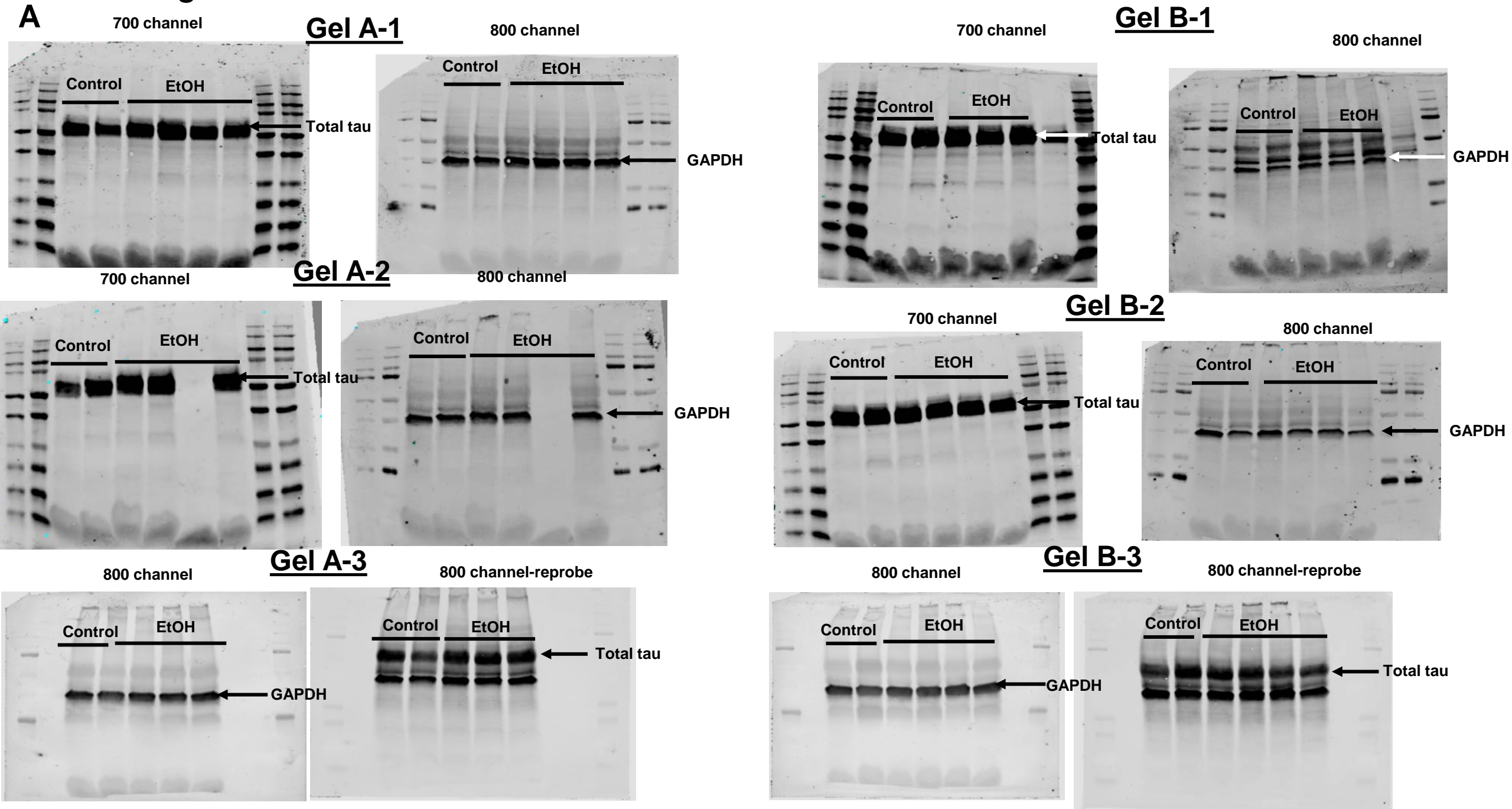


Figure 3B: p-tau214 in female cortex

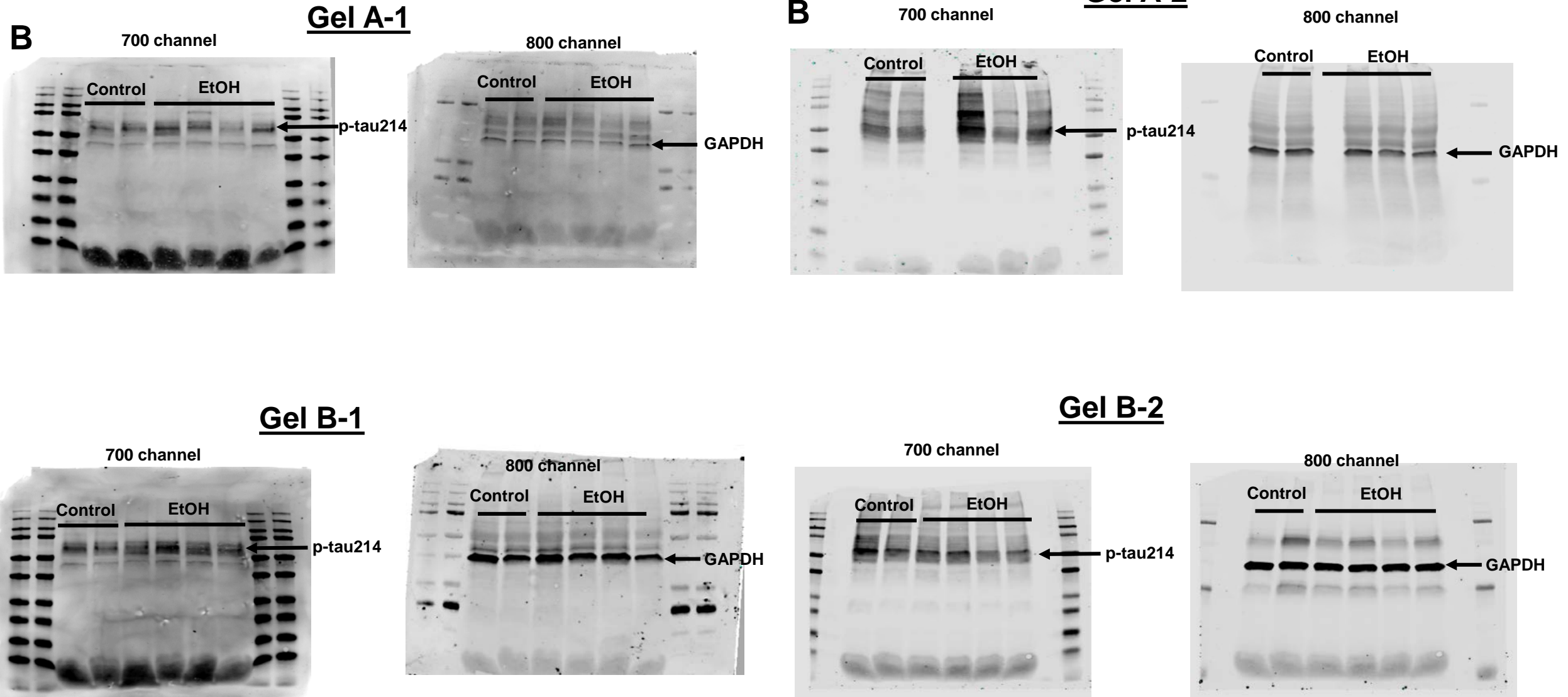


Figure 3C: Total Tau in female Hippocampus

C

Gel A-1

800 channel

Control

EtOH

800 channel-reprobe

Control

EtOH

GAPDH

Total tau

Gel A-2

800 channel

Control

EtOH

GAPDH

Total Tau

Gel B-1

800 channel

Control

EtOH

GAPDH

800 channel-reprobe

Control

EtOH

Total tau

Gel B-2

700 channel

Control

EtOH

Total tau

800 channel

Control

EtOH

GAPDH

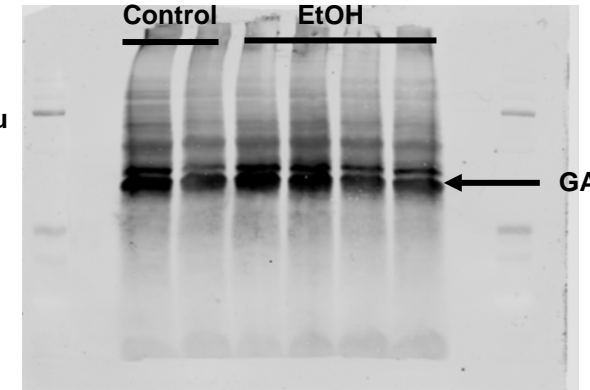
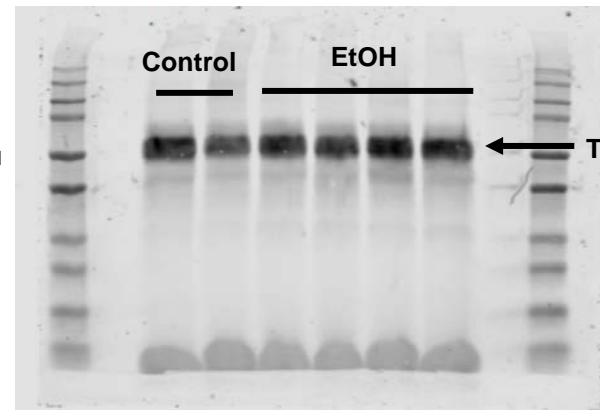
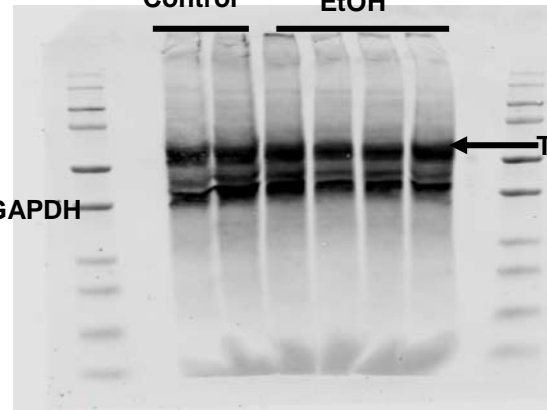
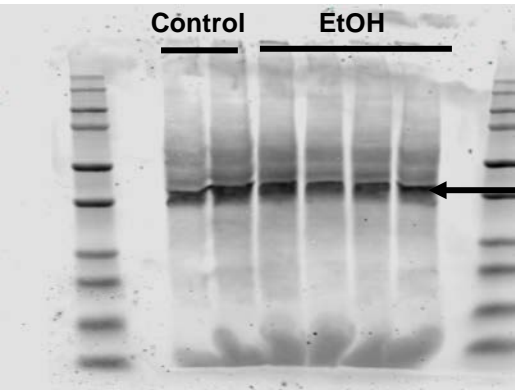
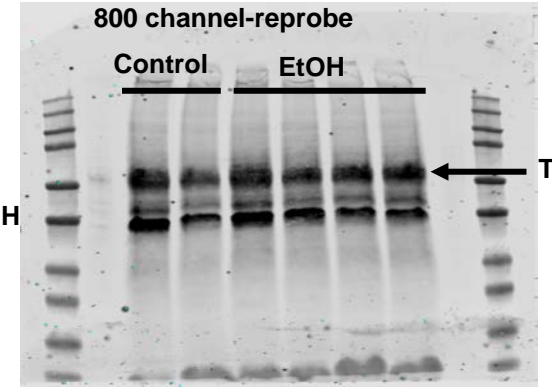
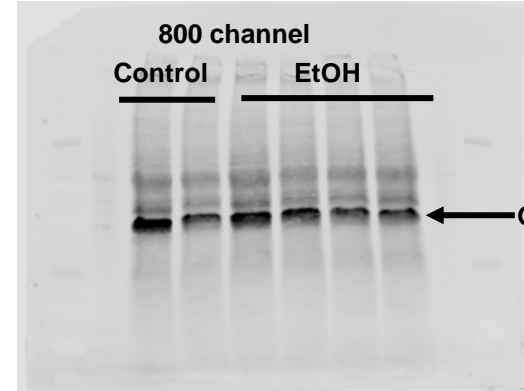
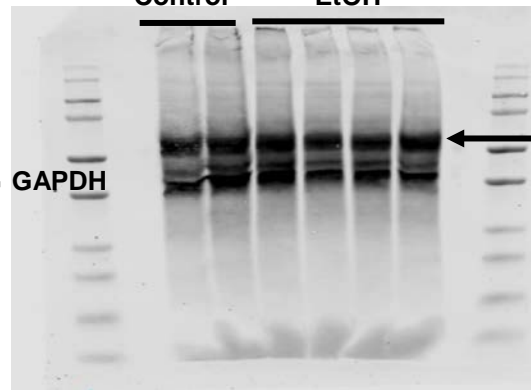
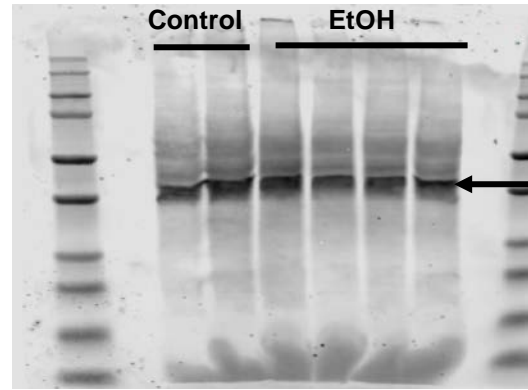


Figure 3D-E: pTau214 in female hippocampus and amyloid in female cortex

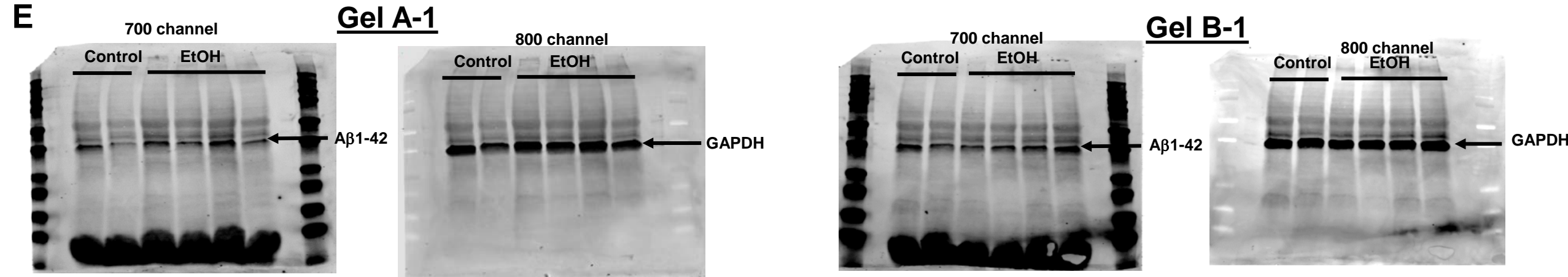
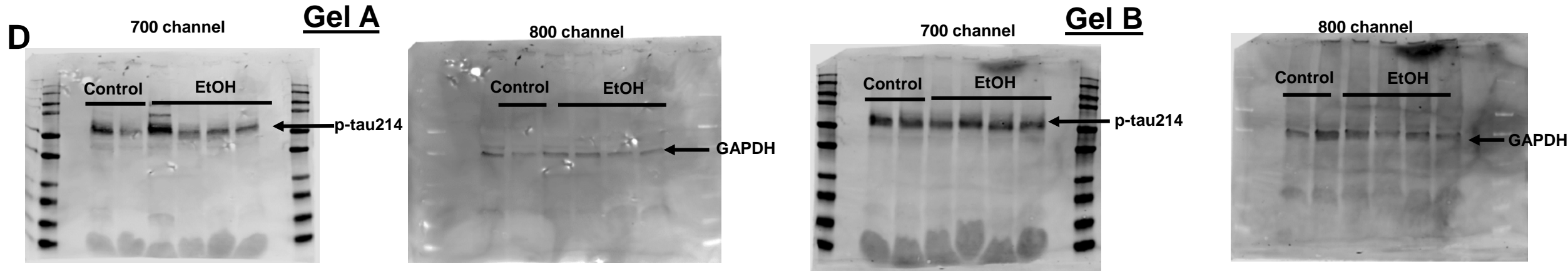


Figure 3F: A β 1-42 in female Hippocampus

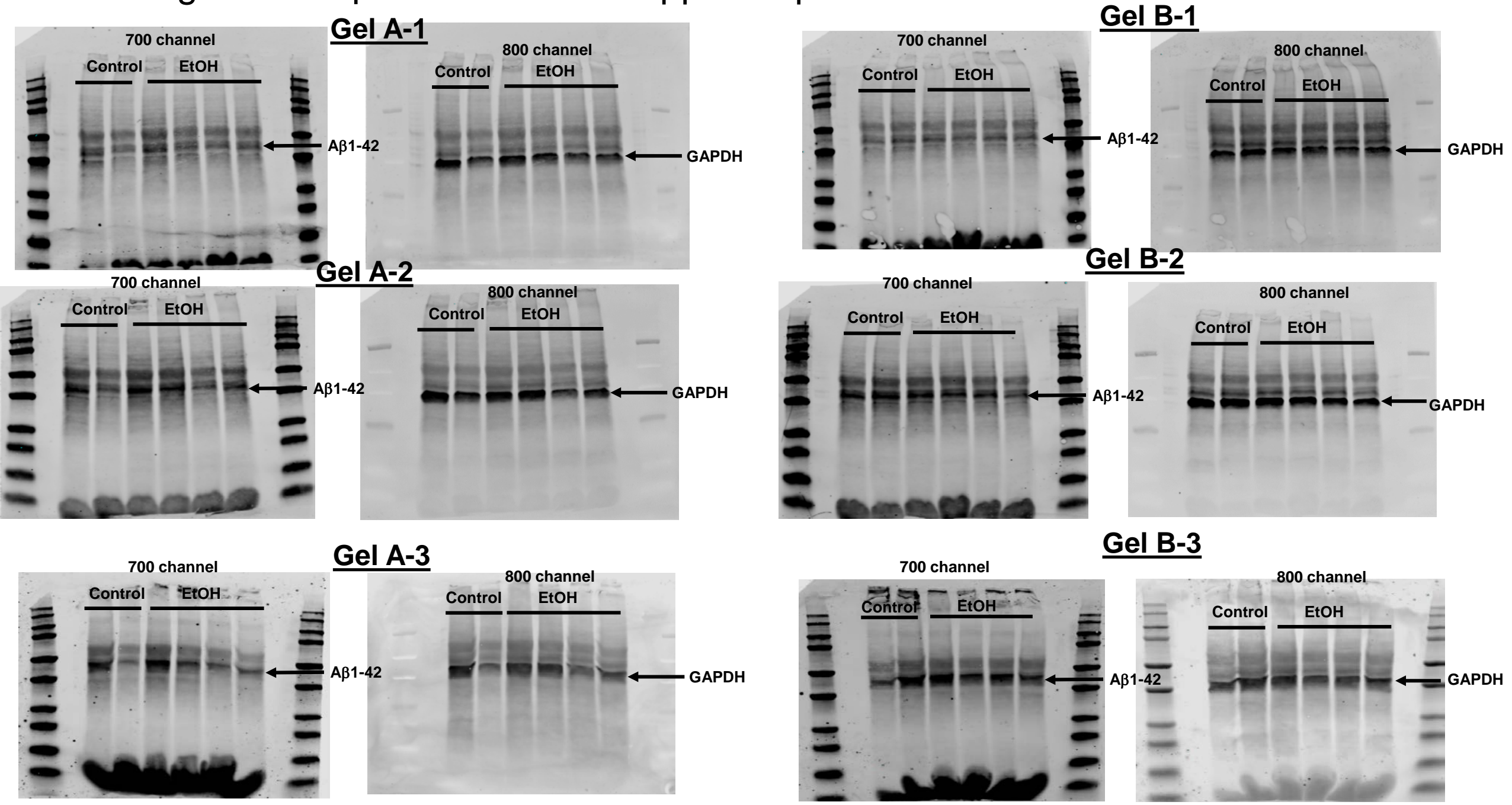


Figure 4A,B,E: Tau and amyloid in male cortex

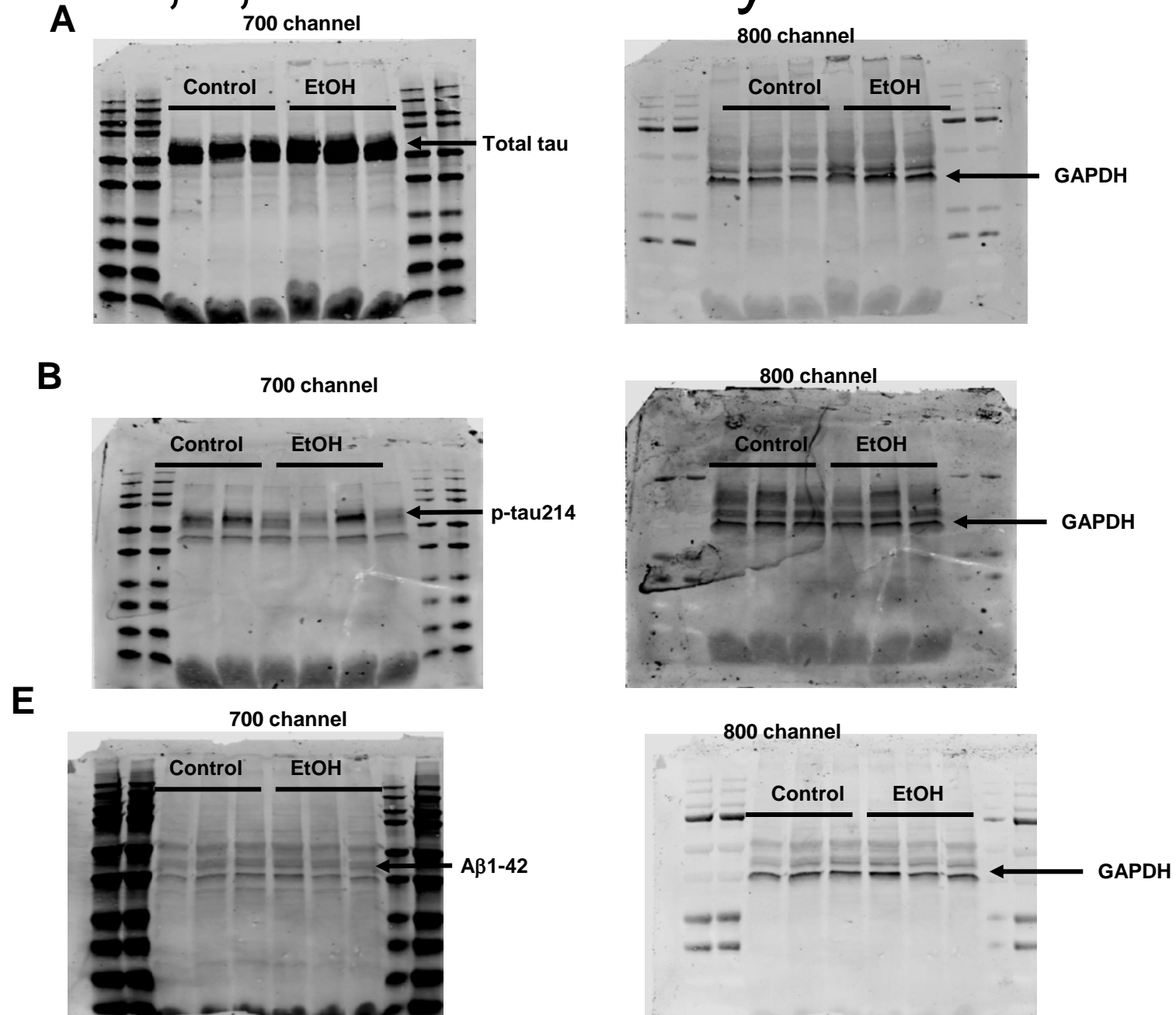
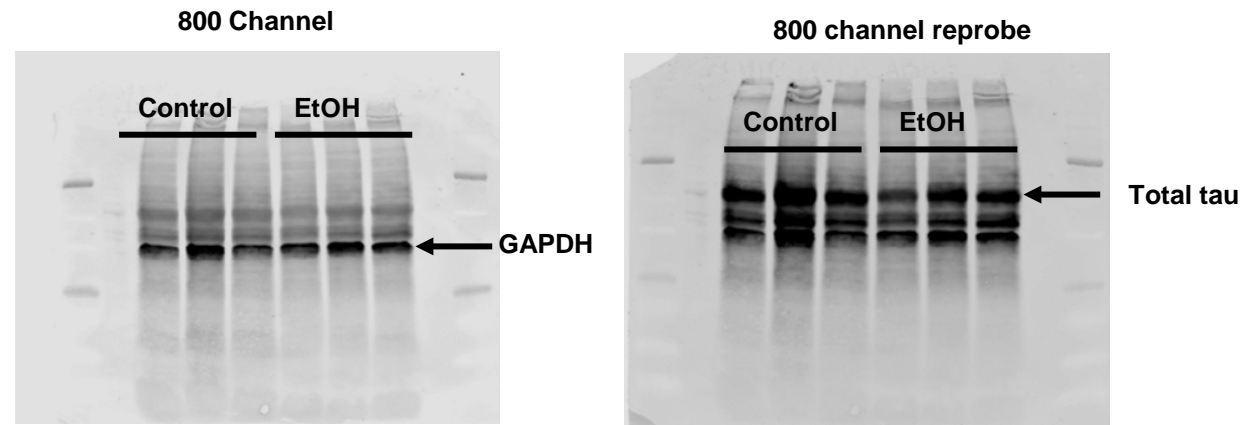
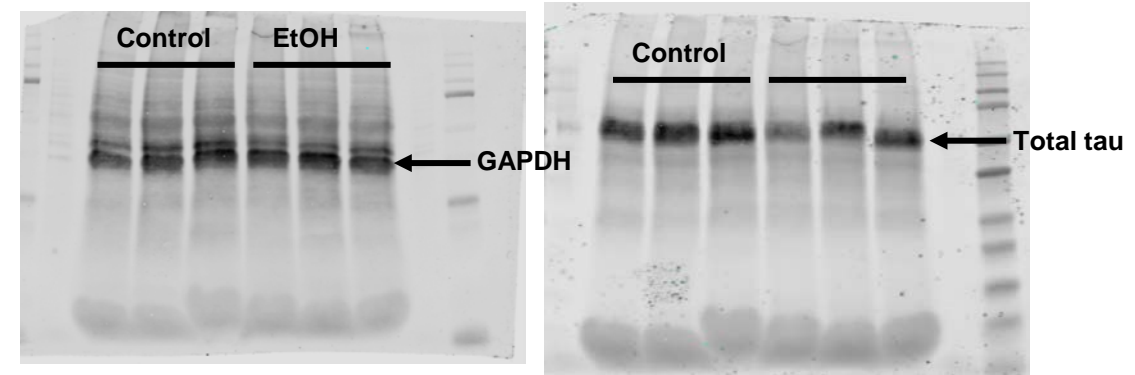


Figure 4C-D: Total Tau and pTau 214 in male hippocampus

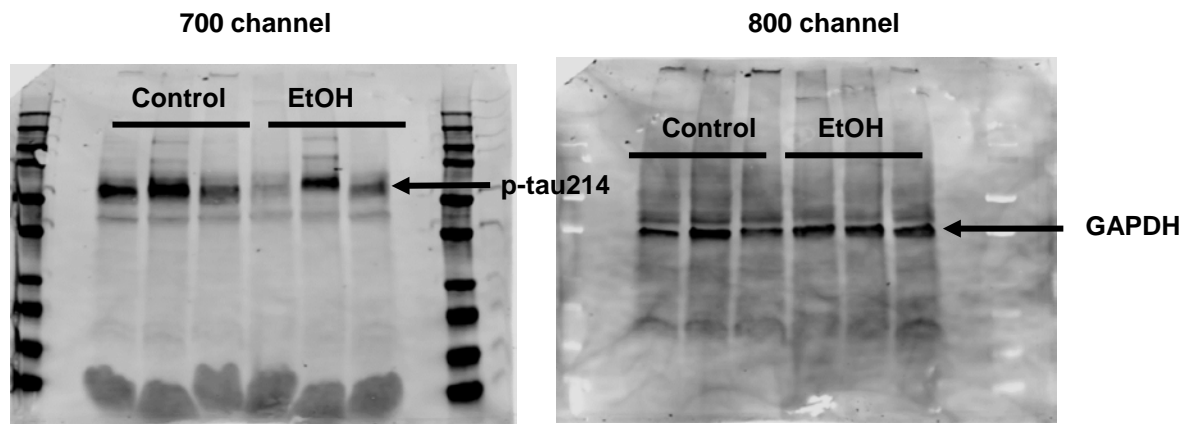
C-1



C-2



D-1



D-2

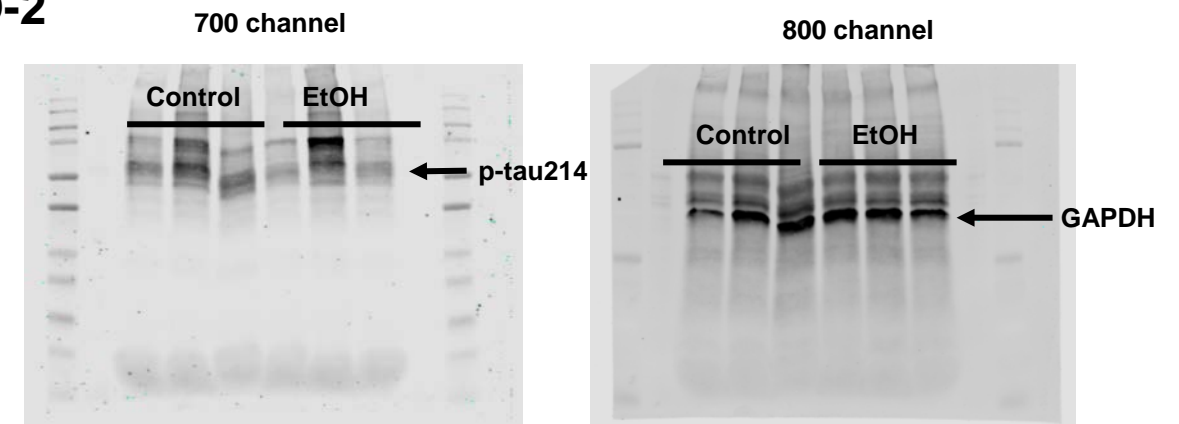


Figure 4F: A β 1-42 in male hippocampus

F

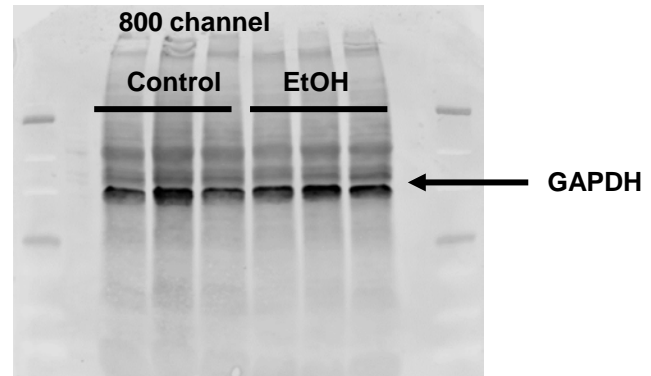
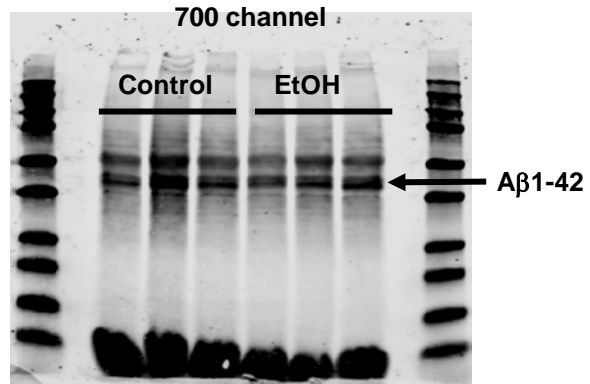


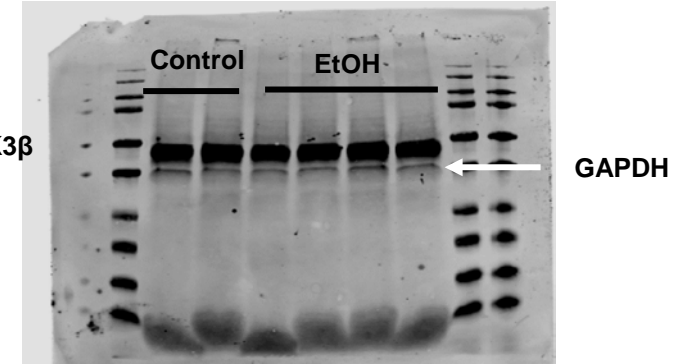
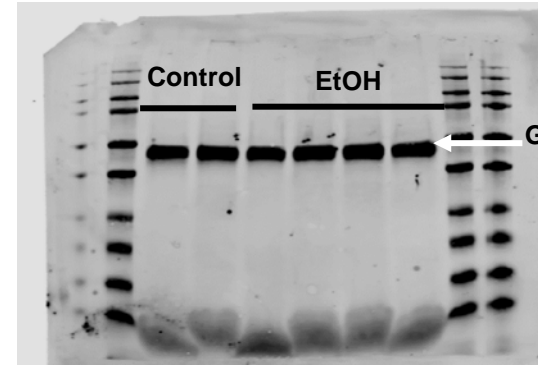
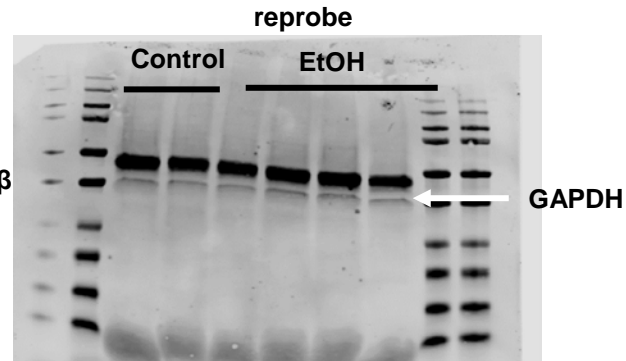
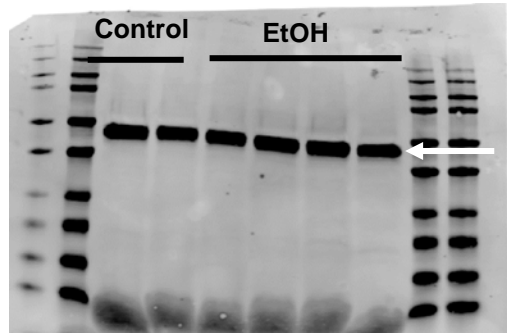
Figure 6A: Total GSK3 β in female cortex

A

Gel A-cortex

Gel B-cortex

reprobe



A

Gel A-hippocampus

Gel B-hippocampus

700 channel

800 channel

700 channel

800 channel

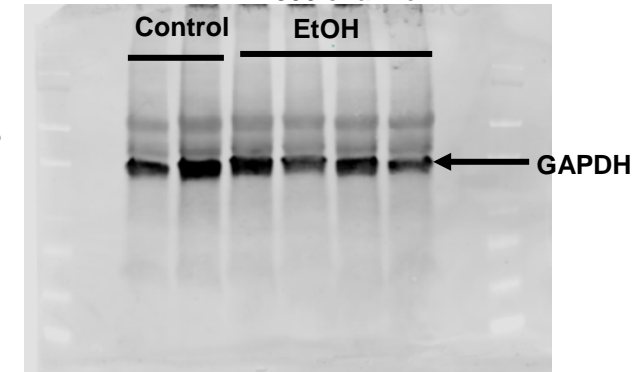
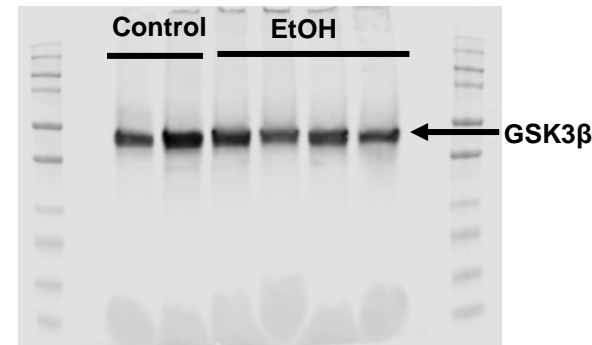
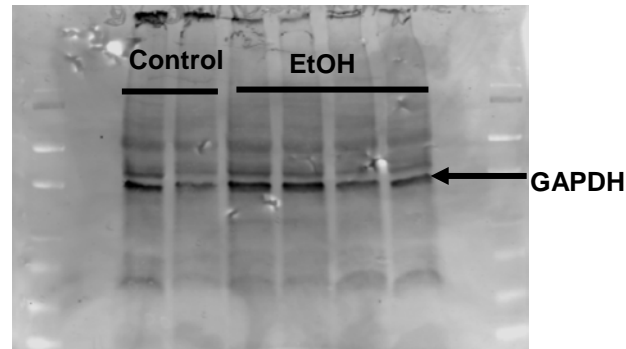
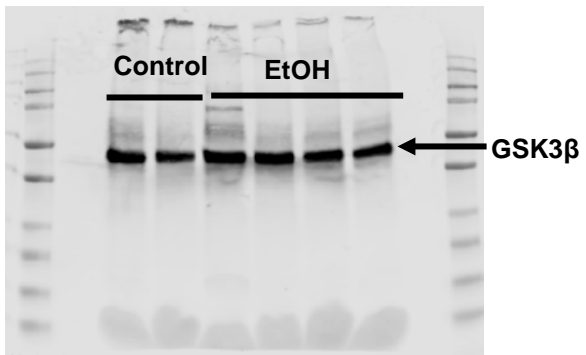


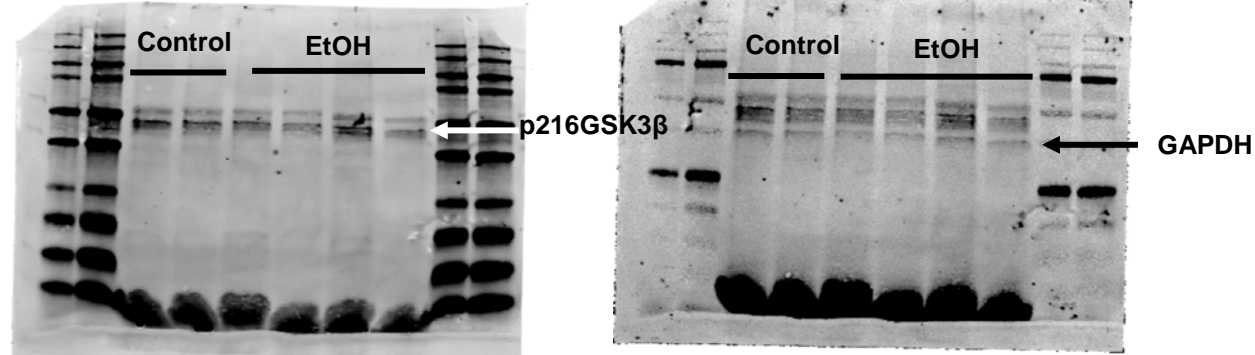
Figure 6B: GSK3 β isoforms in female cortex

B

Gel A

800 channel

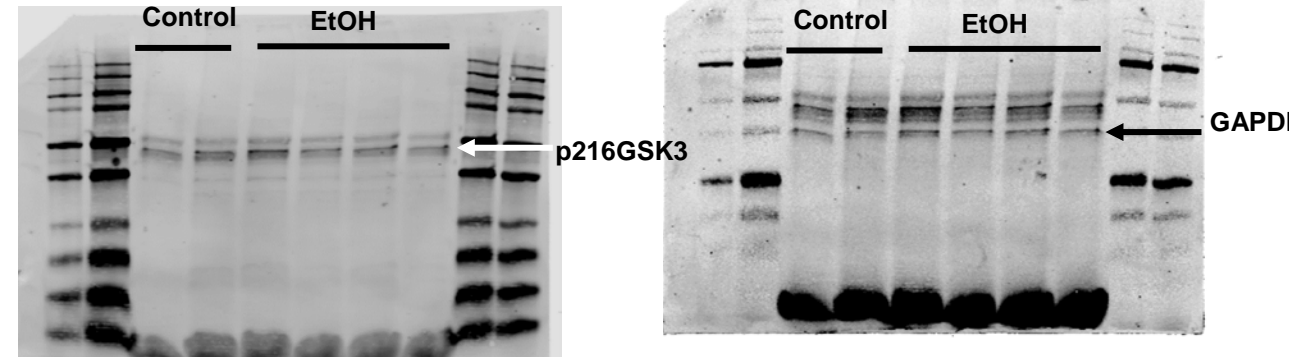
800 reprobe



Gel B

800 channel

800 reprobe

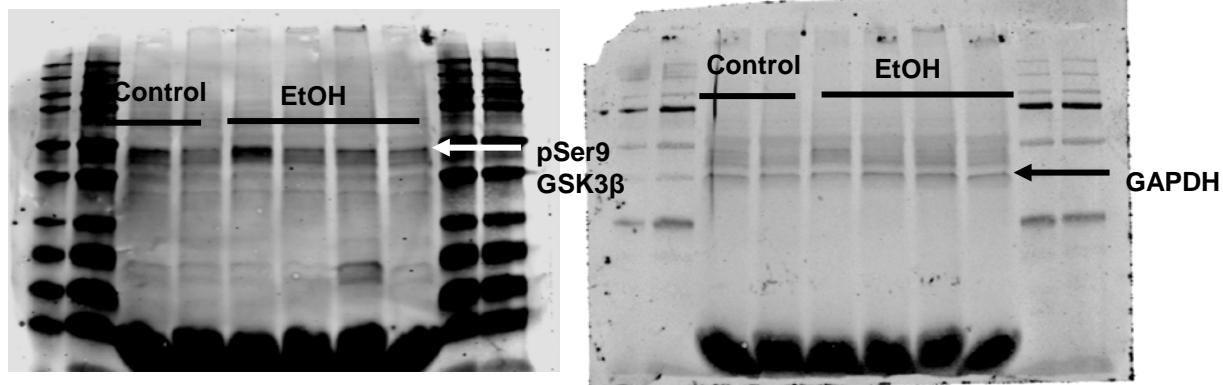


B

Gel A

700 channel

800 channel



B

Gel B

700 channel

800 channel

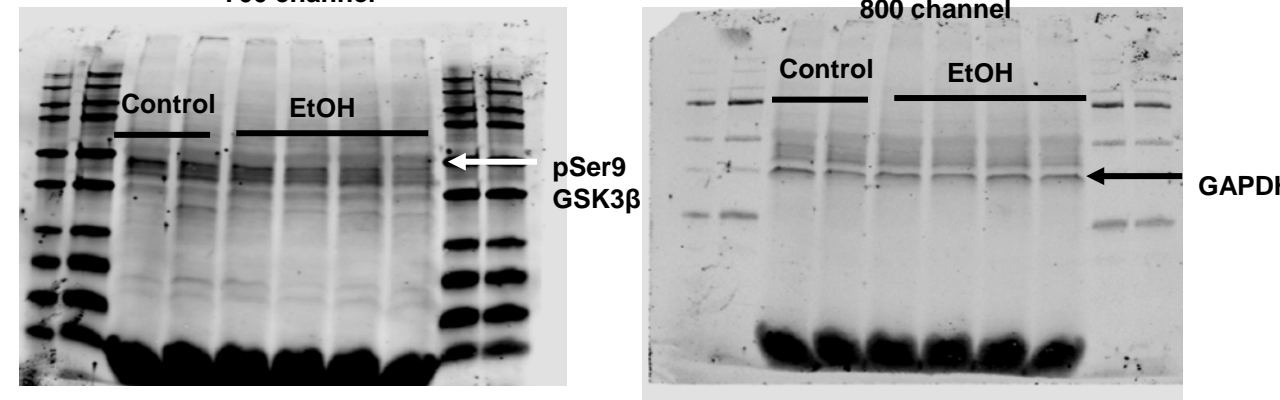
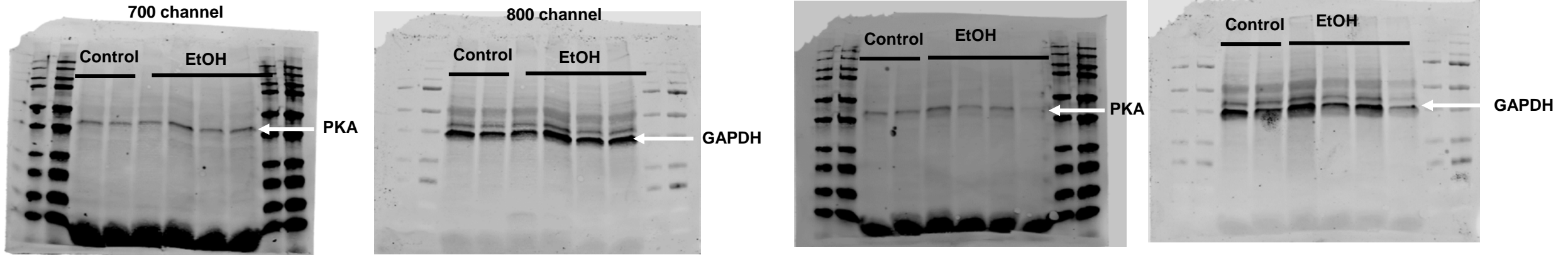


Figure 6C-D: PKA and PP2A in female cortex

C

Gel A

Gel B



D

Gel A

Gel B

