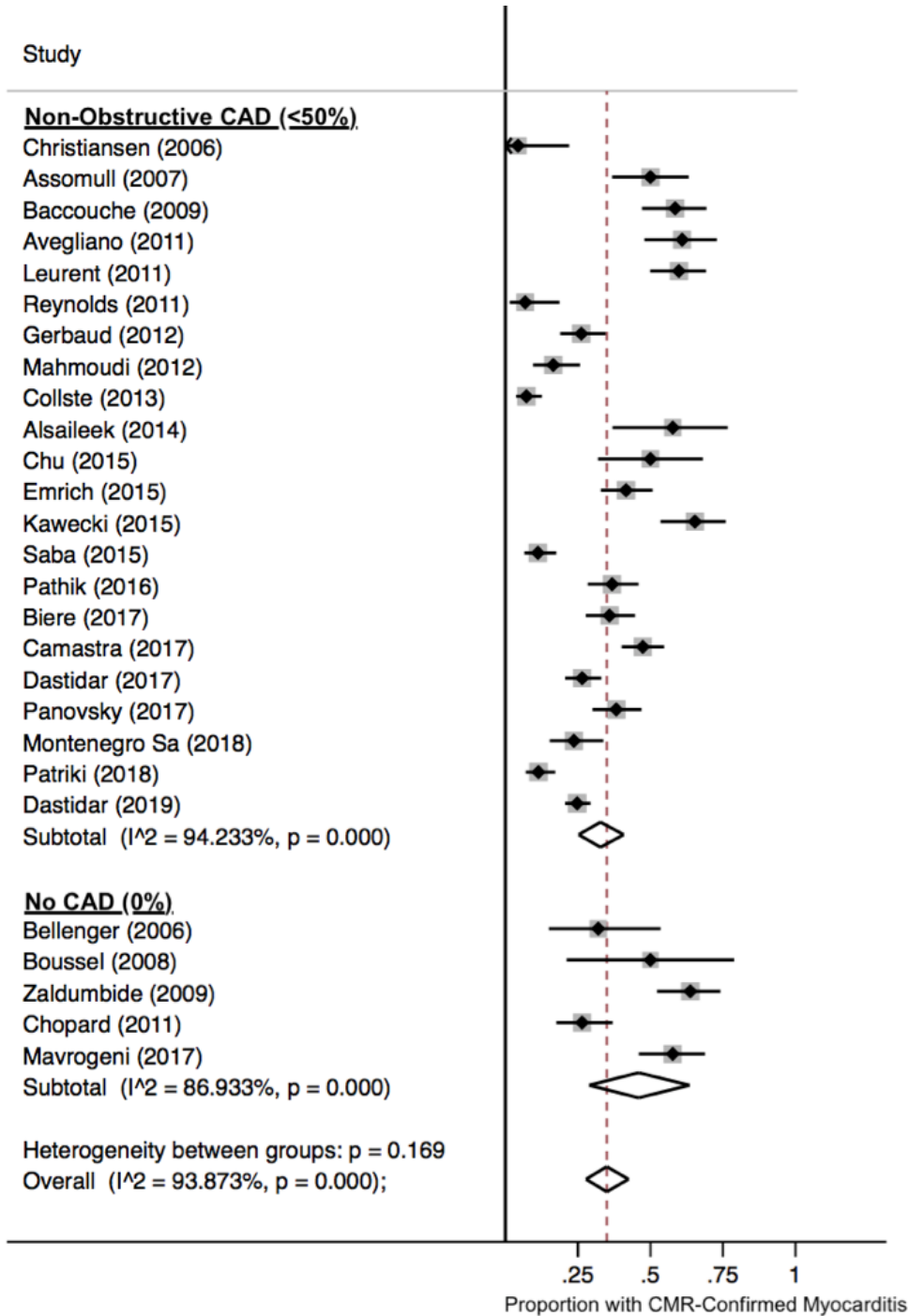
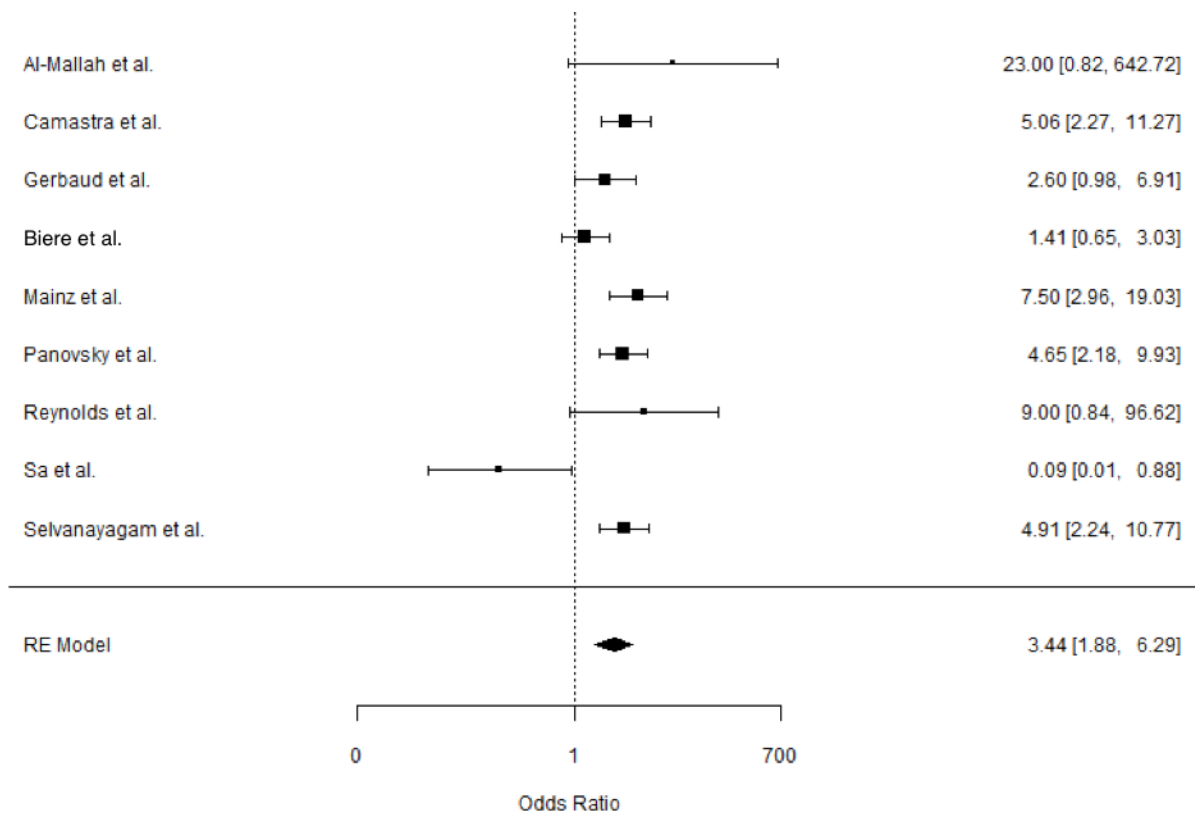


SUPPLEMENTAL MATERIALS

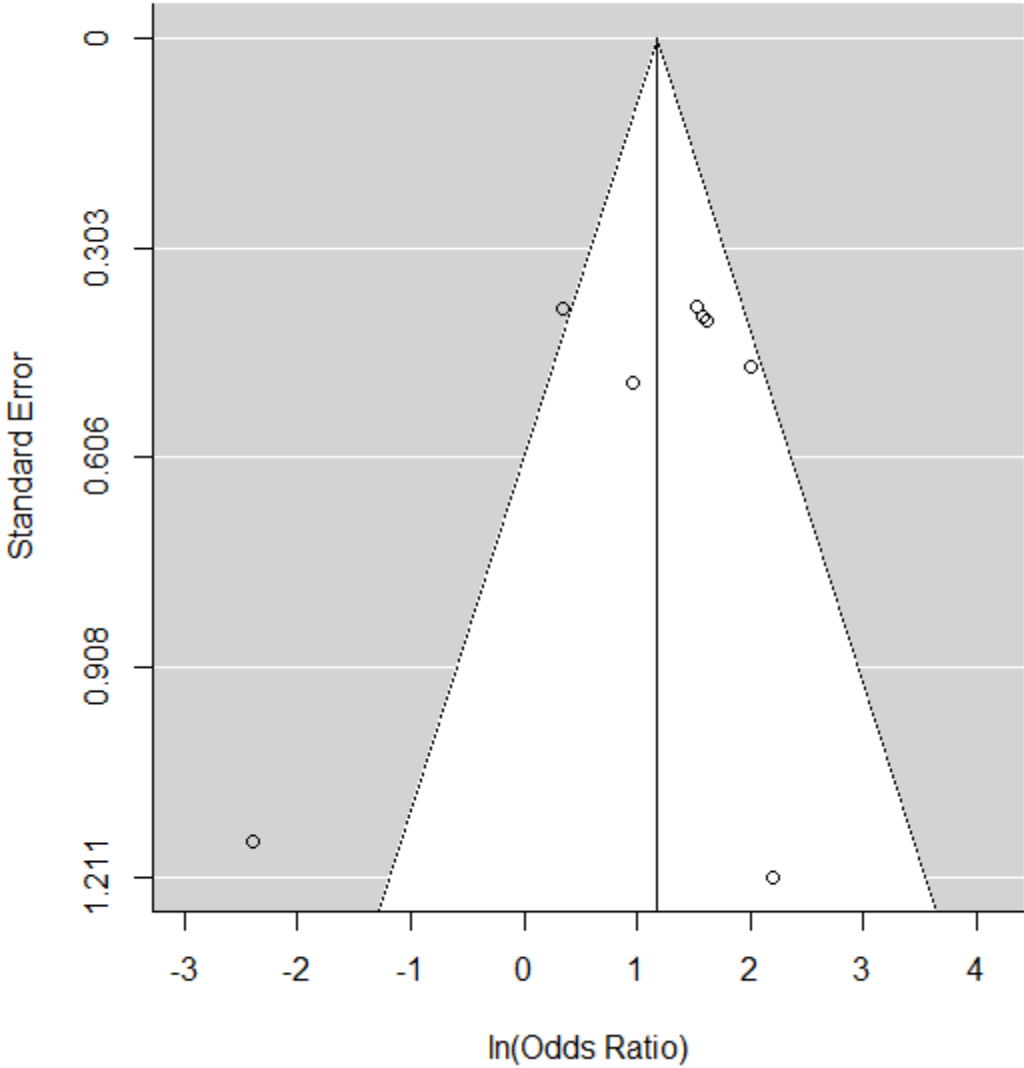
Supplemental Figure 1. Proportion of myocarditis among patients with MINOCA undergoing CMR based on the threshold angiographic diameter stenosis employed, after excluding participants who did not undergo CMR.



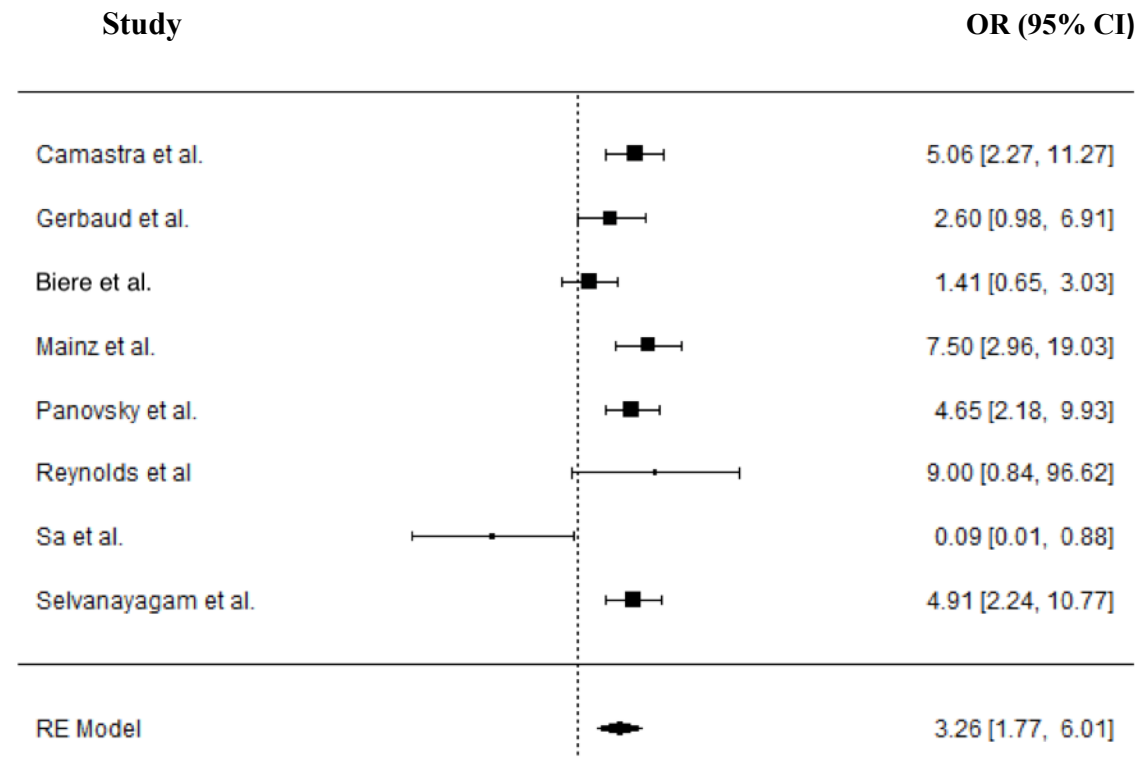
Supplemental Figure 2. Relationship between angiographically normal coronary arteries and a final diagnosis of myocarditis in a meta-analysis of individual patient data.



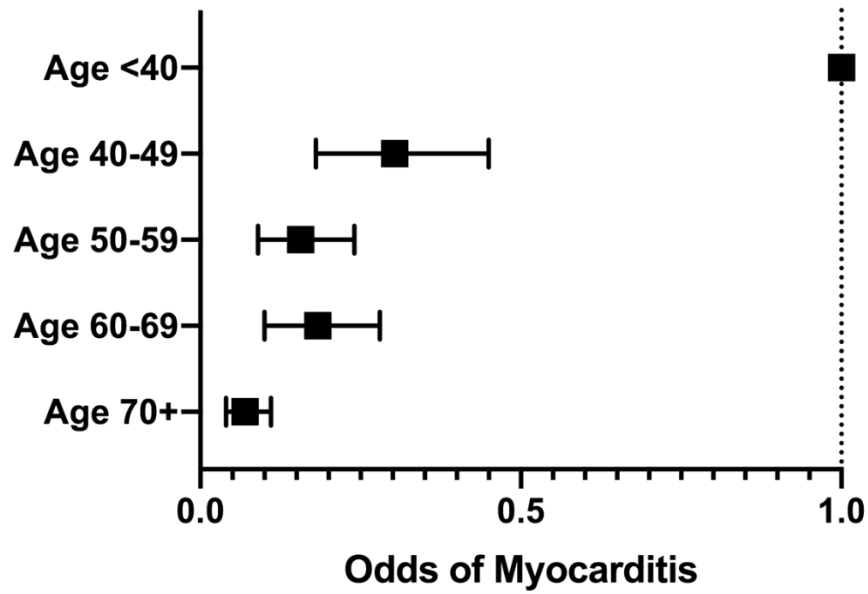
Supplemental Figure 3. Funnel plot to evaluate for publication bias. Each dot represents one study.



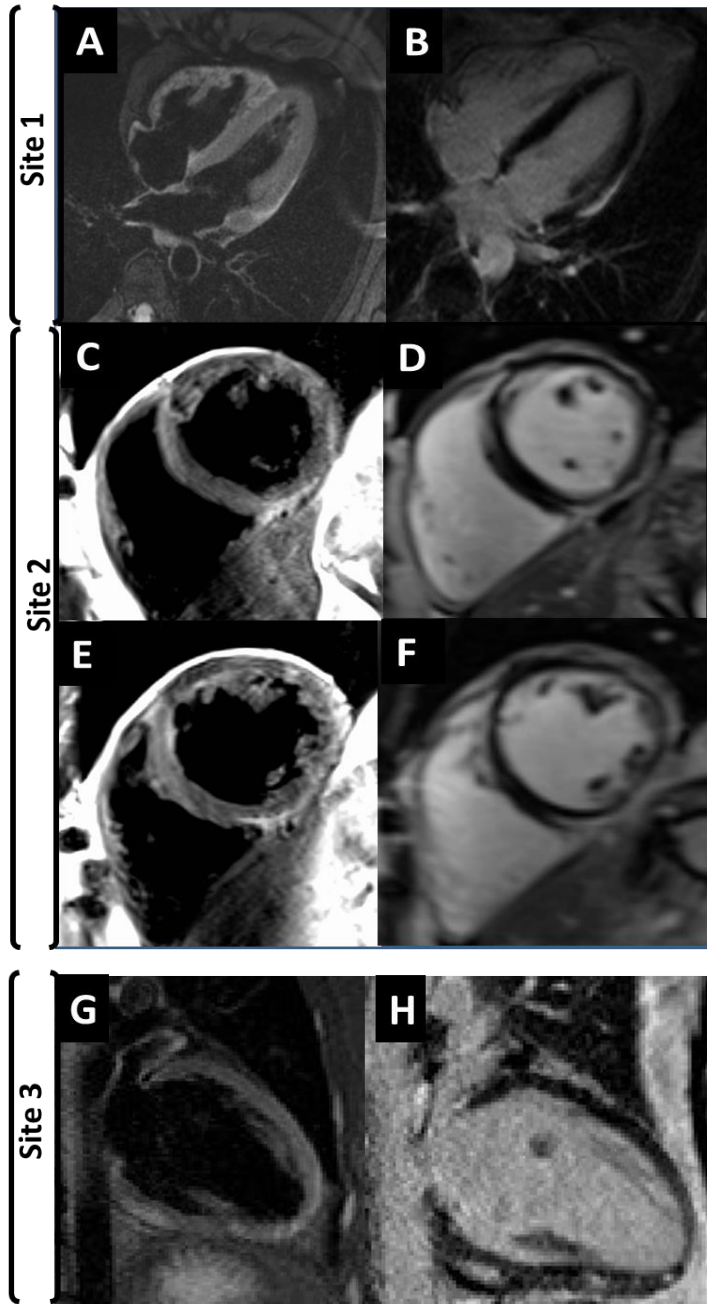
Supplemental Figure 4. Relationship between angiographically normal coronary arteries and a final diagnosis of myocarditis in a sensitivity analysis including 8 studies.



Supplemental Figure 5. Odds of myocarditis by age group, relative to patients age <40 years, among patients with a provisional diagnoses of MINOCA.



Supplemental Figure 6. Representative CMR images from various sites



**A: T2 weighted image showing increased signal intensity in the basal lateral wall; B: Late gadolinium sequence with sub-epicardial enhancement in the same location within the basal lateral wall; C & E: T2 weighted images demonstrating increased signal intensity in multiple coronary territories; D and F: Late gadolinium enhanced images showing sub-epicardial enhancement in multiple coronary territories; G: T2 weighted image demonstrating focal edema in the subepicardium of the inferior wall; H: Late gadolinium sequence with epicardial enhancement in the inferior and lateral wall.

Supplementary Table 1.

| Study | Number of MINOCA Patients Enrolled |
|---------------------|---|
| Bellenger (2006) * | 25 |
| Christiansen (2006) | 23 |
| Assomull (2007) | 60 |
| Boussel (2008) * | 12 |
| Baccouche (2009) | 82 |
| Zaldumbide (2009) * | 80 |
| Avegliano (2011) | 64 |
| Chopard (2011) * | 87 |
| Leurent (2011) | 107 |
| Reynolds (2011) | 50 |
| Gerbaud (2012) | 130 |
| Mahmoudi (2012) | 91 |
| Collste (2013) | 176 |
| Alsaileek (2014) | 26 |
| Chu (2015) | 32 |
| Emrich (2015) | 125 |
| Kawecki (2015) | 75 |
| Saba (2015) | 143 |
| Pathik (2016) | 125 |
| Biere (2017) | 131 |
| Camastra (2017) | 190 |
| Dastidar (2017) | 204 |
| Mavrogeni (2017) * | 78 |
| Panovsky (2017) | 136 |
| Montenegro (2018) | 114 |
| Patriki (2018) | 167 |
| Dastidar (2019) | 388 |

* MINOCA was defined by angiographically normal coronary arteries