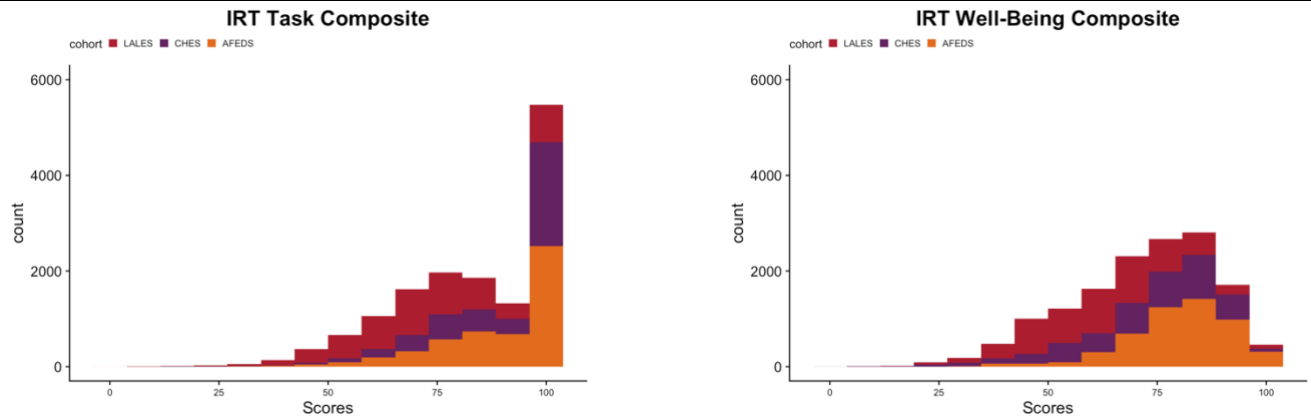


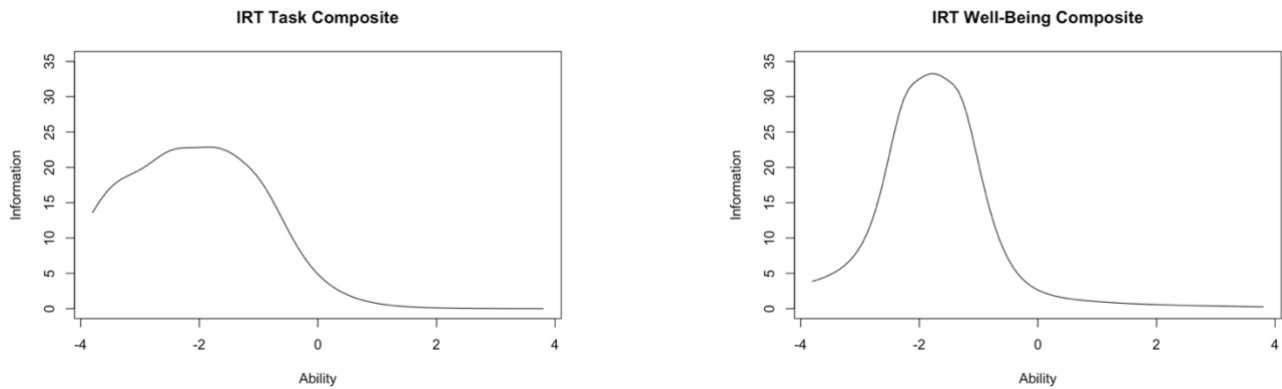
Figure S2: Item response theory diagnostics and factor analysis

<i>Descriptive and Fit Statistics</i>	Task Composite	Well-Being Composite
Mean (Standard Deviation) [0–100 points]	83.1 (16.7)	71.8 (16.6)
Log Likelihood	-88216	-110646
Cronbach's Alpha Internal Consistency	0.888	0.872
Root Mean Square Error of Residuals	0.08	0.08
Proportion Variance Explained by Single Domain	68.3%	64.7%
Empirical Chi Square Test for Unidimensionality	< 0.001	< 0.001

Histogram Distributions



Test Information Curves (Standardized VSQOL Ability)



Scree Plots Assess the Unidimensionality of Item Response Theory Domains

