

Supplemental Online Content

Bahit MC, Vora AN, Li Z, et al. Apixaban or warfarin and aspirin or placebo after acute coronary syndrome or percutaneous coronary intervention in patients with atrial fibrillation and prior stroke: a post hoc analysis from the AUGUSTUS trial. *JAMA Cardiol*. Published online May 25, 2022. doi:10.1001/jamacardio.2022.1166

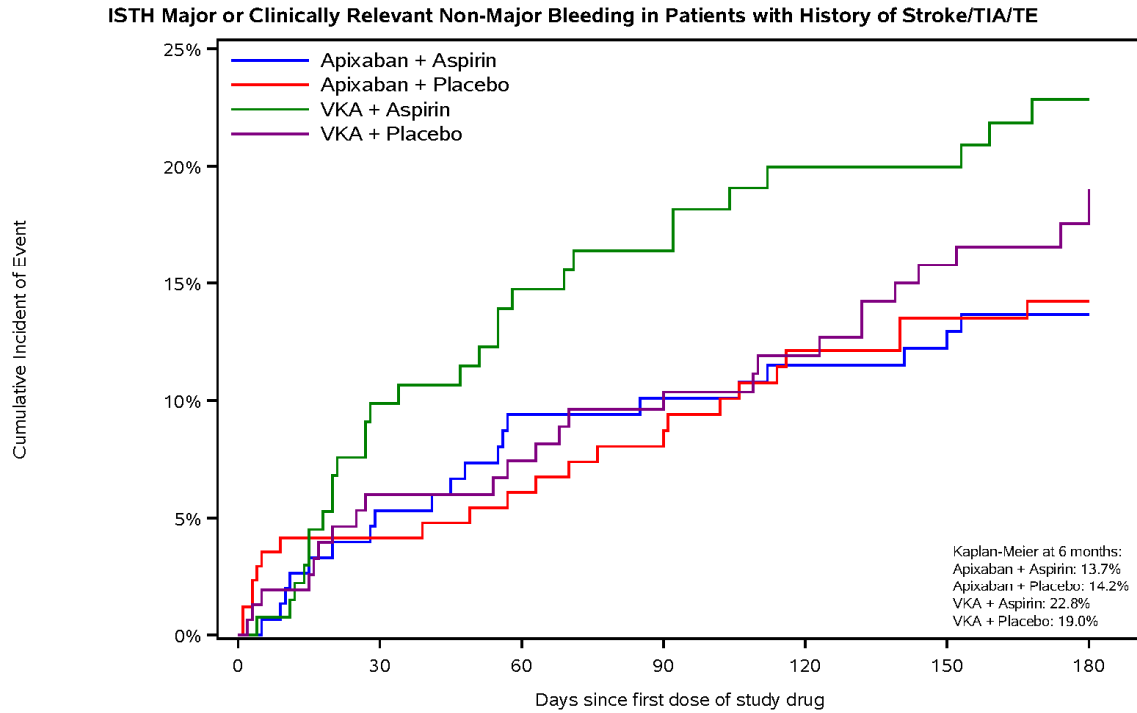
eFigure 1. Kaplan-Meier curves for ISTH major or CRNM bleeding in patients with (A) and without (B) prior stroke/TIA/TE

eFigure 2. Kaplan-Meier curves for death or hospitalization in patients with (A) and without (B) prior stroke/TIA/TE

eFigure 3. Kaplan-Meier curves for death or ischemic events in patients with (A) and without (B) prior stroke/TIA/TE

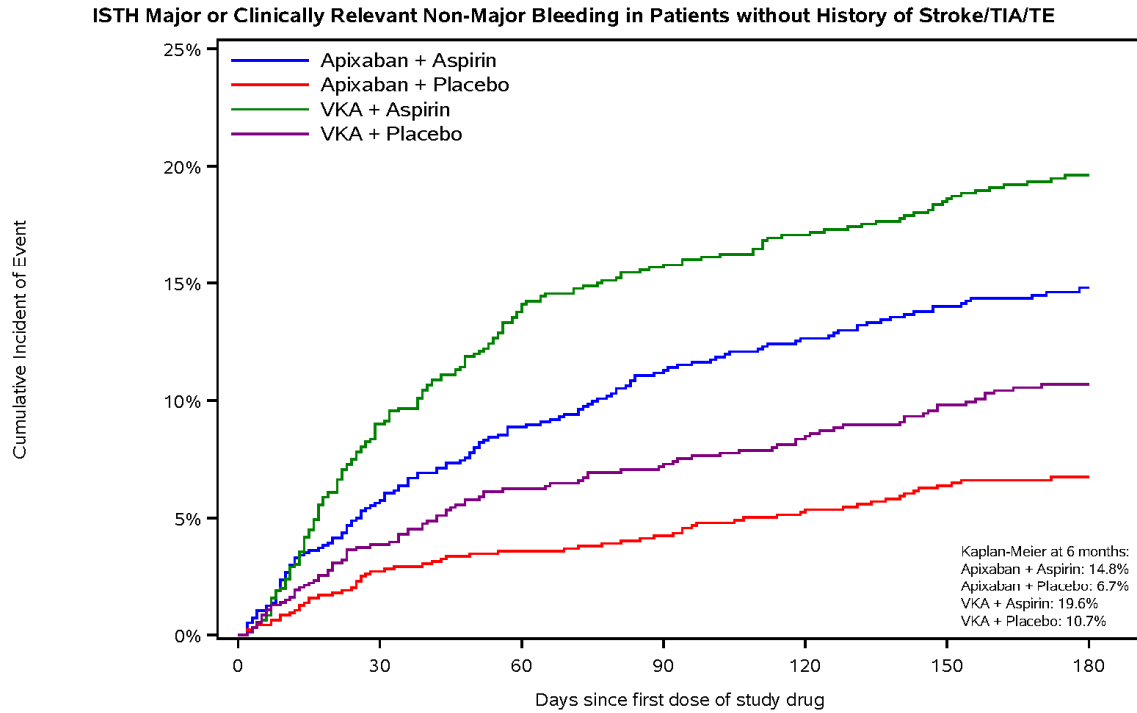
This supplemental material has been provided by the authors to give readers additional information about their work.

Figure 1A. Kaplan-Meier curves for ISTH major or CRNM bleeding in patients with prior stroke/TIA/TE



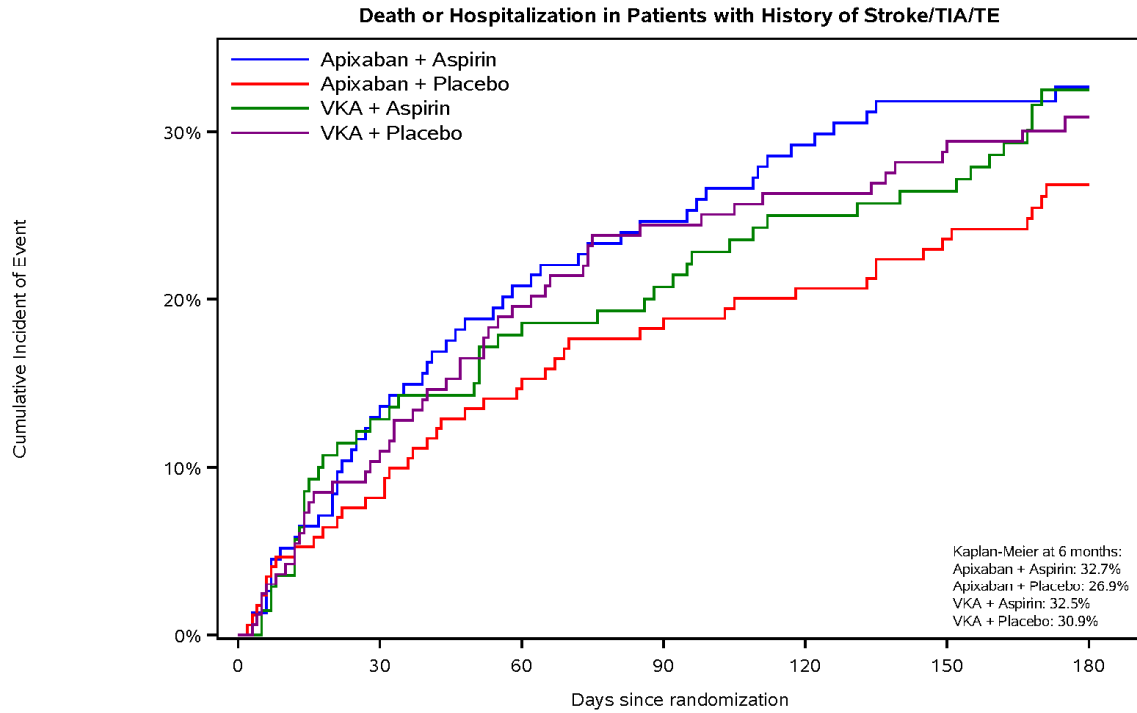
	0	30	60	90	120	150	180
Apixaban + Aspirin	153	141	133	129	125	123	130
Apixaban + Placebo	170	152	145	136	128	125	152
VKA + Aspirin	136	116	104	95	89	86	104
VKA + Placebo	158	137	129	121	114	109	57

Figure 1B. Kaplan-Meier curves for ISTH major or CRNM bleeding in patients with no prior stroke/TIA/TE



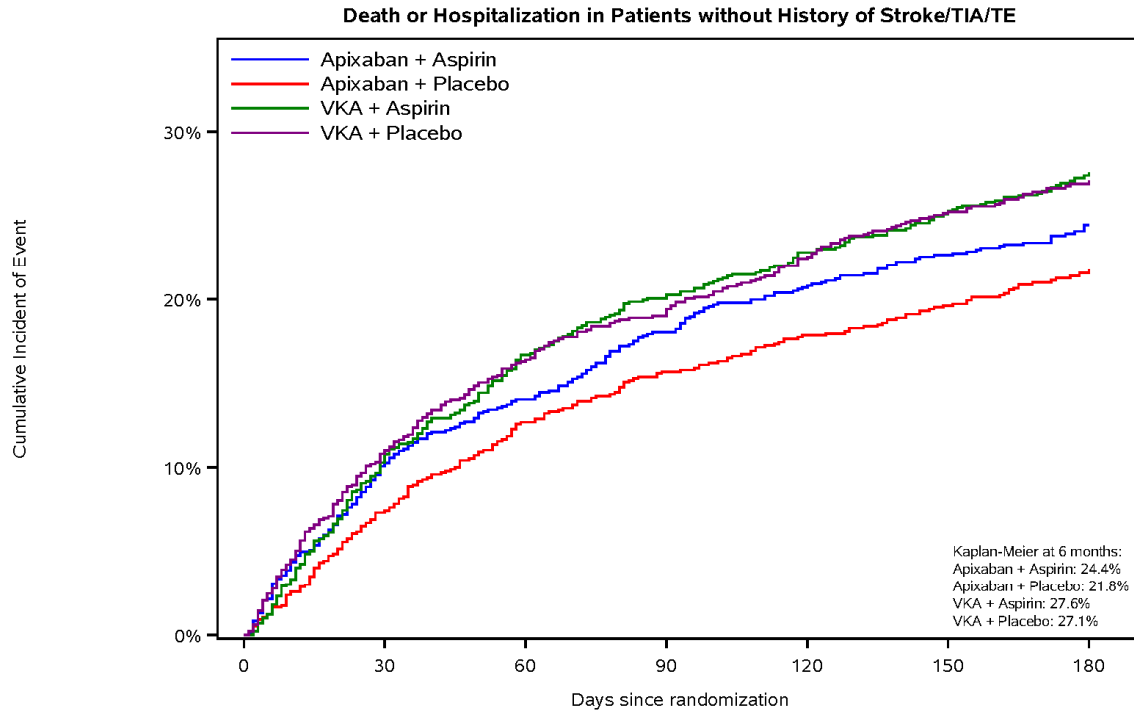
	Number at Risk						
Apixaban + Aspirin	983	887	834	800	771	751	836
Apixaban + Placebo	966	916	894	866	843	818	914
VKA + Aspirin	981	841	772	738	706	685	824
VKA + Placebo	961	866	815	793	766	740	942

Figure 2A. Kaplan-Meier curves for death or hospitalization in patients with prior stroke/TIA/TE



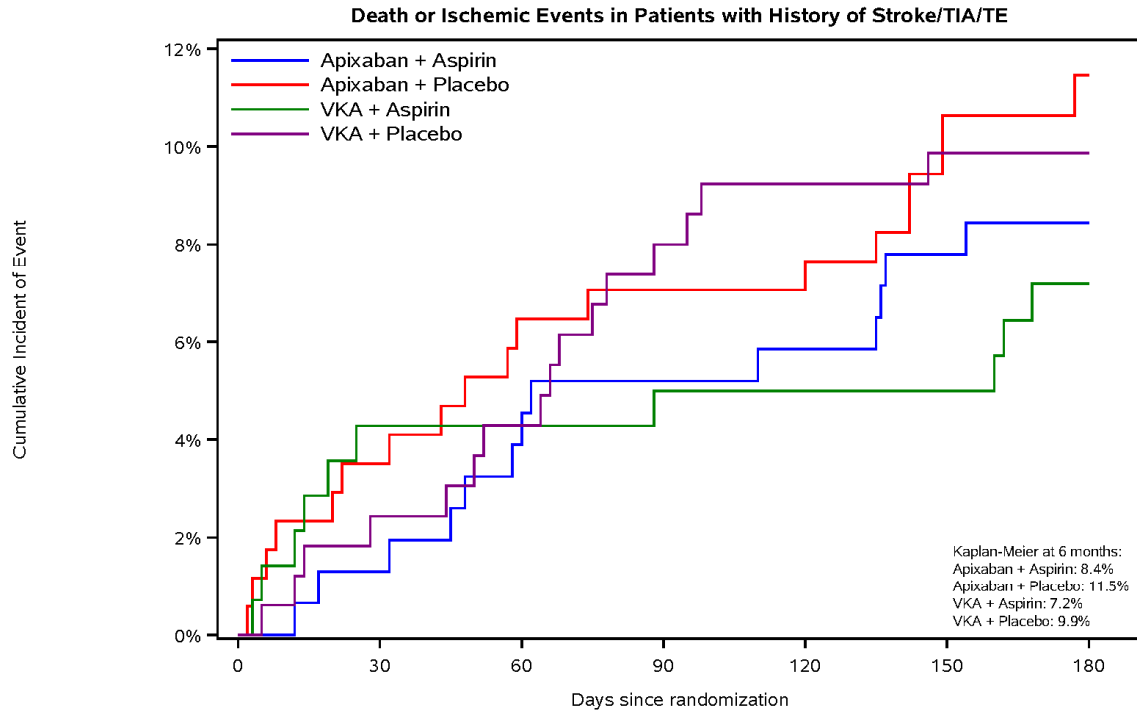
	Number at Risk						
Apixaban + Aspirin	155	134	122	116	109	105	108
Apixaban + Placebo	171	157	144	137	133	128	138
VKA + Aspirin	142	122	115	111	104	102	114
VKA + Placebo	165	147	131	122	119	115	136

Figure 2B. Kaplan-Meier curves for death or hospitalization in patients with no prior stroke/TIA/TE



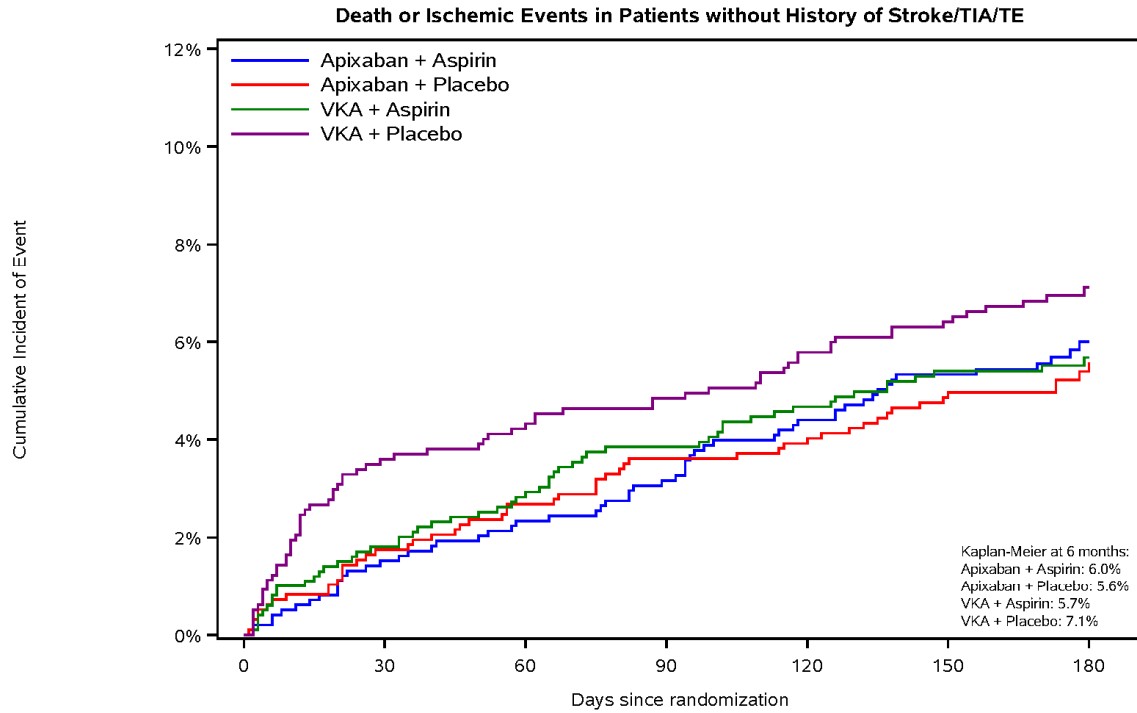
	Number at Risk						
Apixaban + Aspirin	988	884	840	799	771	750	806
Apixaban + Placebo	975	900	845	815	794	775	415
VKA + Aspirin	1004	887	817	781	753	727	430
VKA + Placebo	981	865	808	778	744	718	439

Figure 3A. Kaplan-Meier curves for death or ischemic events in patients with prior stroke/TIA/TE



	0	30	60	90	120	150	180
Apixaban + Aspirin	155	152	148	146	145	142	154
Apixaban + Placebo	171	165	158	156	156	150	168
VKA + Aspirin	142	134	134	133	132	132	160
VKA + Placebo	165	160	155	148	146	145	174

Figure 3B. Kaplan-Meier curves for death or ischemic events in patients with no prior stroke/TIA/TE



	Number at Risk						
	0	30	60	90	120	150	180
Apixaban + Aspirin	988	968	952	941	927	914	1010
Apixaban + Placebo	975	954	941	931	927	917	507
VKA + Aspirin	1004	971	952	938	927	915	1108
VKA + Placebo	981	936	925	915	905	898	1112