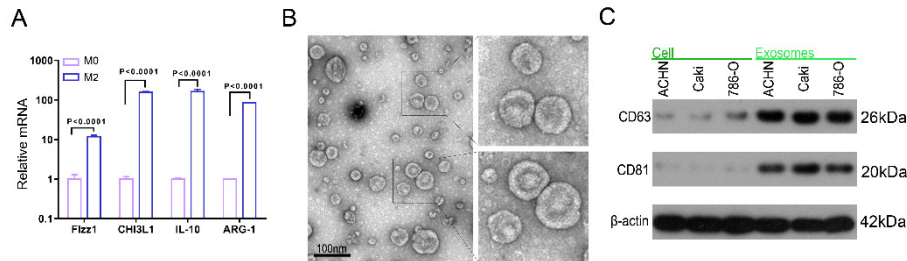
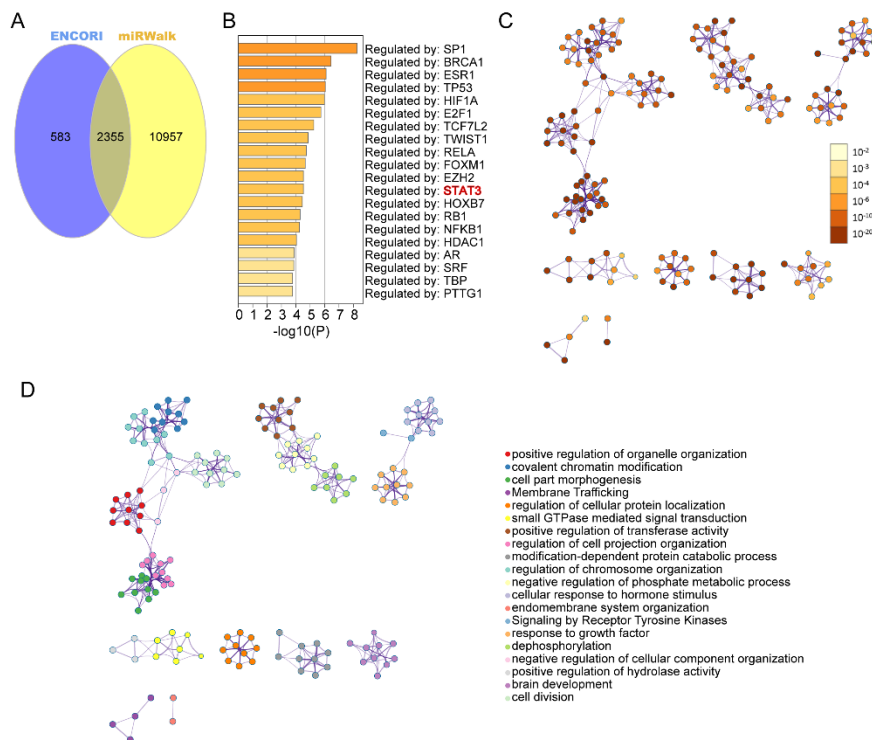


Supplementary Figure 1



A. RT-qPCR determined the expression of CHI3L1, IL-10, RETNLB (Fizz1), and Arg1. **B.** The electron microscopic image of RCC-derived exosomes. **C.** The expression of CD63 and CD81 in three RCC cell lines (ACHN, Caki-1, 786-O) through Western blotting.

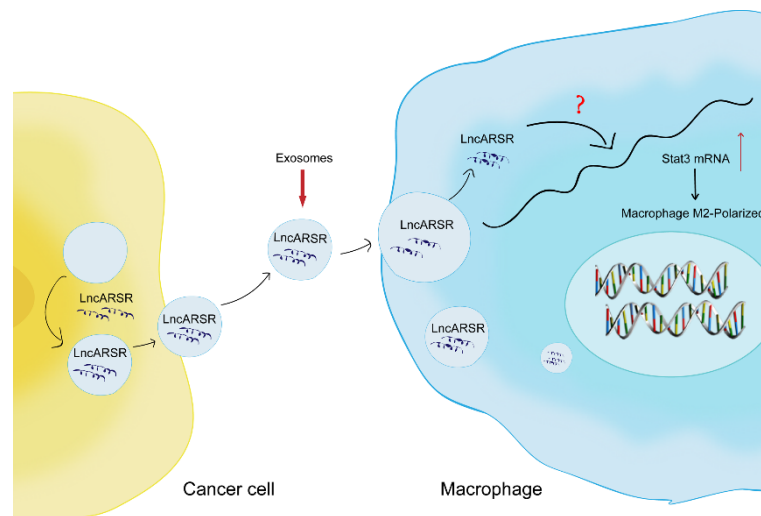
Supplementary Figure 2



A. Bioinformatics analysis was used to predict the downstream regulatory genes of miR-34/449-5p, and the intersection analysis of Venn plot was drawn, and 2355 intersection genes were obtained. **B.** The signal pathway prediction analysis of 2355 genes were carried out to obtain the possible target protein data. **C-D.** The signal pathway prediction analysis of 2355 genes were carried out to obtain the possible

signal pathway data.

Supplementary Figure 3



Tumor released exosomes can be taken up by macrophages and transmit biological information to macrophages, thus inducing the formation of TAM.