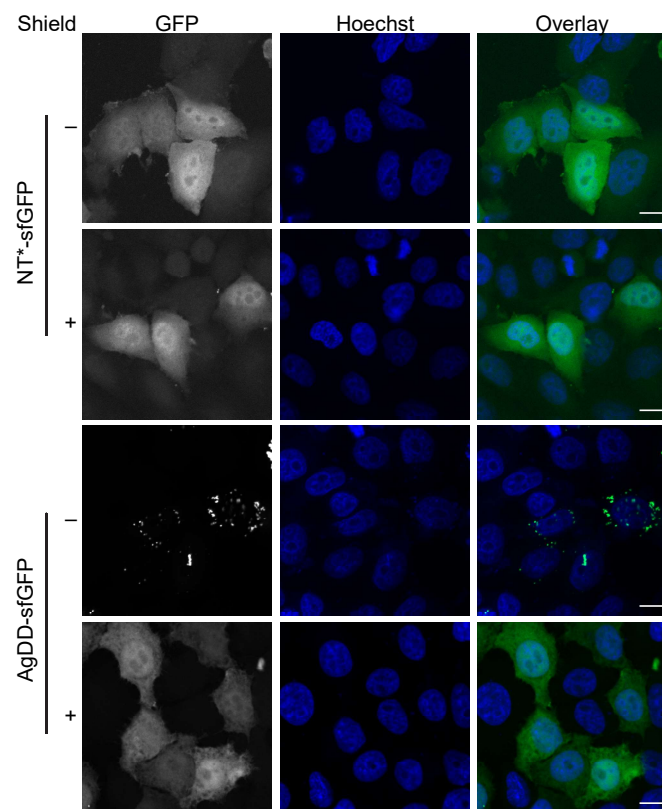


## **Supplementary Figure 1**

Hela cells were transiently transfected with AgDD-sfGFP or NT\*-sfGFP and incubated in the absence or presence of 1  $\mu$ M Shield-1 for 16 hours. Cells were fixed 24 hrs after transfection with 4% PFA and counterstained with Hoechst. Scale bar 20  $\mu$ m.

Supplementary Figure 1



## **Supplementary Figure 2**

Uncropped scans of western blots. Labels refer to the panels of the figures in the main manuscript.

Figure 1b

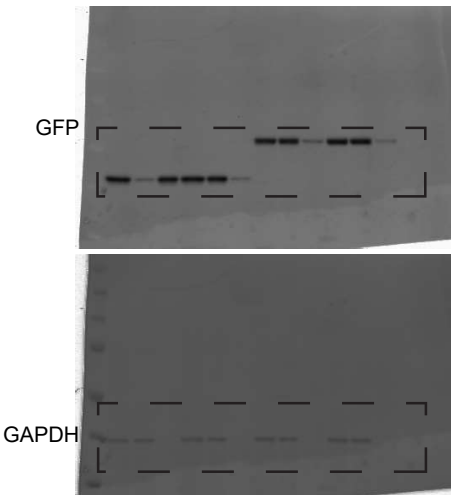


Figure 2c

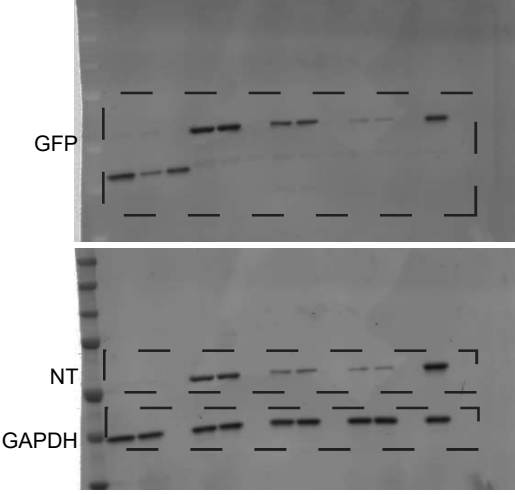


Figure 3c

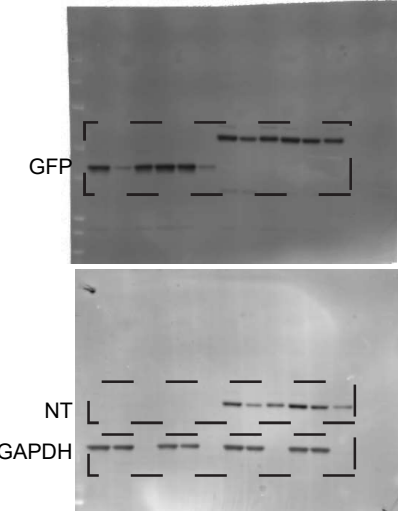


Figure 3d

