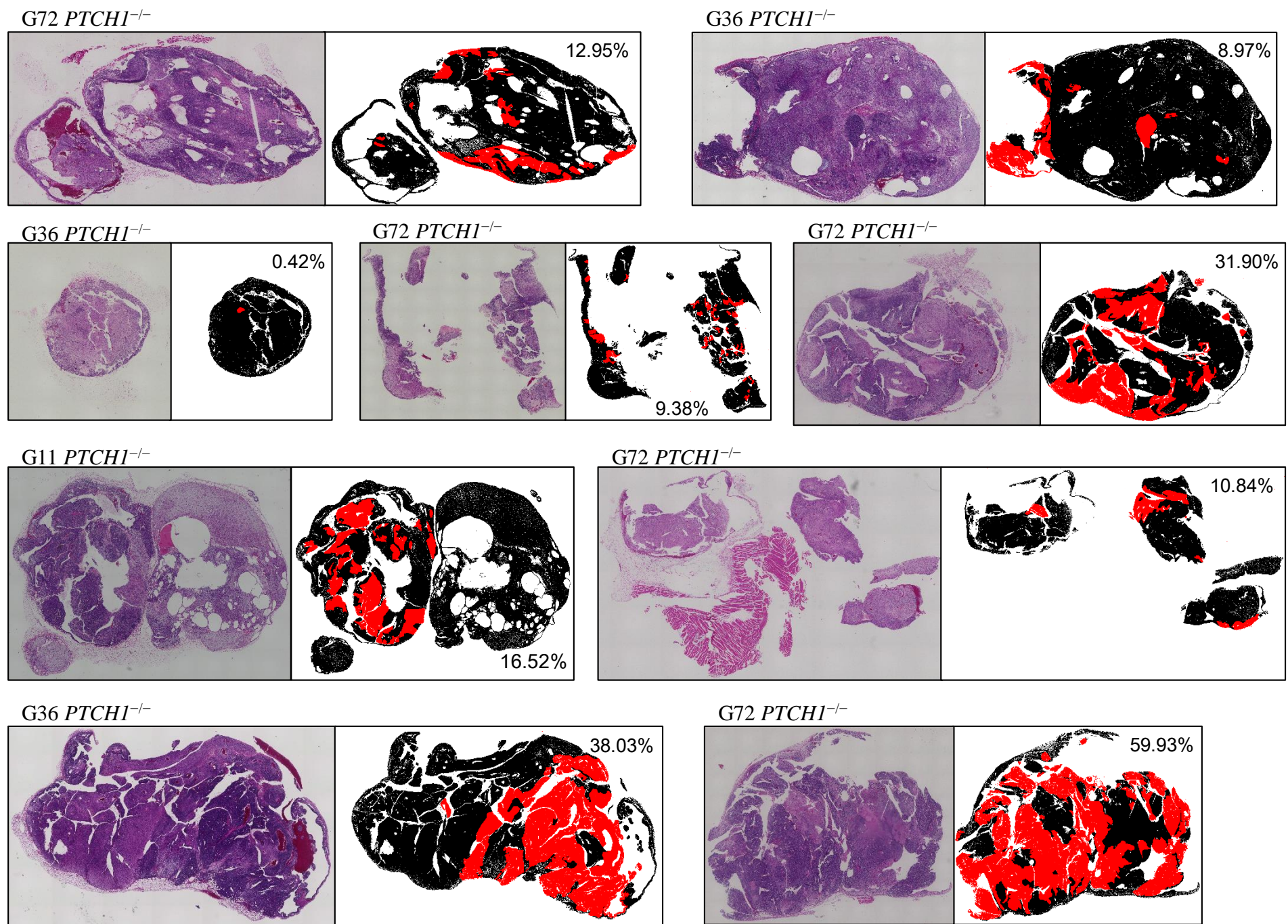


PTCH1^{-/-} teratoma



PTCH1^{+/-} teratoma

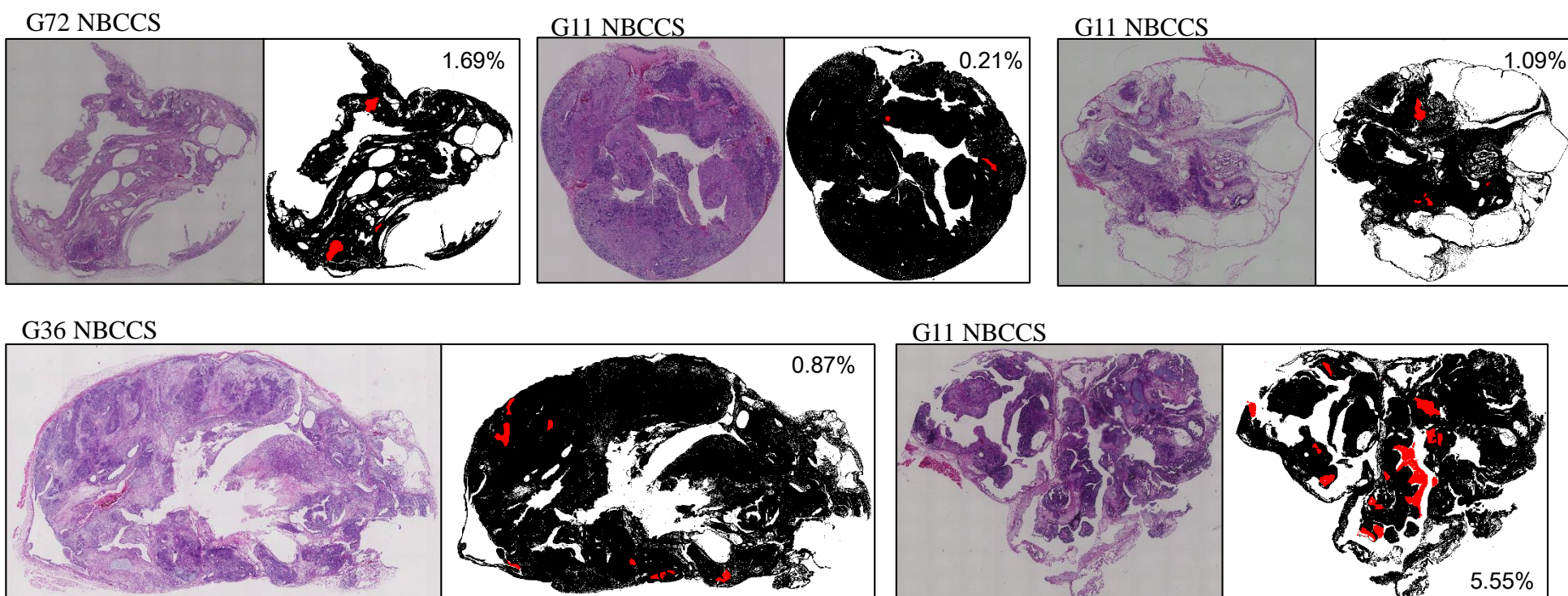


Figure S2. Whole slice images of *PTCH1*^{-/-} and *PTCH1*^{+/-} teratomas.

The left half of each panel represents an image of a HE-stained teratoma slice. In the right half, the area of the teratoma is filled with black from which the apparent tissue from a mouse origin was excluded. Medulloblastoma-like tissue expressing β III tubulin, synaptophysin, and Ki67 is filled in red. The numbers of pixels in the black and red areas were counted by PixelCounter (<https://vector.co.jp/soft/win95/art/se385899.html>). The percentage of areas occupied by medulloblastomas is indicated in the right half.