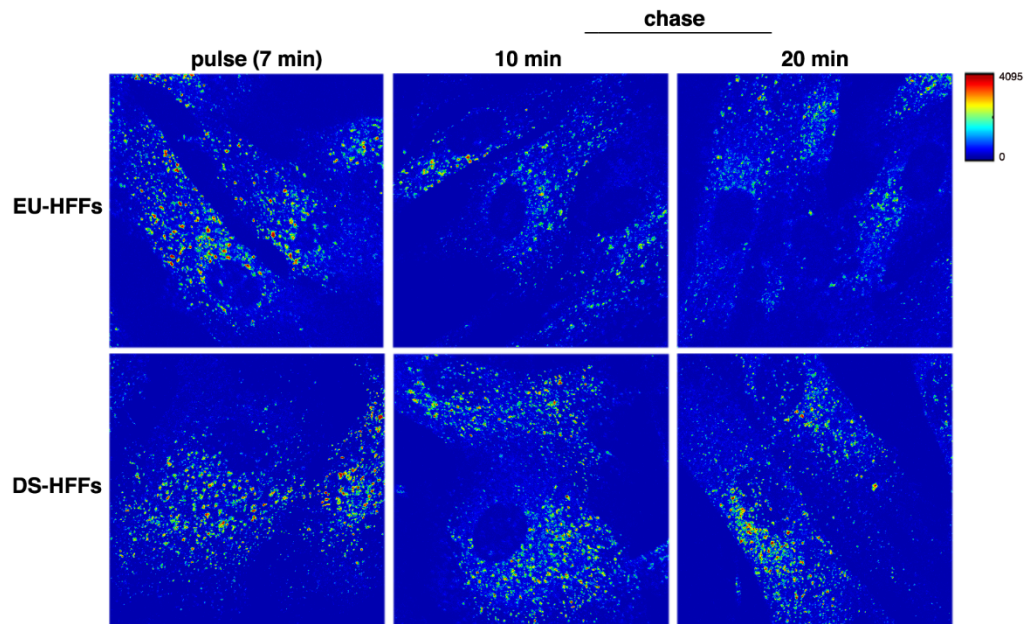
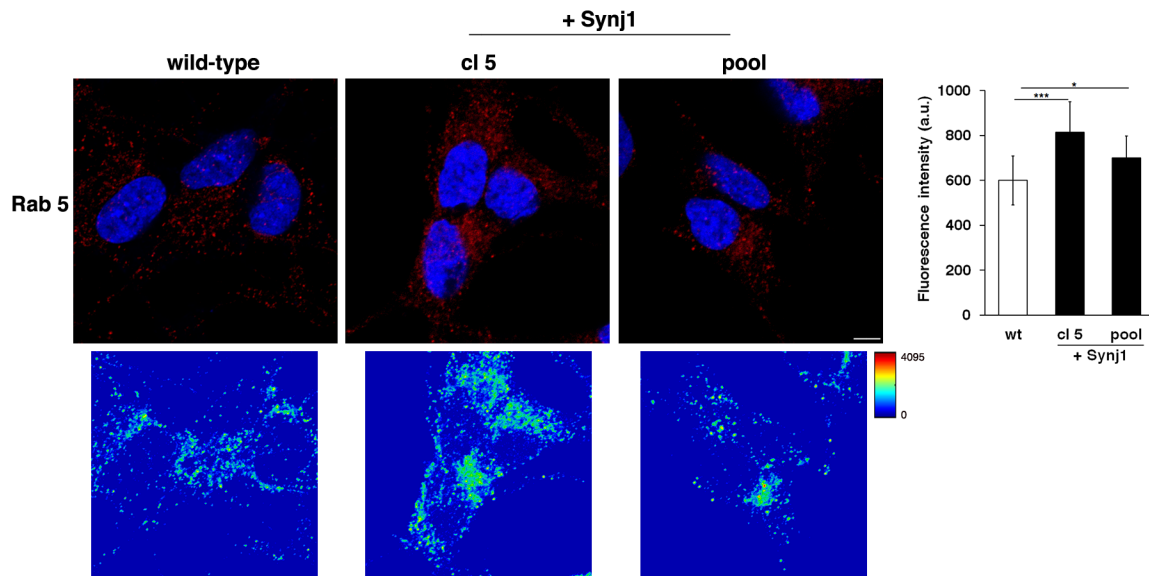


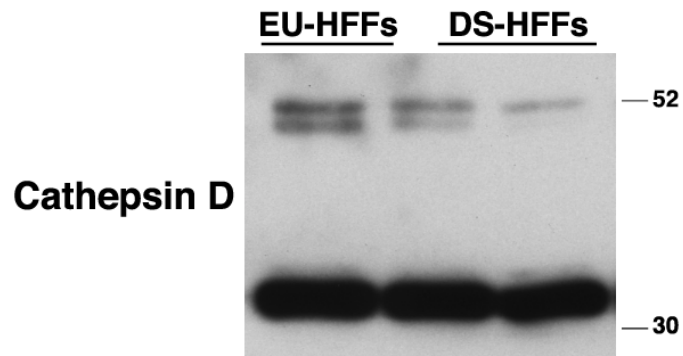
Supplementary Material



Supplementary Figure 1. TF recycling in DS fetal fibroblasts. Note that the fluorescence signal decreases in EU-HFFs, while remains higher in DS-HFFs indicating TF accumulation.



Supplementary Figure 2. Synj1 overexpression affects the homeostasis of early endosomes in SH-SY5Y cells. SH-SY5Y cells stably transfected with cDNA encoding for wild-type Synj1 were stained with Rab5 antibody detected with Alexa-546-conjugated secondary antibodies. Serial confocal sections were collected from the top to the bottom of the cells. The 3D reconstructions and corresponding intensity maps are shown. Scale bars, 5 μ m. Mean fluorescence intensity (arbitrary unit, a.u.) of Rab5-positive structures is shown. The bars show the relative mean value \pm SD of three independent experiments. * $p < 0.05$, *** $p < 0.001$, Student's t -test.



Supplementary Figure 3. Levels of cathepsin D are comparable in EU-HFFs and DS-HFFs. The longer exposure of immunoblot in Figure 8C is shown. Mature (33 kDa) and immature (52 kDa) forms of cathepsin D are visible.