

Supplementary Information

AXL/CDCP1/SRC axis confers to acquired resistance to osimertinib in lung cancer

Yuichi Murakami^{1,2}, Daiki Kusakabe³, Kosuke Watari⁴, Akihiko Kawahara⁵, Koichi Azuma⁶, Jun Akiba⁵, Masahiko Taniguchi⁷, Michihiko Kuwano¹ and Mayumi Ono^{1,8*}

Author affiliations

¹Cancer Translational Research Center, St. Mary's Institute of Health Sciences, Kurume, Fukuoka, Japan

²Department of Pharmaceutics, Graduate School of Pharmaceutical Sciences, Kyushu University, Fukuoka, Japan

³Physical Chemistry for Life Science Laboratory, Faculty of Pharmaceutical Sciences, Kyushu University, Fukuoka, Japan.

⁴Department of Pharmacology, School of Medicine, University of California, San Diego, La Jolla, CA, USA

⁵Department of Diagnostic Pathology, Kurume University Hospital, Kurume, Fukuoka, Japan.

⁶Division of Respiriology, Neurology and Rheumatology, Department of Internal Medicine, Kurume University School of Medicine, Kurume, Fukuoka, Japan

⁷Department of Surgery, St. Mary's Hospital, Kurume, Fukuoka, Japan

⁸Department of Pharmaceutical Oncology, Graduate School of Nursing, St. Mary's College, Kurume, Fukuoka, Japan

***Corresponding Author:**

Mayumi Ono, Ph.D.

Department of Pharmaceutical Oncology, Graduate School of Nursing, St. Mary's College
422 Tsubukuhonmachi, Kurume, Fukuoka, 830-8558, Japan;

TEL : +81-942-50-0721

FAX : +81-942-34-5926

E-mail: ono@st-mary.ac.jp

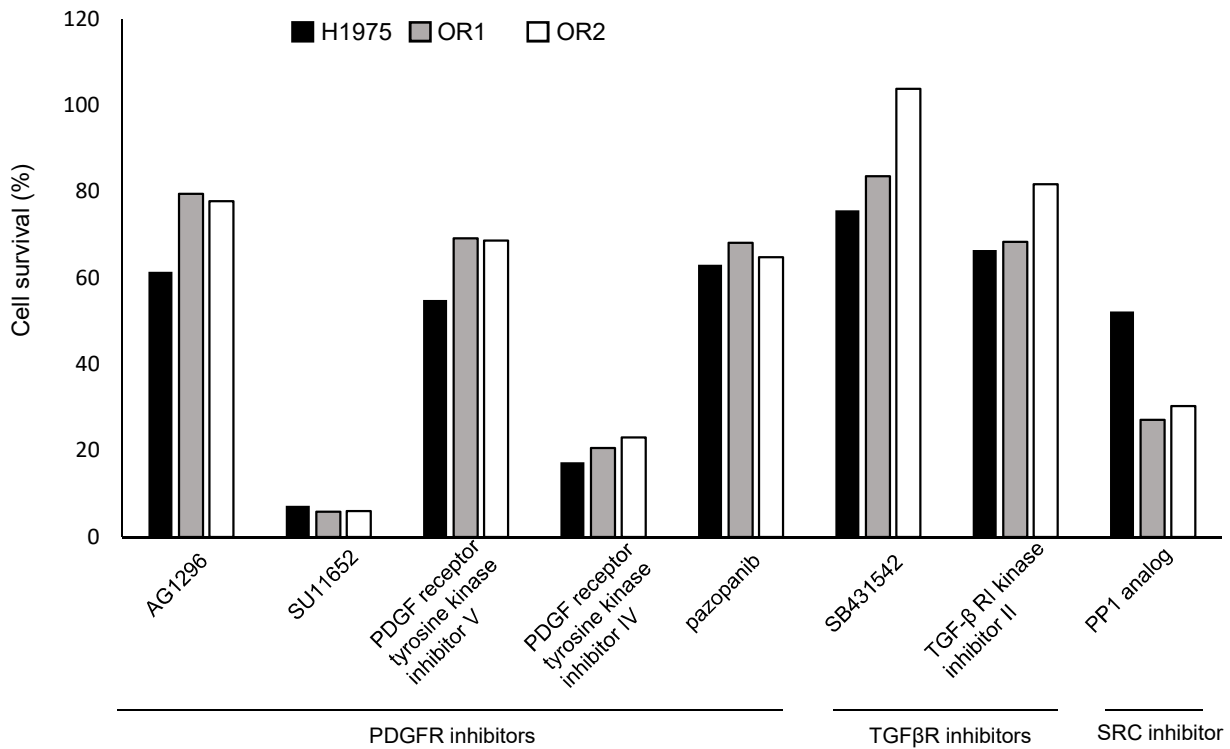


Figure S1. OR1 and OR2 cells could not exhibit high sensitivities to PDGFR and TGFβR inhibitors as compared with the parental cells. The sensitivity to kinase inhibitors was assessed using SCADS inhibitor kit. H1975, OR1, and OR2 cells were treated with kinase inhibitors at 5 μM for 96 hours and subjected to WST assay. Values are expressed as the percentage of the value in the absence of drugs.

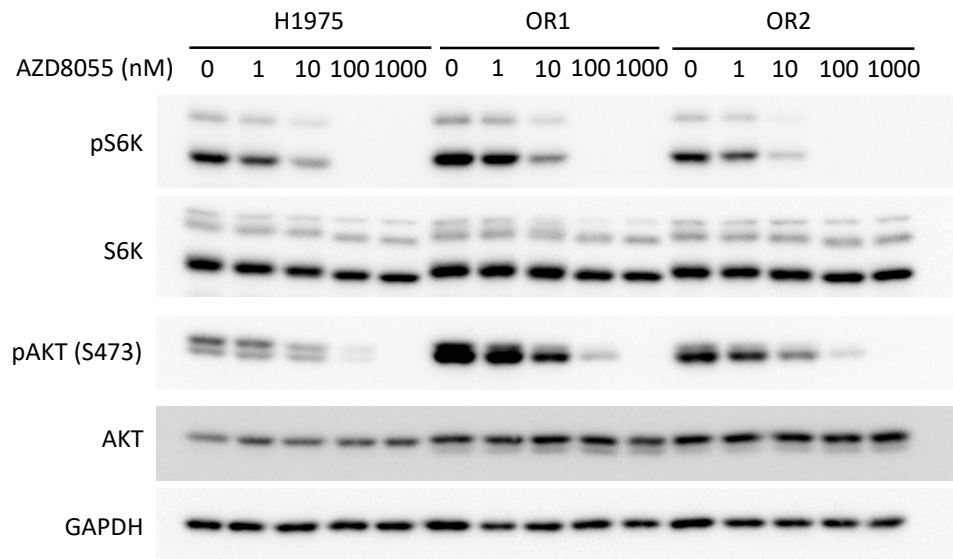


Figure S2. The inhibitory effects of AZD8055 on S6K and AKT activation.
Cells were exposed to AZD8055 for 6 hours.

Table S1. Osimertinib resistant cells show collateral sensitivity to inhibitors of SFK

Drugs	Targets	IC ₅₀ , μM ¹⁾		
		H1975	OR1	OR2
Crizotinib	MET, ALK	1.82 (1)	1.38 (0.76)	1.20 (0.66)
PPP	IGF-1R	0.65 (1)	0.54 (0.83)	0.74 (1.14)
Sorafenib	RAF, VEGFR2 PDGFR	4.74 (1)	5.32 (1.12)	5.21 (1.10)
Dasatinib	SRC, ABL, KIT, EPH	0.23 (1)	0.0049 (0.021)	0.0207 (0.09)
PP1	SRC, LCK, FYN, KIT, EGFR	9.60 (1)	1.88 (0.20)	3.07 (0.32)
Saracatinib	SRC, LCK, FYN, KIT, EGFR	3.65 (1)	0.55 (0.15)	0.53 (0.15)
AZD8055	mTORC1, C2	0.048 (1)	0.015 (0.31)	0.016 (0.33)
GSK650394	SGK1/2	65.24 (1)	20.59 (0.32)	53.78 (0.82)
LY294002	PI3K	21.35 (1)	9.79 (0.46)	17.10 (0.80)
AKT inhibitor IV	AKT	0.19 (1)	0.21 (1.11)	0.28 (1.47)
U0126	MEK1/2	ND ²⁾	ND ²⁾	ND ²⁾
SP600125	JNK1/2, Aurora A	22.30 (1)	51.76 (2.32)	26.83 (1.20)

1) IC₅₀ values (μM) are presented as average values of triplicate experiments. The relative drug sensitivity for each drug is presented in parenthesis as the IC₅₀ of OR1/2 normalized to the IC₅₀ of H1975 cells.

2) ND: not detectable, no cell toxicity is seen by the drug up to 30 μM

Original western blot images

Figure 1a

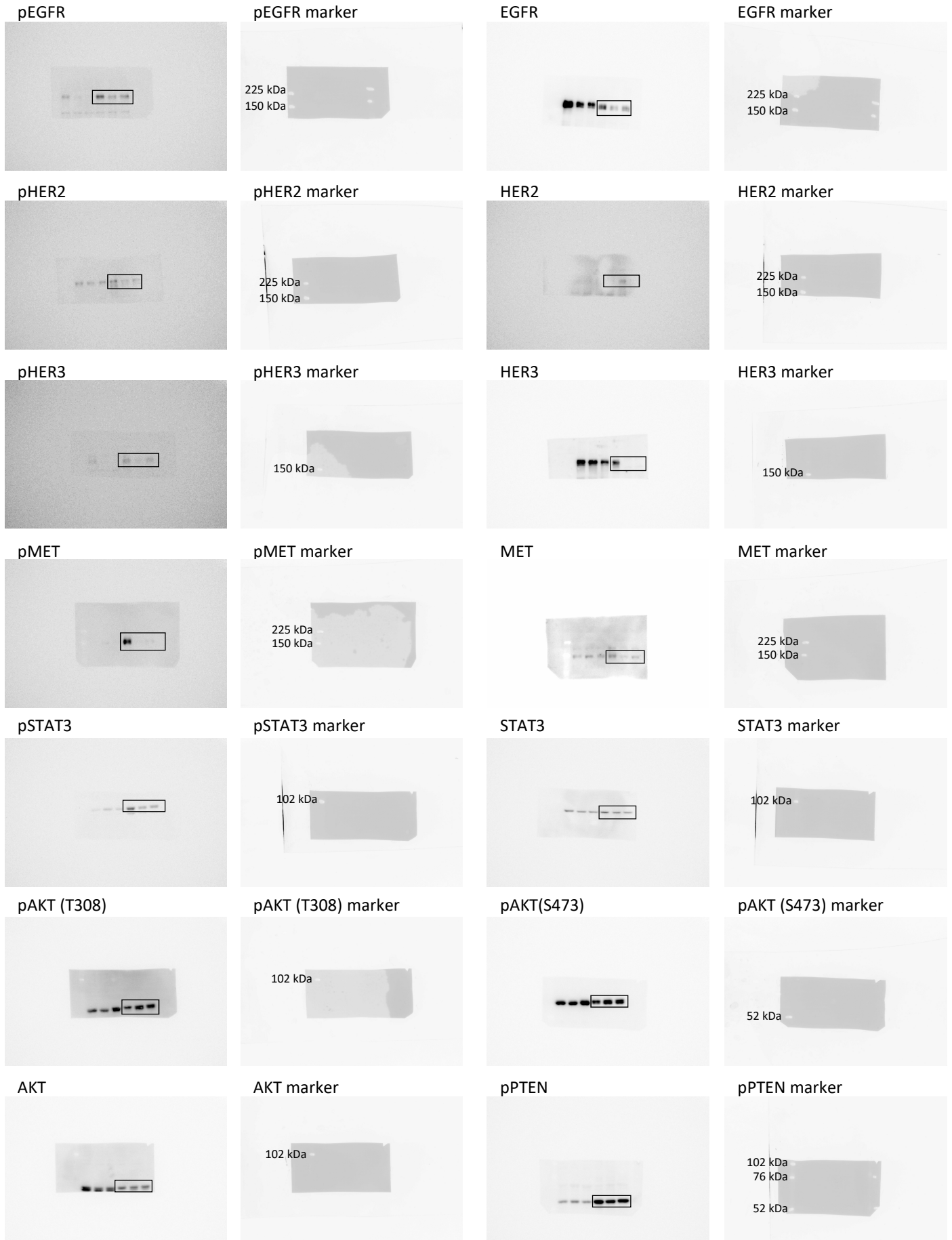


Figure 1a

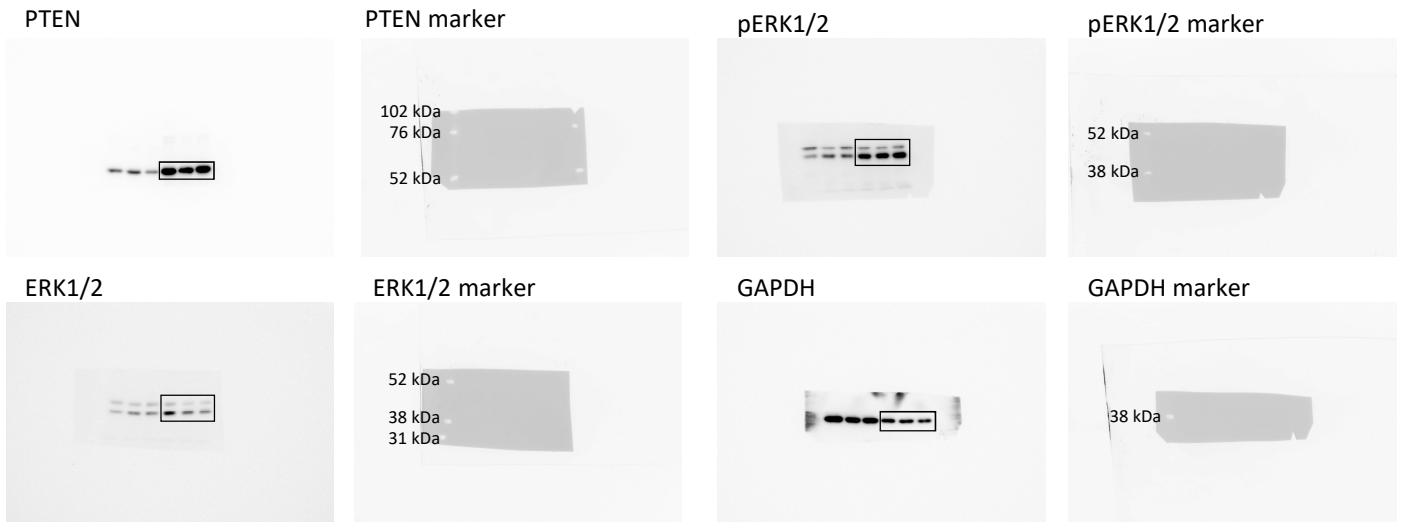


Figure 1b

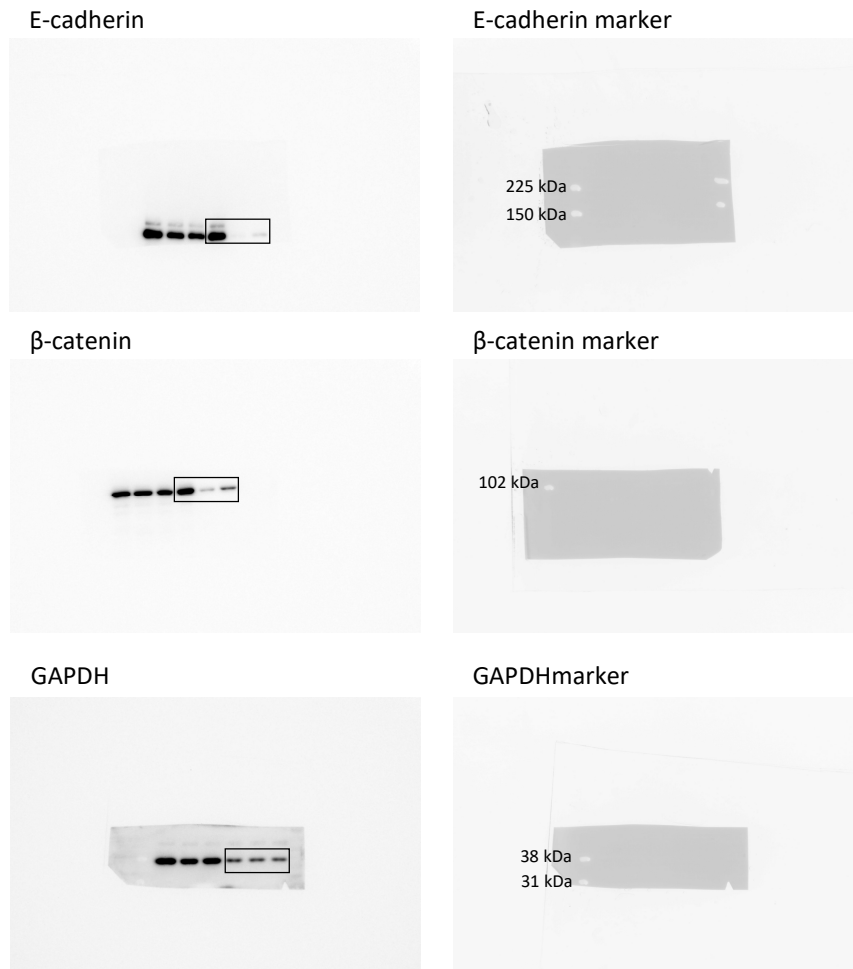


Figure 1c

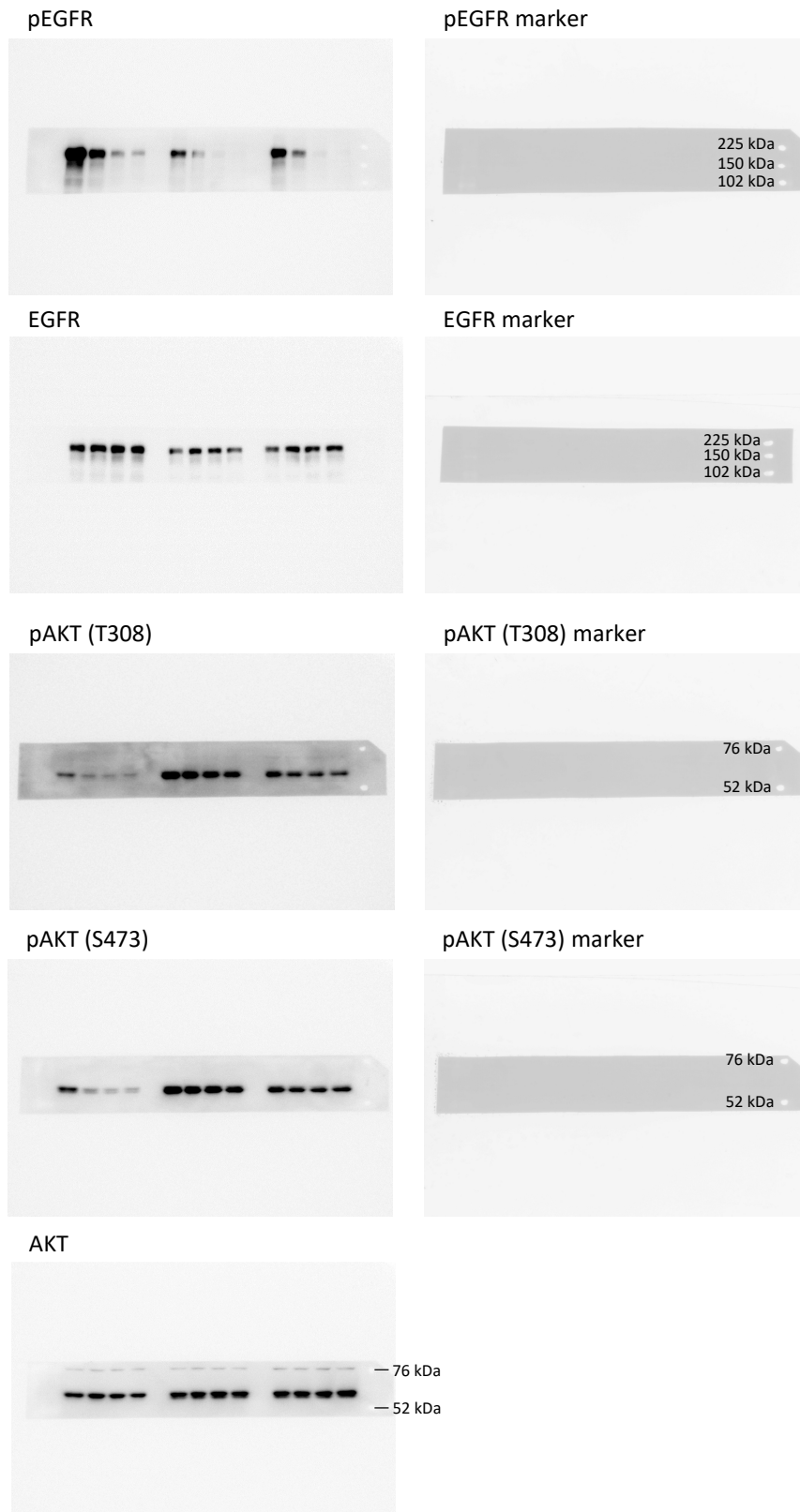


Figure 1c

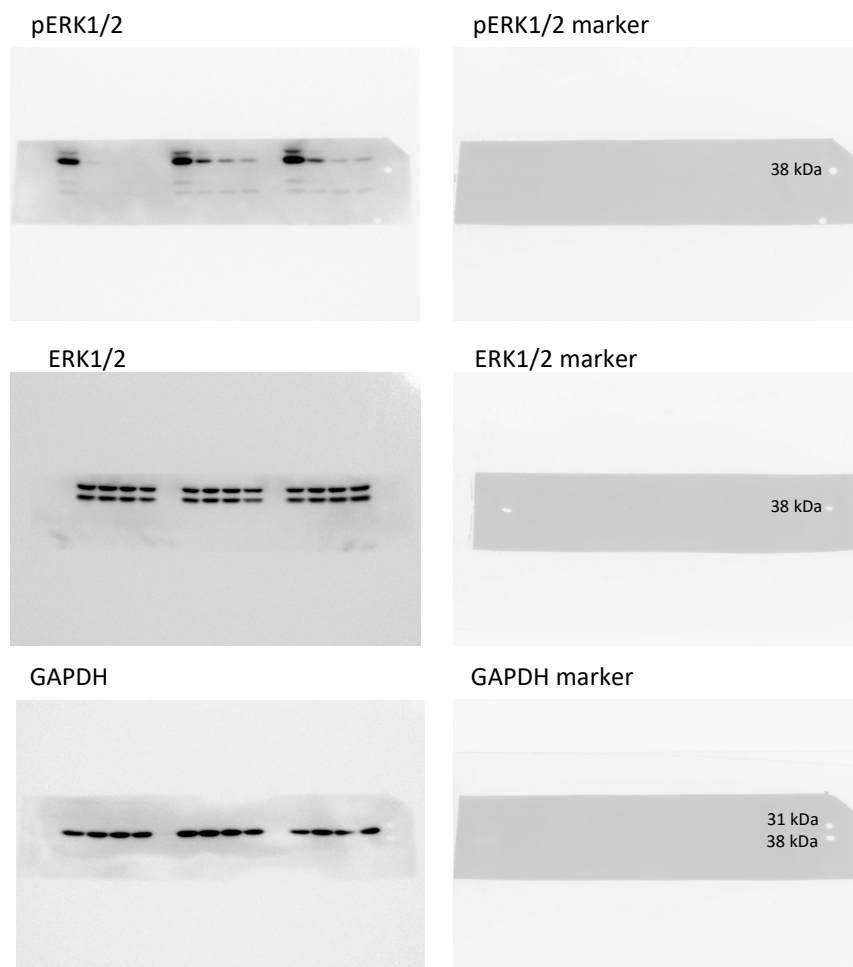


Figure 2a

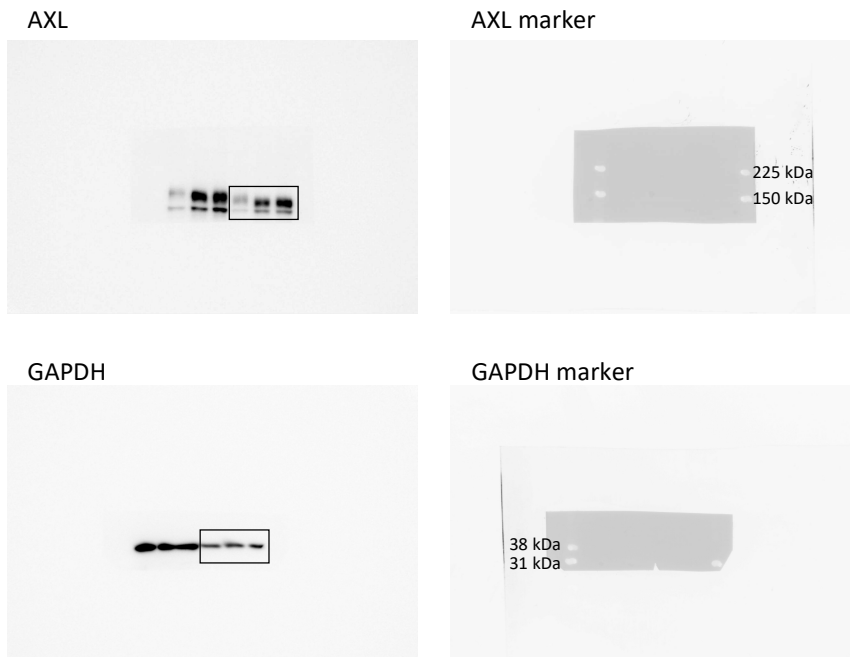


Figure 2b

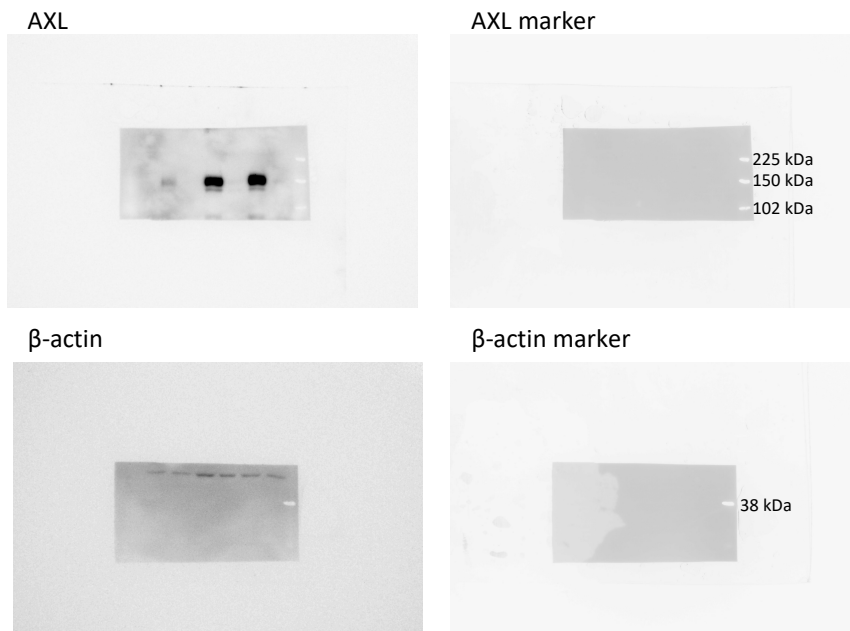


Figure 2d

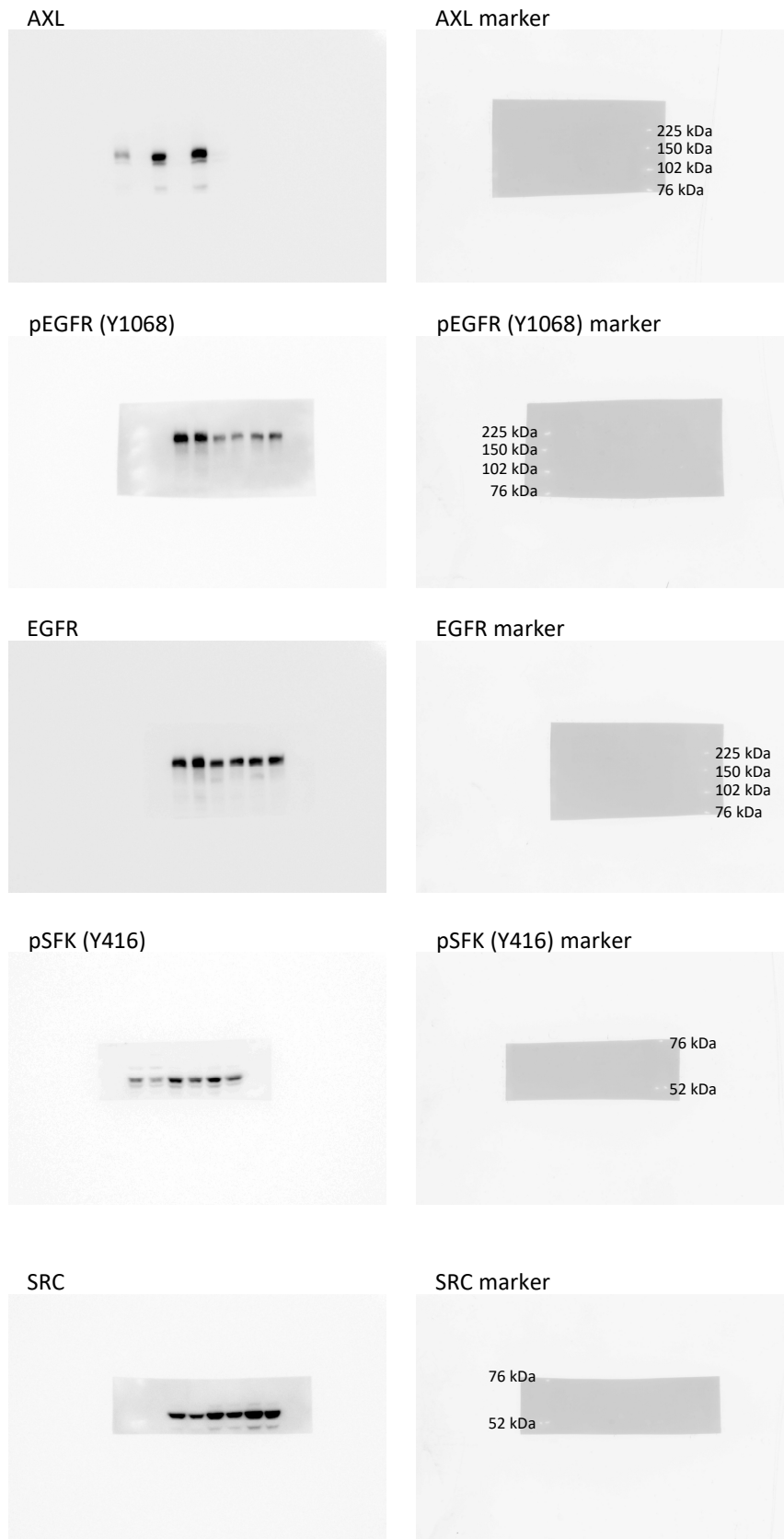


Figure 2d

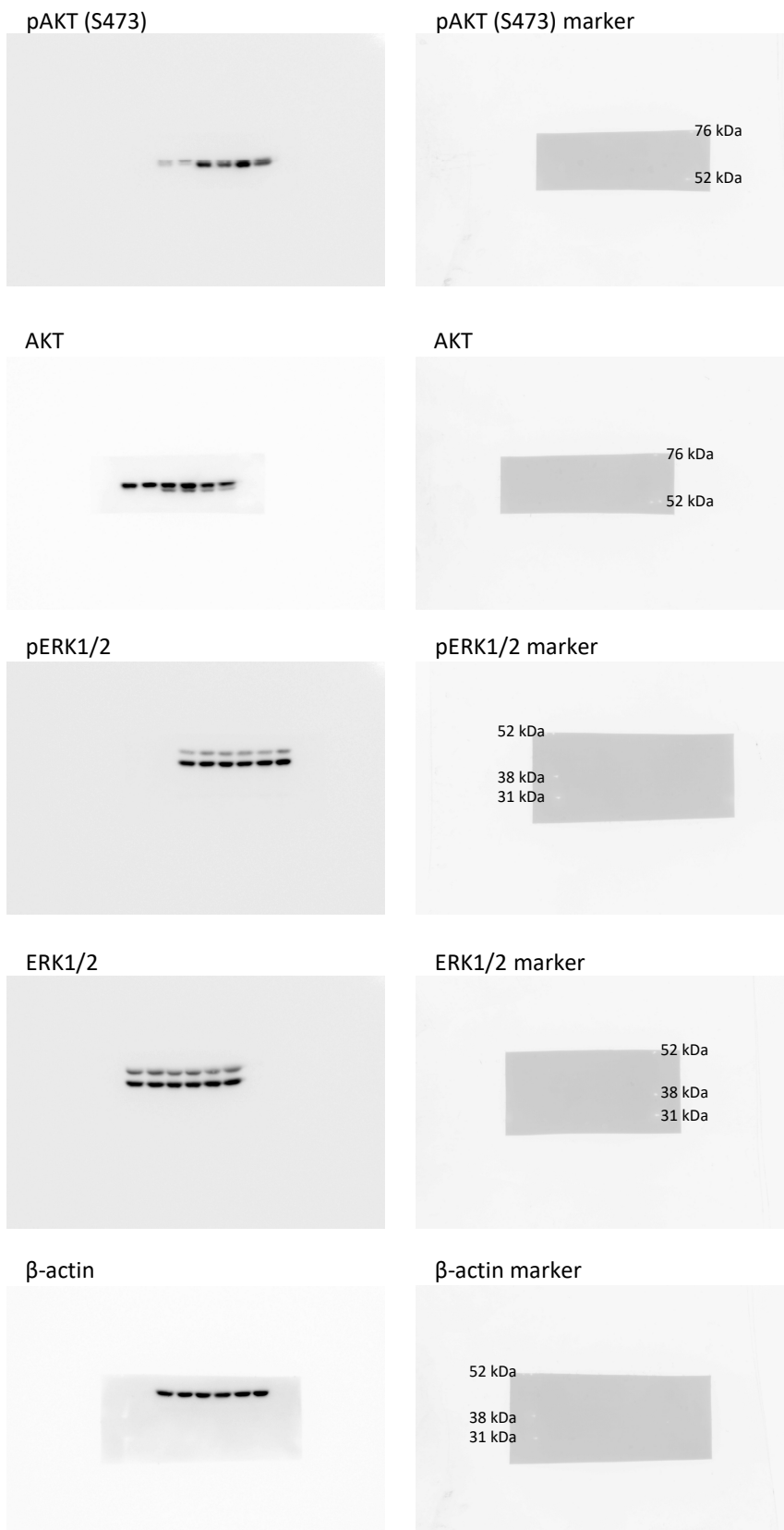


Figure 2f



Figure 3a

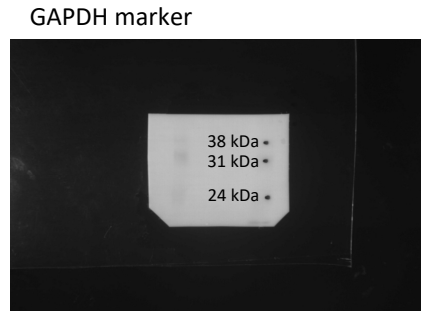
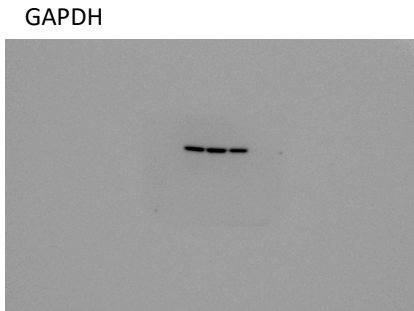
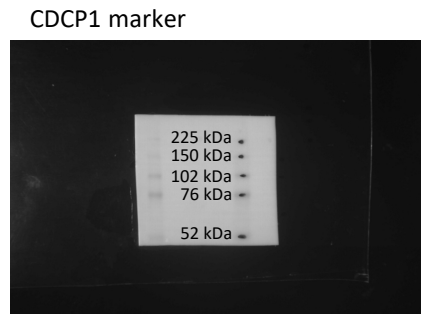
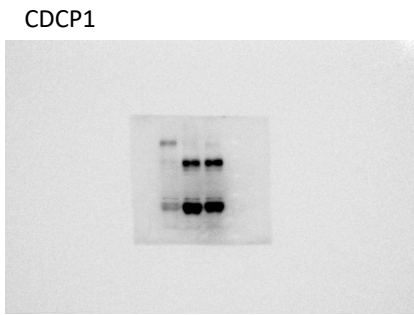


Figure 3b

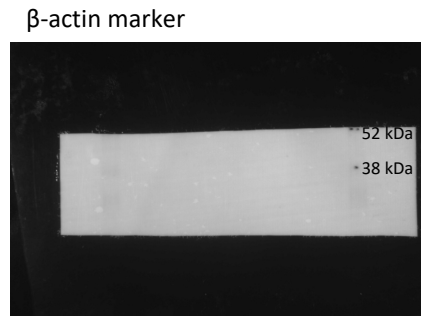
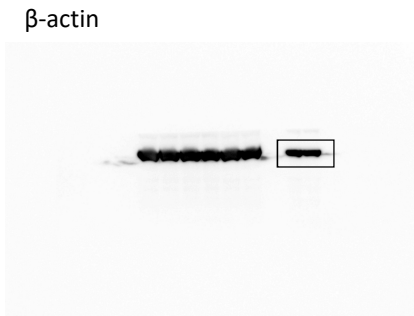
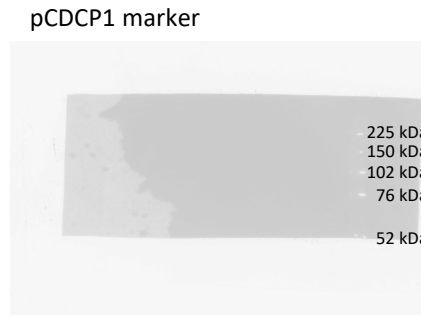
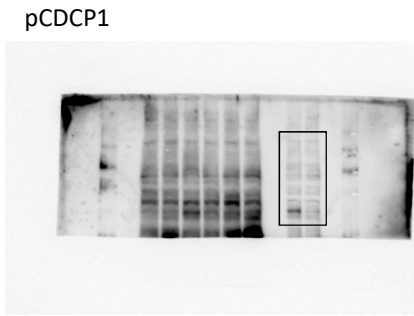
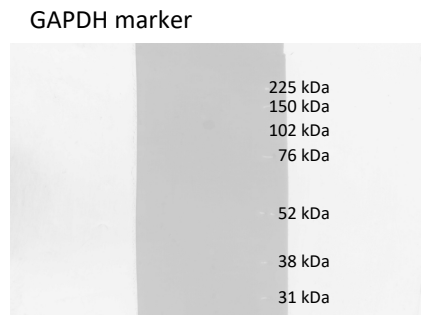
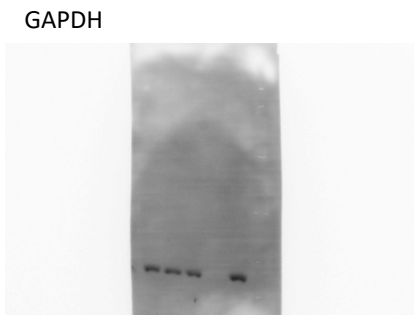
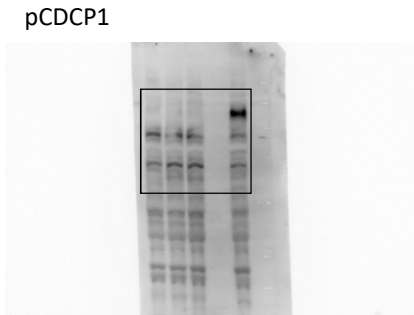
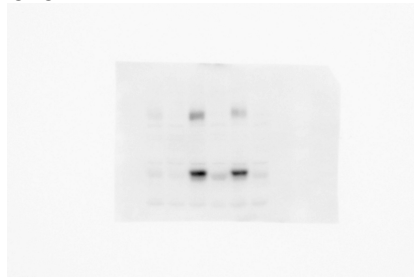
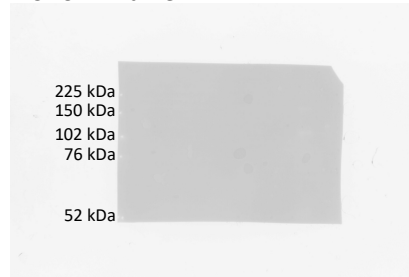


Figure 3d

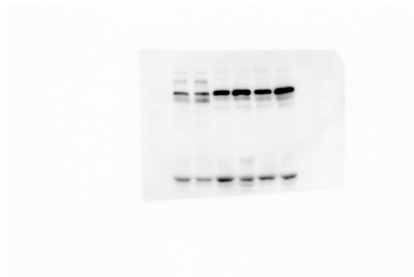
CDCP1



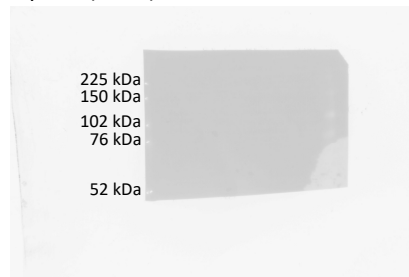
CDCP1 marker



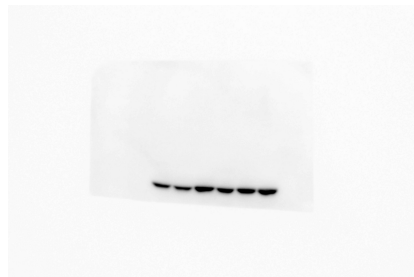
pSFK (Y416)



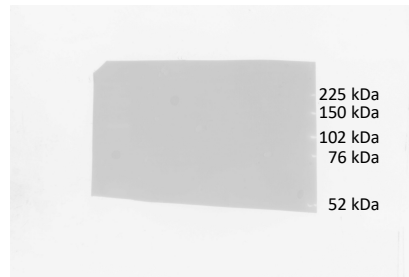
pSFK (Y416) marker



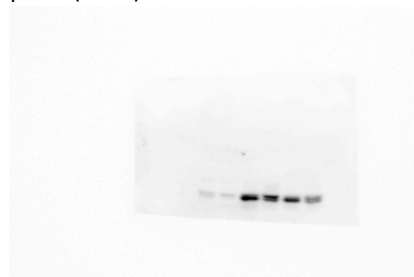
SRC



SRC marker



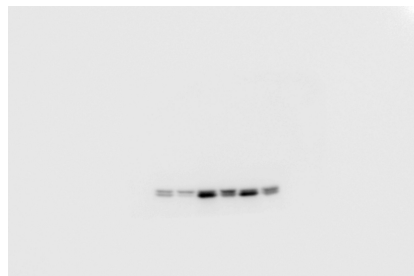
pAKT (T308)



pAKT (T308) marker



pAKT (S473)



pAKT (S473) marker



Figure 3d

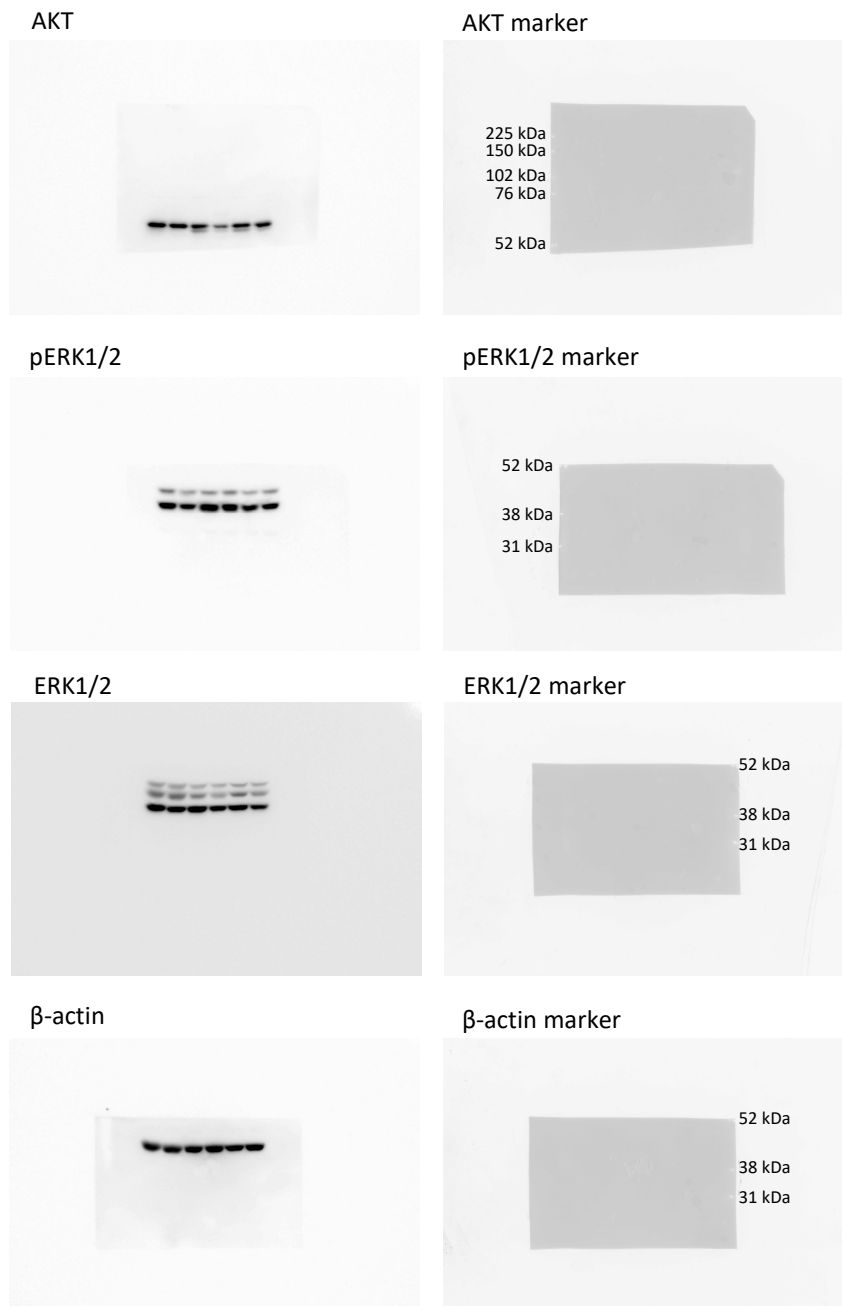


Figure 3e

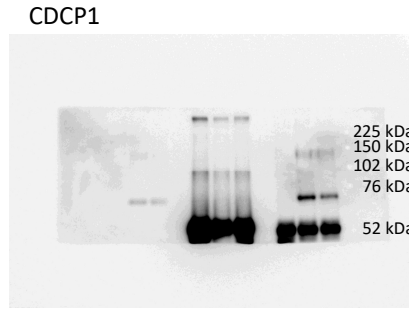
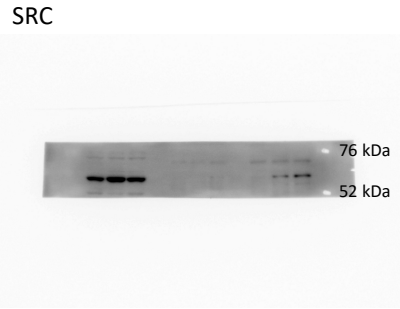


Figure 3f

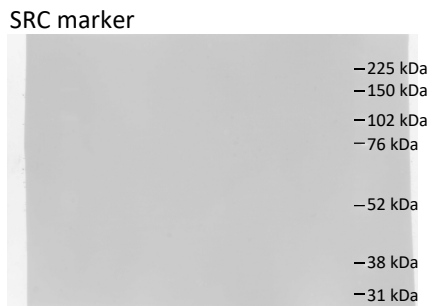
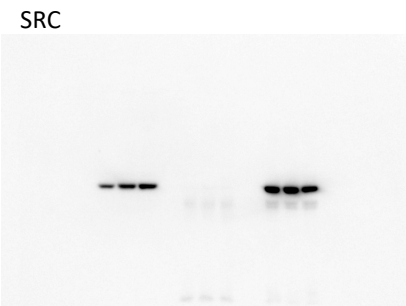
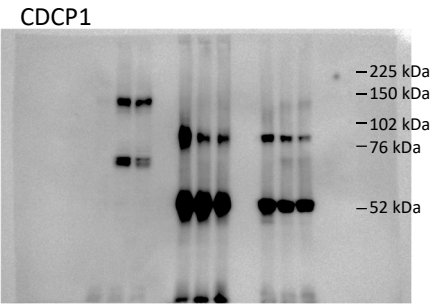


Figure 4a

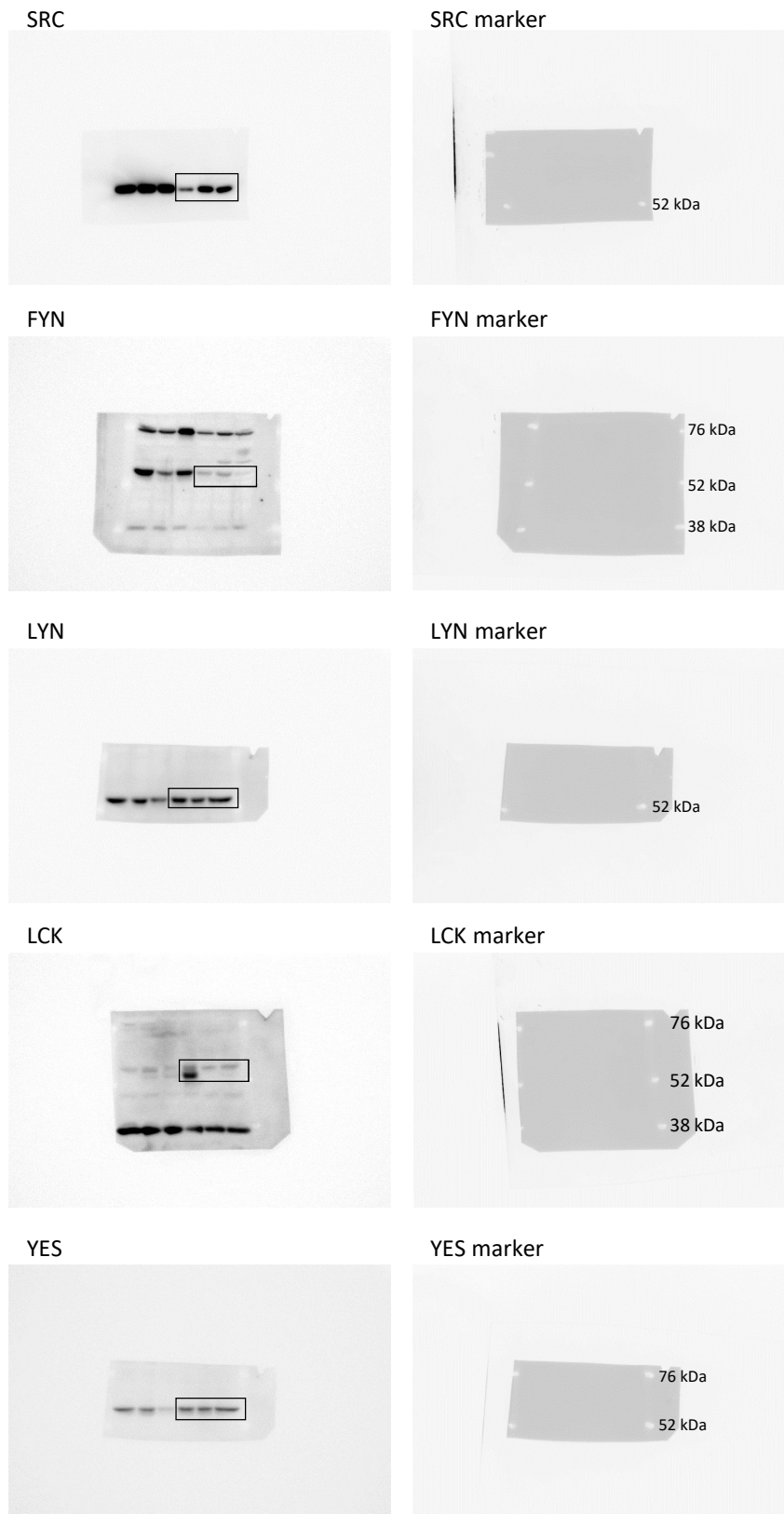


Figure 4a

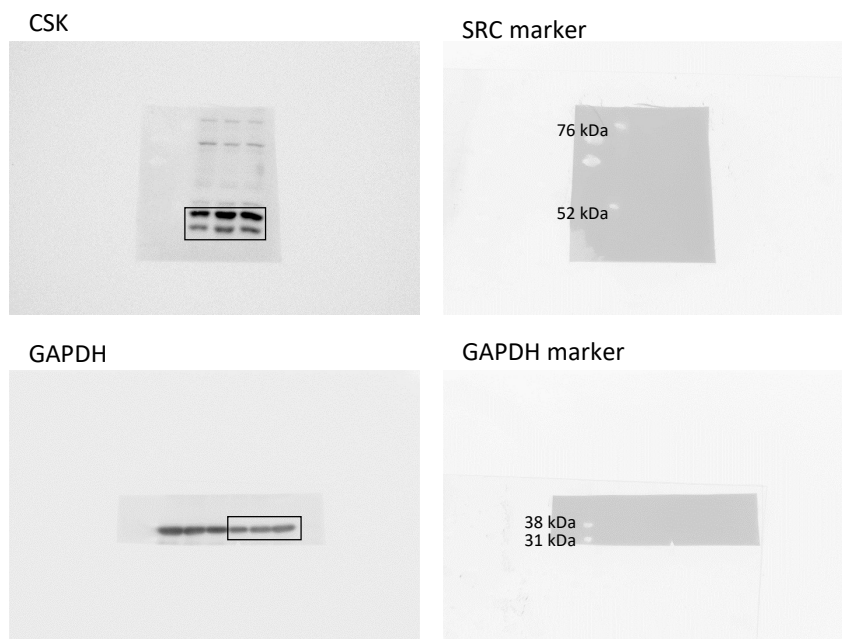


Figure 4c

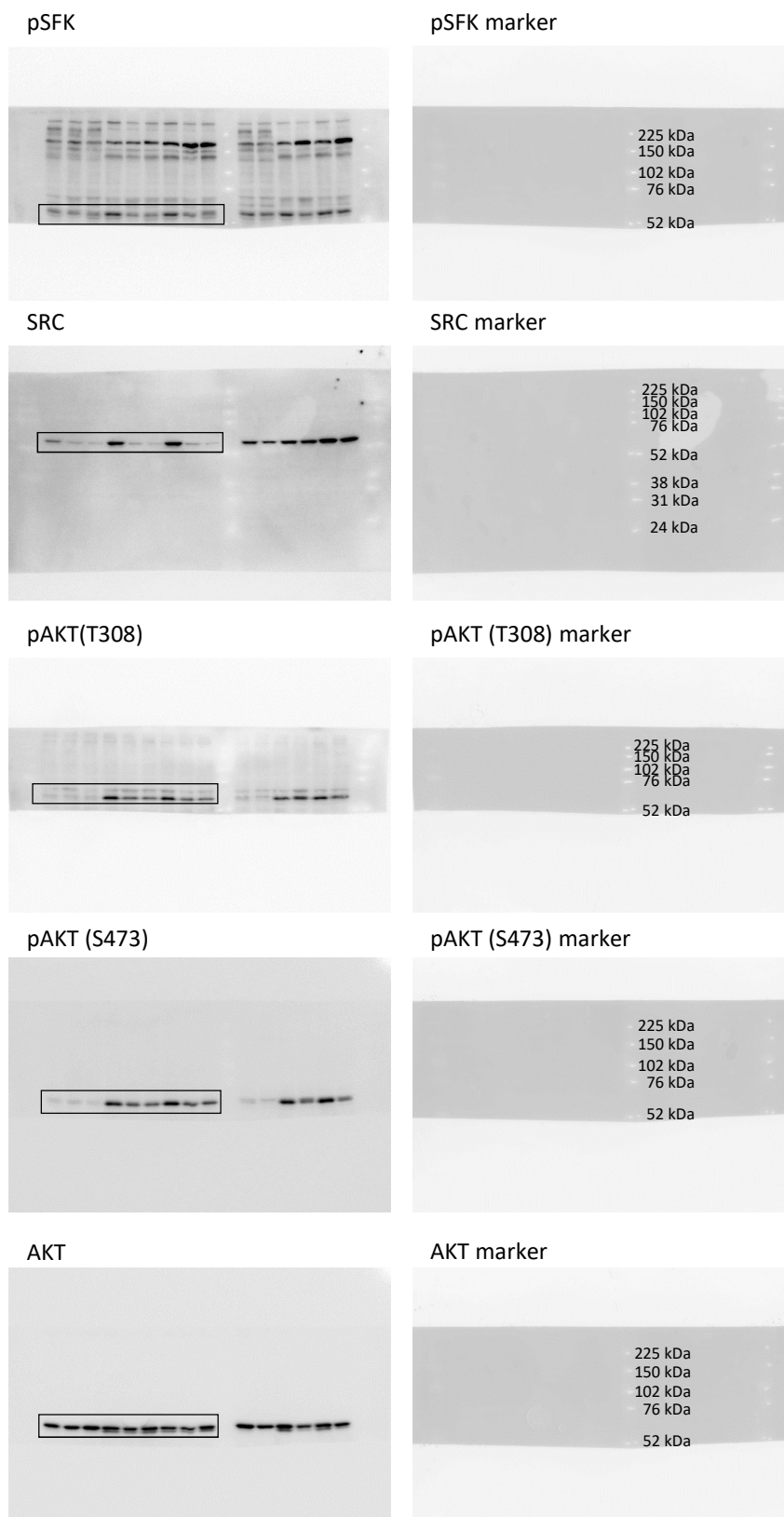


Figure 4c

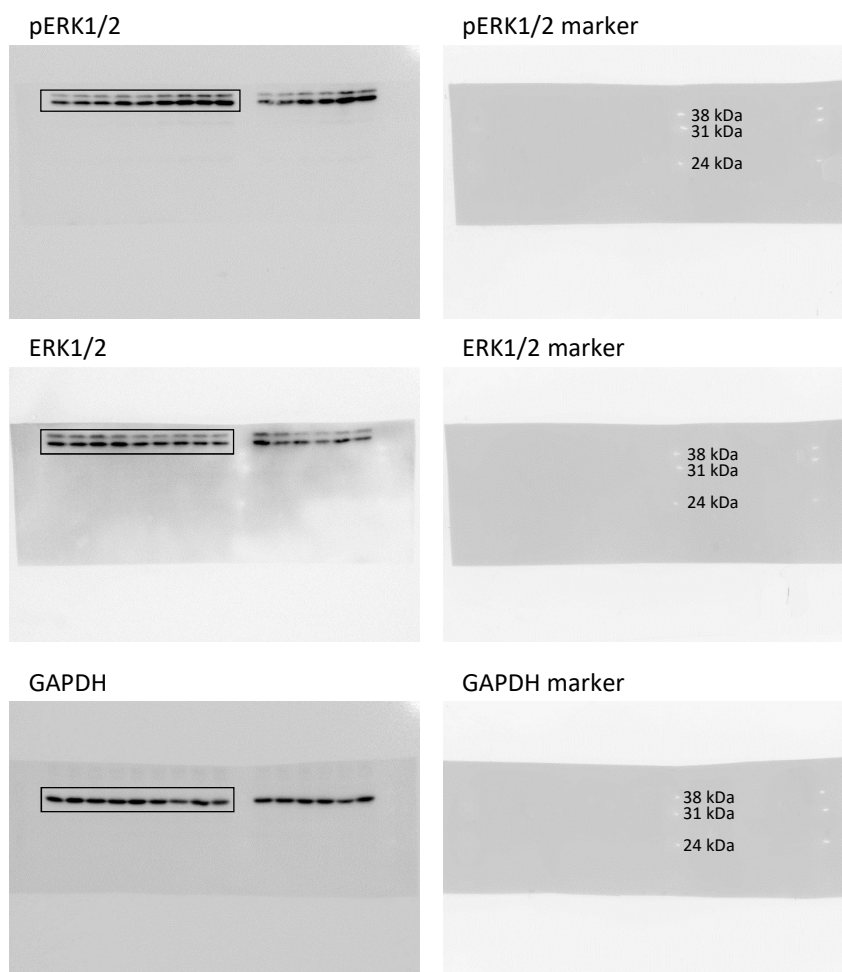


Figure 4e

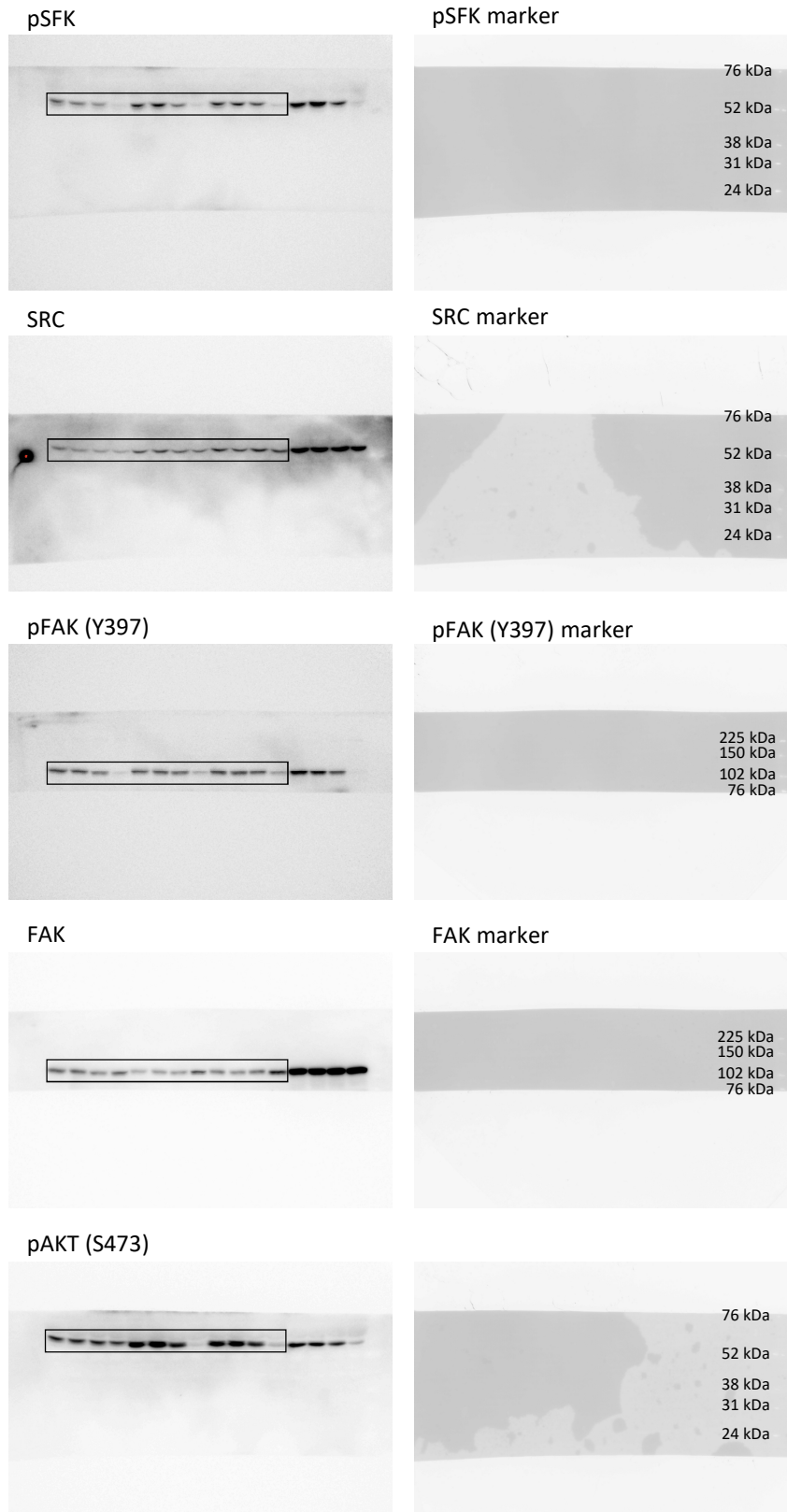


Figure 4e

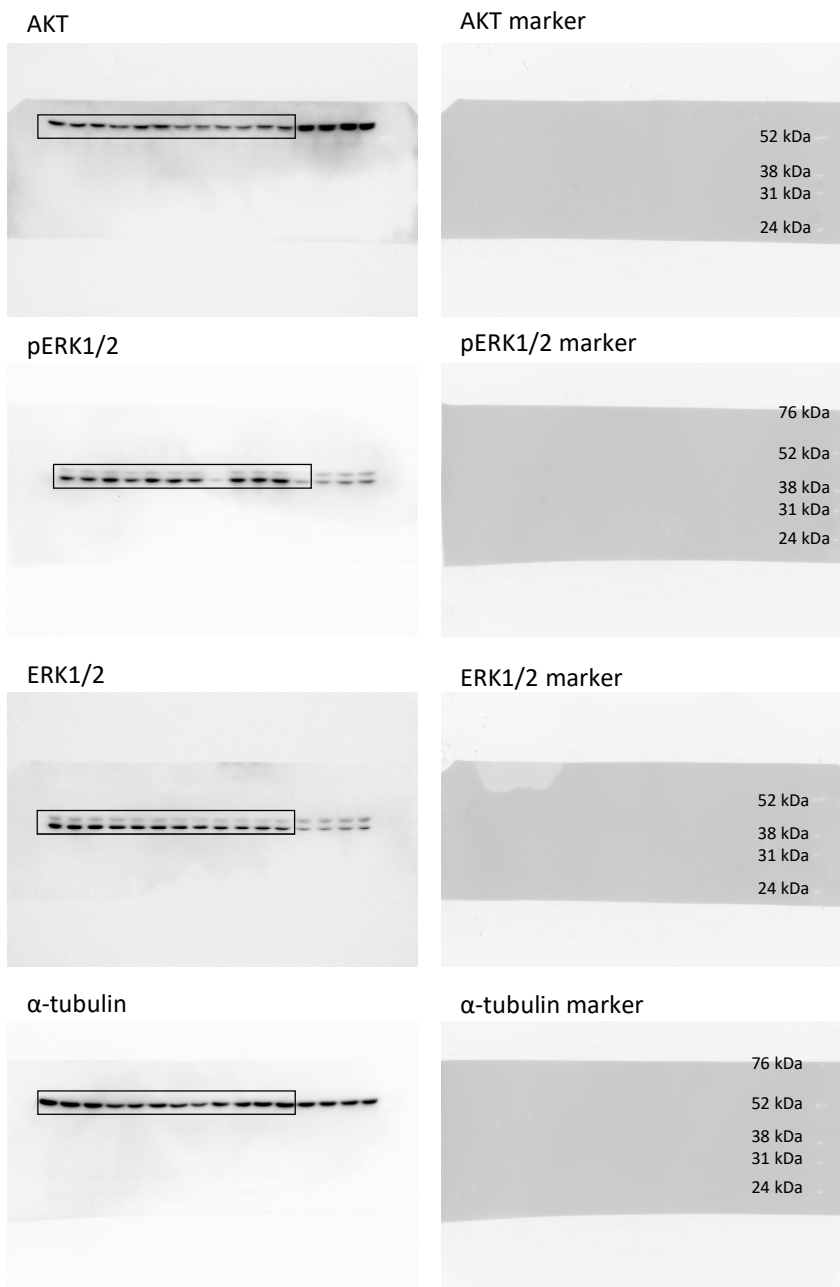


Figure 4g

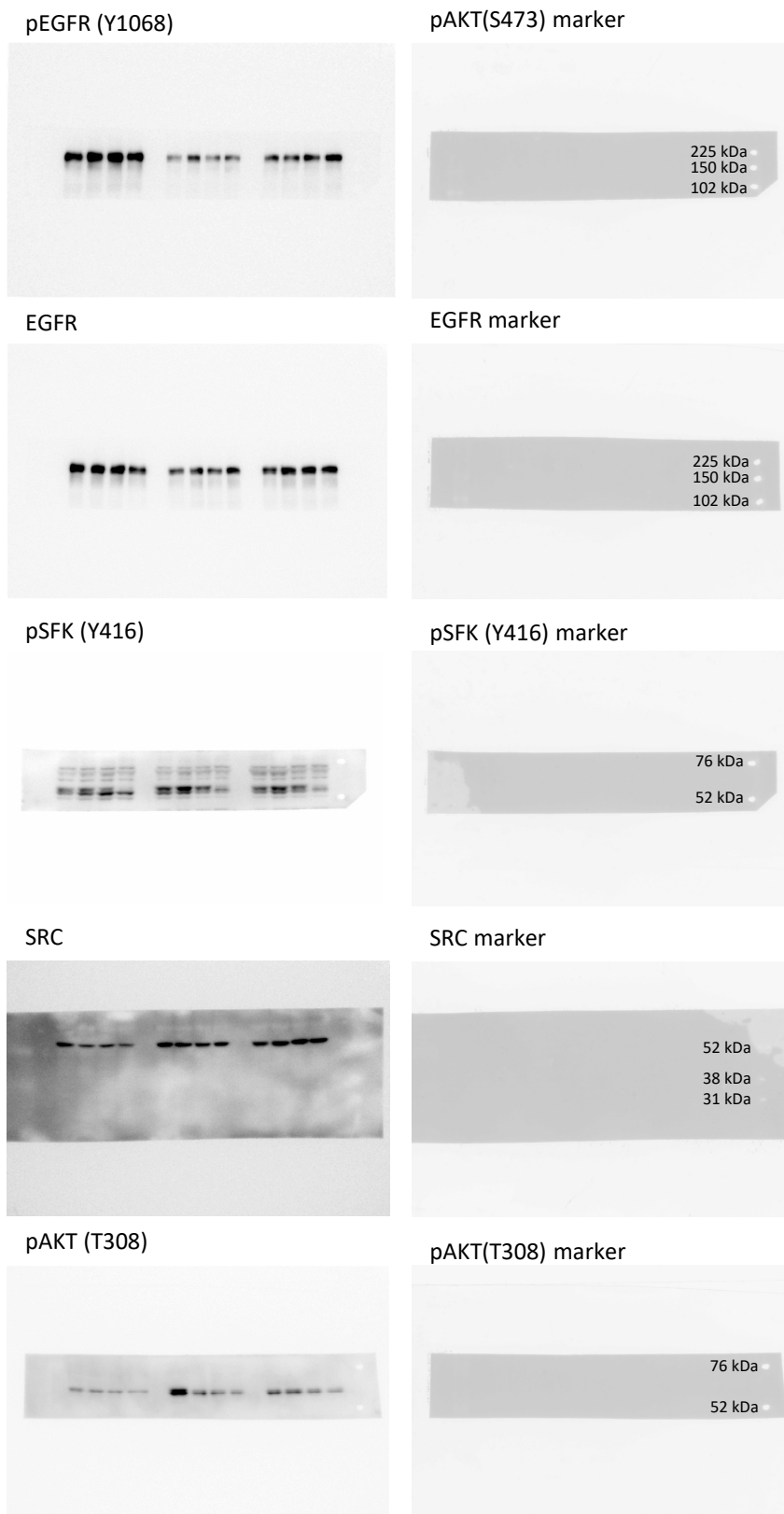


Figure 4g

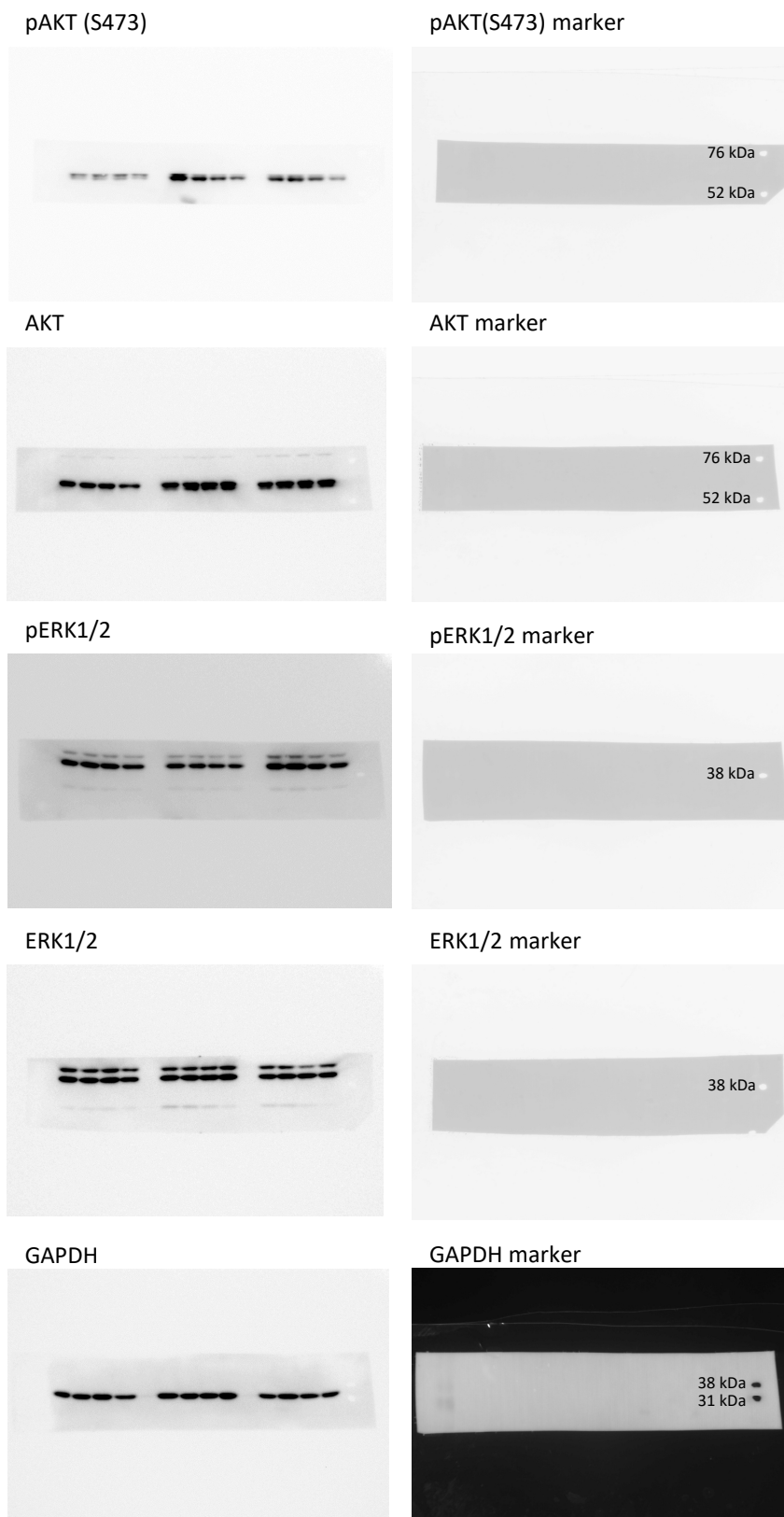


Figure 4i

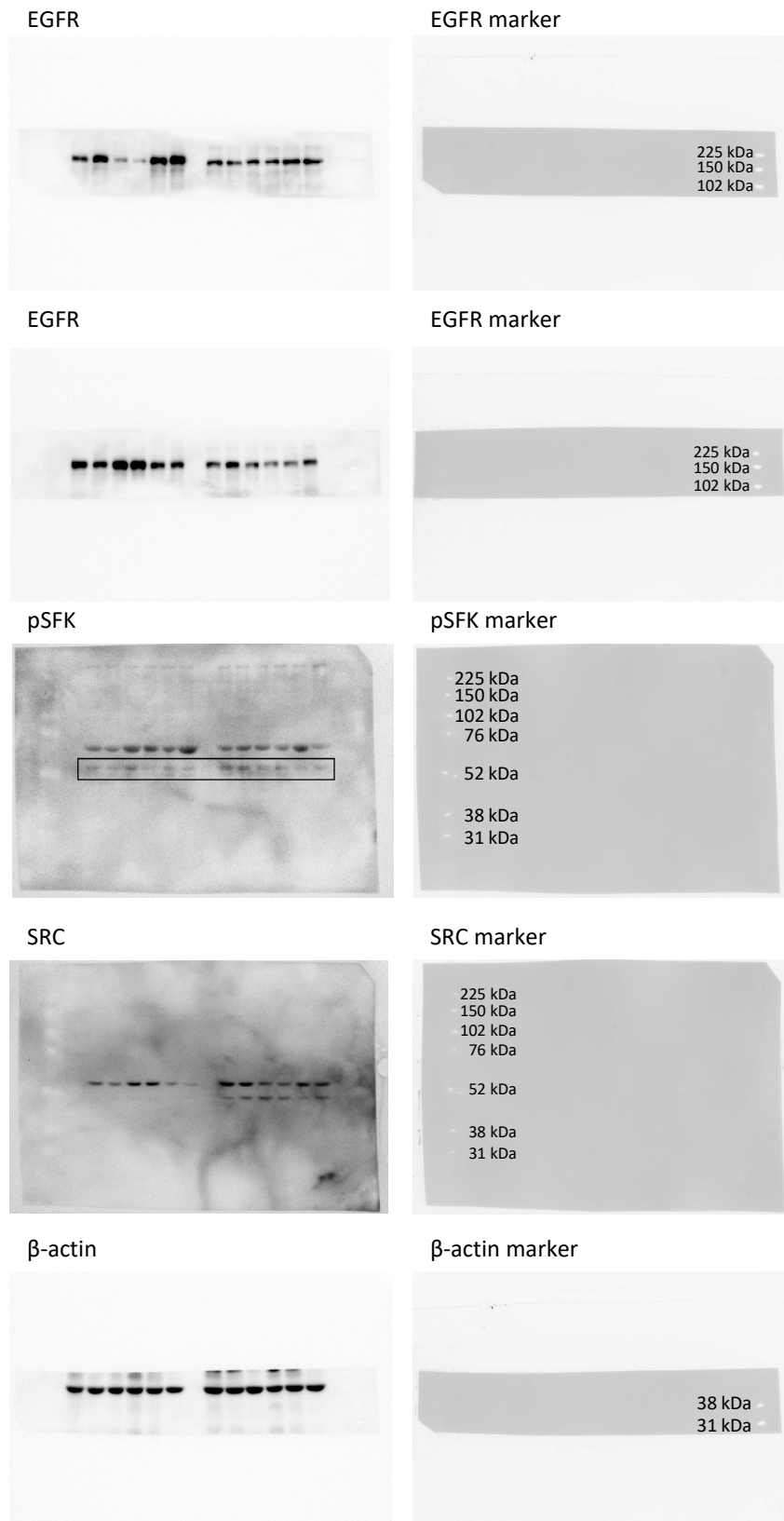


Figure 5c



Figure 5c

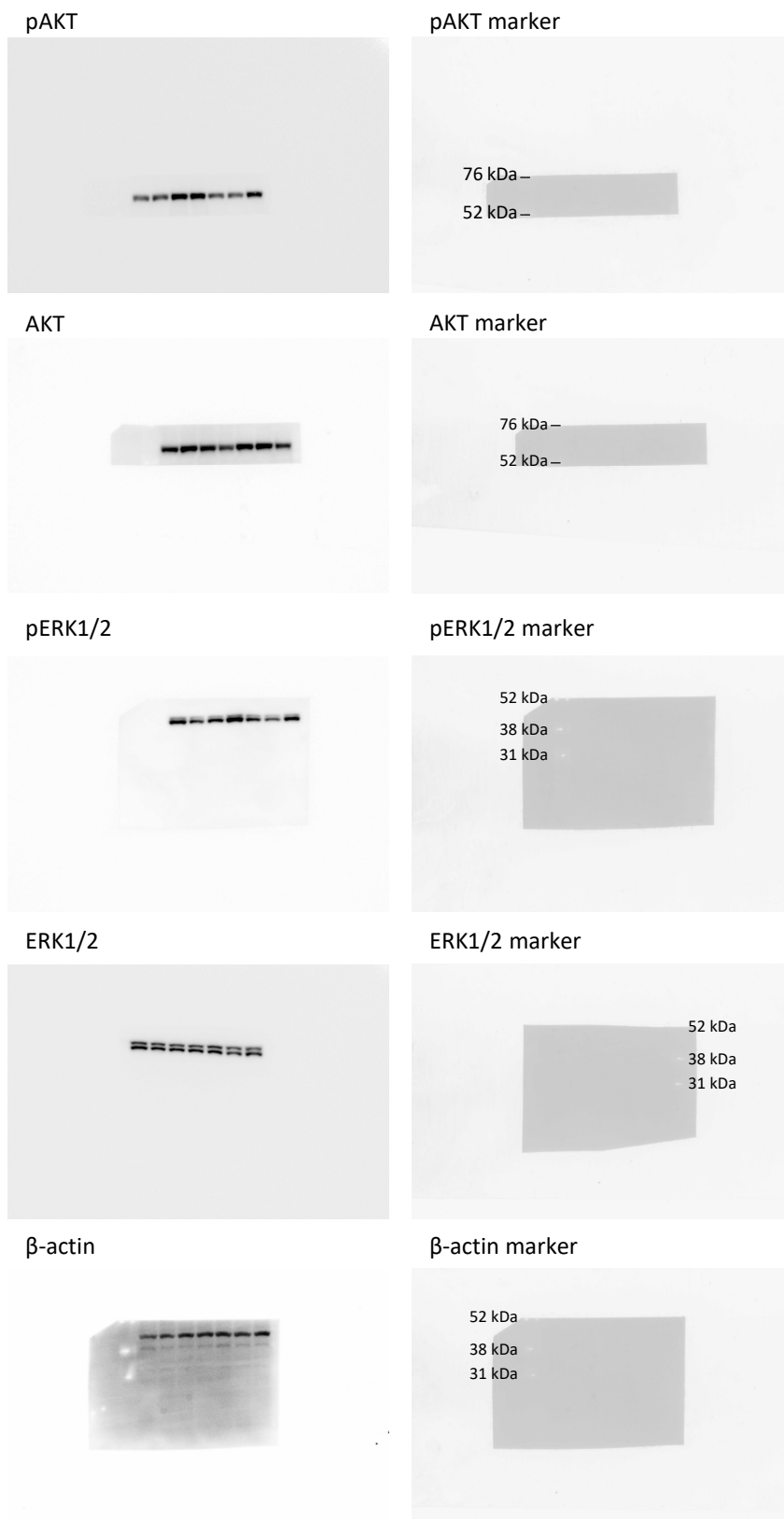


Figure S2

