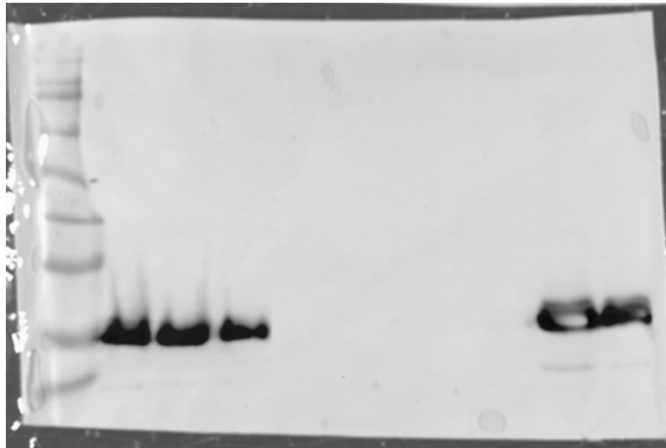


Figure 1A

Blot: Chemerin



Ponceau

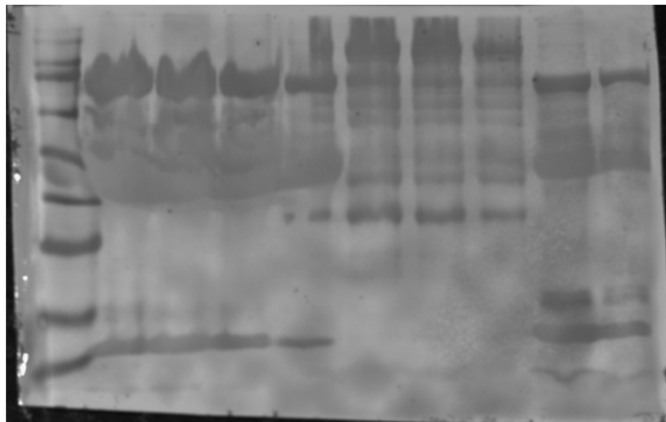


Figure 1B

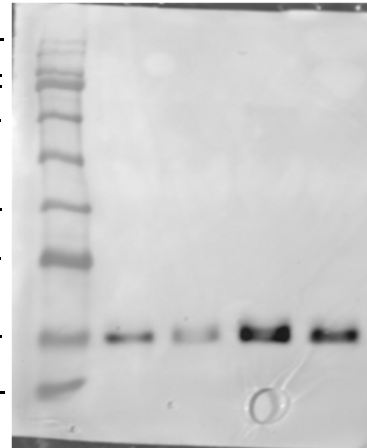
Standard molecular Weight:

Ref: BlueStar Prestained Protein Marker11



180
130
100
75
63
48
35
28
17
10

Blot: Chemerin



Ponceau

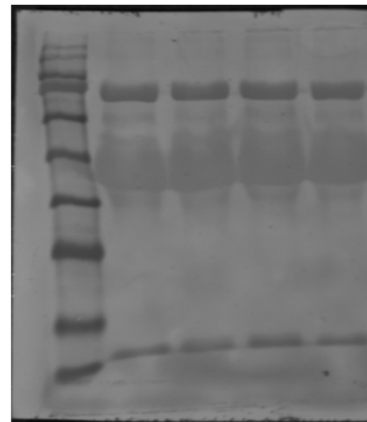


Figure 1C

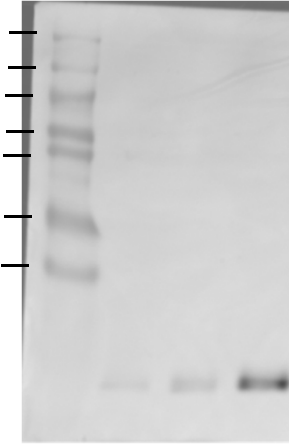
Standard molecular Weight:

Ref: SDS7B2 (Sigma Aldrich)



180
116
90
58
49
37
27

Blot: Chemerin



Ponceau

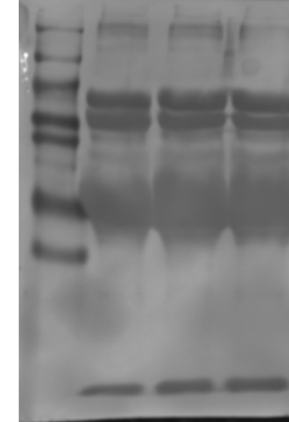
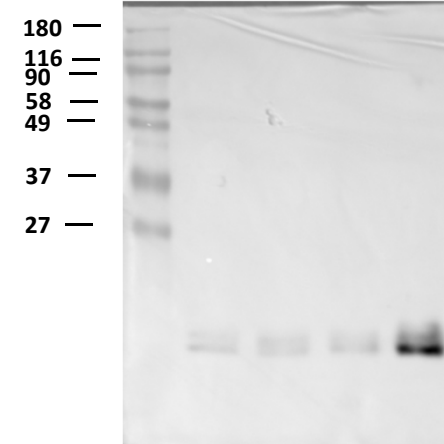


Figure 2F

Blot: Chemerin

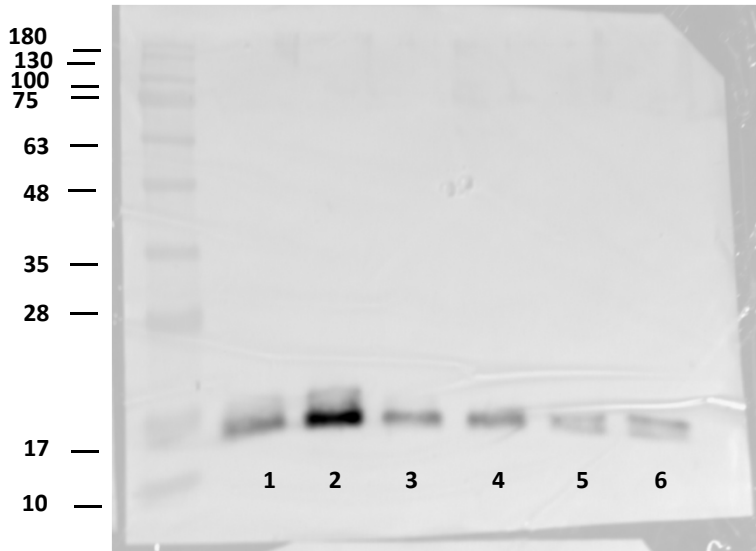


Blot: Vinculin



Figure 2C

Blot: Chemerin



1: Infundibulum; 2: Magnum; 3: Utero-vaginal junction; 4: Isthmus; 5: Shell gland; 6: Vagina

In the figure 2C in our manuscript we removed the Utero-vaginal junction

Blot: Vinculin



1: Infundibulum; 2: Magnum; 3: Utero-vaginal junction; 4: Isthmus; 5: Shell gland; 6: Vagina

In the figure 2C in our manuscript we removed the Utero-vaginal junction

Figure 3A

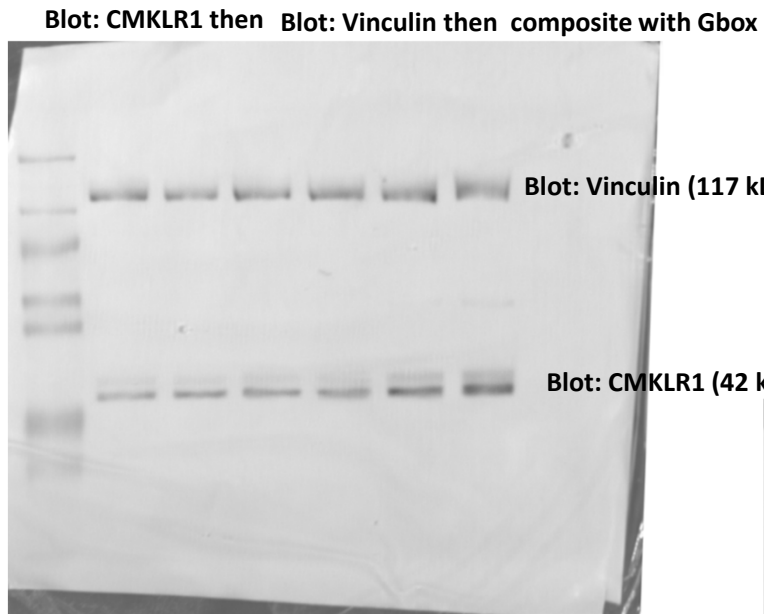


Figure 3B

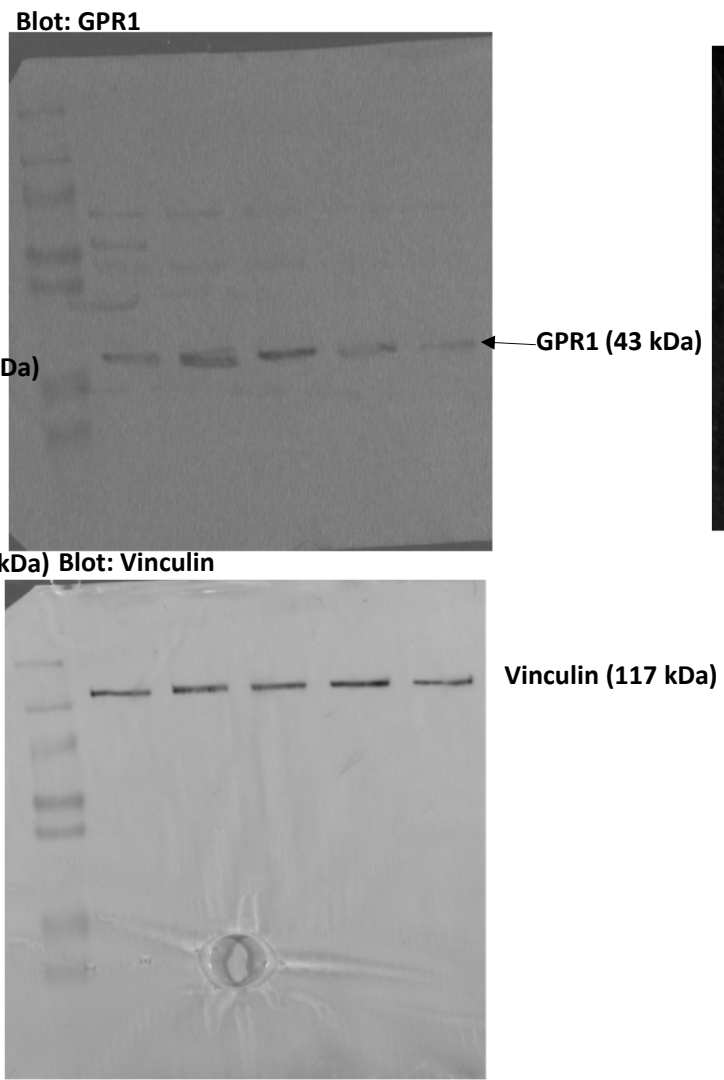


Figure 3C

This blot has been probed with another antibody (Akt) justifying a band around 56 kDa

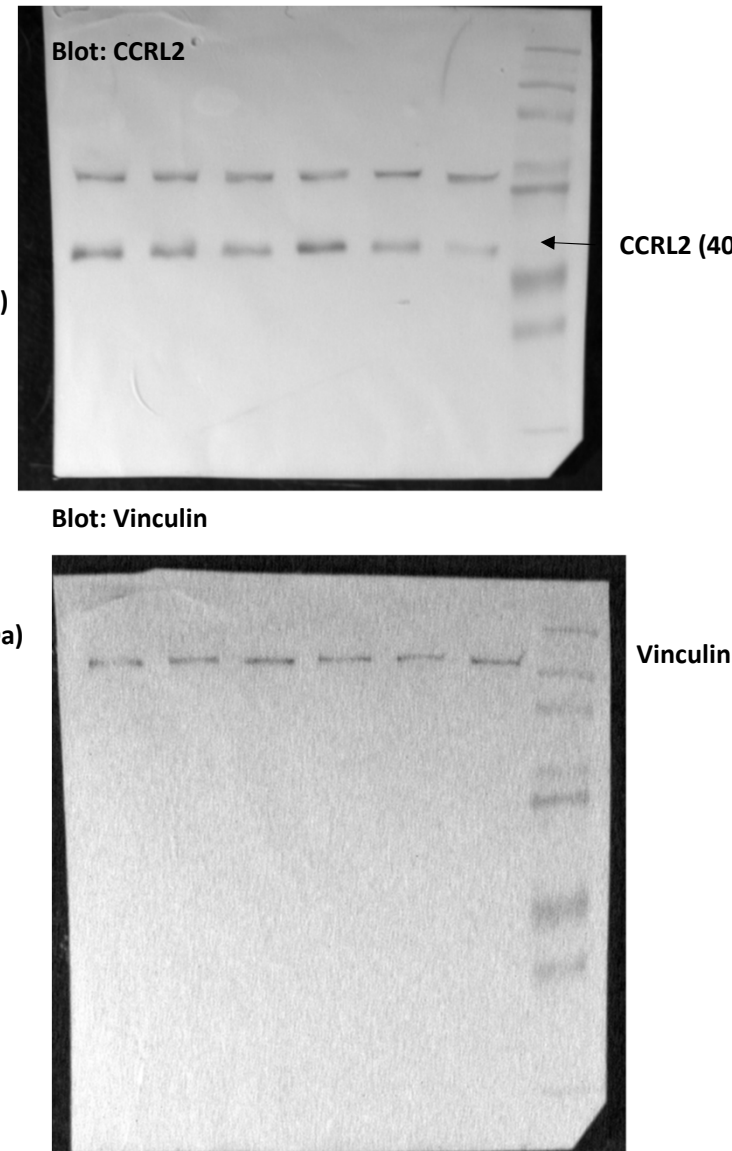
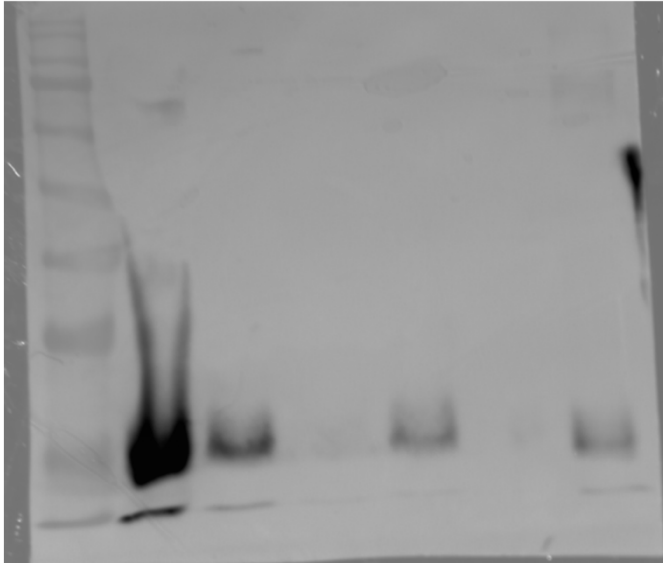


Figure 4A

Blot: Chemerin



Blot: Chemerin (blot cropped)

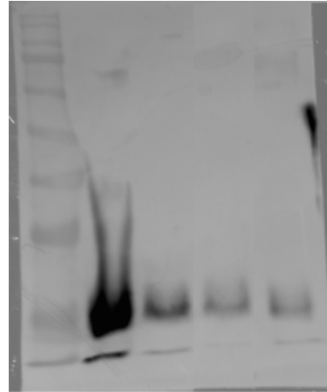


Figure 4C

Blot: Chemerin

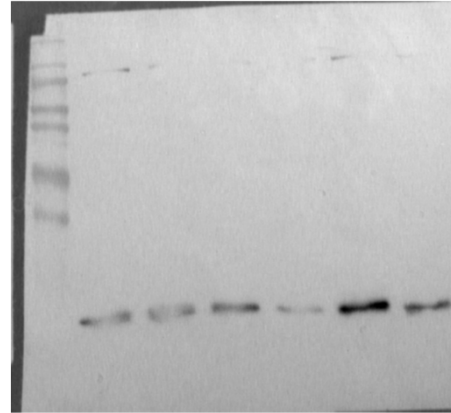
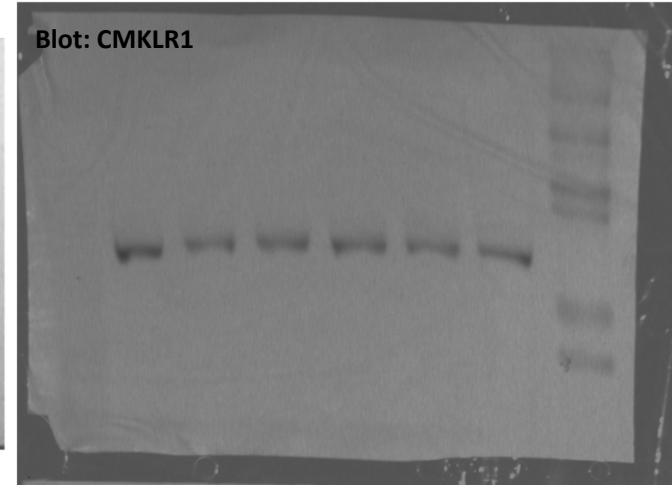
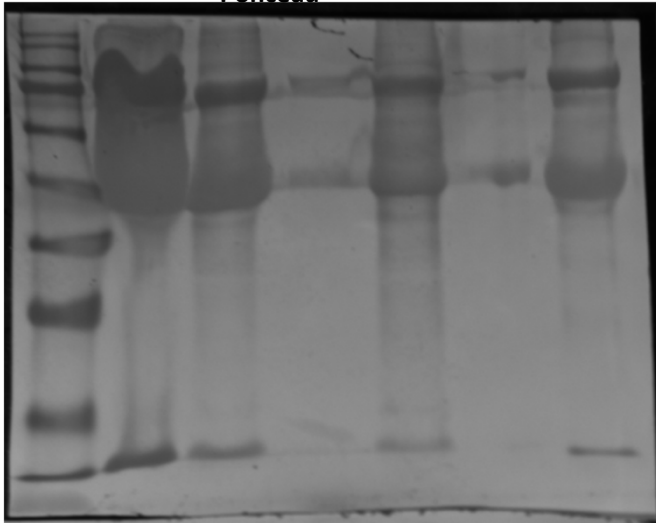


Figure 4D

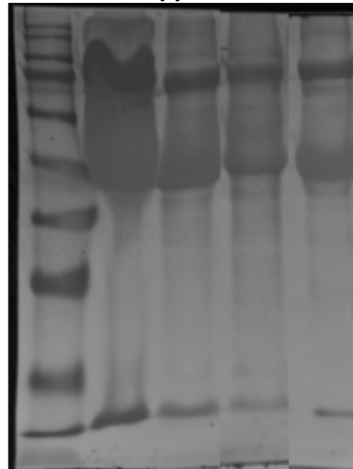
Blot: CMKLR1



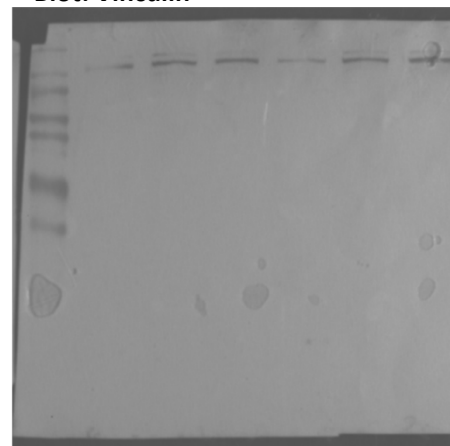
Ponceau



Ponceau cropped



Blot: Vinculin



Blot: Vinculin

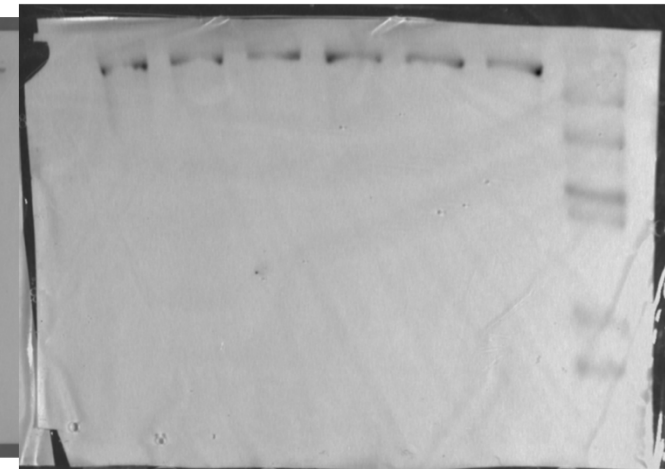
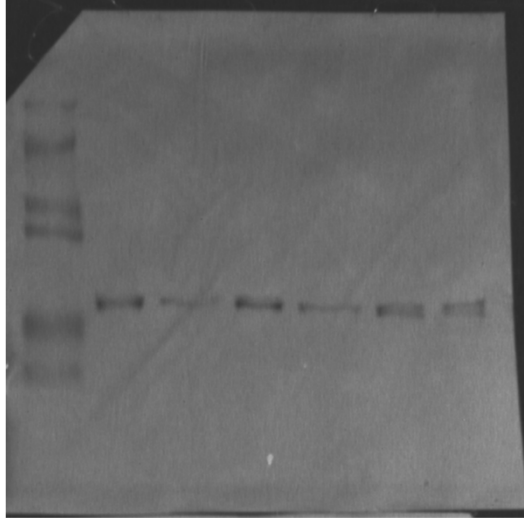


Figure 4E

Blot: GPR1



Blot: Vinculin

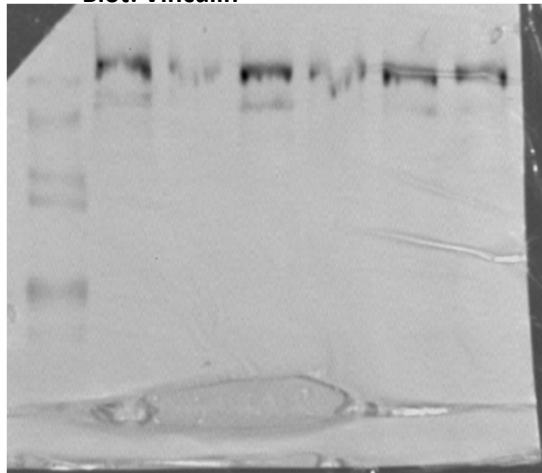
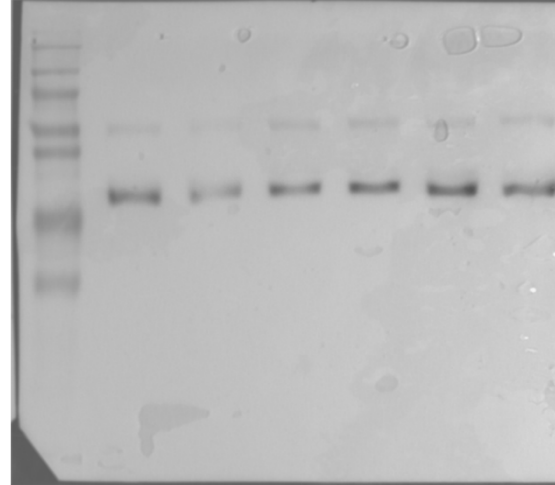
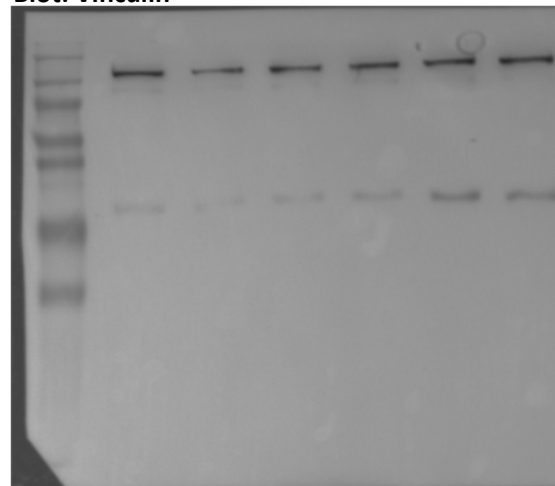


Figure 4F

Blot: CCRL2



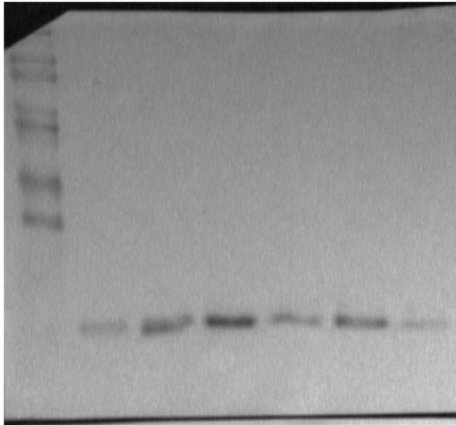
Blot: Vinculin



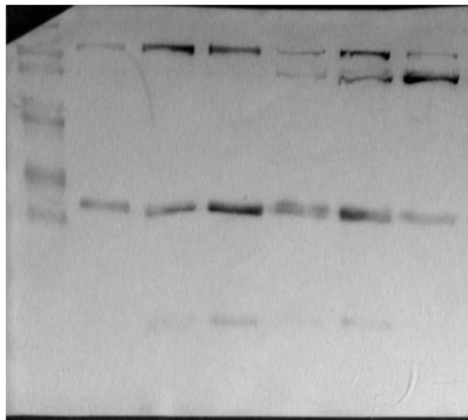
← Vinculin

Figure 5A

Blot: Chemerin



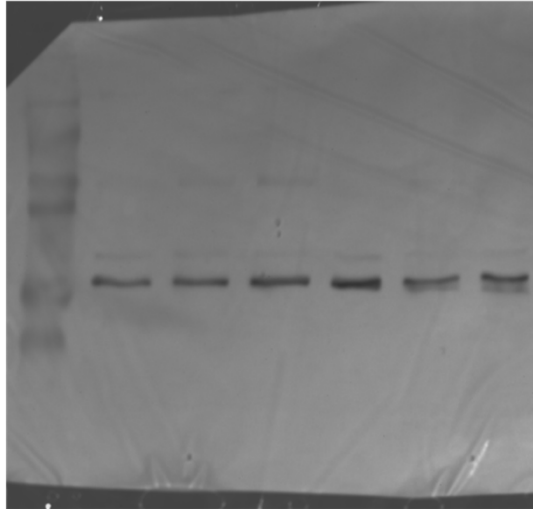
Blot: Vinculin



← Vinculin

Figure 5B

Blot: CMKLR1



Blot: Vinculin

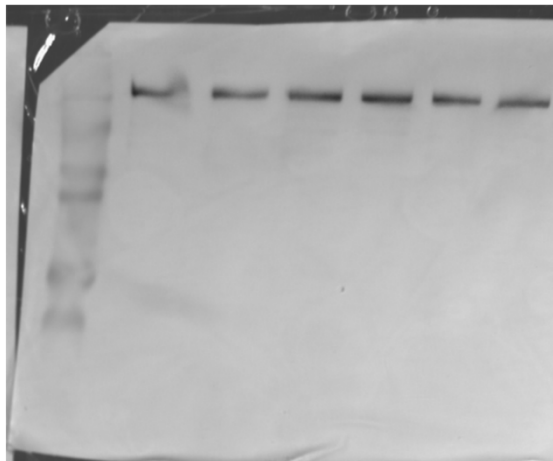
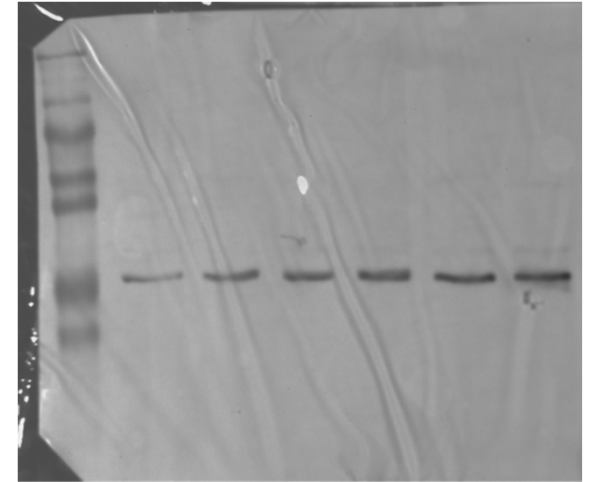


Figure 5C

Blot: GPR1



Blot: Vinculin

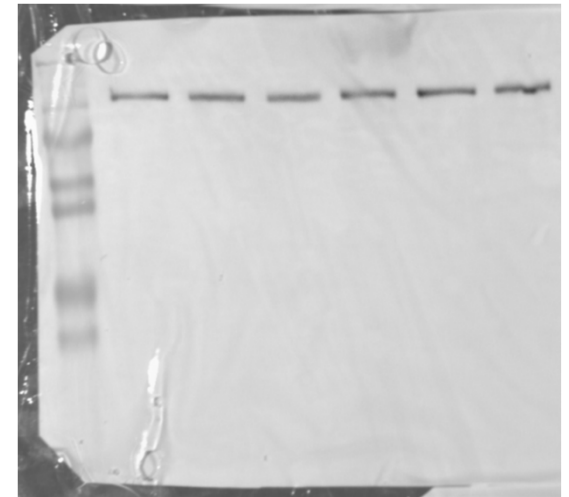
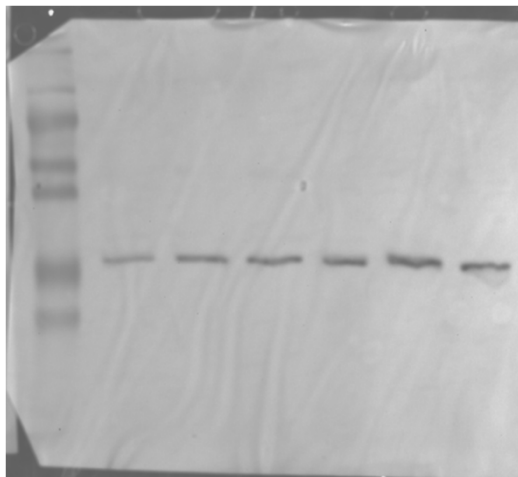


Figure 5D

Blot: CCRL2



Blot: Vinculin

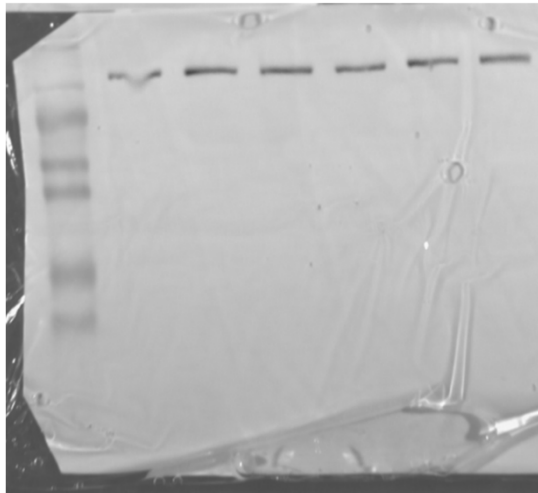
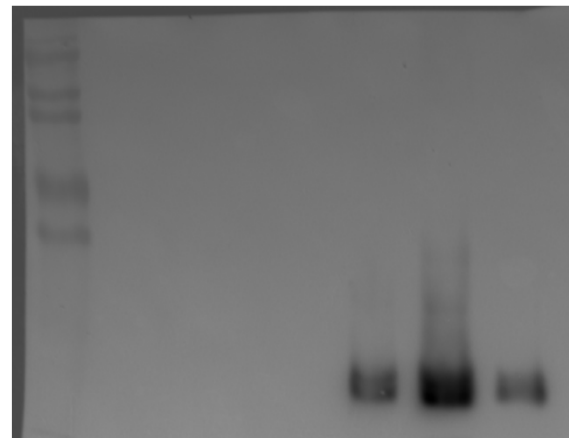


Figure 5E

Blot: Chemerin



Blot: Ponceau

