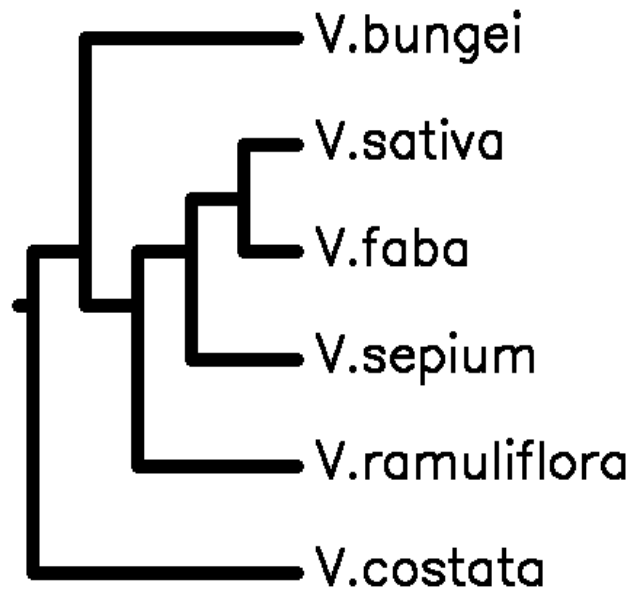


A



B

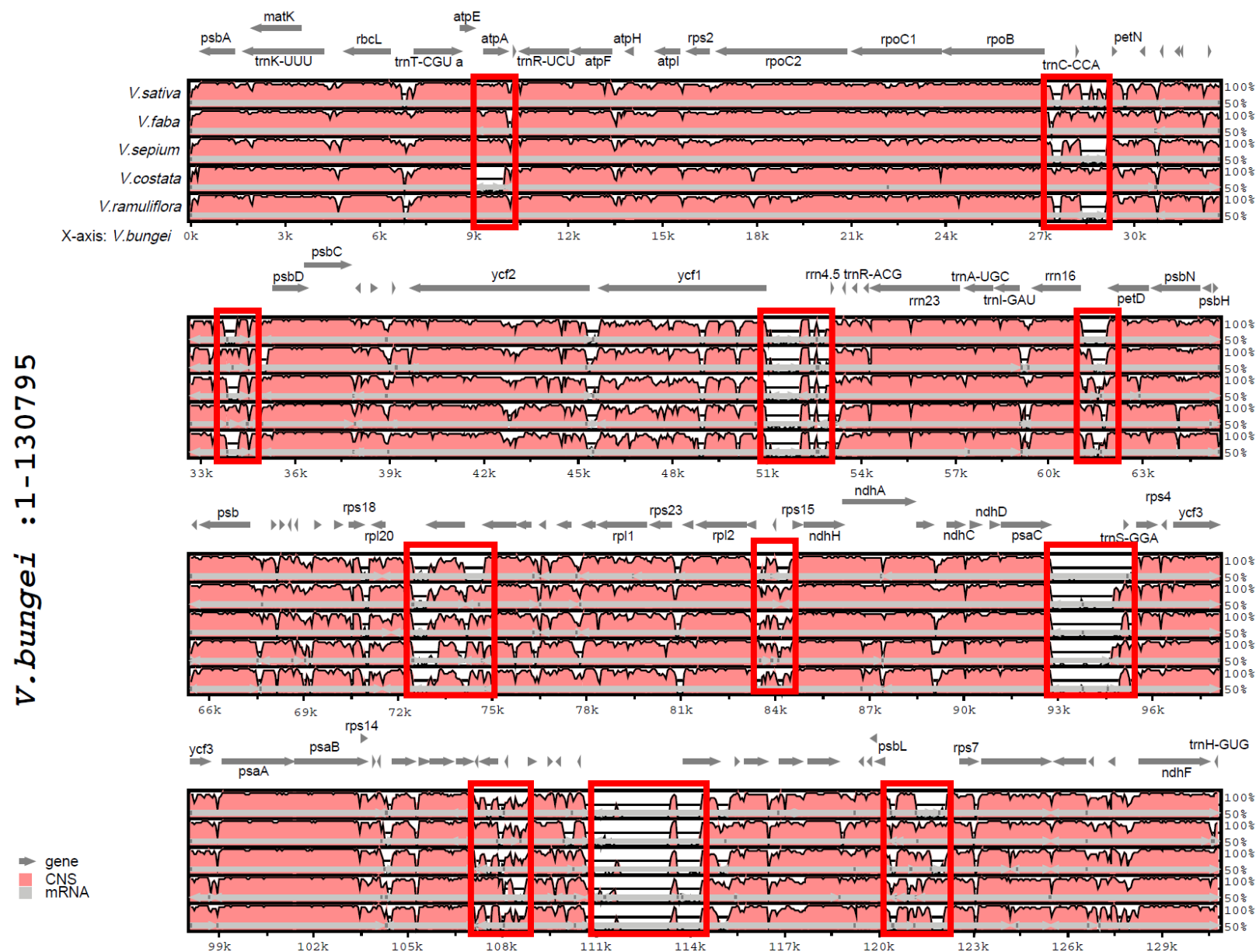


Fig. S3. Comparison of *Vicia* six species chloroplast genome. (A) phylogenetic tree based on the sequence alignment of the chloroplast genome of 6 *Vicia* species showed that *V. bungei* is far from reported other *Vicia* species. (B) Multiple alignments of chloroplast genome sequences of six *Vicia* species, each with that of *V. bungei*. Red blocks: major variant regions in chloroplast genome