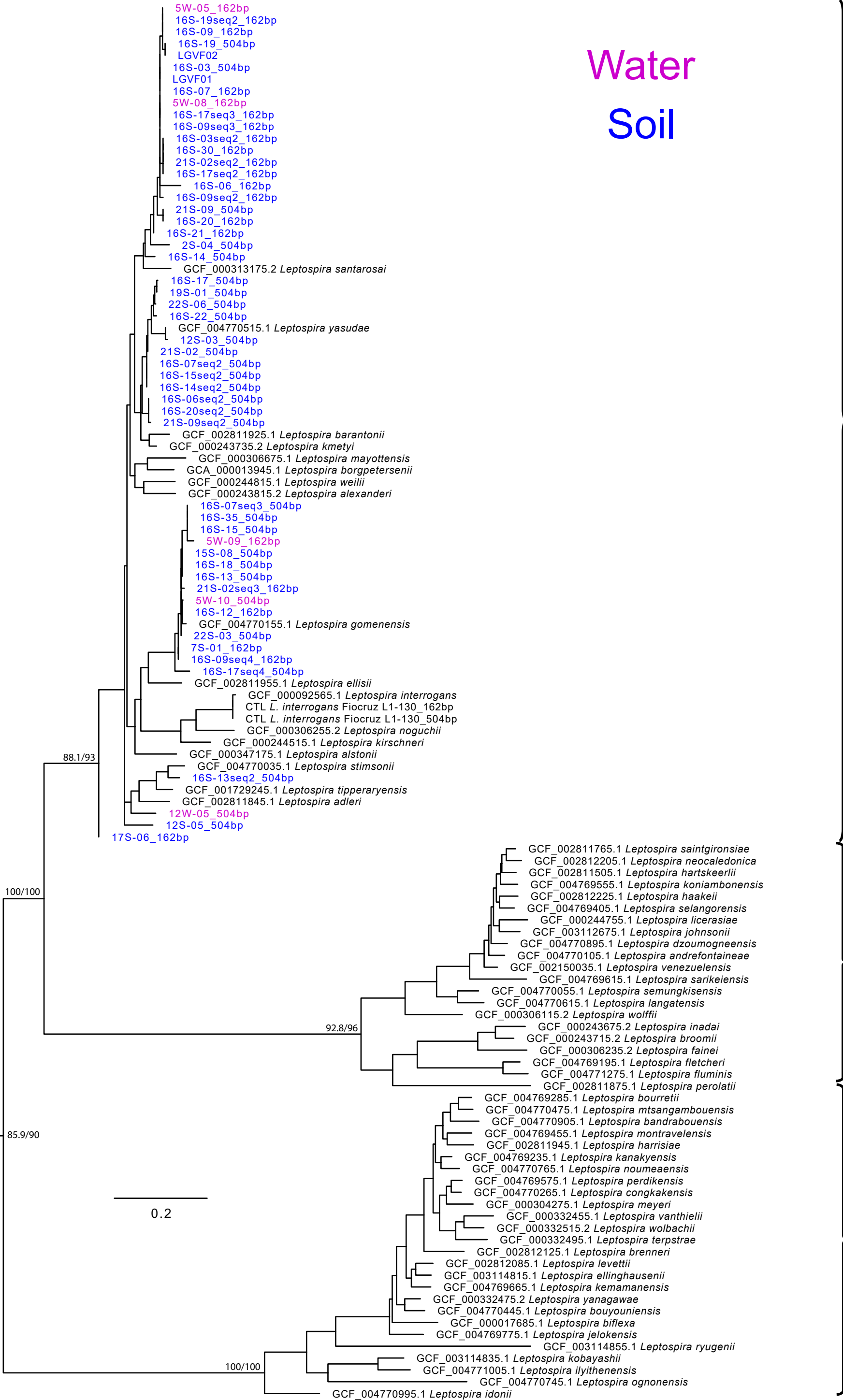


Water
Soil



Pathogenic

Intermediate

Saprophytic

0.2

88.1/93

100/100

85.9/90

92.8/96

100/100

- 5W-05_162bp
- 16S-19seq2_162bp
- 16S-09_162bp
- 16S-19_504bp
- LGVF02
- 16S-03_504bp
- LGVF01
- 16S-07_162bp
- 5W-08_162bp
- 16S-17seq3_162bp
- 16S-09seq3_162bp
- 16S-03seq2_162bp
- 16S-30_162bp
- 21S-02seq2_162bp
- 16S-17seq2_162bp
- 16S-06_162bp
- 16S-09seq2_162bp
- 21S-09_504bp
- 16S-20_162bp
- 16S-21_162bp
- 2S-04_504bp
- 16S-14_504bp
- GCF_000313175.2 *Leptospira santarosai*
- 16S-17_504bp
- 19S-01_504bp
- 22S-06_504bp
- 16S-22_504bp
- GCF_004770515.1 *Leptospira yasudae*
- 12S-03_504bp
- 21S-02_504bp
- 16S-07seq2_504bp
- 16S-15seq2_504bp
- 16S-14seq2_504bp
- 16S-06seq2_504bp
- 16S-20seq2_504bp
- 21S-09seq2_504bp
- GCF_002811925.1 *Leptospira barantonii*
- GCF_000243735.2 *Leptospira kmetyi*
- GCF_000306675.1 *Leptospira mayottensis*
- GCA_000013945.1 *Leptospira borgpetersenii*
- GCF_000244815.1 *Leptospira weilii*
- GCF_000243815.2 *Leptospira alexanderi*
- 16S-07seq3_504bp
- 16S-35_504bp
- 16S-15_504bp
- 5W-09_162bp
- 15S-08_504bp
- 16S-18_504bp
- 16S-13_504bp
- 21S-02seq3_162bp
- 5W-10_504bp
- 16S-12_162bp
- GCF_004770155.1 *Leptospira gomenensis*
- 22S-03_504bp
- 7S-01_162bp
- 16S-09seq4_162bp
- 16S-17seq4_504bp
- GCF_002811955.1 *Leptospira ellisii*
- GCF_000092565.1 *Leptospira interrogans*
- CTL *L. interrogans* Fiocruz L1-130_162bp
- CTL *L. interrogans* Fiocruz L1-130_504bp
- GCF_000306255.2 *Leptospira noguchii*
- GCF_000244515.1 *Leptospira kirschneri*
- GCF_000347175.1 *Leptospira alstonii*
- GCF_004770035.1 *Leptospira stimsonii*
- 16S-13seq2_504bp
- GCF_001729245.1 *Leptospira tipperaryensis*
- GCF_002811845.1 *Leptospira adleri*
- 12W-05_504bp
- 12S-05_504bp
- 17S-06_162bp

- GCF_002811765.1 *Leptospira saintgironsiae*
- GCF_002812205.1 *Leptospira neocaledonica*
- GCF_002811505.1 *Leptospira hartskeerlii*
- GCF_004769555.1 *Leptospira koniambonensis*
- GCF_002812225.1 *Leptospira haakeii*
- GCF_004769405.1 *Leptospira selangorensis*
- GCF_000244755.1 *Leptospira licerasiae*
- GCF_003112675.1 *Leptospira johnsonii*
- GCF_004770895.1 *Leptospira dzoumogneensis*
- GCF_004770105.1 *Leptospira andrefontaineae*
- GCF_002150035.1 *Leptospira venezuelensis*
- GCF_004769615.1 *Leptospira sarikeiensis*
- GCF_004770055.1 *Leptospira semungkisensis*
- GCF_004770615.1 *Leptospira langatensis*
- GCF_000306115.2 *Leptospira wolffii*
- GCF_000243675.2 *Leptospira inadai*
- GCF_000243715.2 *Leptospira broomii*
- GCF_000306235.2 *Leptospira fainei*
- GCF_004769195.1 *Leptospira fletcheri*
- GCF_004771275.1 *Leptospira fluminis*
- GCF_002811875.1 *Leptospira perolatii*
- GCF_004769285.1 *Leptospira bourretii*
- GCF_004770475.1 *Leptospira mtsangambuensis*
- GCF_004770905.1 *Leptospira bandrabouensis*
- GCF_004769455.1 *Leptospira montravelensis*
- GCF_002811945.1 *Leptospira harrisiae*
- GCF_004769235.1 *Leptospira kanakyensis*
- GCF_004770765.1 *Leptospira noumeaensis*
- GCF_004769575.1 *Leptospira perdikensis*
- GCF_004770265.1 *Leptospira congkakensis*
- GCF_000304275.1 *Leptospira meyeri*
- GCF_000332455.1 *Leptospira vanthielii*
- GCF_000332515.2 *Leptospira wolbachii*
- GCF_000332495.1 *Leptospira terpstrae*
- GCF_002812125.1 *Leptospira brenneri*
- GCF_002812085.1 *Leptospira levettii*
- GCF_003114815.1 *Leptospira ellinghausenii*
- GCF_004769665.1 *Leptospira kemamanensis*
- GCF_000332475.2 *Leptospira yanagawae*
- GCF_004770445.1 *Leptospira bouyouniensis*
- GCF_000017685.1 *Leptospira biflexa*
- GCF_004769775.1 *Leptospira jelokensis*
- GCF_003114855.1 *Leptospira ryugenii*
- GCF_003114835.1 *Leptospira kobayashii*
- GCF_004771005.1 *Leptospira ilyithenensis*
- GCF_004770745.1 *Leptospira ognonensis*
- GCF_004770995.1 *Leptospira idonii*