

Supplementary Figure 1

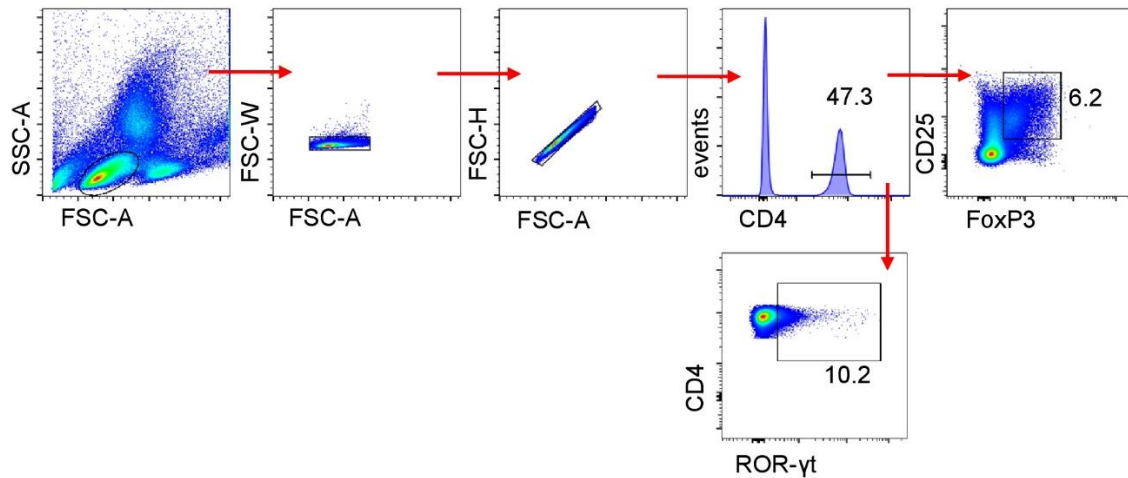


Figure S1. Gating strategy. Representative FACS profile showing the gating strategy for the analysis of Tregs and TH17 cells. Peripheral blood mononuclear cells (1×10^6) were stained with anti-CD4 and anti-CD25 IgG antibodies for 20 min at room temperature. Intracellular staining using anti-FOXP3 and anti-ROR- γ t was performed on fixed and permeabilized cells. Data were acquired using a FACSCanto II (Becton Dickinson). FSC-A vs SSC-A allowed the preliminary identification of lymphocytes. Then, we selected singlets using FSC-A versus FSC-W and/or FSC-H parameters and CD4⁺ T cells were selected from the singlet population using the anti-CD4 antibody. Tregs were defined as CD4⁺CD25⁺FoxP3⁺. TH17 cells were defined as CD4⁺ROR- γ t⁺. A representative experiment is shown.