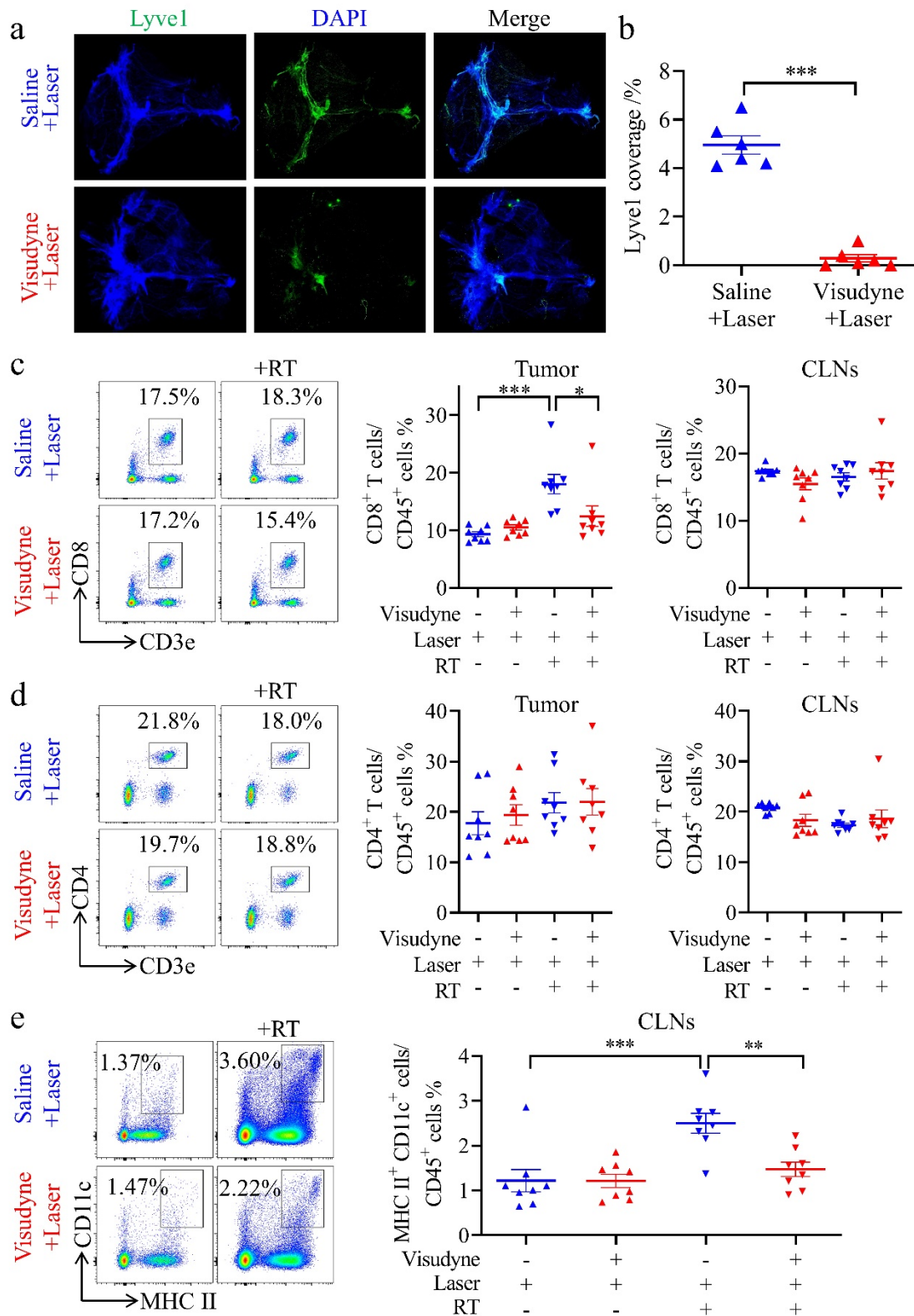


Supplementary information, Figure S4



Supplementary information, Figure S4. Establishment of MLV-defective mouse model by Visudyne with laser. a, Lyve1 staining of MLVs in mice treated with laser, with or without Visudyne. b, Percentage area of Lyve1. c–d, Representative flow

cytometry plots of CD8⁺ T cells (c), and CD4⁺ T cells (d) in CLNs (left) and quantification (right) in tumors and CLNs from the above groups as percentages of overall CD45⁺ cells on day 22 after inoculation (n = 8). e, Representative flow cytometry plots and quantification of CD11c⁺ MHCII⁺ cells in CLNs from the above groups as percentages of overall CD45⁺ cells on day 22 after inoculation (n = 8). Data are presented as means ± SEM. *P <0.05, **P <0.01, ***P <0.001; Student's t test (b), one-way ANOVA (c–e). Data are from at least two (a, b) or three (c–e) independent experiments.