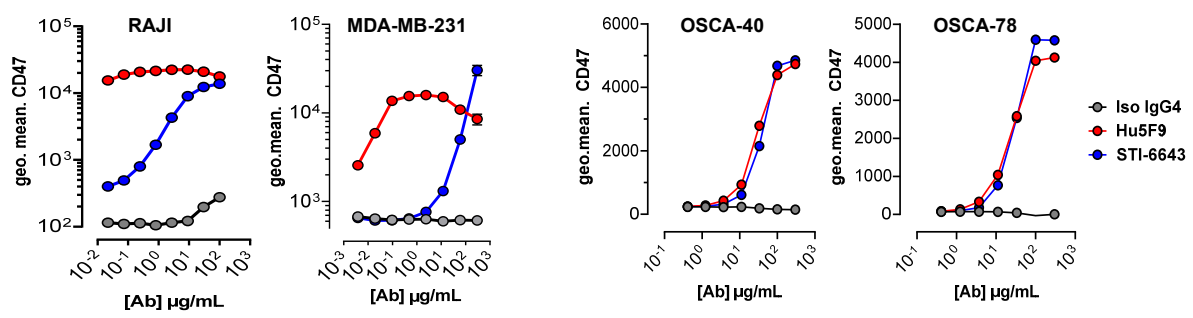


Supplementary Figure 1

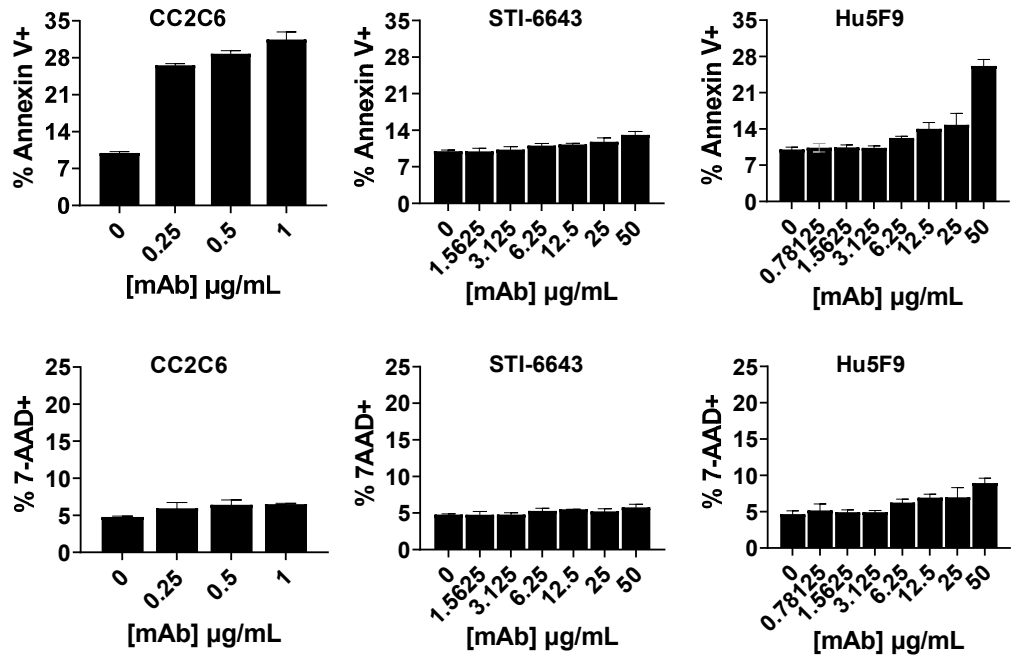
a



EC50 values (µg/mL)	Isotype IgG4	STI-6643	Hu5F9
RAJI	NM	6.638	NM
MDA-MB-231	NM	NM	NM
OSCA-40	NM	34.9	26.5
OSCA-78	NM	27.6	22.7

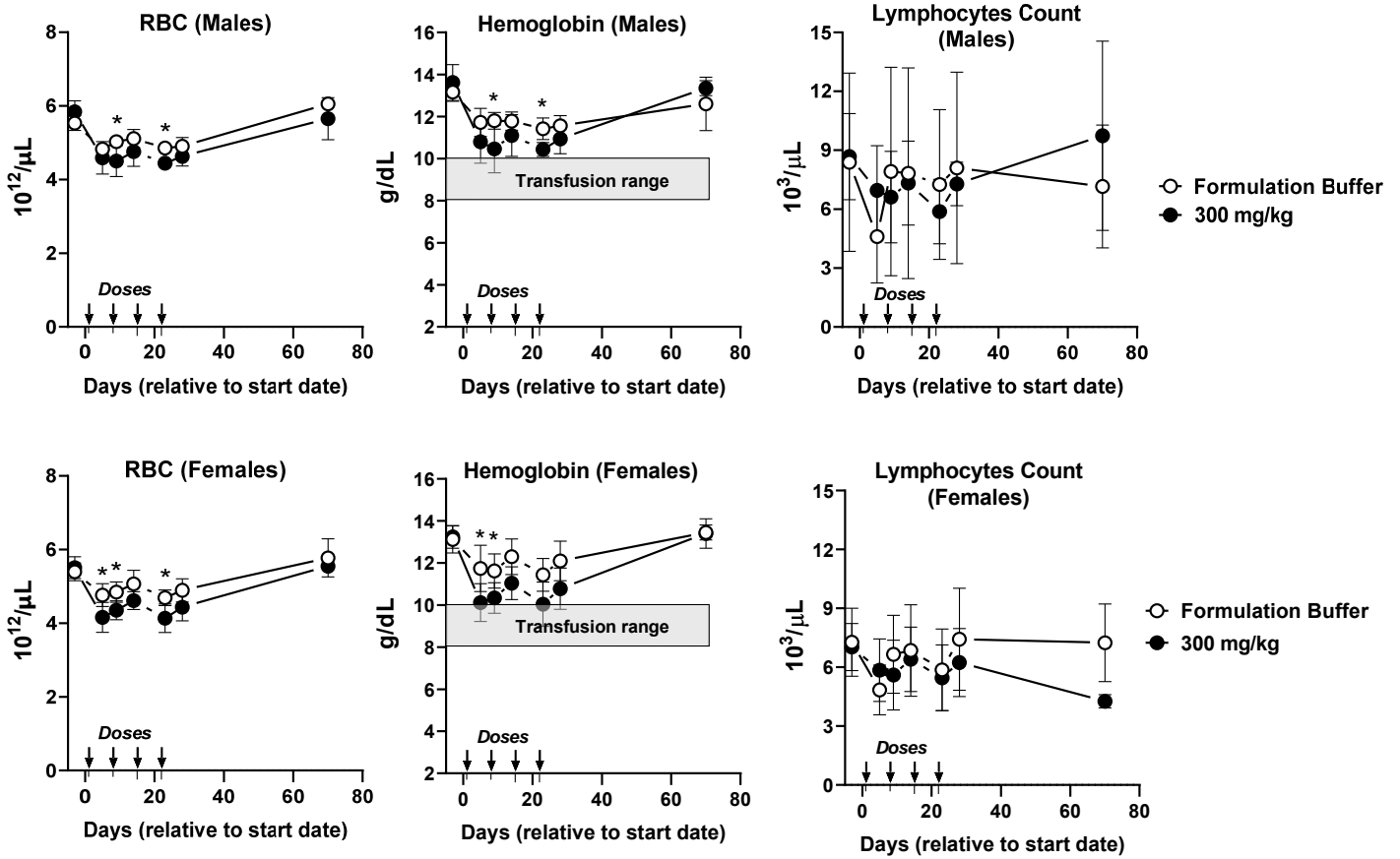
NM=Not measurable (no full dose-response curve to accurately calculate EC50)

b

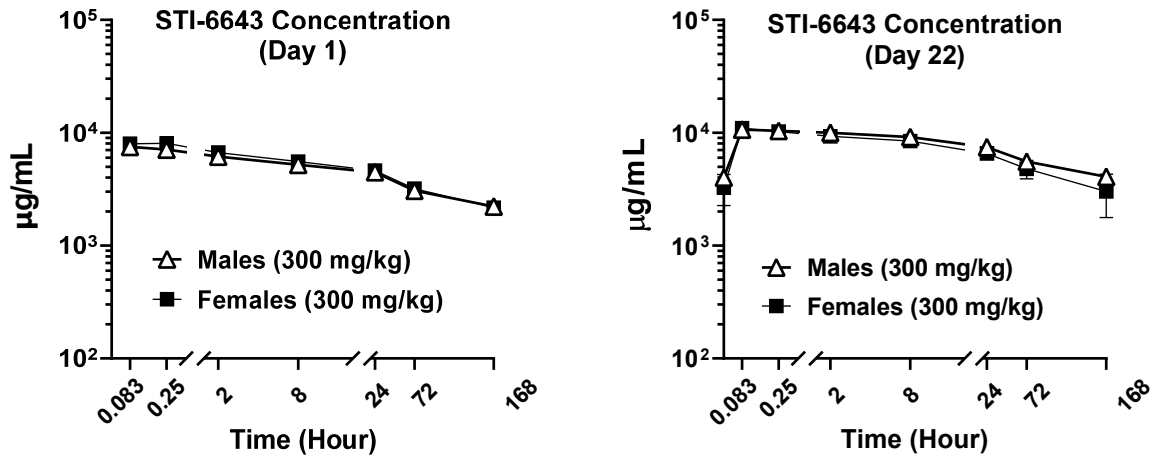


Supplementary Figure 2

a



b

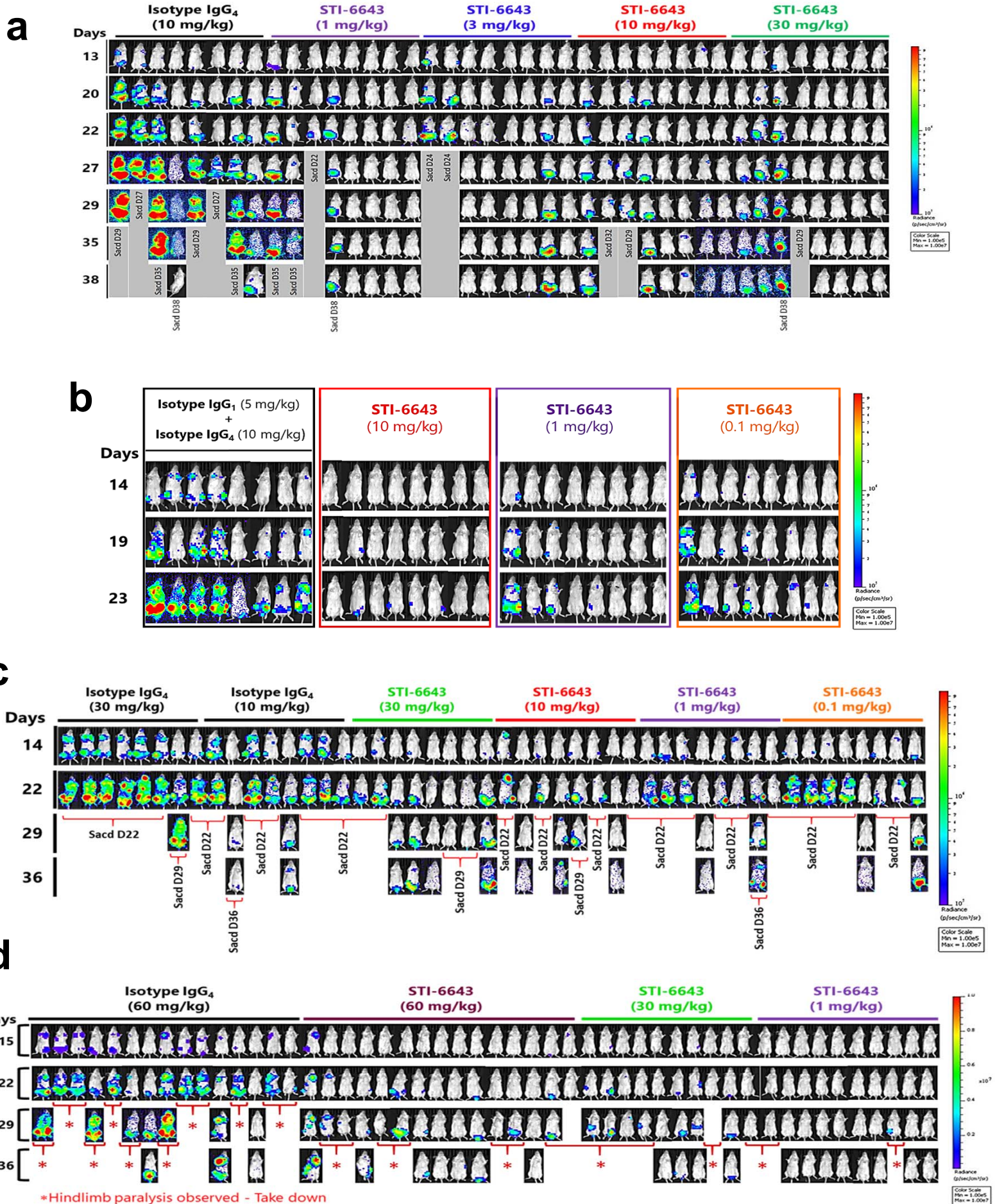


c

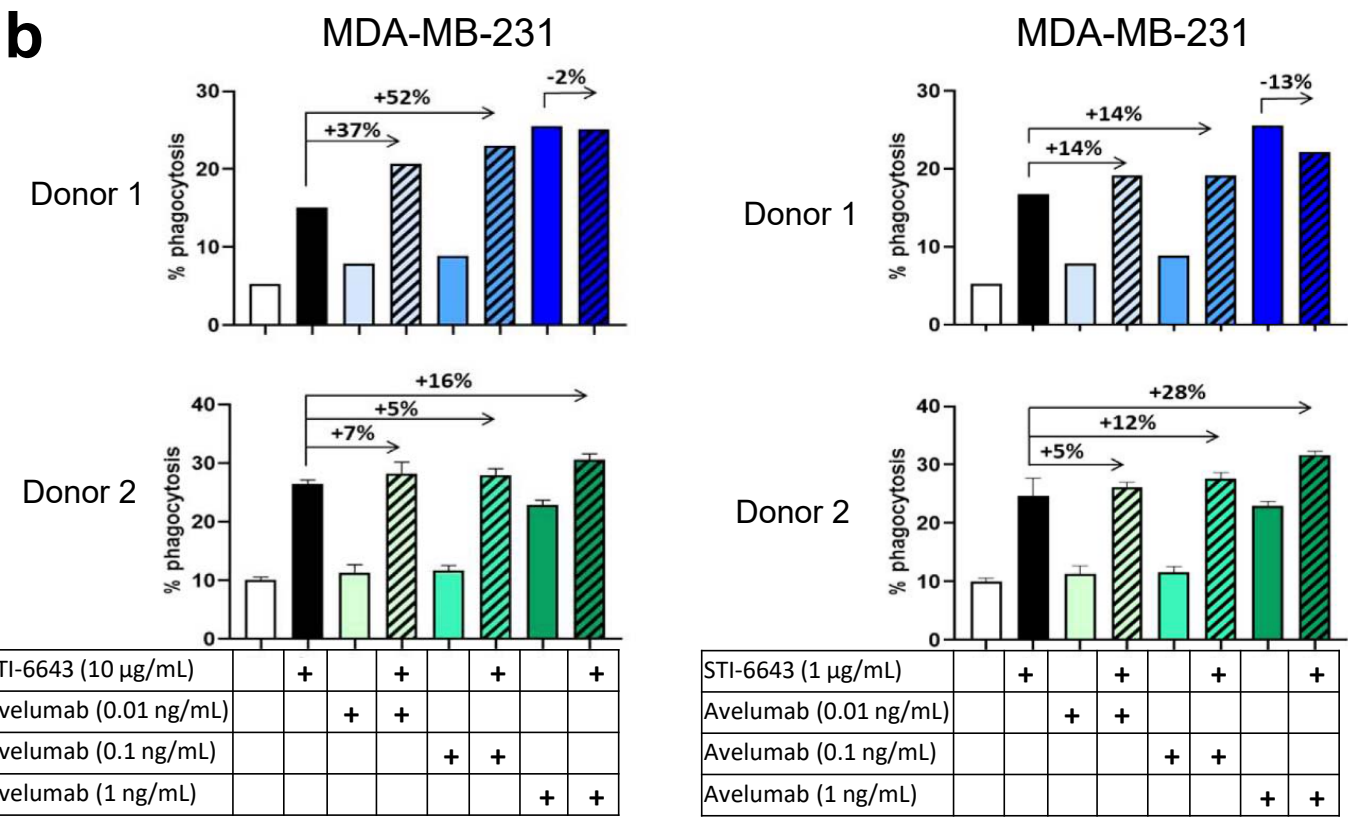
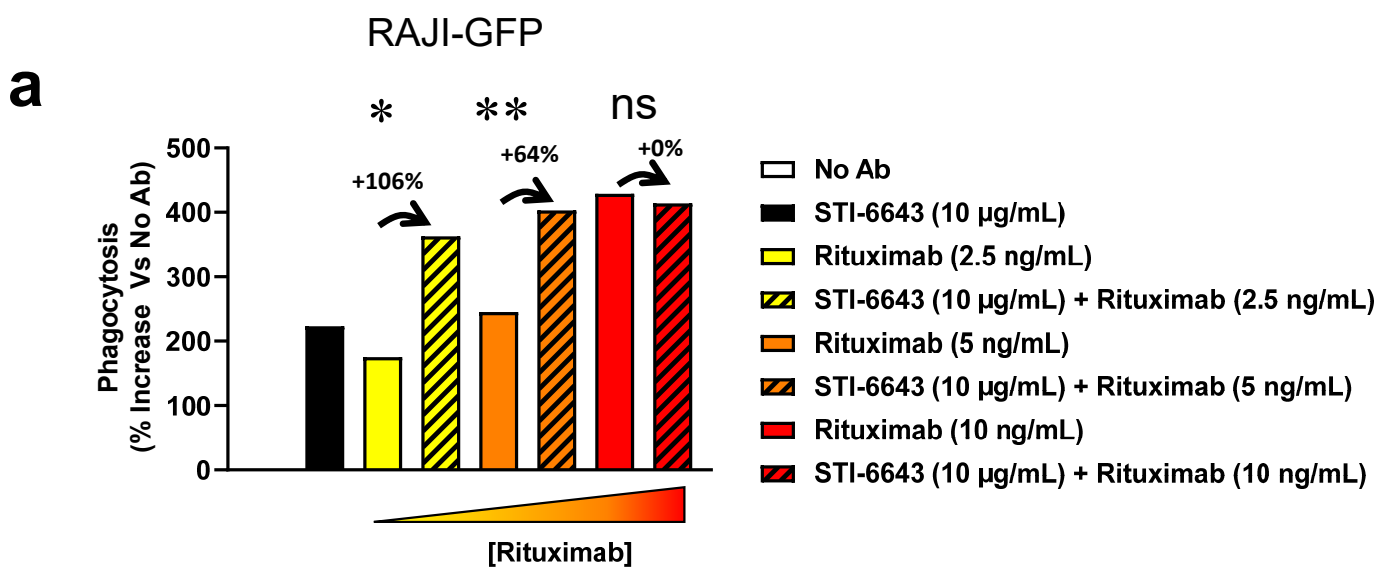
Gender	Date	Number of Animals	Dose (mg/kg)	T_{\max}			C_{\max} ($\mu\text{g/mL}$)			$AUC_{(0-168\text{ h})}$ ($\text{h} \cdot \mu\text{g/mL}$)			$T_{1/2}$ (Hours)		
				Median	Min	Max	Mean	\pm	SD	Mean	\pm	SD	Mean	\pm	SD
Female	D1	5	300	2	2	2	6685.86	\pm	452.08	571136.90	\pm	43665.05	102	\pm	0
	D22	5	300	2	2	8	9351.43	\pm	960.26	835329.19	\pm	146799.64	56.7	\pm	0
Male	D1	5	300	2	2	8	6162.70	\pm	775.91	552376.17	\pm	43909.21	NC	\pm	NC
	D22	5	300	2	2	2	10012.39	\pm	455.76	981030.99	\pm	109375.75	NC	\pm	NC

NC: Not calculable (the concentration of STI-6643 in Cynomolgus monkey plasma has not reached the elimination phase, and the accurate half-life cannot be calculated).

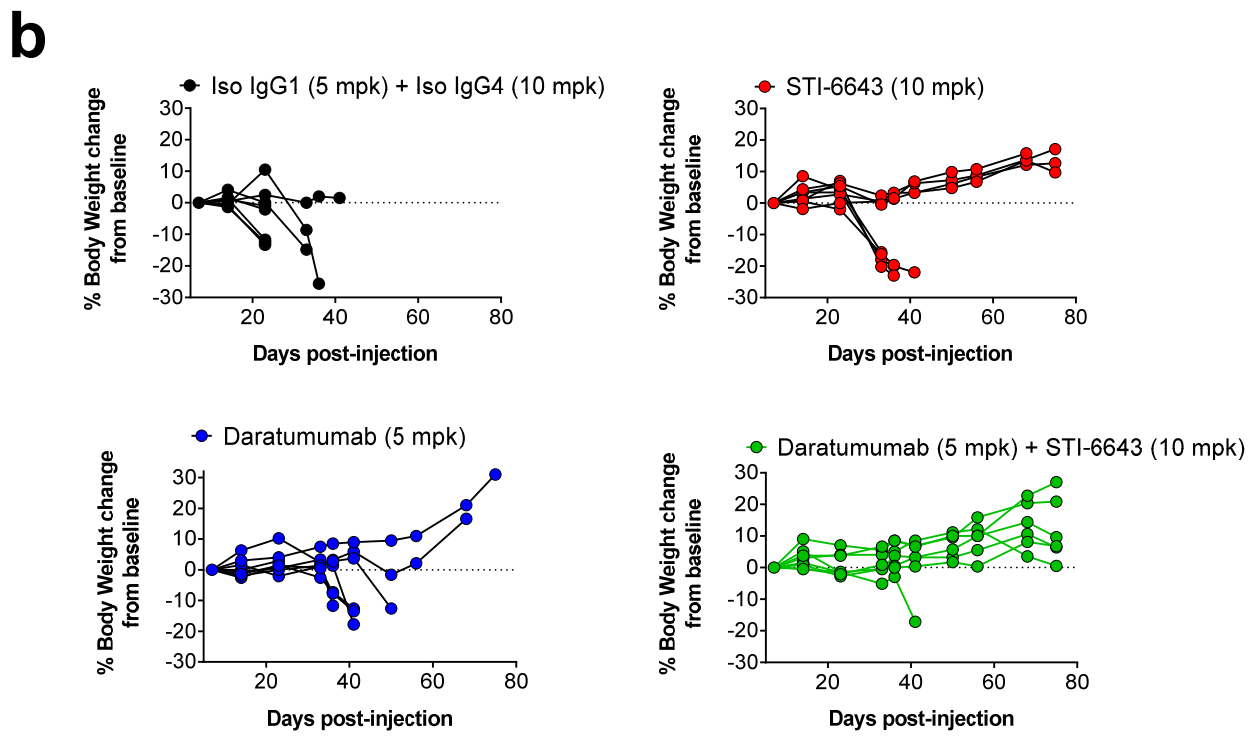
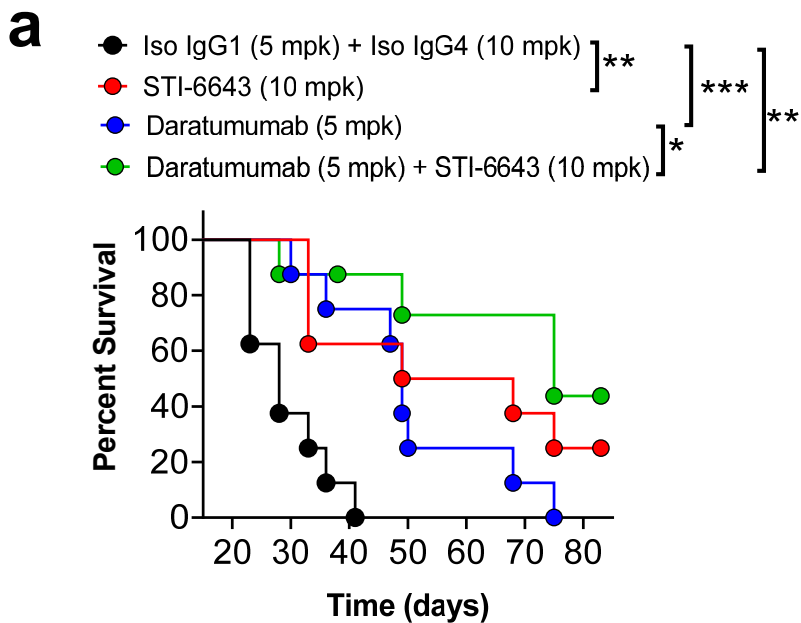
Supplementary Figure 3



Supplementary Figure 4

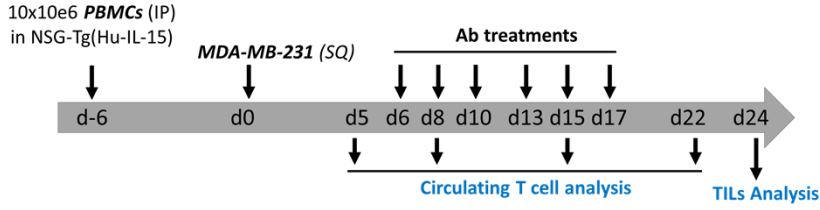


Supplementary Figure 5

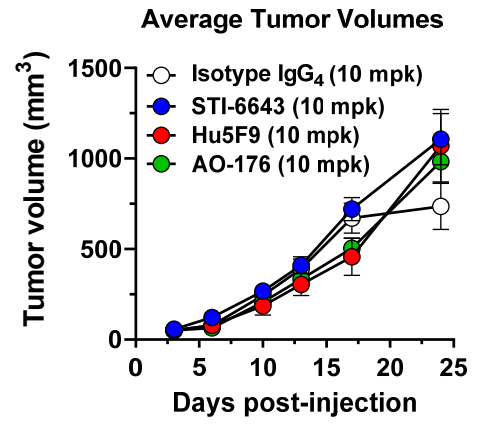


Supplementary Figure 6

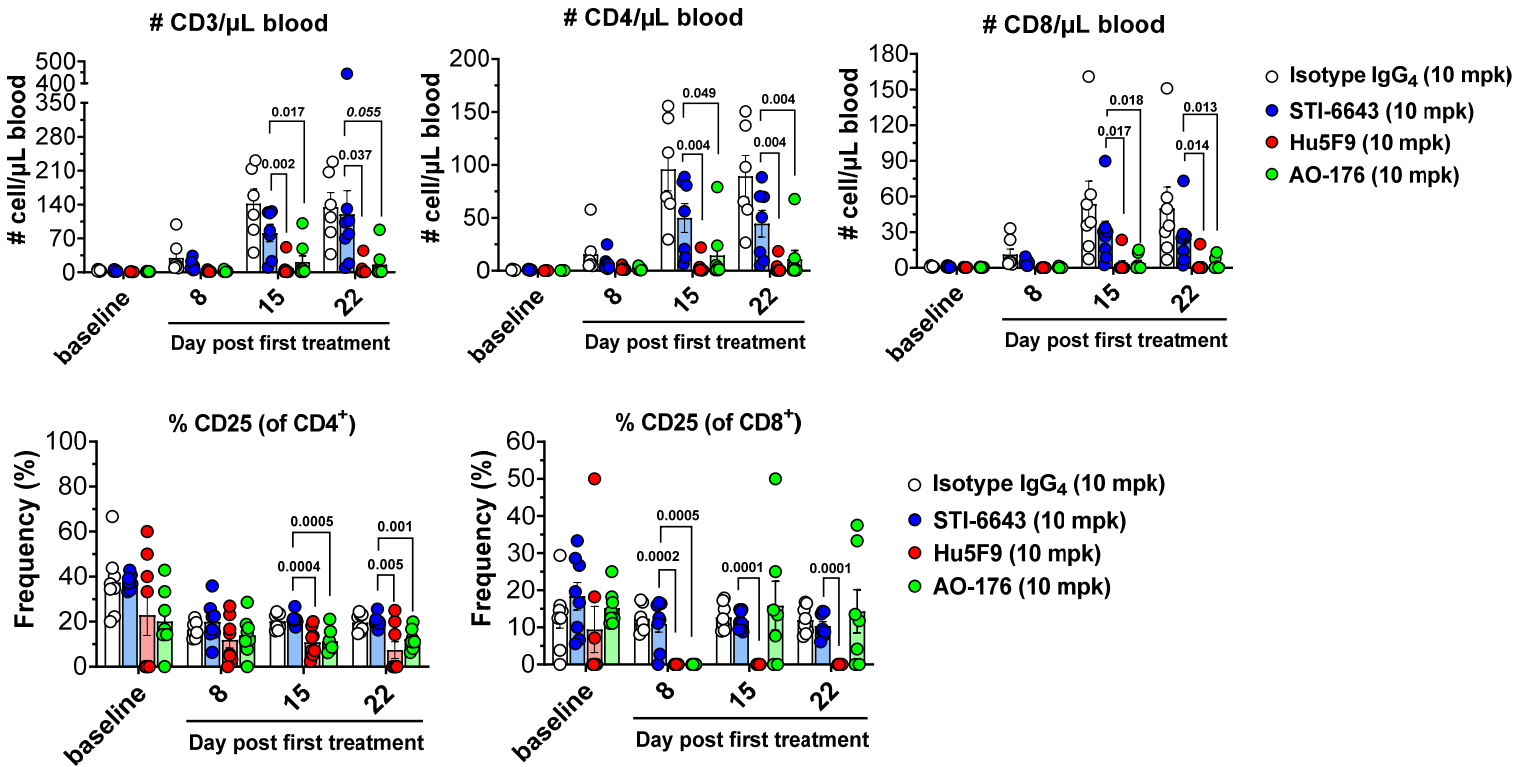
a



b



c



d

