

# Cost-utility analysis of adding abiraterone acetate plus prednisone/prednisolone to long-term hormone therapy in newly diagnosed advanced prostate cancer: lifetime decision model in England based on STAMPEDE trial data

Caroline S Clarke\*, Rachael M Hunter, Andrea Gabrio, Christopher D Brawley, Fiona C Ingleby, David P Dearnaley, David Matheson, Gerhardt Attard, Hannah L Rush, Rob J Jones, William Cross, Chris Parker, J Martin Russell, Robin Millman, Silke Gillessen, Zafar Malik, Jason F Lester, James Wylie, Noel W Clarke, Mahesh KB Parmar, Matthew R Sydes, Nicholas D James on behalf of the STAMPEDE investigators

\* Corresponding author: [caroline.clarke@ucl.ac.uk](mailto:caroline.clarke@ucl.ac.uk) (CSC), Research Department of Primary Care and Population Health, University College London, London, UK.

## Supporting Information

### File 7

#### Relating to *Results: Lifetime simulation model: Survival and quality-adjusted survival* section of the main manuscript

The results for overall and failure-free survival and quality-adjusted survival are shown for the overall patient population in Fig S3.

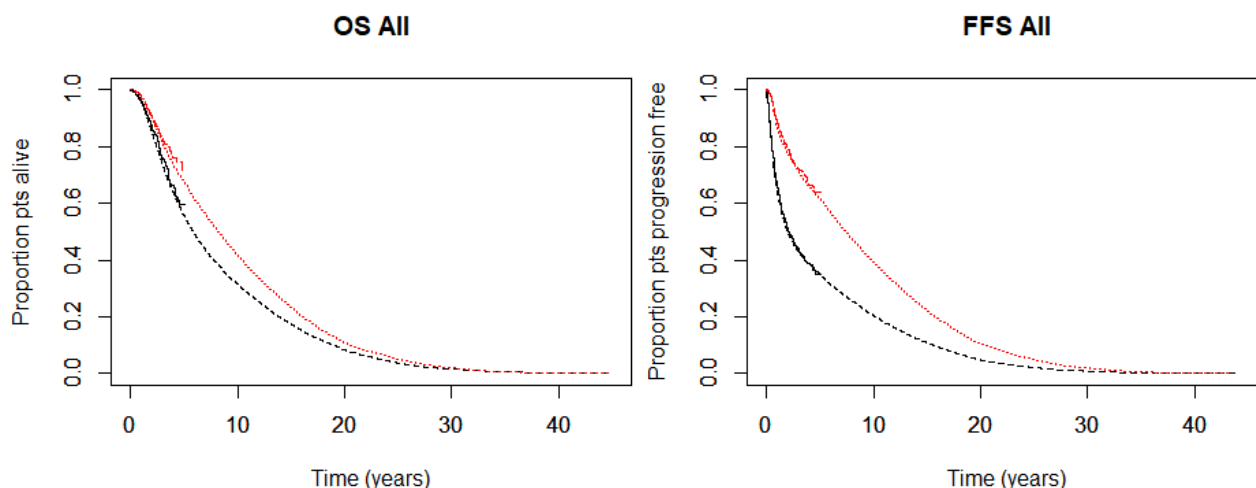


Fig S3. Overall and failure-free survival for all patients. Stepped lines to around 5 years are observed data and smooth lines to 45 years are estimated data from the lifetime simulation model. In the lifetime lines, short dashes (red) indicate the AAP+SOC arm, and longer dashes (black) indicate the SOC-only arm.