

Fig. S1. Colocalization of α 2A-AR with the Golgi markers. HeLa cells were transfected with Str-KDEL_SBP-mCherry- α 2A-AR together with pmTurquoise2-Golgi (A) or GalT-YFP (B) for 20 h and fixed at 30 min after addition of botin. Images shown are representatives of three individual experiments. Scale bars, 10 μ m.

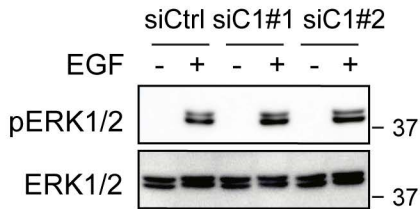
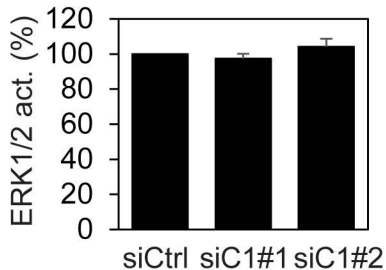
A**B**

Fig. S2. Effect of siRNA-mediated knockdown of C1orf27 on ERK1/2 activation by EGF. A, Western blots showing that C1orf27 knockdown had no effect on ERK1/2 activation by EGF. HEK293 cells were transfected with control siRNA or siRNA targeting C1orf27 and stimulated by EGF at 50 ng/ml for 5 min. B, Quantitative data shown in A. The data are mean \pm SE (n = 3).