

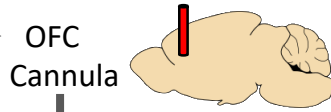
## ADOLESCENT BINGE-TYPE ETHANOL EXPOSURE SUPPRESS CHOLINERGIC TONE IN THE ORBITAL FRONTAL CORTEX

Adolescent Intermittent Ethanol (AIE)

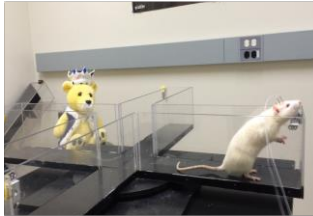


Control Gavage (CON)

Adult

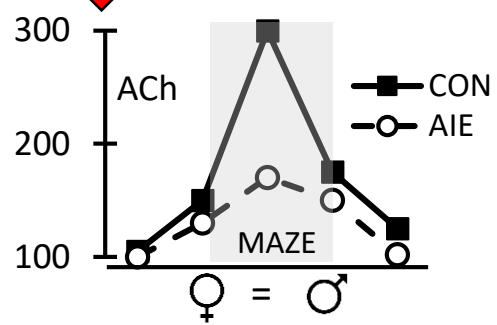


OFC Cannula



Adult Maze & Microdialysis

AIE ↓ cholinergic tone in the OFC



AIE ↑ dendritic branching

