

Table 1S Clinical characteristics in unmatched groups.

	SIERRA-75 N = 1064	Control N = 730	P	95% CI
Age	80.8 ± 4.2	80.75 ± 4.5	0.8	-0.45% to 0.35%
Women	389 (36.6%)	245 (33.5%)	0.18	-1.4 to 7.5%
BMI	27.4 ± 4	27.1 ± 4	0.12	-0.68% to 0.08%
Diabetes	462 (43.4%)	288 (39.4%)	0.11	-0.65% to 8.6%
Diabetes insulin-treated	106 (10%)	60 (8.2%)	0.2	-0.97% to 4.4%
Hypertension	885 (83.2%)	584 (80%)	0.08	-0.42% to 6.9%
Dyslipidemia	664 (62.4%)	415 (56.8%)	0.02	0.99% to 10.2%
Smoker	71 (6.6%)	51 (7%)	0.7	-1.9% to 2.9%
Previous MI	213 (20%)	153 (20.9%)	0.6	-0.29% to 4.7%
Previous stroke	90 (8.4%)	80 (11%)	0.06	-0.16% to 5.5%
Previous PCI	234 (22%)	133 (18.2%)	0.05	-0.004% to 7.57%
Previous CABG	31 (2.9%)	29 (4%)	0.21	-0.6% to 2.99%
Previous heart failure	110 (10.3%)	72 (9.8%)	0.7	-2.4% to 3.3%
Previous major bleeding	51 (4.7%)	50 (6.8%)	0.06	-0.06% to 4.4%
Peripheral vasc. disease	96 (9%)	66 (9%)	1	-2.6% to 2.8%
GFR < 30 mL/min	71 (6.7%)	39 (5.3%)	0.2	-0.91% to 3.6%
GFR 30-60 mL/min	418 (39.3%)	260 (35.6%)	0.12	-0.9% to 8.2%
Anemia	530 (49.8%)	292 (40%)	0.0001	5.1% to 14.4%
PRECISE DAPT	30.5 ± 11.4	30.9 ± 11.6	0.52	-0.68% to 1.54%
CHA ₂ DS ₂ -VASc	4.2 ± 1.2	4.04 ± 1.3	0.007	-0.27% to -0.039%
HAS BLED	2.7 ± 0.8	2.51 ± 0.83	0.0001	-0.27% to -0.11%
GRACE score	133 ± 26	136 ± 23.5	0.01	0.64% to 5.36%
LVEF, %	53 ± 12	52.6 ± 11.4	0.45	-1.5% to 0.71%
NSTEMI	421 (39.6%)	255 (34.9%)	0.04	0.14% to 9.2%
STEMI	187 (17.6%)	146 (20%)	0.23	-1.2% to 6.1%
Unstable angina	160 (15%)	118 (16.1%)	0.50	-2.2% to 4.59%
ACS	757 (71.1%)	515 (70.5%)	0.72	-3.58% to 4.97%

Data are presented as mean ± SD or n (%). Anemia was defined as a hemoglobin value of less than 13 gm/dL in a man or less than 12 gm/dL in a woman. ACS: acute coronary syndrome; BMI: body mass index; CABG: coronary artery bypass grafting; GFR: glomerular filtration rate; LVEF: left ventricular ejection fraction; MI: myocardial infarction; NSTEMI: non-ST elevated myocardial infarction; PCI: percutaneous coronary intervention; STEMI: ST elevated myocardial infarction.

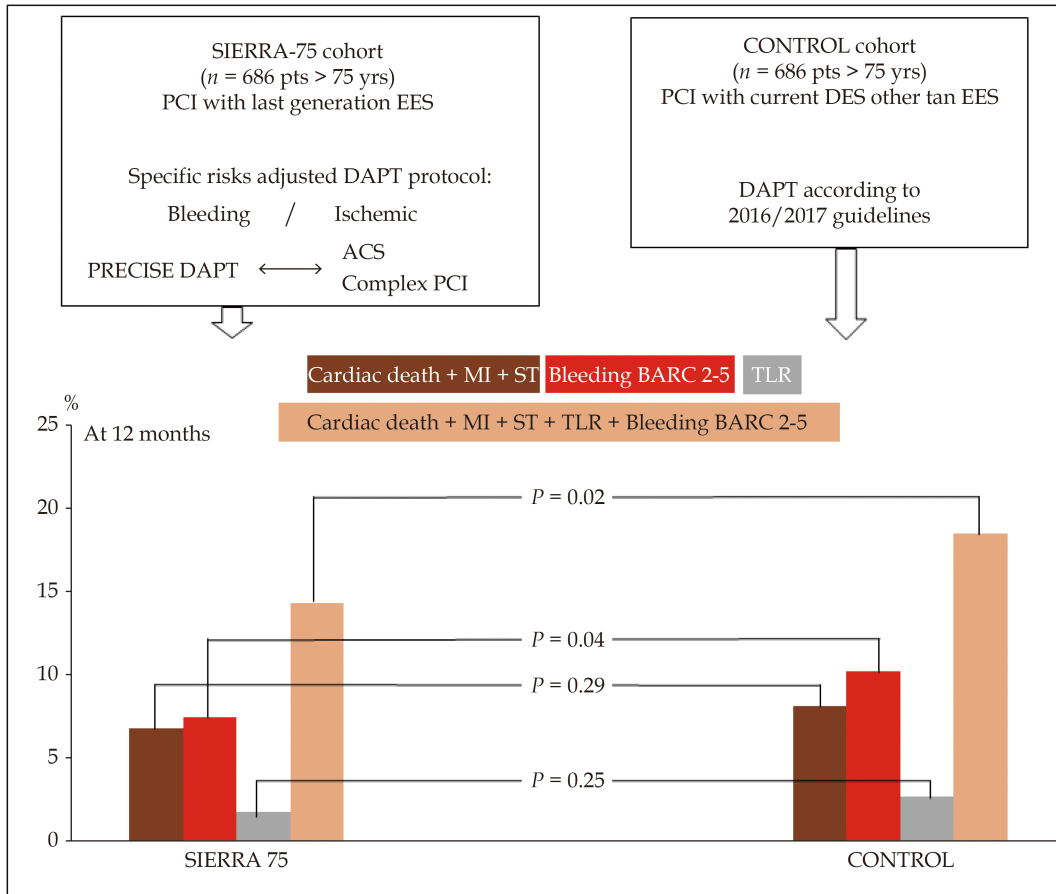


Figure 15 Central illustration.