

## **Appendix for:**

### **A GID E3 ligase assembly ubiquitinates an Rsp5 E3 adaptor and regulates plasma membrane transporters**

Christine R. Langlois<sup>1#</sup>, Viola Beier<sup>1</sup>, Ozge Karayel<sup>2</sup>, Jakub Chrustowicz<sup>1</sup>, Dawafuti Sherpa<sup>1</sup>, Matthias Mann<sup>2</sup>, Brenda A. Schulman<sup>1#</sup>

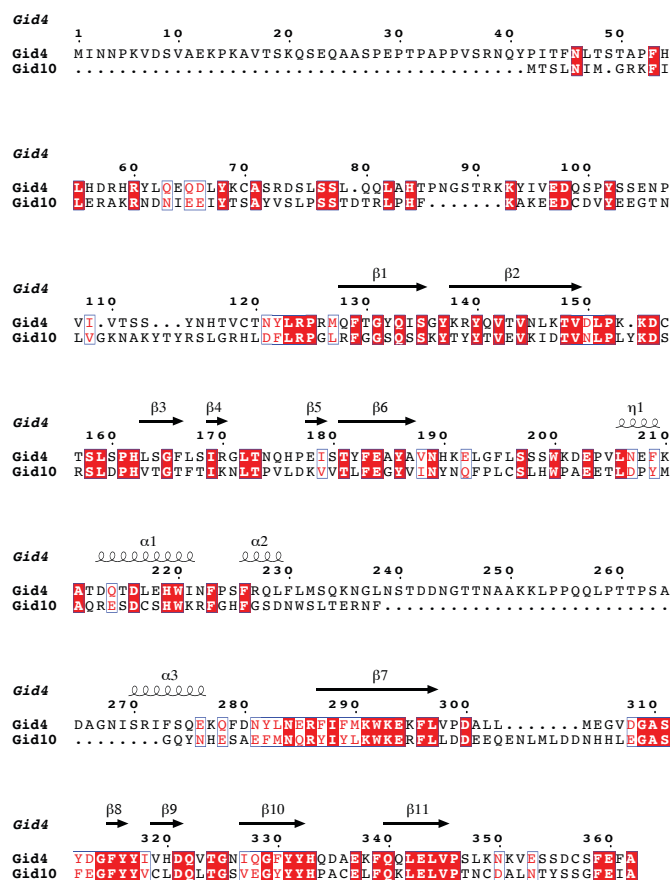
<sup>1</sup> Department of Molecular Machines and Signaling, Max Planck Institute of Biochemistry, 82152 Martinsried, Germany

<sup>2</sup> Department of Proteomics and Signal Transduction, Max Planck Institute of Biochemistry, 82152 Martinsried, Germany

# Correspondence: langlois@biochem.mpg.de and schulman@biochem.mpg.de

## **Table of Contents**

Appendix Figure S1



### Appendix Figure S1. Alignment of *Gid4* and *Gid10*

Sequence alignment of *Gid4* and *Gid10* based on the structure of *Gid4* (PDB: 7NS3). The alignment was generated using hierarchical clustering-based multiple sequence alignment (ESPrnt 3.0). Here beta strands are indicated with arrows and alpha helices are shown as coils. The residues displayed in white within red boxes indicate strict identity and the ones displayed in red inside black-framed boxes indicate similarity.