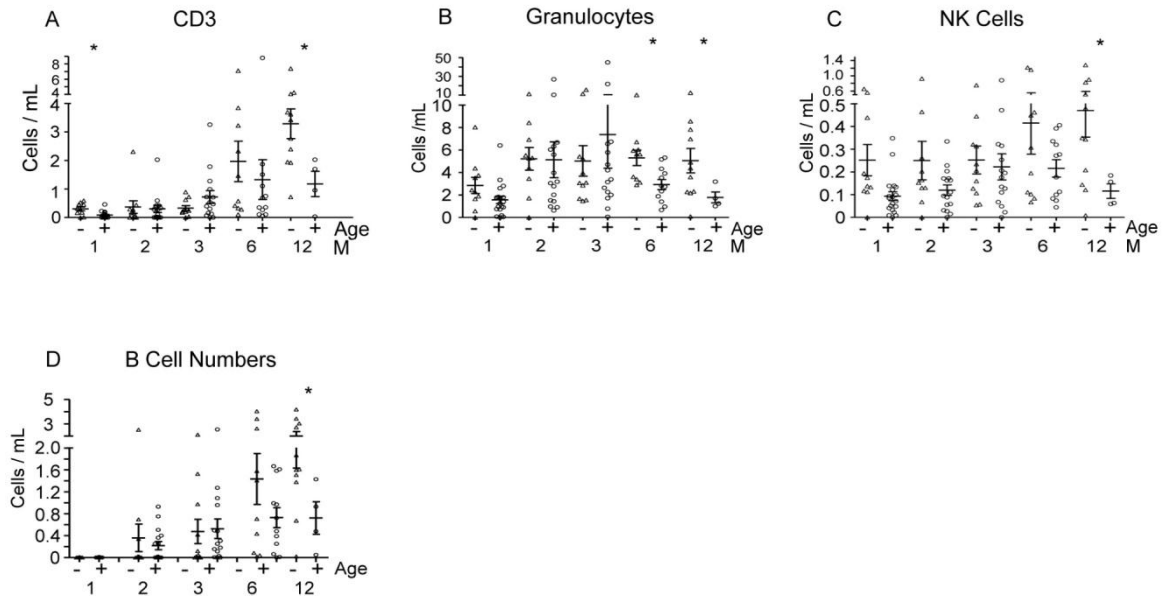
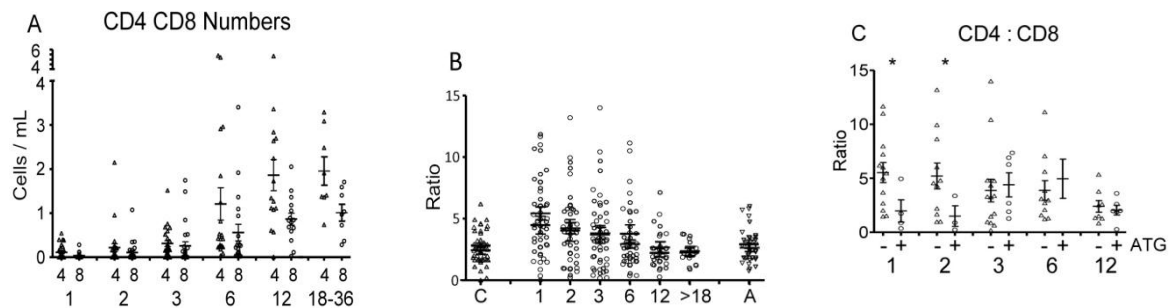


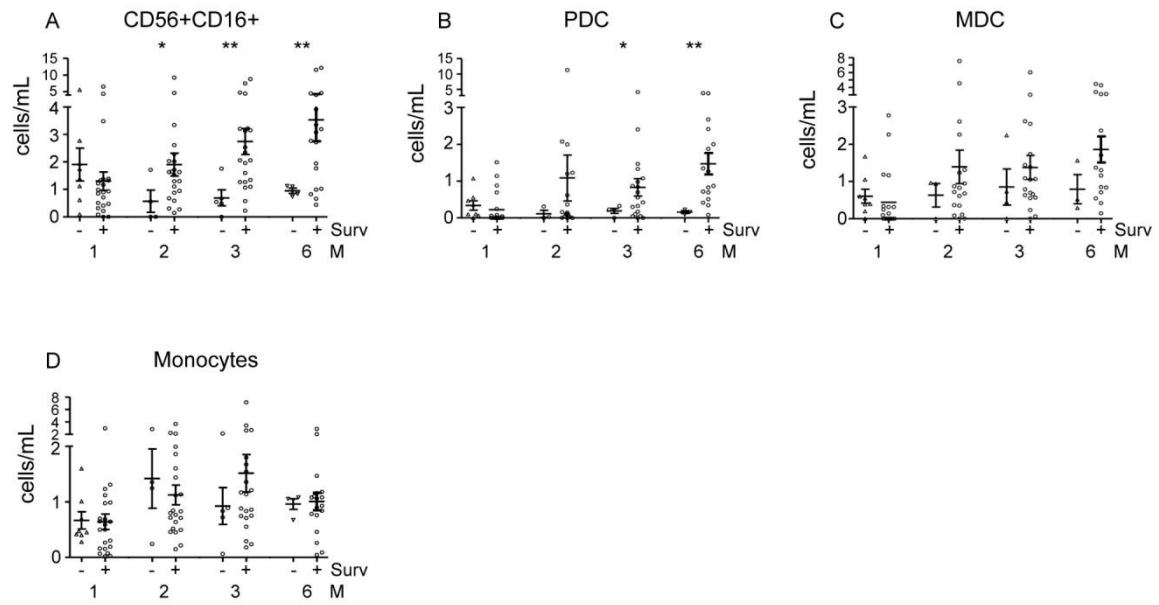
## Supplementary Figures



Supp fig 1. Absolute cell levels according to median age. (a) CD3, (b) granulocytes and (c) CD56+CD16+ NK cells (in  $10^6$  cells/mL) by median age (- below, + above) at 1 to 12 months post-transplant. Asterisks:  $P < 0.05$ . Further statistical information in Supp Table 7.



Supp fig 2. CD4 and CD8 T subsets. (a) Absolute cell levels (in  $10^6$  cells/mL) of CD4 (4) and CD8 (8) T cells at months post-transplant for all patients (, (b) CD4:CD8 ratios for all patients, (c) CD4:CD8 ratios according to ATG treatment. Bars represent means with standard errors, asterisks:  $P < 0.05$ . Further statistical information in Supp Table 8.



Supp fig 3. One year survival correlations. Numbers of (A) CD56+16+ NK cells ( $\times 10^5$ ), (B) PDC ( $\times 10^4$ ), (C) MDC ( $\times 10^4$ ) and (D) CD14+ monocytes ( $\times 10^6$ ) are shown according to survival (Surv +) or not (-) at months (M) after transplant. For ‘-’, 1M n=8, 2M n=4, 3M n=5, 6M n=4. (\* P<0.05, \*\* P<0.005.) Further statistical information in Supp Table 9.