

1. Esophagus (1.7×10^{-4}) n=24
2. Basal A (2.8×10^{-4}) n=15
3. Upper Aerodigestive (3.9×10^{-4}) n=19
4. Upper Aerodigestive Squamous (3.9×10^{-4}) n=19

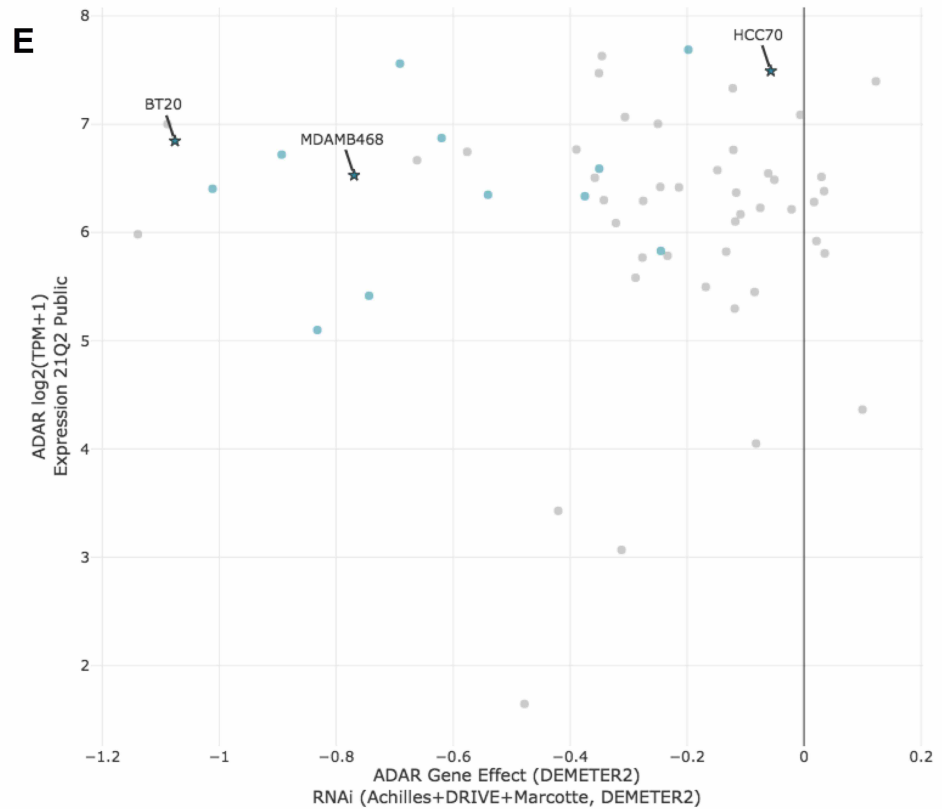


Figure S1

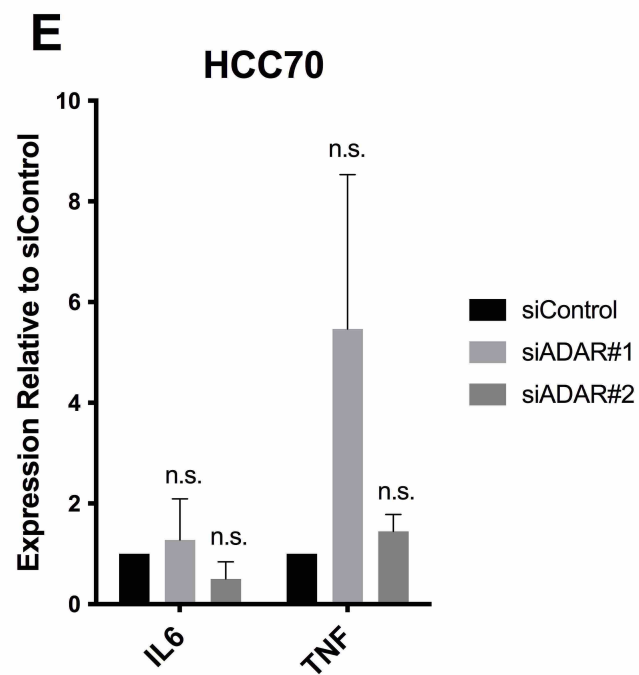
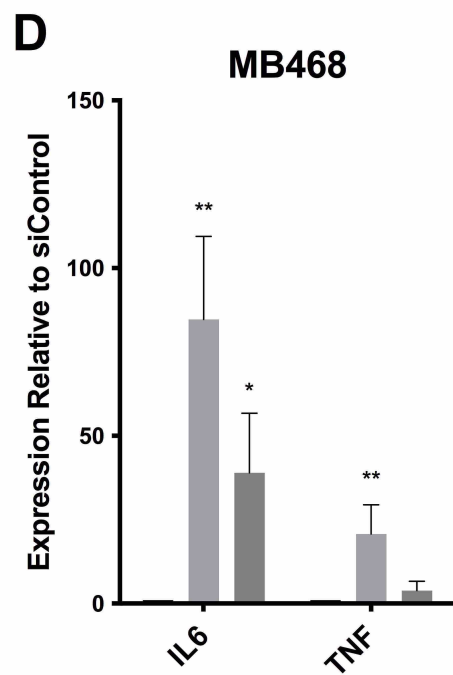
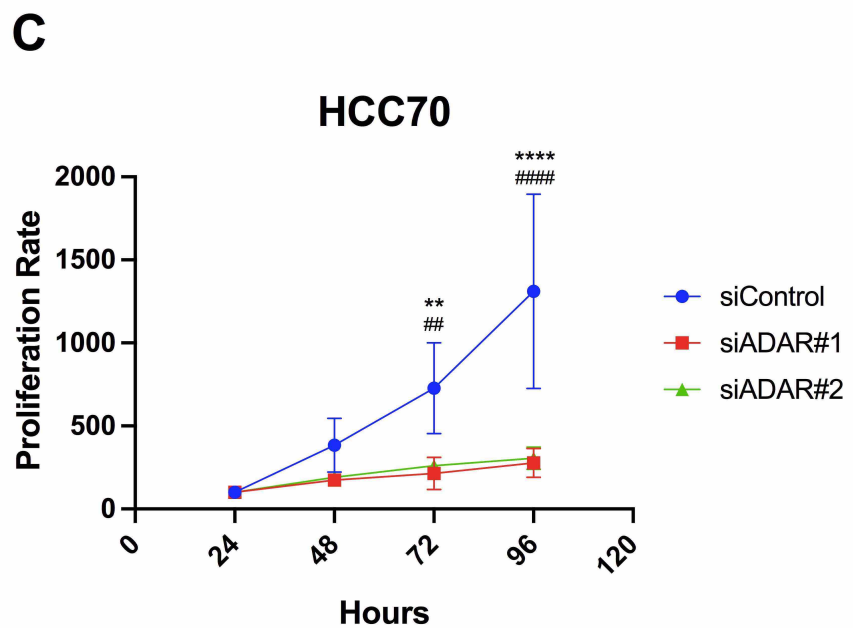
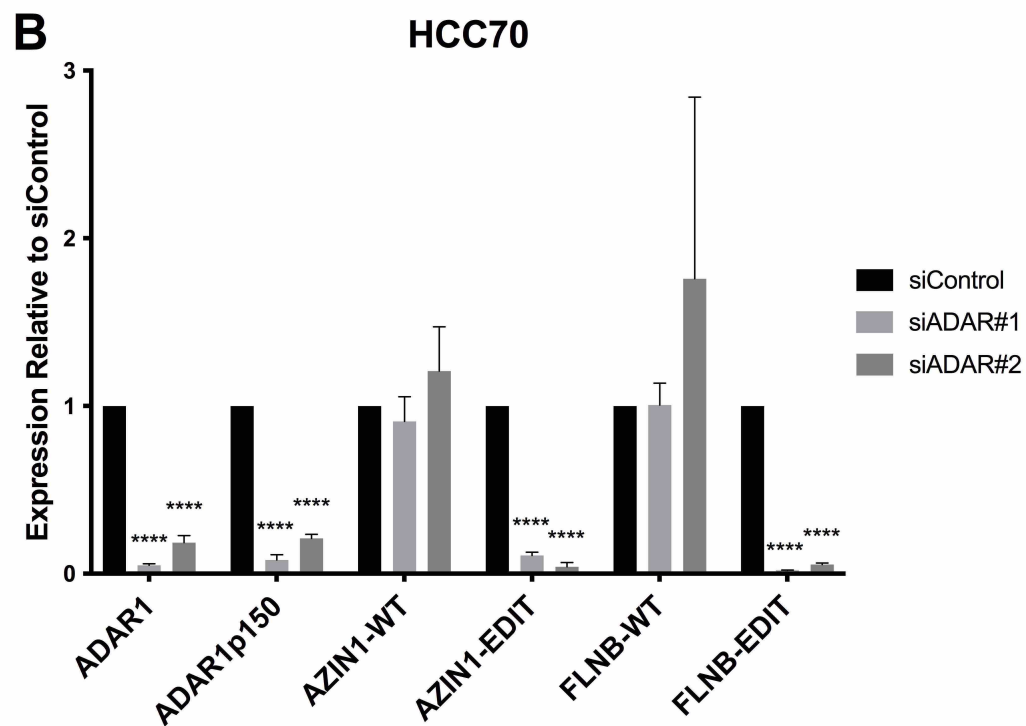
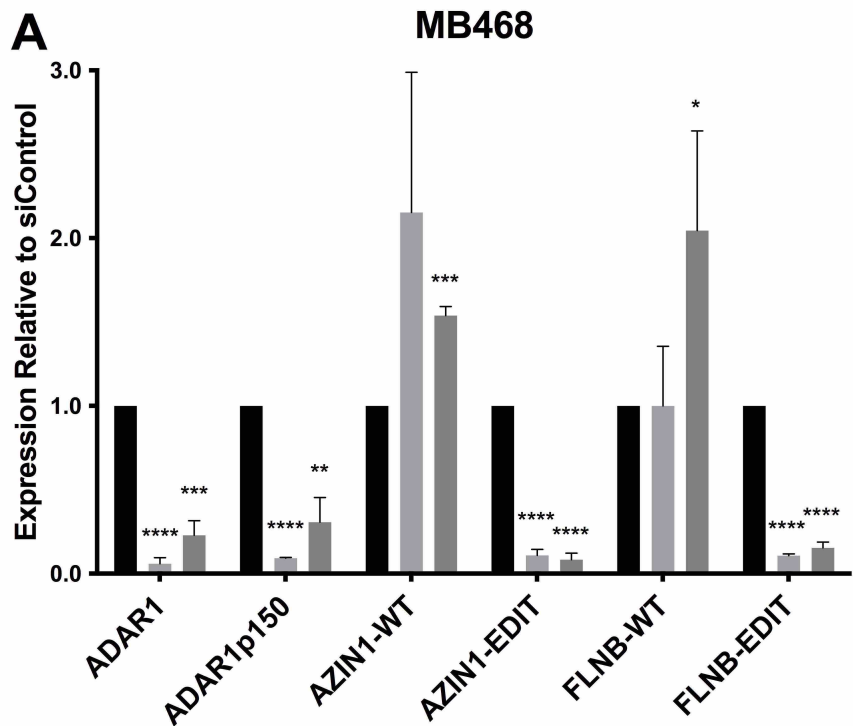


Figure S2

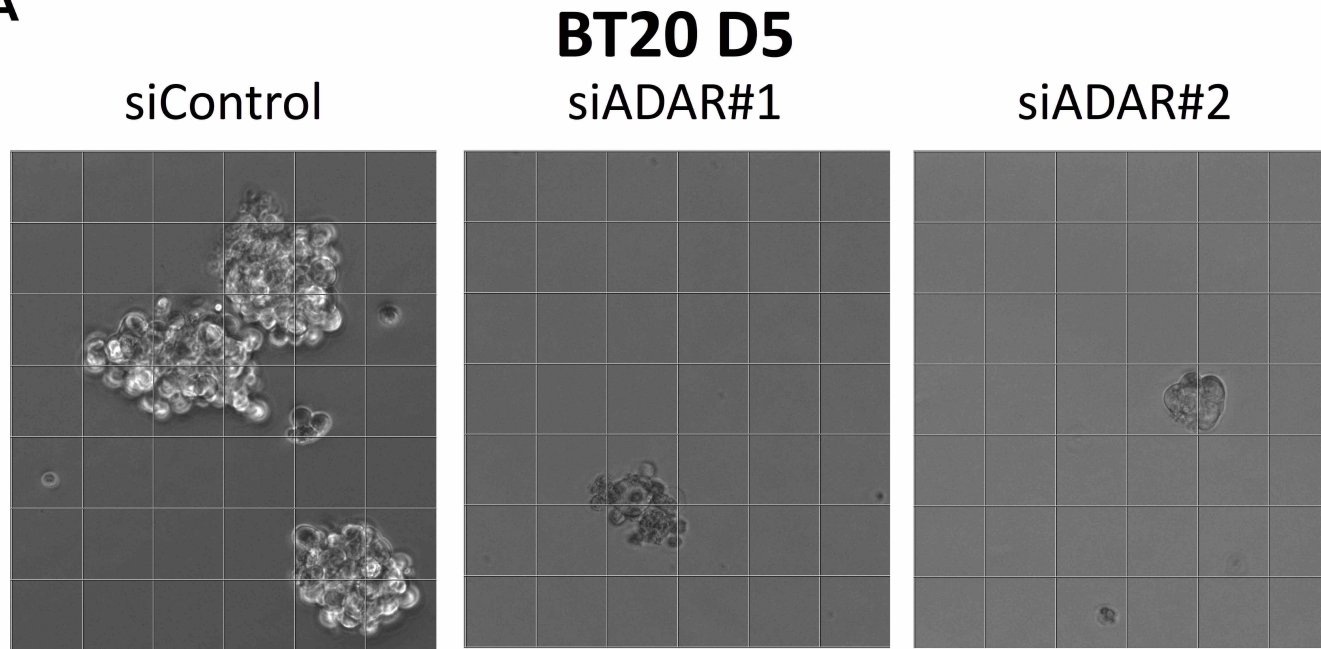
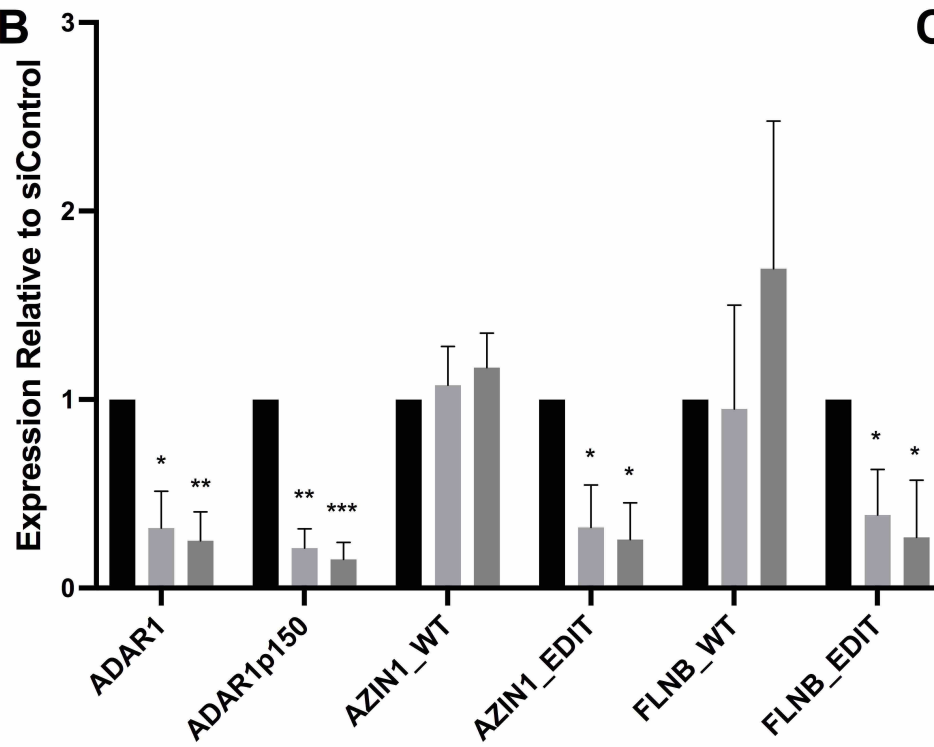
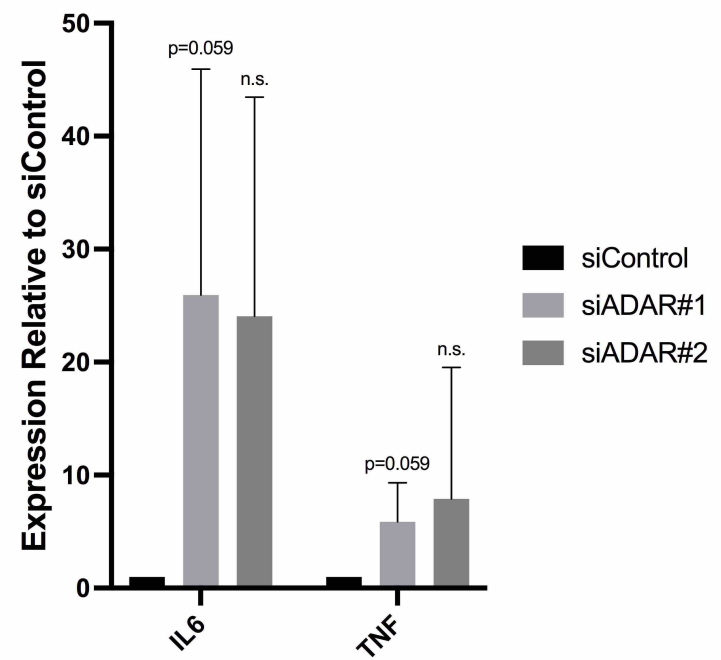
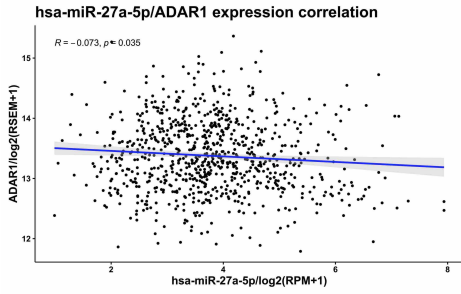
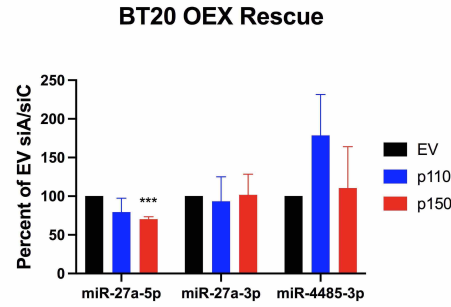
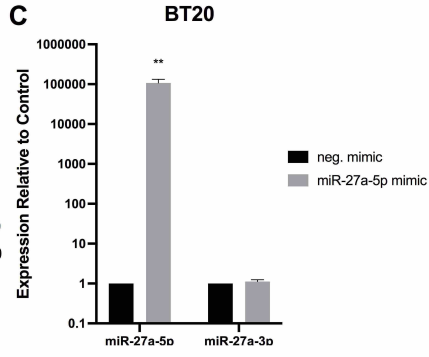
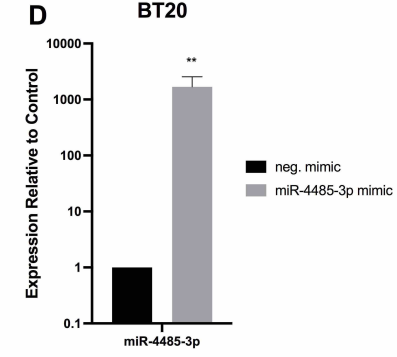
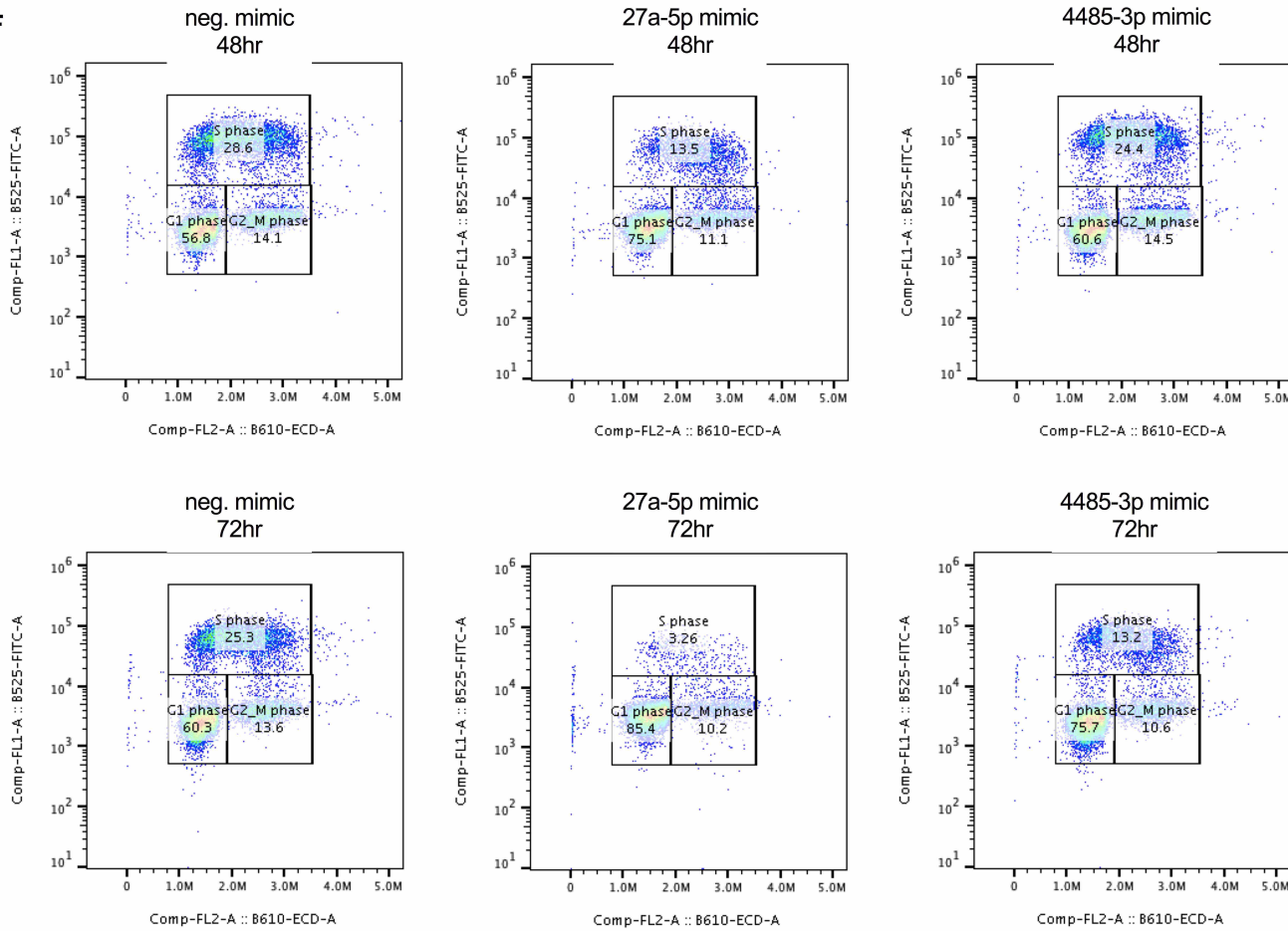
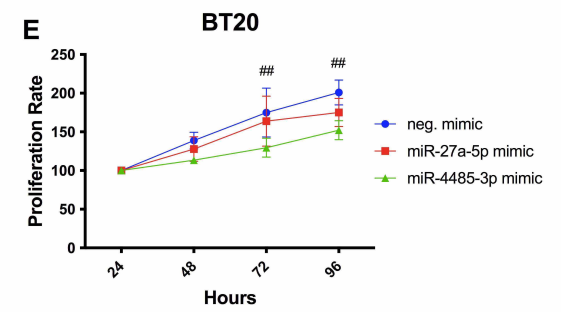
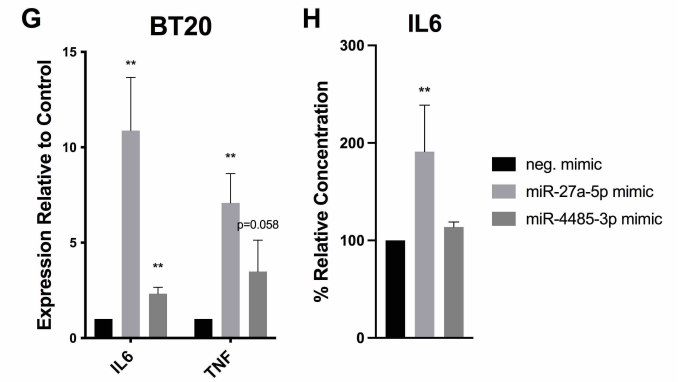
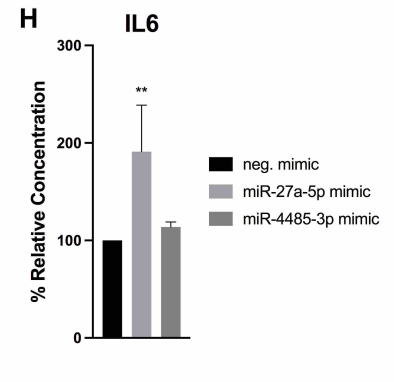
A**B****C**

Figure S3

A**B****C****D****F****E****G****H**

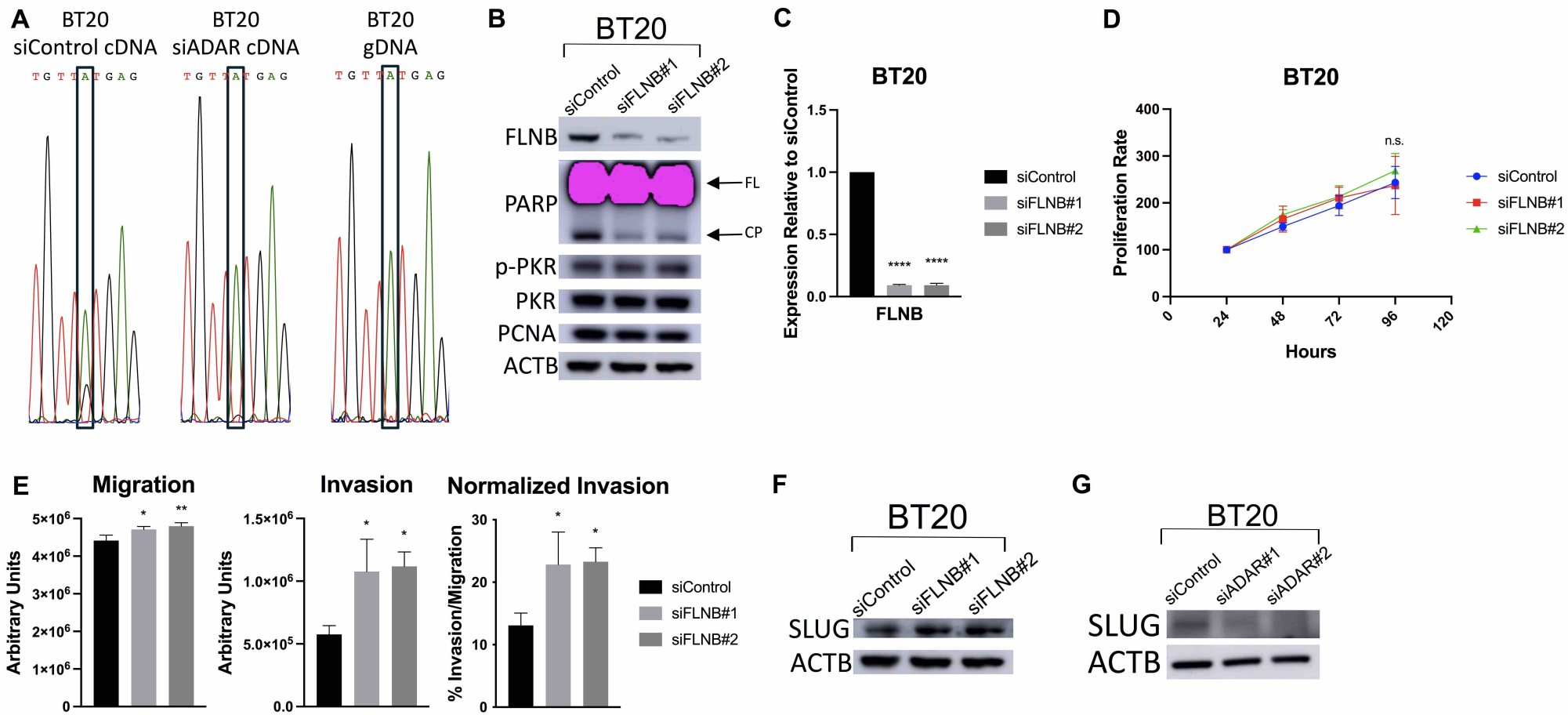


Figure S5

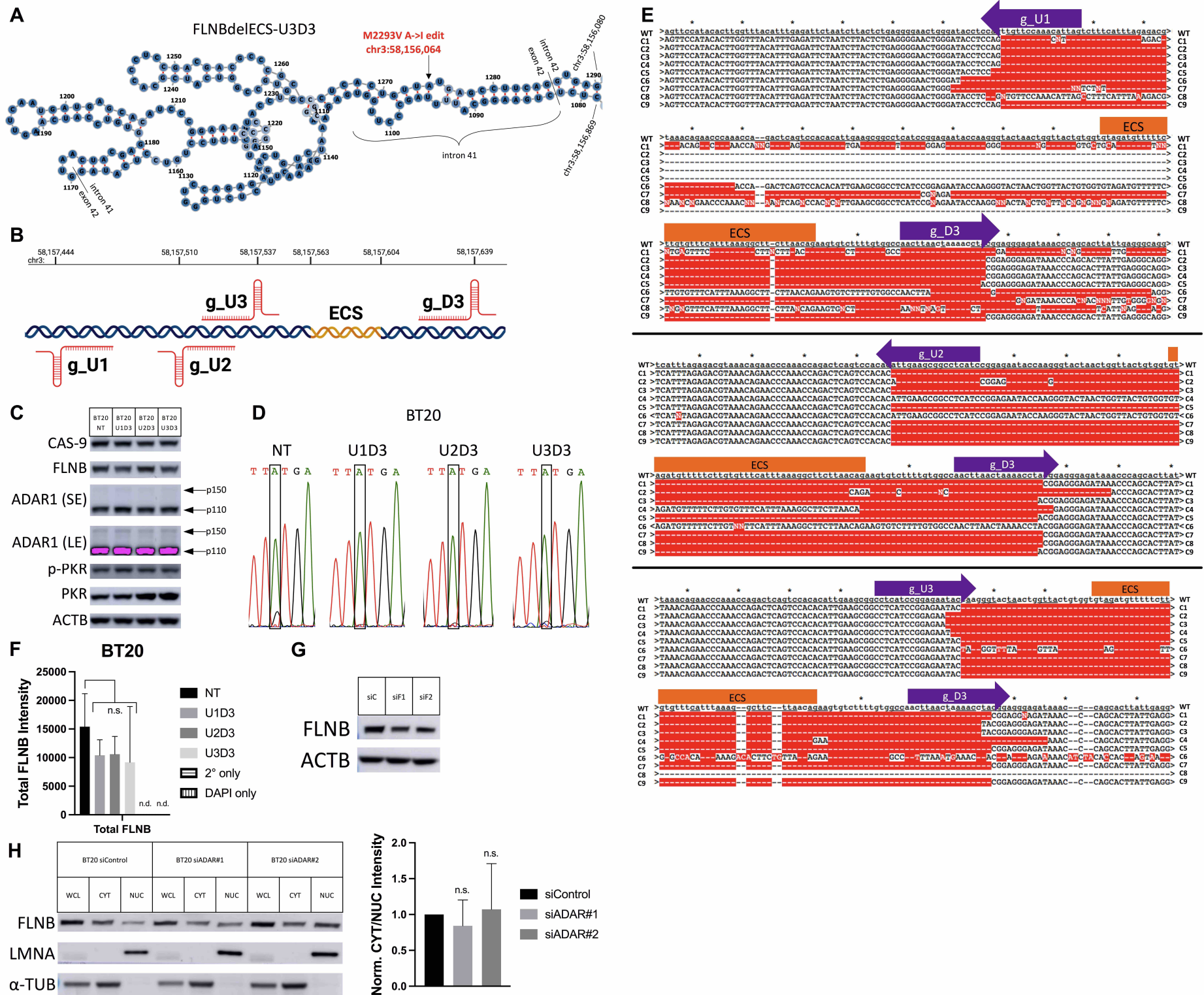


Figure S6

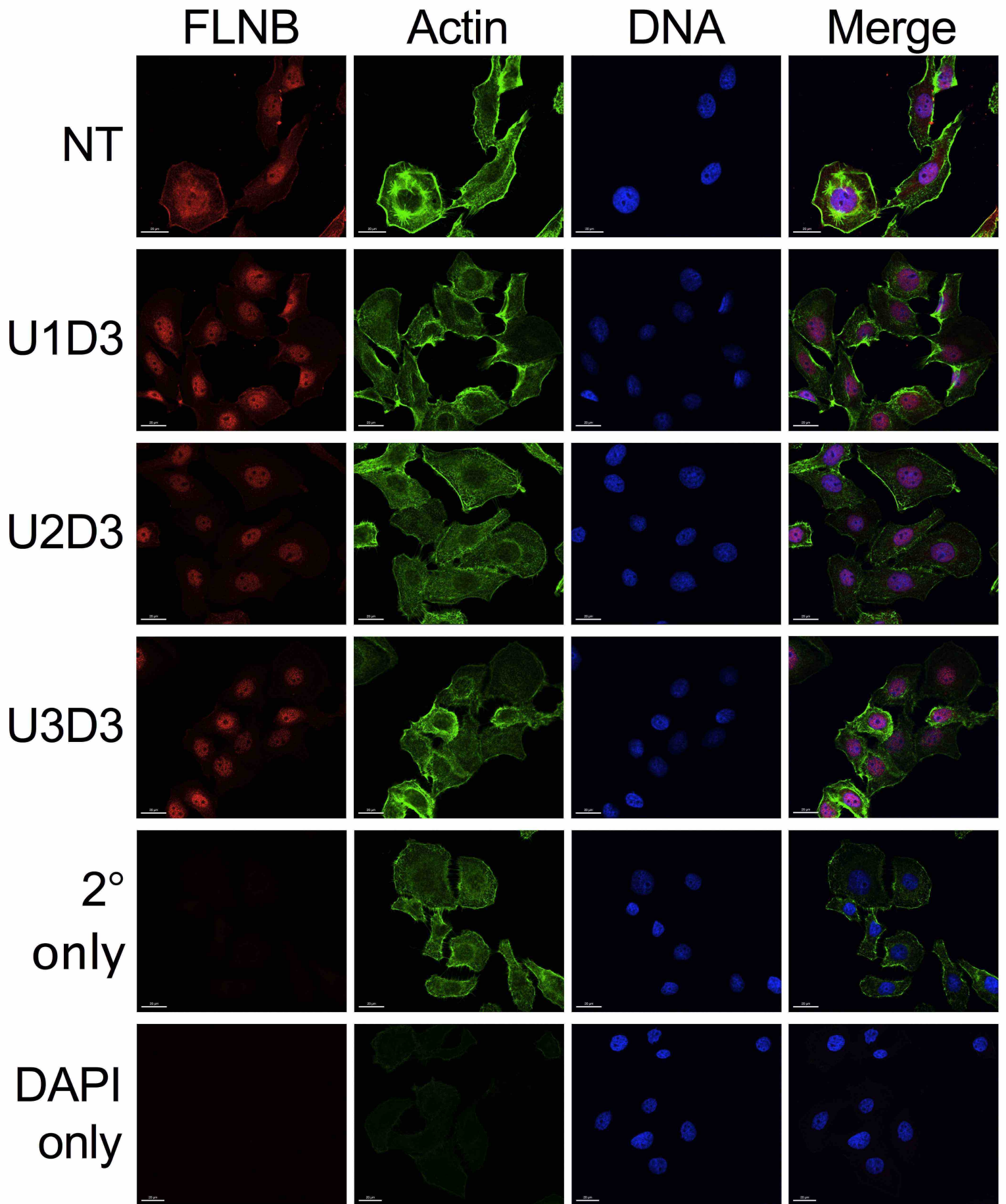


Figure S7

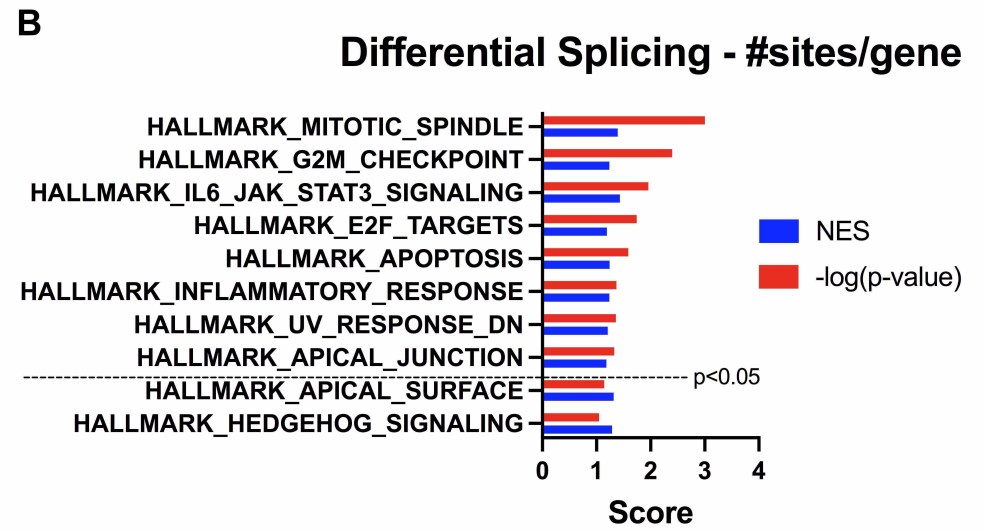
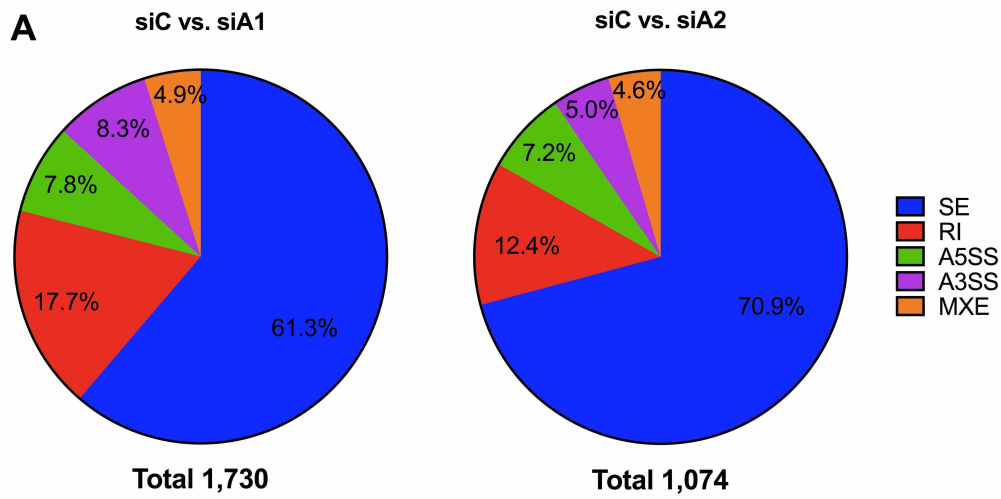


Figure S8