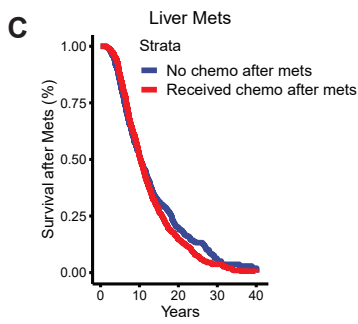
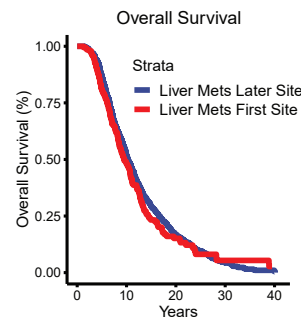


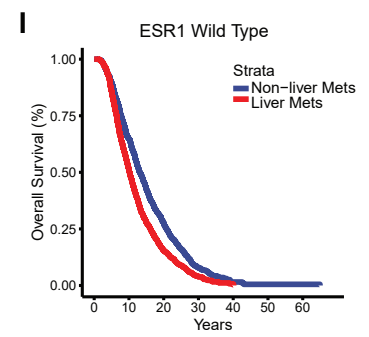
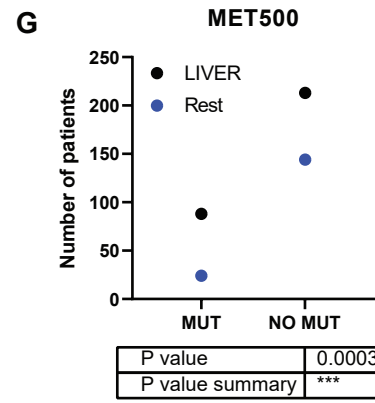
Survival after Liver Mets			
	Median Survival, years (95% CI)	HR (95% CI)	P-value
No Chemo before Mets	8.71 (7.76, 9.7)	-	-
Received Chemo before Mets	11.11 (10.68, 11.69)	1.74 (1.49, 2.03)	<0.001*



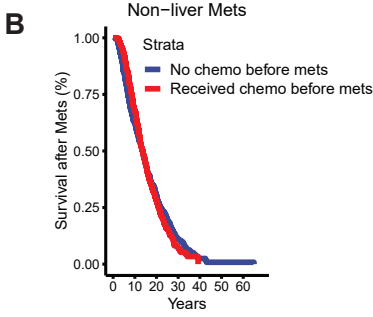
Survival after Liver Mets			
	Median Survival, years (95% CI)	HR (95% CI)	P-value
No Chemo after Mets	10.3 (9.42, 11.5)	-	-
Received Chemo after Mets	10.28 (9.79, 10.87)	1.07 (0.95, 1.22)	0.26



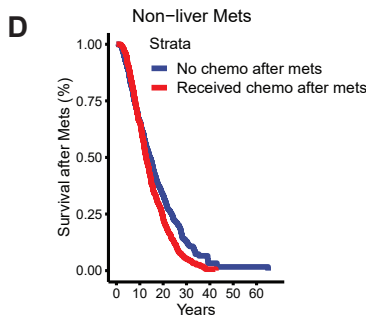
Overall Survival: Liver Mets Later Site vs. First Site			
	Median Survival, years (95% CI)	HR (95% CI)	P-value
Liver Mets Later Site	10.3 (9.9, 10.94)	-	-
Liver Mets First Site	9.53 (8.52, 11.08)	1.08 (0.9, 1.29)	0.41



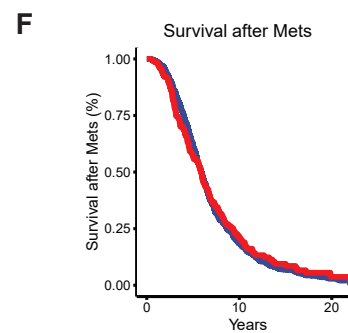
Overall Survival: ESR1 Wild Type			
	Median Survival, years (95% CI)	HR (95% CI)	P-value
Non-Liver Metastasis	13.17 (12.49, 13.95)	-	-
Liver Metastasis	10.15 (9.78, 10.69)	1.47 (1.35, 1.6)	<0.001*



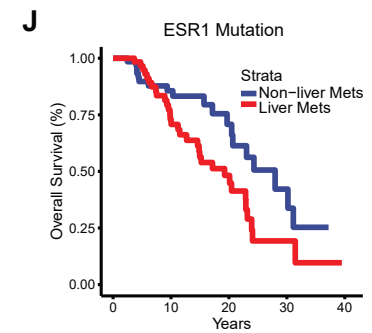
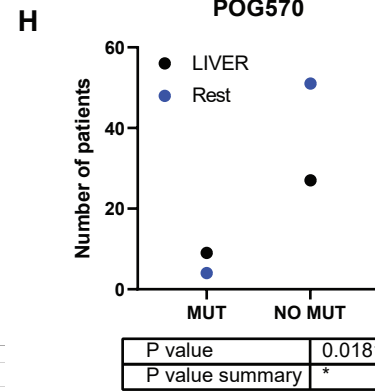
Survival after Non-Liver Mets			
	Median Survival, years (95% CI)	HR (95% CI)	P-value
No Chemo before Mets	13.48 (12.24, 14.67)	-	-
Received Chemo before Mets	13.66 (12.78, 14.62)	1.72 (1.48, 1.99)	<0.001*



Survival after Non-Liver Mets			
	Median Survival, years (95% CI)	HR (95% CI)	P-value
No Chemo after Mets	14.51 (13.39, 15.52)	-	-
Received Chemo after Mets	12.69 (12.02, 13.77)	1.31 (1.15, 1.48)	<0.001*



Survival after Mets: Liver Mets Later Site vs. First Site			
	Median Survival, years (95% CI)	HR (95% CI)	P-value
Liver Mets Later Site	5.91 (5.68, 6.14)	-	-
Liver Mets First Site	5.85 (5.04, 6.67)	0.97 (0.81, 1.16)	0.72



Overall Survival: ESR1 Mutation			
	Median Survival, years (95% CI)	HR (95% CI)	P-value
Non-Liver Metastasis	27.97 (20.66, NA)	-	-
Liver Metastasis	19.25 (14.58, 23.92)	1.63 (0.9, 2.94)	0.1