

Figure E6

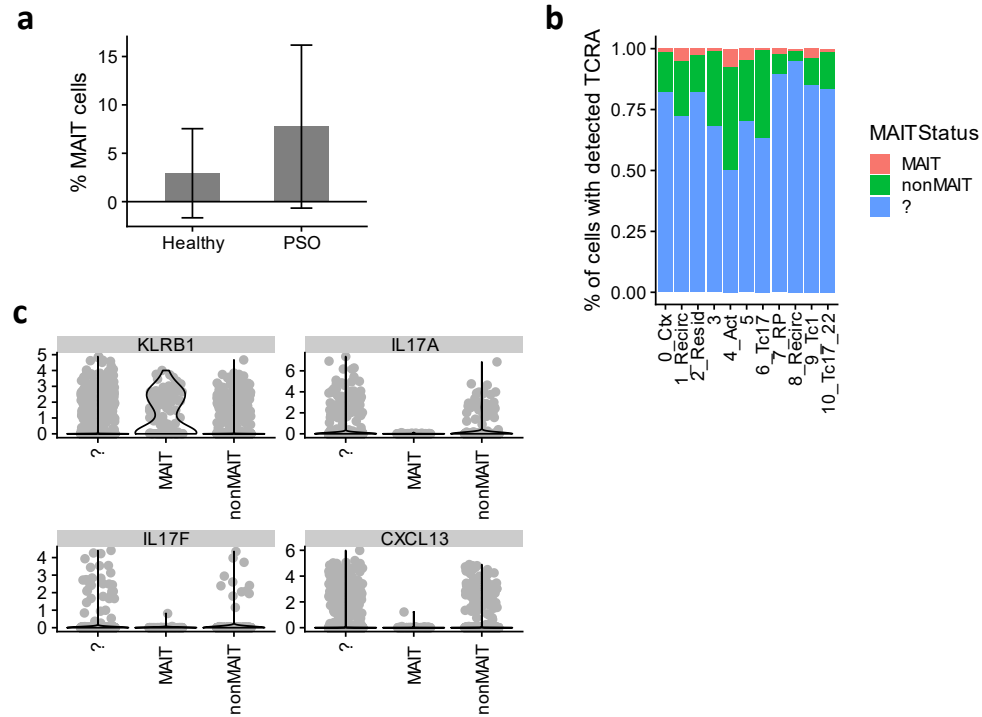


Figure E6. MAIT cells in psoriatic and healthy skin. (a) Average percentage of MAIT cells out of all cells in each healthy and psoriasis patient. Error bars = \pm SD. Differences are not significant (Wilcoxon $p = 0.1708$). (b) Fraction of MAIT cells in each cluster. (c) Expression of Th17 genes and CXCL13 in MAIT cells. “MAIT” = cells with a detected MAIT TCRA, “nonMAIT” = cells with two detected non-MAIT TCRA, “?” = cells with no detected TCRA.