

Paired T-Test and CI: Ag_lacto_T1, Ag_lacto_T2

Descriptive Statistics

Sample	N	Mean	StDev	SE Mean
Ag_lacto_T1	12	62.02	5.19	1.50
Ag_lacto_T2	12	63.16	3.89	1.12

Estimation for Paired Difference

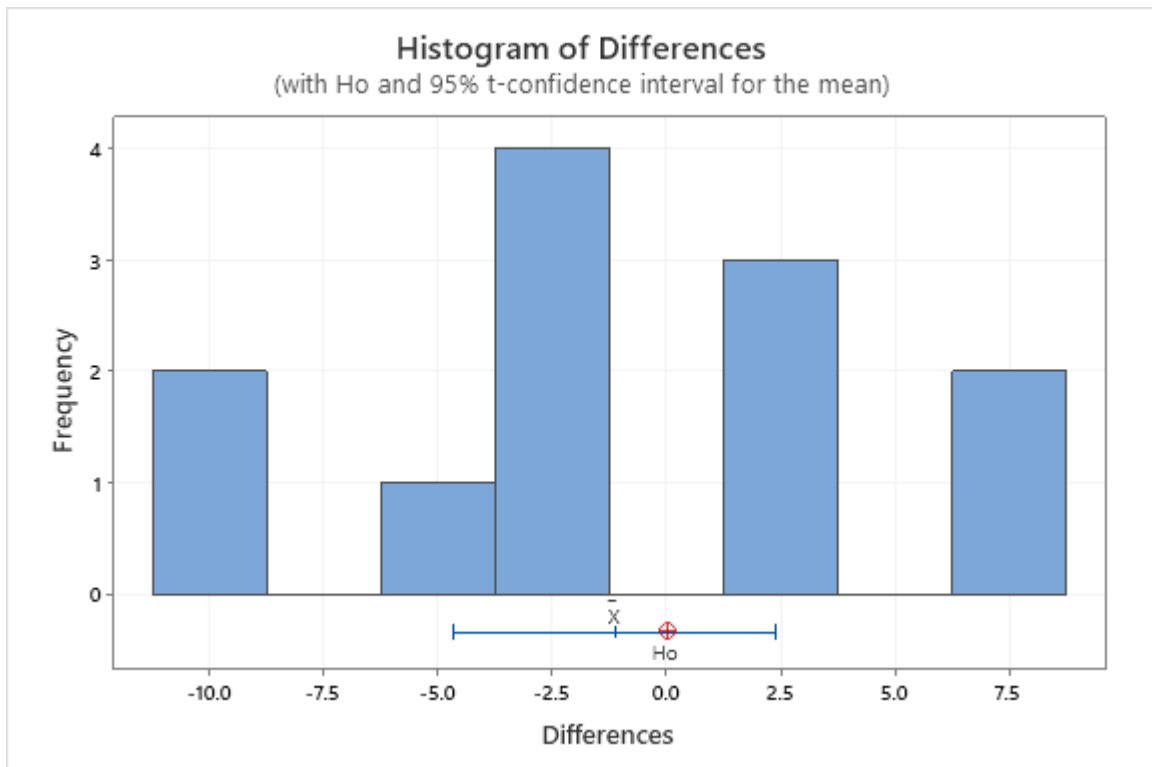
95% CI for				
Mean	StDev	SE Mean	$\mu_{\text{difference}}$	
-1.14	5.57	1.61	(-4.68, 2.40)	

$\mu_{\text{difference}}$: population mean of (Ag_lacto_T1 - Ag_lacto_T2)

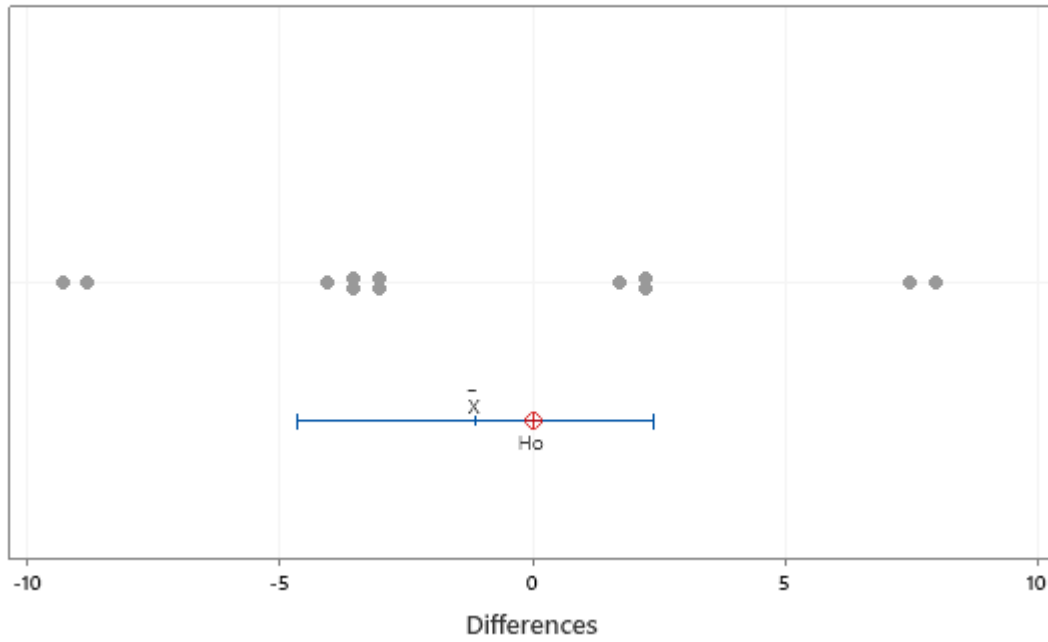
Test

Null hypothesis $H_0: \mu_{\text{difference}} = 0$
 Alternative hypothesis $H_1: \mu_{\text{difference}} \neq 0$

T-Value	P-Value
-0.71	0.494



Individual Value Plot of Differences
(with H_0 and 95% t-confidence interval for the mean)



Boxplot of Differences
(with H_0 and 95% t-confidence interval for the mean)

