

Paired T-Test and CI: Ag_strept_T1, Ag_strepto_T2

Descriptive Statistics

Sample	N	Mean	StDev	SE Mean
Ag_strept_T1	12	27.60	2.00	0.58
Ag_strepto_T2	12	24.08	6.89	1.99

Estimation for Paired Difference

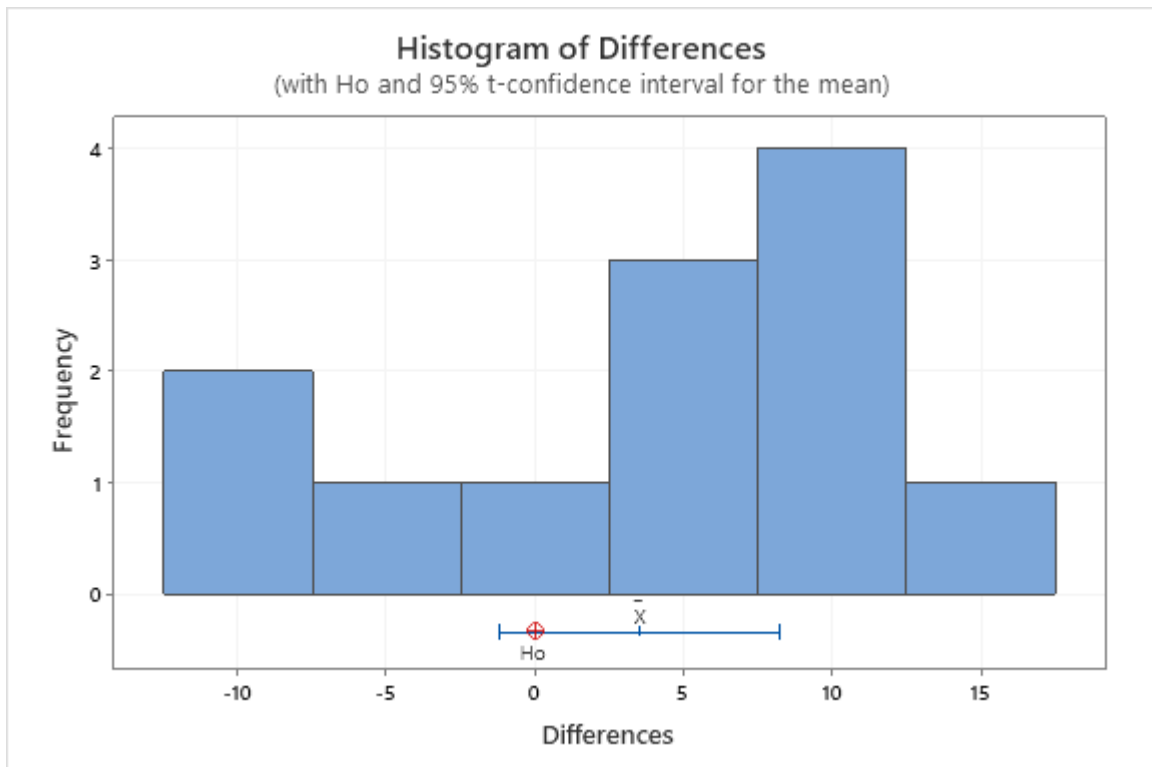
95% CI for				
Mean	StDev	SE Mean	$\mu_{\text{difference}}$	
3.52	7.42	2.14	(-1.19, 8.24)	

$\mu_{\text{difference}}$: population mean of (Ag_strept_T1 - Ag_strepto_T2)

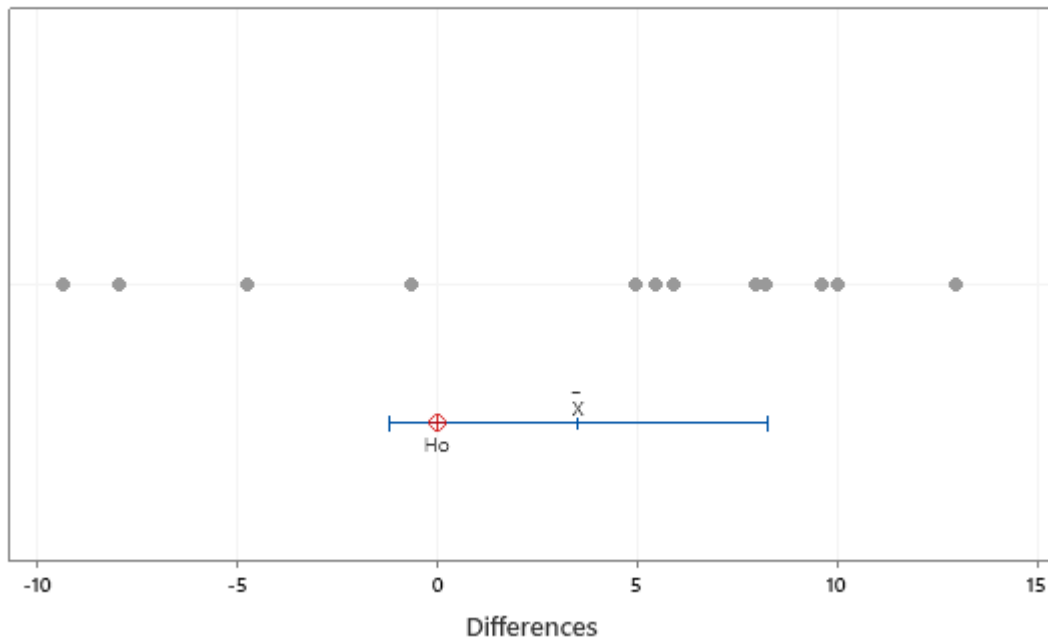
Test

Null hypothesis	$H_0: \mu_{\text{difference}} = 0$
Alternative hypothesis	$H_1: \mu_{\text{difference}} \neq 0$

T-Value	P-Value
1.64	0.128



Individual Value Plot of Differences
(with H_0 and 95% t-confidence interval for the mean)



Boxplot of Differences
(with H_0 and 95% t-confidence interval for the mean)

