

DM

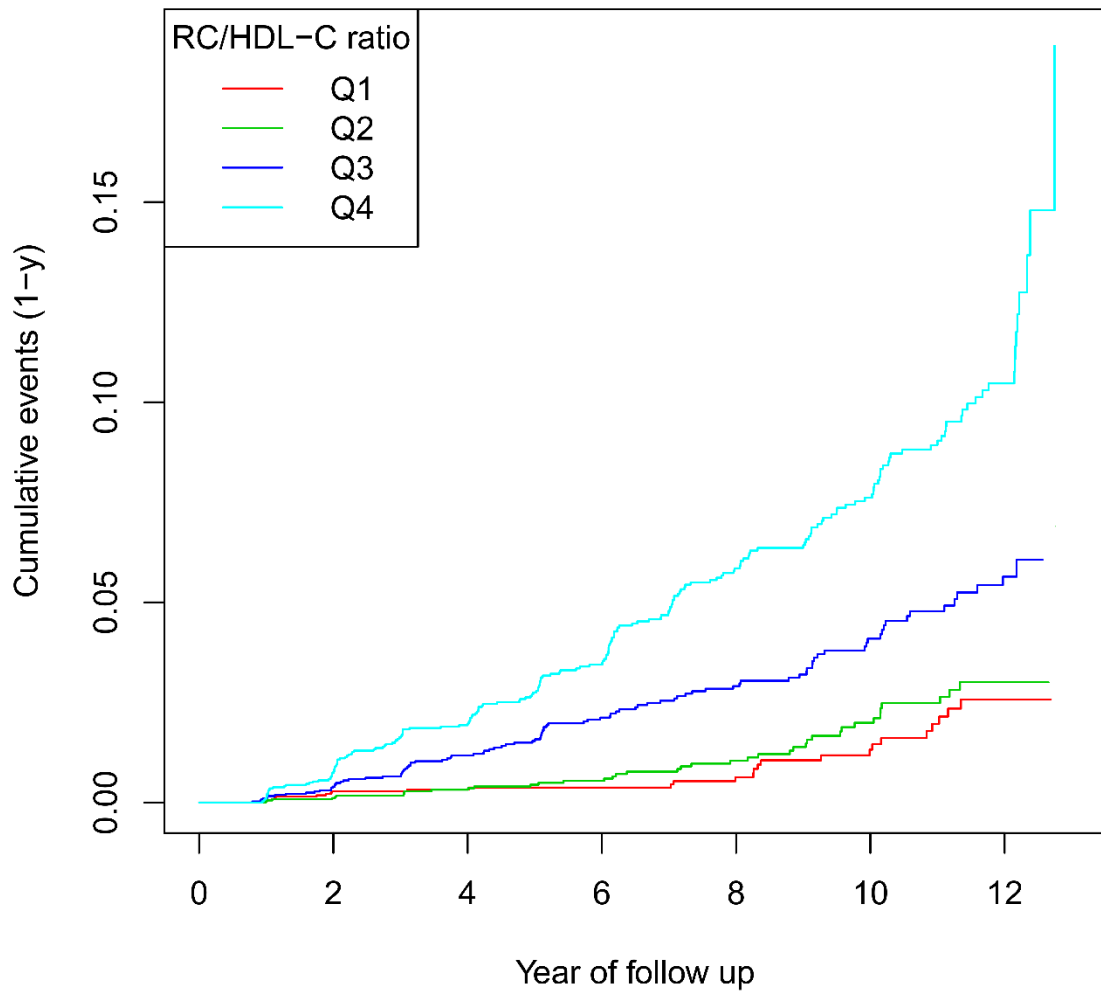


Figure S1: Proportional hazards assumption checking.

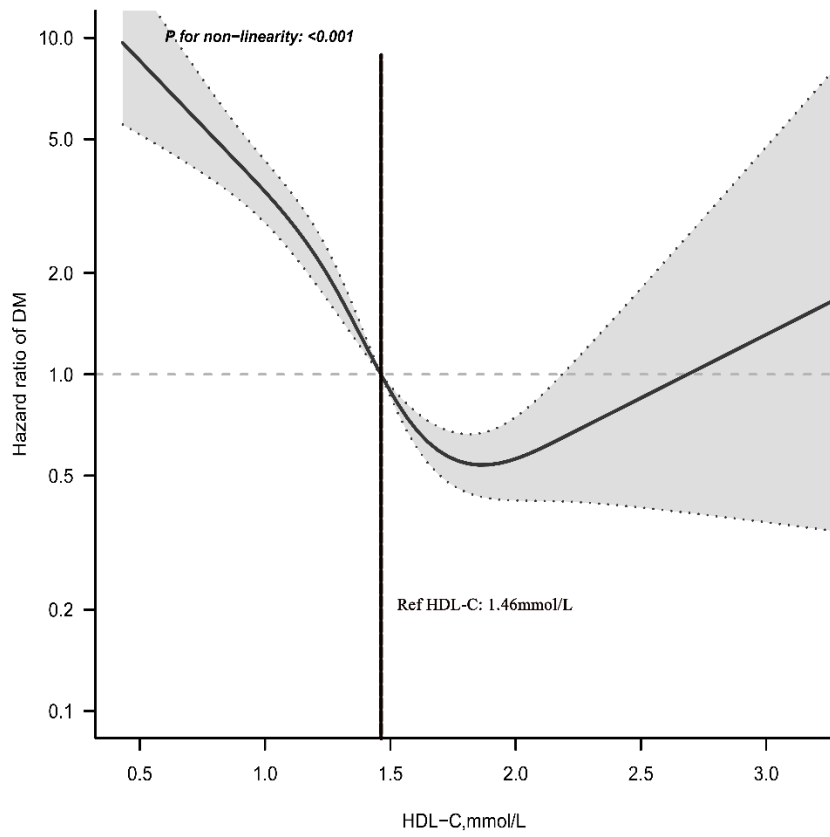


Figure S2(A): RCS evaluates the best threshold of HDL-C for predicting future diabetes risk.

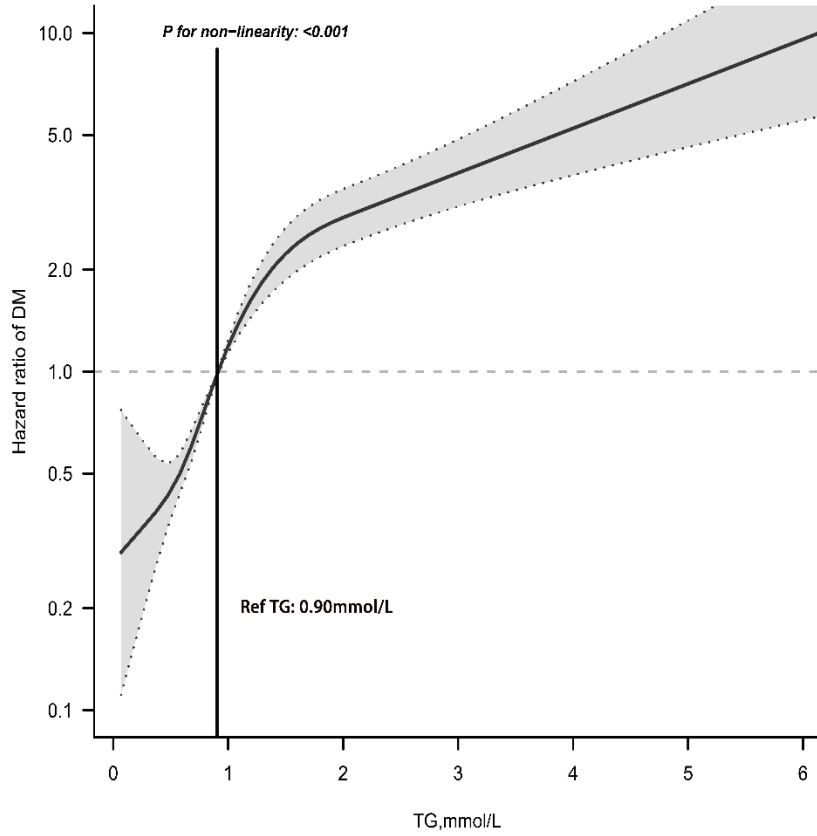


Figure S2(B): RCS evaluates the best threshold of TG for predicting future diabetes risk.

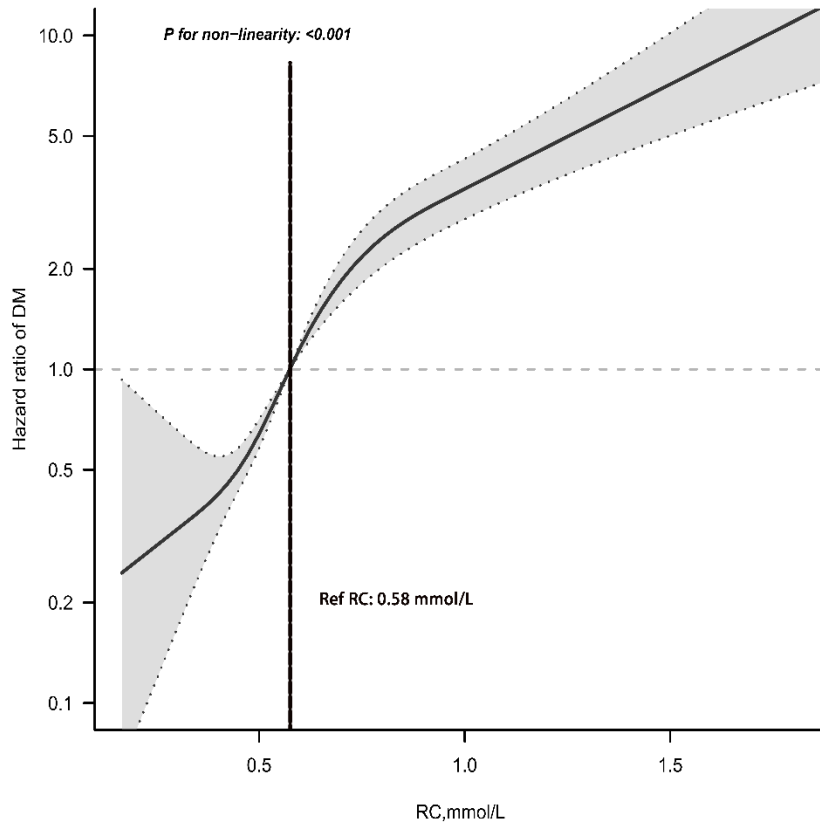


Figure S2(C): RCS evaluates the best threshold of RC for predicting future diabetes risk.

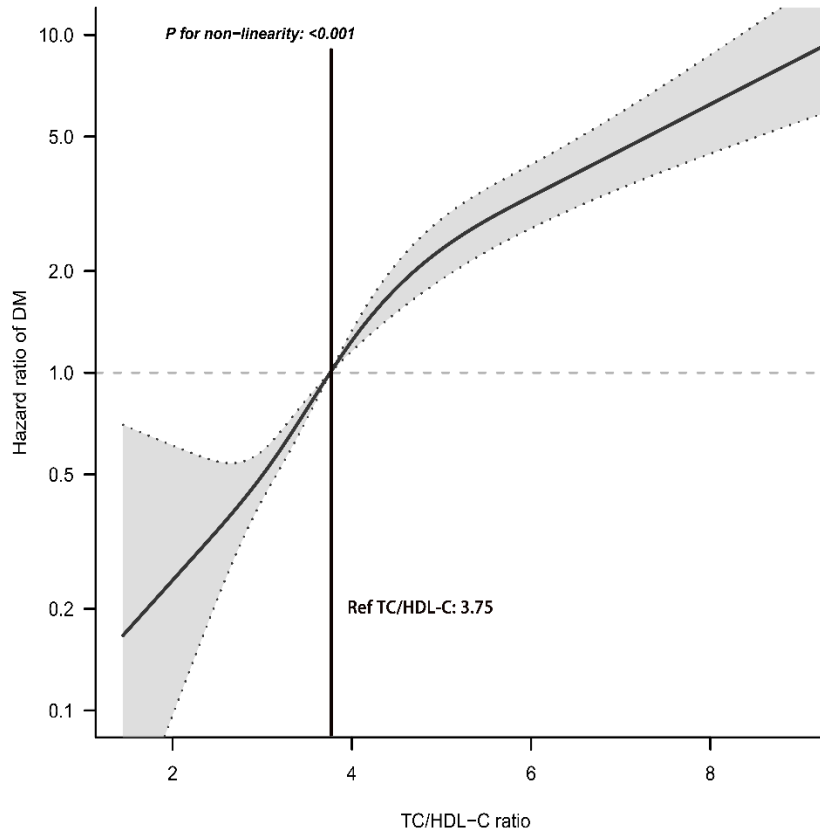


Figure S2(D): RCS evaluates the best threshold of TC/HDL-C ratio for predicting future diabetes risk.

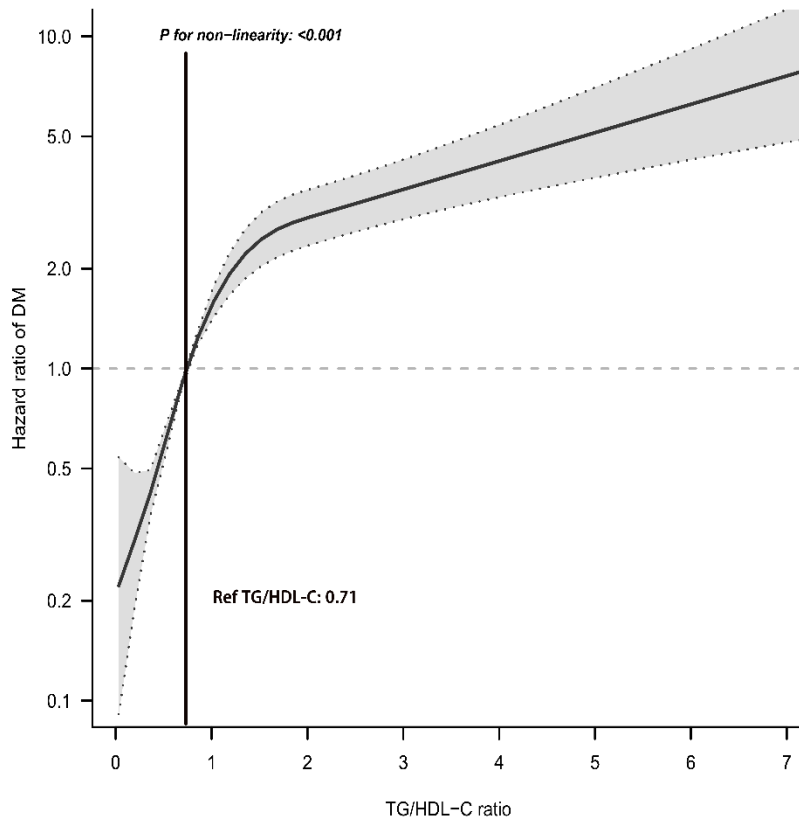


Figure S2(E): RCS evaluates the best threshold of TG/HDL-C ratio for predicting future diabetes risk.

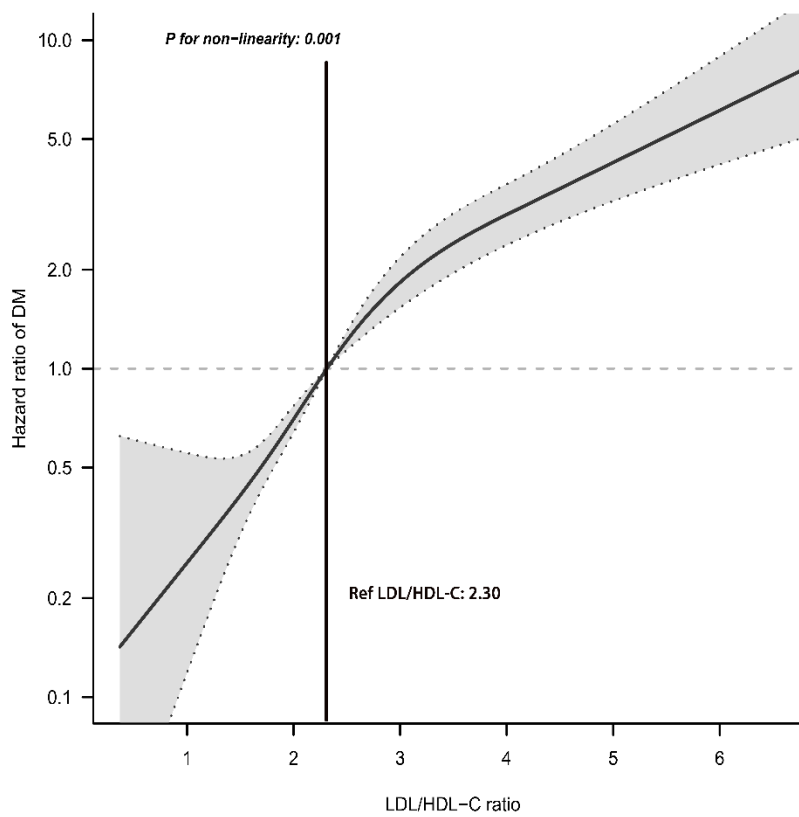


Figure S2(F): RCS evaluates the best threshold of LDL/HDL-C ratio for predicting future diabetes risk.

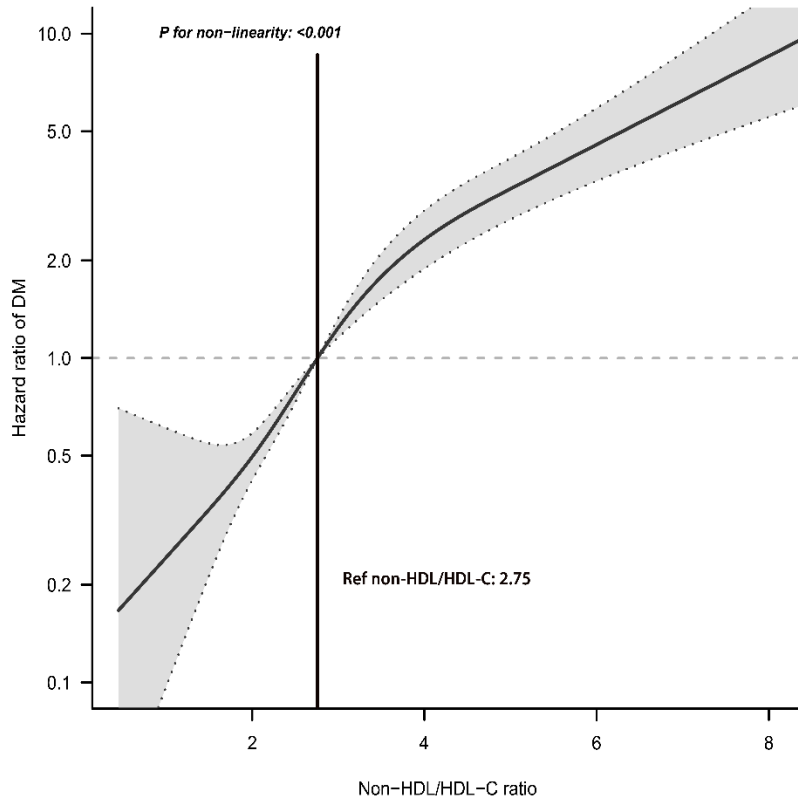


Figure S2(G): RCS evaluates the best threshold of non-HDL/HDL-C ratio for predicting future diabetes risk.

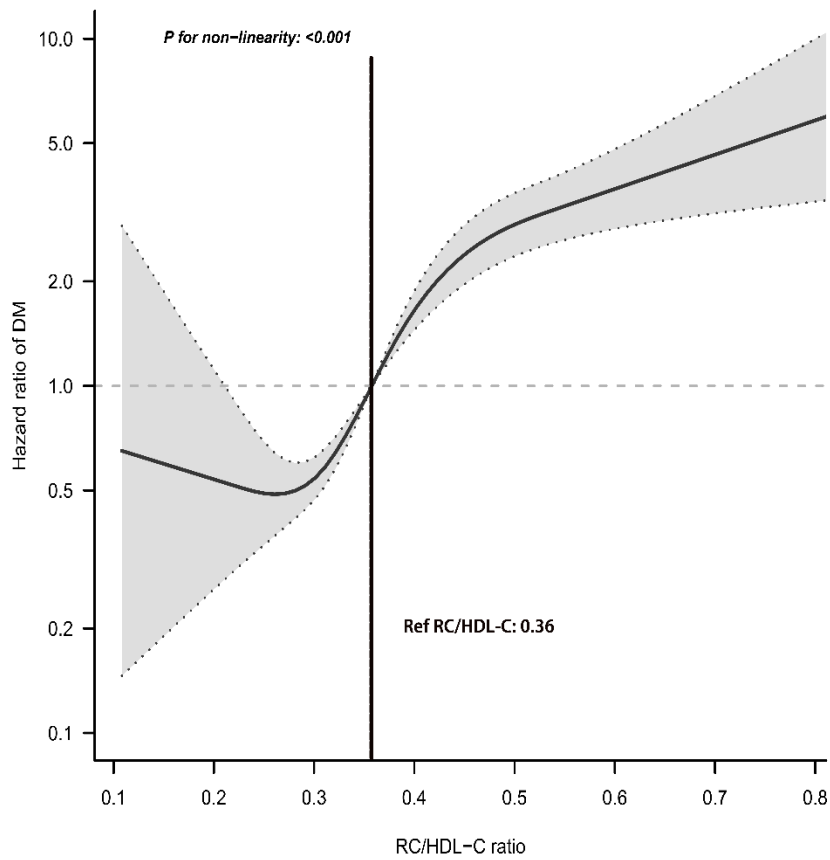


Figure S2(H): RCS evaluates the best threshold of RC/HDL-C ratio for predicting future diabetes risk.