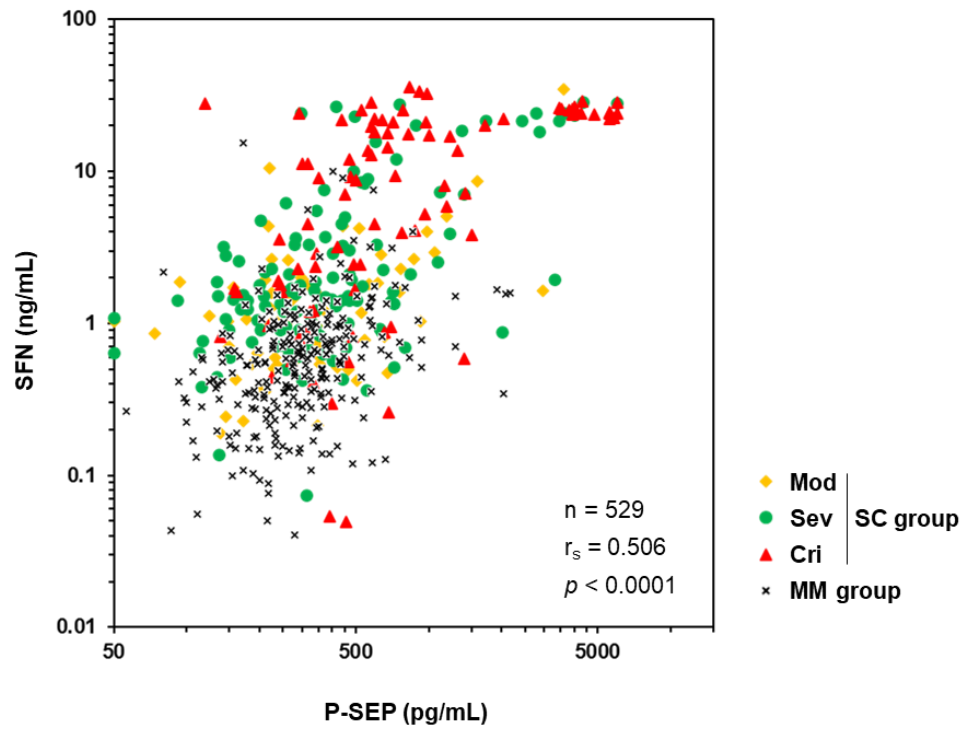


Supplementary materials

Supplementary Table 1. Reference values and serum levels of biomarkers analyzed in this study.

Biomarker	Unit	Reference value ^{#1}	Stage	Concentration, mean \pm SD, [n]					
				MM group		SC group			
				Mild (All)	Moderate (All)	Moderate (1st day)	Severe (1st day)	Critical (1st day)	Mild (recovery)
cohort_1	SFN	ng/mL	0.9	0.5 \pm 0.2 [14]	1.1 \pm 0.5 [18]	1.4 \pm 1.0 [13]	5.9 \pm 9.1 [18]	7.3 \pm 7.7 [7]	0.8 \pm 0.2 [7]
	P-SEP	pg/mL	323	183 \pm 70 [14]	377 \pm 308 [18]	675 \pm 735 [13]	935 \pm 957 [18]	1284 \pm 1947 [7]	163 \pm 50 [7]
	KAL	μ g/mL	6.0	12.1 \pm 3.3 [14]	7.7 \pm 2.9 [18]	8.2 \pm 2.1 [13]	6.0 \pm 2.2 [18]	5.1 \pm 2.1 [7]	15.4 \pm 3.1 [7]
	KL-6	U/mL	378	256 \pm 61 [14]	224 \pm 78 [17]	280 \pm 210 [13]	281 \pm 217 [18]	409 \pm 467 [7]	589 \pm 323 [7]
	SP-D	ng/mL	144	65 \pm 39 [14]	36 \pm 35 [15]	67 \pm 129 [8]	47 \pm 55 [16]	223 \pm 227 [7]	145 \pm 73 [7]
	S/F ratio	-	-	467 \pm 4 [14]	460 \pm 8 [18]	449 \pm 16 [12]	327 \pm 58 [18]	157 \pm 39 [7]	458 \pm 6 [7]
cohort_2	SFN	ng/mL	-	0.6 \pm 0.8 [61]	1.0 \pm 1.7 [158]	2.4 \pm 2.0 [6]	4.6 \pm 6.0 [13]	13.3 \pm 10.5 [4]	3.0 \pm 3.0 [4]
	P-SEP	pg/mL	-	283 \pm 138 [60]	396 \pm 322 [158]	653 \pm 334 [6]	621 \pm 409 [13]	802 \pm 137 [4]	227 \pm 32 [4]
	S/F ratio	-	-	466 \pm 7 [61]	462 \pm 7 [156]	447 \pm 24 [6]	354 \pm 40 [6]	203 \pm 67 [3]	459 \pm 7 [4]

Serum concentrations in each stage of COVID-19 severity for the MM and SC groups are indicated. For the MM group, mean concentration \pm SD in all samples taken during hospitalization are shown. For the SC group, values in samples taken on the first day of indicated stages are shown. ^{#1}, For the reference value of each biomarker, we calculated the upper (SFN, P-SEP, KL-6, SP-D) or lower (KAL) values of the mean concentration \pm 2 SD values of samples at mild stage in the MM group.



Supplementary Figure 1. Correlation of serum SFN and P-SEP levels. The two-dimensional scatter graph shows serum levels of SFN and P-SEP in the MM group samples, and all samples taken at the moderate (Mod), severe (Sev) and critical (Cri) stages in the SC group. The values of the correlation coefficients r_s and p were given by Spearman's correlation analysis.