



# Full wwPDB EM Validation Report ⓘ

Dec 23, 2021 – 12:19 PM JST

PDB ID : 7WAZ  
EMDB ID : EMD-32390  
Title : PlmCasX-sgRNAv1-dsDNA ternary complex at its loading state  
Deposited on : 2021-12-15  
Resolution : 3.40 Å (reported)

This is a Full wwPDB EM Validation Report.

This report is produced by the wwPDB biocuration pipeline after annotation of the structure.

We welcome your comments at [validation@mail.wwpdb.org](mailto:validation@mail.wwpdb.org)

A user guide is available at

<https://www.wwpdb.org/validation/2017/EMValidationReportHelp>

with specific help available everywhere you see the ⓘ symbol.

---

The following versions of software and data (see [references ⓘ](#)) were used in the production of this report:

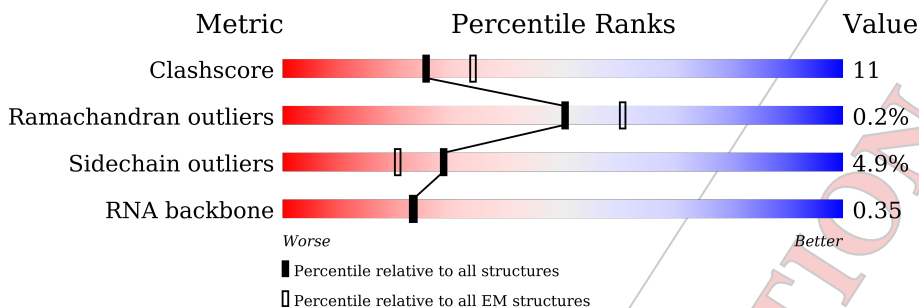
EMDB validation analysis : 0.0.0.dev97  
MolProbity : 4.02b-467  
Percentile statistics : 20191225.v01 (using entries in the PDB archive December 25th 2019)  
Ideal geometry (proteins) : Engh & Huber (2001)  
Ideal geometry (DNA, RNA) : Parkinson et al. (1996)  
Validation Pipeline (wwPDB-VP) : 2.25

# 1 Overall quality at a glance i

The following experimental techniques were used to determine the structure:  
*ELECTRON MICROSCOPY*

The reported resolution of this entry is 3.40 Å.

Percentile scores (ranging between 0-100) for global validation metrics of the entry are shown in the following graphic. The table shows the number of entries on which the scores are based.



Metric	Whole archive (#Entries)	EM structures (#Entries)
Clashscore	158937	4297
Ramachandran outliers	154571	4023
Sidechain outliers	154315	3826
RNA backbone	4643	859

The table below summarises the geometric issues observed across the polymeric chains and their fit to the map. The red, orange, yellow and green segments of the bar indicate the fraction of residues that contain outliers for  $\geq 3$ , 2, 1 and 0 types of geometric quality criteria respectively. A grey segment represents the fraction of residues that are not modelled. The numeric value for each fraction is indicated below the corresponding segment, with a dot representing fractions  $\leq 5\%$ . The upper red bar (where present) indicates the fraction of residues that have poor fit to the EM map (all-atom inclusion  $< 40\%$ ). The numeric value is given above the bar.

Mol	Chain	Length	Quality of chain
1	A	978	
2	C	40	
3	D	122	
4	B	40	

## 2 Entry composition i

There are 4 unique types of molecules in this entry. The entry contains 11034 atoms, of which 0 are hydrogens and 0 are deuteriums.

In the tables below, the AltConf column contains the number of residues with at least one atom in alternate conformation and the Trace column contains the number of residues modelled with at most 2 atoms.

- Molecule 1 is a protein called dPlmCasX.

Mol	Chain	Residues	Atoms					AltConf	Trace
			Total	C	N	O	S		
1	A	952	7729	4918	1382	1401	28	0	0

There are 3 discrepancies between the modelled and reference sequences:

Chain	Residue	Modelled	Actual	Comment	Reference
A	659	ALA	ASP	engineered mutation	UNP A0A1G3BXR9
A	756	ALA	GLU	engineered mutation	UNP A0A1G3BXR9
A	922	ALA	ASP	engineered mutation	UNP A0A1G3BXR9

- Molecule 2 is a DNA chain called NTS-DNA.

Mol	Chain	Residues	Atoms					AltConf	Trace
			Total	C	N	O	P		
2	C	12	245	117	42	74	12	0	0

- Molecule 3 is a RNA chain called RNA (115-MER).

Mol	Chain	Residues	Atoms					AltConf	Trace
			Total	C	N	O	P		
3	D	115	2446	1095	437	799	115	0	0

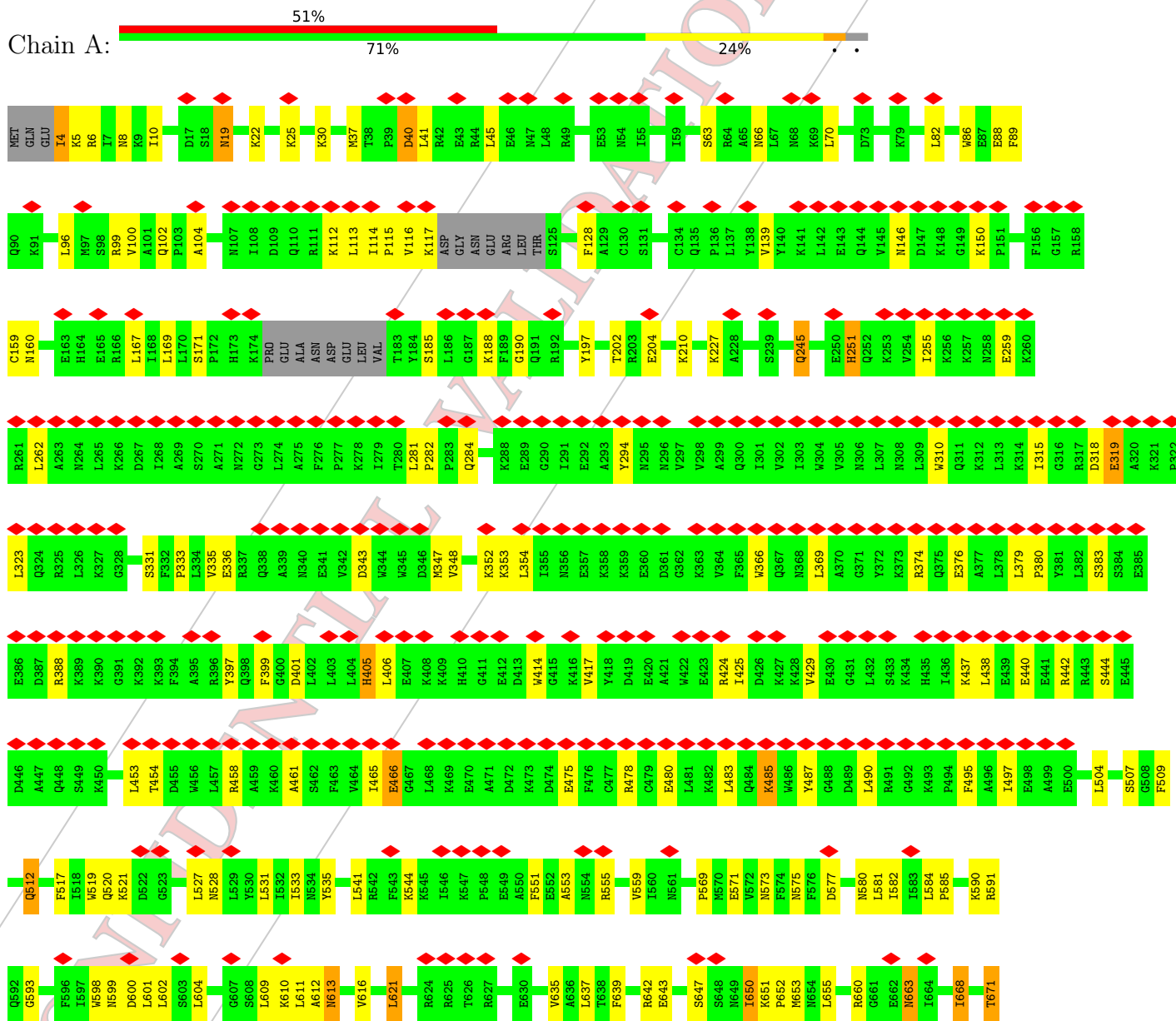
- Molecule 4 is a DNA chain called TS-DNA.

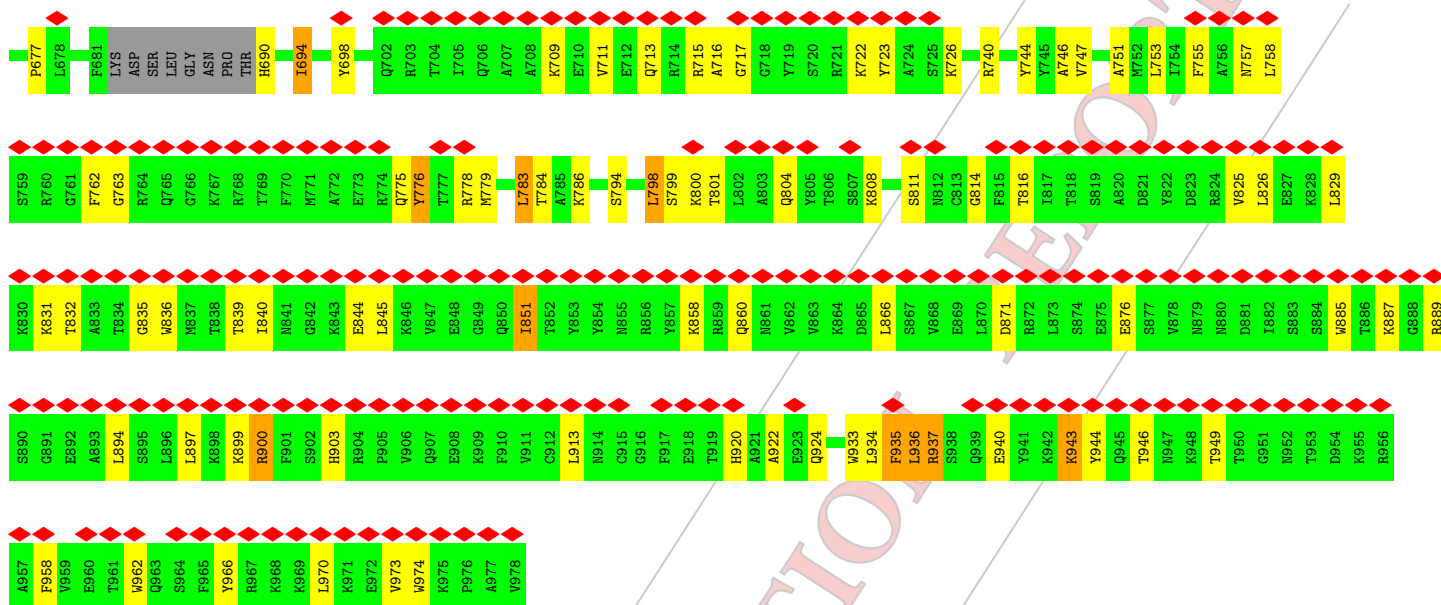
Mol	Chain	Residues	Atoms					AltConf	Trace
			Total	C	N	O	P		
4	B	30	614	294	105	185	30	0	0

### 3 Residue-property plots

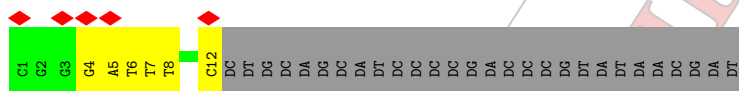
These plots are drawn for all protein, RNA, DNA and oligosaccharide chains in the entry. The first graphic for a chain summarises the proportions of the various outlier classes displayed in the second graphic. The second graphic shows the sequence view annotated by issues in geometry and atom inclusion in map density. Residues are color-coded according to the number of geometric quality criteria for which they contain at least one outlier: green = 0, yellow = 1, orange = 2 and red = 3 or more. A red diamond above a residue indicates a poor fit to the EM map for this residue (all-atom inclusion < 40%). Stretches of 2 or more consecutive residues without any outlier are shown as a green connector. Residues present in the sample, but not in the model, are shown in grey.

- Molecule 1: dPlmCasX





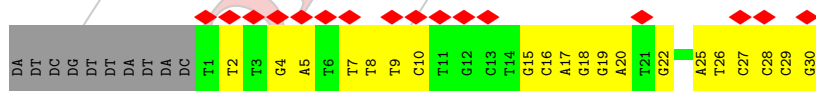
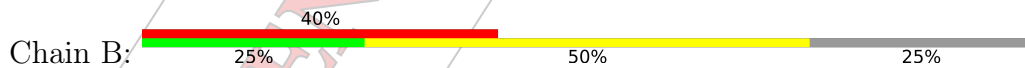
• Molecule 2: NTS-DNA



• Molecule 3: RNA (115-MER)



• Molecule 4: TS-DNA



## 4 Experimental information

Property	Value	Source
EM reconstruction method	SINGLE PARTICLE	Depositor
Imposed symmetry	POINT, Not provided	
Number of particles used	502777	Depositor
Resolution determination method	FSC 0.143 CUT-OFF	Depositor
CTF correction method	PHASE FLIPPING AND AMPLITUDE CORRECTION	Depositor
Microscope	FEI TITAN KRIOS	Depositor
Voltage (kV)	300	Depositor
Electron dose ( $e^-/\text{\AA}^2$ )	50	Depositor
Minimum defocus (nm)	500	Depositor
Maximum defocus (nm)	3000	Depositor
Magnification	Not provided	
Image detector	GATAN K2 SUMMIT (4k x 4k)	Depositor
Maximum map value	1.675	Depositor
Minimum map value	-0.963	Depositor
Average map value	-0.001	Depositor
Map value standard deviation	0.046	Depositor
Recommended contour level	0.29	Depositor
Map size (Å)	240.64, 240.64, 240.64	wwPDB
Map dimensions	256, 256, 256	wwPDB
Map angles (°)	90.0, 90.0, 90.0	wwPDB
Pixel spacing (Å)	0.94, 0.94, 0.94	Depositor

CONFIDENTIAL

## 5 Model quality [i](#)

### 5.1 Standard geometry [i](#)

The Z score for a bond length (or angle) is the number of standard deviations the observed value is removed from the expected value. A bond length (or angle) with  $|Z| > 5$  is considered an outlier worth inspection. RMSZ is the root-mean-square of all Z scores of the bond lengths (or angles).

Mol	Chain	Bond lengths		Bond angles	
		RMSZ	# Z  >5	RMSZ	# Z  >5
1	A	0.24	0/7884	0.47	0/10603
2	C	0.70	0/273	1.05	0/419
3	D	0.24	0/2734	0.91	5/4254 (0.1%)
4	B	0.59	0/686	0.99	0/1057
All	All	0.29	0/11577	0.67	5/16333 (0.0%)

There are no bond length outliers.

All (5) bond angle outliers are listed below:

Mol	Chain	Res	Type	Atoms	Z	Observed(°)	Ideal(°)
3	D	19	C	N1-C2-O2	7.97	123.68	118.90
3	D	19	C	C2-N1-C1	7.26	126.79	118.80
3	D	19	C	N3-C2-O2	-6.25	117.52	121.90
3	D	19	C	C6-N1-C1	-5.15	114.62	120.80
3	D	33	C	N1-C2-O2	5.07	121.94	118.90

There are no chirality outliers.

There are no planarity outliers.

### 5.2 Too-close contacts [i](#)

In the following table, the Non-H and H(model) columns list the number of non-hydrogen atoms and hydrogen atoms in the chain respectively. The H(added) column lists the number of hydrogen atoms added and optimized by MolProbity. The Clashes column lists the number of clashes within the asymmetric unit, whereas Symm-Clashes lists symmetry-related clashes.

Mol	Chain	Non-H	H(model)	H(added)	Clashes	Symm-Clashes
1	A	7729	0	7874	161	0
2	C	245	0	137	4	0
3	D	2446	0	1239	69	0
4	B	614	0	342	26	0

*Continued on next page...*

Continued from previous page...

Mol	Chain	Non-H	H(model)	H(added)	Clashes	Symm-Clashes
All	All	11034	0	9592	231	0

The all-atom clashscore is defined as the number of clashes found per 1000 atoms (including hydrogen atoms). The all-atom clashscore for this structure is 11.

All (231) close contacts within the same asymmetric unit are listed below, sorted by their clash magnitude.

Atom-1	Atom-2	Interatomic distance (Å)	Clash overlap (Å)
4:B:25:DA:H2''	4:B:26:DT:H5''	1.68	0.75
1:A:531:LEU:HB3	1:A:584:LEU:HB2	1.68	0.75
1:A:461:ALA:HB1	1:A:483:LEU:HD13	1.68	0.74
1:A:826:LEU:HD22	1:A:894:LEU:HB2	1.68	0.74
1:A:533:ILE:HB	1:A:582:ILE:HB	1.70	0.72
1:A:726:LYS:HD2	3:D:1:G:H5'	1.71	0.71
3:D:95:C:H2'	3:D:96:A:C8	2.28	0.68
3:D:111:C:HO2'	3:D:112:A:H8	1.40	0.68
1:A:722:LYS:HB2	3:D:1:G:H4'	1.75	0.67
1:A:660:ARG:HH11	1:A:776:TYR:HB3	1.58	0.67
1:A:836:TRP:NE1	1:A:871:ASP:OD1	2.24	0.66
3:D:114:A:N6	4:B:9:DT:C2	2.64	0.65
1:A:713:GLN:O	1:A:717:GLY:N	2.30	0.65
1:A:70:LEU:HD21	1:A:535:TYR:HD2	1.62	0.64
1:A:475:GLU:OE1	1:A:478:ARG:NH2	2.30	0.64
1:A:113:LEU:HG	1:A:114:ILE:HG12	1.78	0.64
1:A:414:TRP:HA	1:A:417:VAL:HB	1.80	0.64
1:A:840:ILE:HG22	1:A:845:LEU:HD11	1.80	0.64
3:D:37:C:H2'	3:D:38:G:C8	2.33	0.63
1:A:171:SER:OG	1:A:185:SER:OG	2.16	0.63
3:D:114:A:O2'	3:D:115:A:O5'	2.17	0.63
3:D:115:A:H3'	3:D:116:A:H5''	1.80	0.63
1:A:30:LYS:HG3	3:D:103:U:H5'	1.79	0.62
1:A:775:GLN:HA	1:A:778:ARG:HB2	1.80	0.62
1:A:559:VAL:HG12	1:A:569:PRO:HB3	1.82	0.61
1:A:811:SER:OG	1:A:924:GLN:NE2	2.32	0.61
1:A:559:VAL:HA	1:A:569:PRO:HA	1.82	0.61
1:A:784:THR:HG23	1:A:794:SER:HB2	1.84	0.60
1:A:831:LYS:HA	1:A:836:TRP:HA	1.83	0.60
1:A:88:GLU:OE2	1:A:99:ARG:NH2	2.35	0.60
3:D:105:C:O2	4:B:19:DG:N2	2.34	0.60
1:A:8:ASN:OD1	1:A:591:ARG:NH2	2.35	0.59
1:A:839:THR:HG22	1:A:844:GLU:HA	1.85	0.58

Continued on next page...



Continued from previous page...

Atom-1	Atom-2	Interatomic distance (Å)	Clash overlap (Å)
1:A:388:ARG:NH1	1:A:401:ASP:OD2	2.34	0.58
4:B:9:DT:H2'	4:B:10:DC:C5	2.39	0.57
3:D:83:A:H3'	3:D:84:U:C4	2.39	0.57
4:B:27:DC:N3	4:B:28:DC:N4	2.51	0.57
1:A:858:LYS:HB3	1:A:860:GLN:HG2	1.87	0.57
3:D:114:A:C6	4:B:9:DT:N3	2.73	0.56
3:D:111:C:O2'	3:D:112:A:H8	1.87	0.56
1:A:746:ALA:HA	1:A:751:ALA:HB3	1.88	0.56
4:B:8:DT:H2''	4:B:9:DT:H5''	1.88	0.56
1:A:866:LEU:HD22	1:A:900:ARG:HG3	1.86	0.55
3:D:3:C:H2'	3:D:4:G:C8	2.41	0.55
1:A:262:LEU:HB2	1:A:323:LEU:HD21	1.88	0.55
1:A:775:GLN:O	1:A:779:MET:N	2.35	0.55
1:A:66:ASN:ND2	1:A:580:ASN:O	2.39	0.55
1:A:757:ASN:HA	1:A:800:LYS:HD3	1.89	0.55
3:D:46:C:H2'	3:D:47:G:C8	2.42	0.55
1:A:438:LEU:O	1:A:442:ARG:NH1	2.40	0.54
1:A:527:LEU:O	3:D:15:A:N6	2.38	0.54
1:A:655:LEU:HB2	1:A:671:THR:HG23	1.88	0.54
1:A:599:ASN:OD1	1:A:602:LEU:N	2.40	0.54
4:B:15:DG:H5'	4:B:15:DG:H8	1.72	0.54
1:A:609:LEU:HD11	1:A:639:PHE:HB3	1.88	0.54
1:A:783:LEU:HD23	1:A:798:LEU:HD21	1.90	0.53
2:C:7:DT:H2'	2:C:8:DT:H71	1.90	0.53
1:A:716:ALA:HB2	3:D:50:U:O2	2.08	0.53
1:A:851:ILE:HD12	1:A:899:LYS:HD2	1.89	0.53
1:A:281:LEU:HB3	1:A:294:TYR:HE1	1.74	0.53
1:A:663:ASN:OD1	1:A:663:ASN:N	2.41	0.53
1:A:887:LYS:HB3	3:D:121:A:C6	2.44	0.52
1:A:946:THR:O	1:A:949:THR:OG1	2.23	0.52
3:D:82:G:H2'	3:D:83:A:C8	2.44	0.52
1:A:970:LEU:HA	1:A:974:TRP:HB2	1.92	0.52
1:A:369:LEU:HD13	1:A:374:ARG:HA	1.92	0.52
1:A:319:GLU:OE1	3:D:118:U:N3	2.43	0.52
1:A:347:MET:HB2	1:A:490:LEU:HD21	1.91	0.52
1:A:519:TRP:HB2	1:A:527:LEU:HB3	1.91	0.52
1:A:763:GLY:O	3:D:112:A:O2'	2.27	0.52
1:A:647:SER:HA	1:A:650:ILE:HD11	1.91	0.52
1:A:677:PRO:HB2	1:A:690:HIS:CE1	2.44	0.52
1:A:251:HIS:HB3	1:A:284:GLN:HG3	1.92	0.52
1:A:753:LEU:HB2	1:A:798:LEU:HD22	1.92	0.52

Continued on next page...

Continued from previous page...

Atom-1	Atom-2	Interatomic distance (Å)	Clash overlap (Å)
1:A:63:SER:HB3	1:A:582:ILE:HG23	1.91	0.52
1:A:333:PRO:HB3	3:D:107:G:H4'	1.93	0.51
1:A:112:LYS:HE3	1:A:115:PRO:HG3	1.92	0.51
1:A:816:THR:HG21	1:A:962:TRP:NE1	2.25	0.51
1:A:86:TRP:CD1	1:A:335:VAL:HG21	2.45	0.51
1:A:10:ILE:HG23	1:A:747:VAL:HG21	1.93	0.50
1:A:202:THR:OG1	1:A:204:GLU:OE1	2.29	0.50
1:A:635:VAL:HG12	1:A:637:LEU:HG	1.94	0.50
1:A:504:LEU:HD23	1:A:616:VAL:HG21	1.94	0.50
3:D:36:G:H2'	3:D:36:G:N3	2.27	0.50
1:A:10:ILE:HD11	1:A:744:TYR:HD1	1.75	0.50
1:A:610:LYS:HB3	1:A:642:ARG:HG2	1.94	0.49
3:D:45:U:H2'	3:D:46:C:C6	2.47	0.49
1:A:383:SER:HB3	1:A:397:TYR:CG	2.47	0.49
1:A:709:LYS:HE2	1:A:723:TYR:HB3	1.94	0.49
1:A:429:VAL:HG13	1:A:453:LEU:HD11	1.94	0.49
3:D:47:G:H2'	3:D:48:U:C6	2.48	0.49
1:A:281:LEU:HD21	1:A:323:LEU:HD13	1.93	0.49
1:A:282:PRO:HD2	1:A:294:TYR:HD1	1.78	0.49
1:A:366:TRP:NE1	1:A:466:GLU:OE2	2.46	0.49
1:A:590:LYS:N	3:D:18:A:OP2	2.46	0.49
1:A:227:LYS:NZ	4:B:22:DG:O6	2.38	0.49
3:D:19:C:H2'	3:D:19:C:O2	2.13	0.49
3:D:87:G:H2'	3:D:88:U:C6	2.48	0.49
1:A:376:GLU:HA	1:A:379:LEU:HG	1.95	0.48
1:A:348:VAL:HG12	1:A:352:LYS:HE3	1.94	0.48
3:D:29:A:O2'	3:D:30:G:N7	2.46	0.48
3:D:83:A:O2'	3:D:84:U:OP1	2.25	0.48
3:D:4:G:N1	3:D:26:G:C6	2.82	0.48
3:D:111:C:O2'	3:D:112:A:H5''	2.14	0.48
1:A:202:THR:O	1:A:210:LYS:NZ	2.36	0.48
3:D:24:G:H2'	3:D:25:A:O4'	2.13	0.48
1:A:37:MET:HB3	1:A:585:PRO:HG2	1.96	0.48
1:A:610:LYS:HE2	1:A:612:ALA:HB2	1.94	0.48
1:A:887:LYS:HB3	3:D:121:A:N6	2.28	0.48
3:D:105:C:C2	4:B:19:DG:N2	2.80	0.48
1:A:45:LEU:HD11	3:D:18:A:N3	2.29	0.48
1:A:255:ILE:O	1:A:259:GLU:HG2	2.13	0.48
1:A:651:LYS:NZ	1:A:652:PRO:O	2.34	0.48
1:A:944:TYR:CZ	1:A:958:PHE:HB2	2.49	0.47
1:A:146:ASN:OD1	1:A:150:LYS:N	2.47	0.47

Continued on next page...

Continued from previous page...

Atom-1	Atom-2	Interatomic distance (Å)	Clash overlap (Å)
1:A:811:SER:HG	1:A:924:GLN:NE2	2.12	0.47
3:D:65:U:O4	3:D:87:G:N1	2.47	0.47
4:B:16:DC:H2'	4:B:17:DA:H8	1.79	0.47
1:A:544:LYS:O	1:A:571:GLU:N	2.35	0.47
1:A:575:ASN:ND2	1:A:577:ASP:OD1	2.48	0.47
1:A:935:PHE:CD2	1:A:936:LEU:HD22	2.50	0.47
1:A:424:ARG:HG2	3:D:43:U:N3	2.29	0.47
1:A:825:VAL:HG12	1:A:897:LEU:HD13	1.97	0.47
1:A:940:GLU:O	1:A:943:LYS:HG3	2.13	0.47
3:D:5:C:H2'	3:D:6:G:C4	2.49	0.47
4:B:15:DG:H5'	4:B:15:DG:C8	2.50	0.47
3:D:81:C:H2'	3:D:82:G:C4	2.50	0.47
1:A:715:ARG:NH2	3:D:49:A:OP1	2.47	0.47
1:A:96:LEU:O	1:A:100:VAL:HG23	2.14	0.47
4:B:17:DA:H8	4:B:17:DA:H5''	1.79	0.47
1:A:116:VAL:HB	1:A:139:VAL:HB	1.97	0.46
3:D:89:A:H2'	3:D:90:A:C8	2.50	0.46
1:A:383:SER:HB3	1:A:397:TYR:HB3	1.96	0.46
3:D:6:G:H2'	3:D:7:U:H6	1.80	0.46
1:A:593:GLY:HA3	1:A:598:TRP:CE2	2.50	0.46
1:A:102:GLN:HB2	1:A:190:GLY:N	2.31	0.46
1:A:555:ARG:NH2	1:A:571:GLU:OE2	2.47	0.45
1:A:600:ASP:OD1	3:D:14:C:N4	2.48	0.45
1:A:740:ARG:NH1	3:D:100:A:H4'	2.31	0.45
1:A:40:ASP:OD1	1:A:40:ASP:N	2.36	0.45
1:A:621:LEU:HD23	1:A:621:LEU:HA	1.83	0.45
1:A:829:LEU:HD22	1:A:897:LEU:HD11	1.98	0.45
3:D:9:U:C5	3:D:100:A:N7	2.84	0.45
1:A:783:LEU:HD12	1:A:783:LEU:HA	1.83	0.45
1:A:786:LYS:NZ	3:D:102:G:H5''	2.30	0.45
3:D:105:C:N3	4:B:19:DG:N1	2.63	0.45
1:A:86:TRP:HB2	1:A:335:VAL:HG11	1.98	0.45
3:D:37:C:H2'	3:D:38:G:H8	1.81	0.45
3:D:97:U:H4'	3:D:98:C:C6	2.52	0.45
1:A:25:LYS:HE3	1:A:25:LYS:HB2	1.84	0.45
1:A:440:GLU:HA	1:A:444:SER:O	2.17	0.44
4:B:27:DC:H2''	4:B:28:DC:C6	2.52	0.44
1:A:399:PHE:HE1	1:A:425:ILE:HG13	1.81	0.44
1:A:573:ASN:OD1	1:A:573:ASN:N	2.50	0.44
1:A:424:ARG:HG2	3:D:43:U:C4	2.53	0.44
1:A:159:CYS:SG	1:A:160:ASN:N	2.91	0.44

Continued on next page...

Continued from previous page...

Atom-1	Atom-2	Interatomic distance (Å)	Clash overlap (Å)
1:A:454:THR:HG22	1:A:487:TYR:CD1	2.53	0.44
1:A:70:LEU:HD21	1:A:535:TYR:CD2	2.48	0.44
1:A:169:LEU:HD23	1:A:188:LYS:HB2	2.00	0.44
1:A:4:ILE:HG22	1:A:5:LYS:H	1.81	0.43
1:A:343:ASP:O	1:A:347:MET:HG3	2.17	0.43
1:A:832:THR:N	1:A:835:GLY:O	2.45	0.43
1:A:814:GLY:HA2	1:A:966:TYR:HD2	1.84	0.43
1:A:116:VAL:N	1:A:139:VAL:O	2.52	0.43
2:C:12:DC:H6	2:C:12:DC:H2'	1.66	0.43
3:D:105:C:H2'	3:D:106:U:C6	2.54	0.43
1:A:885:TRP:HB3	1:A:889:ARG:HD2	2.01	0.43
2:C:4:DG:H1'	2:C:5:DA:O4'	2.18	0.43
4:B:15:DG:C4	4:B:16:DC:C5	3.06	0.43
1:A:245:GLN:HE21	1:A:245:GLN:HB3	1.57	0.43
1:A:405:HIS:CD2	1:A:406:LEU:HD22	2.54	0.43
1:A:613:ASN:HB3	4:B:20:DA:H2''	2.01	0.43
1:A:711:VAL:HG12	1:A:715:ARG:HH12	1.81	0.43
1:A:755:PHE:O	1:A:801:THR:N	2.50	0.43
3:D:1:G:H2'	3:D:2:G:C8	2.54	0.43
1:A:22:LYS:HA	1:A:643:GLU:HA	2.00	0.43
1:A:816:THR:HG21	1:A:962:TRP:HE1	1.83	0.43
3:D:93:C:H2'	3:D:94:G:C8	2.54	0.43
3:D:1:G:H2'	3:D:2:G:H8	1.84	0.43
3:D:9:U:C5	3:D:100:A:C8	3.07	0.43
1:A:541:LEU:HB2	1:A:581:LEU:HD11	2.00	0.42
1:A:611:LEU:HD21	1:A:637:LEU:HD22	2.00	0.42
1:A:876:GLU:OE1	1:A:889:ARG:NH1	2.52	0.42
3:D:52:G:H2'	3:D:53:A:C8	2.54	0.42
1:A:520:GLN:O	1:A:527:LEU:HA	2.18	0.42
4:B:2:DT:H5''	4:B:2:DT:H6	1.83	0.42
1:A:353:LYS:HE2	1:A:353:LYS:HB2	1.93	0.42
1:A:973:VAL:HG23	1:A:974:TRP:CD1	2.54	0.42
1:A:82:LEU:HD23	1:A:82:LEU:HA	1.85	0.42
1:A:668:ILE:HD11	1:A:694:ILE:HD11	2.01	0.42
4:B:7:DT:H2''	4:B:8:DT:C4	2.54	0.42
1:A:485:LYS:HB2	1:A:485:LYS:HE2	1.79	0.42
1:A:801:THR:HB	1:A:933:TRP:HD1	1.85	0.42
3:D:114:A:C6	4:B:9:DT:C2	3.08	0.42
2:C:5:DA:H2'	2:C:6:DT:H71	2.01	0.42
1:A:310:TRP:HD1	1:A:315:ILE:O	2.03	0.42
1:A:920:HIS:CE1	1:A:922:ALA:HB3	2.55	0.42

Continued on next page...

Continued from previous page...

Atom-1	Atom-2	Interatomic distance (Å)	Clash overlap (Å)
4:B:29:DC:H2'	4:B:30:DG:C8	2.55	0.42
1:A:465:ILE:HD13	1:A:483:LEU:HD12	2.02	0.41
4:B:4:DG:H2''	4:B:5:DA:H5'	2.02	0.41
4:B:17:DA:H5''	4:B:17:DA:C8	2.55	0.41
1:A:512:GLN:H	1:A:512:GLN:HG3	1.58	0.41
1:A:808:LYS:HG3	1:A:903:HIS:NE2	2.35	0.41
1:A:89:PHE:HB2	1:A:96:LEU:HD22	2.03	0.41
1:A:374:ARG:HD3	1:A:414:TRP:NE1	2.36	0.41
3:D:4:G:N2	3:D:5:C:O2	2.53	0.41
1:A:354:LEU:HD23	1:A:354:LEU:HA	1.88	0.41
3:D:38:G:C6	3:D:47:G:N1	2.89	0.41
1:A:104:ALA:HB3	1:A:167:LEU:HB3	2.02	0.41
1:A:521:LYS:HE2	1:A:551:PHE:CD2	2.55	0.41
1:A:935:PHE:C	1:A:937:ARG:H	2.24	0.41
1:A:6:ARG:NE	3:D:100:A:OP1	2.47	0.41
1:A:458:ARG:HH22	1:A:480:GLU:CD	2.24	0.41
3:D:44:G:H2'	3:D:45:U:H6	1.85	0.41
3:D:114:A:N6	4:B:9:DT:N3	2.69	0.41
1:A:519:TRP:HA	1:A:528:ASN:O	2.21	0.41
1:A:553:ALA:O	1:A:555:ARG:HG2	2.21	0.40
3:D:109:A:H2'	3:D:110:G:C8	2.56	0.40
3:D:109:A:O2'	3:D:110:G:O4'	2.17	0.40
4:B:7:DT:H2''	4:B:8:DT:C5	2.56	0.40
1:A:19:ASN:OD1	1:A:19:ASN:N	2.53	0.40
1:A:610:LYS:HD3	1:A:642:ARG:HD3	2.02	0.40
3:D:96:A:H8	3:D:96:A:O5'	2.04	0.40
3:D:106:U:C2	4:B:18:DG:N2	2.89	0.40
1:A:379:LEU:HB2	1:A:380:PRO:HD3	2.02	0.40
1:A:758:LEU:HD13	1:A:762:PHE:CE2	2.57	0.40
1:A:799:SER:HG	1:A:933:TRP:HZ2	1.69	0.40
3:D:110:G:O5'	3:D:110:G:H8	2.04	0.40
1:A:331:SER:HB3	1:A:336:GLU:HB3	2.03	0.40
1:A:437:LYS:HA	1:A:440:GLU:HG2	2.02	0.40
3:D:90:A:H2'	3:D:91:A:O4'	2.21	0.40

There are no symmetry-related clashes.

## 5.3 Torsion angles [i](#)

### 5.3.1 Protein backbone [i](#)

In the following table, the Percentiles column shows the percent Ramachandran outliers of the chain as a percentile score with respect to all PDB entries followed by that with respect to all EM entries.

The Analysed column shows the number of residues for which the backbone conformation was analysed, and the total number of residues.

Mol	Chain	Analysed	Favoured	Allowed	Outliers	Percentiles
1	A	944/978 (96%)	904 (96%)	38 (4%)	2 (0%)	47 78

All (2) Ramachandran outliers are listed below:

Mol	Chain	Res	Type
1	A	497	ILE
1	A	653	MET

### 5.3.2 Protein sidechains [i](#)

In the following table, the Percentiles column shows the percent sidechain outliers of the chain as a percentile score with respect to all PDB entries followed by that with respect to all EM entries.

The Analysed column shows the number of residues for which the sidechain conformation was analysed, and the total number of residues.

Mol	Chain	Analysed	Rotameric	Outliers	Percentiles
1	A	832/855 (97%)	791 (95%)	41 (5%)	25 55

All (41) residues with a non-rotameric sidechain are listed below:

Mol	Chain	Res	Type
1	A	4	ILE
1	A	19	ASN
1	A	40	ASP
1	A	41	LEU
1	A	117	LYS
1	A	128	PHE
1	A	197	TYR
1	A	245	GLN
1	A	251	HIS

*Continued on next page...*

Continued from previous page...

Mol	Chain	Res	Type
1	A	318	ASP
1	A	319	GLU
1	A	405	HIS
1	A	466	GLU
1	A	485	LYS
1	A	495	PHE
1	A	507	SER
1	A	509	PHE
1	A	512	GLN
1	A	517	PHE
1	A	601	LEU
1	A	604	LEU
1	A	613	ASN
1	A	621	LEU
1	A	650	ILE
1	A	663	ASN
1	A	668	ILE
1	A	671	THR
1	A	694	ILE
1	A	698	TYR
1	A	776	TYR
1	A	783	LEU
1	A	798	LEU
1	A	804	GLN
1	A	851	ILE
1	A	900	ARG
1	A	913	LEU
1	A	934	LEU
1	A	935	PHE
1	A	936	LEU
1	A	937	ARG
1	A	943	LYS

Sometimes sidechains can be flipped to improve hydrogen bonding and reduce clashes. There are no such sidechains identified.

### 5.3.3 RNA

Mol	Chain	Analysed	Backbone Outliers	Pucker Outliers
3	D	113/122 (92%)	46 (40%)	3 (2%)

All (46) RNA backbone outliers are listed below:

Mol	Chain	Res	Type
3	D	2	G
3	D	5	C
3	D	6	G
3	D	9	U
3	D	11	U
3	D	13	C
3	D	14	C
3	D	16	U
3	D	17	U
3	D	18	A
3	D	19	C
3	D	20	U
3	D	32	C
3	D	36	G
3	D	37	C
3	D	40	C
3	D	41	U
3	D	42	A
3	D	43	U
3	D	44	G
3	D	49	A
3	D	51	G
3	D	52	G
3	D	56	A
3	D	57	A
3	D	58	G
3	D	64	A
3	D	65	U
3	D	66	U
3	D	67	U
3	D	81	C
3	D	84	U
3	D	93	C
3	D	97	U
3	D	98	C
3	D	109	A
3	D	111	C
3	D	113	G
3	D	114	A
3	D	115	A
3	D	116	A
3	D	117	A

*Continued on next page...*



Continued from previous page...

Mol	Chain	Res	Type
3	D	118	U
3	D	120	A
3	D	121	A
3	D	122	A

All (3) RNA pucker outliers are listed below:

Mol	Chain	Res	Type
3	D	40	C
3	D	56	A
3	D	83	A

#### 5.4 Non-standard residues in protein, DNA, RNA chains [i](#)

There are no non-standard protein/DNA/RNA residues in this entry.

#### 5.5 Carbohydrates [i](#)

There are no monosaccharides in this entry.

#### 5.6 Ligand geometry [i](#)

There are no ligands in this entry.

#### 5.7 Other polymers [i](#)

There are no such residues in this entry.

#### 5.8 Polymer linkage issues [i](#)

There are no chain breaks in this entry.

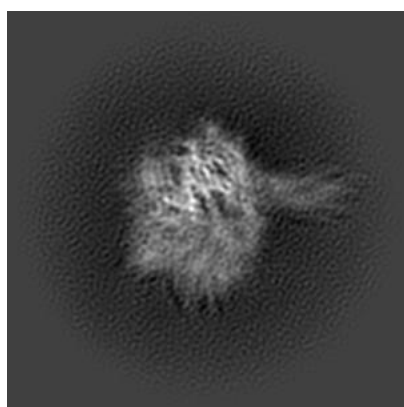
## 6 Map visualisation [i](#)

This section contains visualisations of the EMDB entry EMD-32390. These allow visual inspection of the internal detail of the map and identification of artifacts.

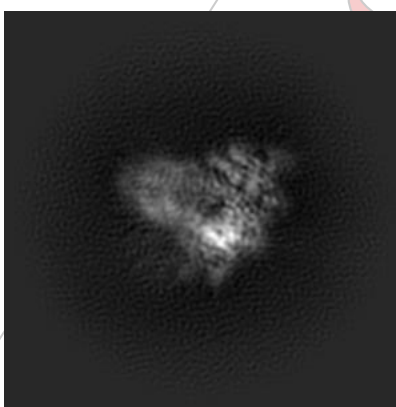
No raw map or half-maps were deposited for this entry and therefore no images, graphs, etc. pertaining to the raw map can be shown.

### 6.1 Orthogonal projections [i](#)

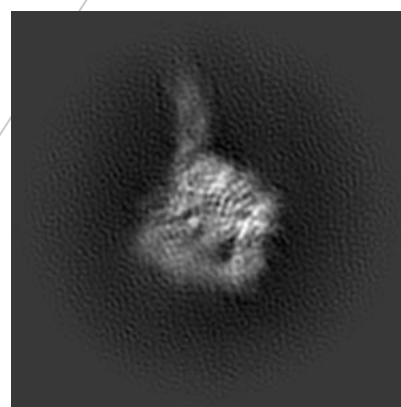
#### 6.1.1 Primary map



X



Y

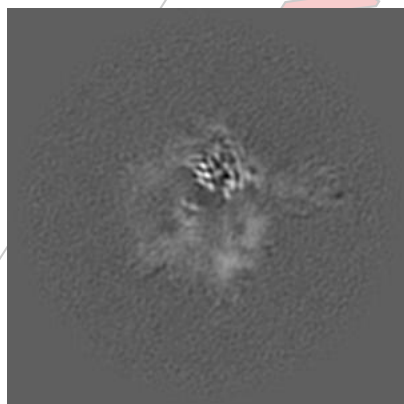


Z

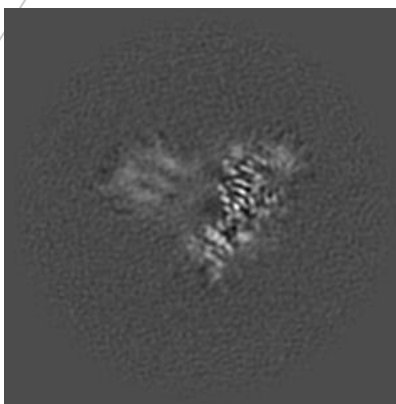
The images above show the map projected in three orthogonal directions.

### 6.2 Central slices [i](#)

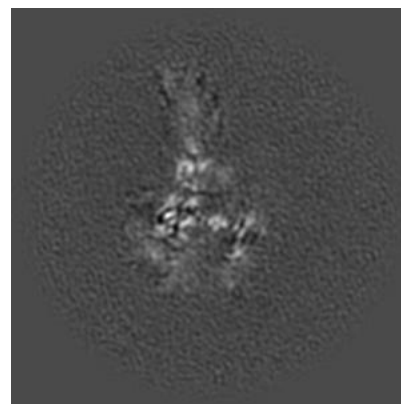
#### 6.2.1 Primary map



X Index: 128



Y Index: 128

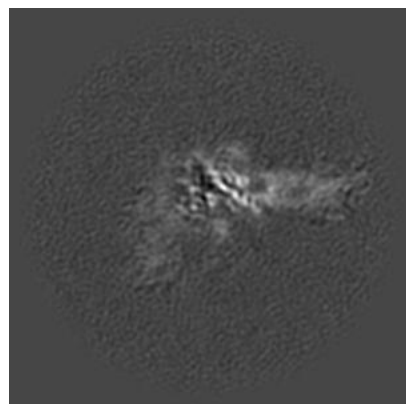


Z Index: 128

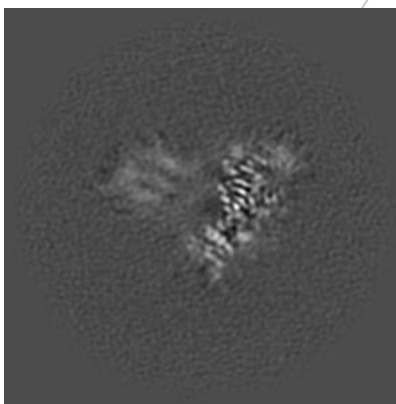
The images above show central slices of the map in three orthogonal directions.

## 6.3 Largest variance slices [i](#)

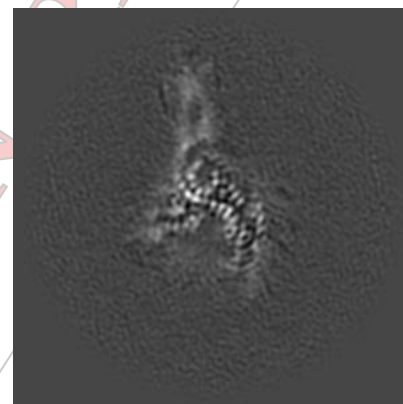
### 6.3.1 Primary map



X Index: 111



Y Index: 128



Z Index: 141

The images above show the largest variance slices of the map in three orthogonal directions.

## 6.4 Orthogonal surface views [i](#)

### 6.4.1 Primary map



X



Y



Z

The images above show the 3D surface view of the map at the recommended contour level 0.29. These images, in conjunction with the slice images, may facilitate assessment of whether an appropriate contour level has been provided.

## 6.5 Mask visualisation [i](#)

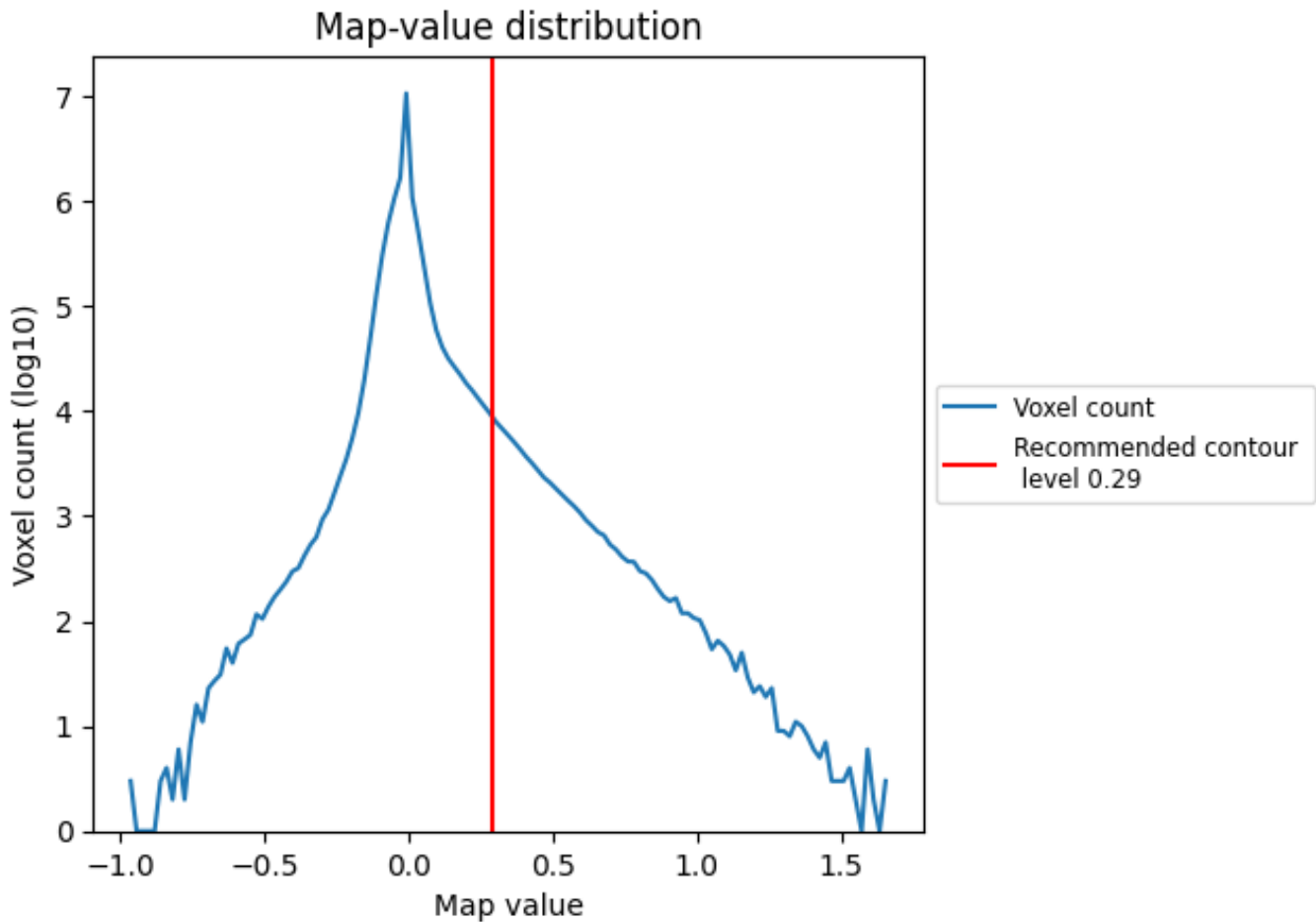
This section was not generated. No masks/segmentation were deposited.

**CONFIDENTIAL VALIDATION REPORT**

## 7 Map analysis [i](#)

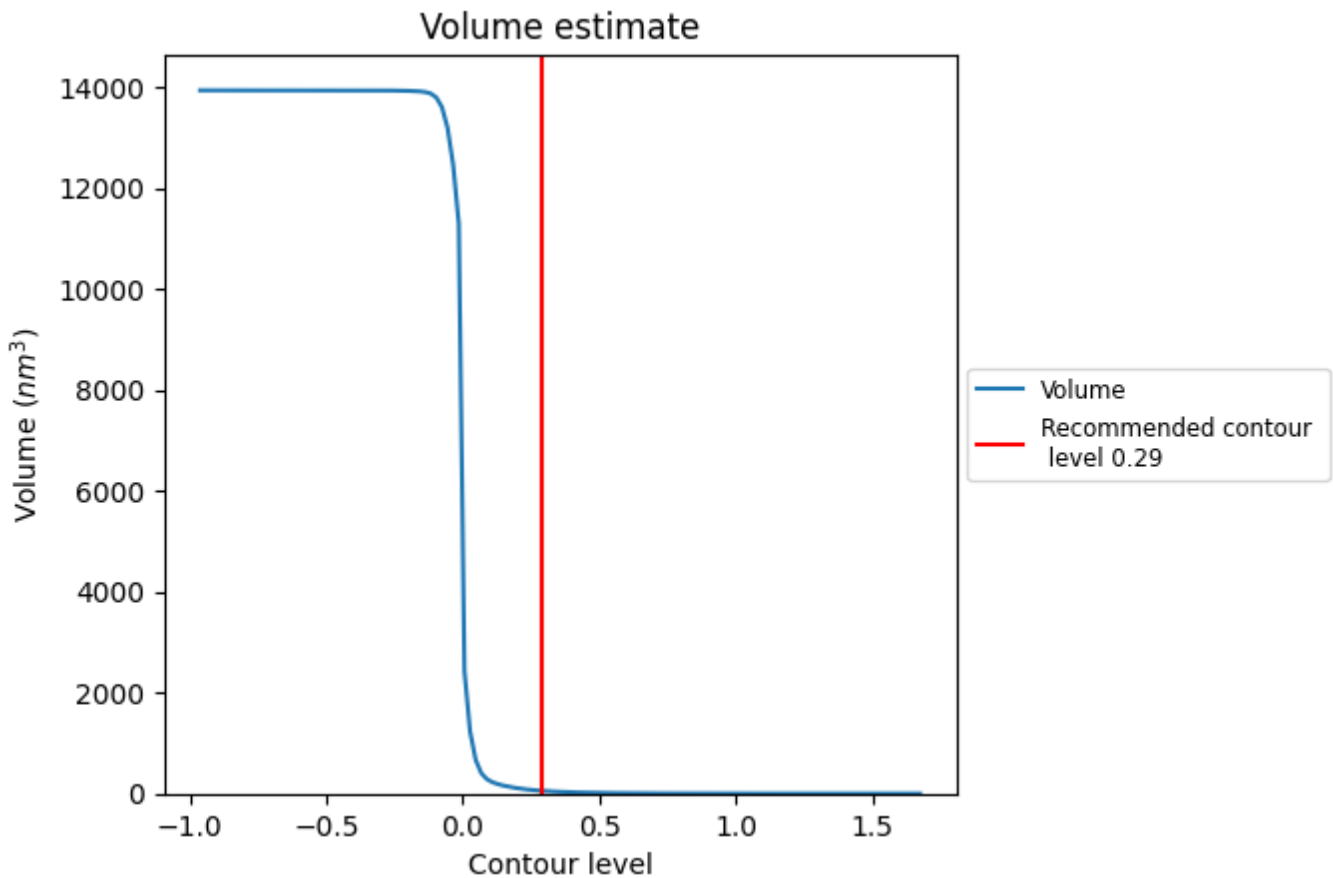
This section contains the results of statistical analysis of the map.

### 7.1 Map-value distribution [i](#)



The map-value distribution is plotted in 128 intervals along the x-axis. The y-axis is logarithmic. A spike in this graph at zero usually indicates that the volume has been masked.

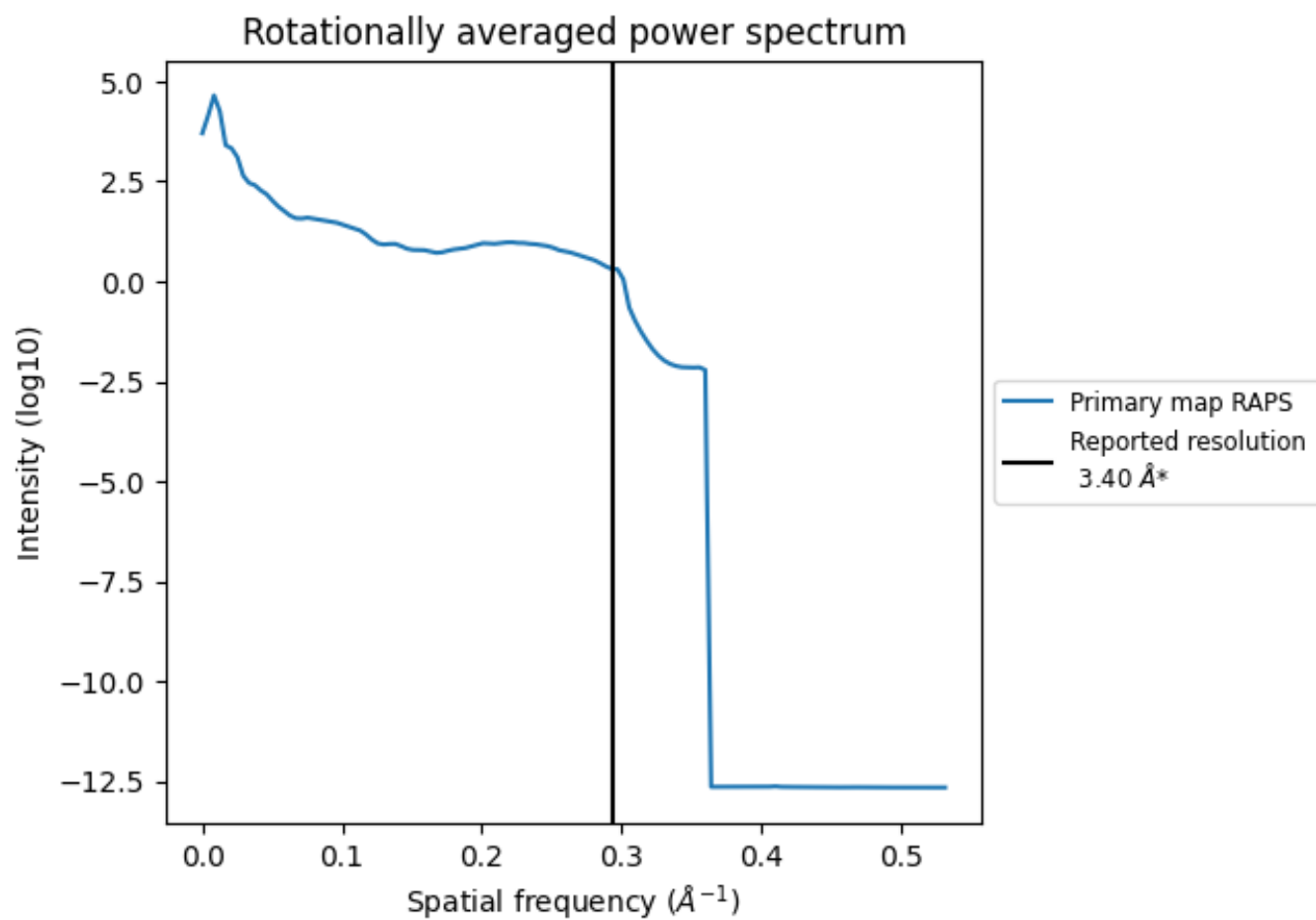
## 7.2 Volume estimate [\(i\)](#)



The volume at the recommended contour level is 54 nm<sup>3</sup>; this corresponds to an approximate mass of 49 kDa.

The volume estimate graph shows how the enclosed volume varies with the contour level. The recommended contour level is shown as a vertical line and the intersection between the line and the curve gives the volume of the enclosed surface at the given level.

### 7.3 Rotationally averaged power spectrum i



\*Reported resolution corresponds to spatial frequency of 0.294 Å<sup>-1</sup>

CONFIDENTIAL

## 8 Fourier-Shell correlation [i](#)

This section was not generated. No FSC curve or half-maps provided.

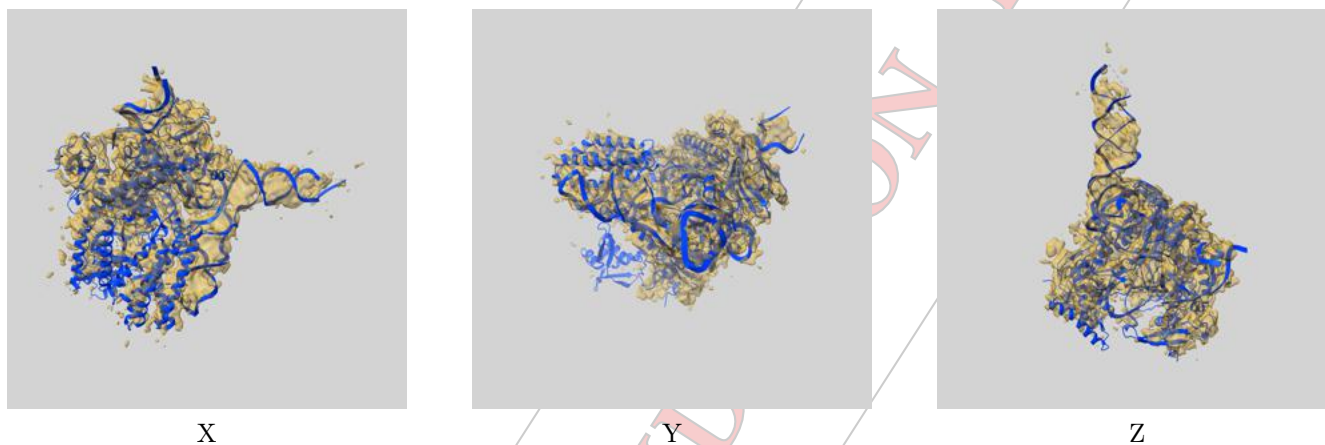
**CONFIDENTIAL VALIDATION REPORT**



## 9 Map-model fit [i](#)

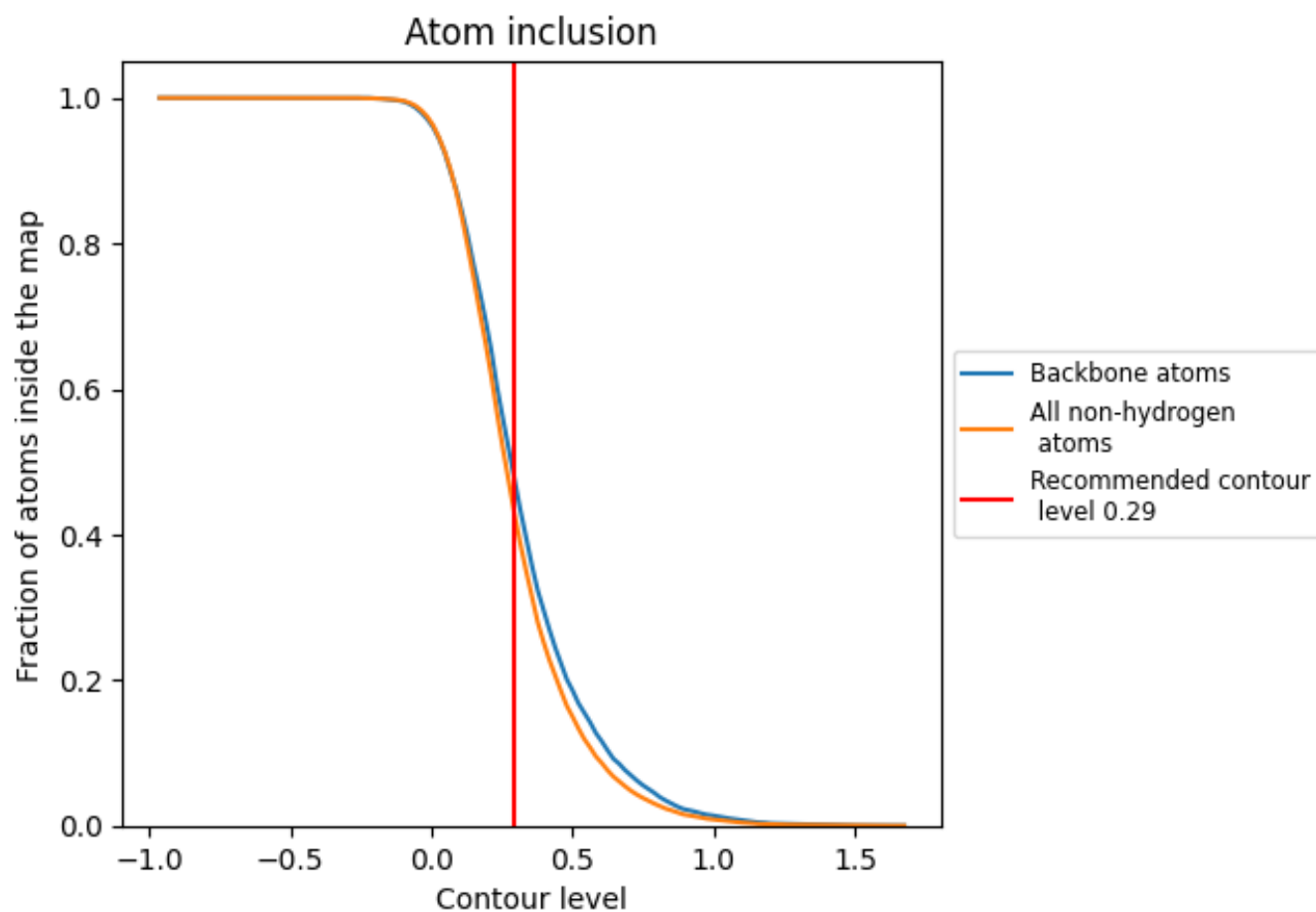
This section contains information regarding the fit between EMDB map EMD-32390 and PDB model 7WAZ. Per-residue inclusion information can be found in section 3 on page 4.

### 9.1 Map-model overlay [i](#)



The images above show the 3D surface view of the map at the recommended contour level 0.29 at 50% transparency in yellow overlaid with a ribbon representation of the model coloured in blue. These images allow for the visual assessment of the quality of fit between the atomic model and the map.

## 9.2 Atom inclusion [i](#)



At the recommended contour level, 48% of all backbone atoms, 44% of all non-hydrogen atoms, are inside the map.

CONFIDENTIAL