

Supplementary Information

Design, Synthesis, and Pre-clinical Evaluation of Prostate-Specific Membrane Antigen (PSMA)- Targeted ^{99m}Tc -Radioimaging Agents

*Sumith A. Kularatne*¹

*Zhigang Zhou*²

*Jun Yang*¹

*Carol B. Post*²

Philip S. Low^{1*}

¹ Department of Chemistry, Purdue University, 560 Oval Drive, West Lafayette, IN 47907.

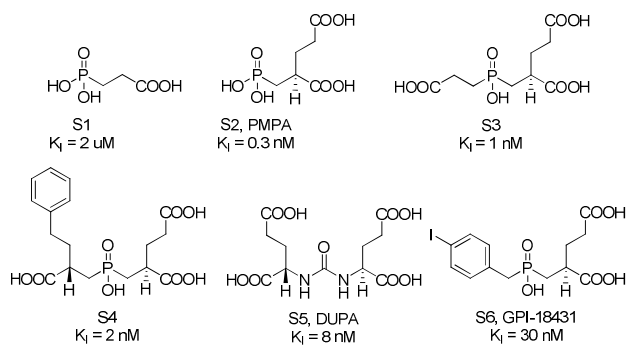
² Department of Medicinal Chemistry, Purdue University, 915 West State Street, W. Lafayette, IN
47907.

Author Email Address. sumithk@purdue.edu, zhougeor@ncbi.nlm.nih.gov, Jun.Yang@STJUDE.org,
cbp@purdue.edu, and plow@purdue.edu

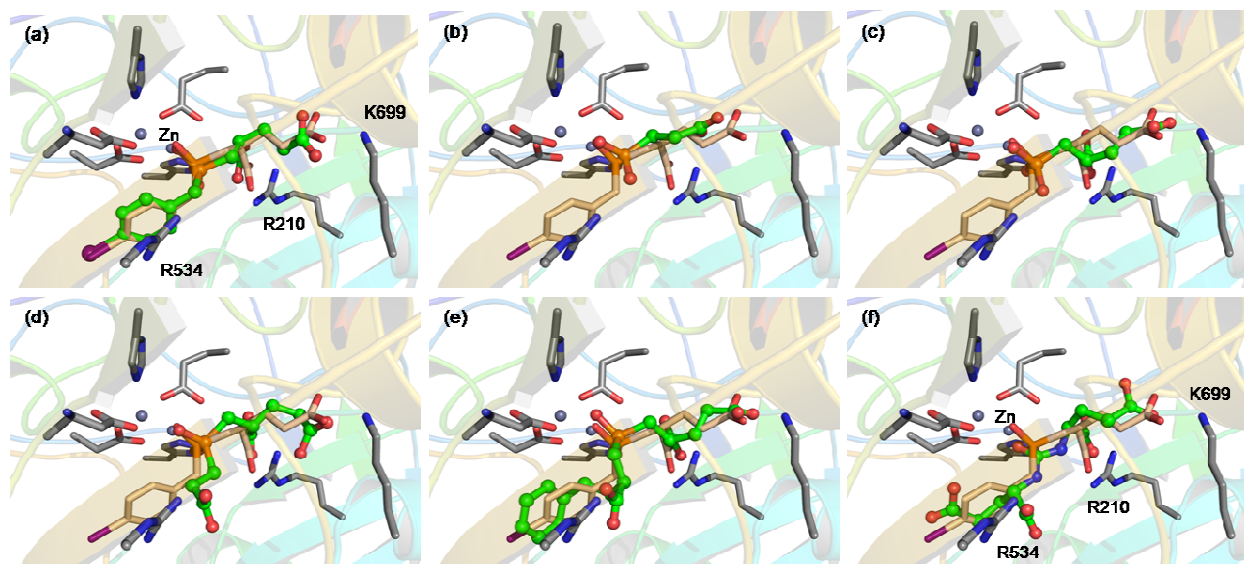
Received Date.

Title Running Head. PSMA-targeted radioimaging of prostate cancer.

Corresponding Author Footnote. *Department of Chemistry, Purdue University, 560 Oval Drive,
West Lafayette, IN 47907; Phone: 765-494-5273; Fax: 765-494-5272; e-mail: plow@purdue.edu



Supplementary Figure 1 Structures of NAALADase inhibitors¹⁻³



Supplementary Figure 2 Superimposition of (a) docked GPI-18431, (b) S1, (c) S2, (d) S3, (e) S4, and (f) DUPA with GPI-18431.

References

- 1) Jackson, P. F.; Slusher, B. S. Design of NAALADase: A novel neuroprotective strategy. *Curr. Med. Chem.* **2001**; 8, 949-957.
- 2) Kozikowski, A. P.; Nan, F.; Conti, P.; Zhang, J.; Ramadan, J. T.; *J. Med. Chem.* **2001**, 44, 298-301.

- 3) Mesters, J. R.; Barinka, C.; Li, W. Structure of glutamate carboxypeptidase II, a drug target in neuronal damage and prostate cancer. *EMBO J.* **2006**, *25*, 1375-1384.