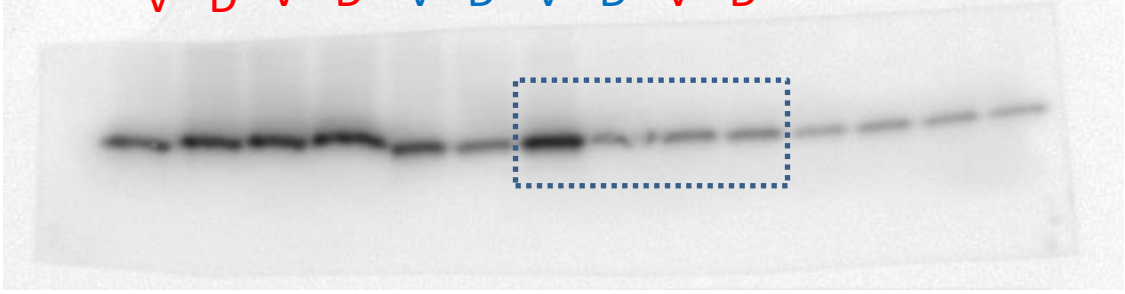
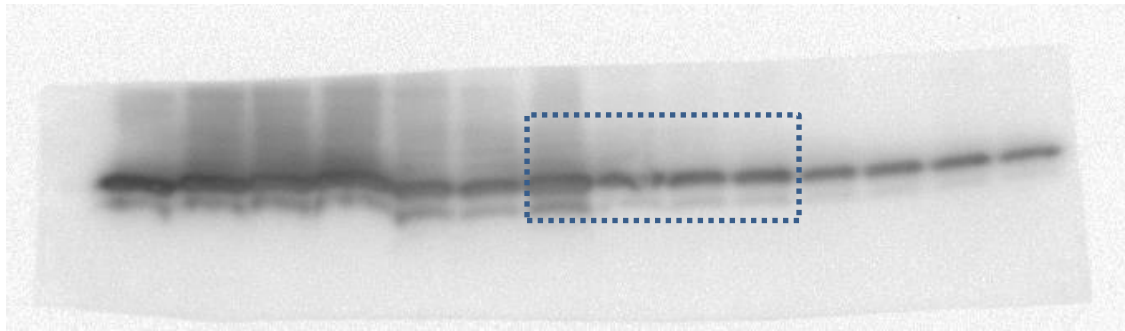


V D V D V D V D V D V D V D



H3K9Ac

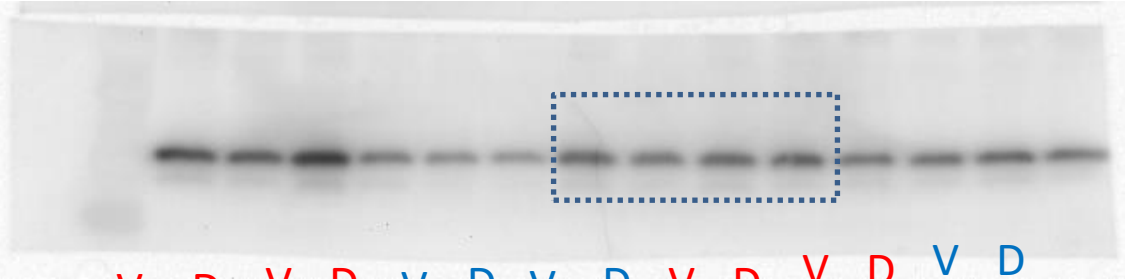


Stripped & reprobed H3

V D V D V D V D V D V D V D

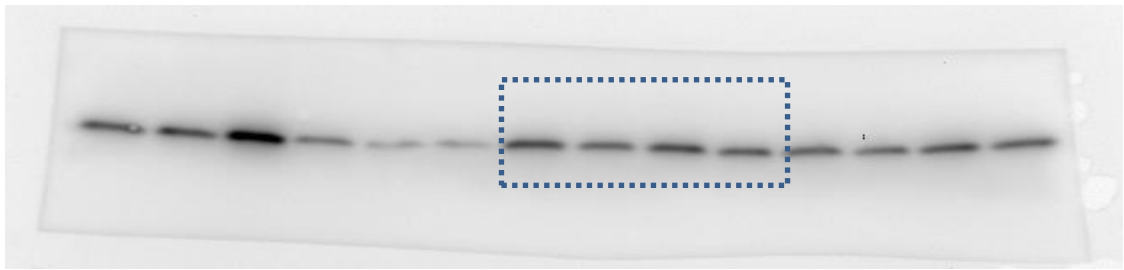


H3K14Ac

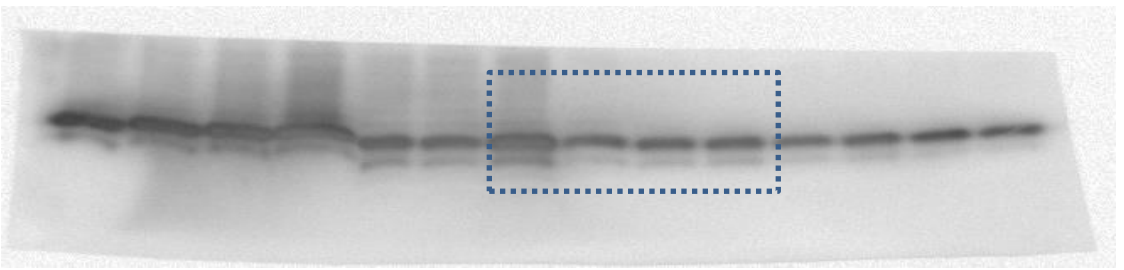


Stripped & reprobed H3

V D V D V D V D V D V D V D

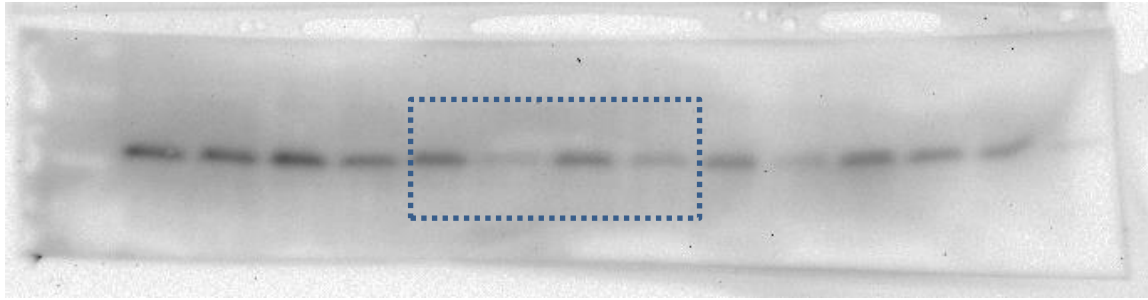


H3K18Ac

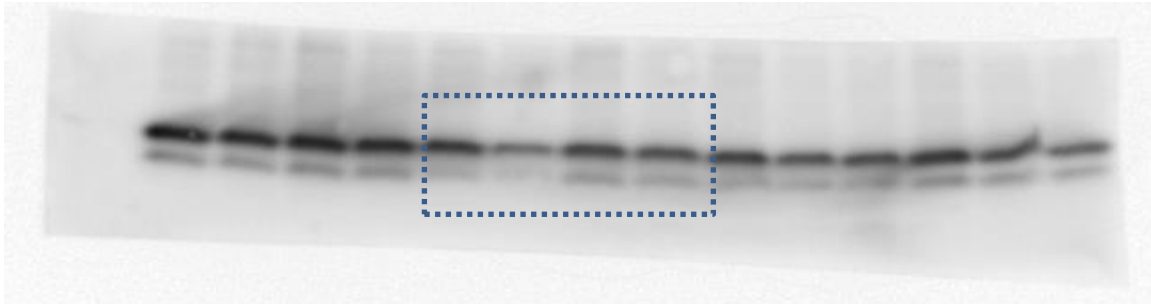


Stripped & reprobed H3

V D V D V D V D V D V D V D



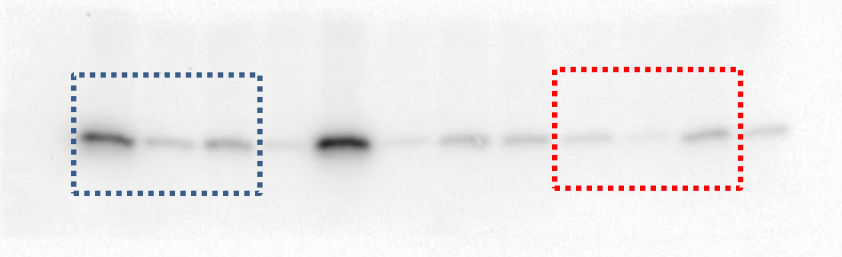
H3K27Ac



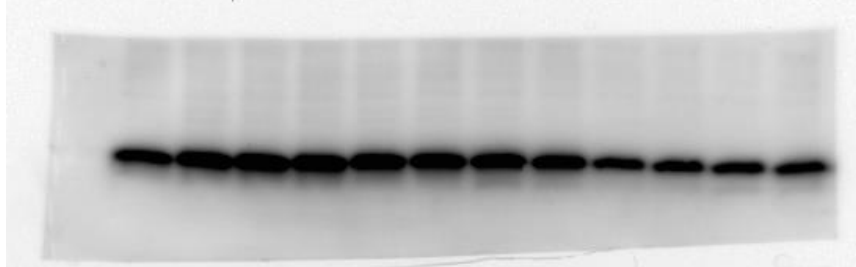
Stripped & reprobed H3

Uncropped blots from Figure 5B. V, vehicle; D, DFMO; blue, male trophoblasts; red, female trophoblasts

1 2 3 4 1 2 3 4 1 2 3 4



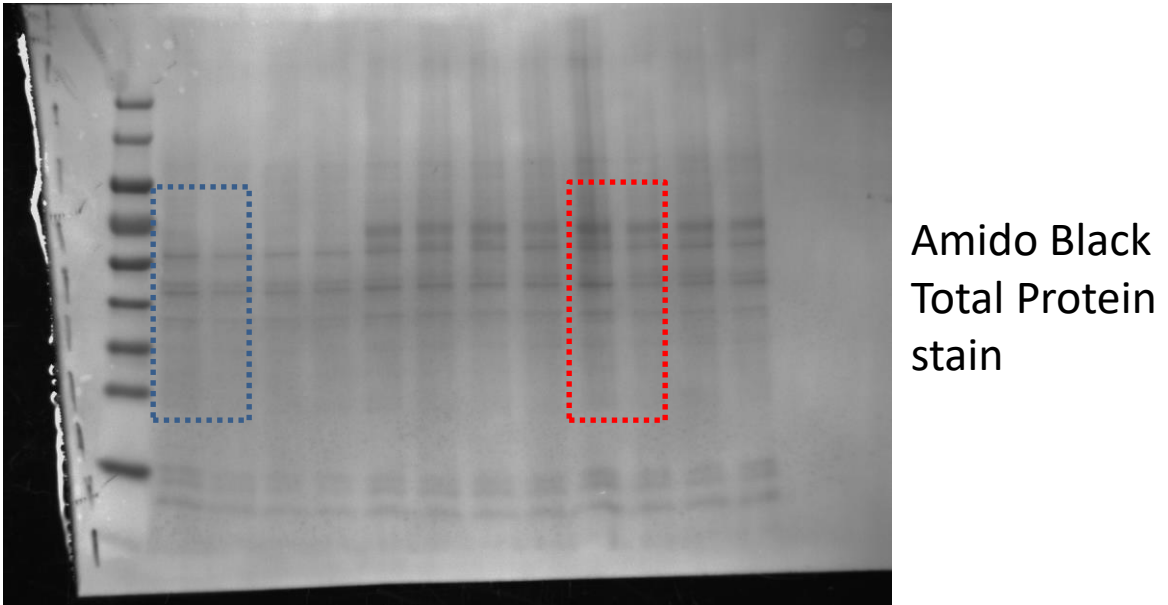
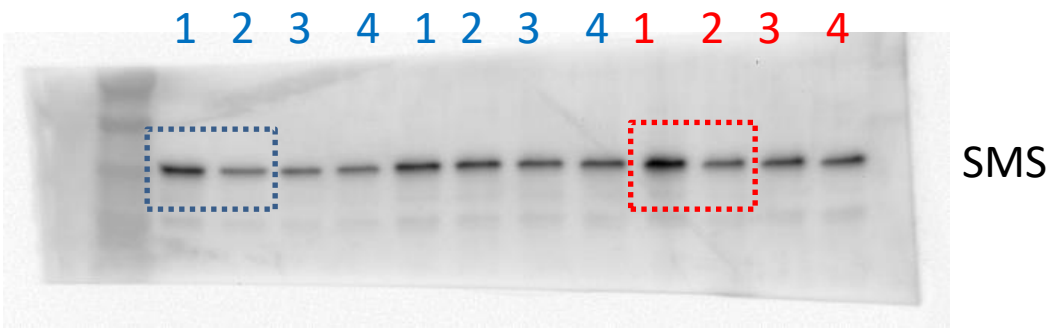
H3K27Ac



Stripped & reprobed H3

1: Scr; 2: Scr + DENSPM; 3: siSAT1+DENSPM; 4: siSAT1

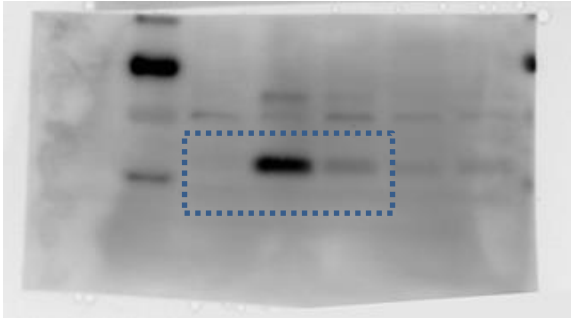
Uncropped blots from Figure 5C. Blue numbers = male trophoblasts; red numbers = female trophoblasts



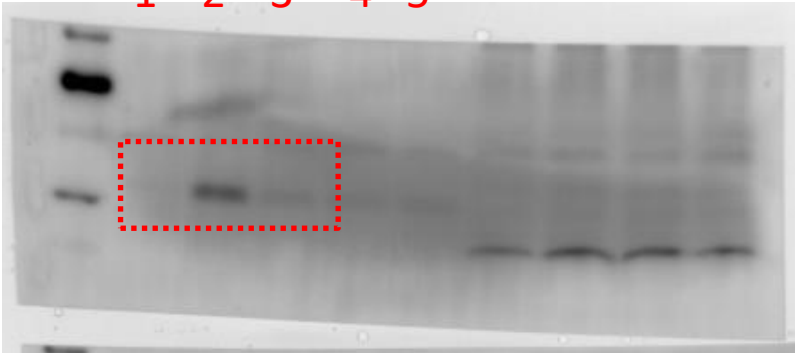
1: Scr; 2: siSMS#1; 3: siSMS#2 4: siSMS#3

Uncropped blots from Supplemental Figure 5A. Blue numbers = male trophoblasts; red numbers = female trophoblasts

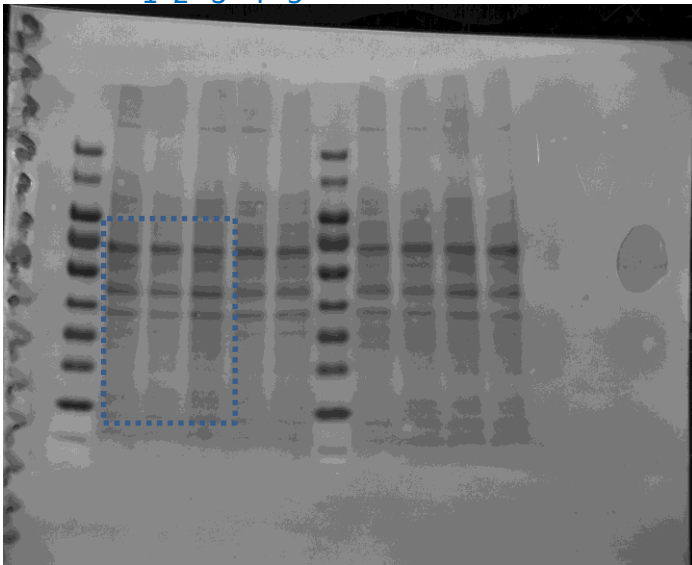
1 2 3 4 5



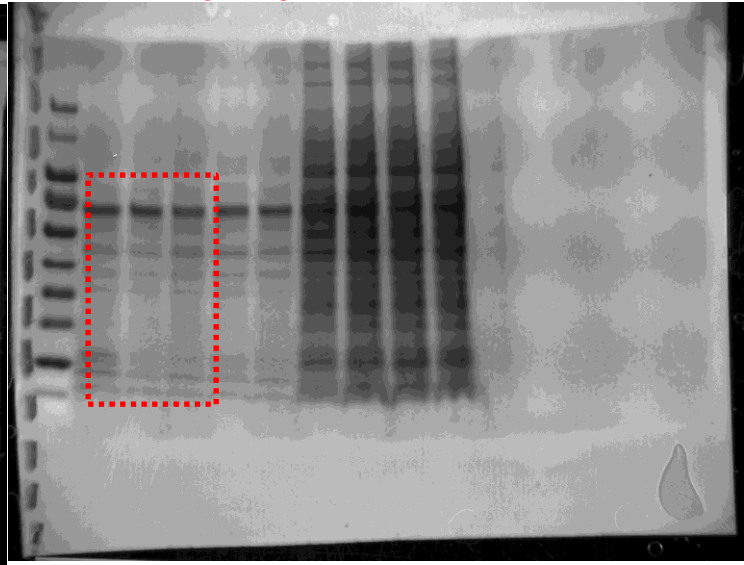
1 2 3 4 5



1 2 3 4 5

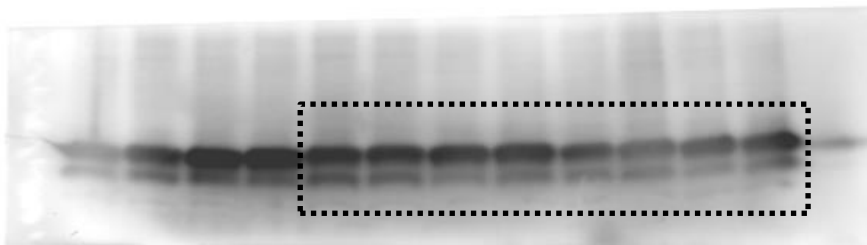
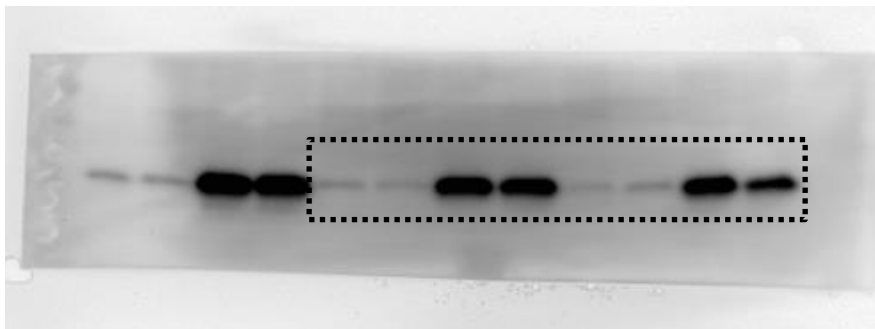
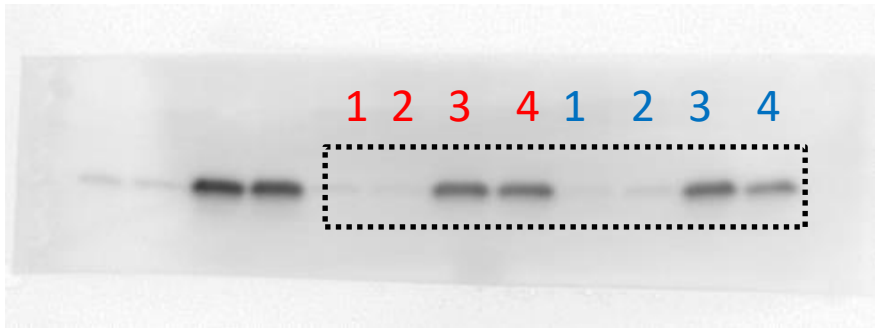


1 2 3 4 5



1: Scr; 2: Scr+DENSPM; 3: siSAT1#1 + DENSPM; 4: siSAT1#2 + DENSPM; 5: siSAT1 #3 + DENSPM

Uncropped blots from Supplemental Figure 5B. Blue numbers = male trophoblasts; red numbers = female trophoblasts



1: Veh, 2: DFMO, 3: TSA, 4: DFMO + TSA

Uncropped blots from Supplemental Figure 6B. Blue numbers = male trophoblasts; red numbers = female trophoblasts