

Supplementary Information

Gibbin (*AHDC1*) regulates the mesoderm to pattern epithelial development

Ann Collier¹, Angela Liu^{1,2}, Jessica Torkelson¹, Jillian Pattison¹, Sadhana Gaddam¹,
Hanson Zhen¹, Tiffany Patel¹, Kelly McCarthy¹, Hana Ghanim^{1,2}, and Anthony E. Oro^{1,2,3}

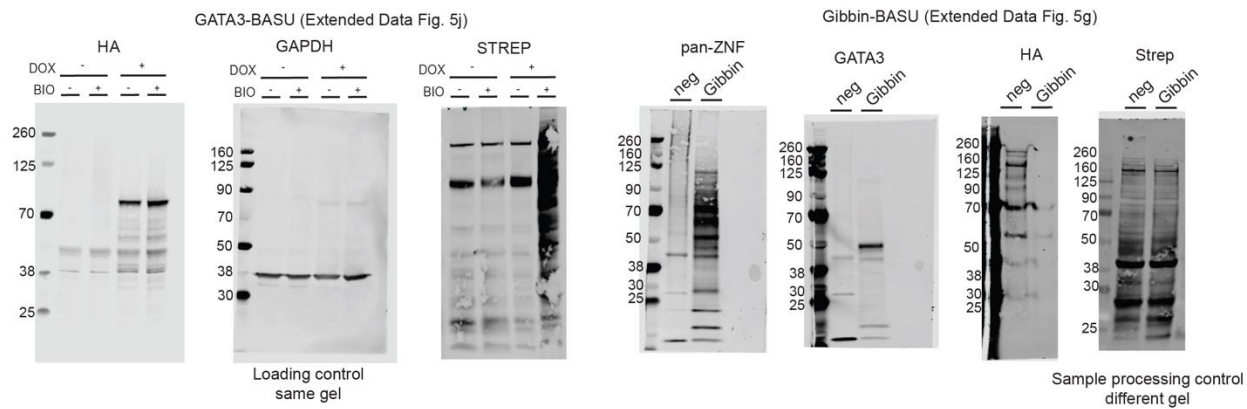
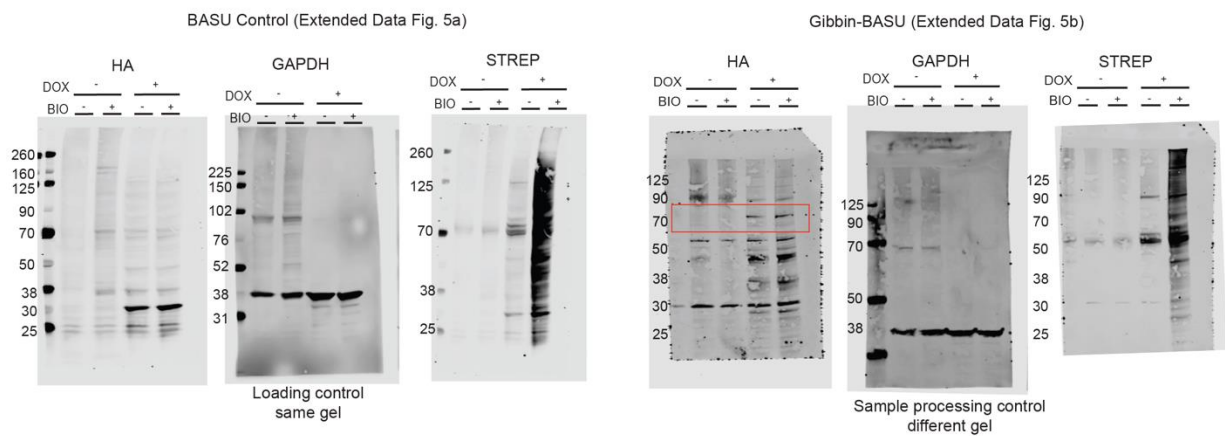
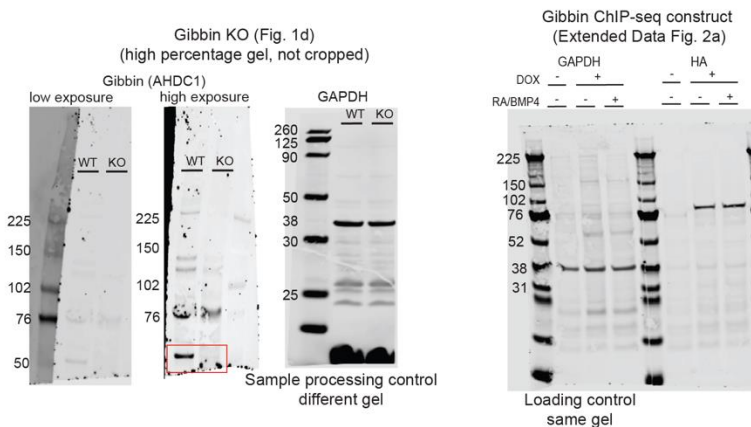
¹ Program in Epithelial Biology and ²Stem Cell Biology and Regenerative Medicine
Graduate Program

Stanford University, Stanford, CA, USA 94305

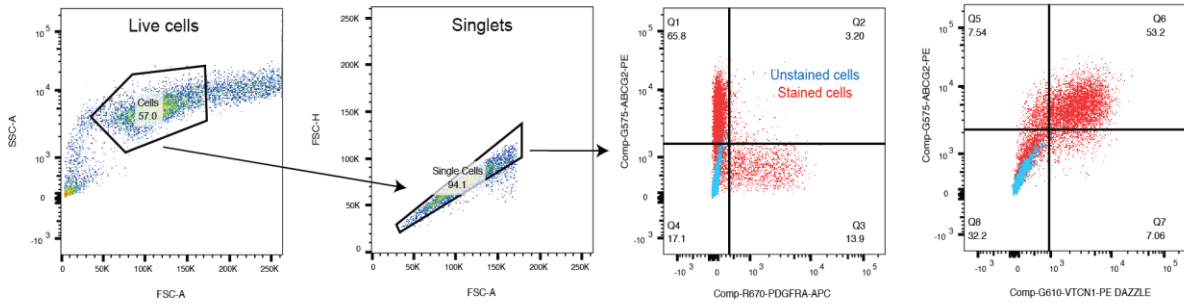
³ Correspondence to: Oro@stanford.edu

Table of Contents

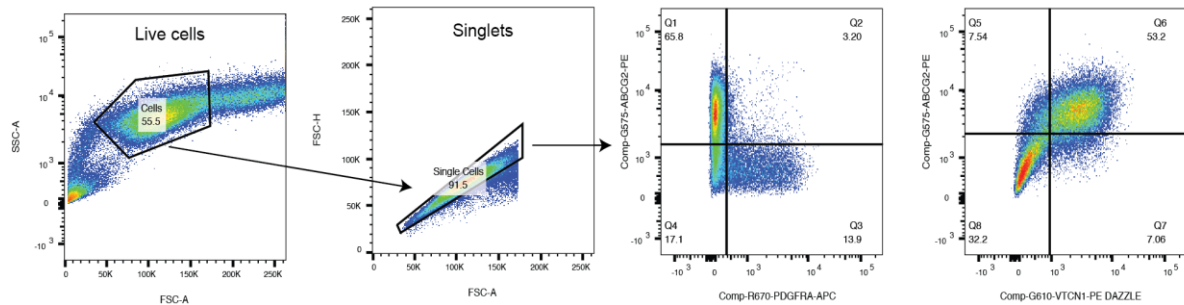
Supplementary Figure 1	page 3
Uncropped immunoblots from all figures.	
Supplementary Figure 2	page 4
Gating strategy for fluorescence associated cell sorting (FACS).	
Supplementary Table 1	separate Excel file
A list of differentially expressed genes and adjusted p-values from RNA-seq experiments, as well as a list of nearest genes from Gibbin ChIP-seq.	
Supplementary Table 2	separate Excel file
A list of SAINT scores for all Gibbin and GATA3 BASU experiments.	
Supplementary Table 3	separate Excel file
PCR primers and sgRNA sequences used in this study.	



a Unstained control



b Stained samples (ABCG2+VTCN1+PDGFRA)



Supplementary Figure 2: Gating strategy for FACS sorting of surface ectoderm and mesoderm. For both unstained (a) and stained (b) samples, cells were first sorted for live cells and then for singlets. Negative control gates were applied to antibody-stained samples to set a threshold for positive vs negative staining. Stained cells were then sorted into ABCG2-/PDGFRA+ mesoderm or ABCG2+/VTCN1+ surface ectoderm.