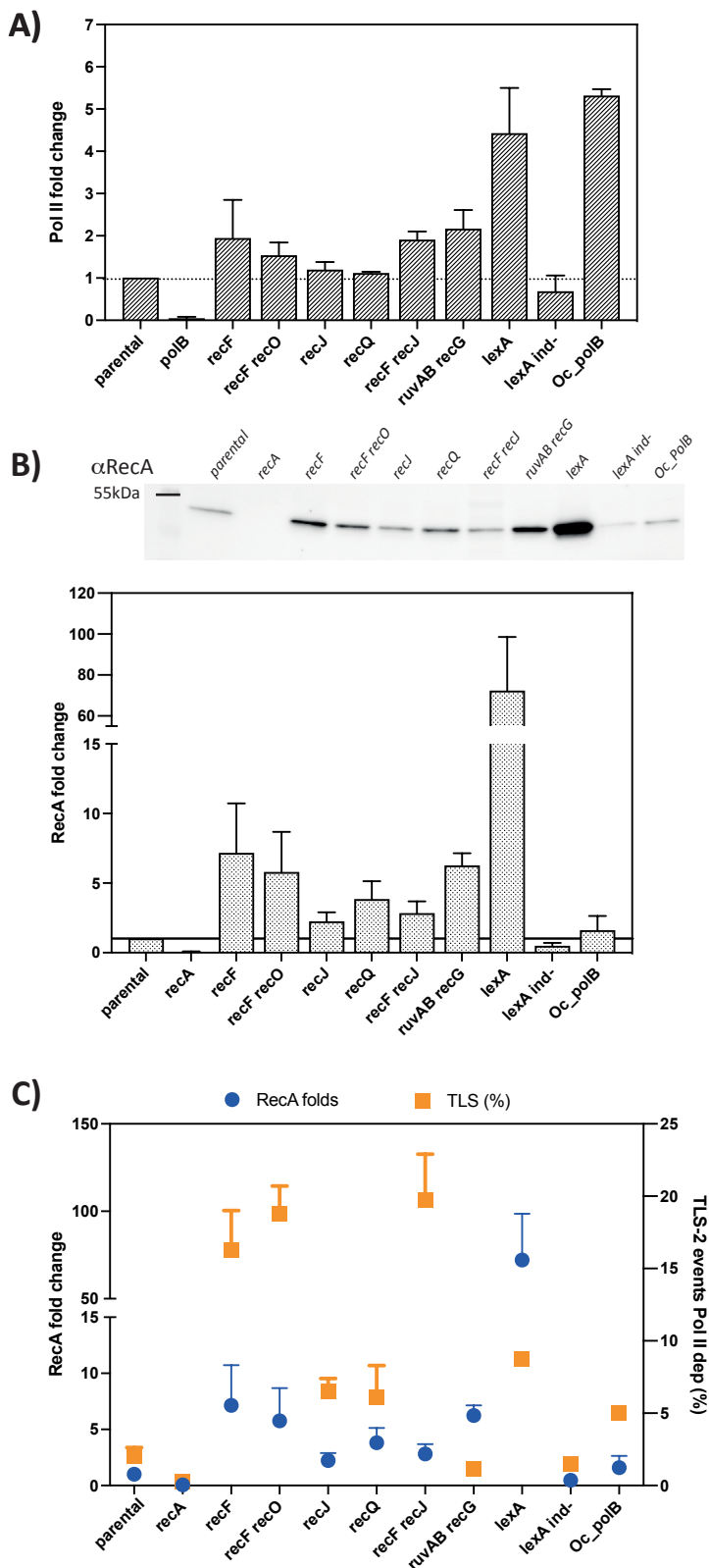


S2 Figure



S2 Figure :

A) Quantification of Pol II fold change expression level (compared to the parental strain).

The data represent the average and standard deviation of 2-3 independent experiments.

B) Western blot measuring the expression level of RecA. As negative control *recA* deficient strain was used, while the *lexA* strain was used as positive control. Below the quantification of RecA fold change compared to the parental strain. The data represent the average and standard deviation of 2-3 independent experiments.

C) Graph correlating the RecA fold change with the percentage of Pol II TLS events measured with our in vivo genetic system.