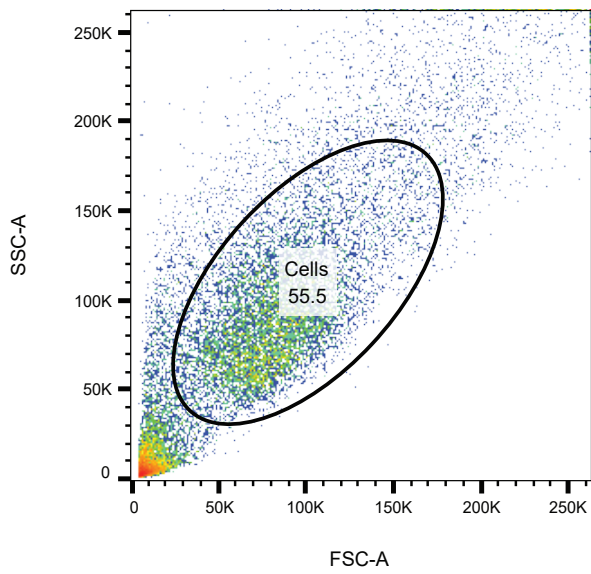


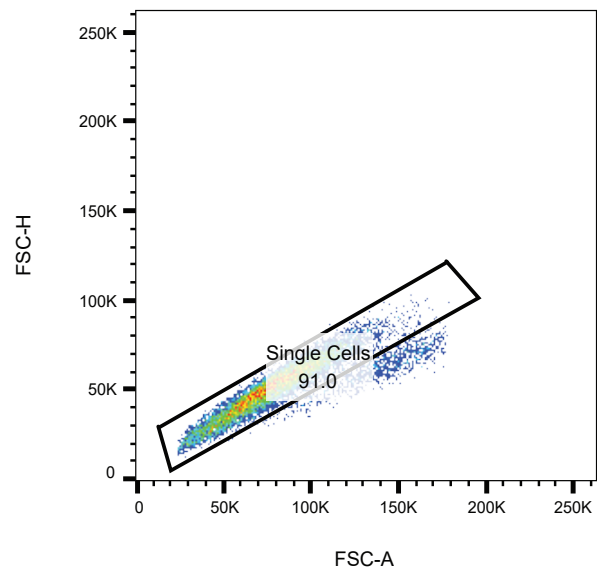
Supplementary information

Integrated multi-omics reveal polycomb repressive complex 2 restricts human trophoblast induction

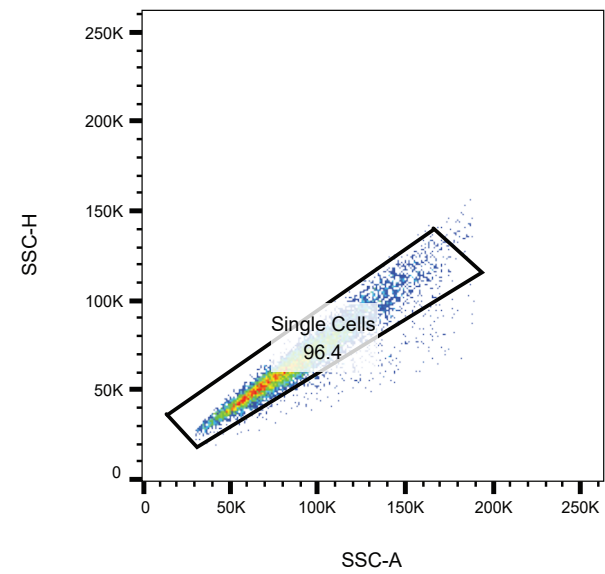
In the format provided by the authors and unedited



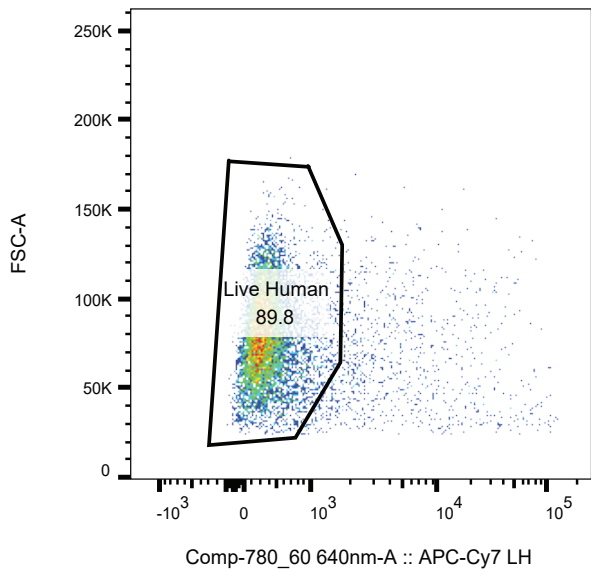
Specimen_001_Primed No UNC Rep1_001.fcs
 Ungated
 20000



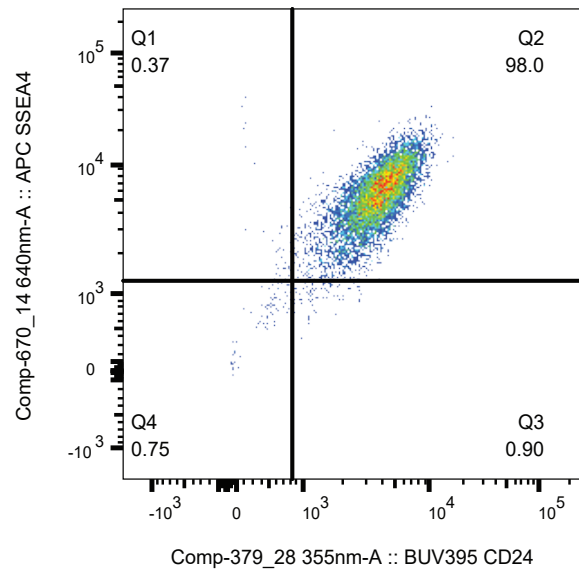
Specimen_001_Primed No UNC Rep1_001.fcs
 Cells
 11108



Specimen_001_Primed No UNC Rep1_001.fcs
 Single Cells
 10105



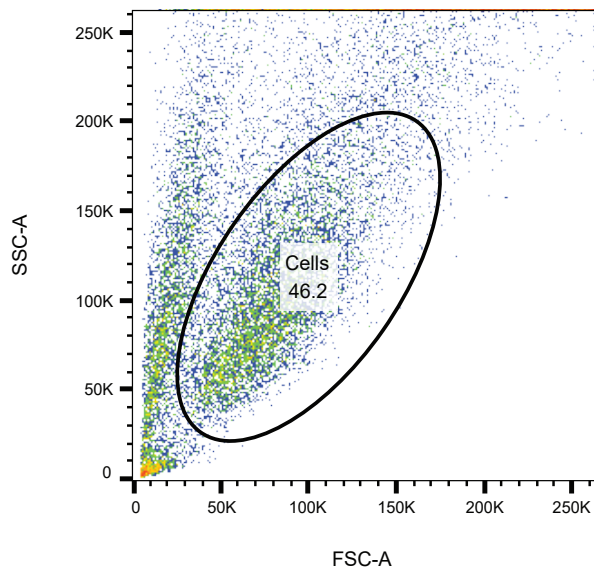
Specimen_001_Primed No UNC Rep1_001.fcs
 Single Cells
 9742



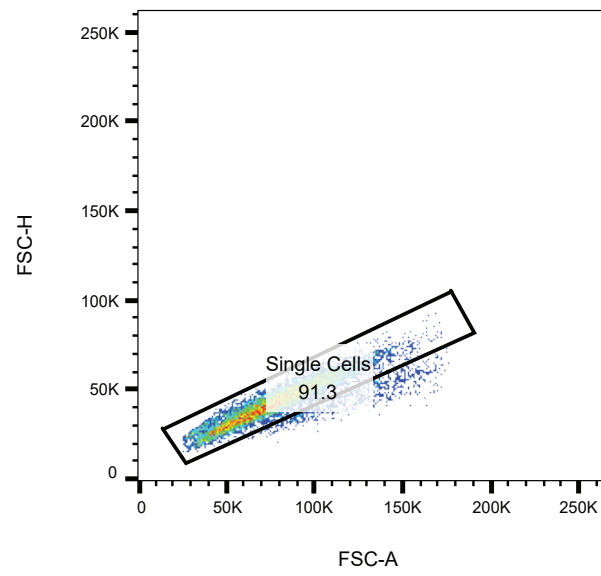
Specimen_001_Primed No UNC Rep1_001.fcs
 Live Human
 8745

Extended Data Figure 4i

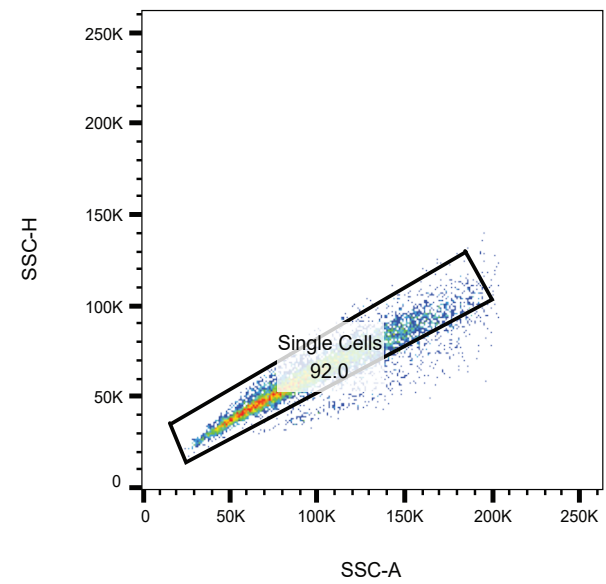
Supplementary Figure 1.
 Flow cytometry and gating
 strategies for Extended
 Data Figure 4i, Extended
 Data Figure 5d, Extended
 Data Figure 5i and
 Extended Data Figure 7b.



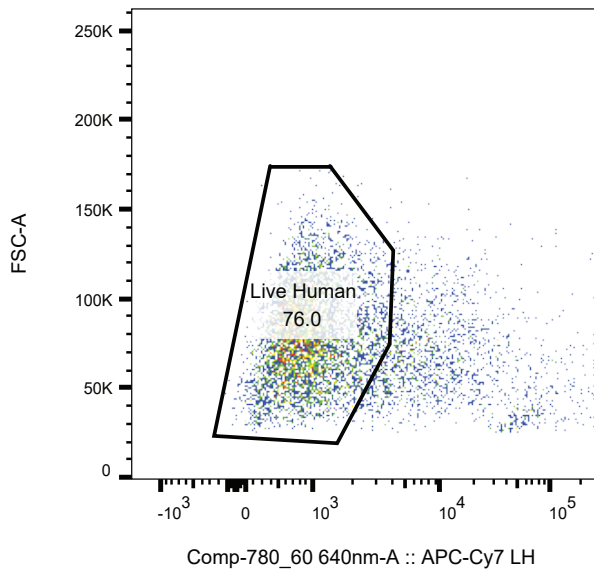
Specimen_001_Naive No UNC Rep3_003.fcs
Ungated
20000



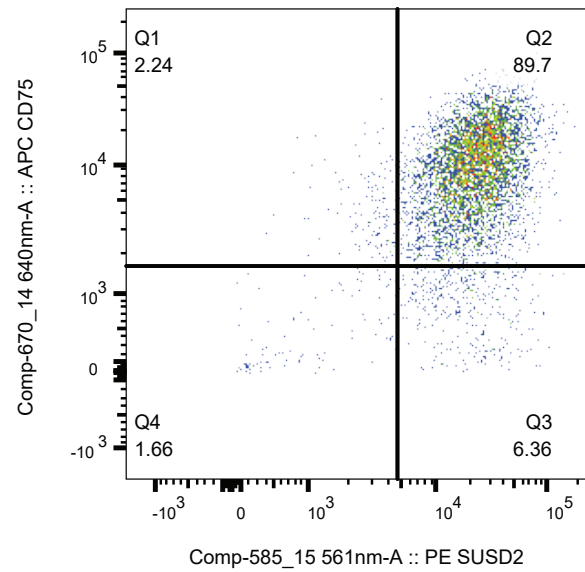
Specimen_001_Naive No UNC Rep3_003.fcs
Cells
9243



Specimen_001_Naive No UNC Rep3_003.fcs
Single Cells
8435

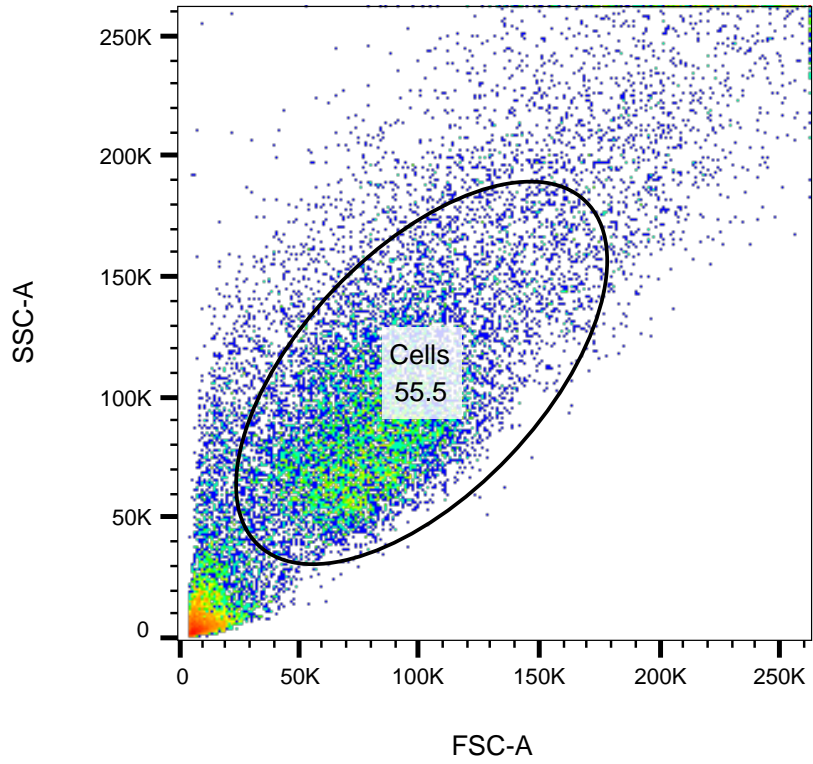


Specimen_001_Naive No UNC Rep3_003.fcs
Single Cells
7764

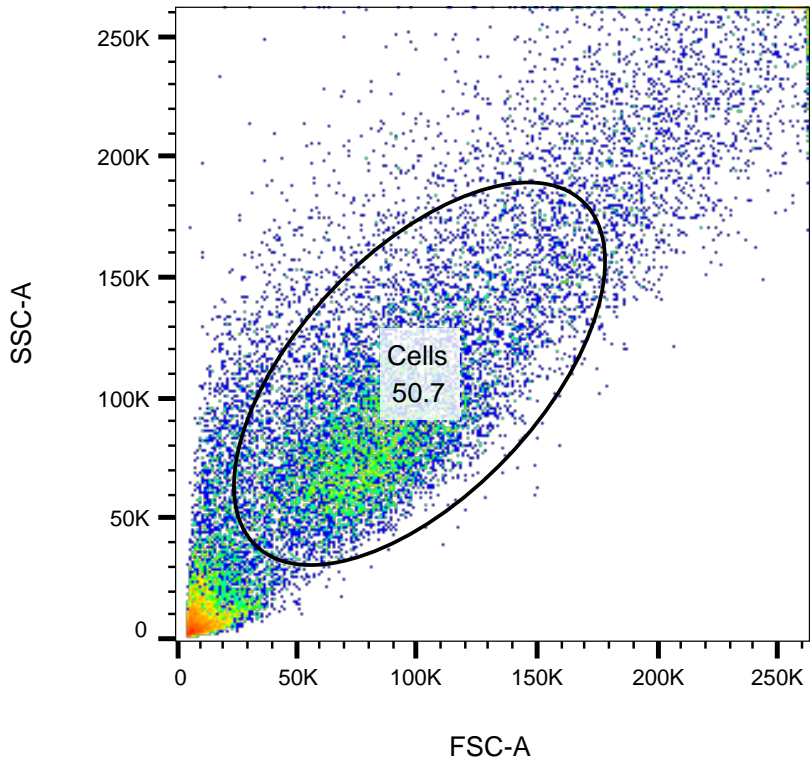


Specimen_001_Naive No UNC Rep3_003.fcs
Live Human
5898

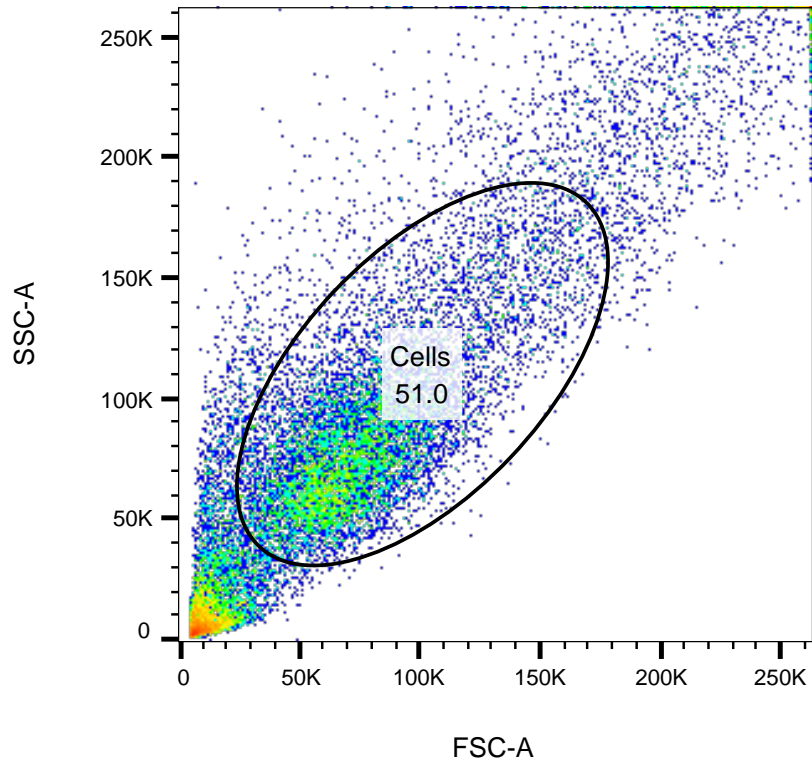
Extended Data Figure 4i



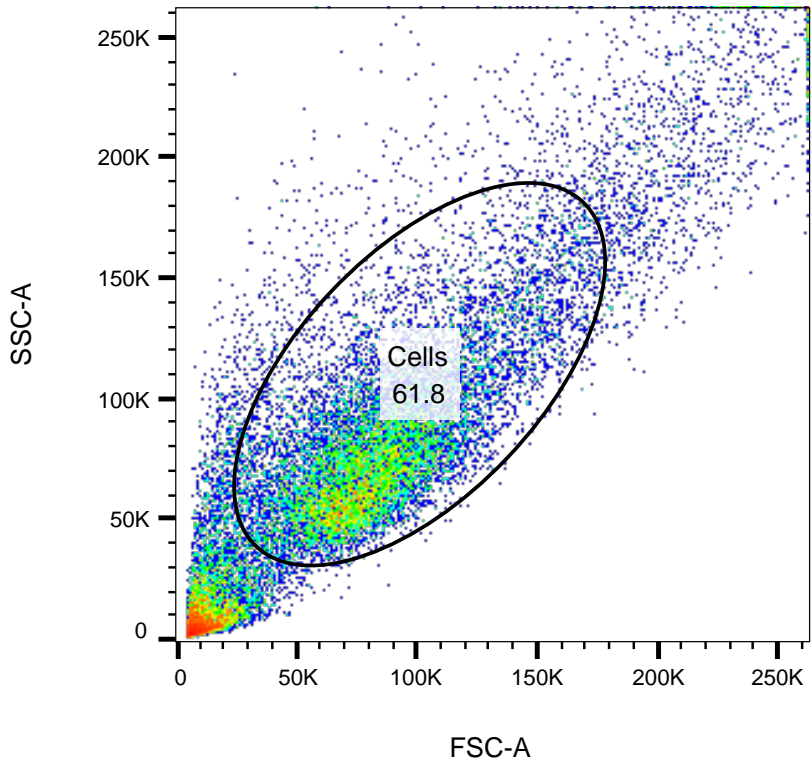
Specimen_001_Primered No UNC Rep1_001.fcs
Ungated
20000



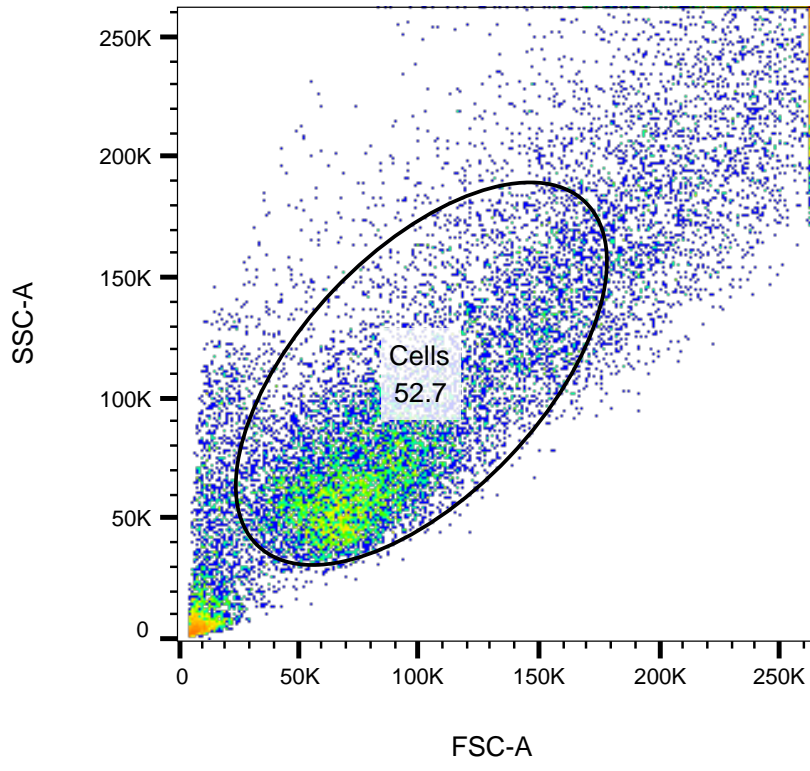
Specimen_001_Primed Plus UNC Rep1_002.fcs
Ungated
20000



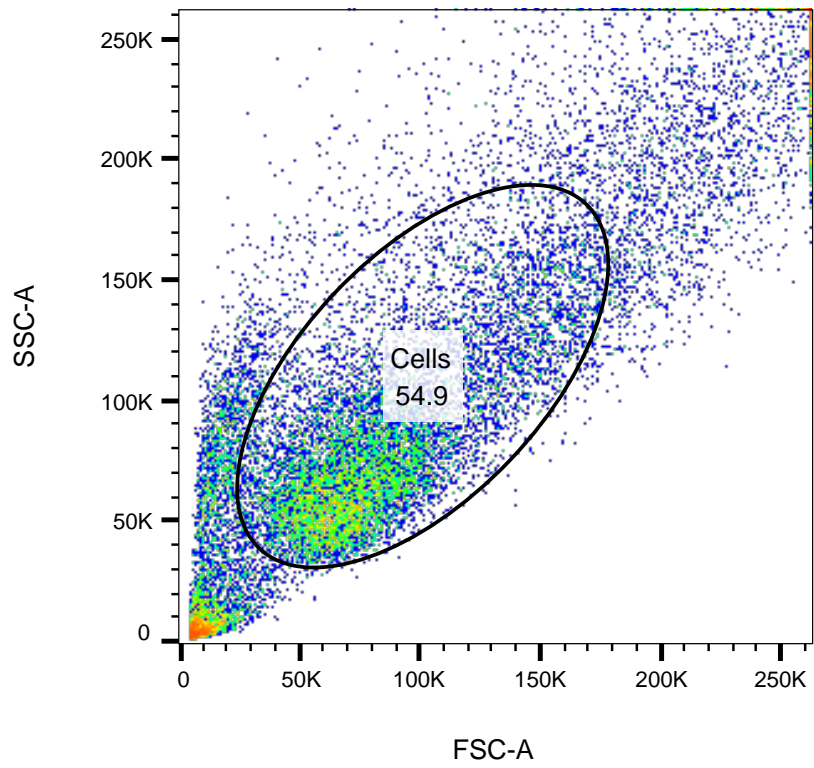
Specimen_001_Primered No UNC Rep2_003.fcs
Ungated
20000



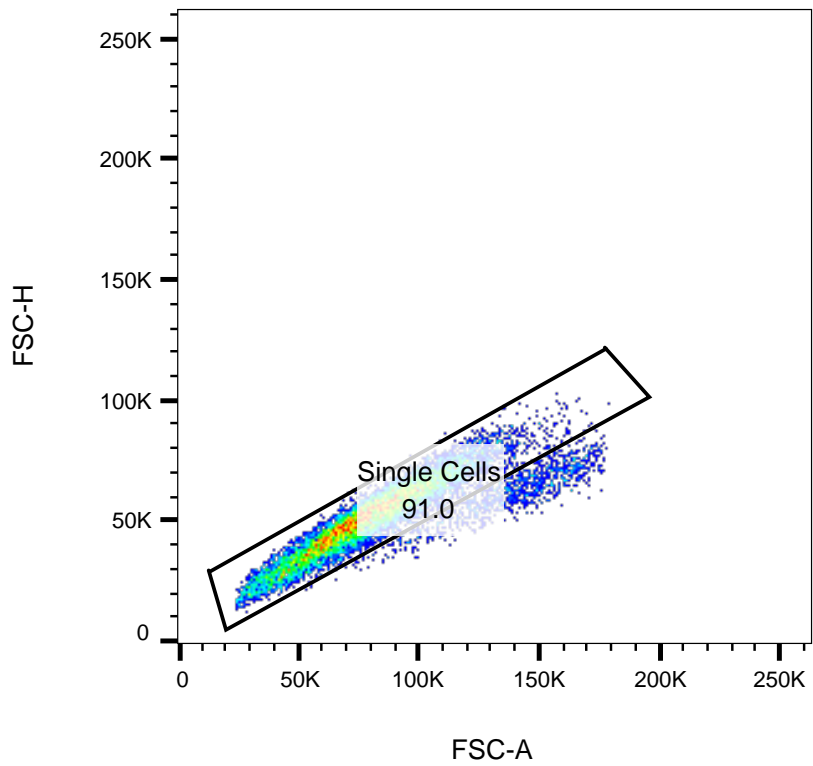
Specimen_001_Primer Plus UNC Rep2_004.fcs
Ungated
20000



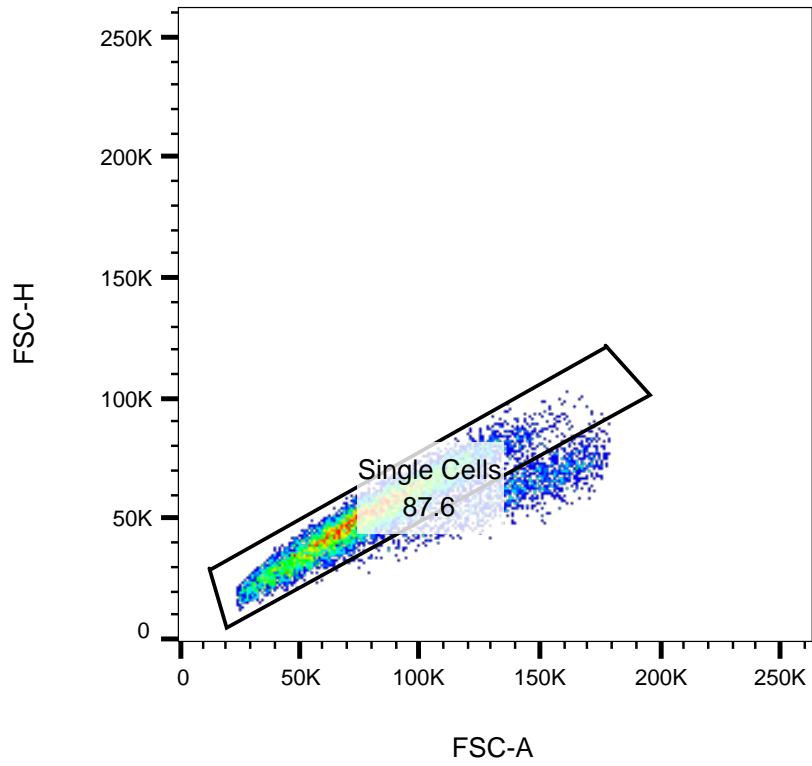
Specimen_001_Primer Plus No UNC Rep3_005.fcs
Ungated
20000



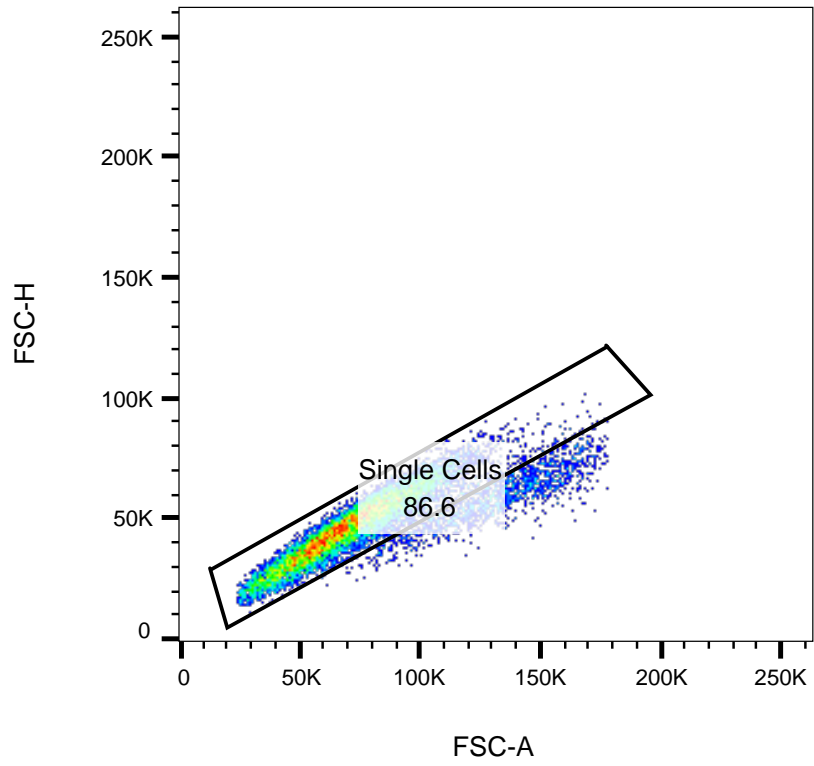
Specimen_001_Primer Plus UNC Rep3_006.fcs
Ungated
20000



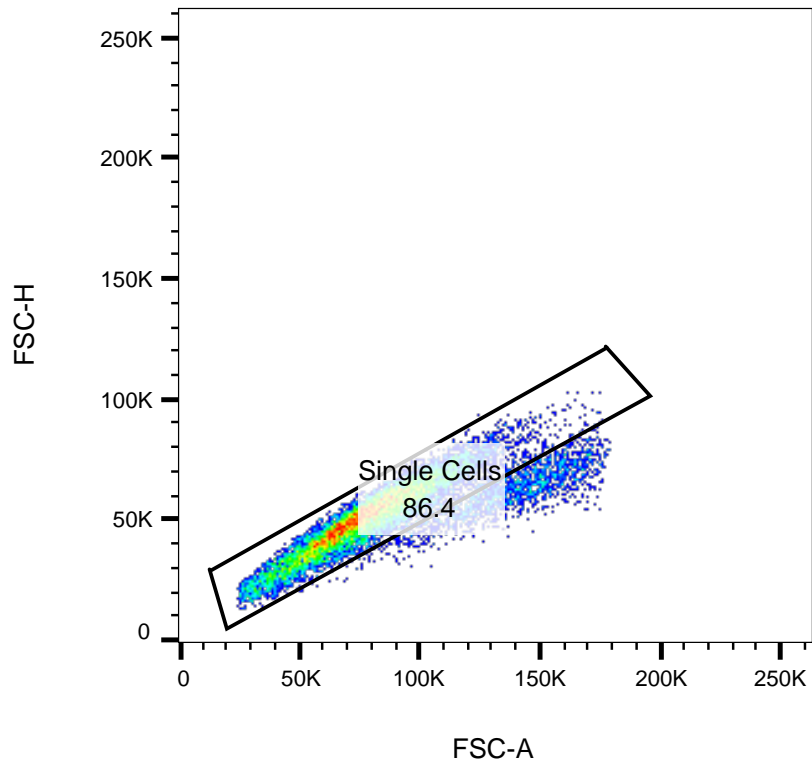
Specimen_001_Primered No UNC Rep1_001.fcs
Cells
11108



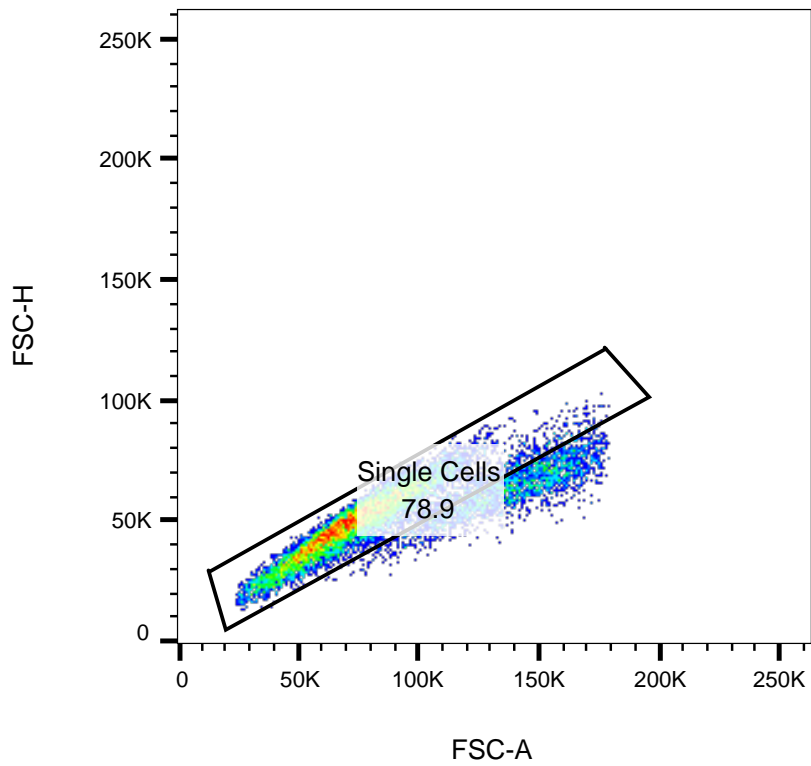
Specimen_001_Primed Plus UNC Rep1_002.fcs
Cells
10149



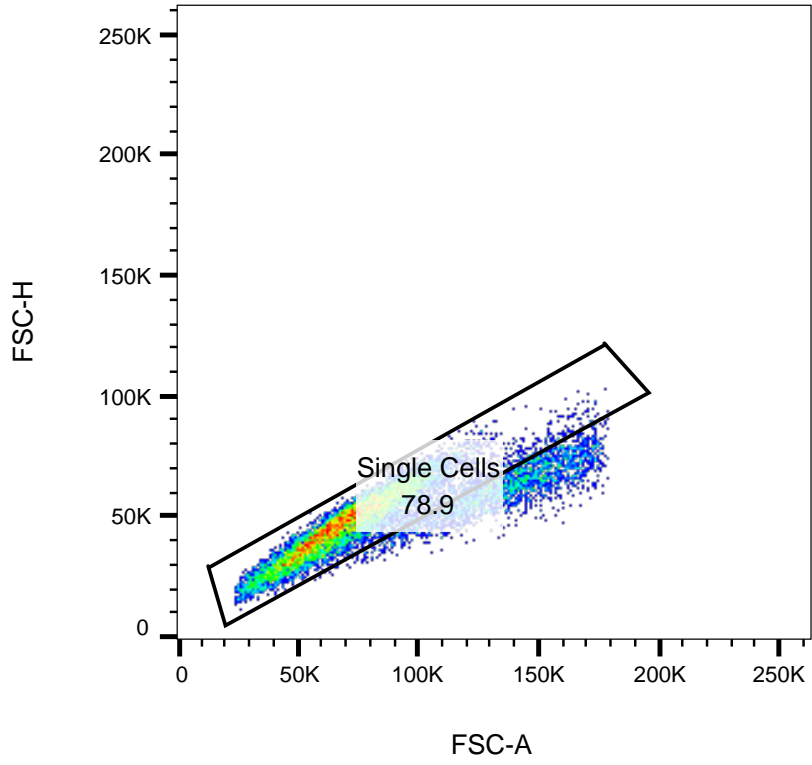
Specimen_001_Primed No UNC Rep2_003.fcs
Cells
10194



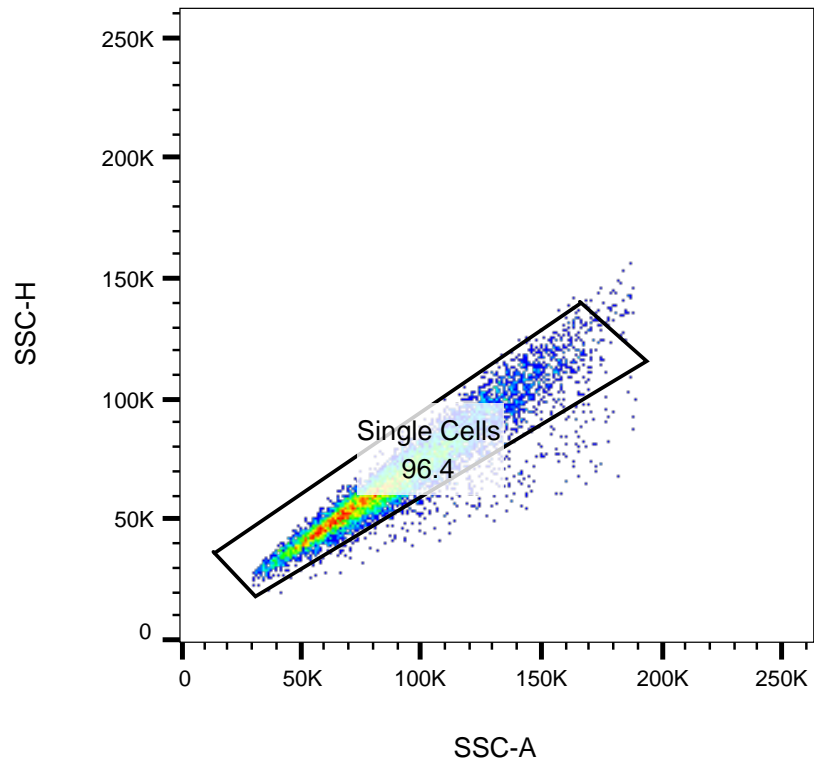
Specimen_001_Primed Plus UNC Rep2_004.fcs
Cells
12350



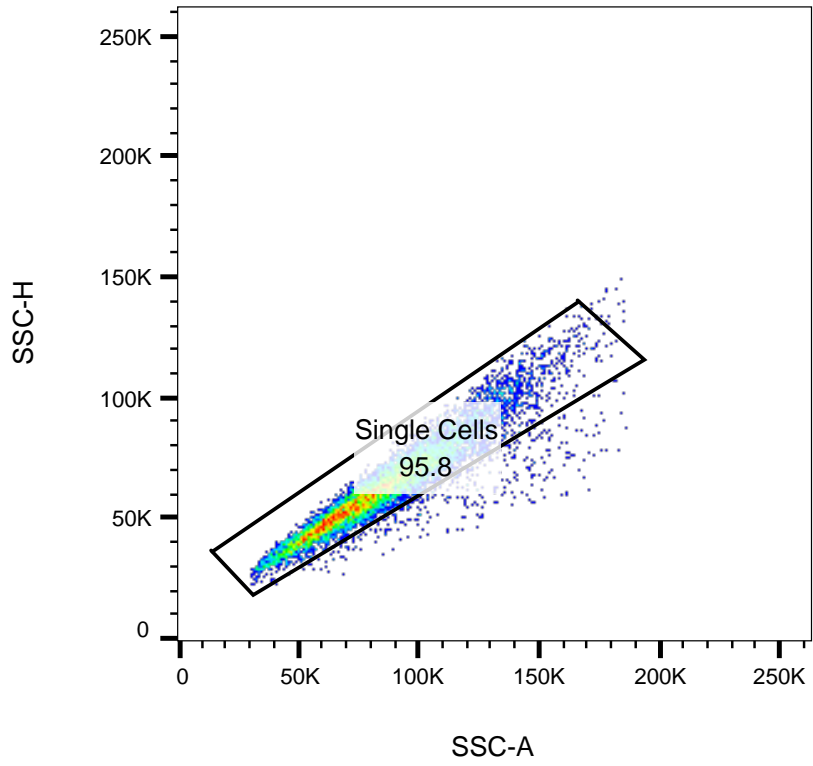
Specimen_001_Primed Plus No UNC Rep3_005.fcs
Cells
10544



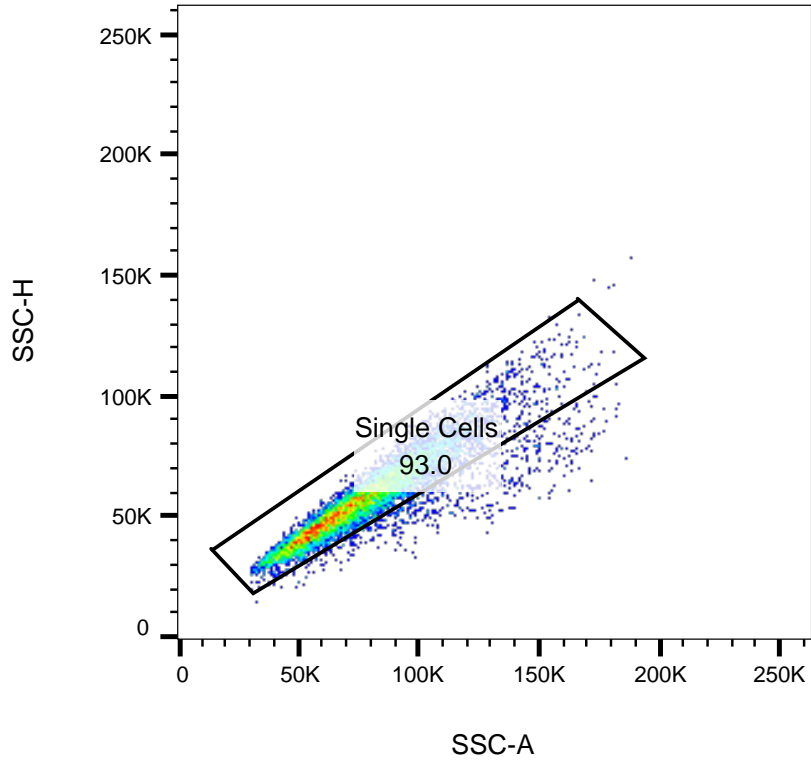
Specimen_001_Primer Plus UNC Rep3_006.fcs
Cells
10982



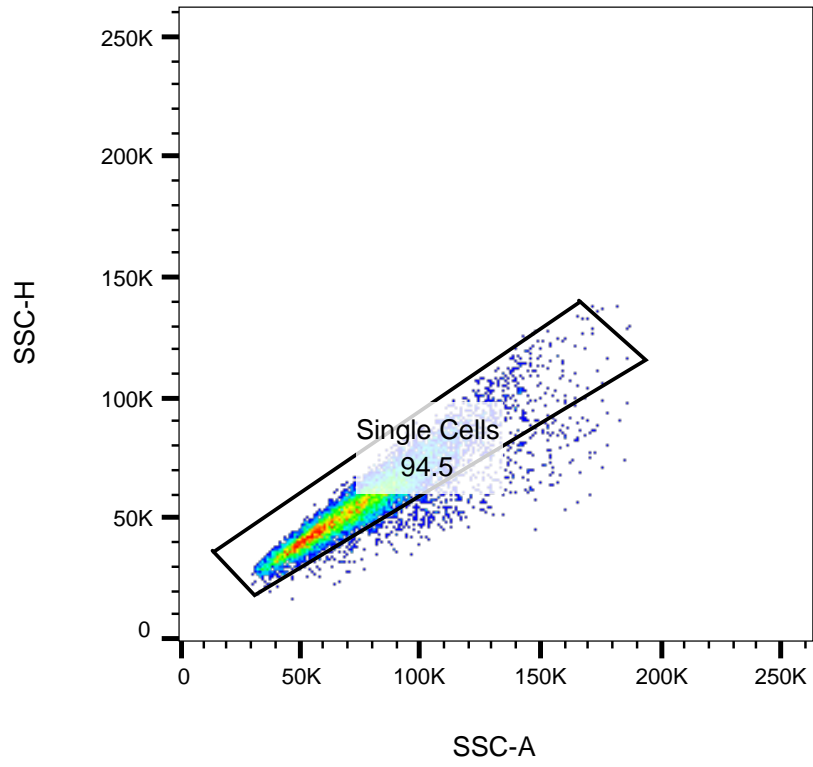
Specimen_001_Primed No UNC Rep1_001.fcs
Single Cells
10105



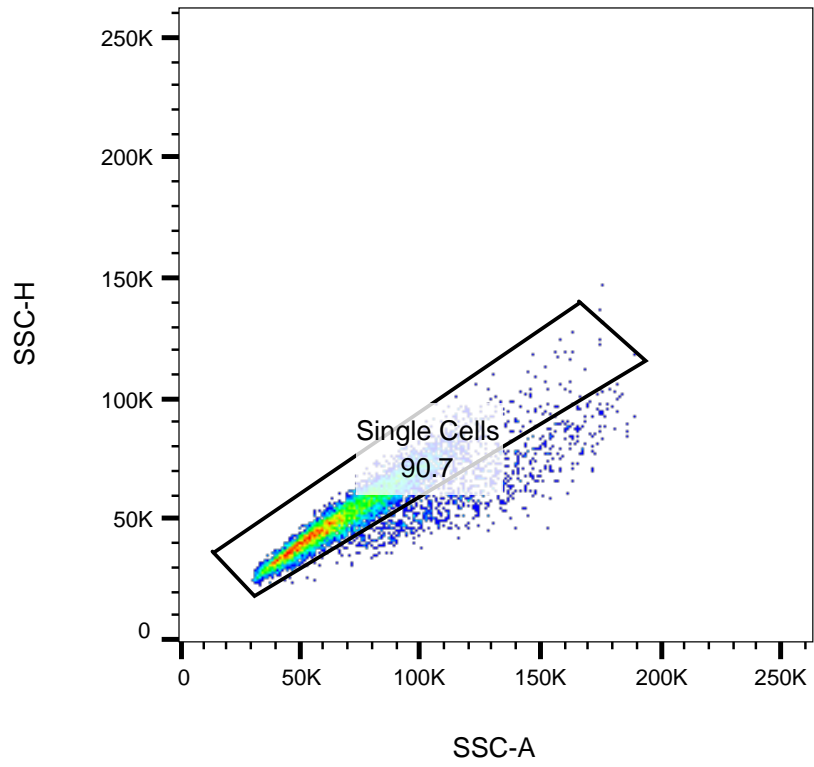
Specimen_001_Primed Plus UNC Rep1_002.fcs
Single Cells
8891



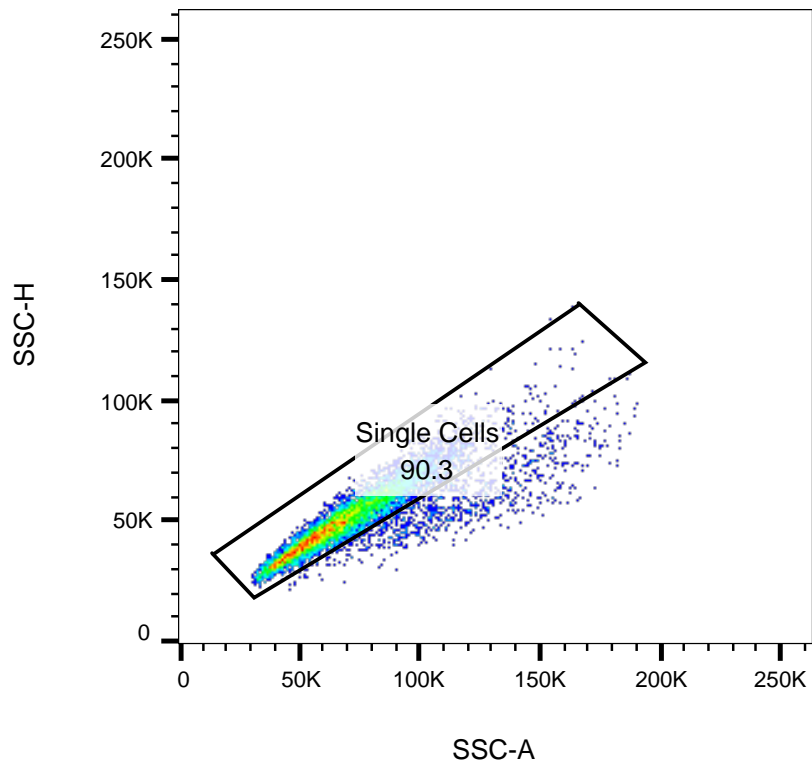
Specimen_001_Primered No UNC Rep2_003.fcs
Single Cells
8829



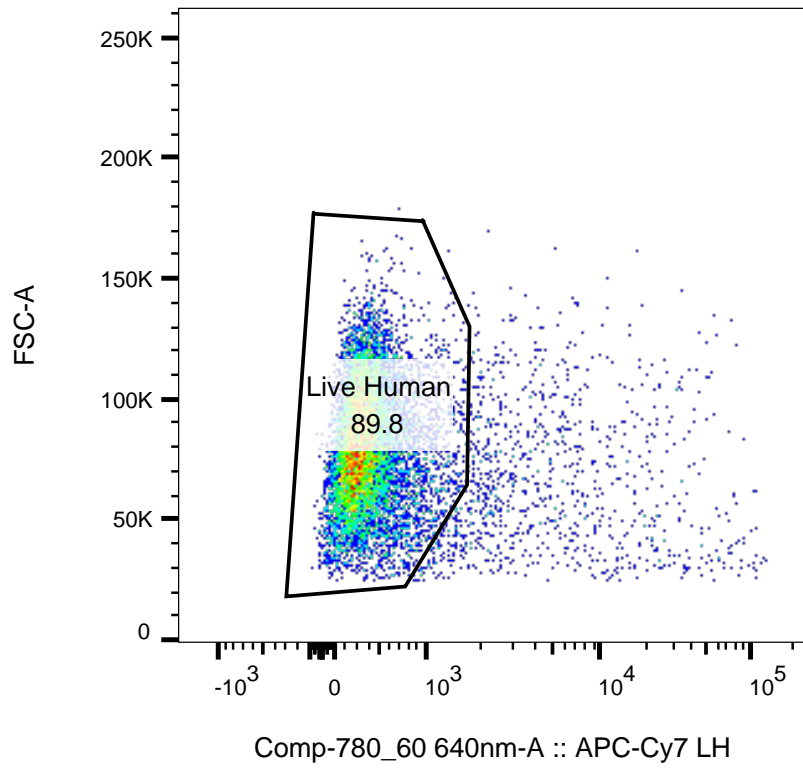
Specimen_001_Primer Plus UNC Rep2_004.fcs
Single Cells
10672



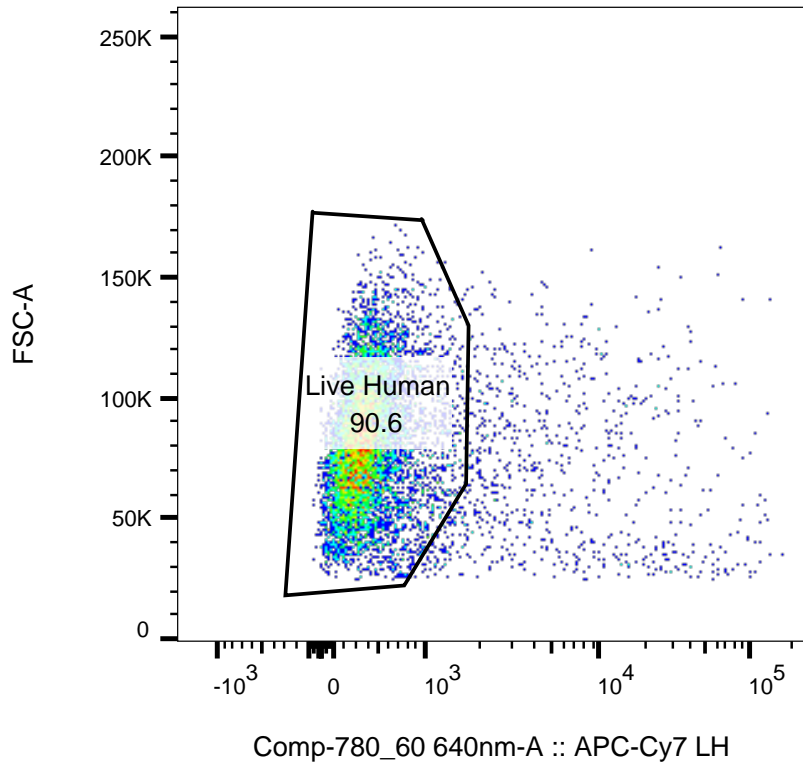
Specimen_001_Primed Plus No UNC Rep3_005.fcs
Single Cells
8315



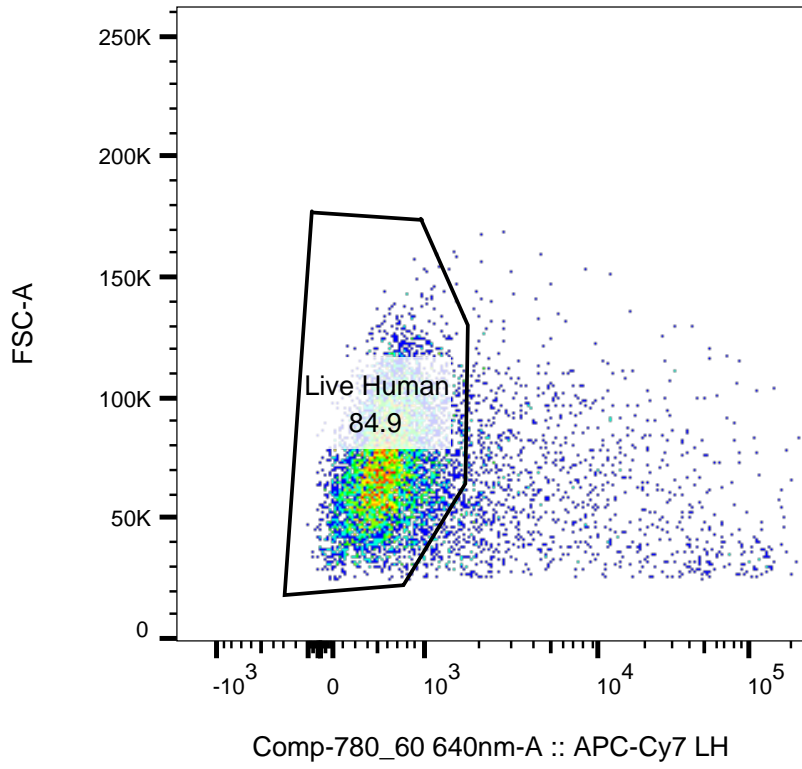
Specimen_001_Primed Plus UNC Rep3_006.fcs
Single Cells
8670



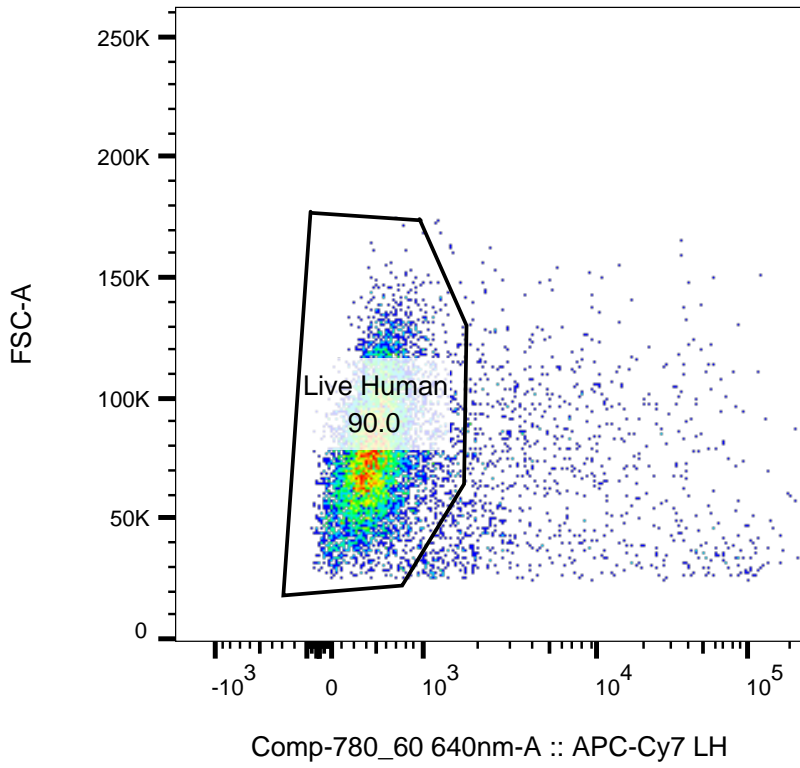
Specimen_001_Primered No UNC Rep1_001.fcs
Single Cells
9742



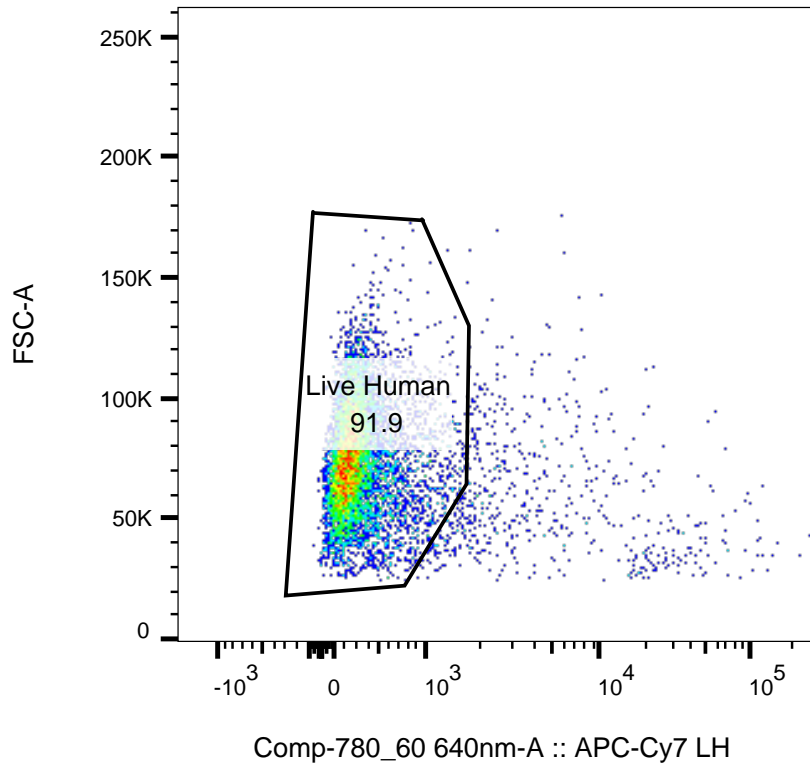
Specimen_001_Primer Plus UNC Rep1_002.fcs
Single Cells
8514



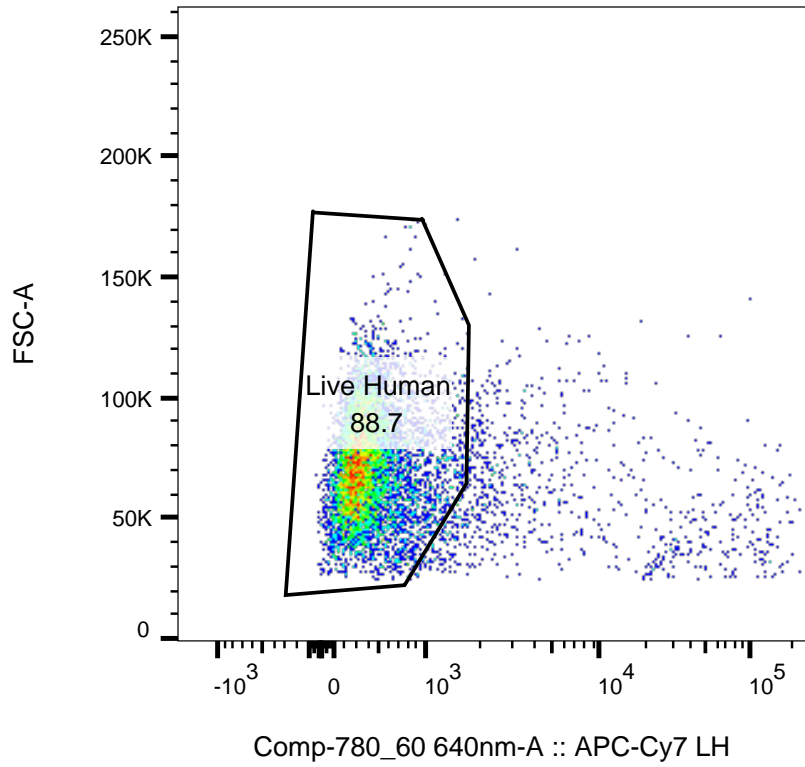
Specimen_001_Primerd No UNC Rep2_003.fcs
Single Cells
8213



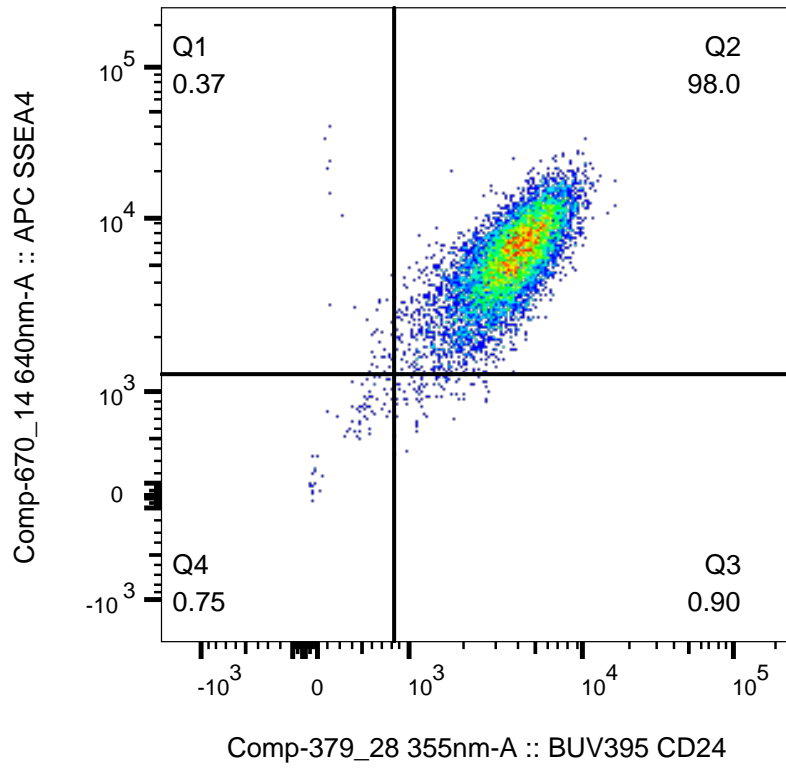
Specimen_001_Primer Plus UNC Rep2_004.fcs
Single Cells
10085



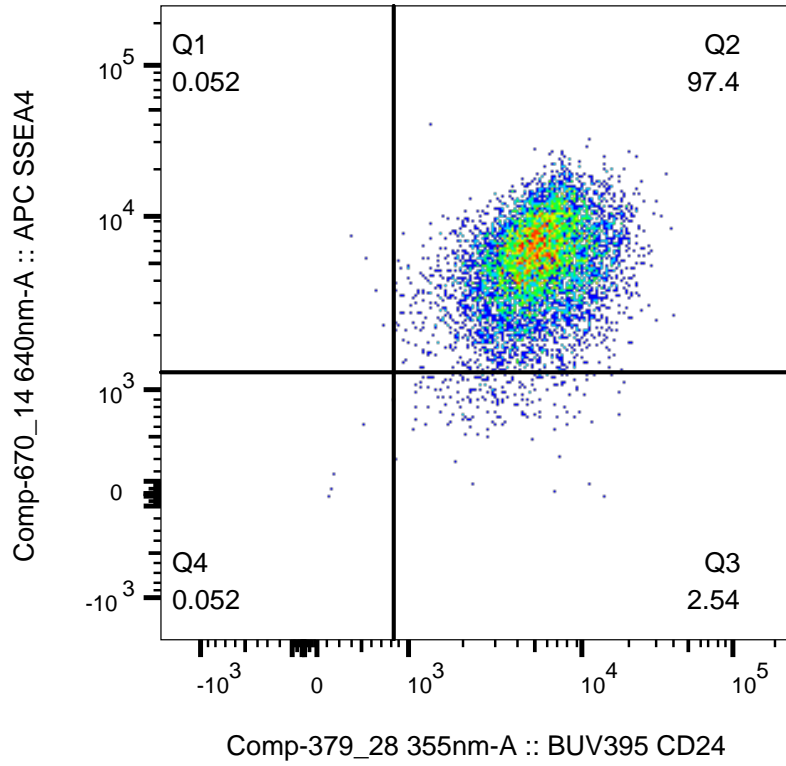
Specimen_001_Primer Plus No UNC Rep3_005.fcs
Single Cells
7538



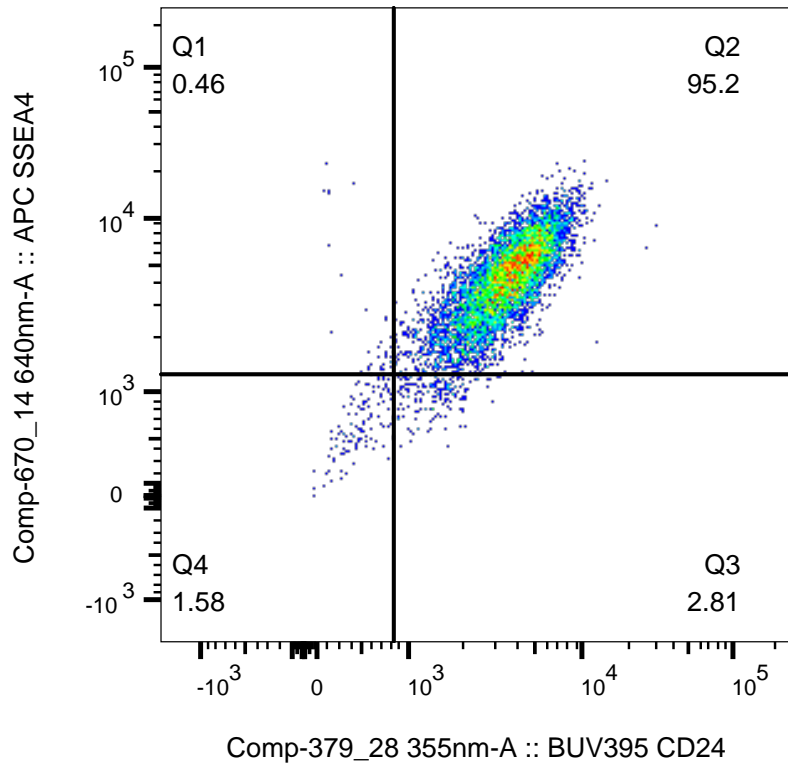
Specimen_001_Primerd Plus UNC Rep3_006.fcs
Single Cells
7827



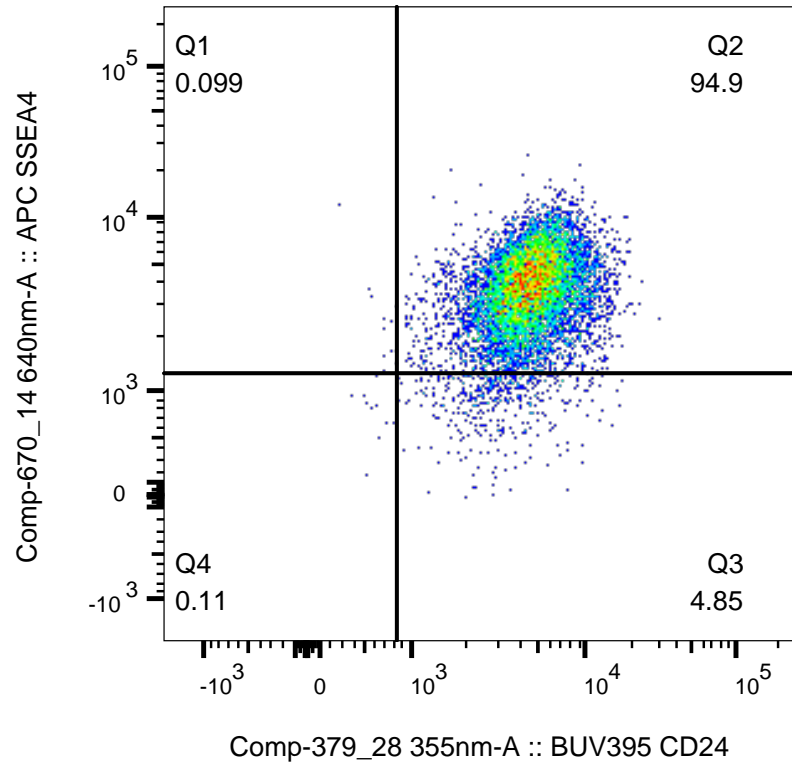
Specimen_001_Primered No UNC Rep1_001.fcs
Live Human
8745



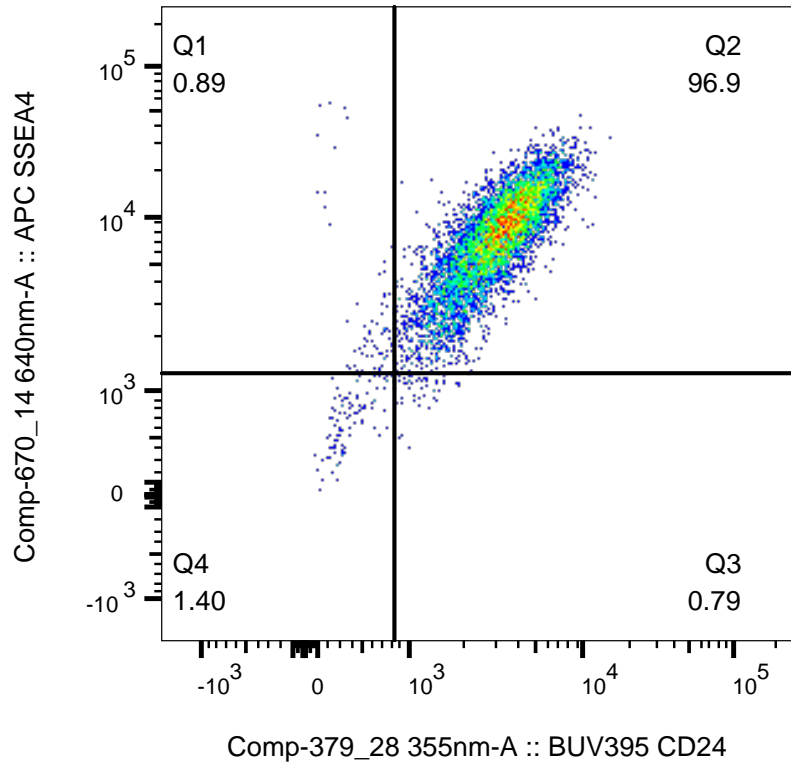
Specimen_001_Primed Plus UNC Rep1_002.fcs
Live Human
7711



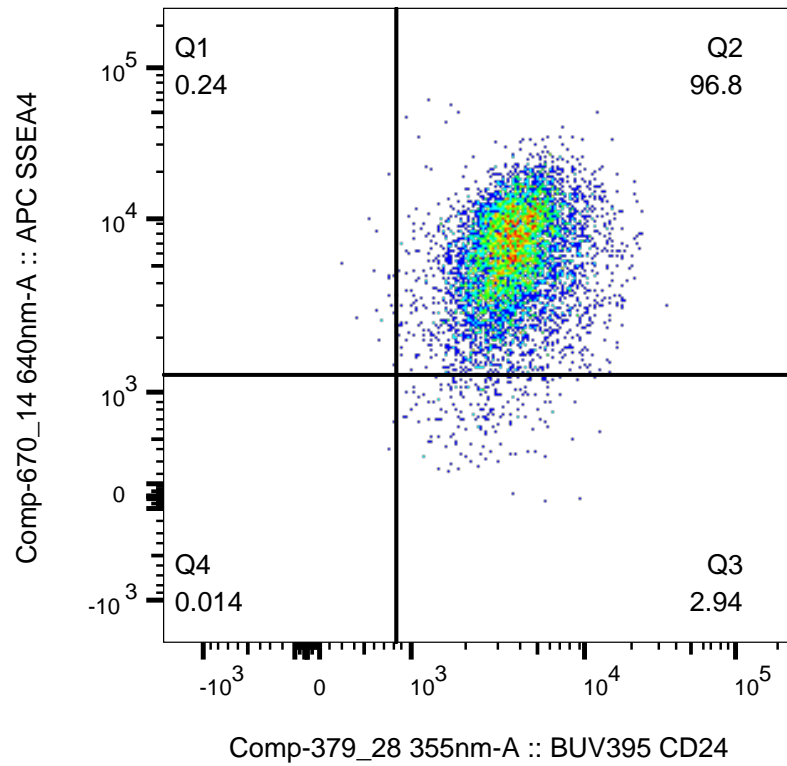
Specimen_001_Primered No UNC Rep2_003.fcs
Live Human
6974



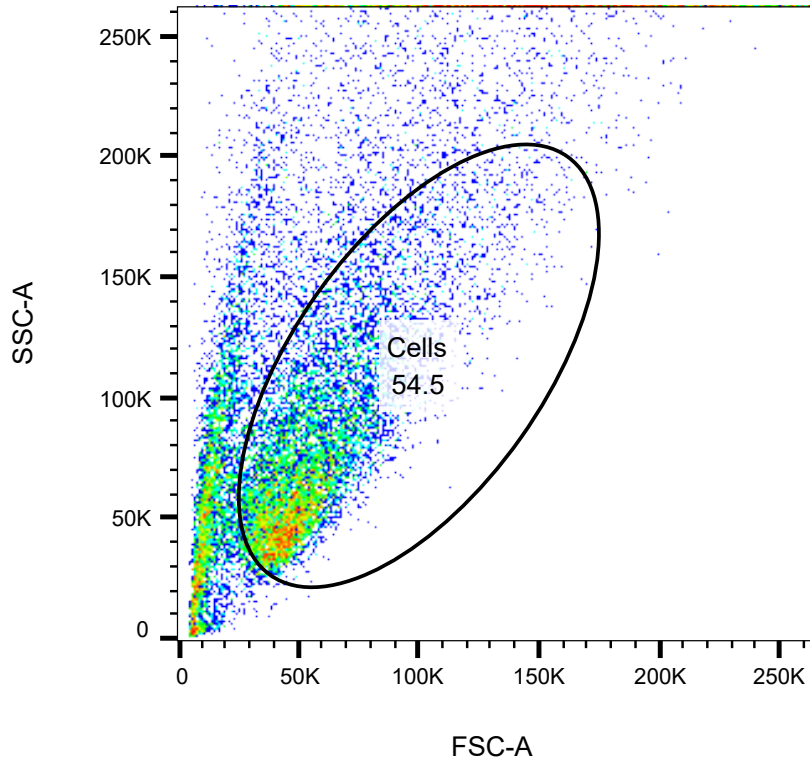
Specimen_001_Primer Plus UNC Rep2_004.fcs
Live Human
9077



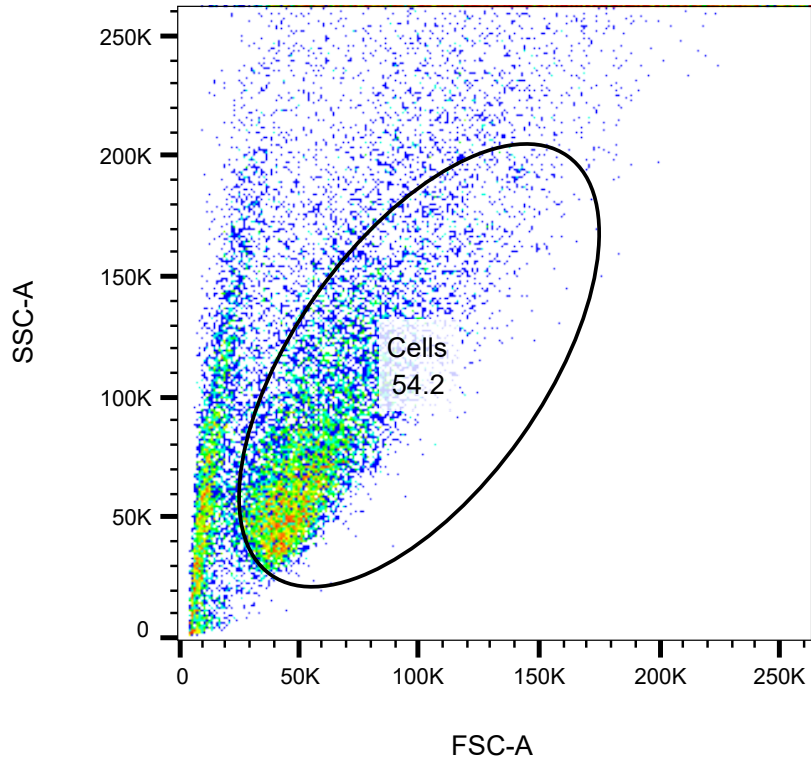
Specimen_001_Primer Plus No UNC Rep3_005.fcs
Live Human
6930



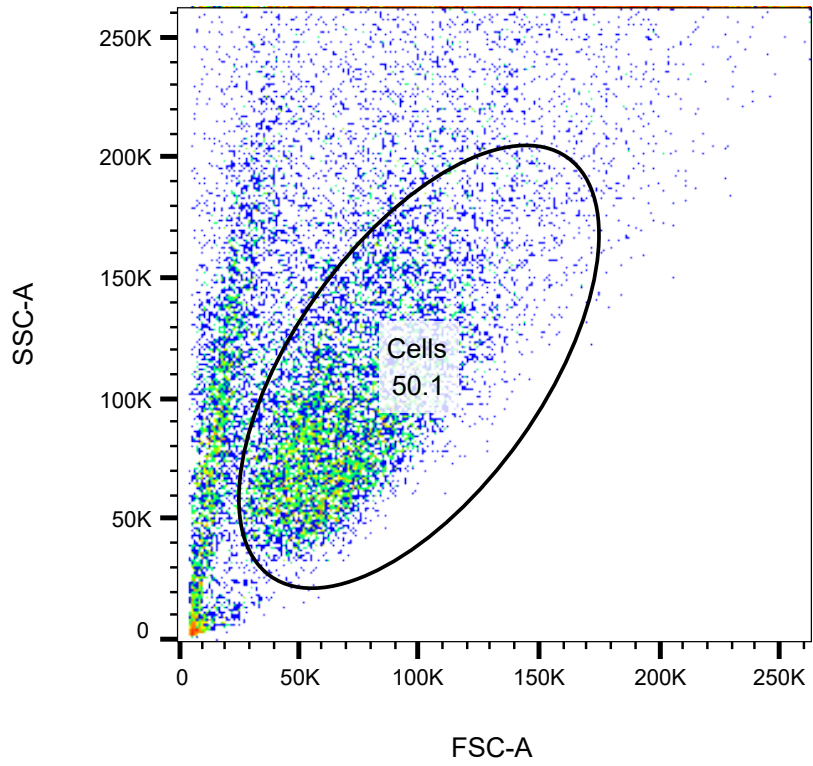
Specimen_001_Primed Plus UNC Rep3_006.fcs
Live Human
6941



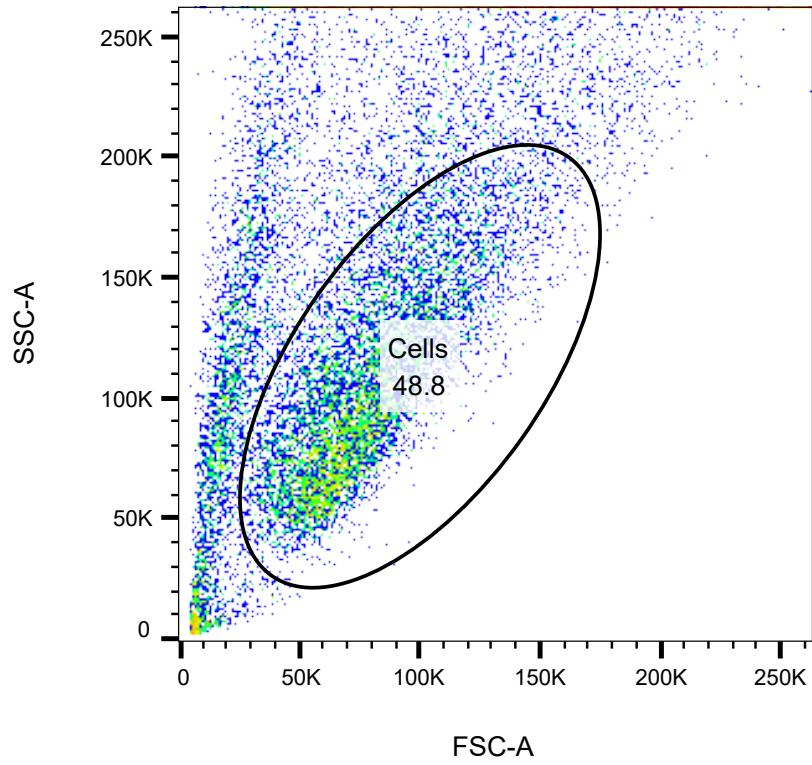
Specimen_001_Naive No UNC Rep1_002.fcs
Ungated
20000



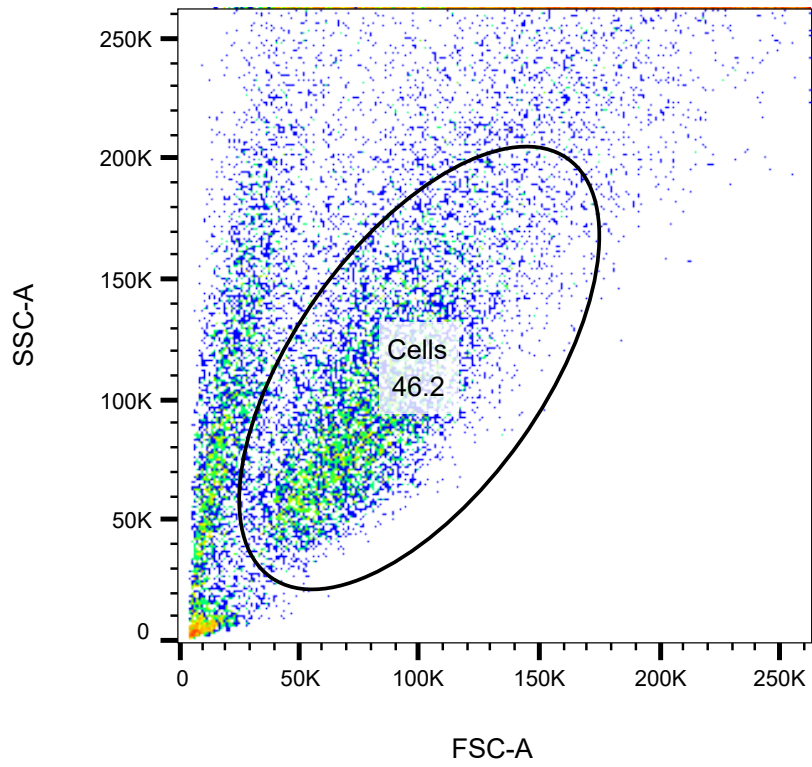
Specimen_001_Naive with UNC Rep1_004.fcs
Ungated
20000



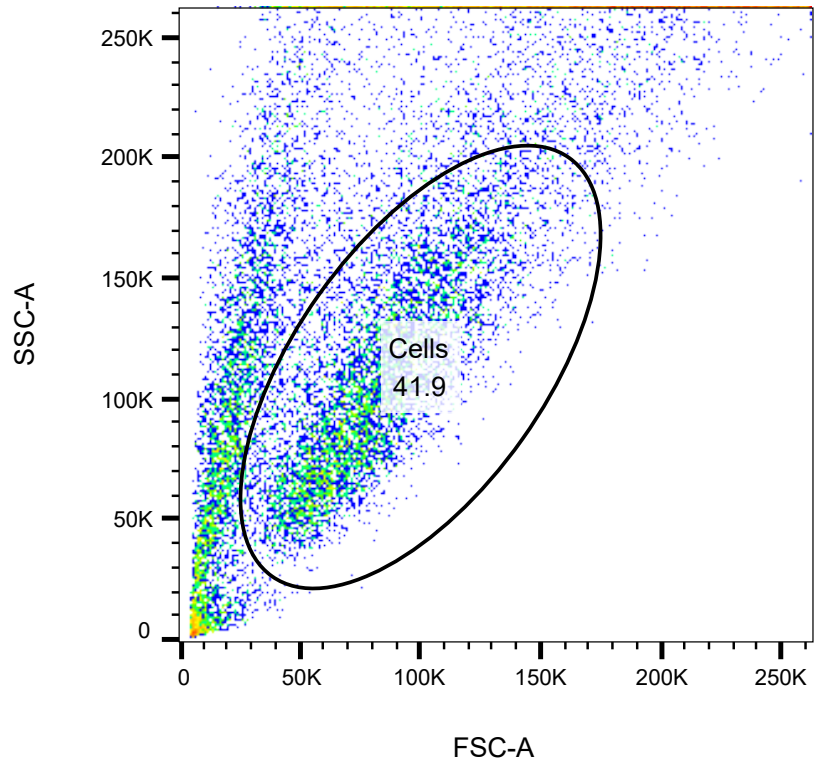
Specimen_001_Naive No UNC Rep2_001.fcs
Ungated
20000



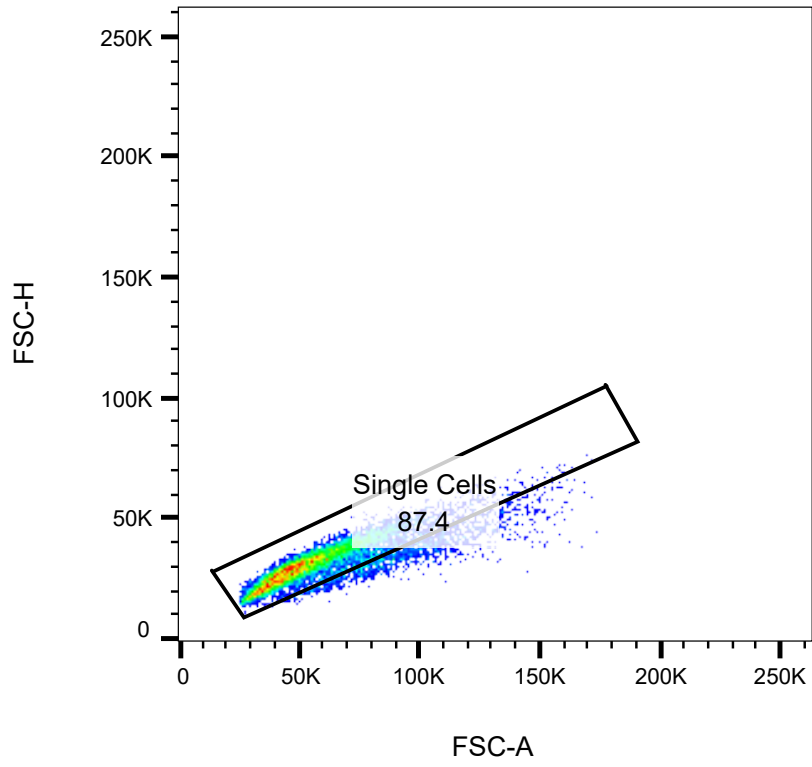
Specimen_001_Naive with UNC Rep2_002.fcs
Ungated
20000



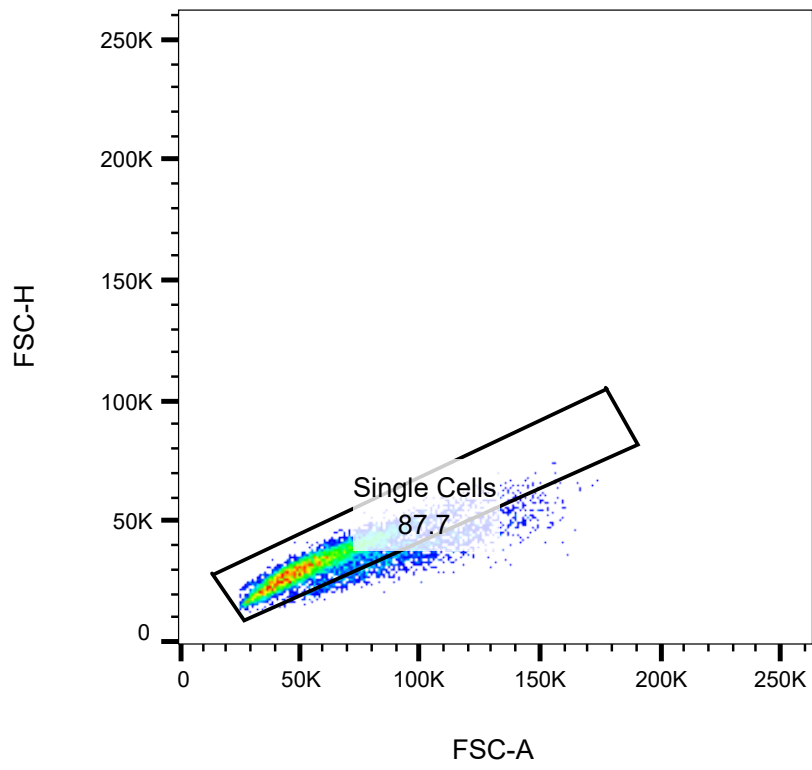
Specimen_001_Naive No UNC Rep3_003.fcs
Ungated
20000



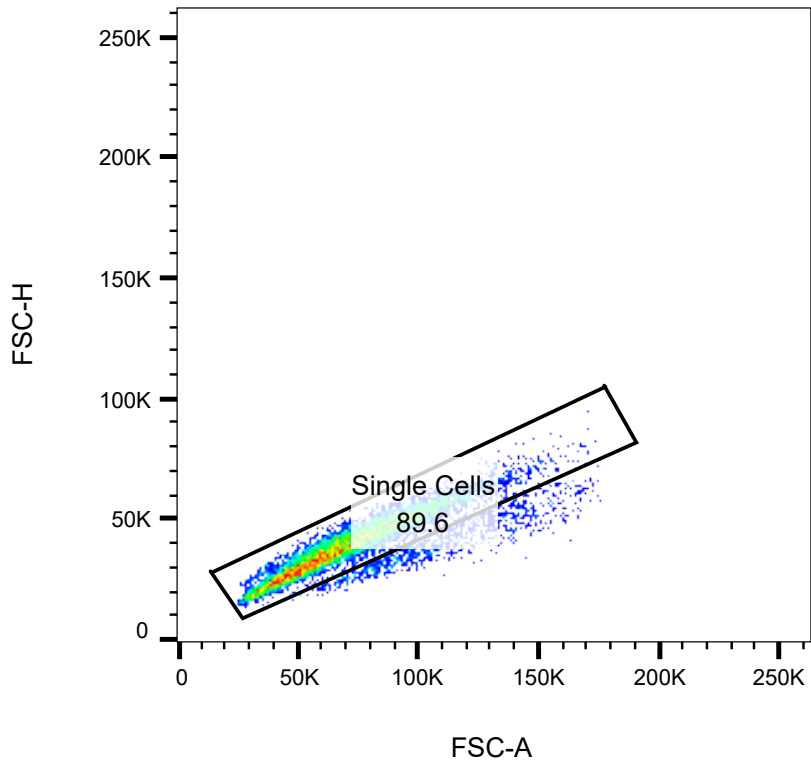
Specimen_001_Naive with UNC Rep3_004.fcs
Ungated
20000



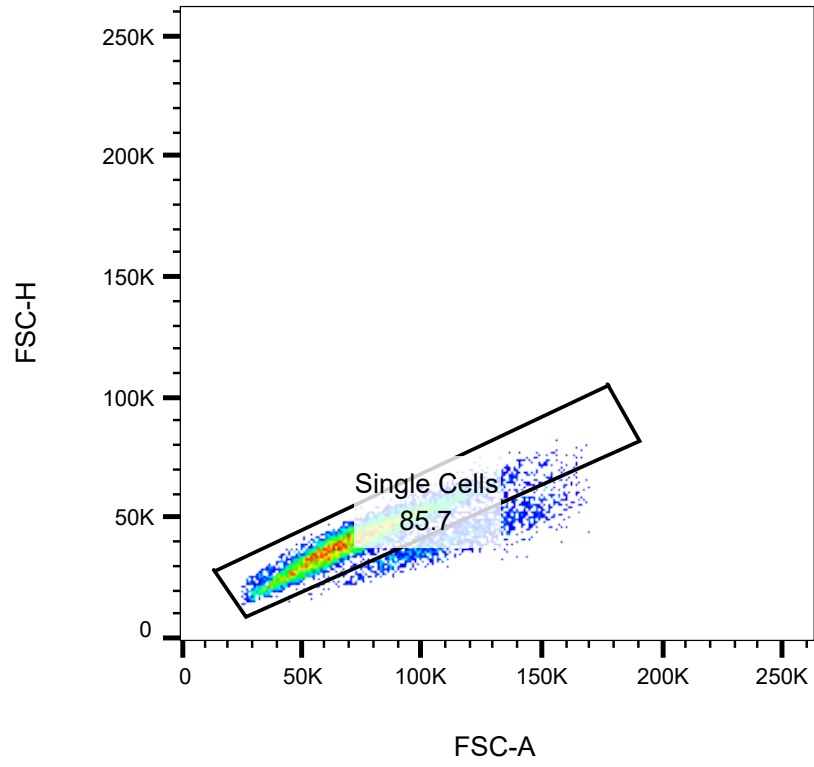
Specimen_001_Naive No UNC Rep1_002.fcs
Cells
10902



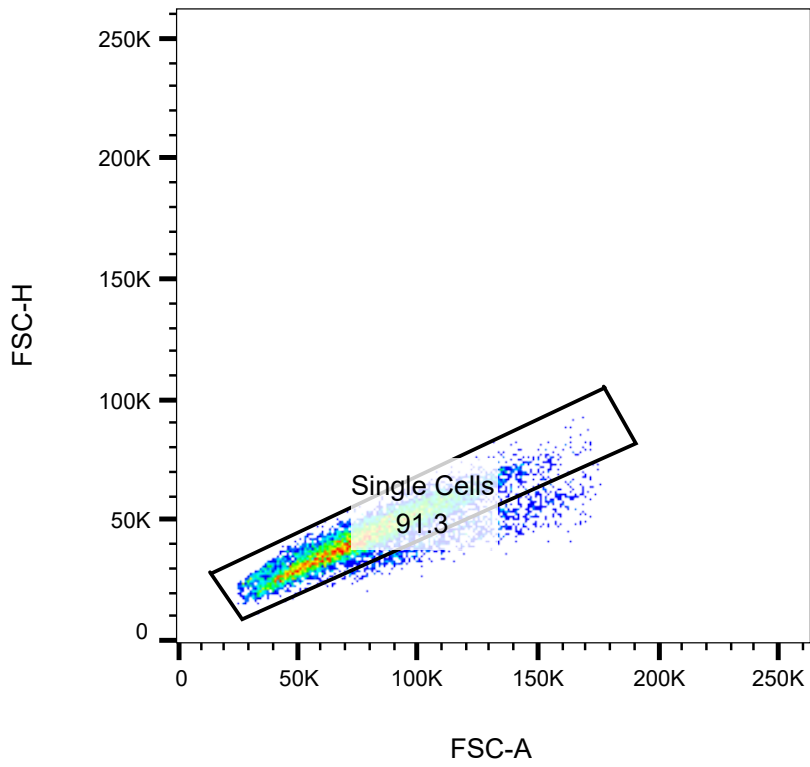
Specimen_001_Naive with UNC Rep1_004.fcs
Cells
10838



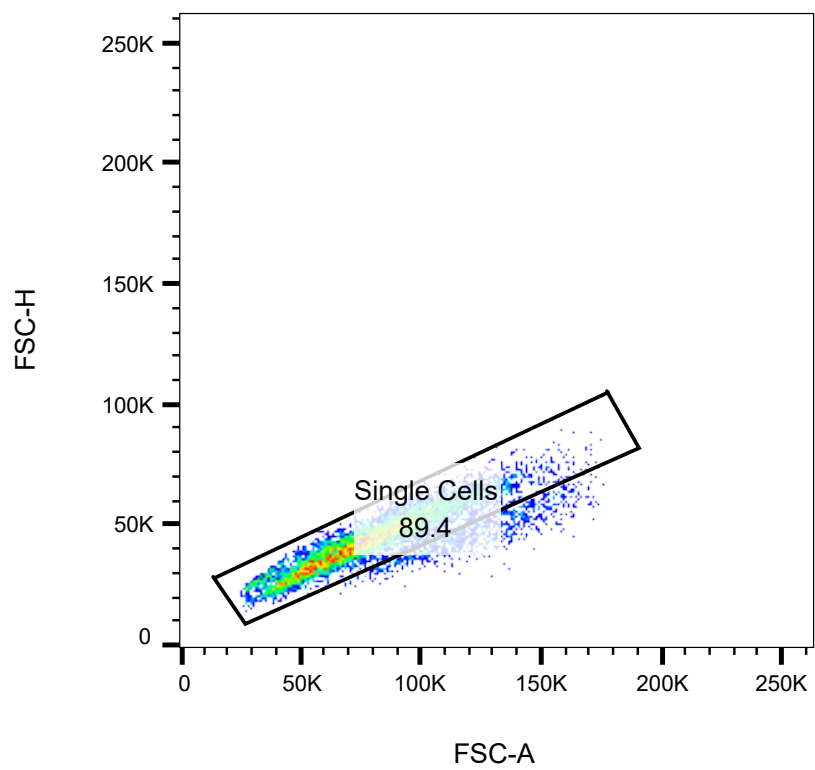
Specimen_001_Naive No UNC Rep2_001.fcs
Cells
10029



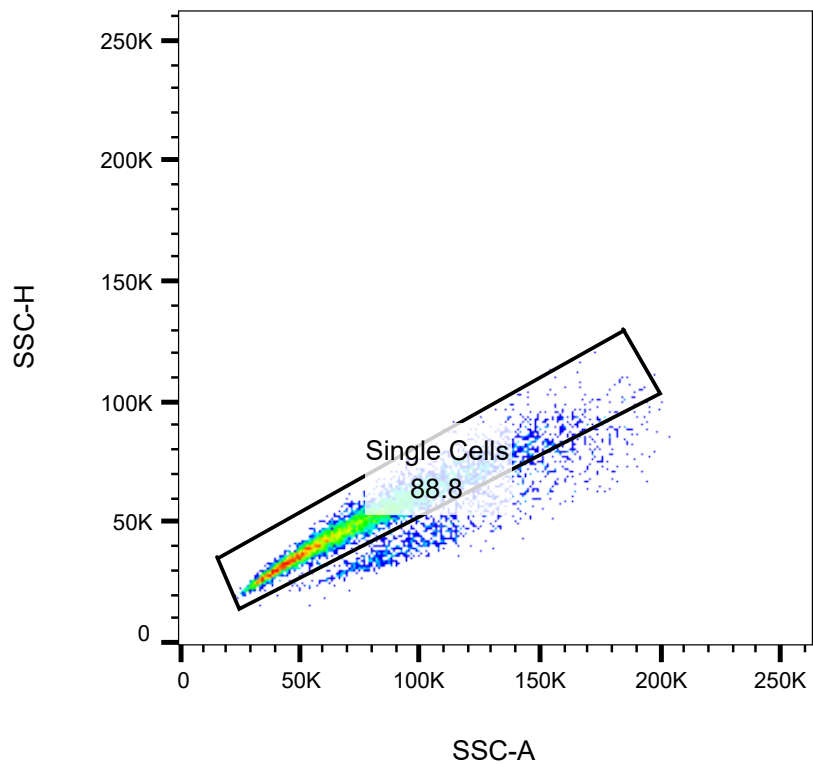
Specimen_001_Naive with UNC Rep2_002.fcs
Cells
9765



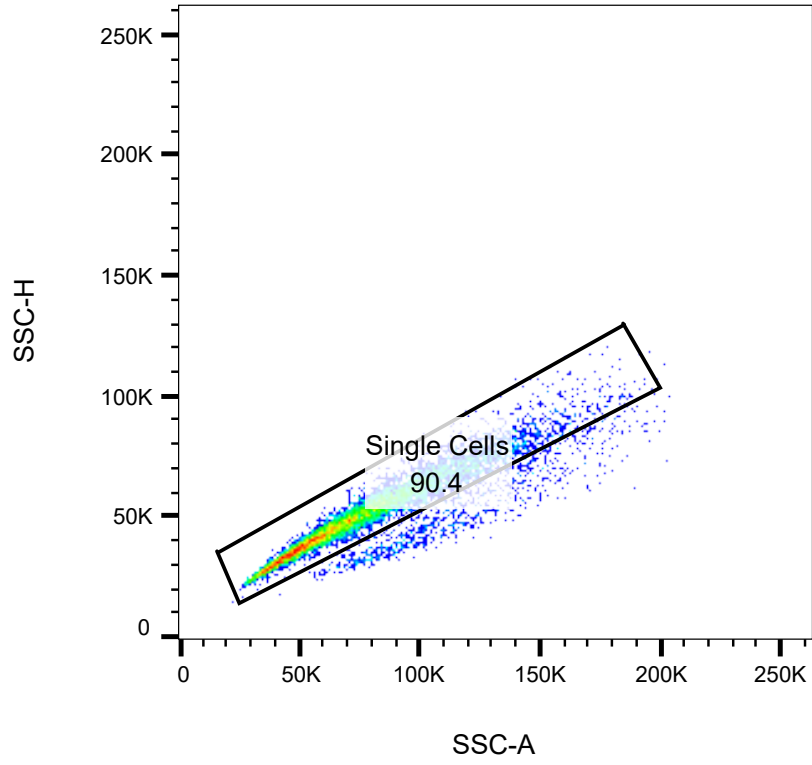
Specimen_001_Naive No UNC Rep3_003.fcs
Cells
9243



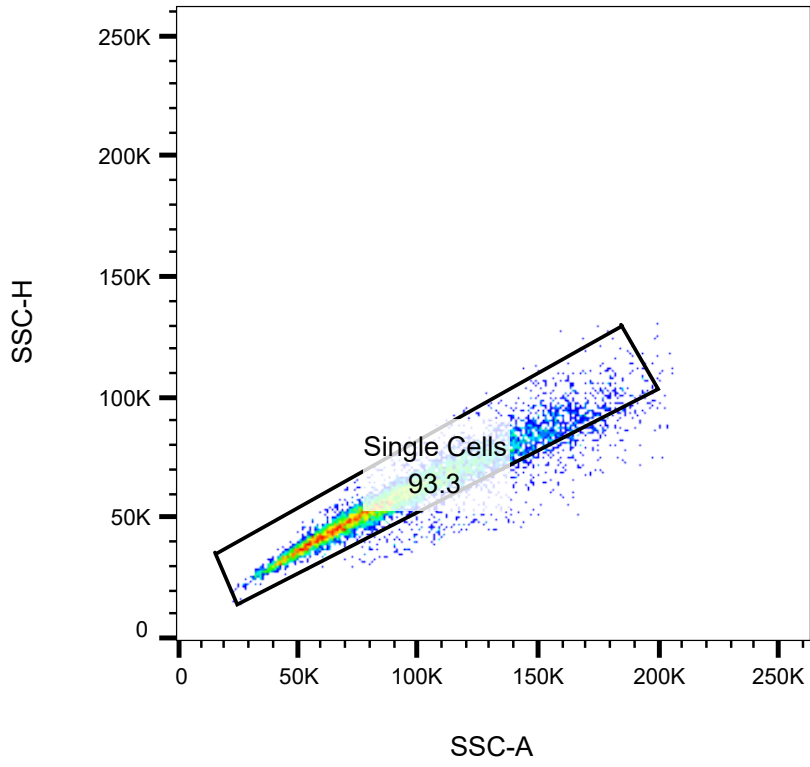
Specimen_001_Naive with UNC Rep3_004.fcs
Cells
8383



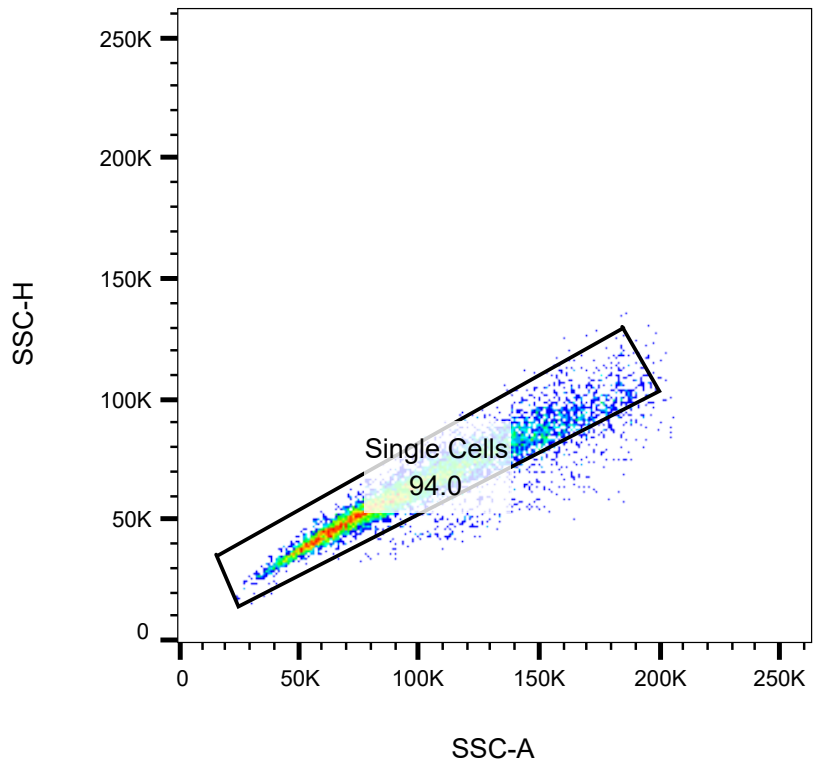
Specimen_001_Naive No UNC Rep1_002.fcs
Single Cells
9533



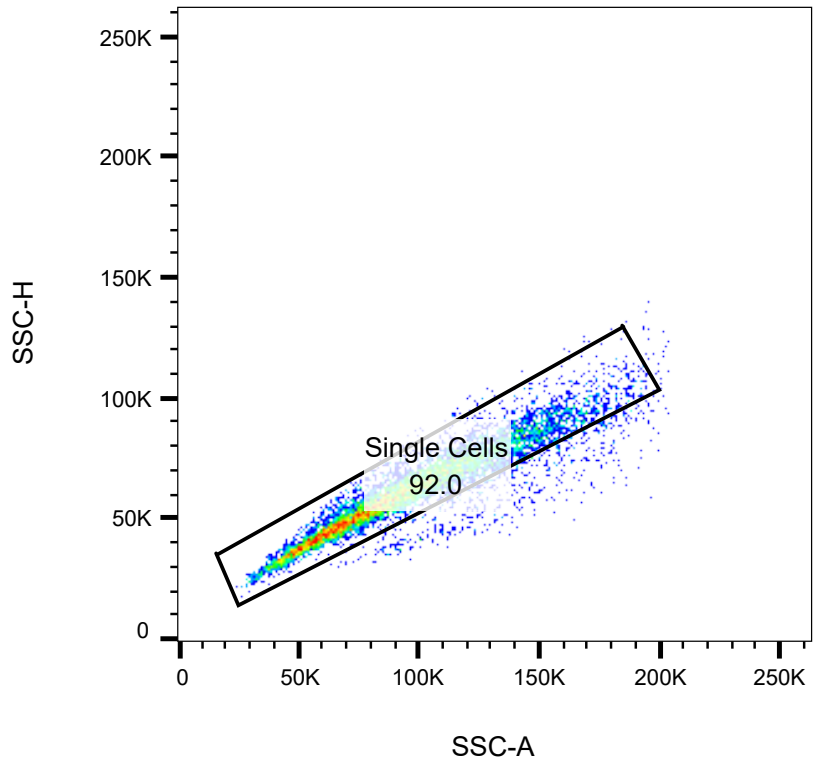
Specimen_001_Naive with UNC Rep1_004.fcs
Single Cells
9502



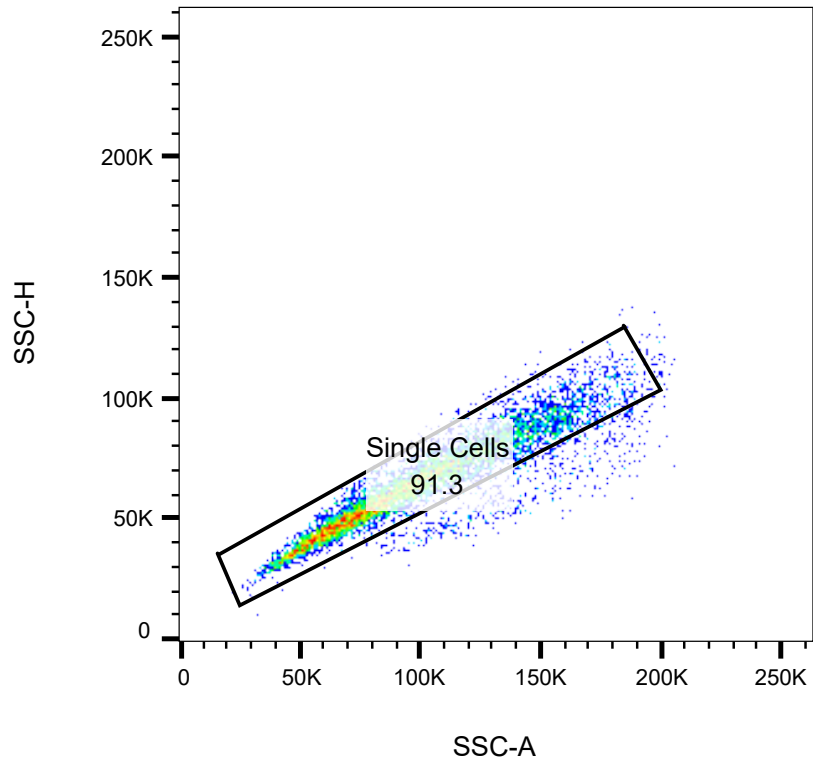
Specimen_001_Naive No UNC Rep2_001.fcs
Single Cells
8990



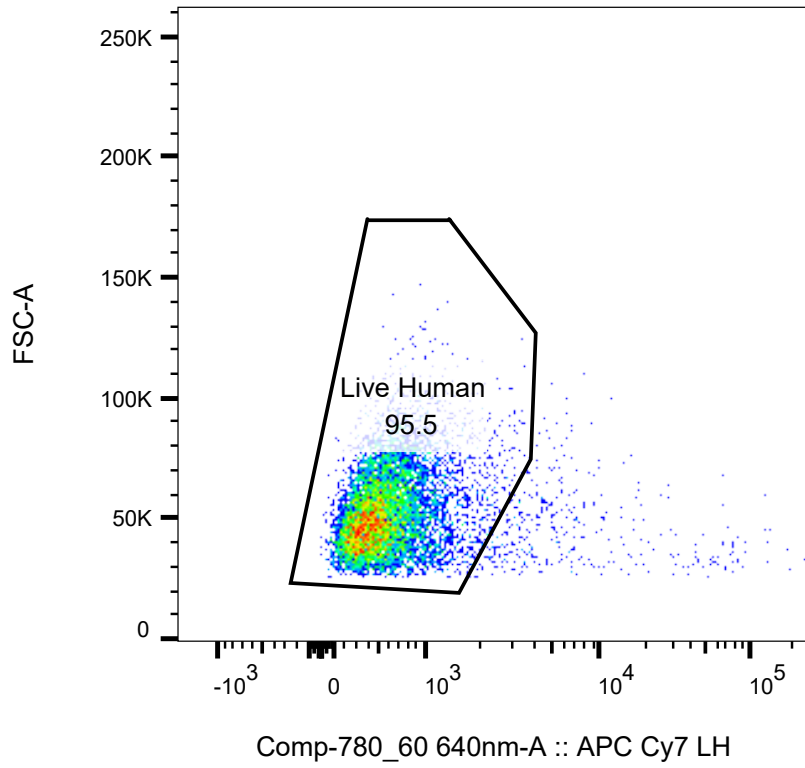
Specimen_001_Naive with UNC Rep2_002.fcs
Single Cells
8369



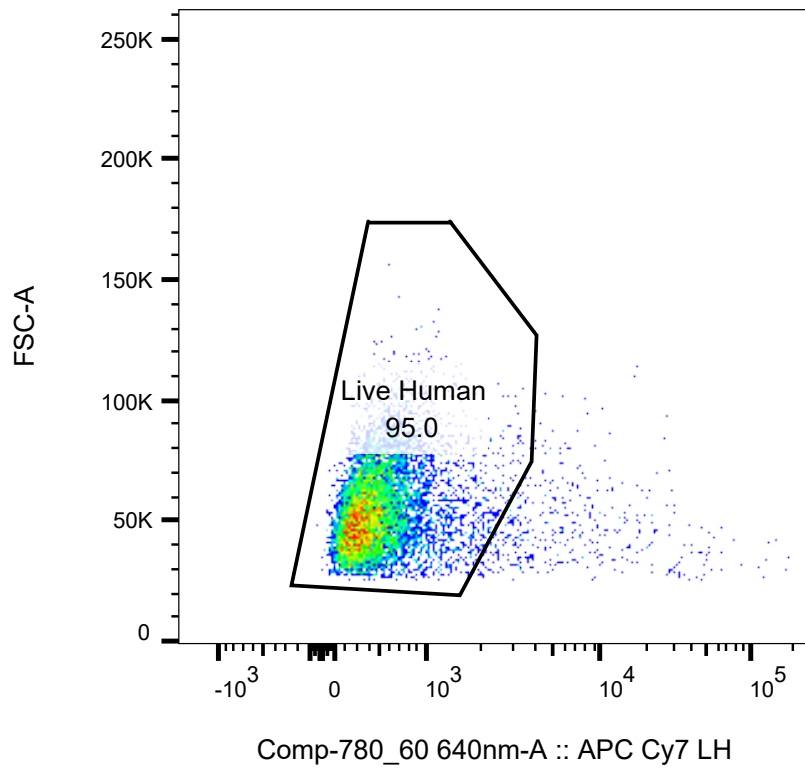
Specimen_001_Naive No UNC Rep3_003.fcs
Single Cells
8435



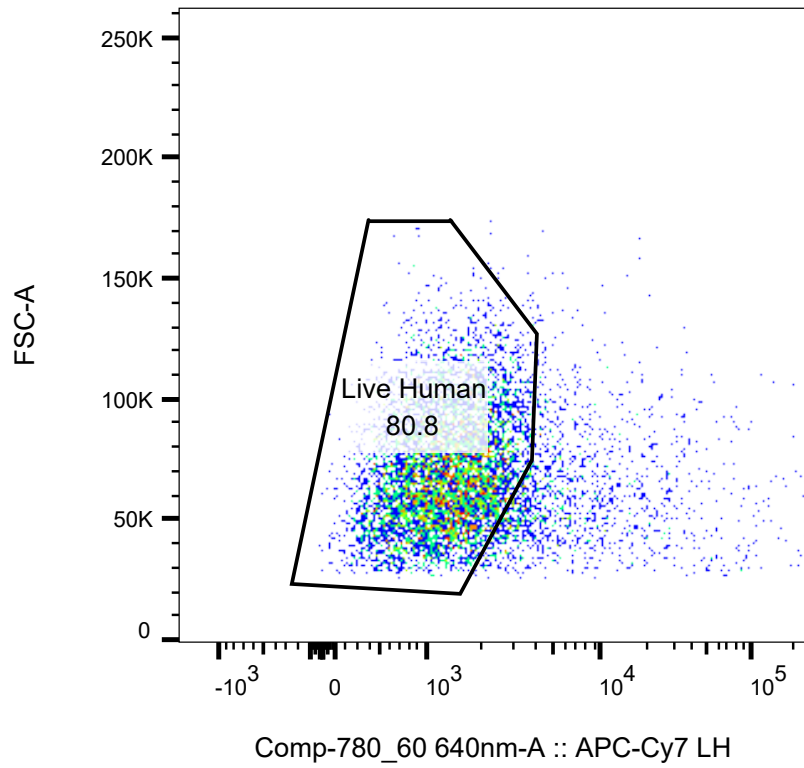
Specimen_001_Naive with UNC Rep3_004.fcs
Single Cells
7498



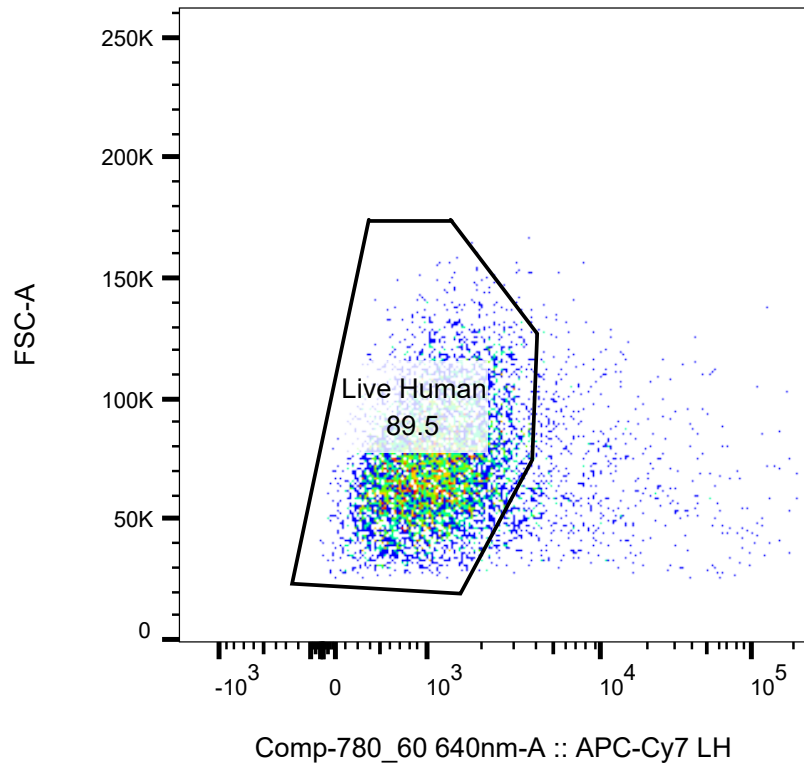
Specimen_001_Naive No UNC Rep1_002.fcs
Single Cells
8464



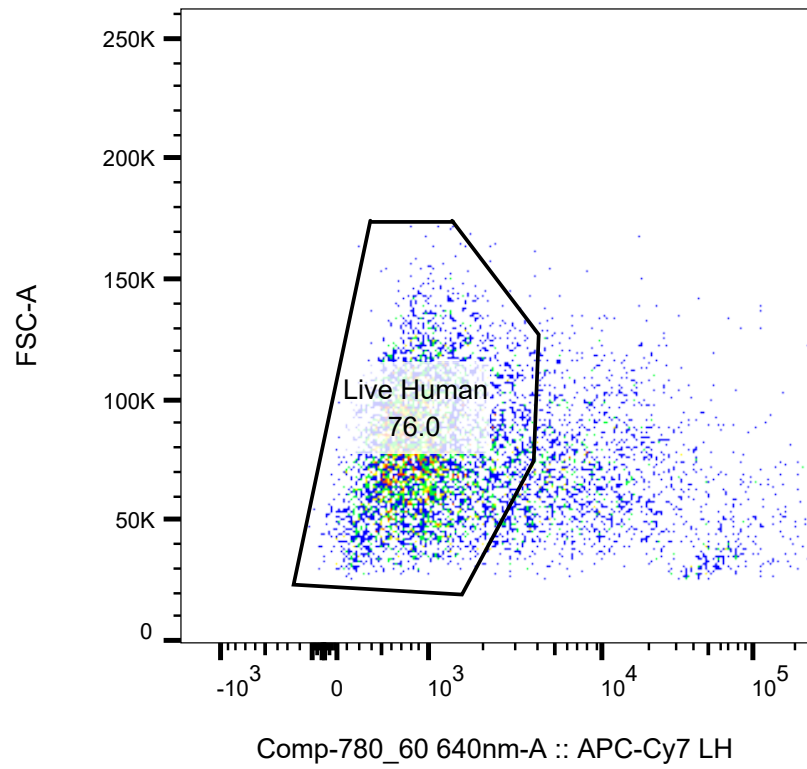
Specimen_001_Naive with UNC Rep1_004.fcs
Single Cells
8588



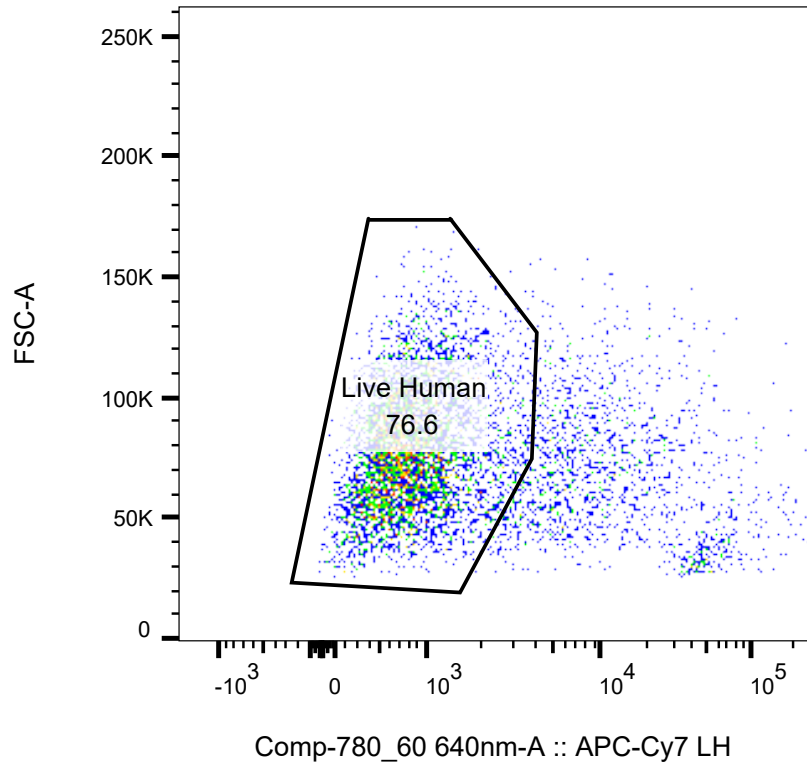
Specimen_001_Naive No UNC Rep2_001.fcs
Single Cells
8391



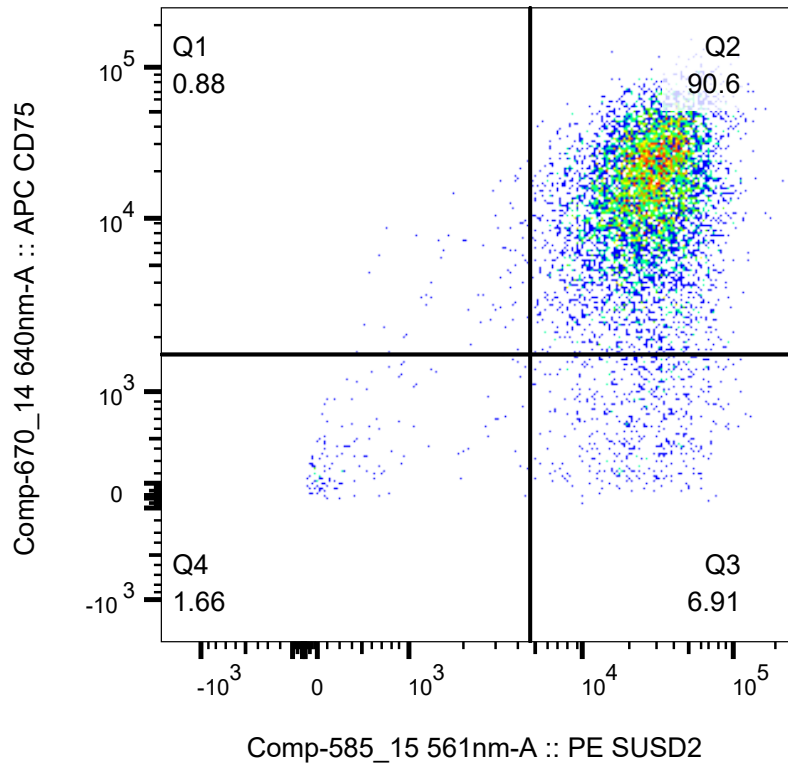
Specimen_001_Naive with UNC Rep2_002.fcs
Single Cells
7871



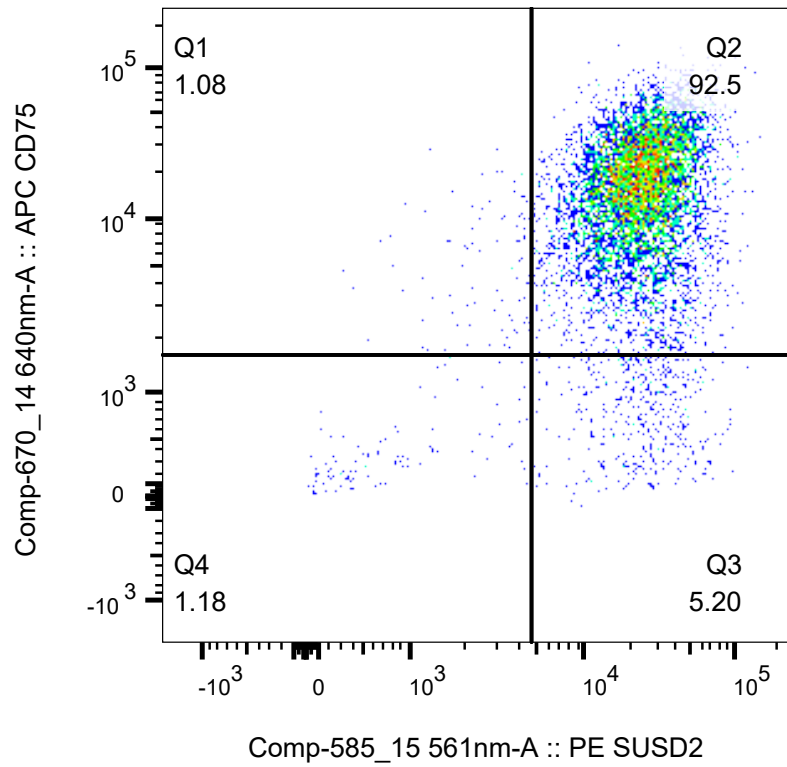
Specimen_001_Naive No UNC Rep3_003.fcs
Single Cells
7764



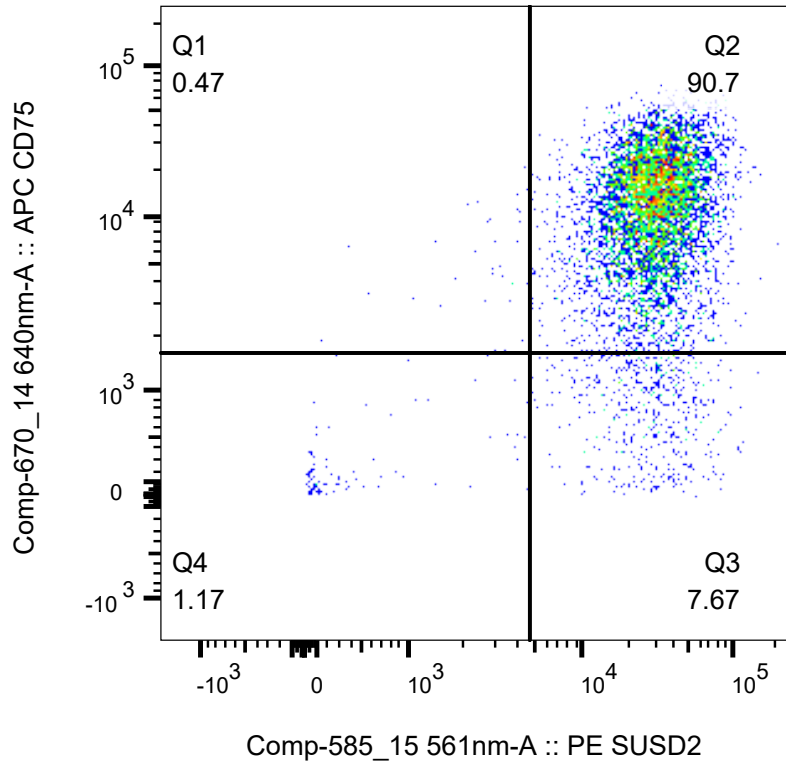
Specimen_001_Naive with UNC Rep3_004.fcs
Single Cells
6842



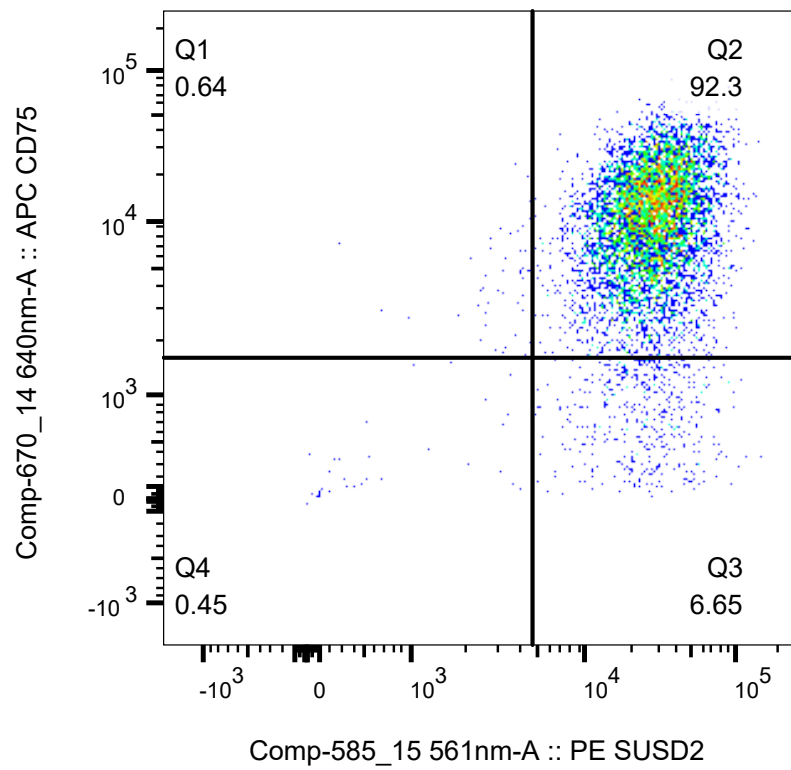
Specimen_001_Naive No UNC Rep1_002.fcs
Live Human
8086



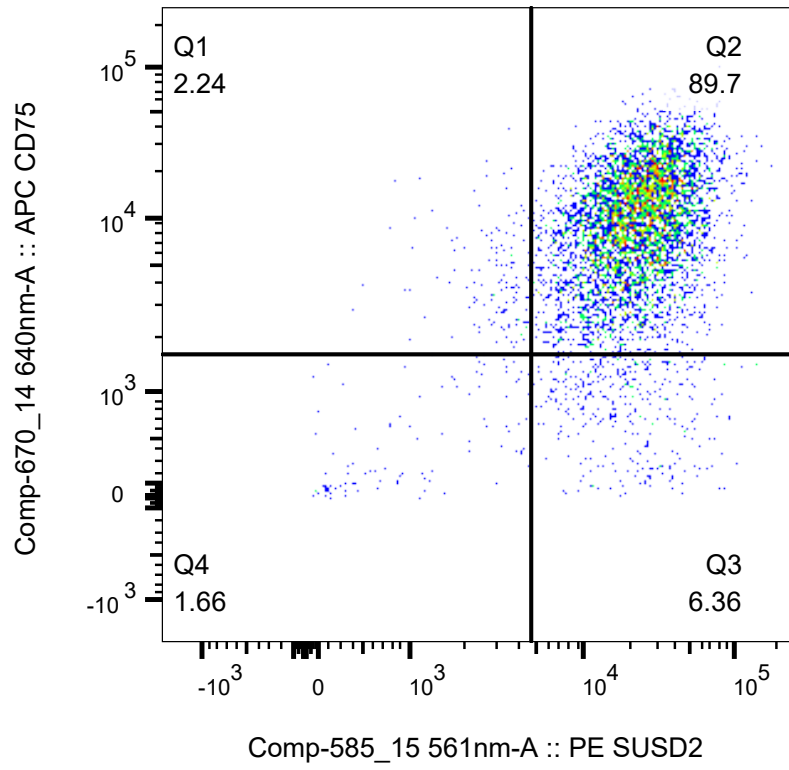
Specimen_001_Naive with UNC Rep1_004.fcs
Live Human
8158



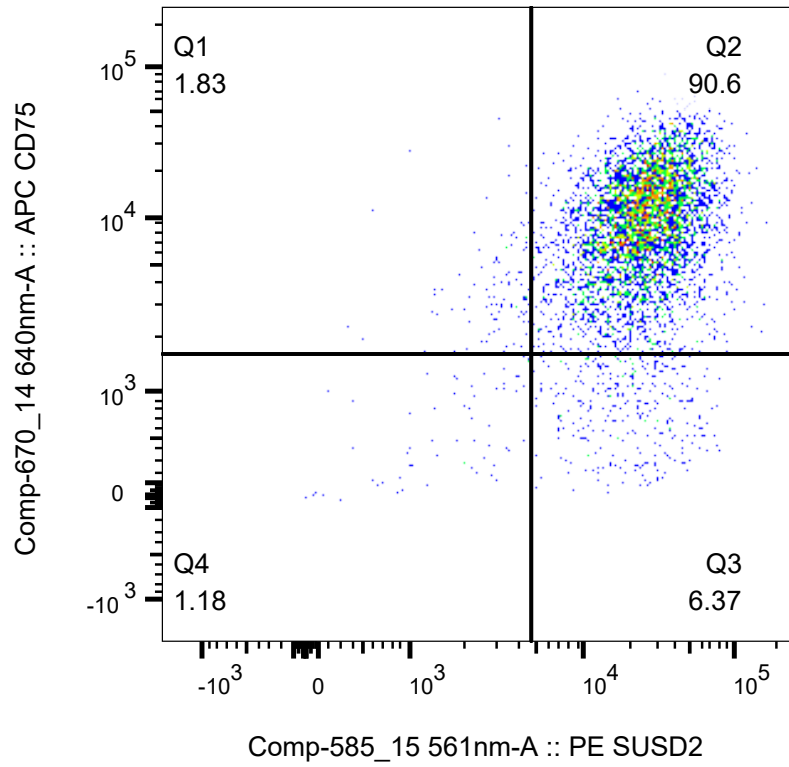
Specimen_001_Naive No UNC Rep2_001.fcs
Live Human
6778



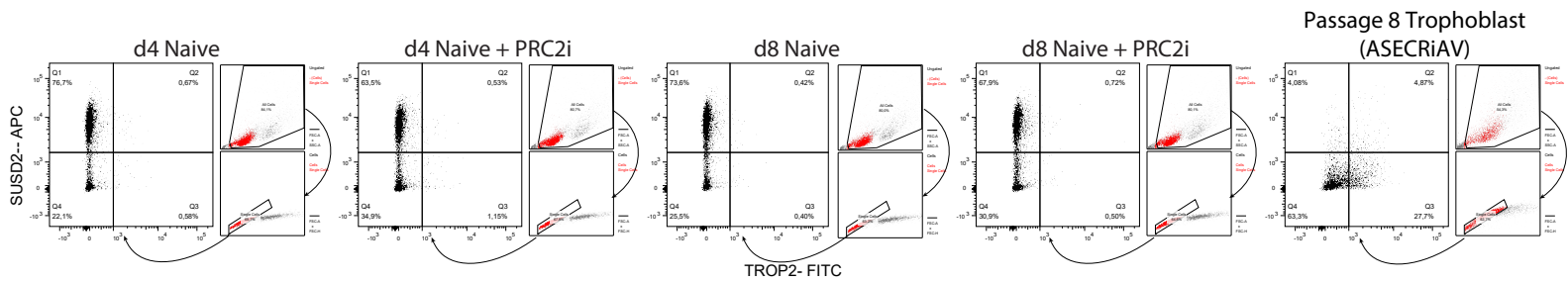
Specimen_001_Naive with UNC Rep2_002.fcs
Live Human
7041



Specimen_001_Naive No UNC Rep3_003.fcs
Live Human
5898

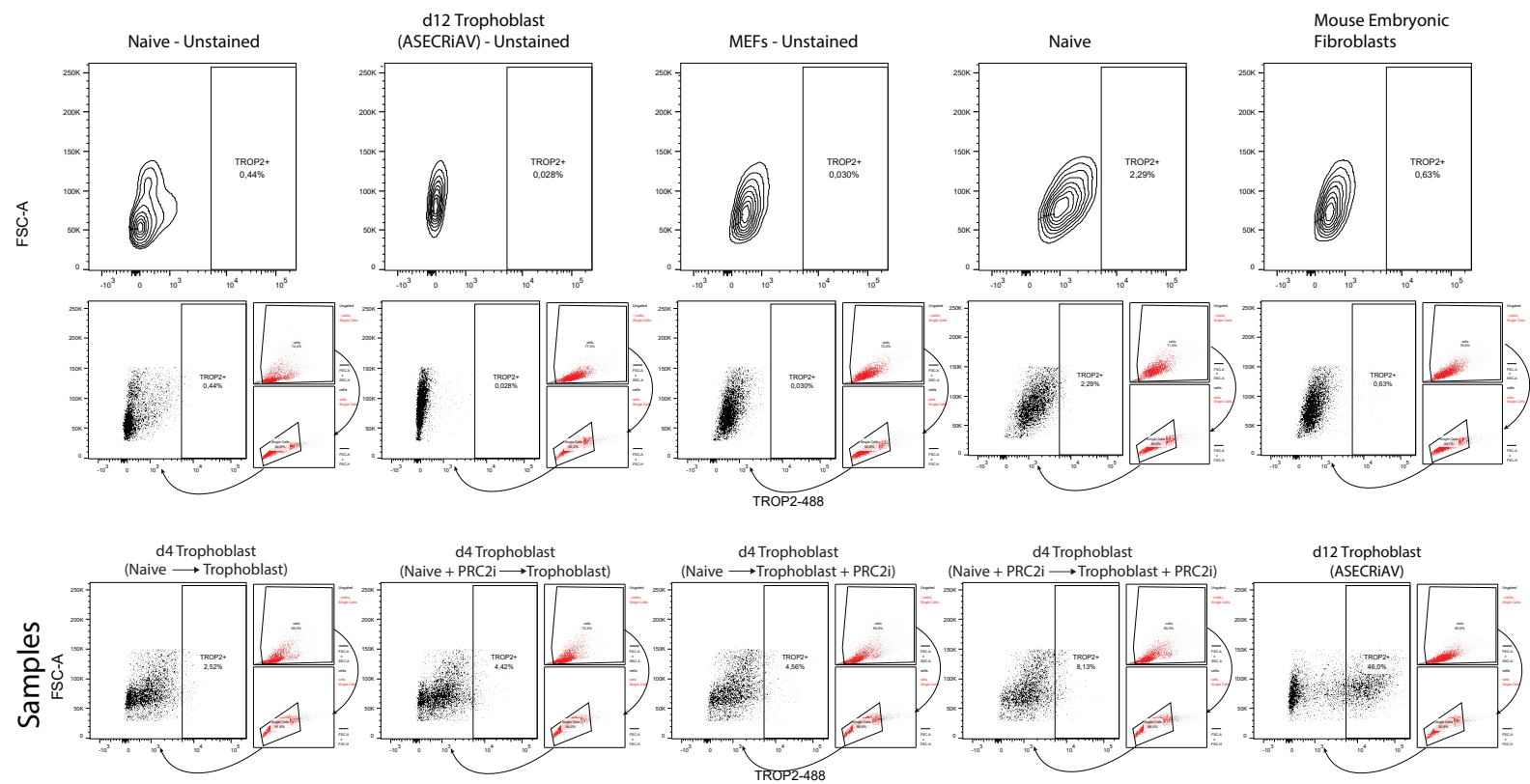


Specimen_001_Naive with UNC Rep3_004.fcs
Live Human
5240



Gating strategy: Forward scatter area (FSC-A) and side scatter area (SSC-A) were used to select for cells from debris (gate labeled all cells, top right). Then FSC-A and forward scatter height (FSC-H) were used to separate single cells from multiplets (gate labeled as single cells, bottom right). The gated single cells were then used in the main plot.

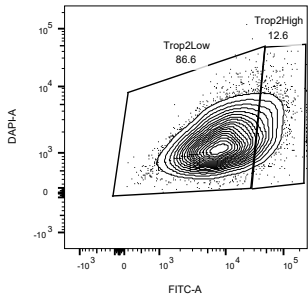
Extended Data Figure 5d



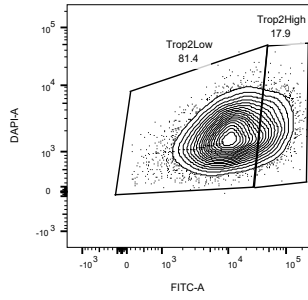
Gating strategy: Forward scatter area (FSC-A) and side scatter area (SSC-A) were used to select for cells from debris (gate labeled all cells, top right). Then FSC-A and forward scatter height (FSC-H) were used to separate single cells from multiplets (gate labeled as single cells, bottom right). The gated single cells were then used in the main plot.

Extended Data Figure 5i

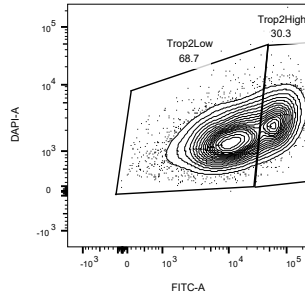
Experiment 1:



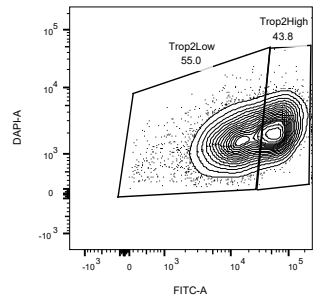
36hrs_blastoid_PRC1_NoPretreatment_withoutPRCI_004.fcs
Single Cells
9769



36hrs_blastoid_PRC1_PretreatedwithPRCI_002.fcs
Single Cells
10013

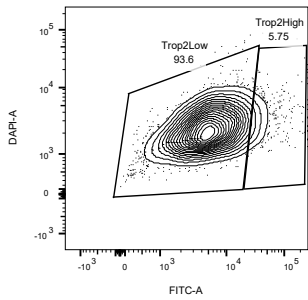


60hrs_blastoid_PRC1_001_NoPretreatment_withoutPRCI_003.fcs
Single Cells
8106

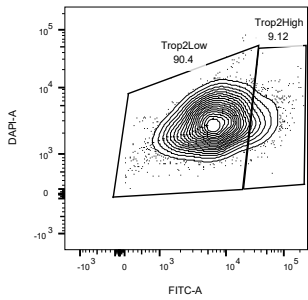


60hrs_blastoid_PRC1_001_Pretreated_withPRCI_005.fcs
Single Cells
9364

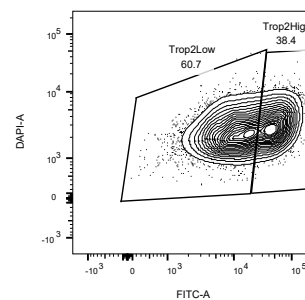
Experiment 2:



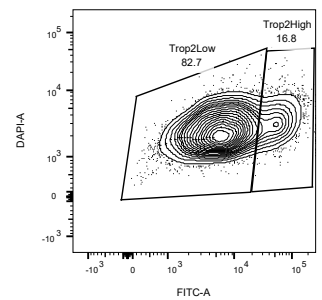
Specimen_001_36hours_Control_002.fcs
Single Cells
5580



Specimen_001_36hours_PRC2_003.fcs
Single Cells
6263

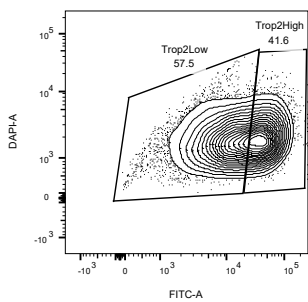


Specimen_001_60hours_PRC2_003.fcs
Single Cells
8276

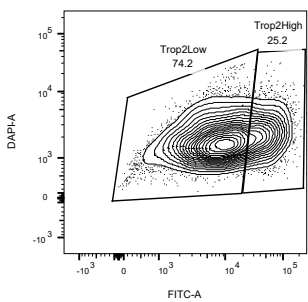


Specimen_001_60hours_WT_002.fcs
Single Cells
8596

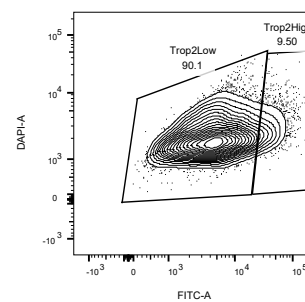
Experiment 3:



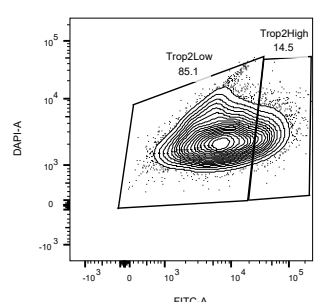
20211211_60hours_prc2_002.fcs
Single Cells
11206



20211211_60hours_wt_001.fcs
Single Cells
9500



Specimen_001_36hours_wt_002.fcs
Single Cells
9827



Specimen_001_36hours_prc2_003.fcs
Single Cells
11158