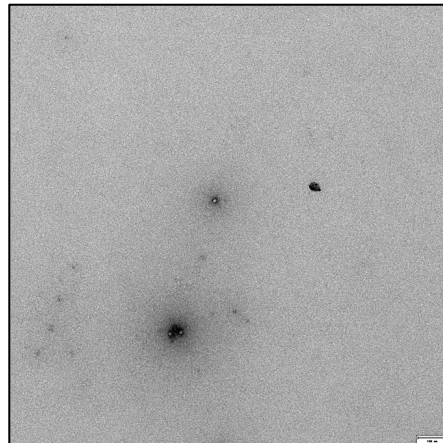


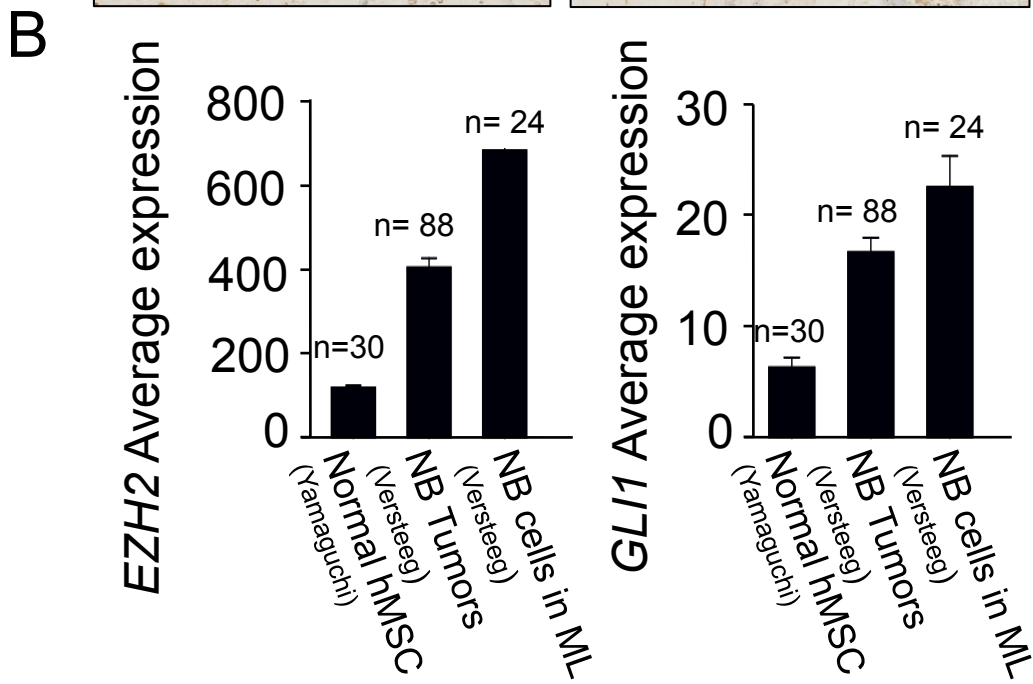
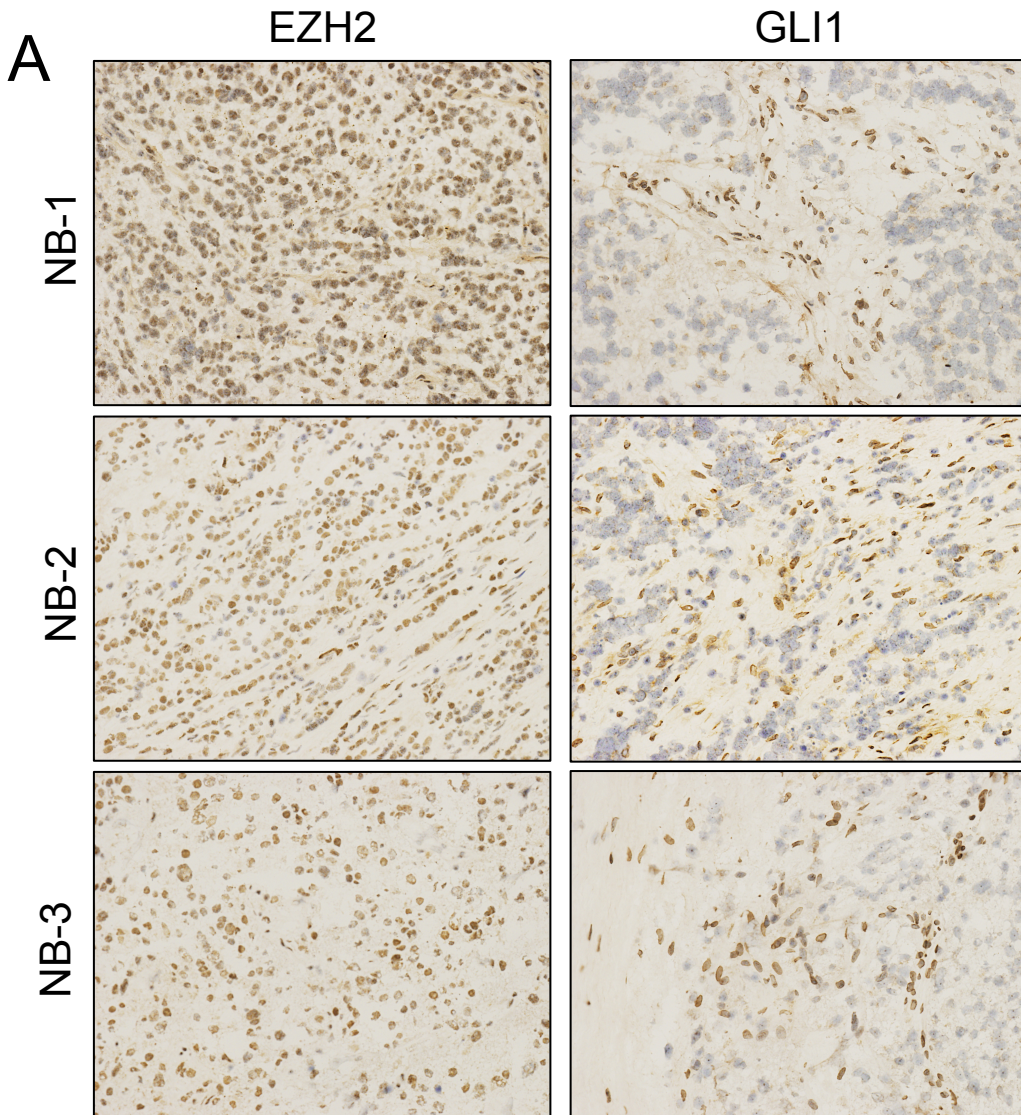
B

| sample | Concentration (particles/ μ L) |
|-------------|------------------------------------|
| PBS | 0.439×10^8 |
| Biomaterial | 0.249×10^8 |

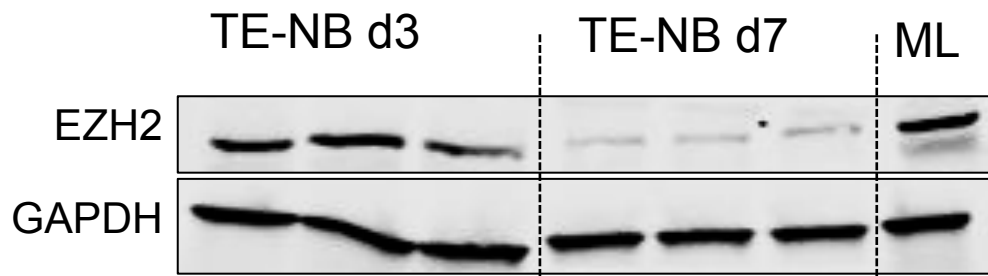
C



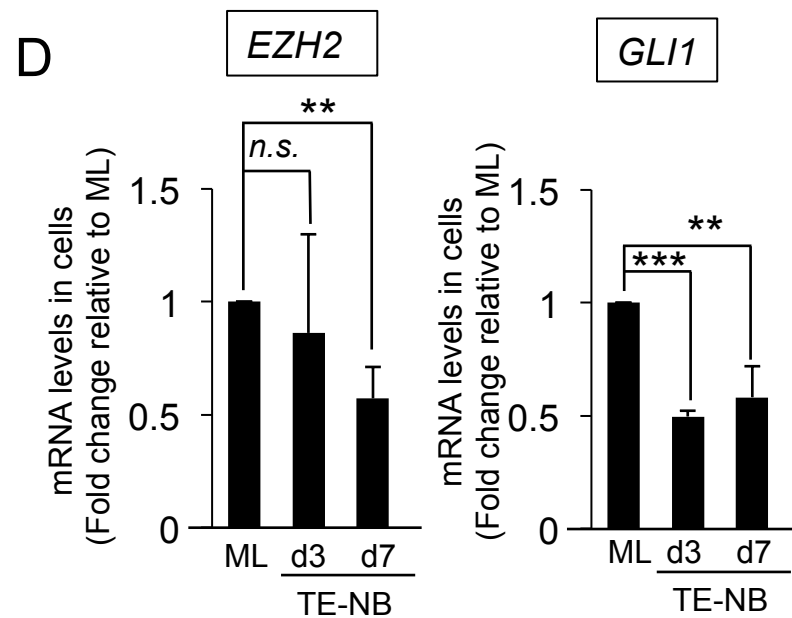
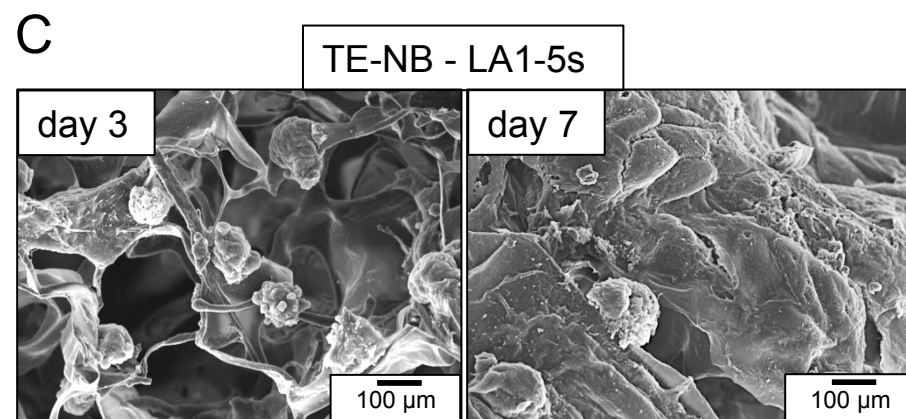
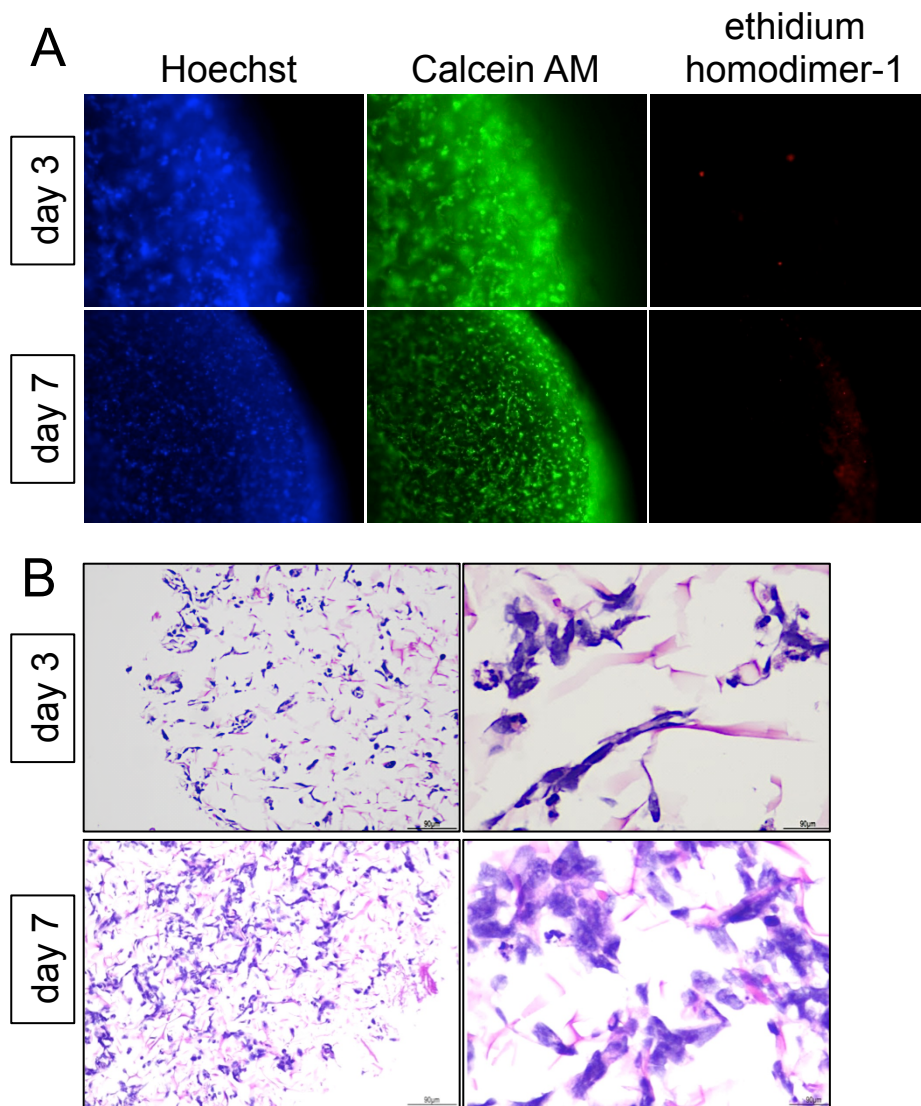
Supp. Figure 1.



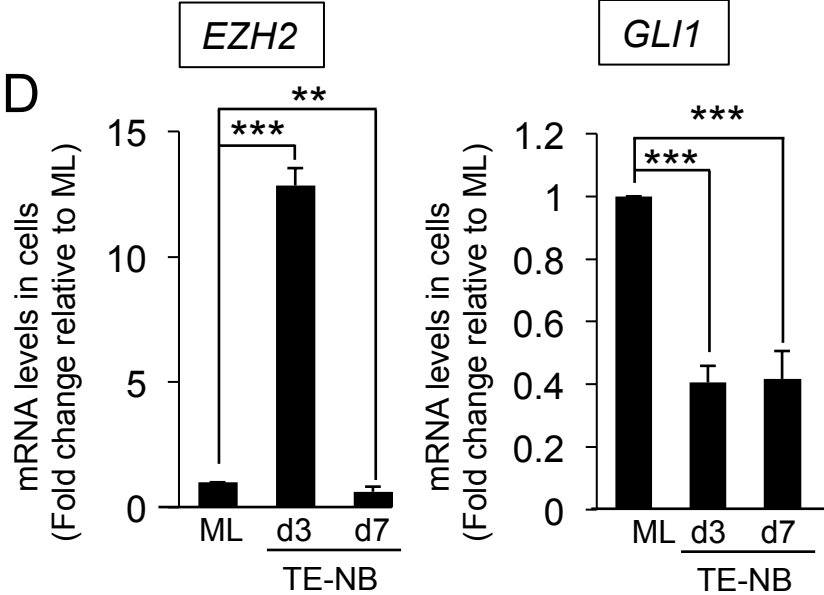
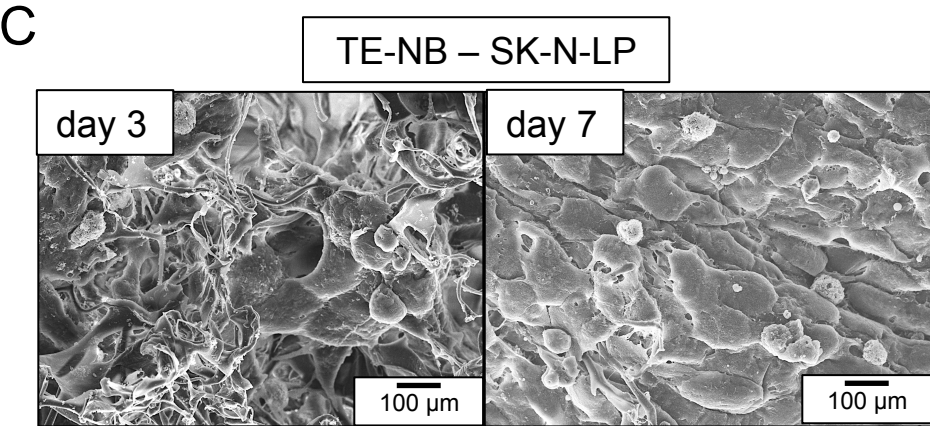
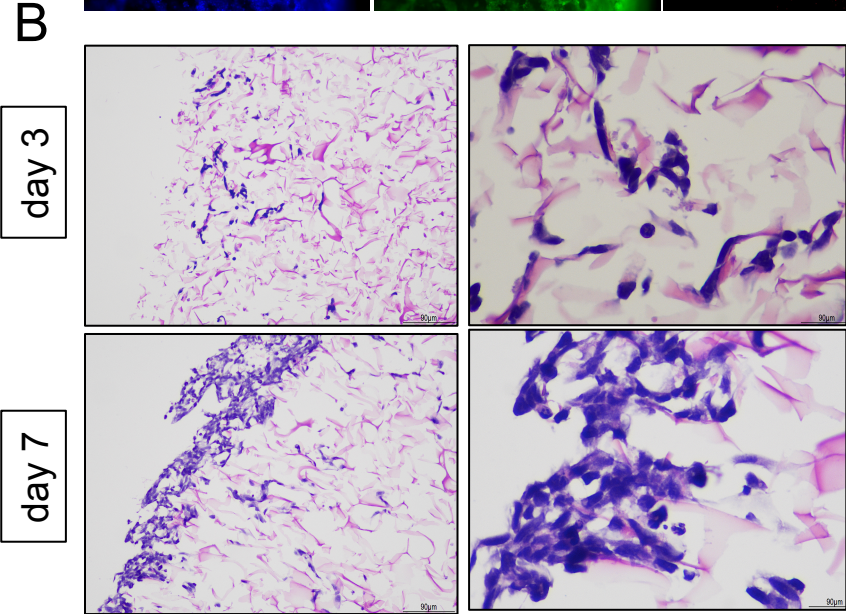
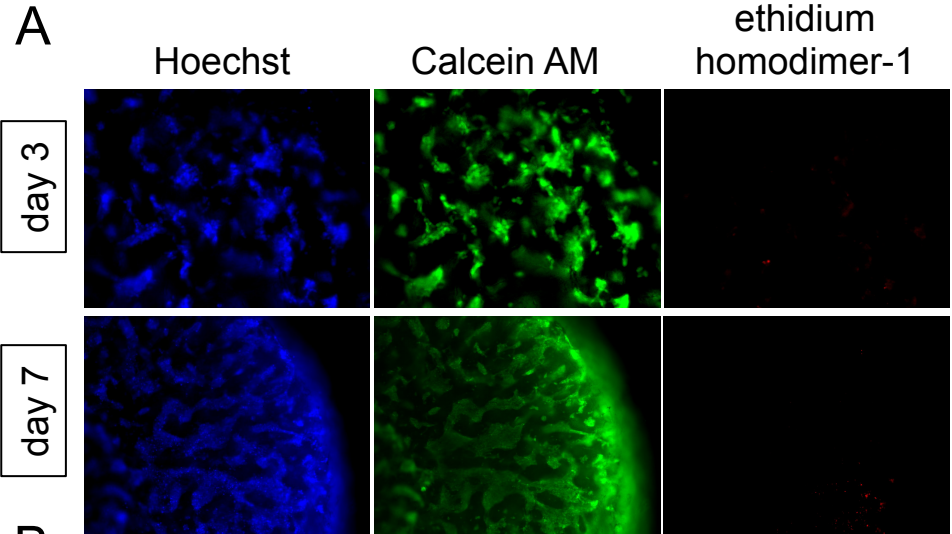
Supp. Figure 2.



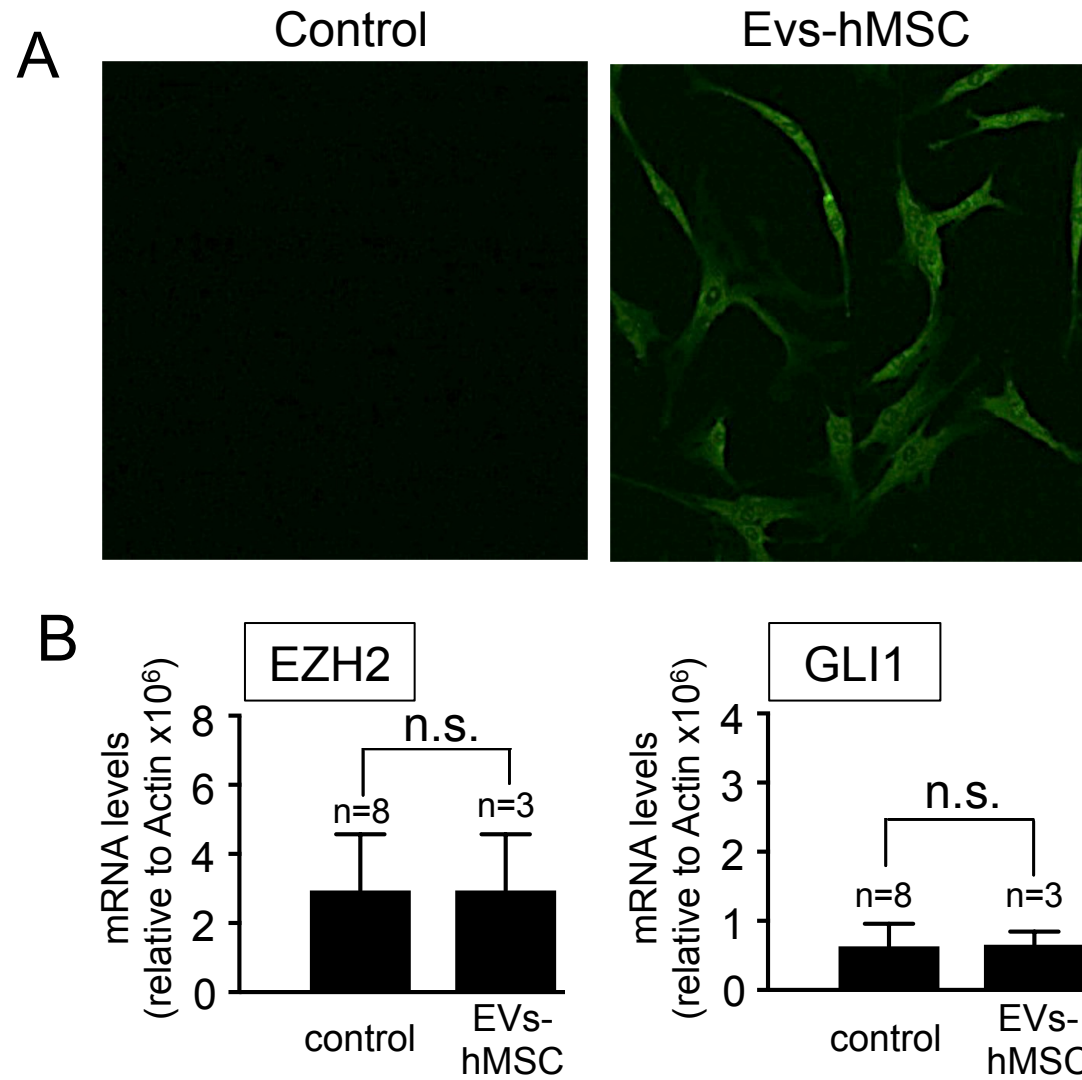
Supp. Figure 3.



Supp. Figure 4.



Supp. Figure 5.



Supp. Figure 6.