

Original article

Distinct prognosis of biliary tract cancer according to tumor location, stage, and treatment: a population-based study

Mee Joo Kang^{1,2}, Jiwon Lim², Sung-Sik Han¹, Hyeong Min Park¹, Sun-Whe Kim¹, Woo Jin Lee¹, Sang Myung Woo¹, Tae Hyun Kim¹, Young-Joo Won^{2,3,*}, and Sang-Jae Park^{1,*}

¹ Center for Liver and Pancreatobiliary Cancer, National Cancer Center, Goyang, Korea

² Division of Cancer Registration and Surveillance, National Cancer Center, Goyang, Korea

³ Department of Cancer Control & Population Health, Graduate School of Cancer Science and Policy, National Cancer Center, Goyang, Korea

***Correspondence to:**

Sang-Jae Park, M.D., Ph.D.

Center for Liver and Pancreatobiliary Cancer, National Cancer Center

323 Ilsan-ro, Ilsandong-gu, Goyang-si Gyeonggi-do, 10408, Republic of Korea

Tel: 82-31-920-1640 E-mail: spark@ncc.re.kr

Young-Joo Won, Ph.D.

Korea Central Cancer Registry, National Cancer Center

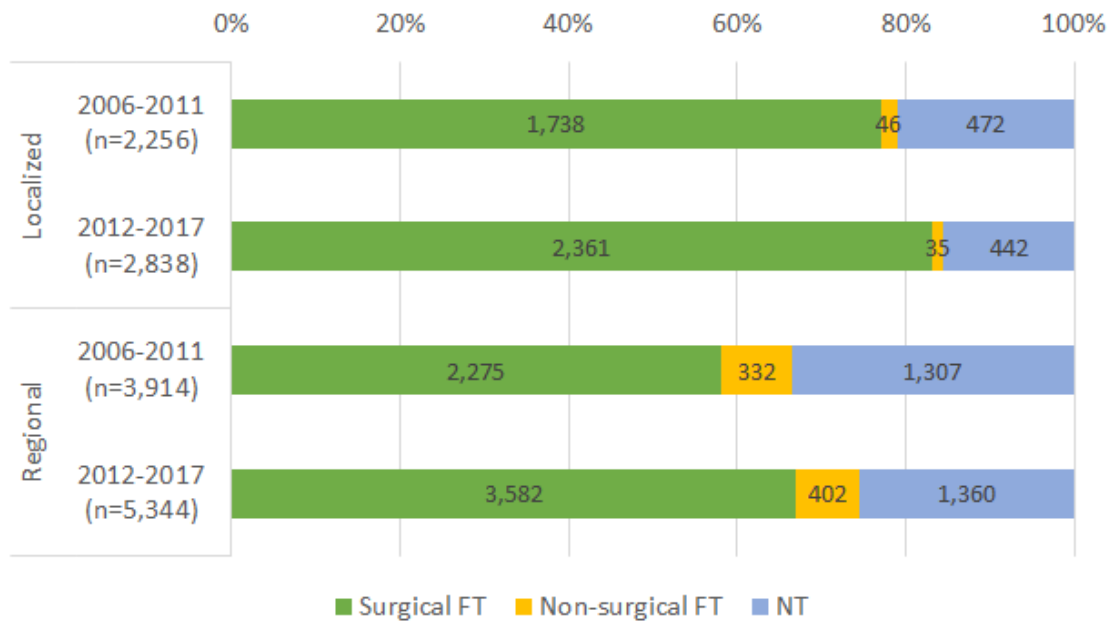
323 Ilsan-ro, Ilsandong-gu, Goyang-si Gyeonggi-do, 10408, Republic of Korea

Tel: 82-31-920-2015 E-mail: astra67@ncc.re.kr

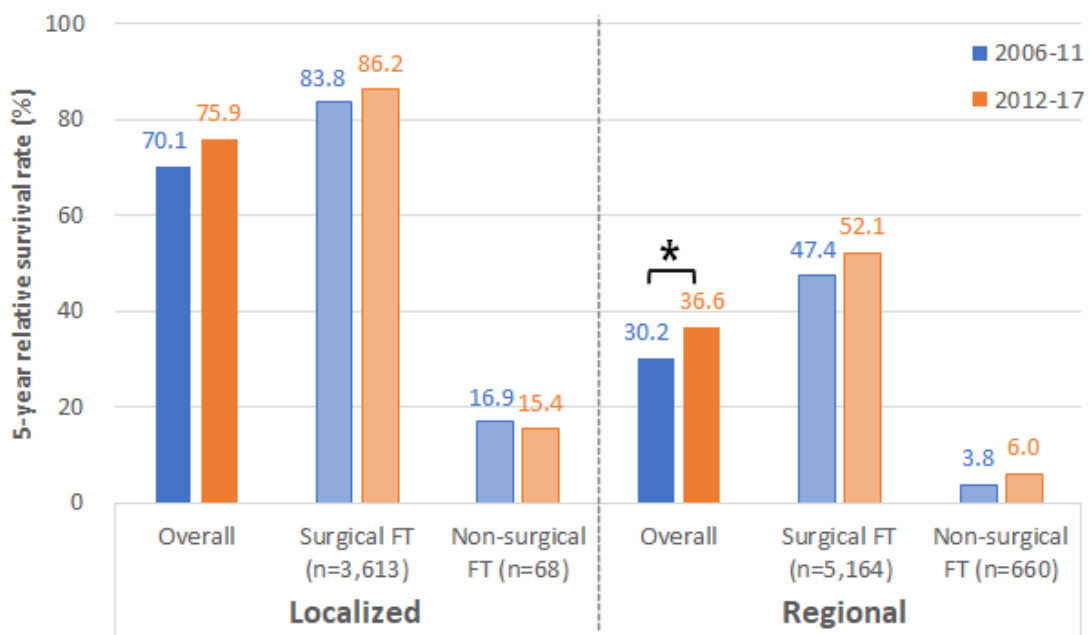
Supplementary figures

Supplementary figure 1. Gallbladder cancer

Supple Figure 1a. Treatment pattern according to SEER stage and time period



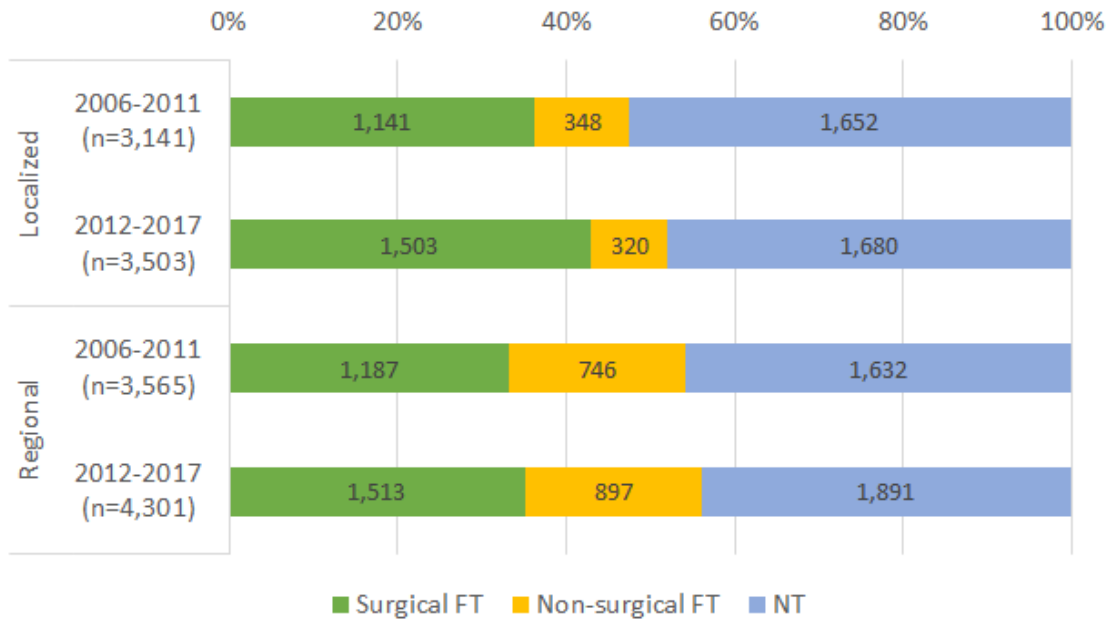
Supple Figure 1b. Five-year relative survival rate according to SEER stage and first course of treatment



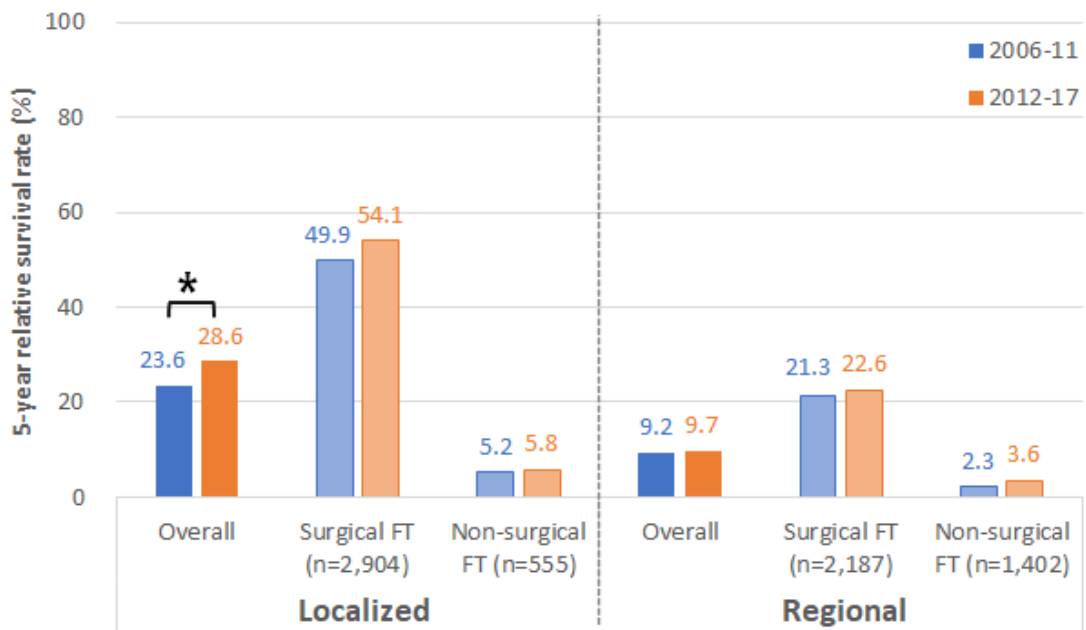
* is statistically significant with p-value of <0.05.

Supplementary figure 2. Intrahepatic bile duct cancer

Supple Figure 2a. Treatment pattern according to SEER stage and time period



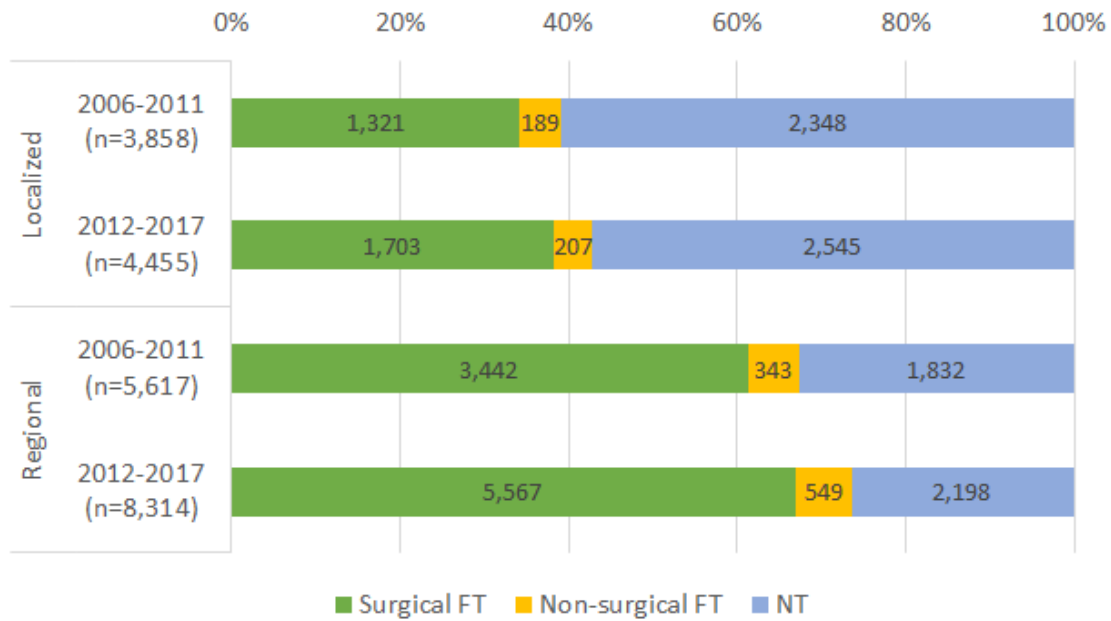
Supple Figure 2b. Five-year relative survival rate according to SEER stage and first course of treatment



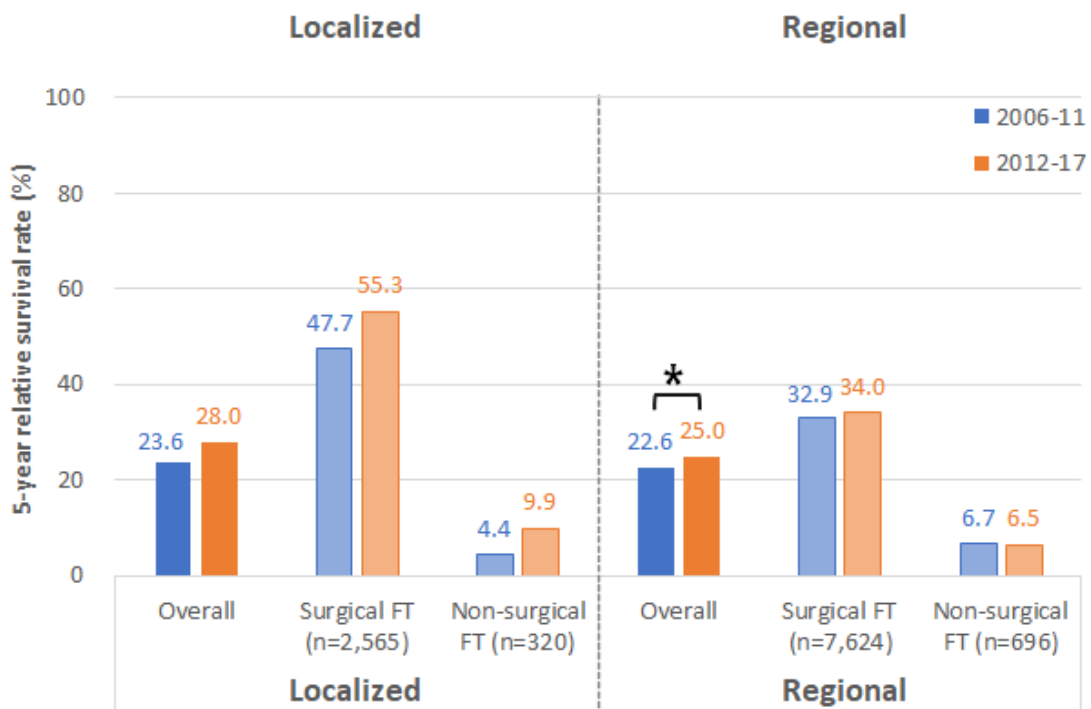
* is statistically significant with p-value of <0.05.

Supplementary figure 3. Extrahepatic bile duct cancer

Supple Figure 3a. Treatment pattern according to SEER stage and time period



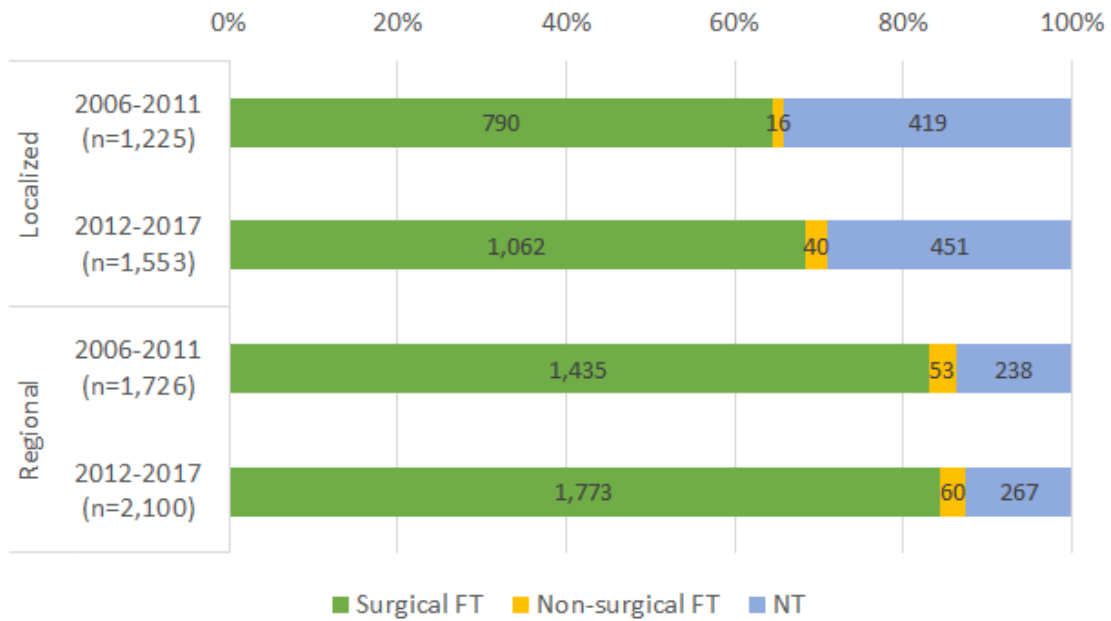
Supple Figure 3b. Five-year relative survival rate according to SEER stage and first course of treatment



* is statistically significant with p-value of <0.05.

Supplementary figure 4. Ampulla of Vater cancer

Supple Figure 4a. Treatment pattern according to SEER stage and time period



Supple Figure 4b. Five-year relative survival rate according to SEER stage and first course of treatment

