

15,732
movies

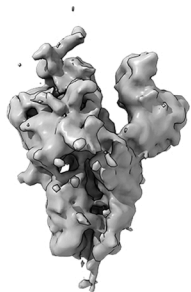
↓ *Motion & CTF correction*

15,324
mic.

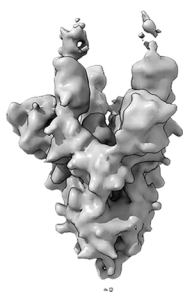
↓ *Picking & 2D classification*
pixel size = 0.86 Å
box size = 440 px³

1366,172 part.

↓ *Ab initio reconstruction*
3D classification



154,574 part.



498,560 part.

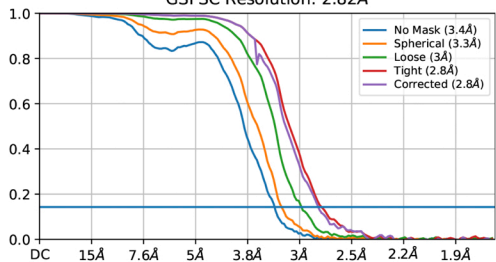


634,922 part.



78,116 part.

GSFSC Resolution: 2.82Å



↓ *Non-Uniform Refinement*
(optimize defocus + CTF)
sym = C1

