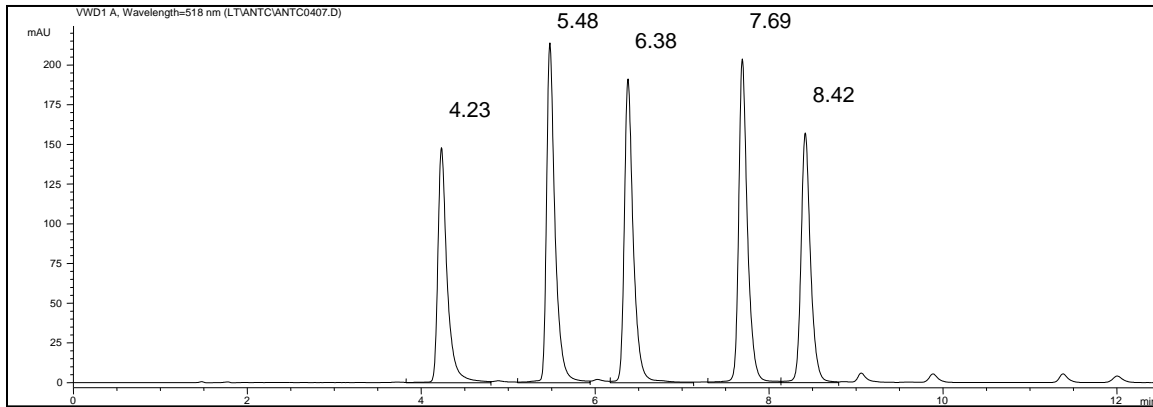
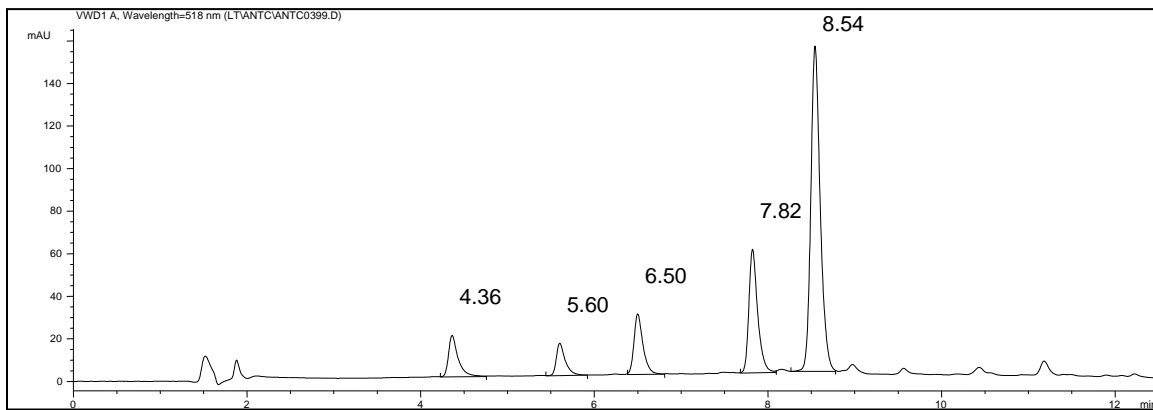


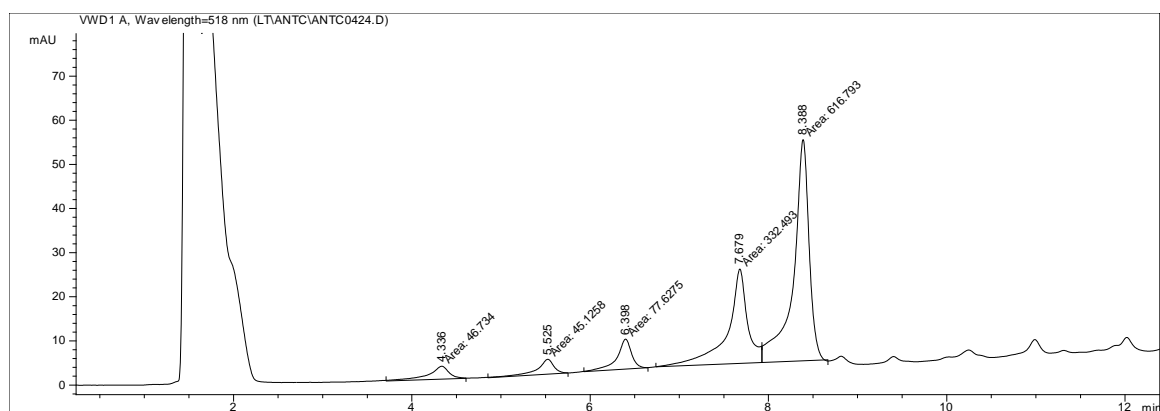
## Supplementary data



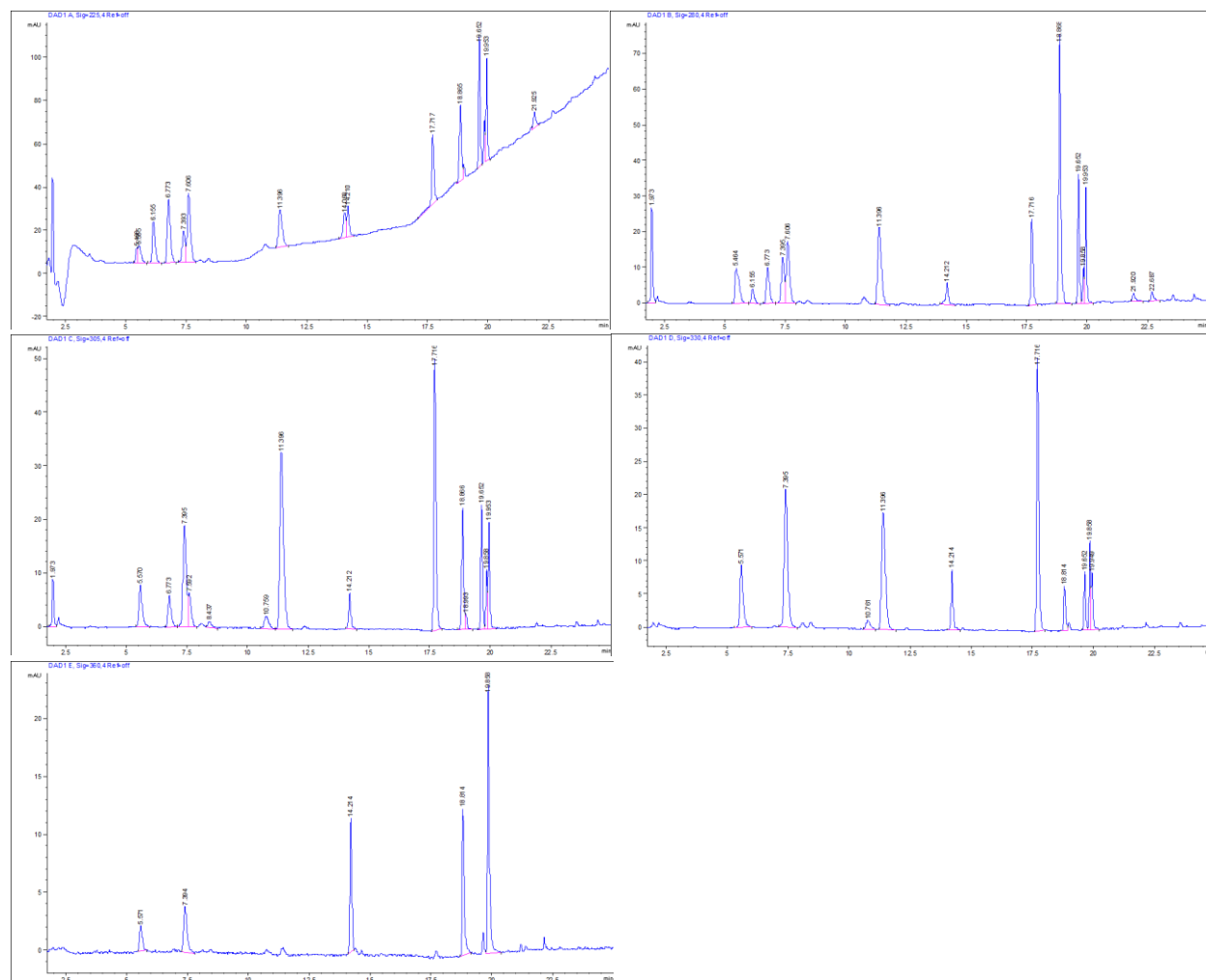
**Supplementary figure 1.** Chromatogram of anthocyanin standards, concentration 10 mg/L.



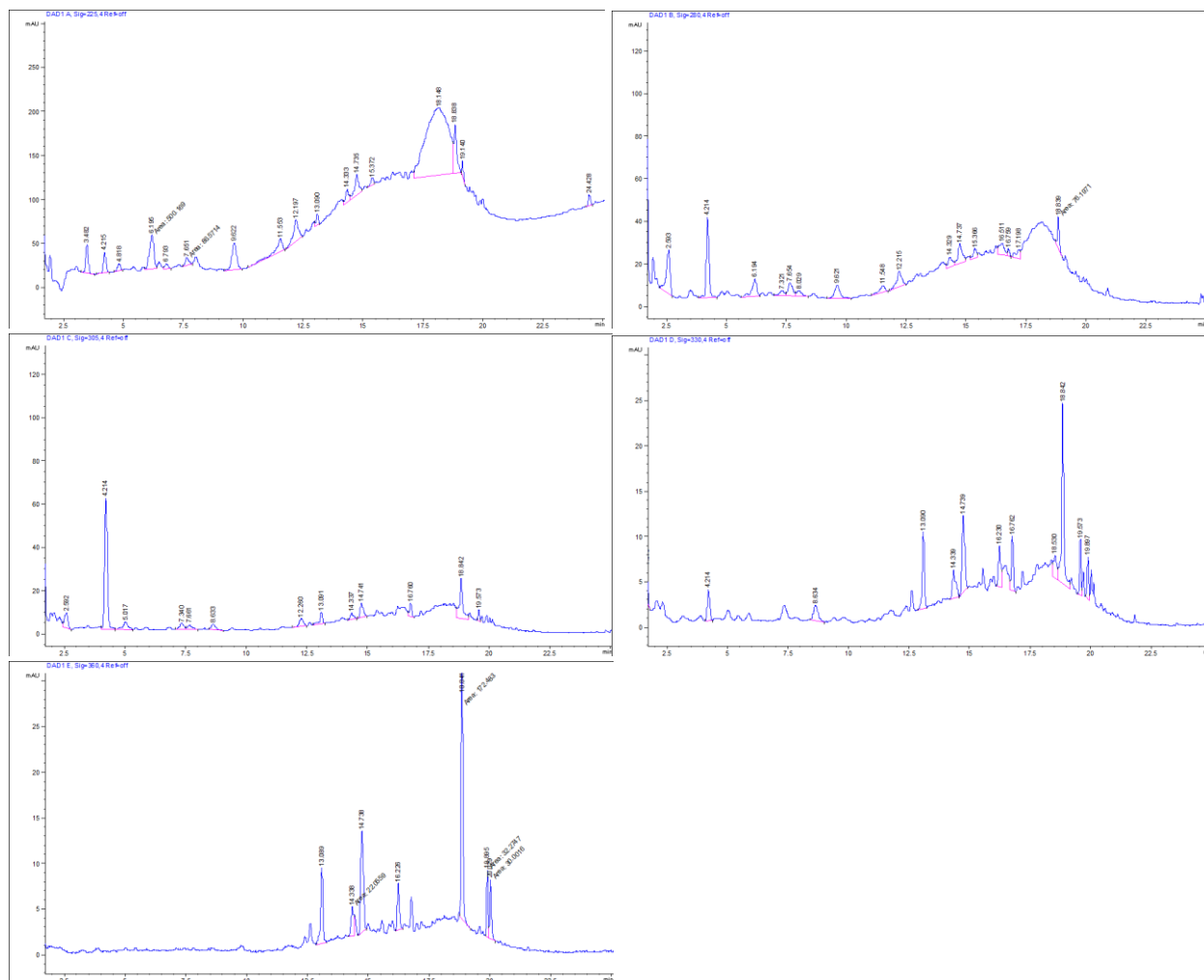
**Supplementary figure 2.** Chromatogram of anthocyanin compounds in the initial method optimization for the experimental conditions (Exp. No. 4): c(ethanol)=0% (pure water) and sample/solvent ratio=60 w/V.



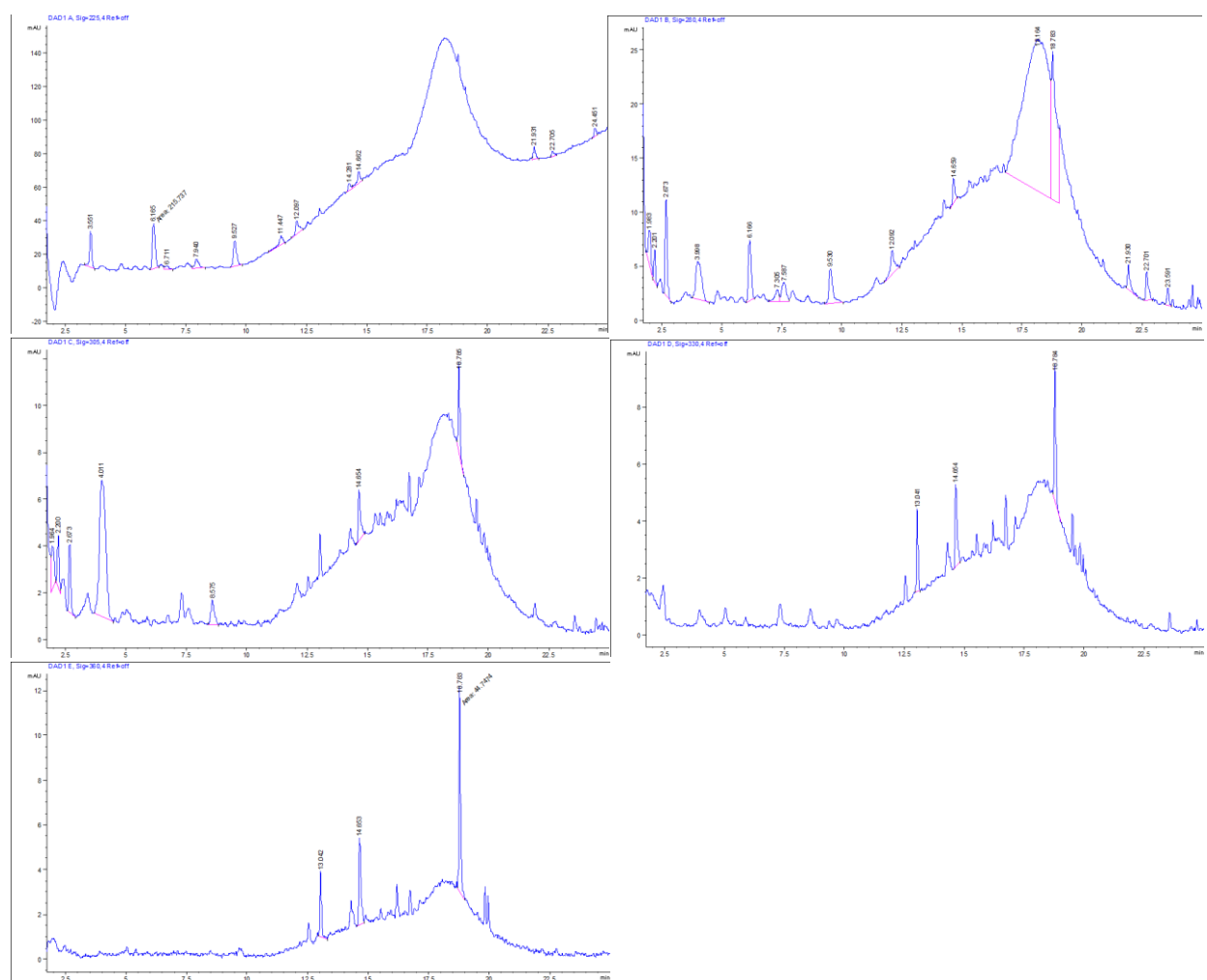
**Supplementary figure 3.** Chromatogram of anthocyanin compounds in the final method optimization for the experimental conditions (Exp. No. 3): pH value=3, temperature=60 °C and time=10 min.



**Supplementary figure 4.** Chromatogram of phenolic standards, concentration 10 mg/L.



**Supplementary figure 5.** Chromatogram of phenolic compounds in the initial method optimization for the experimental conditions (Exp. No. 5): c(ethanol)=80% (pure water) and sample/solvent ratio=10 w/V.



**Supplementary figure 6.** Chromatogram of phenolic compounds in the final method optimization for the experimental conditions (Exp. No. 8): pH value=6, temperature=60 °C and time=60 min.