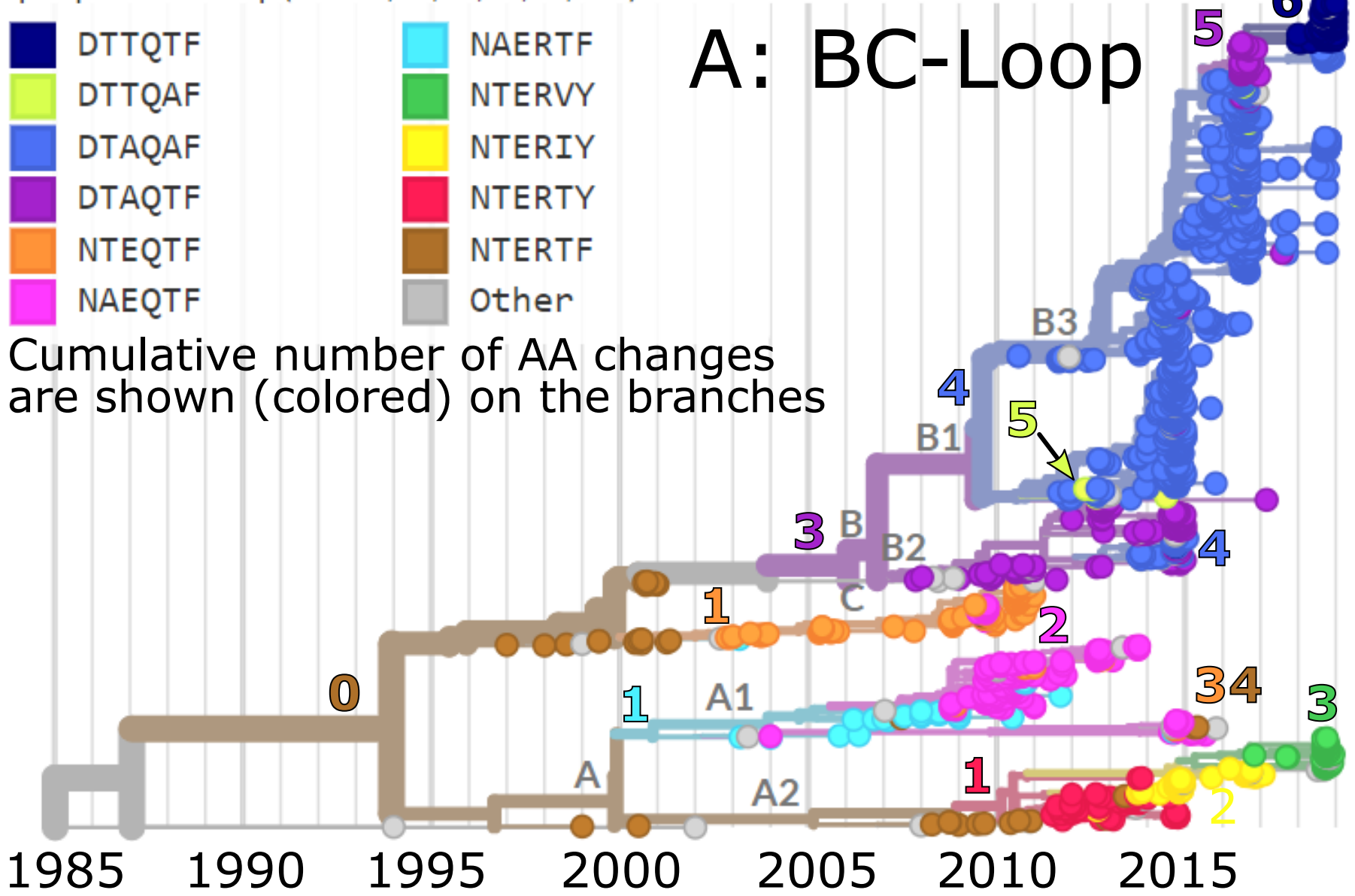


Epitope At BC Loop (Pos 90,92,95,97,98,103) ^

- | | |
|----------|----------|
| ■ DTTQTF | ■ NAERTF |
| ■ DTTQAF | ■ NTERVY |
| ■ DTAQAF | ■ NTERIY |
| ■ DTAQTF | ■ NTERTY |
| ■ NTEQTF | ■ NTERTF |
| ■ NAEQTF | ■ Other |

A: BC-Loop

Cumulative number of AA changes are shown (colored) on the branches



Epitope At DE Loop (Pos 140,141,142,143,144,145,146,149)

- | | |
|-------------|-------------|
| ■ NGSSNSTYM | ■ NGSNNNTYV |
| ■ NGSSNNTYM | ■ NGSNNNAYV |
| ■ NGSSSNTYM | ■ -GSSNSTYM |
| ■ NDSSNNTYM | ■ -GSNNSTYM |
| ■ NGSSNNTYV | ■ -SSSNSTYT |
| ■ NGSGNNTYV | ■ -SSSNSTYA |
| ■ NGSSNNSYV | ■ Other |

B: DE-Loop

