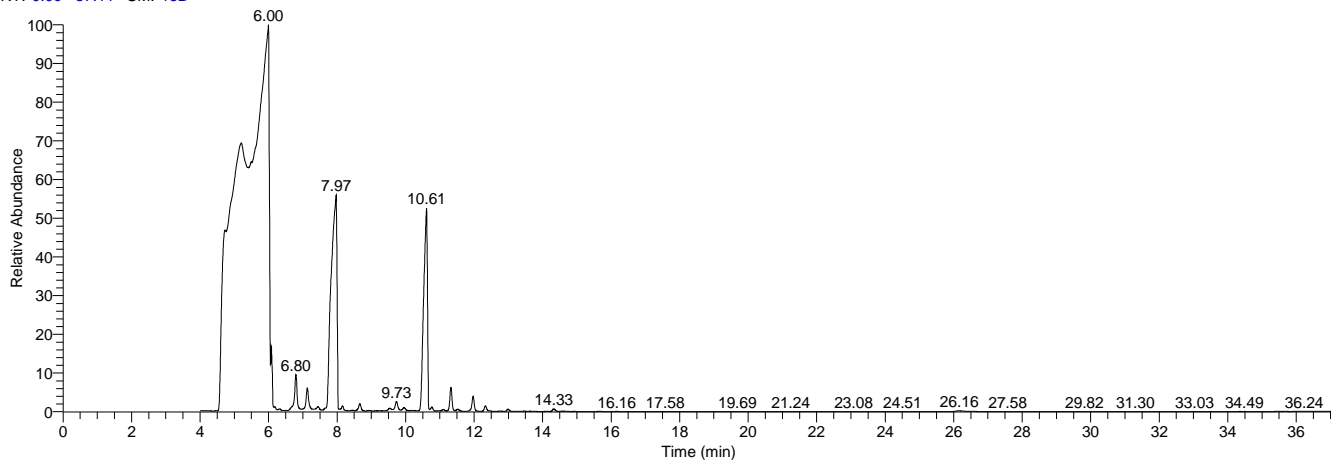


My GC-MS Report

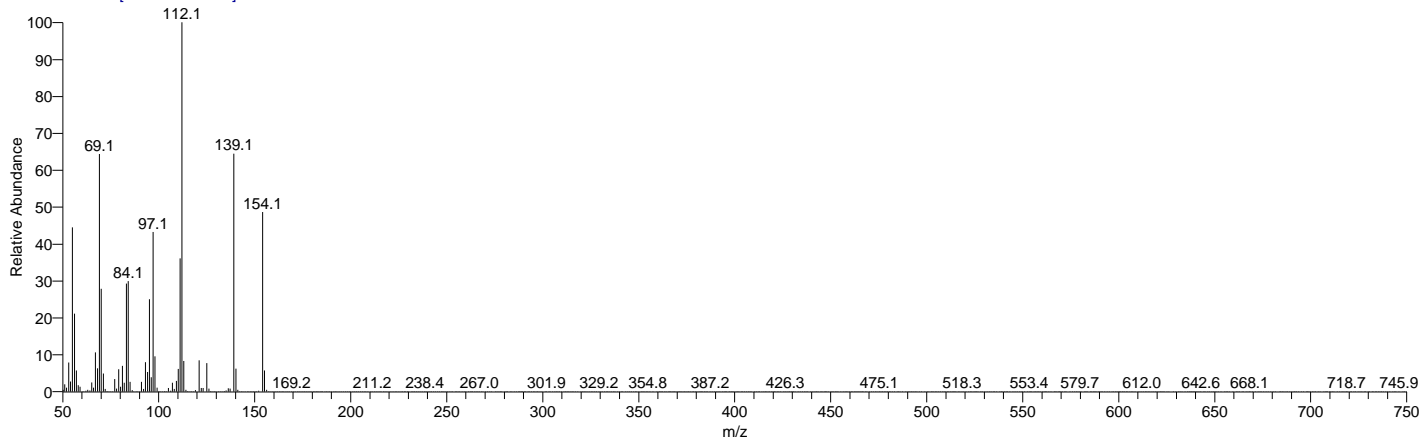
RT: 0.00 - 37.11 SM: 15B



NL:
2.70E9
TIC MS
peppermint
_oil

RT	Area %	Peak Area	Peak Height
4.68	8.42	4063067884.30	501024703.52
4.88	0.24	114931501.35	29943849.73
5.19	4.91	2368487049.80	192050196.78
6.01	26.41	12739183474.35	1988600551.22
6.09	1.63	785413160.64	372819888.67
6.80	1.94	937648855.46	262990672.27
7.13	1.32	634605734.41	158927031.10
7.98	32.76	15802629814.66	1448062177.76
8.16	0.21	102338294.49	34126440.78
8.67	0.46	223501444.15	52989470.49
9.73	0.58	279985605.09	63142981.17
10.62	18.48	8915803583.91	1374122019.40
11.32	1.41	680176010.03	181532778.35
11.97	0.88	423518845.05	110511938.85
12.33	0.34	163893944.46	39601044.18

peppermint_oil #203 RT: 4.68 AV: 1 NL: 1.68E8
T: + c EI Full ms [50.000-750.000]



RT	Compound Name	Area %	MF	Molecular Formula	Molecular Weight	Cas #	Library
4.68	Cyclohexanone, 5-methyl-2-(1-methylethyl)-, cis-	8.42	945	C10H18O	154	491-07-6	replib
4.68	1-Menthone	8.42	955	C10H18O	154	14073-9-7-3	mainlib

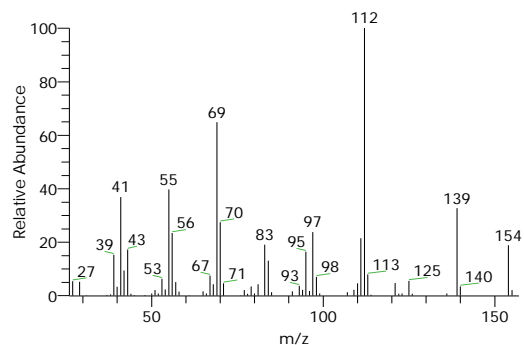
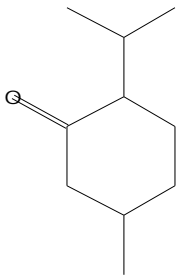
My GC-MS Report

RT	Compound Name	Area %	MF	Molecular Formula	Molecular Weight	Cas #	Library
4.68	CYCLOHEXANONE, 5-METHYL-2-(1-METHYLETHYL)-, TRANS-	8.42	935	C10H18O	154	89-80-5	WileyRegistry8e
4.68	CYCLOHEXANONE, 5-METHYL-2-(1-METHYLETHYL)-, CIS-	8.42	936	C10H18O	154	491-07-6	WileyRegistry8e
4.68	Cyclohexanone, 5-methyl-2-(1-methylethyl)-, cis-	8.42	941	C10H18O	154	491-07-6	replib

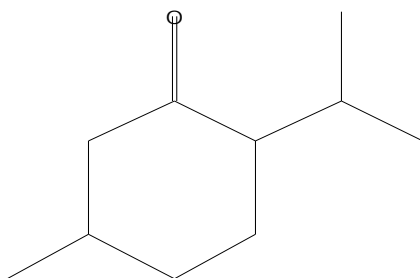
Compound Structure

Hit Spectrum

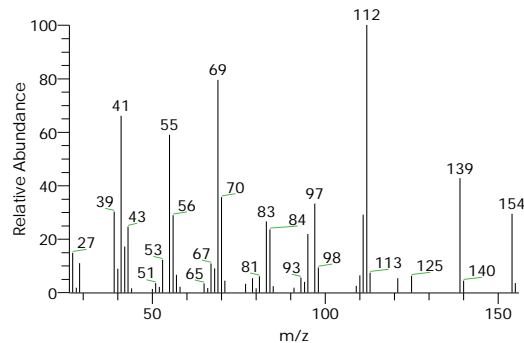
Cyclohexanone, 5-methyl-2-(1-methylethyl)-, cis-
Formula C10H18O, MW 154, CAS# 491-07-6, Entry# 17708
p-Menthane-3-one, cis-



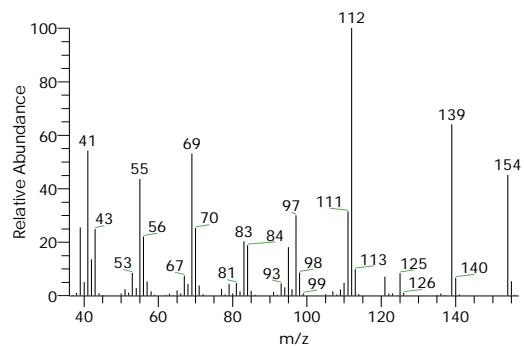
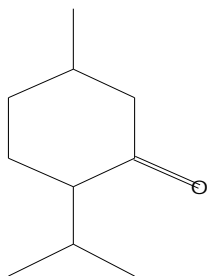
I-Menthone
Formula C10H18O, MW 154, CAS# 14073-97-3, Entry# 89414
Cyclohexanone, 5-methyl-2-(1-methylethyl)-, (2S-trans)-



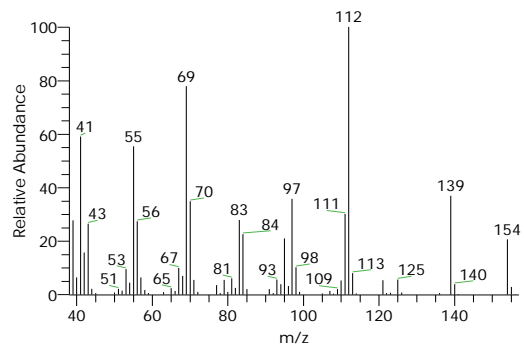
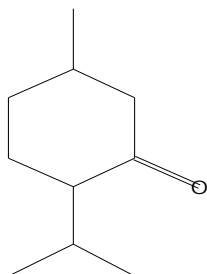
SI 935, RSI 955, mainlib, Entry# 89414, CAS# 14073-97-3, I-Menthone



CYCLOHEXANONE, 5-METHYL-2-(1-METHYLETHYL)-, TRANS-
Formula C10H18O, MW 154, CAS# 89-80-5, Entry# 38733
2-ISOPROPYL-5-METHYLCYCLOHEXANONE #



CYCLOHEXANONE, 5-METHYL-2-(1-METHYLETHYL)-, CIS-
Formula C10H18O, MW 154, CAS# 491-07-6, Entry# 38412
(1)-ISOMENTHONE

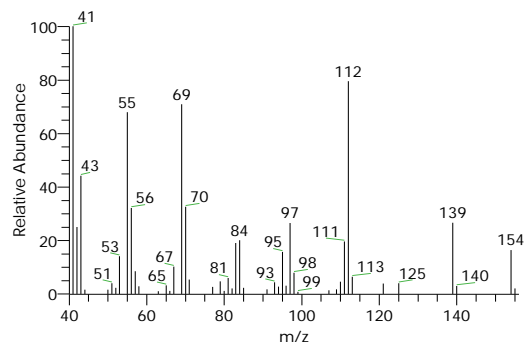
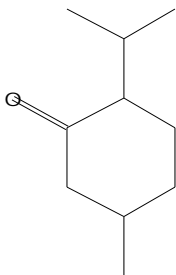


My GC-MS Report

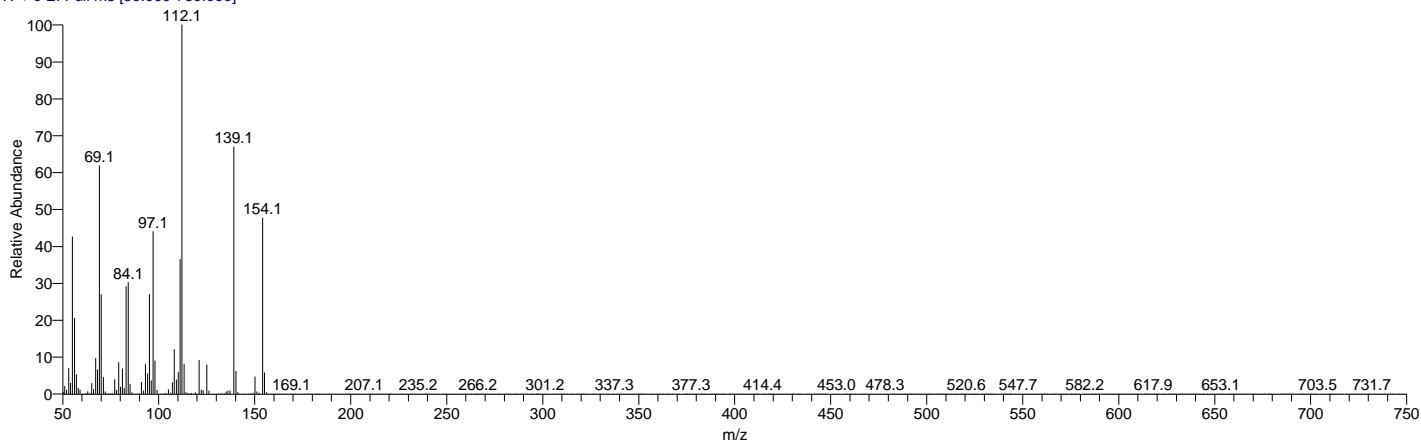
Compound Structure

Hit Spectrum

Cyclohexanone, 5-methyl-2-(1-methylethyl)-, cis-
Formula C10H18O, MW 154, CAS# 491-07-6, Entry# 1370
p-Menthan-3-one, cis-



peppermint_oil #264 RT: 4.88 AV: 1 NL: 2.02E8
T: + c EI Full ms [50.000-750.000]

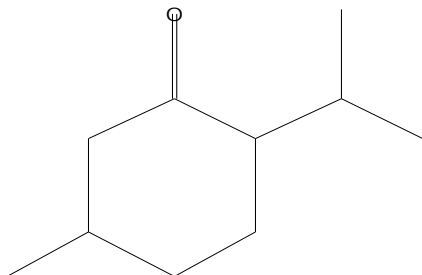


RT	Compound Name	Area %	MF	Molecular Formula	Molecular Weight	Cas #	Library
4.88	l-Menthone	0.24	956	C10H18O	154	14073-97-3	mainlib
4.88	Cyclohexanone, 5-methyl-2-(1-methylethyl)-, cis-	0.24	937	C10H18O	154	491-07-6	replib
4.88	CYCLOHEXANONE, 5-METHYL-2-(1-METHYLETHYL)-, CIS-	0.24	915	C10H18O	154	491-07-6	WileyRegistry8e
4.88	CYCLOHEXANONE, 5-METHYL-2-(1-METHYLETHYL)-, TRANS-	0.24	908	C10H18O	154	89-80-5	WileyRegistry8e
4.88	CYCLOHEXANONE, 5-METHYL-2-(1-METHYLETHYL)-, TRANS-	0.24	904	C10H18O	154	89-80-5	WileyRegistry8e

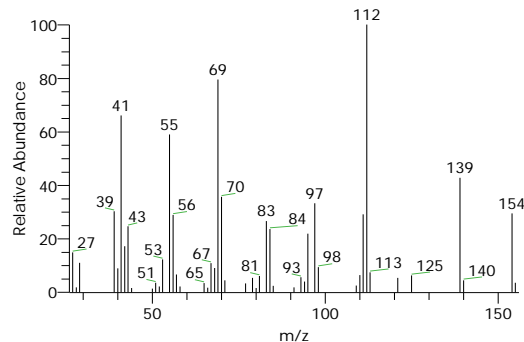
Compound Structure

Hit Spectrum

l-Menthone
Formula C10H18O, MW 154, CAS# 14073-97-3, Entry# 89414
Cyclohexanone, 5-methyl-2-(1-methylethyl)-, (2S-trans)-



SI 917, RSI 956, mainlib, Entry# 89414, CAS# 14073-97-3, l-Menthone

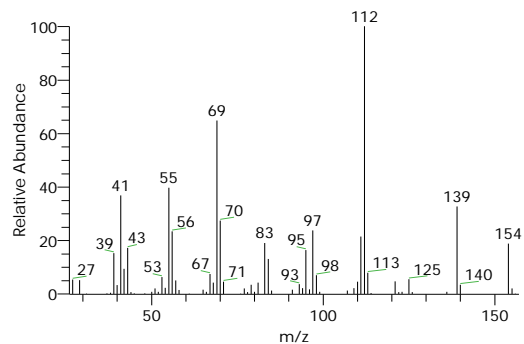
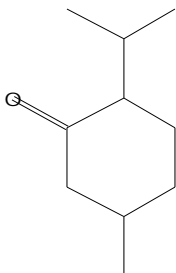


My GC-MS Report

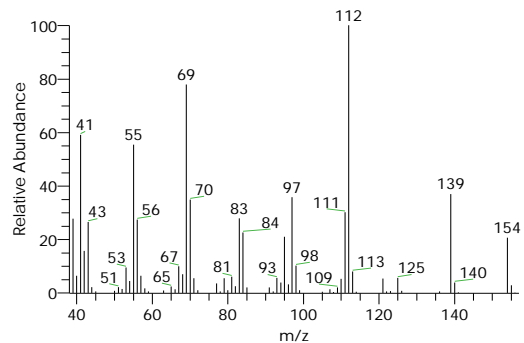
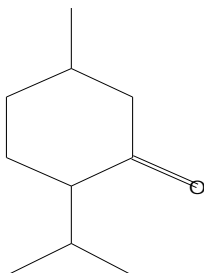
Compound Structure

Hit Spectrum

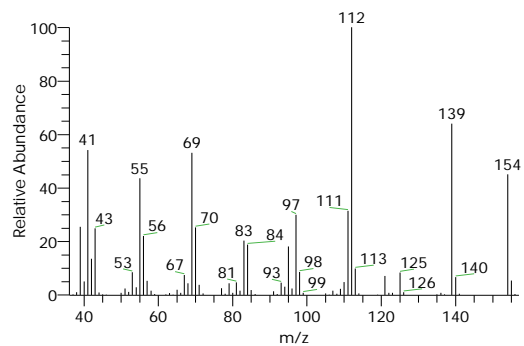
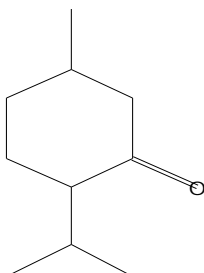
Cyclohexanone, 5-methyl-2-(1-methylethyl)-, cis-
Formula C₁₀H₁₈O, MW 154, CAS# 491-07-6, Entry# 17708
p-Menthan-3-one, cis-



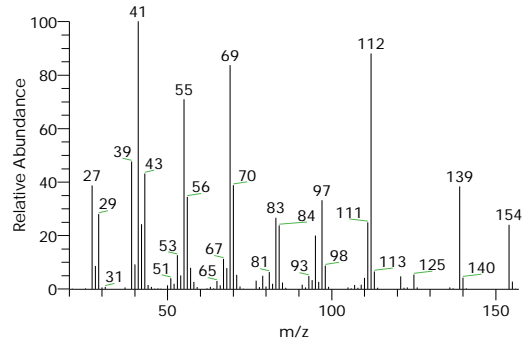
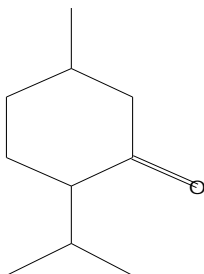
CYCLOHEXANONE, 5-METHYL-2-(1-METHYLETHYL)-, CIS-
Formula C₁₀H₁₈O, MW 154, CAS# 491-07-6, Entry# 38412
(1)-ISOMENTHONE



CYCLOHEXANONE, 5-METHYL-2-(1-METHYLETHYL)-, TRANS-
Formula C₁₀H₁₈O, MW 154, CAS# 89-80-5, Entry# 38733
2-ISOPROPYL-5-METHYLCYCLOHEXANONE #

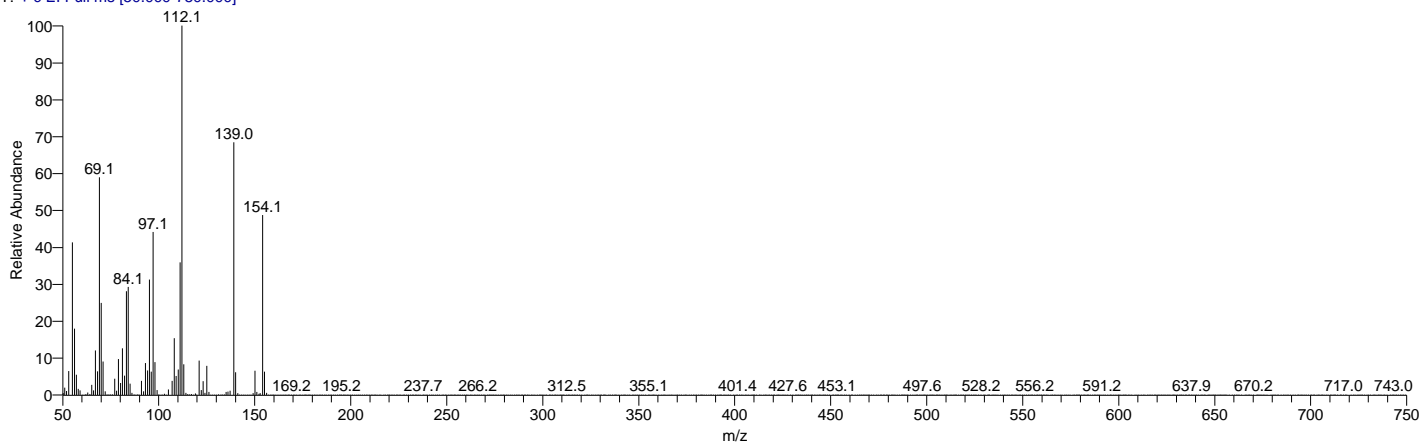


CYCLOHEXANONE, 5-METHYL-2-(1-METHYLETHYL)-, TRANS-
Formula C₁₀H₁₈O, MW 154, CAS# 89-80-5, Entry# 38426
2-ISOPROPYL-5-METHYLCYCLOHEXANONE #



My GC-MS Report

peppermint_oil #355 RT: 5.19 AV: 1 NL: 2.52E8
T: + c EI Full ms [50.000-750.000]

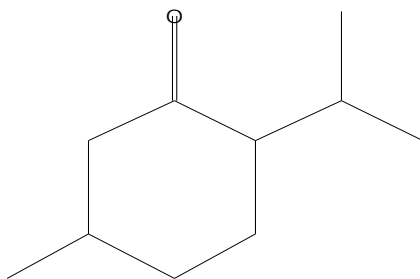


RT	Compound Name	Area %	MF	Molecular Formula	Molecular Weight	Cas #	Library
5.19	l-Menthone	4.91	944	C10H18O	154	14073-9 7-3	mainlib
5.19	Cyclohexanone, 5-methyl-2-(1-methylethyl)-	4.91	912	C10H18O	154	10458-1 4-7	mainlib
5.19	CYCLOHEXANONE, 5-METHYL-2-(1-METHYLETHYL)-	4.91	912	C10H18O	154	10458-1 4-7	WileyRegi stry8e
5.19	Cyclohexanone, 5-methyl-2-(1-methylethyl)-, cis-	4.91	914	C10H18O	154	491-07 -6	replib
5.19	Cyclohexanone, 5-methyl-2-(1-methylethyl)-, cis-	4.91	921	C10H18O	154	491-07 -6	replib

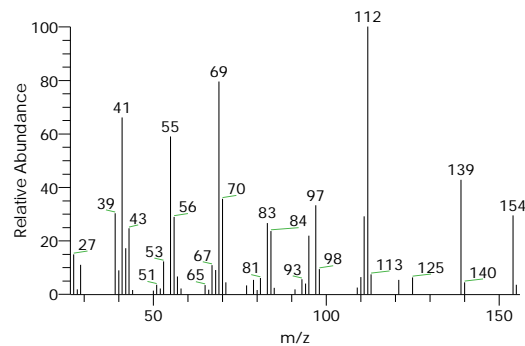
Compound Structure

Hit Spectrum

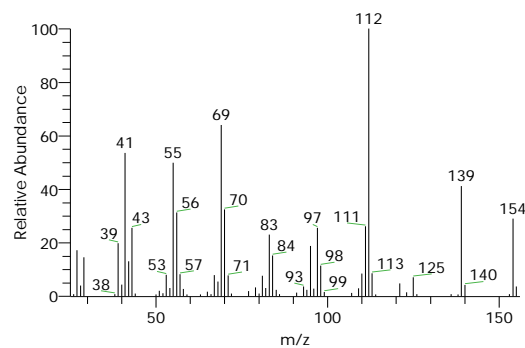
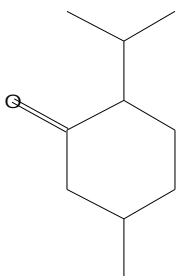
l-Menthone
Formula C10H18O, MW 154, CAS# 14073-97-3, Entry# 89414
Cyclohexanone, 5-methyl-2-(1-methylethyl)-, (2S-trans)-



SI 894, RSI 944, mainlib, Entry# 89414, CAS# 14073-97-3, l-Menthone



Cyclohexanone, 5-methyl-2-(1-methylethyl)-
Formula C10H18O, MW 154, CAS# 10458-14-7, Entry# 89410
p-Menthan-3-one

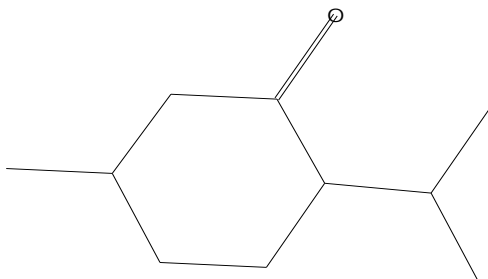


My GC-MS Report

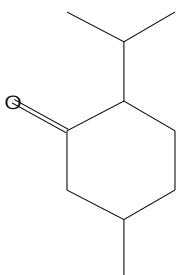
Compound Structure

Hit Spectrum

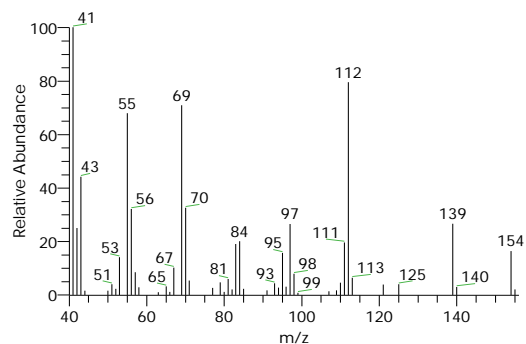
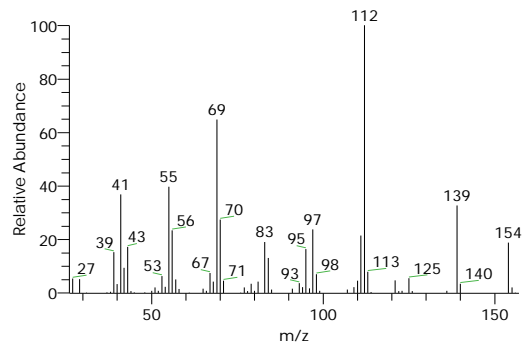
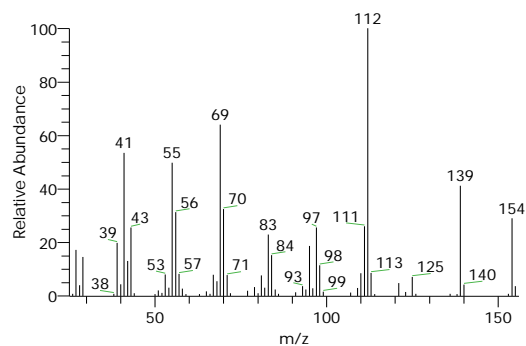
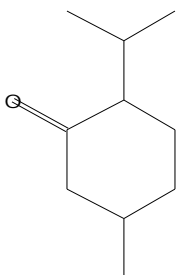
CYCLOHEXANONE, 5-METHYL-2-(1-METHYLETHYL)-
 Formula C₁₀H₁₈O, MW 154, CAS# 10458-14-7, Entry# 373487
 2-ISOPROPYL-5-METHYLCYCLOHEXANONE



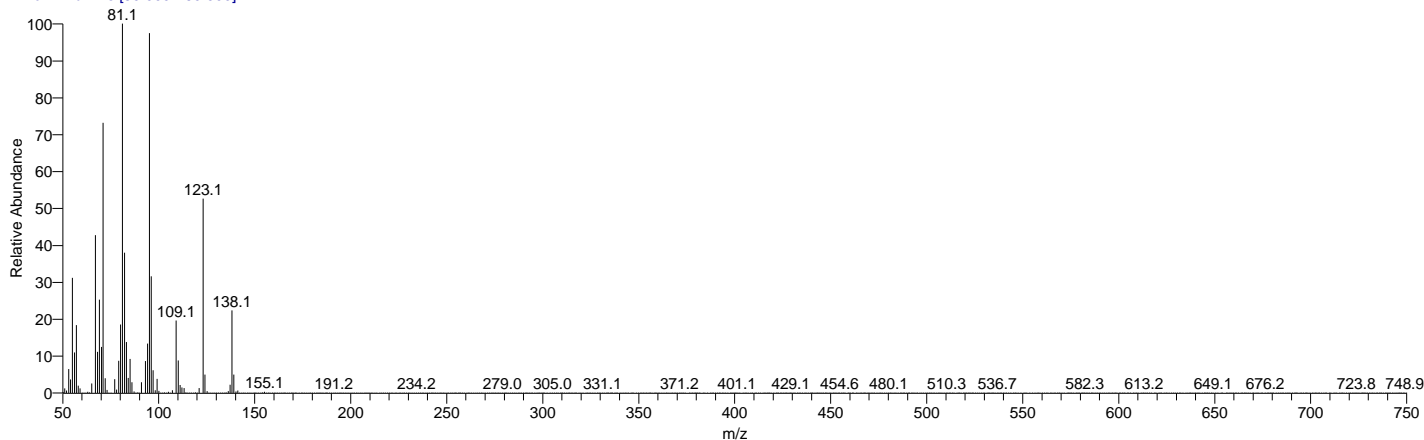
Cyclohexanone, 5-methyl-2-(1-methylethyl)-, cis-
 Formula C₁₀H₁₈O, MW 154, CAS# 491-07-6, Entry# 17708
 p-Menthan-3-one, cis-



Cyclohexanone, 5-methyl-2-(1-methylethyl)-, cis-
 Formula C₁₀H₁₈O, MW 154, CAS# 491-07-6, Entry# 1370
 p-Menthan-3-one, cis-



peppermint_oil #599 RT: 6.01 AV: 1 NL: 3.67E8
 T: + c EI Full ms [50.000-750.000]



RT	Compound Name	Area %	MF	Molecular Formula	Molecular Weight	Cas #	Library
6.01	Levomenthol	26.41	937	C ₁₀ H ₂₀ O	156	2216-5	replib
6.01	CYCLOHEXANOL, 5-METHYL-2-(1-METHYLETHYL) -, (1à,2á,5à)-	26.41	926	C ₁₀ H ₂₀ O	156	89-78-1	WileyRegi stry8e

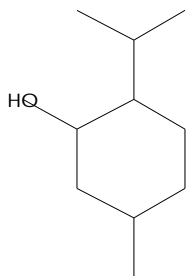
My GC-MS Report

RT	Compound Name	Area %	MF	Molecular Formula	Molecular Weight	Cas #	Library
6.01	Levomenthol	26.41	928	C10H20O	156	2216-5	replib
6.01	Cyclohexanol, 5-methyl-2-(1-methylethyl)-, (1à,2à,5à)-(ñ)-	26.41	925	C10H20O	156	15356-7	mainlib
6.01	2-ISOPROPYL-5-METHYLCYCLO HEXANOL #	26.41	924	C10H20O	156	15356-7	WileyRegi stry8e

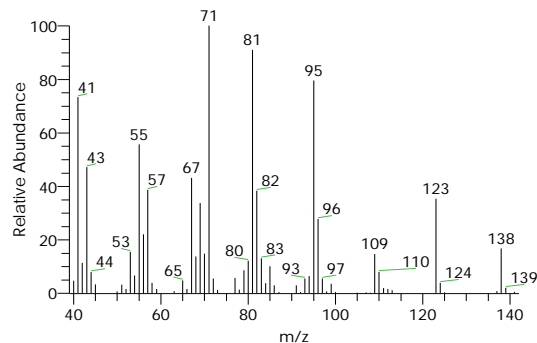
Compound Structure

Hit Spectrum

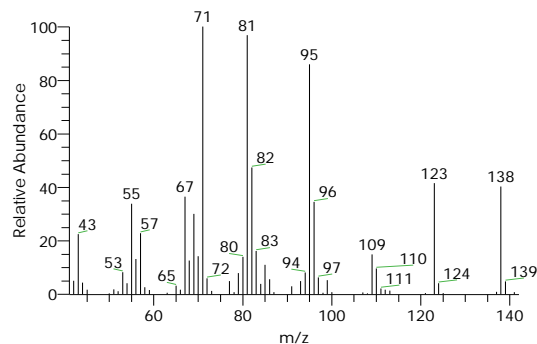
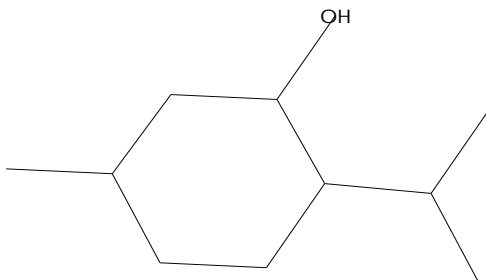
Levomenthol
Formula C10H20O, MW 156, CAS# 2216-51-5, Entry# 9225
Cyclohexanol, 5-methyl-2-(1-methylethyl)-, [1R-(1à,2à,5à)]-



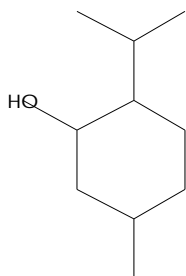
SI 935, RSI 937, replib, Entry# 9225, CAS# 2216-51-5, Levomenthol



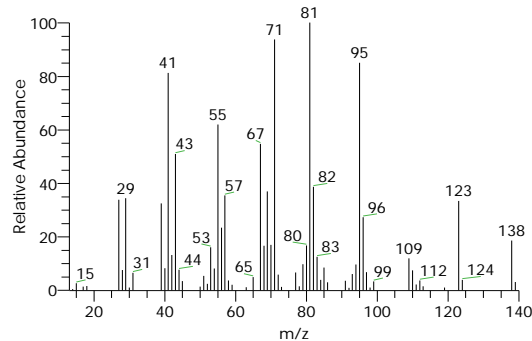
CYCLOHEXANOL, 5-METHYL-2-(1-METHYLETHYL)-, (1à,2à,5à)-
Formula C10H20O, MW 156, CAS# 89-78-1, Entry# 394892
(+)-(1R*,3R*,4S*)-MENTHOL



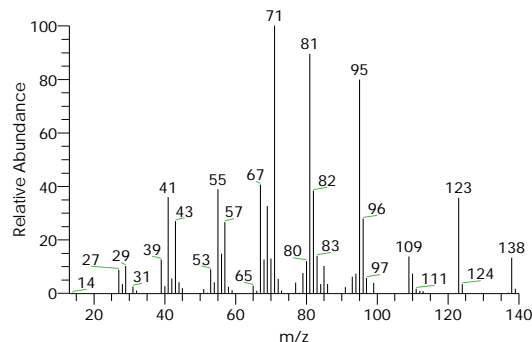
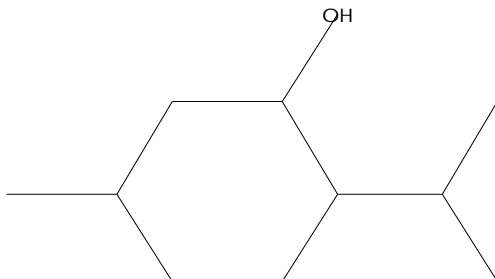
Levomenthol
Formula C10H20O, MW 156, CAS# 2216-51-5, Entry# 11525
Cyclohexanol, 5-methyl-2-(1-methylethyl)-, [1R-(1à,2à,5à)]-



SI 921, RSI 928, replib, Entry# 11525, CAS# 2216-51-5, Levomenthol



Cyclohexanol, 5-methyl-2-(1-methylethyl)-, (1à,2à,5à)-(ñ)-
Formula C10H20O, MW 156, CAS# 15356-70-4, Entry# 38982
Menthol, (ñ)-

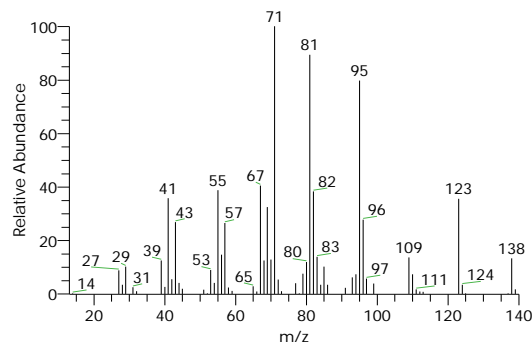
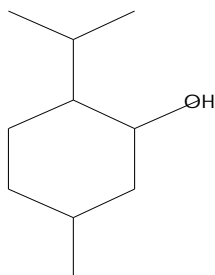


My GC-MS Report

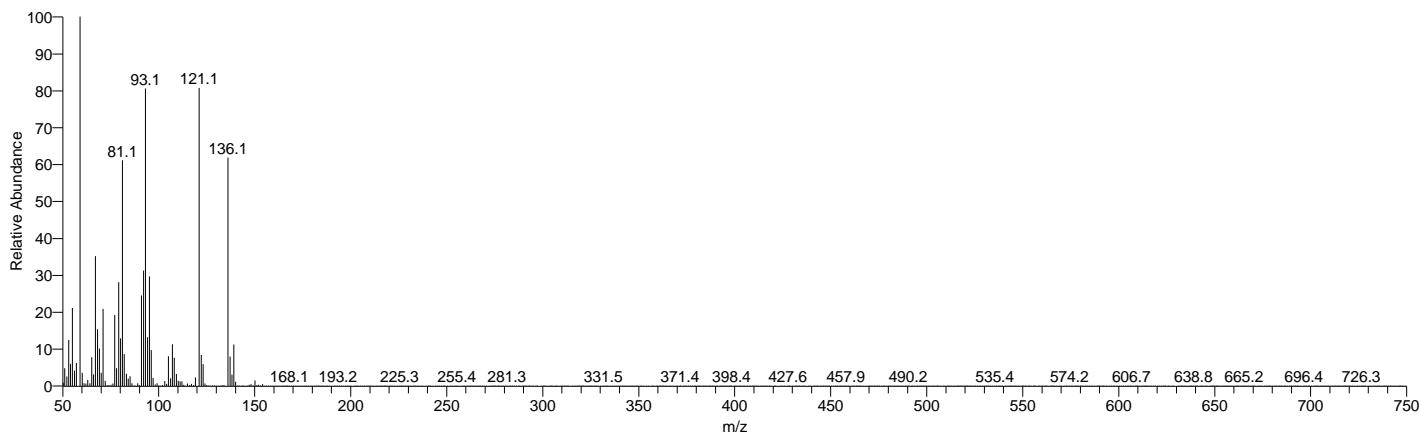
Compound Structure

Hit Spectrum

2-ISOPROPYL-5-METHYLCYCLOHEXANOL #
 Formula C₁₀H₂₀O, MW 156, CAS# 15356-70-4, Entry# 40741
 (+-)-(1R*,3R*,4S*)-MENTHOL



peppermint_oil #624 RT: 6.09 AV: 1 NL: 7.81E7
 T: + c EI Full ms [50.000-750.000]

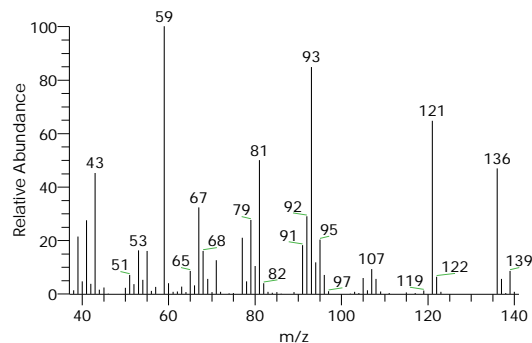


RT	Compound Name	Area %	MF	Molecular Formula	Molecular Weight	Cas #	Library
6.09	(-)-(1S,2R,4R)-BETA-FENCHOL	1.63	907	C ₁₀ H ₁₈ O	154	470-08-6	WileyRegi stry8e
6.09	3-CYCLOHEXENE-1-METHANOL, à,à,4-TRIMETHYL-	1.63	903	C ₁₀ H ₁₈ O	154	98-55-5	WileyRegi stry8e
6.09	3-CYCLOHEXENE-1-METHANOL, à,à,4-TRIMETHYL-, (S)-	1.63	903	C ₁₀ H ₁₈ O	154	10482-5-6-1	WileyRegi stry8e
6.09	L-à-Terpineol	1.63	899	C ₁₀ H ₁₈ O	154	10482-5-6-1	replib
6.09	(+)-ALPHA-TERPINEOL (P-MENTH-1-EN-8-OL)	1.63	898	C ₁₀ H ₁₈ O	154	NA	WileyRegi stry8e

Compound Structure

Hit Spectrum

(-)-(1S,2R,4R)-BETA-FENCHOL
 Formula C₁₀H₁₈O, MW 154, CAS# 470-08-6, Entry# 38737
 (-)-BETA-FENCHOL

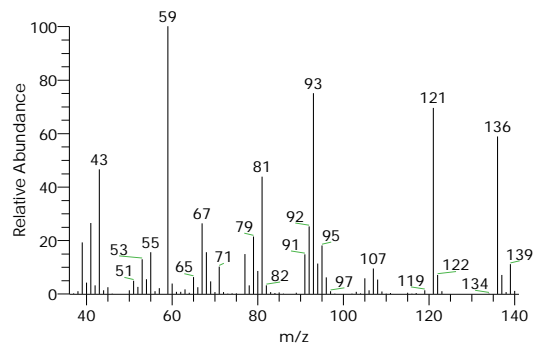
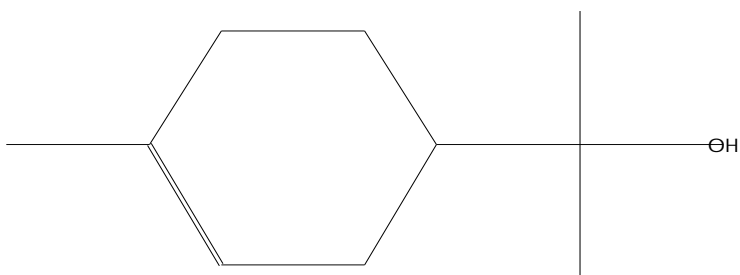


My GC-MS Report

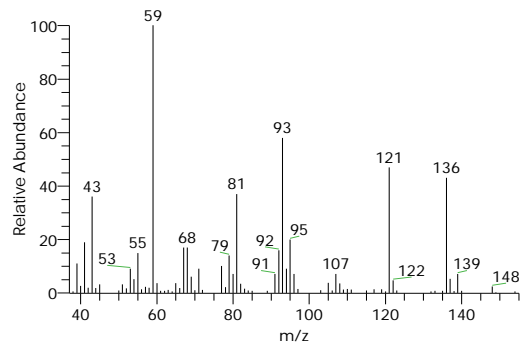
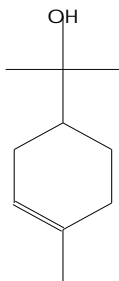
Compound Structure

Hit Spectrum

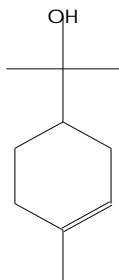
3-CYCLOHEXENE-1-METHANOL, $\alpha,\alpha,4$ -TRIMETHYL-
Formula C₁₀H₁₈O, MW 154, CAS# 98-55-5, Entry# 38742
3-CYCLOHEXENE-1-METHANOL, $\alpha,\alpha,4$ -TRIMETHYL-, (S)-



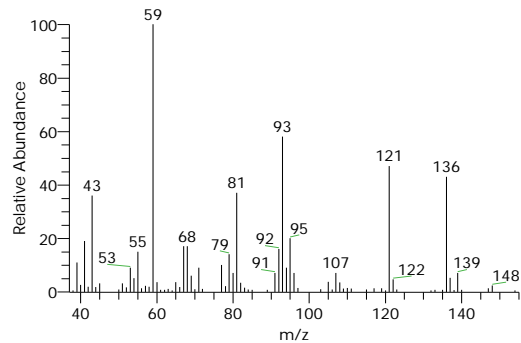
3-CYCLOHEXENE-1-METHANOL, $\alpha,\alpha,4$ -TRIMETHYL-, (S)-
Formula C₁₀H₁₈O, MW 154, CAS# 10482-56-1, Entry# 38379
2-(4-METHYL-3-CYCLOHEXEN-1-YL)-2-PROPANOL #



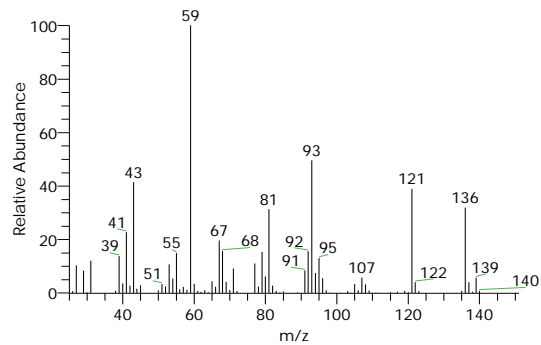
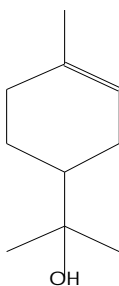
L- α -Terpineol
Formula C₁₀H₁₈O, MW 154, CAS# 10482-56-1, Entry# 7441
3-Cyclohexene-1-methanol, $\alpha,\alpha,4$ -trimethyl-, (S)-



SI 893, RSI 899, replib, Entry# 7441, CAS# 10482-56-1, L- α -Terpineol

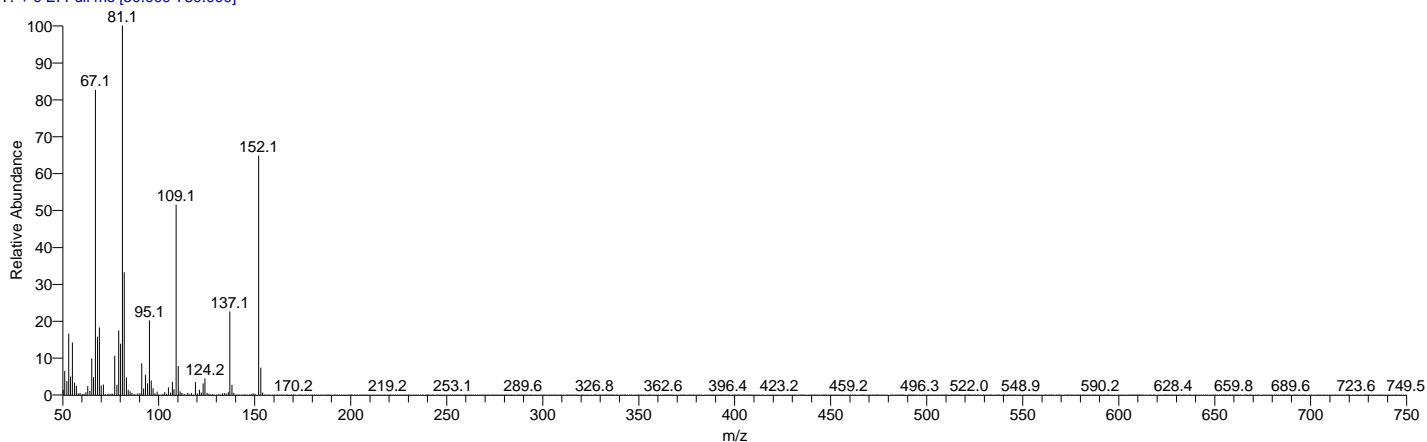


(+)-ALPHA-TERPINEOL (P-MENTH-1-EN-8-OL)
Formula C₁₀H₁₈O, MW 154, CAS# NA, Entry# 383373
2-(4-METHYL-3-CYCLOHEXEN-1-YL)-2-PROPANOL



My GC-MS Report

peppermint_oil #836 RT: 6.80 AV: 1 NL: 5.27E7
T: + c EI Full ms [50.000-750.000]

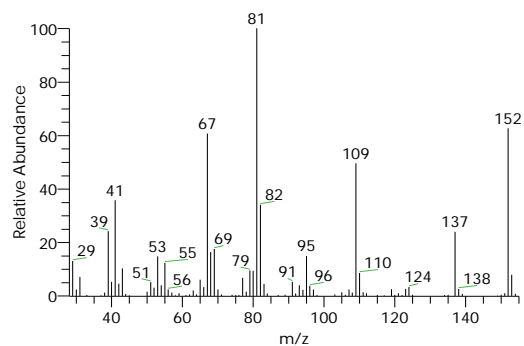
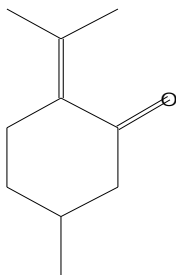


RT	Compound Name	Area %	MF	Molecular Formula	Molecular Weight	Cas #	Library
6.80	Cyclohexanone, 5-methyl-2-(1-methylethylidene)-	1.94	931	C10H16O	152	15932-8-0-6	replib
6.80	2-ISOPROPYLIDENE-5-METHYL-CYCLOHEXANONE	1.94	931	C10H16O	152	NA	WileyRegistry8e
6.80	CIS-ISOPULEGONE	1.94	922	C10H16O	152	NA	WileyRegistry8e
6.80	CYCLOHEXANONE, 5-METHYL-2-(1-METHYLETHYLIDENE)-, (R)-	1.94	919	C10H16O	152	89-82-7	WileyRegistry8e
6.80	CYCLOHEXANONE, 5-METHYL-2-(1-METHYLETHYLIDENE)-	1.94	915	C10H16O	152	15932-8-0-6	WileyRegistry8e

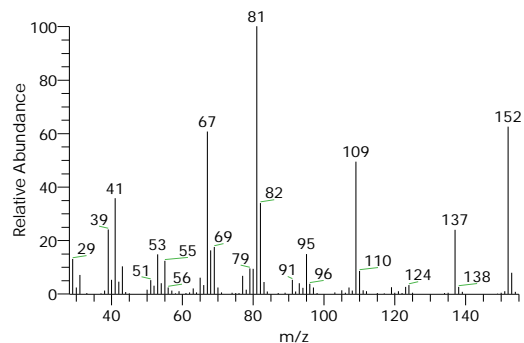
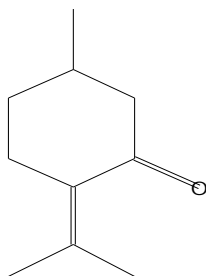
Compound Structure

Hit Spectrum

Cyclohexanone, 5-methyl-2-(1-methylethylidene)-
Formula C10H16O, MW 152, CAS# 15932-80-6, Entry# 11655
p-Menth-4(8)-en-3-one



2-ISOPROPYLIDENE-5-METHYL-CYCLOHEXANONE
Formula C10H16O, MW 152, CAS# NA, Entry# 370741
5-METHYL-2-(1-METHYLETHYLIDENE)CYCLOHEXANONE

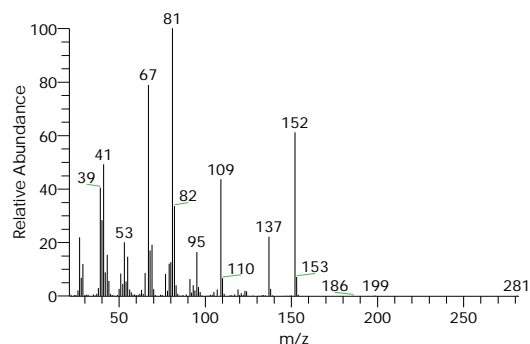


My GC-MS Report

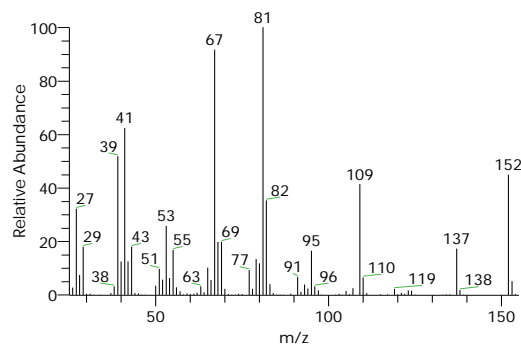
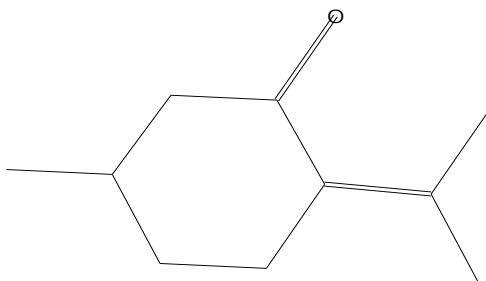
Compound Structure

Hit Spectrum

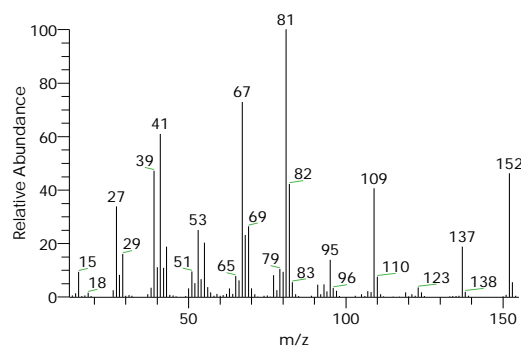
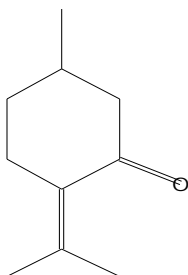
CIS-ISOPULEGONE
Formula C₁₀H₁₆O, MW 152, CAS# NA, Entry# 36394



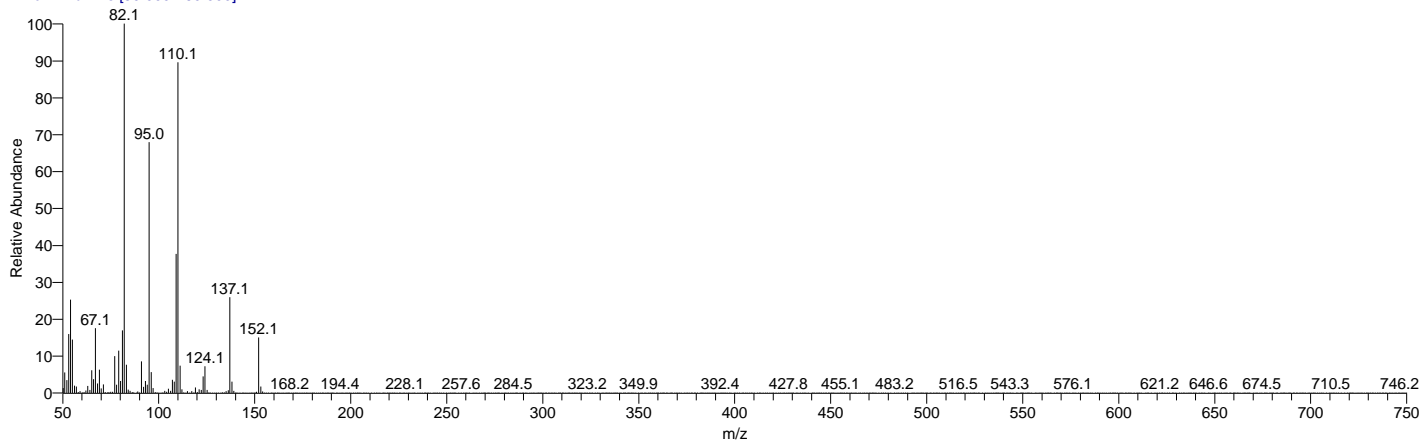
CYCLOHEXANONE, 5-METHYL-2-(1-METHYLETHYLIDENE)-, (R)-
Formula C₁₀H₁₆O, MW 152, CAS# 89-82-7, Entry# 36050
5-METHYL-2-(1-METHYLETHYLIDENE)CYCLOHEXANONE #



CYCLOHEXANONE, 5-METHYL-2-(1-METHYLETHYLIDENE)-
Formula C₁₀H₁₆O, MW 152, CAS# 15932-80-6, Entry# 36046
5-METHYL-2-(1-METHYLETHYLIDENE)CYCLOHEXANONE #



peppermint_oil #934 RT: 7.13 AV: 1 NL: 3.48E7
T: + c EI Full ms [50.000-750.000]



RT	Compound Name	Area %	MF	Molecular Formula	Molecular Weight	Cas #	Library
7.13	2-CYCLOHEXEN-1-ONE, 3-METHYL-6-(1-METHYLETHYL)-	1.32	914	C ₁₀ H ₁₆ O	152	89-81-6	WileyRegi stry8e
7.13	2-Cyclohexen-1-one, 3-methyl-6-(1-methylethyl)-	1.32	926	C ₁₀ H ₁₆ O	152	89-81-6	replib

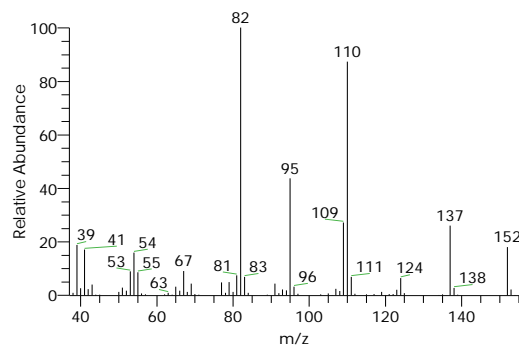
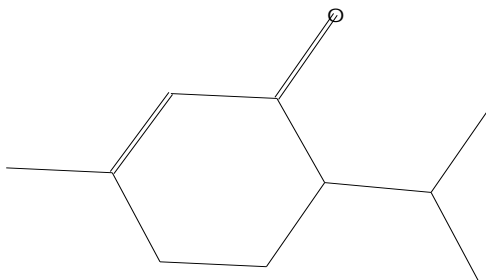
My GC-MS Report

RT	Compound Name	Area %	MF	Molecular Formula	Molecular Weight	Cas #	Library
7.13	2-Cyclohexen-1-one, 3-methyl-6-(1-methylethyl)-	1.32	912	C10H16O	152	89-81-6	replib
7.13	2-CYCLOHEXEN-1-ONE, 3-METHYL-6-(1-METHYLETHYL)-	1.32	903	C10H16O	152	89-81-6	WileyRegi stry8e
7.13	2-Cyclohexen-1-one, 3-methyl-6-(1-methylethyl)-	1.32	896	C10H16O	152	89-81-6	mainlib

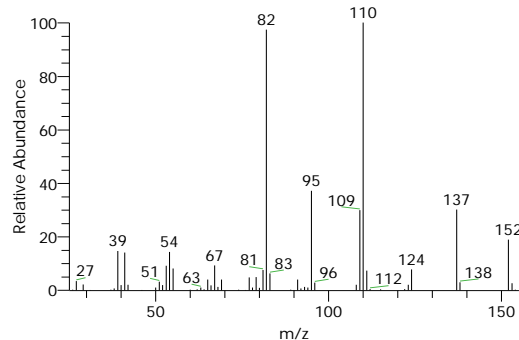
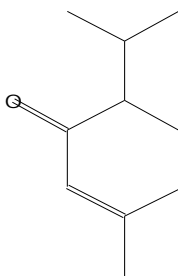
Compound Structure

Hit Spectrum

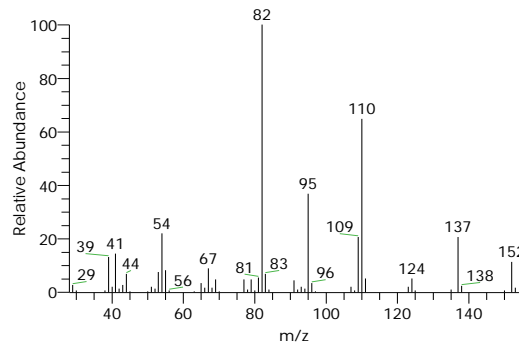
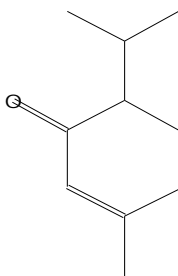
2-CYCLOHEXEN-1-ONE, 3-METHYL-6-(1-METHYLETHYL)-
Formula C10H16O, MW 152, CAS# 89-81-6, Entry# 35991
6-ISOPROPYL-3-METHYL-2-CYCLOHEXEN-1-ONE #



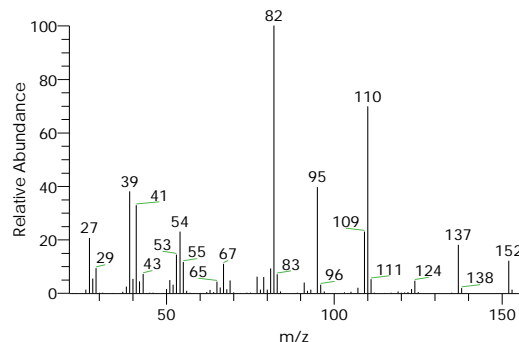
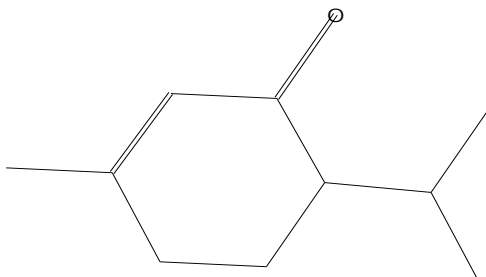
2-Cyclohexen-1-one, 3-methyl-6-(1-methylethyl)-
Formula C10H16O, MW 152, CAS# 89-81-6, Entry# 17471
p-Menth-1-en-3-one



2-Cyclohexen-1-one, 3-methyl-6-(1-methylethyl)-
Formula C10H16O, MW 152, CAS# 89-81-6, Entry# 11813
p-Menth-1-en-3-one



2-CYCLOHEXEN-1-ONE, 3-METHYL-6-(1-METHYLETHYL)-
Formula C10H16O, MW 152, CAS# 89-81-6, Entry# 35994
6-ISOPROPYL-3-METHYL-2-CYCLOHEXEN-1-ONE #

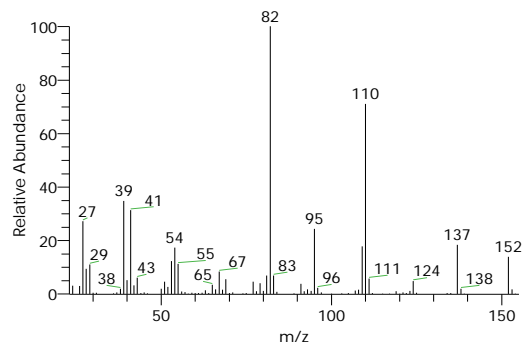
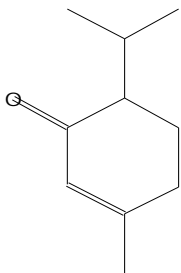


My GC-MS Report

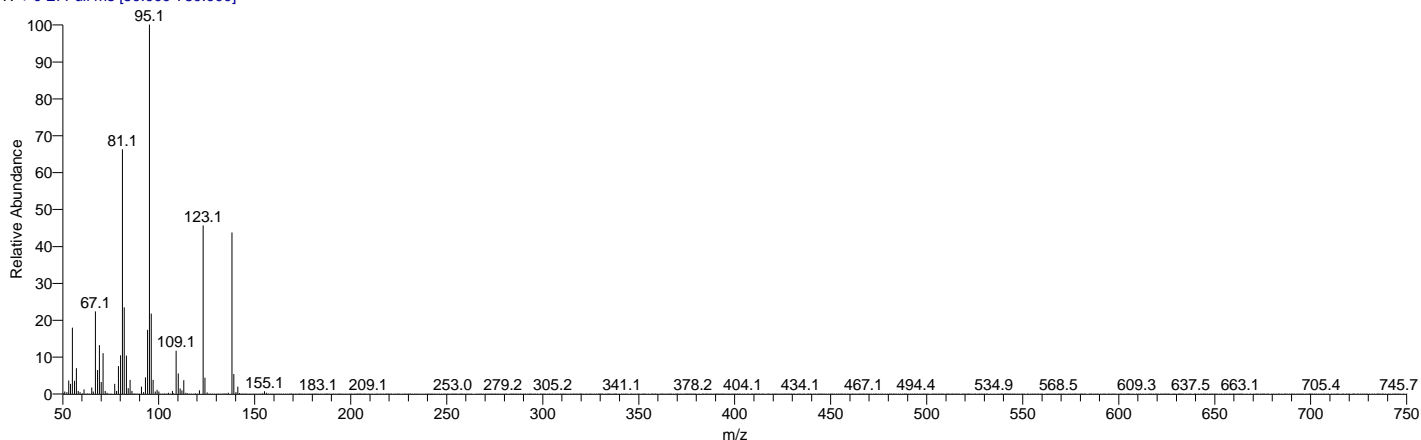
Compound Structure

Hit Spectrum

2-Cyclohexen-1-one, 3-methyl-6-(1-methylethyl)-
Formula C10H16O, MW 152, CAS# 89-81-6, Entry# 51632
p-Menth-1-en-3-one



peppermint_oil #1188 RT: 7.98 AV: 1 NL: 3.00E8
T: + c EI Full ms [50.000-750.000]

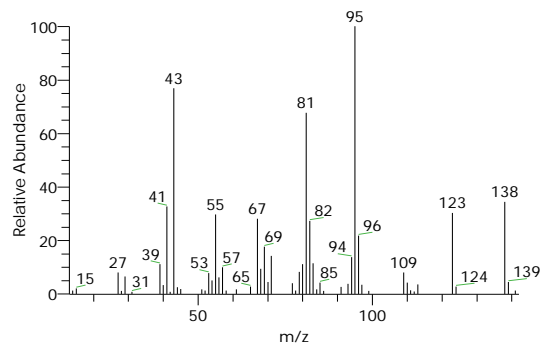
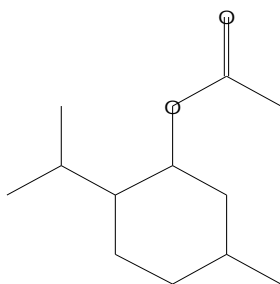


RT	Compound Name	Area %	MF	Molecular Formula	Molecular Weight	Cas #	Library
7.98	Cyclohexanol, 5-methyl-2-(1-methylethyl)-, acetate	32.76	967	C12H22O2	198	16409-4	replib
7.98	CYCLOHEXANOL, 5-METHYL-2-(1-METHYLETHYL)-, ACETATE	32.76	959	C12H22O2	198	2623-2	WileyRegistry8e
7.98	Menthyl acetate	32.76	951	C12H22O2	198	89-48-5	mainlib
7.98	Menthyl acetate	32.76	948	C12H22O2	198	89-48-5	replib
7.98	CYCLOHEXANOL, 5-METHYL-2-(1-METHYLETHYL)-, ACETATE	32.76	948	C12H22O2	198	16409-4	WileyRegistry8e

Compound Structure

Hit Spectrum

Cyclohexanol, 5-methyl-2-(1-methylethyl)-, acetate
Formula C12H22O2, MW 198, CAS# 16409-45-3, Entry# 14465
Menthol, acetate

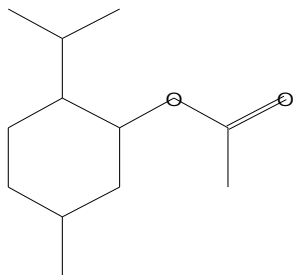


My GC-MS Report

Compound Structure

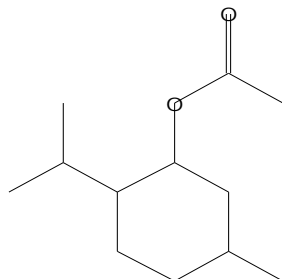
Hit Spectrum

CYCLOHEXANOL, 5-METHYL-2-(1-METHYLETHYL)-, ACETATE
Formula C₁₂H₂₂O₂, MW 198, CAS# 2623-23-6, Entry# 82542
CYCLOHEXANOL, 5-METHYL-2-(1-METHYLETHYL)-, ACETATE, [1R-(1a,2a,5a)]-



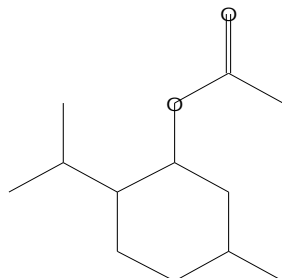
Menthyl acetate

Formula C₁₂H₂₂O₂, MW 198, CAS# 89-48-5, Entry# 10354
Cyclohexanol, 5-methyl-2-(1-methylethyl)-, acetate, (1a,2a,5a)-

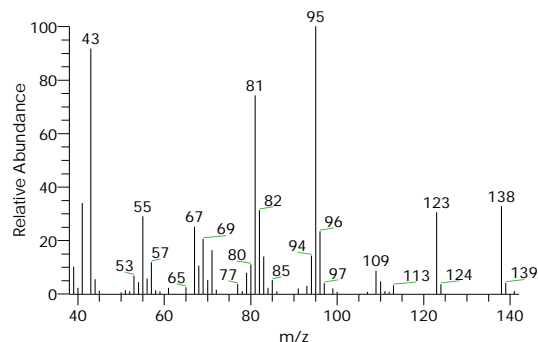
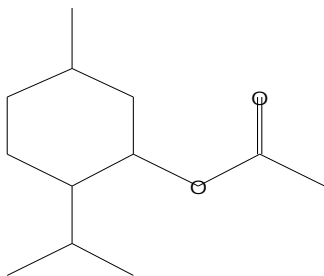


Menthyl acetate

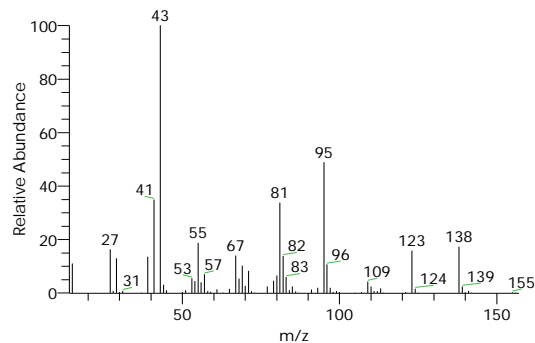
Formula C₁₂H₂₂O₂, MW 198, CAS# 89-48-5, Entry# 3027
Cyclohexanol, 5-methyl-2-(1-methylethyl)-, acetate, (1a,2a,5a)-



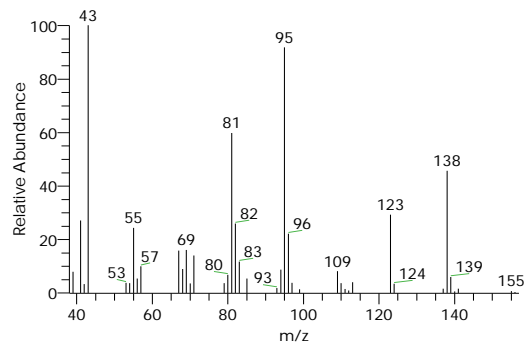
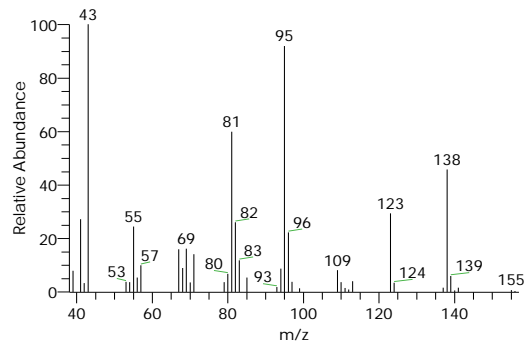
CYCLOHEXANOL, 5-METHYL-2-(1-METHYLETHYL)-, ACETATE
Formula C₁₂H₂₂O₂, MW 198, CAS# 16409-45-3, Entry# 82538
2-ISOPROPYL-5-METHYLCYCLOHEXYL ACETATE #



SI 931, RSI 951, mainlib, Entry# 10354, CAS# 89-48-5, Menthyl acetate

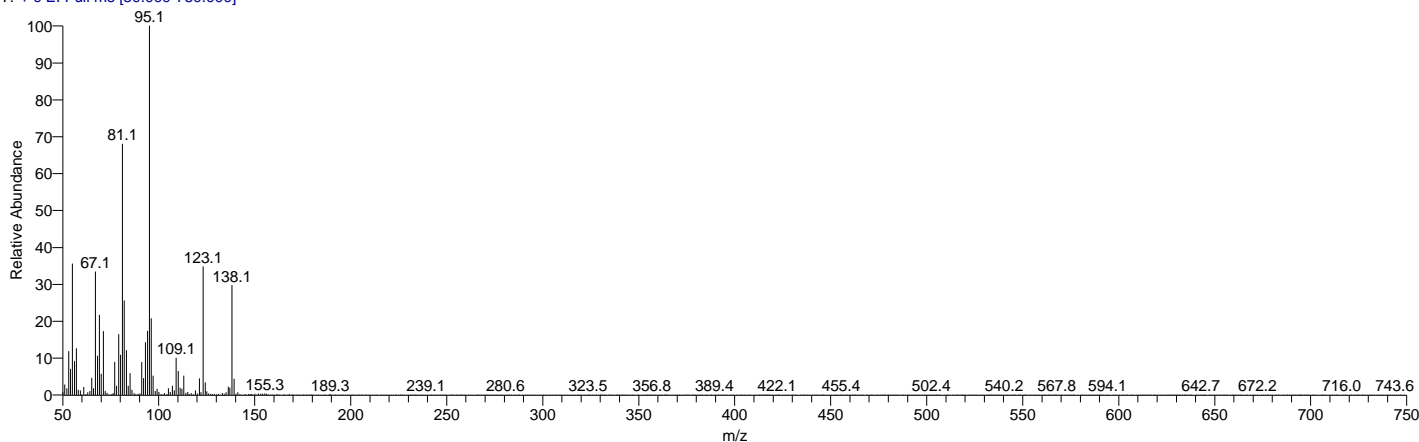


SI 930, RSI 948, replib, Entry# 3027, CAS# 89-48-5, Menthyl acetate



My GC-MS Report

peppermint_oil #1241 RT: 8.16 AV: 1 NL: 8.37E6
T: + c EI Full ms [50.000-750.000]

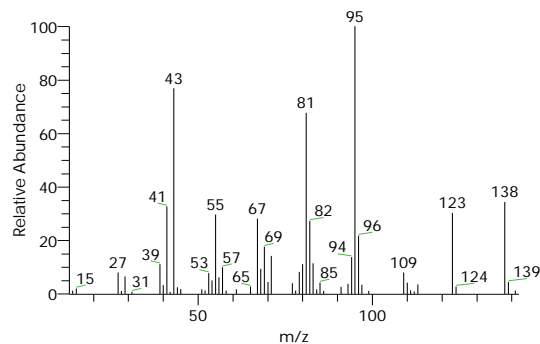
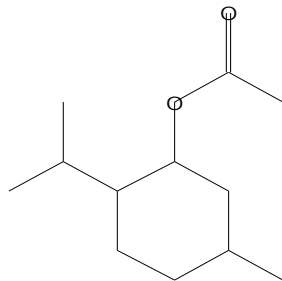


RT	Compound Name	Area %	MF	Molecular Formula	Molecular Weight	Cas #	Library
8.16	Cyclohexanol, 5-methyl-2-(1-methylethyl)-, acetate	0.21	955	C12H22O2	198	16409-4	replib
8.16	CYCLOHEXANOL, 5-METHYL-2-(1-METHYLETHYL)-, ACETATE	0.21	942	C12H22O2	198	2623-2	WileyRegistry8e
8.16	CYCLOHEXANOL, 5-METHYL-2-(1-METHYLETHYL)-, ACETATE	0.21	916	C12H22O2	198	16409-4	WileyRegistry8e
8.16	Menthyl acetate	0.21	939	C12H22O2	198	89-48-5	mainlib
8.16	CYCLOHEXANOL, 5-METHYL-2-(1-METHYLETHYL)-, ACETATE	0.21	916	C12H22O2	198	16409-4	WileyRegistry8e

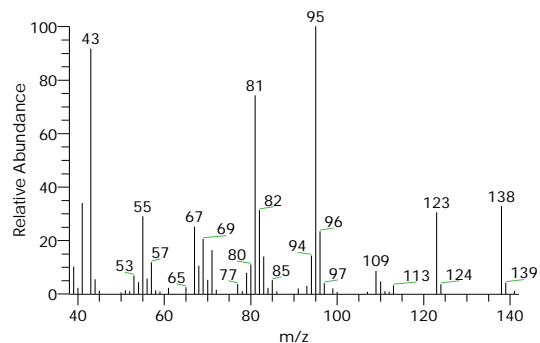
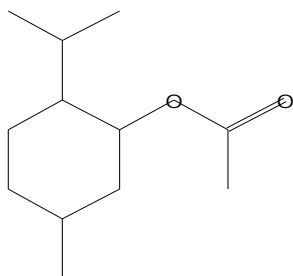
Compound Structure

Hit Spectrum

Cyclohexanol, 5-methyl-2-(1-methylethyl)-, acetate
Formula C12H22O2, MW 198, CAS# 16409-45-3, Entry# 14465
Menthyl acetate



CYCLOHEXANOL, 5-METHYL-2-(1-METHYLETHYL)-, ACETATE
Formula C12H22O2, MW 198, CAS# 2623-23-6, Entry# 82542
CYCLOHEXANOL, 5-METHYL-2-(1-METHYLETHYL)-, ACETATE, [1R-(1a,2a,5a)]-

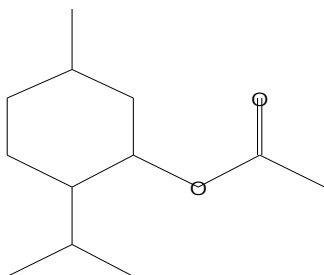


My GC-MS Report

Compound Structure

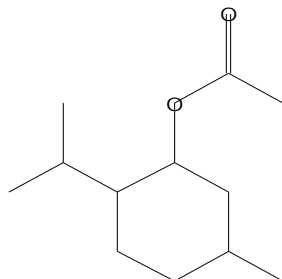
Hit Spectrum

CYCLOHEXANOL, 5-METHYL-2-(1-METHYLETHYL)-, ACETATE
 Formula C₁₂H₂₂O₂, MW 198, CAS# 16409-45-3, Entry# 82536
 2-ISOPROPYL-5-METHYLCYCLOHEXYL ACETATE #

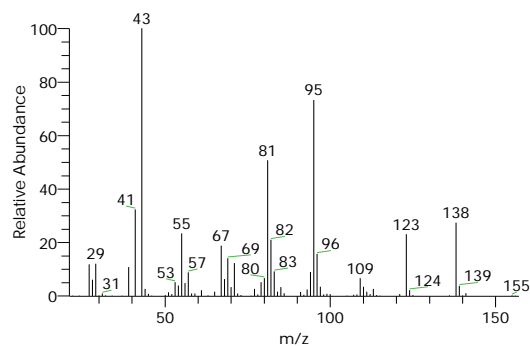
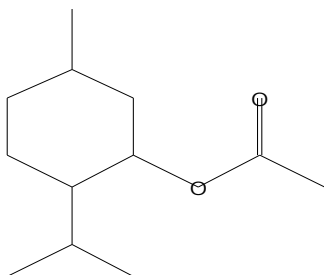


Menthyl acetate

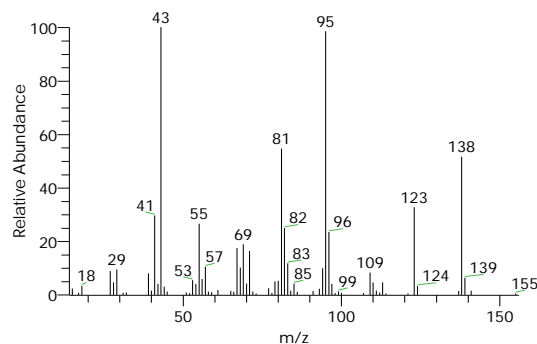
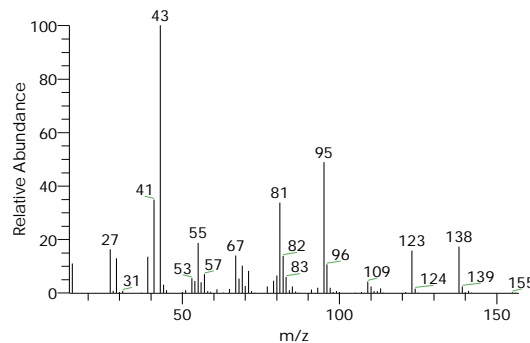
Formula C₁₂H₂₂O₂, MW 198, CAS# 89-48-5, Entry# 10354
 Cyclohexanol, 5-methyl-2-(1-methylethyl)-, acetate, (1à,2à,5à)-



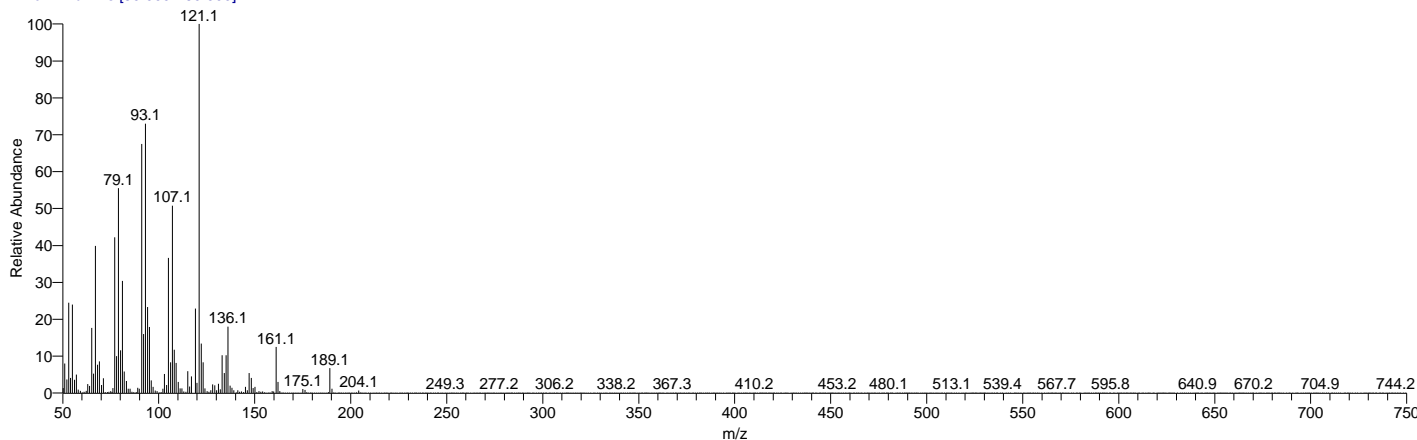
CYCLOHEXANOL, 5-METHYL-2-(1-METHYLETHYL)-, ACETATE
 Formula C₁₂H₂₂O₂, MW 198, CAS# 16409-45-3, Entry# 82534
 2-ISOPROPYL-5-METHYLCYCLOHEXYL ACETATE #



SI 894, RSI 939, mainlib, Entry# 10354, CAS# 89-48-5, Menthyl acetate



peppermint_oil #1392 RT: 8.67 AV: 1 NL: 7.27E6
 T: + c EI Full ms [50.000-750.000]



RT	Compound Name	Area %	MF	Molecular Formula	Molecular Weight	Cas #	Library
8.67	BICYCLO[8.1.0]UNDECA-2,6-DIENE, 3,7,11,11-TETRAMETHYL-, (1R*,2Z,6E,10R*)-(+,-)-	0.46	902	C ₁₅ H ₂₄	204	100762-46-7	WileyRegistry8e
8.67	Elemene isomer	0.46	927	C ₁₅ H ₂₄	204	NA	mainlib

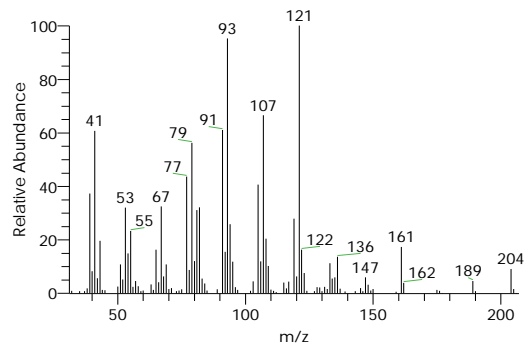
My GC-MS Report

RT	Compound Name	Area %	MF	Molecular Formula	Molecular Weight	Cas #	Library
8.67	ç-Elemene	0.46	885	C15H24	204	29873-9	replib
8.67	Cyclohexane, 1-ethenyl-1-methyl-2-(1-methylethenyl)-4-(1-methylethylidene)-	0.46	901	C15H24	204	3242-0	mainlib
8.67	ç-Elemene	0.46	867	C15H24	204	29873-9	mainlib

Compound Structure

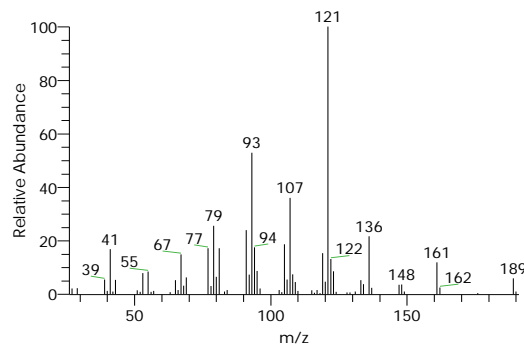
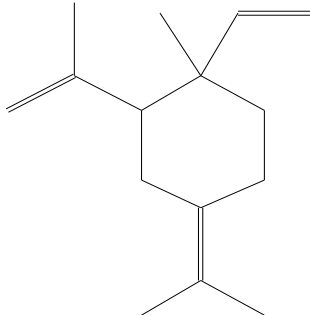
Hit Spectrum

BICYCLO[8.1.0]UNDECA-2,6-DIENE, 3,7,11,11-TETRAMETHYL-, (1R*,2Z,6E,10R*)-(.-.-)-
 Formula C15H24, MW 204, CAS# 100762-46-7, Entry# 89533
 (.+.-)-LEPIDOZENE



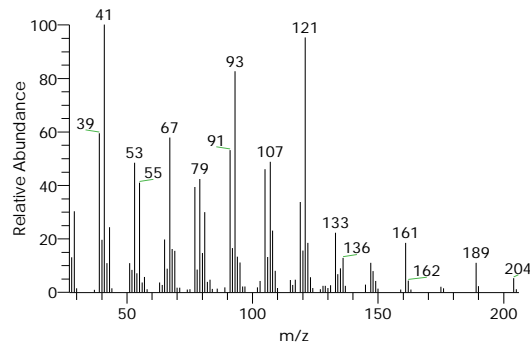
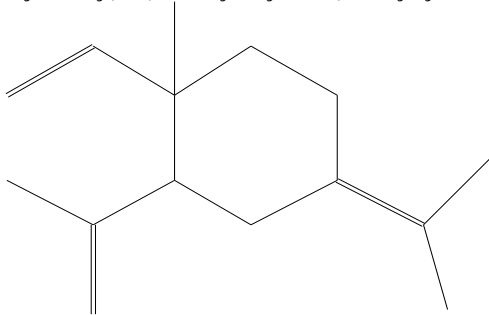
SI 890, RSI 927, mainlib, Entry# 102822, CAS# NA, Elemene isomer

Elemene isomer
 Formula C15H24, MW 204, CAS# NA, Entry# 102822
 \$:28BQSLMQNYHVFRDT-UHFFFAOYSA-N

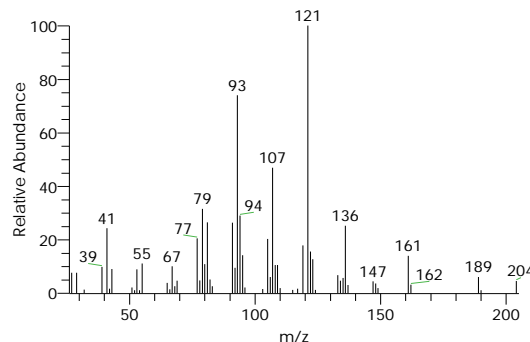
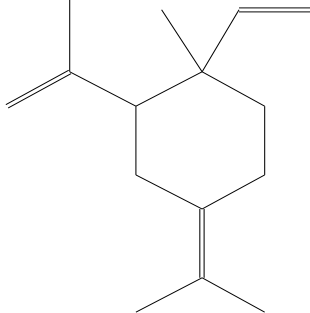


SI 873, RSI 885, replib, Entry# 1378, CAS# 29873-99-2, ç-Elemene

ç-Elemene
 Formula C15H24, MW 204, CAS# 29873-99-2, Entry# 1378
 1-Methyl-2-(1-methylethenyl)-4-(1-methylethylidene)-1-vinylcyclohexane, (1R-trans)-



Cyclohexane, 1-ethenyl-1-methyl-2-(1-methylethenyl)-4-(1-methylethylidene)-
 Formula C15H24, MW 204, CAS# 3242-08-8, Entry# 102823
 o-Menth-8-ene, 4-isopropylidene-1-vinyl-



My GC-MS Report

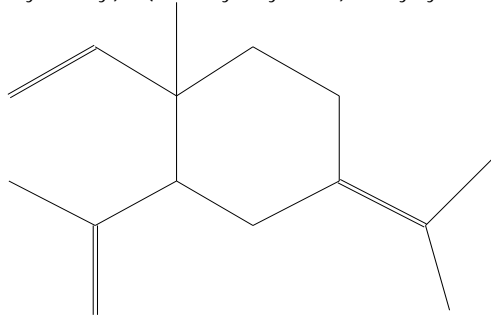
Compound Structure

Hit Spectrum

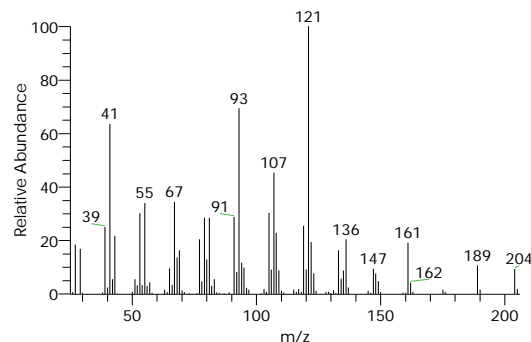
ç-Elemene

Formula C₁₅H₂₄, MW 204, CAS# 29873-99-2, Entry# 102784

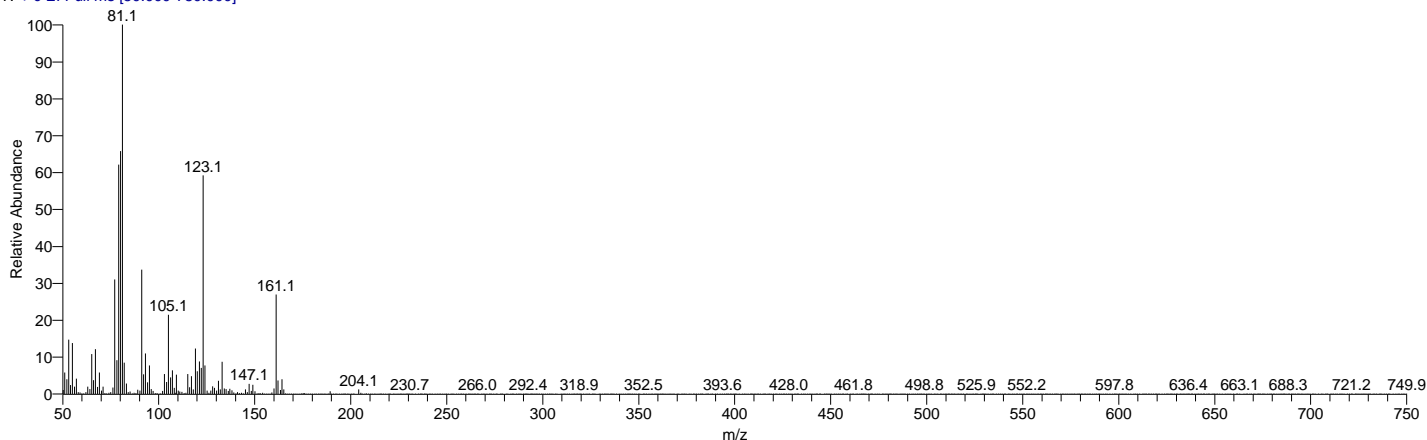
1-Methyl-2-(1-methylethenyl)-4-(1-methylethylidene)-1-vinylcyclohexane, (1R-trans)-



SI 859, RSI 867, mainlib, Entry# 102784, CAS# 29873-99-2, ç-Elemene



peppermint_oil #1710 RT: 9.73 AV: 1 NL: 1.19E7
T: + c EI Full ms [50.000-750.000]



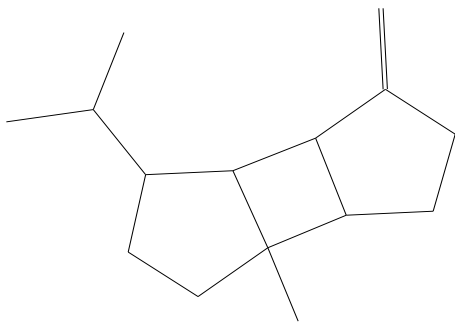
RT	Compound Name	Area %	MF	Molecular Formula	Molecular Weight	Cas #	Library
9.73	CYCLOBUTA[1,2:3,4]DICYCLOP ENTENE, 1,2,3,3A,3Bá,4,5,6,6Aá,6Bà-DECA HYDRO-1à-ISOPRO PYL-3Aà-METHYL-6-METHYLEN E-	0.58	931	C ₁₅ H ₂₄	204	5208-5 9-3	WileyRegi stry8e
9.73	(-)-á-Bourbonene	0.58	896	C ₁₅ H ₂₄	204	5208-5 9-3	replib
9.73	CYCLOBUTA[1,2:3,4]DICYCLOP ENTENE, 1,2,3,3A,3Bá,4,5,6,6Aá,6Bà-DECA HYDRO-1à-ISOPRO PYL-3Aà-METHYL-6-METHYLEN E-	0.58	874	C ₁₅ H ₂₄	204	5208-5 9-3	WileyRegi stry8e
9.73	(-)-á-Bourbonene	0.58	873	C ₁₅ H ₂₄	204	5208-5 9-3	mainlib
9.73	CYCLOBUTA[1,2:3,4]DICYCLOP ENTENE, 1,2,3,3A,3Bá,4,5,6,6Aá,6Bà-DECA HYDRO-1à-ISOPRO PYL-3Aà-METHYL-6-METHYLEN E-	0.58	898	C ₁₅ H ₂₄	204	5208-5 9-3	WileyRegi stry8e

My GC-MS Report

Compound Structure

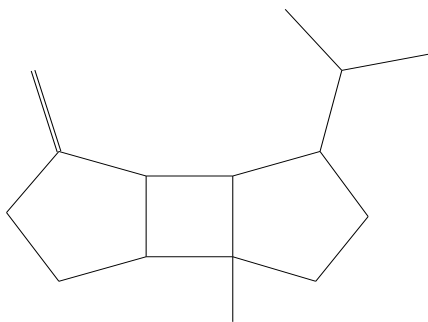
Hit Spectrum

Formula C₁₅H₂₄, MW 204, CAS# 5208-59-3, Entry# 89559



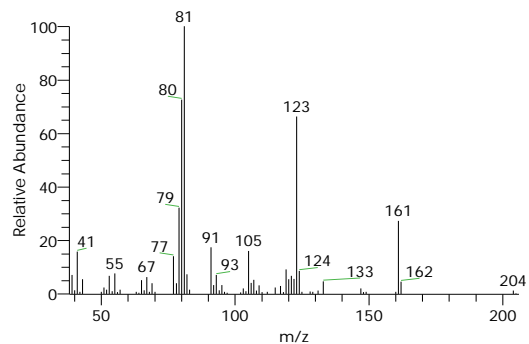
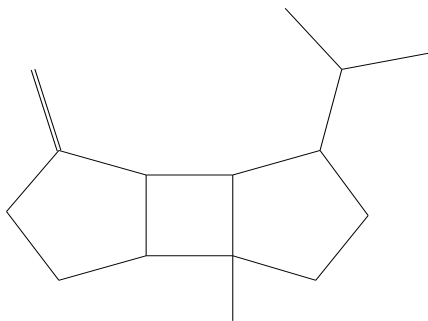
(-)- α -Bourbonene

Formula C₁₅H₂₄, MW 204, CAS# 5208-59-3, Entry# 11633

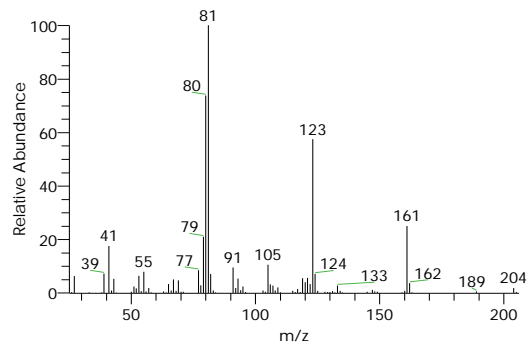
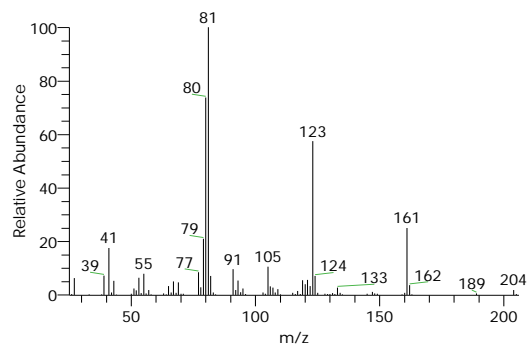
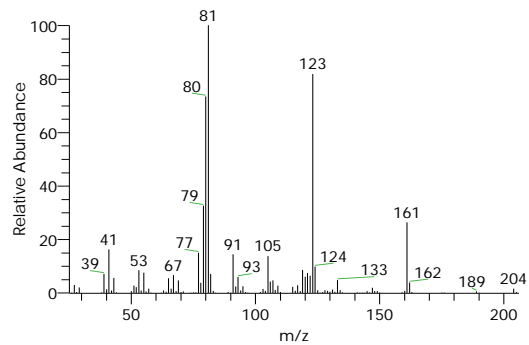


(-)- α -Bourbonene

Formula C₁₅H₂₄, MW 204, CAS# 5208-59-3, Entry# 50341



SI 885, RSI 896, replib, Entry# 11633, CAS# 5208-59-3, (-)- α -Bourbonene

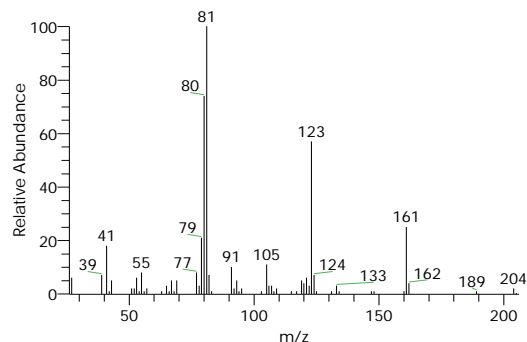
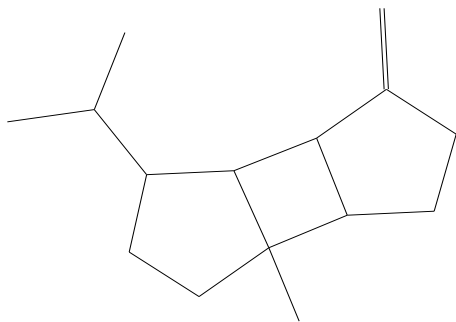


My GC-MS Report

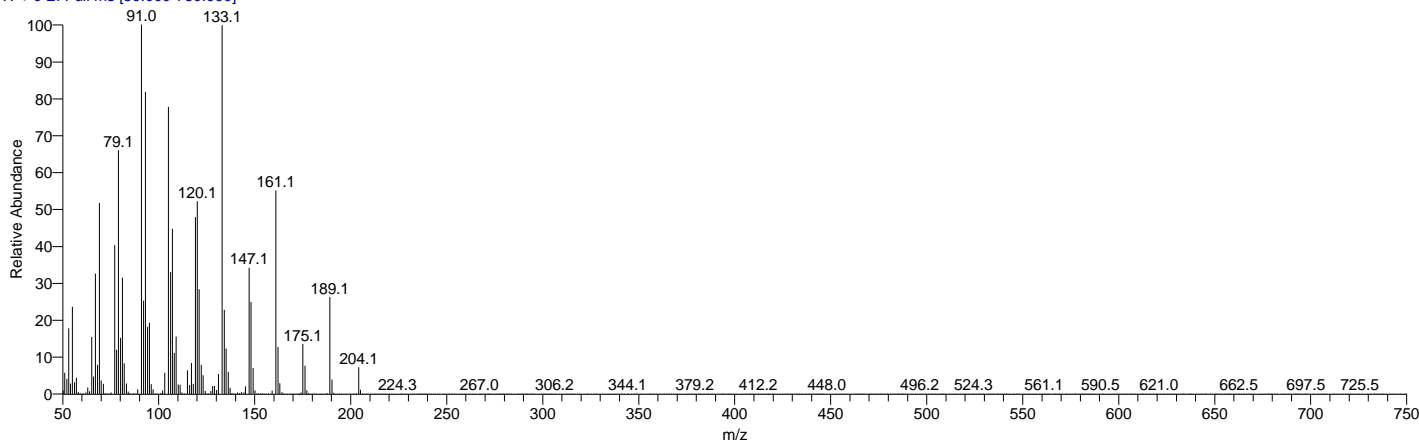
Compound Structure

Hit Spectrum

Formula C15H24, MW 204, CAS# 5208-59-3, Entry# 89479



peppermint_oil #1974 RT: 10.62 AV: 1 NL: 1.11E8
T: + c EI Full ms [50.000-750.000]



RT	Compound Name	Area %	MF	Molecular Formula	Molecular Weight	Cas #	Library
10.62	Caryophyllene	18.48	941	C15H24	204	87-44-5	mainlib
10.62	BICYCLO[7.2.0]UNDEC-4-ENE, 4,11,11-TRIMETHYL-8-METHYLENE-, [1R-(1R*,4E,9S*)]-	18.48	941	C15H24	204	87-44-5	WileyRegistry8e
10.62	BICYCLO[7.2.0]UNDEC-4-ENE, 4,11,11-TRIMETHYL-8-METHYLENE-, [1R-(1R*,4E,9S*)]-	18.48	932	C15H24	204	87-44-5	WileyRegistry8e
10.62	TRANS(Δ)-CARYOPHYLLENE	18.48	924	C15H24	204	NA	WileyRegistry8e
10.62	Isocaryophyllene	18.48	918	C15H24	204	NA	mainlib

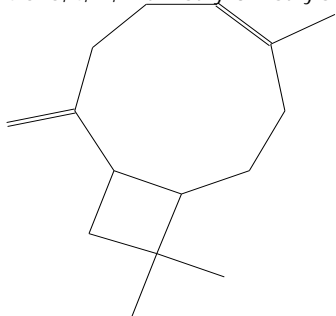
Compound Structure

Hit Spectrum

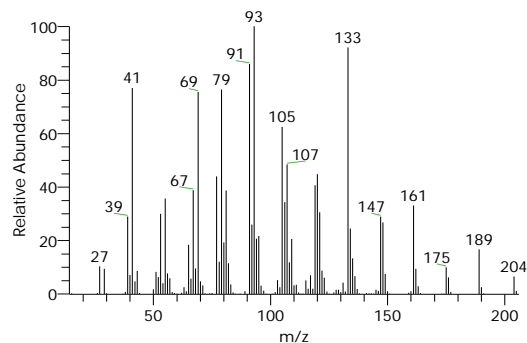
Caryophyllene

Formula C15H24, MW 204, CAS# 87-44-5, Entry# 66572

Bicyclo[7.2.0]undec-4-ene, 4,11,11-trimethyl-8-methylene-, [1R-(1R*,4E,9S*)]-



SI 941, RSI 941, mainlib, Entry# 66572, CAS# 87-44-5, Caryophyllene

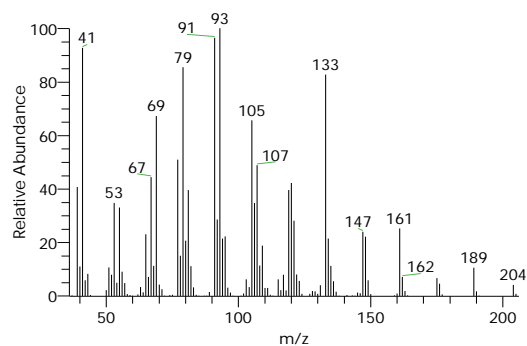
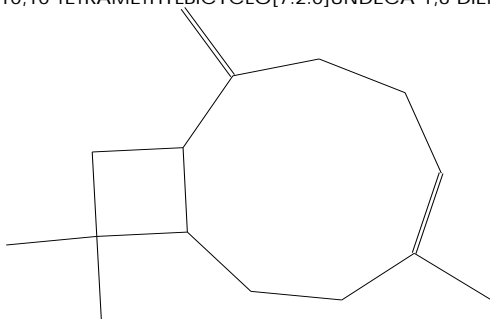


My GC-MS Report

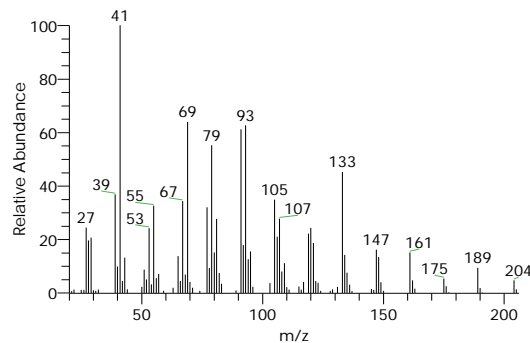
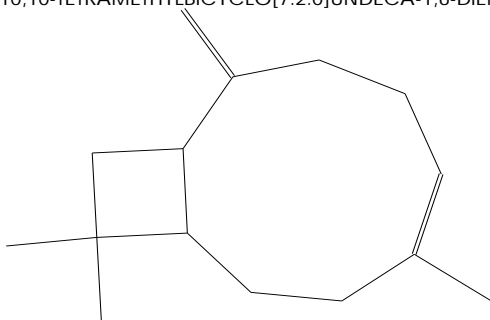
Compound Structure

Hit Spectrum

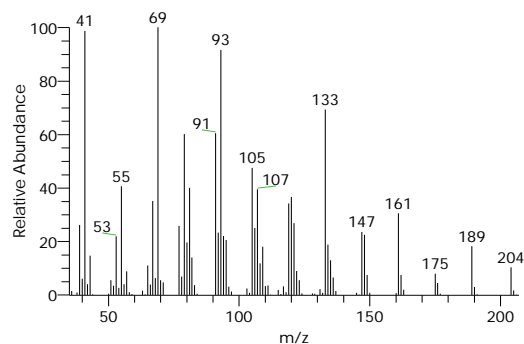
BICYCLO[7.2.0]UNDEC-4-ENE, 4,11,11-TRIMETHYL-8-METHYLENE-, [1R-(1R*,4E,9S*)]-
Formula C₁₅H₂₄, MW 204, CAS# 87-44-5, Entry# 89162
2,6,10,10-TETRAMETHYLBICYCLO[7.2.0]UNDECA-1,6-DIENE #



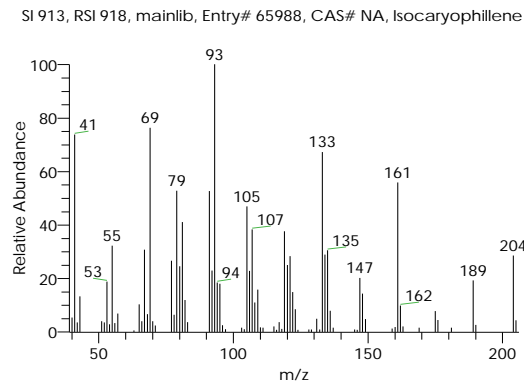
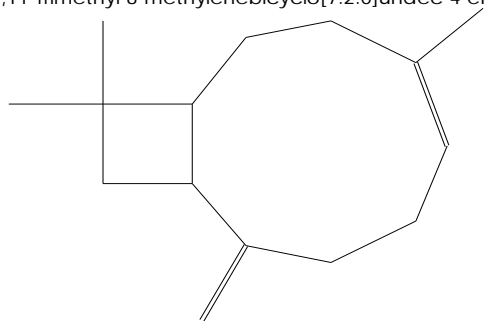
BICYCLO[7.2.0]UNDEC-4-ENE, 4,11,11-TRIMETHYL-8-METHYLENE-, [1R-(1R*,4E,9S*)]-
Formula C₁₅H₂₄, MW 204, CAS# 87-44-5, Entry# 89170
2,6,10,10-TETRAMETHYLBICYCLO[7.2.0]UNDECA-1,6-DIENE #



TRANS(α)-CARYOPHYLLENE
Formula C₁₅H₂₄, MW 204, CAS# NA, Entry# 89641



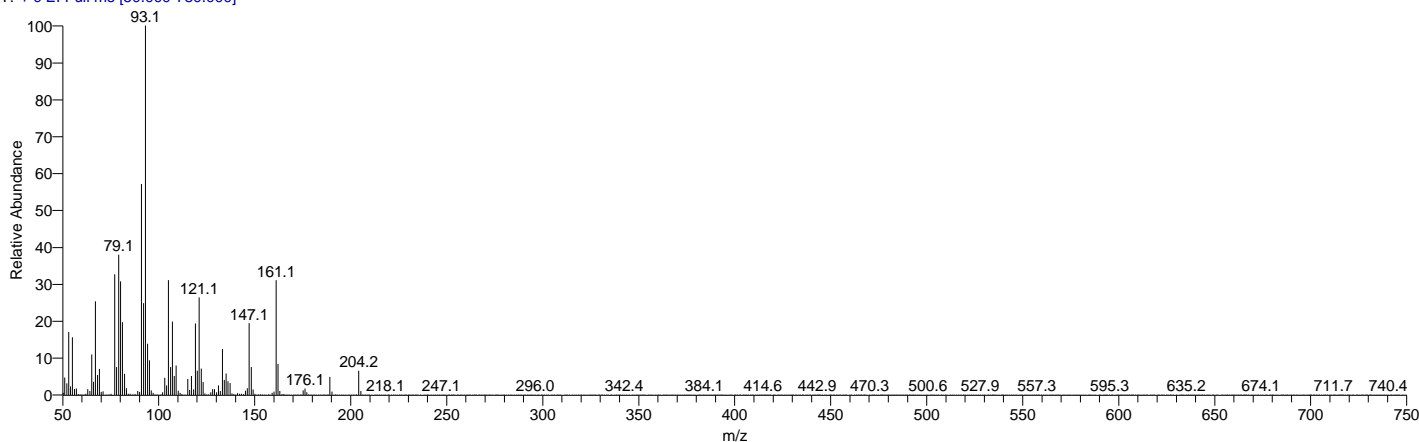
Isocaryophyllene
Formula C₁₅H₂₄, MW 204, CAS# NA, Entry# 65988
4,11,11-Trimethyl-8-methylenebicyclo[7.2.0]undec-4-ene #



SI 913, RSI 918, mainlib, Entry# 65988, CAS# NA, Isocaryophyllene

My GC-MS Report

peppermint_oil #2185 RT: 11.32 AV: 1 NL: 2.80E7
T: + c EI Full ms [50.000-750.000]

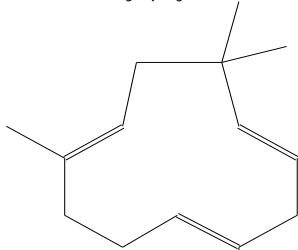


RT	Compound Name	Area %	MF	Molecular Formula	Molecular Weight	Cas #	Library
11.32	Humulene	1.41	887	C ₁₅ H ₂₄	204	6753-98-6	replib
11.32	cis-à-Bisabolene	1.41	878	C ₁₅ H ₂₄	204	29837-07-8	mainlib
11.32	1,4,8-CYCLOUNDECATRIENE, 2,6,6,9-TETRAMETHYL-, (E,E,E)-	1.41	864	C ₁₅ H ₂₄	204	6753-98-6	WileyRegistry8e
11.32	NAPHTHALENE, 1,2,3,5,6,7,8,8A-OCTAHYDRO-1,8A-DIMETHYL-7-(1-METHYLETHENYL)-, [1R-(1à,7á,8Aà)]-	1.41	862	C ₁₅ H ₂₄	204	4630-07-3	WileyRegistry8e
11.32	CYCLOHEXENE, 4-(1,5-DIMETHYL-1,4-HEXADIENYL)-1-METHYL-	1.41	878	C ₁₅ H ₂₄	204	17627-44-0	WileyRegistry8e

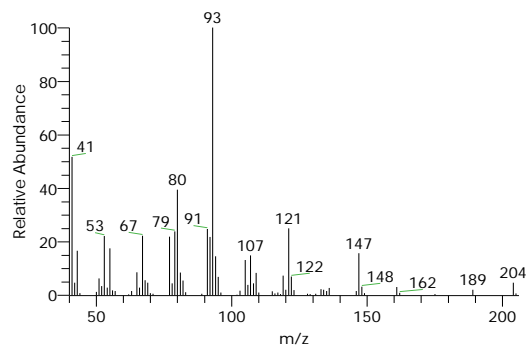
Compound Structure

Hit Spectrum

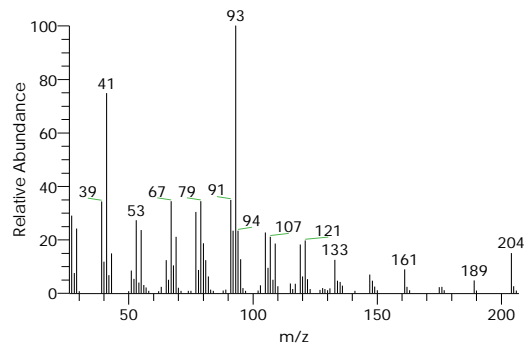
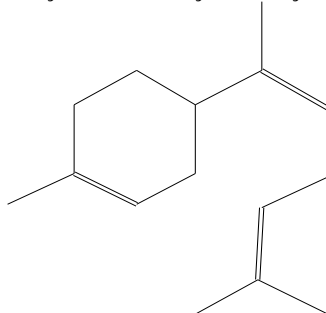
Humulene
Formula C₁₅H₂₄, MW 204, CAS# 6753-98-6, Entry# 14003
à-Caryophyllene



SI 868, RSI 887, replib, Entry# 14003, CAS# 6753-98-6, Humulene



cis-à-Bisabolene
Formula C₁₅H₂₄, MW 204, CAS# 29837-07-8, Entry# 65792
4-[(1Z)-1,5-Dimethyl-1,4-hexadienyl]-1-methyl-1-cyclohexene

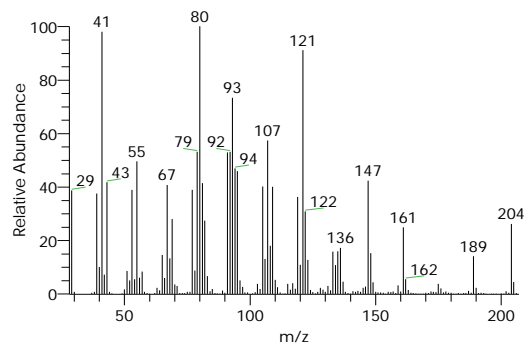
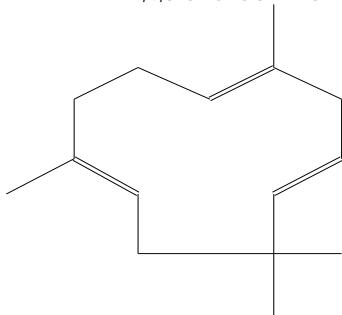


My GC-MS Report

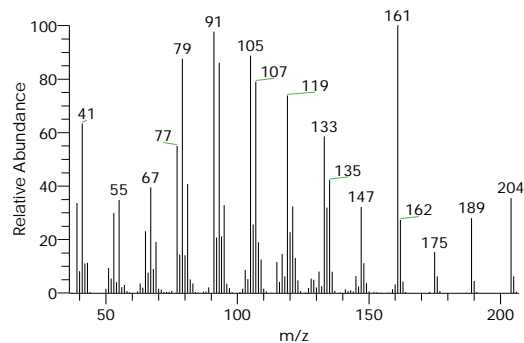
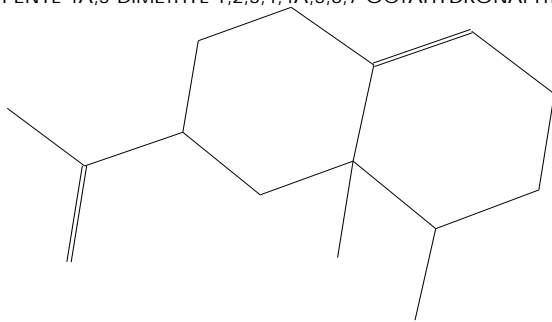
Compound Structure

Hit Spectrum

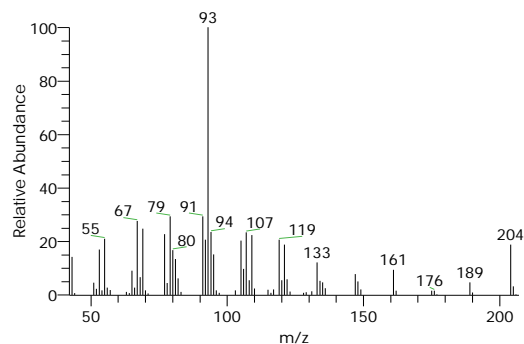
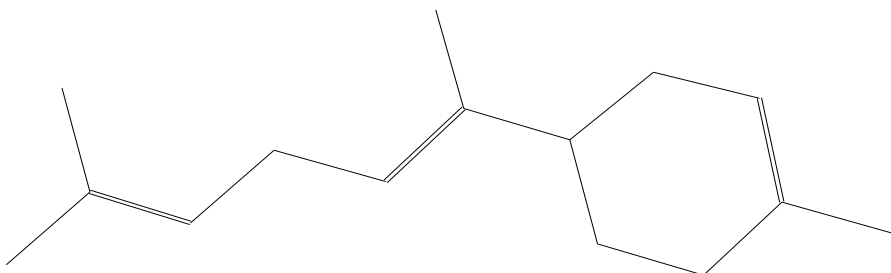
1,4,8-CYCLOUNDECATRIENE, 2,6,6,9-TETRAMETHYL-, (E,E,E)-
Formula C₁₅H₂₄, MW 204, CAS# 6753-98-6, Entry# 89111
2,6,6,9-TETRAMETHYL-1,4,8-CYCLOUNDECATRIENE #



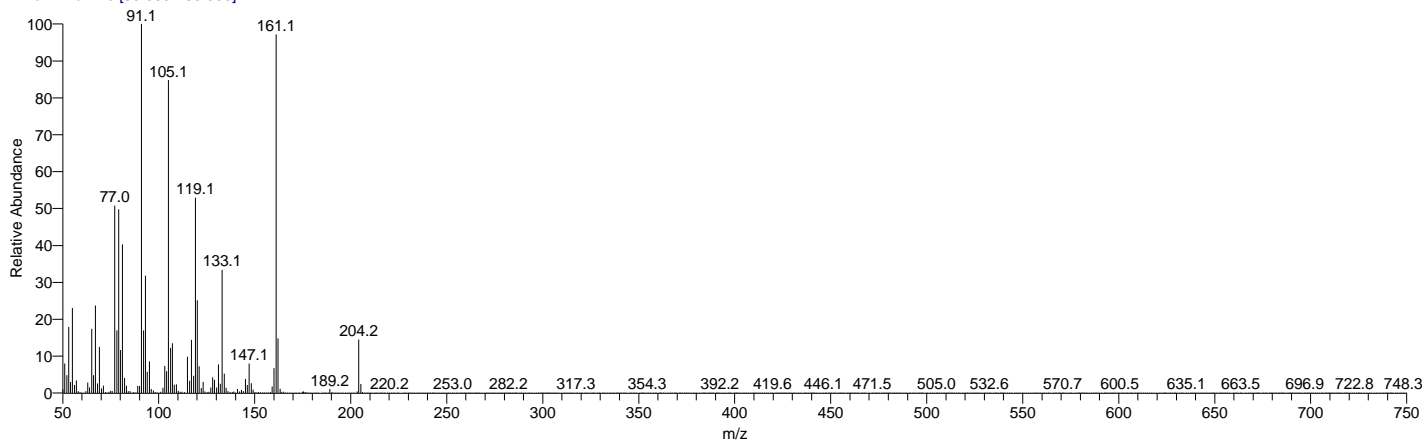
Formula C₁₅H₂₄, MW 204, CAS# 4630-07-3, Entry# 89318
3-ISOPROPENYL-4A,5-DIMETHYL-1,2,3,4,4A,5,6,7-OCTAHYDRONAPHTHALENE #



CYCLOHEXENE, 4-(1,5-DIMETHYL-1,4-HEXADIENYL)-1-METHYL-
Formula C₁₅H₂₄, MW 204, CAS# 17627-44-0, Entry# 89572
4-[(1E)-1,5-DIMETHYL-1,4-HEXADIENYL]-1-METHYL-1-CYCLOHEXENE #



peppermint_oil #2378 RT: 11.97 AV: 1 NL: 1.35E7
T: + c EI Full ms [50.000-750.000]



RT	Compound Name	Area %	MF	Molecular Formula	Molecular Weight	Cas #	Library
11.97	1,6-CYCLODECA-DIENE, 1-METHYL-5-METHYLENE-8-(1-METHYLETHYL)-, [(E,E)]-	0.88	951	C ₁₅ H ₂₄	204	23986-7 4-5	WileyRegi stry8e

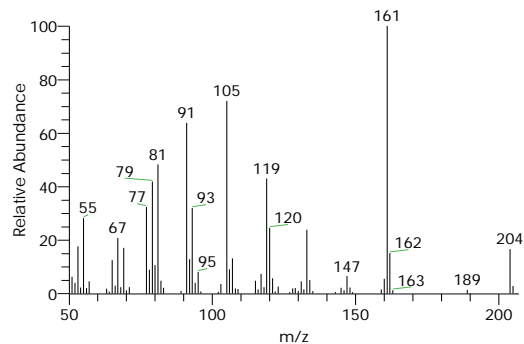
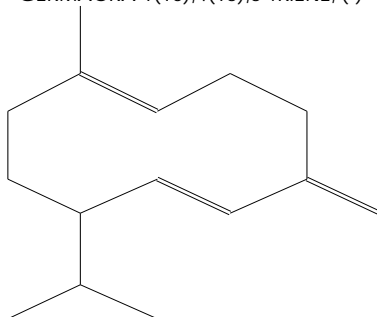
My GC-MS Report

RT	Compound Name	Area %	MF	Molecular Formula	Molecular Weight	Cas #	Library
11.97	1,6-CYCLODECADIENE, 1-METHYL-5-METHYLENE-8-(1-METHYLETHYL)-, [S-(E,E)]-	0.88	934	C15H24	204	23986-7 4-5	WileyRegi stry8e
11.97	Germacrene D	0.88	939	C15H24	204	23986-7 4-5	replib
11.97	Germacrene D	0.88	954	C15H24	204	23986-7 4-5	mainlib
11.97	1,6-CYCLODECADIENE, 1-METHYL-5-METHYLENE-8-(1-METHYLETHYL)-, [S-(E,E)]-	0.88	951	C15H24	204	23986-7 4-5	WileyRegi stry8e

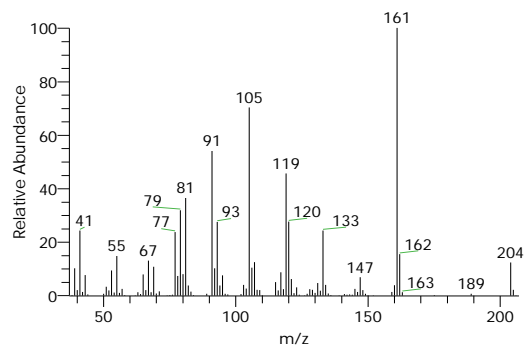
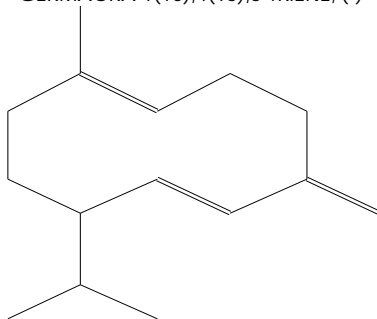
Compound Structure

Hit Spectrum

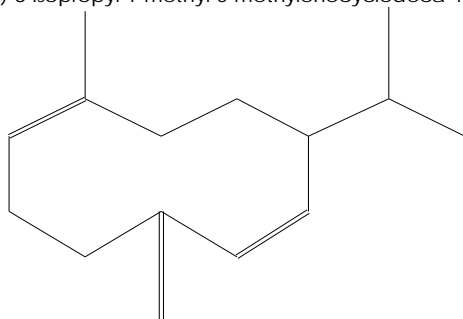
1,6-CYCLODECADIENE, 1-METHYL-5-METHYLENE-8-(1-METHYLETHYL)-, [S-(E,E)]-
Formula C15H24, MW 204, CAS# 23986-74-5, Entry# 89578
GERMACRA-1(10),4(15),5-TRIENE, (-)-



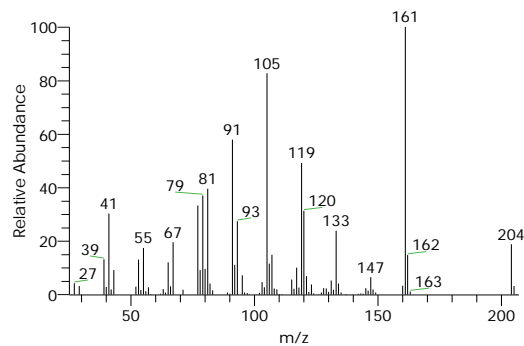
1,6-CYCLODECADIENE, 1-METHYL-5-METHYLENE-8-(1-METHYLETHYL)-, [S-(E,E)]-
Formula C15H24, MW 204, CAS# 23986-74-5, Entry# 89560
GERMACRA-1(10),4(15),5-TRIENE, (-)-



Germacrene D
Formula C15H24, MW 204, CAS# 23986-74-5, Entry# 24886
(S,1Z,6Z)-8-isopropyl-1-methyl-5-methylenecyclodeca-1,6-diene



SI 921, RSI 939, replib, Entry# 24886, CAS# 23986-74-5, Germacrene D



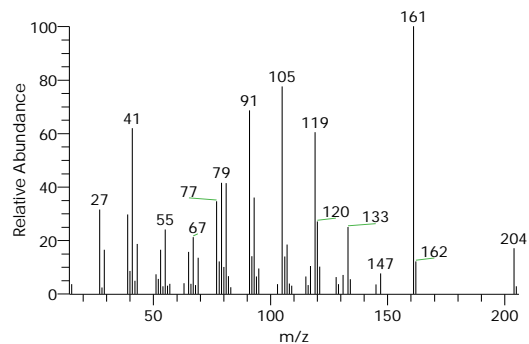
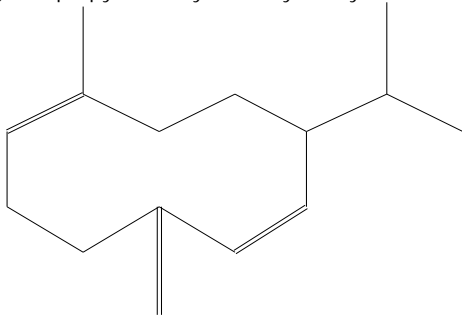
My GC-MS Report

Compound Structure

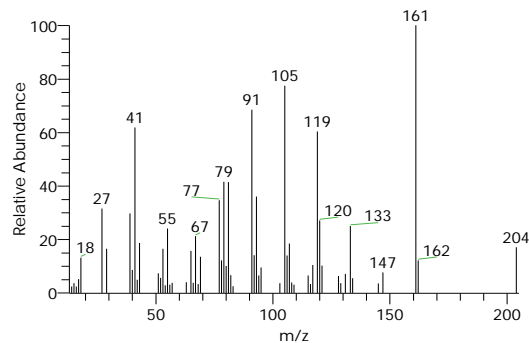
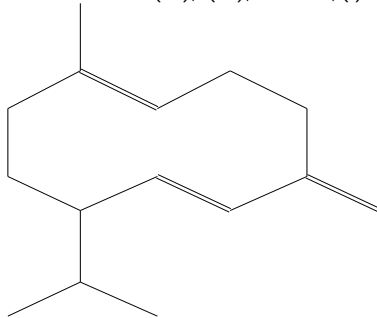
Hit Spectrum

Germacrene D

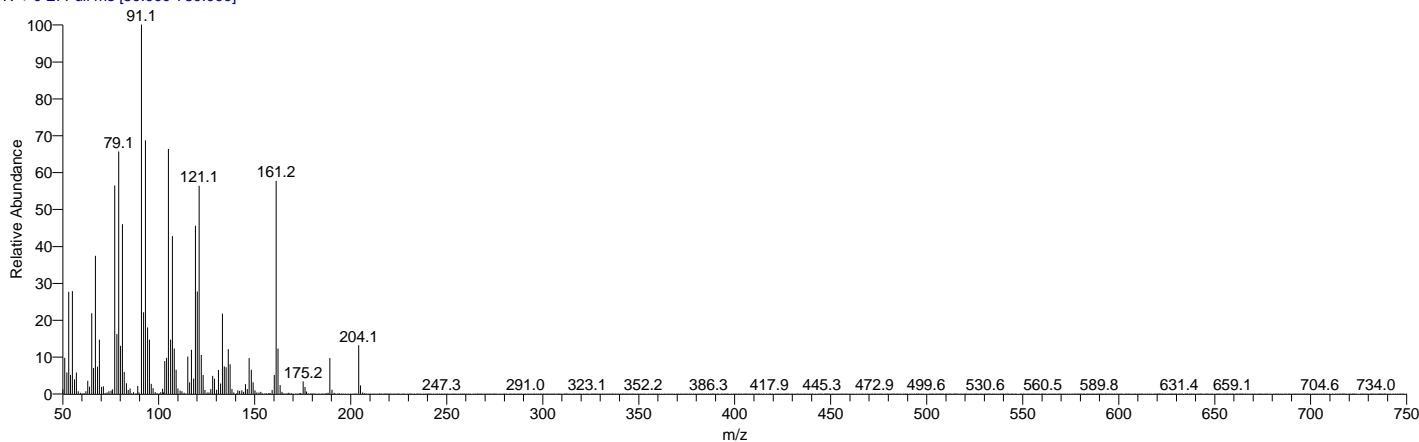
Formula C₁₅H₂₄, MW 204, CAS# 23986-74-5, Entry# 150487
(S,1Z,6Z)-8-Isopropyl-1-methyl-5-methylenecyclodeca-1,6-diene



1,6-CYCLODECADIENE, 1-METHYL-5-METHYLENE-8-(1-METHYLETHYL)-, [S-(E,E)]-
Formula C₁₅H₂₄, MW 204, CAS# 23986-74-5, Entry# 362375
GERMACRA-1(10),4(15),5-TRIENE, (-)-



peppermint_oil #2484 RT: 12.33 AV: 1 NL: 4.05E6
T: + c EI Full ms [50.000-750.000]



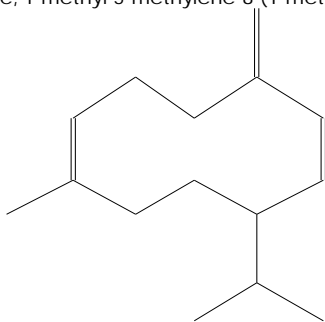
RT	Compound Name	Area %	MF	Molecular Formula	Molecular Weight	Cas #	Library
12.33	(S,1Z,6Z)-8-Isopropyl-1-methyl-5-methylenecyclodeca-1,6-diene	0.34	905	C ₁₅ H ₂₄	204	317819-80-0	mainlib
12.33	Alloaromadendrene	0.34	914	C ₁₅ H ₂₄	204	25246-27-9	replib
12.33	á-Longipinene	0.34	884	C ₁₅ H ₂₄	204	41432-70-6	mainlib
12.33	NAPHTHALENE, 1,2,4A,5,6,8A-HEXAHYDRO-4,7-DIMETHYL-1-(1-METHYLETHYL)-, (1à,4Aà,8Aà)-ç-Elemene	0.34	885	C ₁₅ H ₂₄	204	31983-22-9	WileyRegistry8e
12.33	ç-Elemene	0.34	895	C ₁₅ H ₂₄	204	29873-99-2	replib

My GC-MS Report

Compound Structure

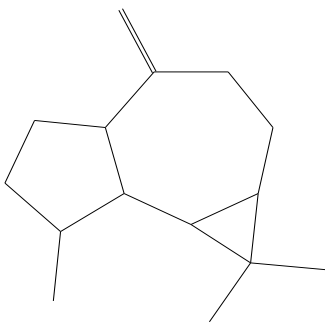
Hit Spectrum

(S,1Z,6Z)-8-Isopropyl-1-methyl-5-methylenecyclodeca-1,6-diene
Formula C₁₅H₂₄, MW 204, CAS# 317819-80-0, Entry# 150394
1,6-Cyclodecadiene, 1-methyl-5-methylene-8-(1-methylethyl)-, (1Z,6Z,8S)-



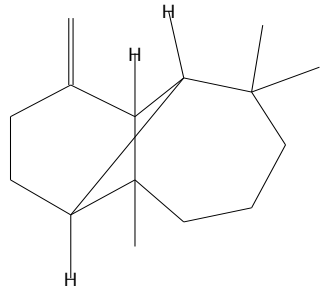
Alloaromadendrene

Formula C₁₅H₂₄, MW 204, CAS# 25246-27-9, Entry# 1320

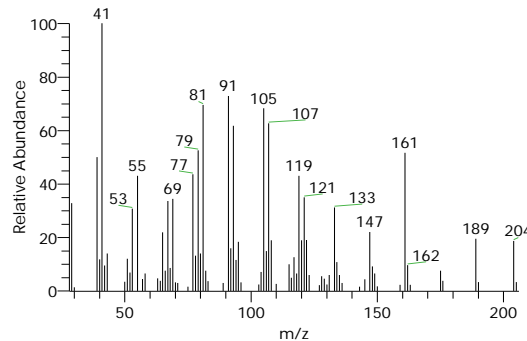
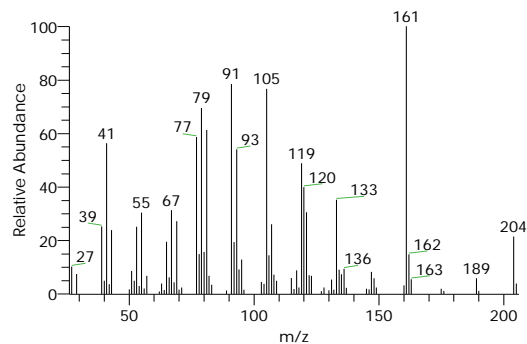
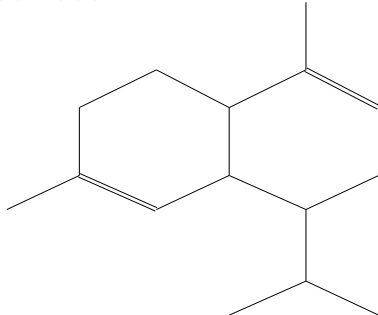


α-Longipinene

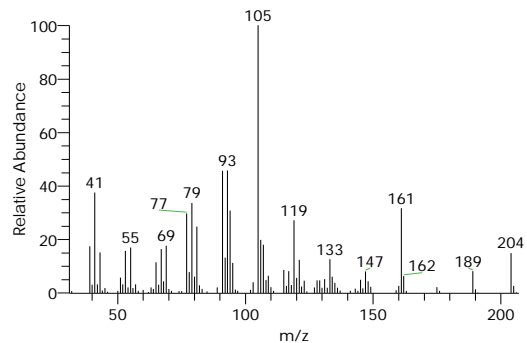
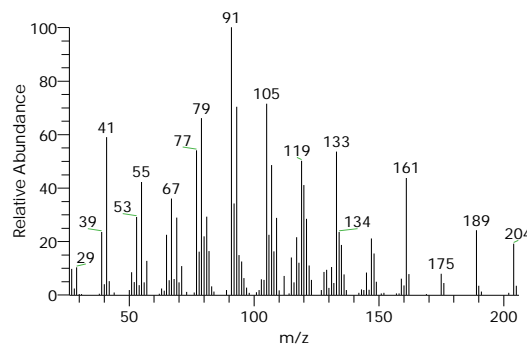
Formula C₁₅H₂₄, MW 204, CAS# 41432-70-6, Entry# 60945
(1S,2R,7S,8S)-2,6,6-Trimethyl-9-methylenetricyclo[5.4.0.0^{2,8}]undecane



NAPHTHALENE, 1,2,4A,5,6,8A-HEXAHYDRO-4,7-DIMETHYL-1-(1-METHYLETHYL)-, (1à,4Aà,8Aà)-
Formula C₁₅H₂₄, MW 204, CAS# 31983-22-9, Entry# 89349
NAPHTHALENE, 1,2,4Aà,5,6,8Aà-HEXAHYDRO-1à-ISOPROPYL-4,7-DIMETHYL-



SI 875, RSI 884, mainlib, Entry# 60945, CAS# 41432-70-6, α-Longipinene



My GC-MS Report

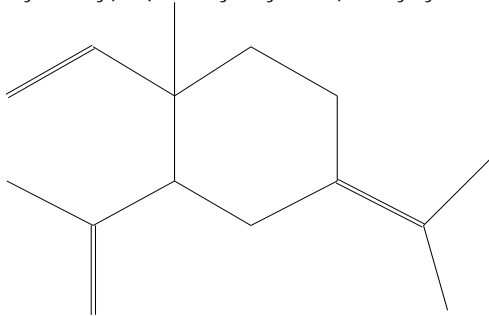
Compound Structure

Hit Spectrum

ç-Elemene

Formula C₁₅H₂₄, MW 204, CAS# 29873-99-2, Entry# 1378

1-Methyl-2-(1-methylethenyl)-4-(1-methylethylidene)-1-vinylcyclohexane, (1R-trans)-



SI 873, RSI 895, replib, Entry# 1378, CAS# 29873-99-2, ç-Elemene

