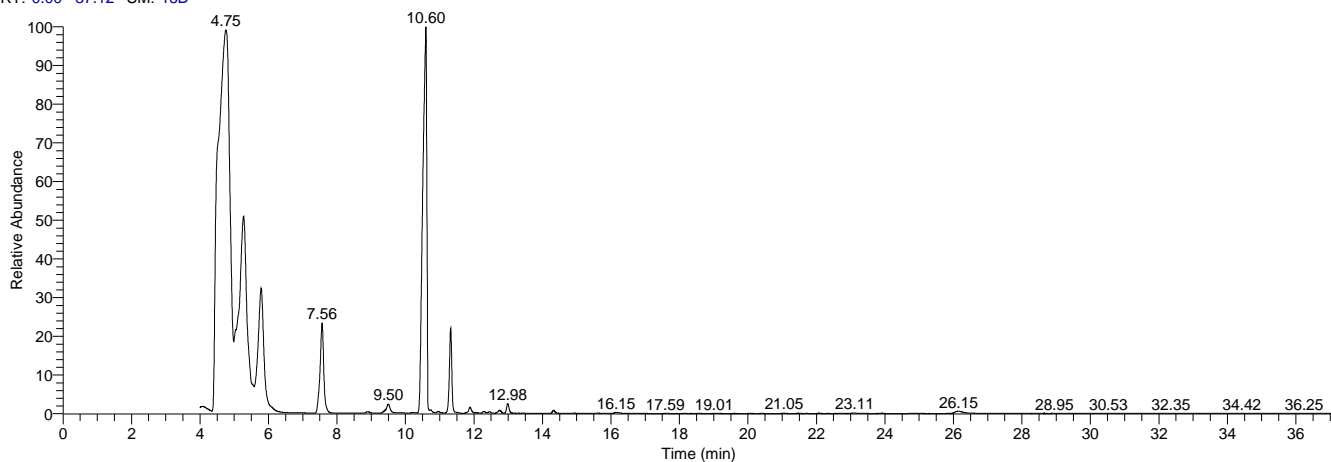


My GC-MS Report

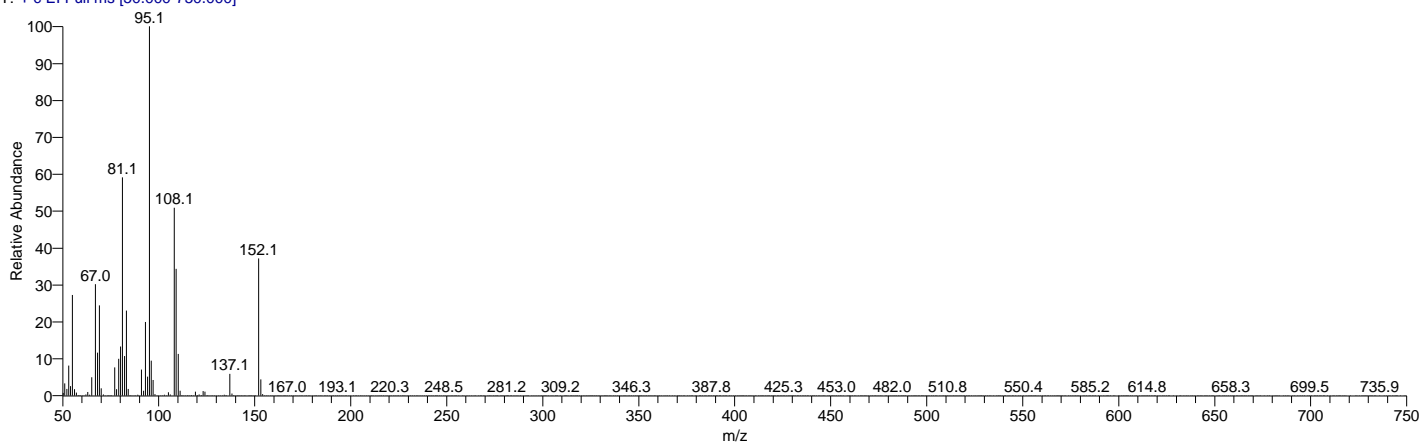
RT: 0.00 - 37.12 SM: 15B



NL:
1.47E9
TIC MS
Rosemary_
Oil

RT	Area %	Peak Area	Peak Height
4.74	56.43	25013820264.90	1129121917.45
5.02	0.12	55129962.68	21722588.01
5.27	7.16	3173657422.95	395266522.26
5.79	5.40	2395131674.20	321059292.84
7.57	3.69	1637296673.38	301132213.64
9.50	0.34	149689467.29	27714656.04
10.60	23.00	10192565723.37	1411154462.06
11.32	3.20	1418669492.20	344647332.02
11.88	0.26	115987575.21	23356318.14
12.98	0.39	171609677.11	39798533.75

Rosemary_Oil #221 RT: 4.74 AV: 1 NL: 2.67E8
T: + c EI Full ms [50.000-750.000]



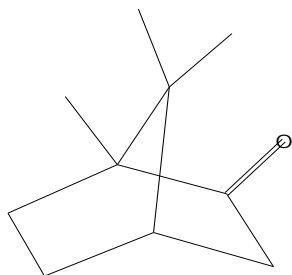
RT	Compound Name	Area %	MF	Molecular Formula	Molecular Weight	Cas #	Library
4.74	(+)-2-Bornanone	56.43	940	C10H16O	152	464-49-3	replib
4.74	BICYCLO[2.2.1]HEPTAN-2-ONE, 1,7,7-TRIMETHYL-	56.43	942	C10H16O	152	76-22-2	WileyRegistry8e
4.74	(+)-2-Bornanone	56.43	937	C10H16O	152	464-49-3	replib
4.74	Bicyclo[2.2.1]heptan-2-one, 1,7,7-trimethyl-, (1S)-	56.43	944	C10H16O	152	464-48-2	mainlib
4.74	BICYCLO[2.2.1]HEPTAN-2-ONE, 1,7,7-TRIMETHYL-	56.43	934	C10H16O	152	76-22-2	WileyRegistry8e

My GC-MS Report

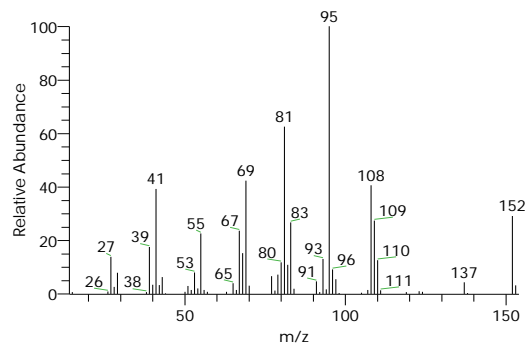
Compound Structure

Hit Spectrum

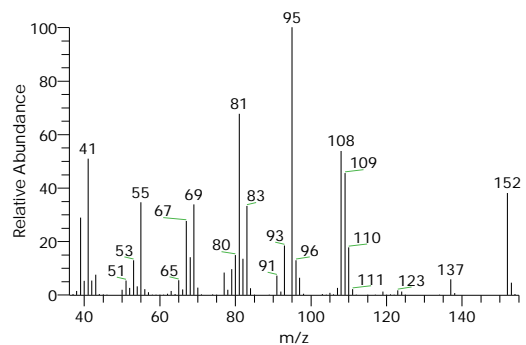
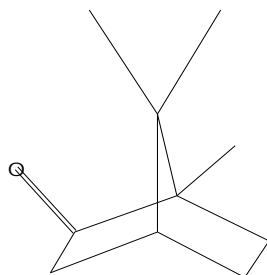
(+)-2-Bornanone
Formula C₁₀H₁₆O, MW 152, CAS# 464-49-3, Entry# 14551
Bicyclo[2.2.1]heptan-2-one, 1,7,7-trimethyl-, (1R)-



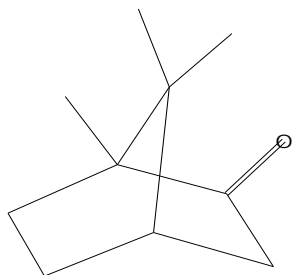
SI 939, RSI 940, replib, Entry# 14551, CAS# 464-49-3, (+)-2-Bornanone



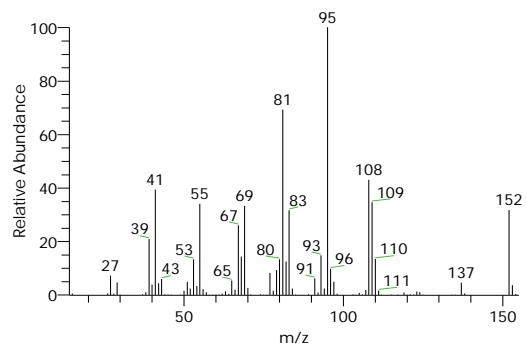
BICYCLO[2.2.1]HEPTAN-2-ONE, 1,7,7-TRIMETHYL-
Formula C₁₀H₁₆O, MW 152, CAS# 76-22-2, Entry# 36210
NORBORNAN-2-ONE



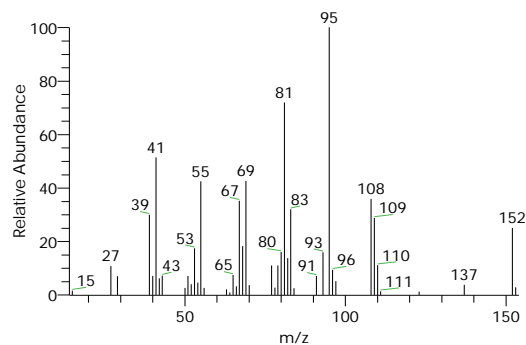
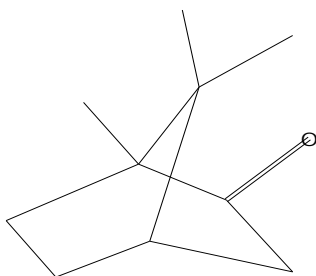
(+)-2-Bornanone
Formula C₁₀H₁₆O, MW 152, CAS# 464-49-3, Entry# 14554
Bicyclo[2.2.1]heptan-2-one, 1,7,7-trimethyl-, (1R)-



SI 937, RSI 937, replib, Entry# 14554, CAS# 464-49-3, (+)-2-Bornanone



Bicyclo[2.2.1]heptan-2-one, 1,7,7-trimethyl-, (1S)-
Formula C₁₀H₁₆O, MW 152, CAS# 464-48-2, Entry# 68159
(-)-Alcanfor

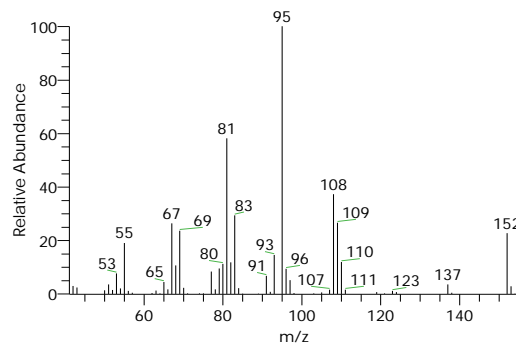
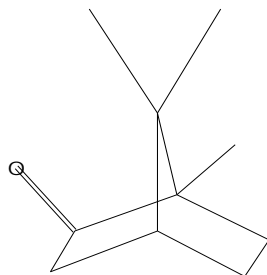


My GC-MS Report

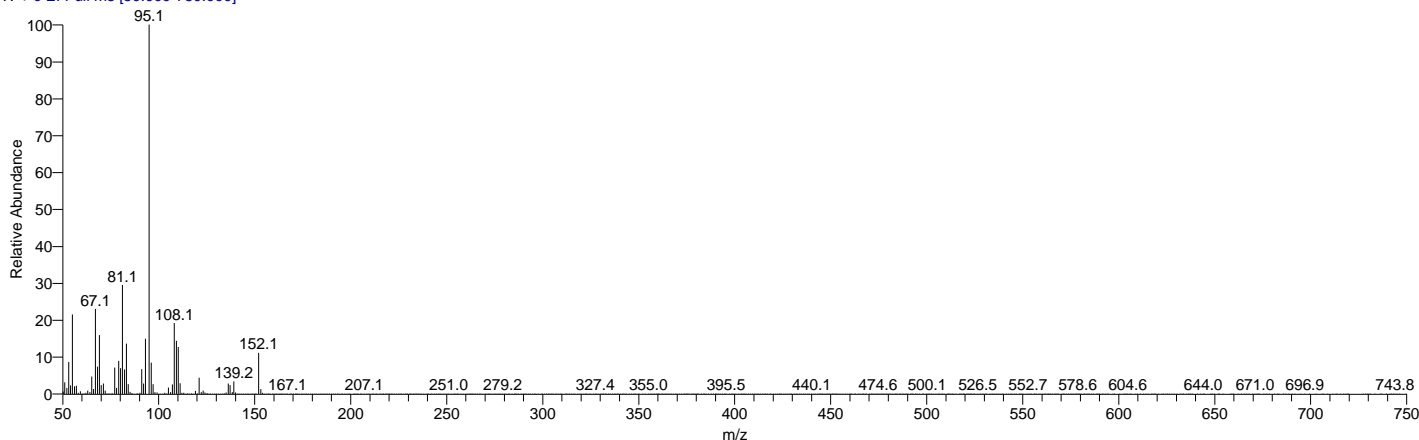
Compound Structure

Hit Spectrum

BICYCLO[2.2.1]HEPTAN-2-ONE, 1,7,7-TRIMETHYL-
Formula C₁₀H₁₆O, MW 152, CAS# 76-22-2, Entry# 394883
NORBORNAN-2-ONE



Rosemary_Oil #306 RT: 5.02 AV: 1 NL: 7.88E7
T: + c EI Full ms [50.000-750.000]

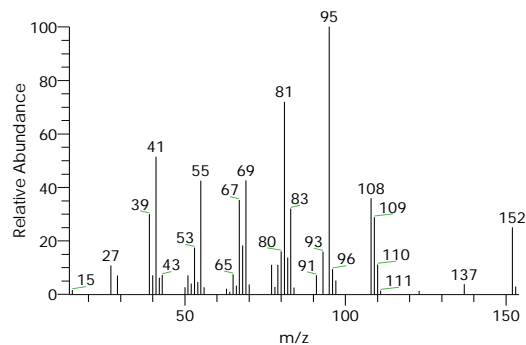
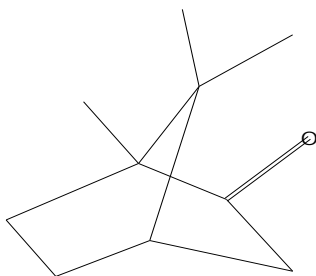


RT	Compound Name	Area %	MF	Molecular Formula	Molecular Weight	Cas #	Library
5.02	Bicyclo[2.2.1]heptan-2-one, 1,7,7-trimethyl-, (1S)-	0.12	919	C ₁₀ H ₁₆ O	152	464-48-2	mainlib
5.02	Camphor	0.12	862	C ₁₀ H ₁₆ O	152	76-22-2	replib
5.02	1,7,7-TRIMETHYL-BICYCLO[2.2.1]HEPTAN-2-ONE	0.12	862	C ₁₀ H ₁₆ O	152	NA	WileyRegi stry8e
5.02	BICYCLO[2.2.1]HEPTAN-2-ONE, 1,7,7-TRIMETHYL-	0.12	868	C ₁₀ H ₁₆ O	152	76-22-2	WileyRegi stry8e
5.02	Camphor	0.12	863	C ₁₀ H ₁₆ O	152	76-22-2	replib

Compound Structure

Hit Spectrum

Bicyclo[2.2.1]heptan-2-one, 1,7,7-trimethyl-, (1S)-
Formula C₁₀H₁₆O, MW 152, CAS# 464-48-2, Entry# 68159
(-)-Alcanfor



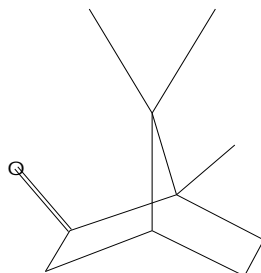
My GC-MS Report

Compound Structure

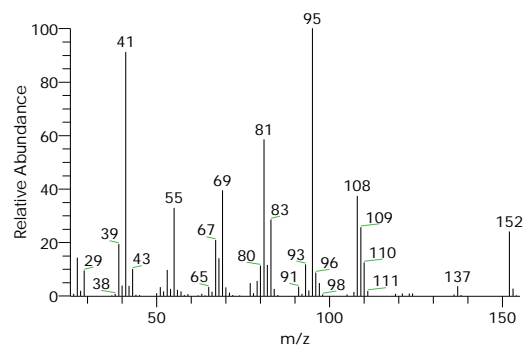
Hit Spectrum

Camphor

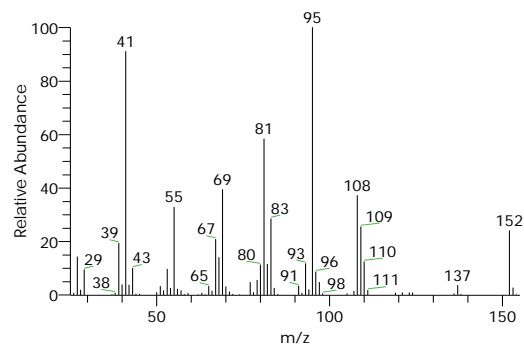
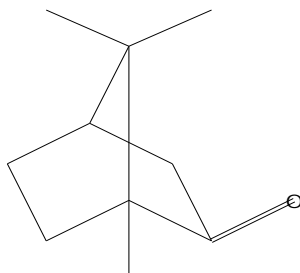
Formula C₁₀H₁₆O, MW 152, CAS# 76-22-2, Entry# 14454
Bicyclo[2.2.1]heptan-2-one, 1,7,7-trimethyl-



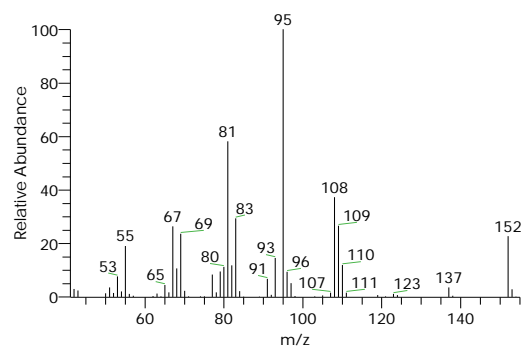
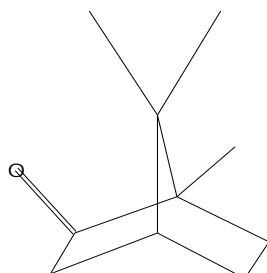
SI 850, RSI 862, replib, Entry# 14454, CAS# 76-22-2, Camphor



1,7,7-TRIMETHYL-BICYCLO[2.2.1]HEPTAN-2-ONE
Formula C₁₀H₁₆O, MW 152, CAS# NA, Entry# 371259
1,7,7-TRIMETHYLBICYCLO[2.2.1]HEPTAN-2-ONE

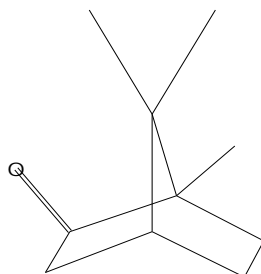


BICYCLO[2.2.1]HEPTAN-2-ONE, 1,7,7-TRIMETHYL-
Formula C₁₀H₁₆O, MW 152, CAS# 76-22-2, Entry# 394883
NORBORNAN-2-ONE

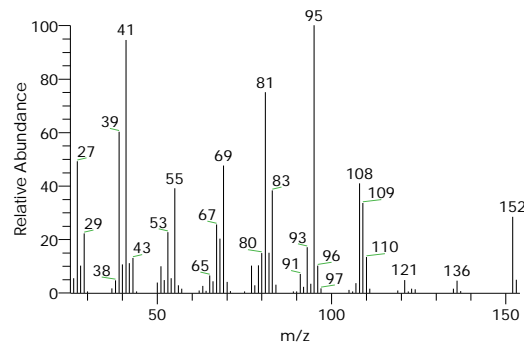


Camphor

Formula C₁₀H₁₆O, MW 152, CAS# 76-22-2, Entry# 14453
Bicyclo[2.2.1]heptan-2-one, 1,7,7-trimethyl-

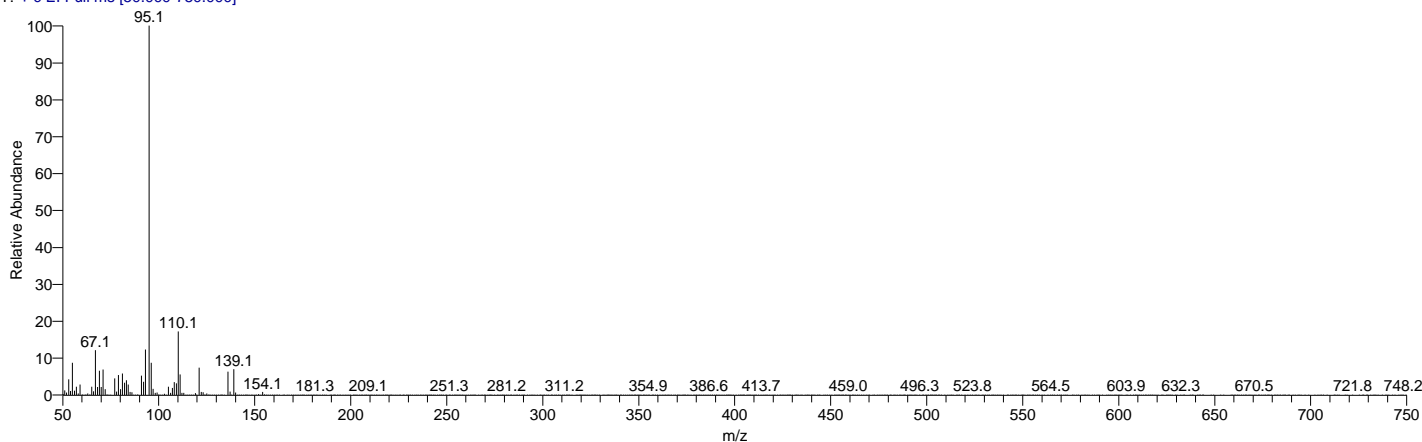


SI 849, RSI 863, replib, Entry# 14453, CAS# 76-22-2, Camphor



My GC-MS Report

Rosemary_Oil #381 RT: 5.27 AV: 1 NL: 2.69E8
T: + c EI Full ms [50.000-750.000]

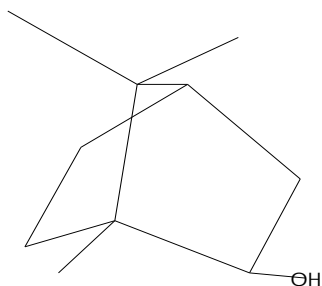


RT	Compound Name	Area %	MF	Molecular Formula	Molecular Weight	Cas #	Library
5.27	Isorneol	7.16	935	C10H18O	154	124-76-5	replib
5.27	endo-Borneol	7.16	933	C10H18O	154	507-70-0	replib
5.27	endo-Borneol	7.16	931	C10H18O	154	507-70-0	mainlib
5.27	BICYCLO[2.2.1]HEPTAN-2-OL, 1,7,7-TRIMETHYL-, (1S-ENDO)-	7.16	926	C10H18O	154	464-45-9	WileyRegi stry8e
5.27	Bicyclo[2.2.1]heptan-2-ol, 1,7,7-trimethyl-, (1S-endo)-	7.16	928	C10H18O	154	464-45-9	replib

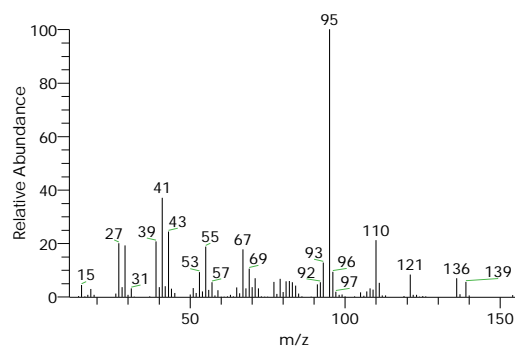
Compound Structure

Hit Spectrum

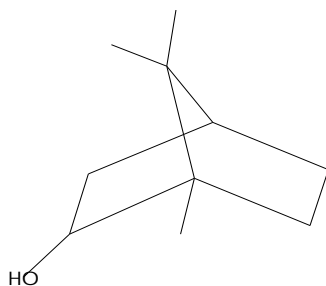
Isorneol
Formula C10H18O, MW 154, CAS# 124-76-5, Entry# 14437
Bicyclo[2.2.1]heptan-2-ol, 1,7,7-trimethyl-, exo-



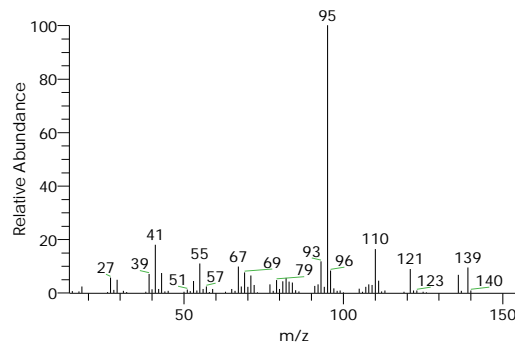
SI 935, RSI 935, replib, Entry# 14437, CAS# 124-76-5, Isorneol



endo-Borneol
Formula C10H18O, MW 154, CAS# 507-70-0, Entry# 14458
endo-2-Hydroxy-1,7,7-trimethylbornane



SI 931, RSI 933, replib, Entry# 14458, CAS# 507-70-0, endo-Borneol

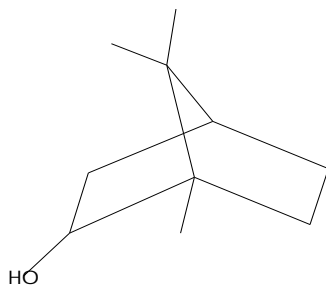


My GC-MS Report

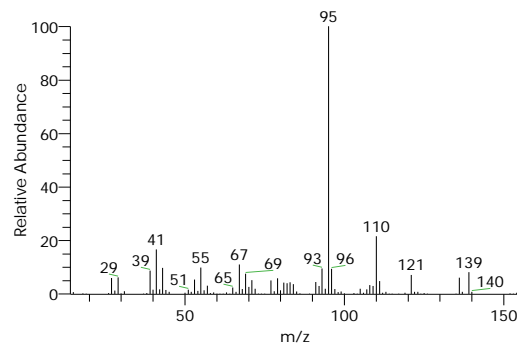
Compound Structure

Hit Spectrum

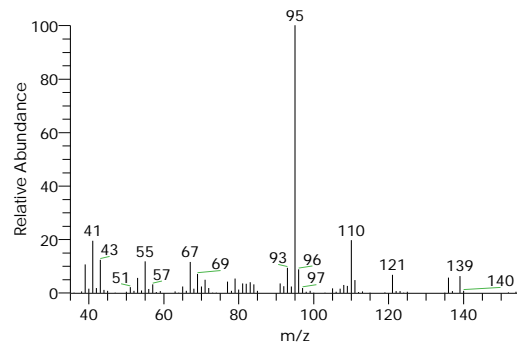
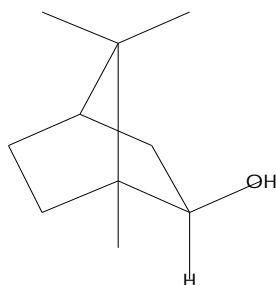
endo-Borneol
Formula C₁₀H₁₈O, MW 154, CAS# 507-70-0, Entry# 68442
endo-2-Hydroxy-1,7,7-trimethylnorbornane



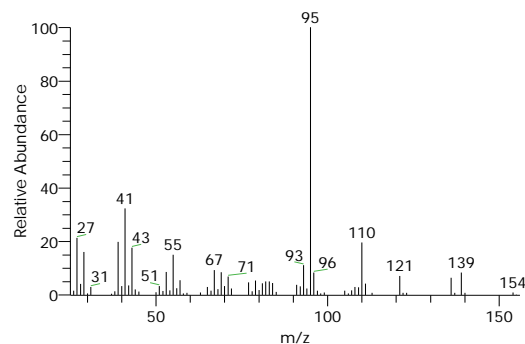
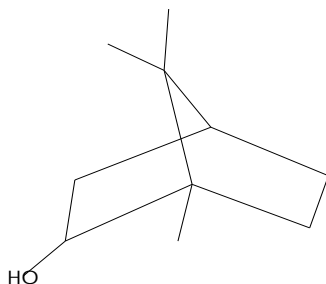
SI 931, RSI 931, mainlib, Entry# 68442, CAS# 507-70-0, endo-Borneol



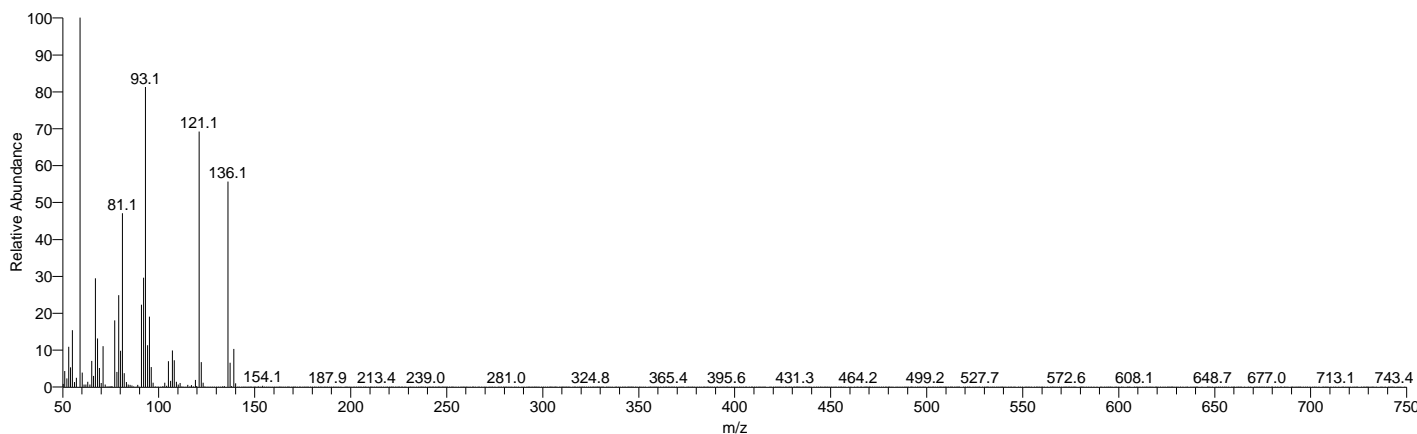
BICYCLO[2.2.1]HEPTAN-2-OL, 1,7,7-TRIMETHYL-, (1S-ENDO)-
Formula C₁₀H₁₈O, MW 154, CAS# 464-45-9, Entry# 38741
1,7,7-TRIMETHYLBICYCLO[2.2.1]HEPTAN-2-OL #



Bicyclo[2.2.1]heptan-2-ol, 1,7,7-trimethyl-, (1S-endo)-
Formula C₁₀H₁₈O, MW 154, CAS# 464-45-9, Entry# 14433
Borneol, (1S,2R,4S)-(-)-



Rosemary_Oil #534 RT: 5.79 AV: 1 NL: 7.17E7
T: + c EI Full ms [50.000-750.000]



RT	Compound Name	Area %	MF	Molecular Formula	Molecular Weight	Cas #	Library
5.79	(-)-(1S,2R,4R)-BETA-FENCHOL	5.40	937	C ₁₀ H ₁₈ O	154	470-08	WileyRegi
5.79	3-CYCLOHEXENE-1-METHANOL, à,à,4-TRIMETHYL-	5.40	927	C ₁₀ H ₁₈ O	154	98-55-5	stry8e

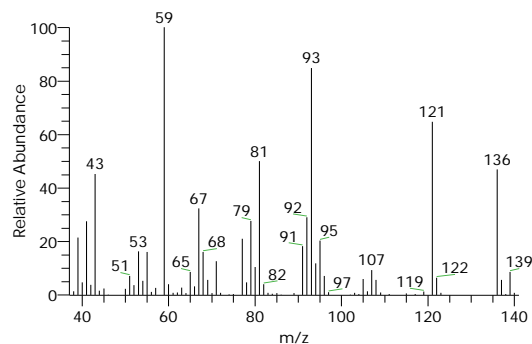
My GC-MS Report

RT	Compound Name	Area %	MF	Molecular Formula	Molecular Weight	Cas #	Library
5.79	3-CYCLOHEXENE-1-METHANOL	5.40	926	C10H18O	154	98-55-5	WileyRegi stry8e
5.79	, à,à,4-TRIMETHYL- 3-CYCLOHEXENE-1-METHANOL	5.40	928	C10H18O	154	10482-5 6-1	WileyRegi stry8e
5.79	1,6-OCTADIEN-3-OL, 3,7-DIMETHYL-, PROPANOATE	5.40	931	C13H22O2	210	144-39 -8	WileyRegi stry8e

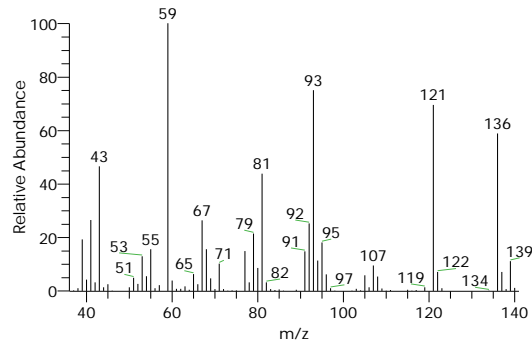
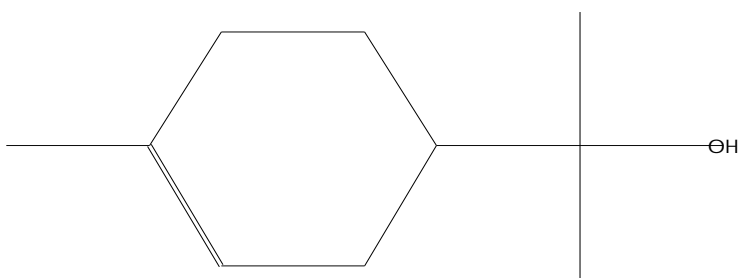
Compound Structure

Hit Spectrum

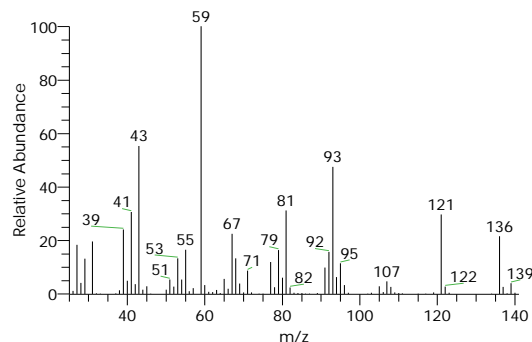
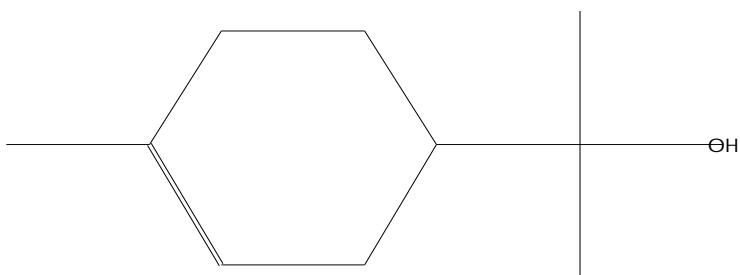
(-)-(1S,2R,4R)-BETA-FENCHOL
Formula C10H18O, MW 154, CAS# 470-08-6, Entry# 38737
(-)-BETA-FENCHOL



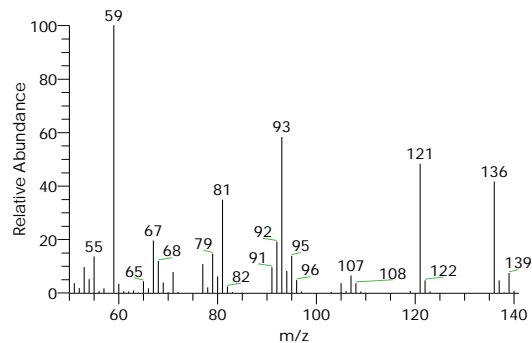
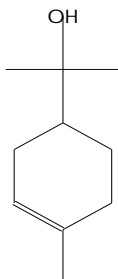
3-CYCLOHEXENE-1-METHANOL, à,à,4-TRIMETHYL-
Formula C10H18O, MW 154, CAS# 98-55-5, Entry# 38742
3-CYCLOHEXENE-1-METHANOL, à,à,4-TRIMETHYL-, (S)-



3-CYCLOHEXENE-1-METHANOL, à,à,4-TRIMETHYL-
Formula C10H18O, MW 154, CAS# 98-55-5, Entry# 38365
3-CYCLOHEXENE-1-METHANOL, à,à,4-TRIMETHYL-, (S)-



3-CYCLOHEXENE-1-METHANOL, à,à,4-TRIMETHYL-, (S)-
Formula C10H18O, MW 154, CAS# 10482-56-1, Entry# 38380
2-(4-METHYL-3-CYCLOHEXEN-1-YL)-2-PROPANOL #

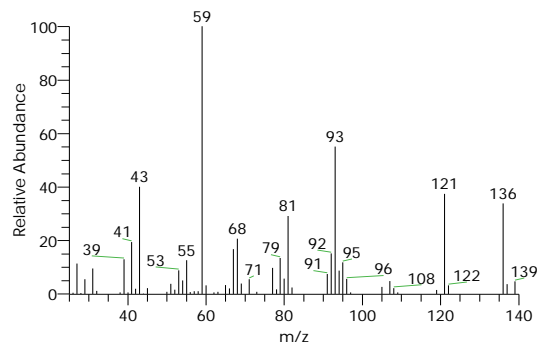
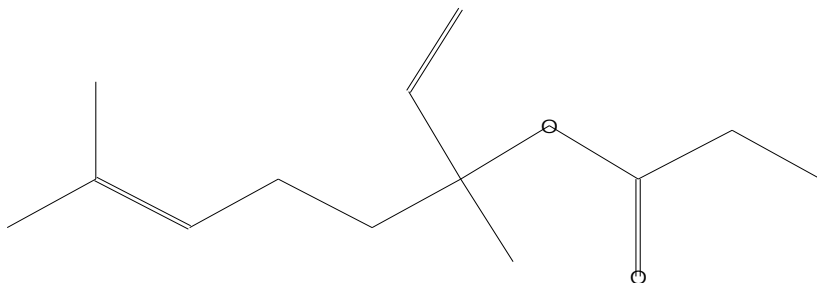


My GC-MS Report

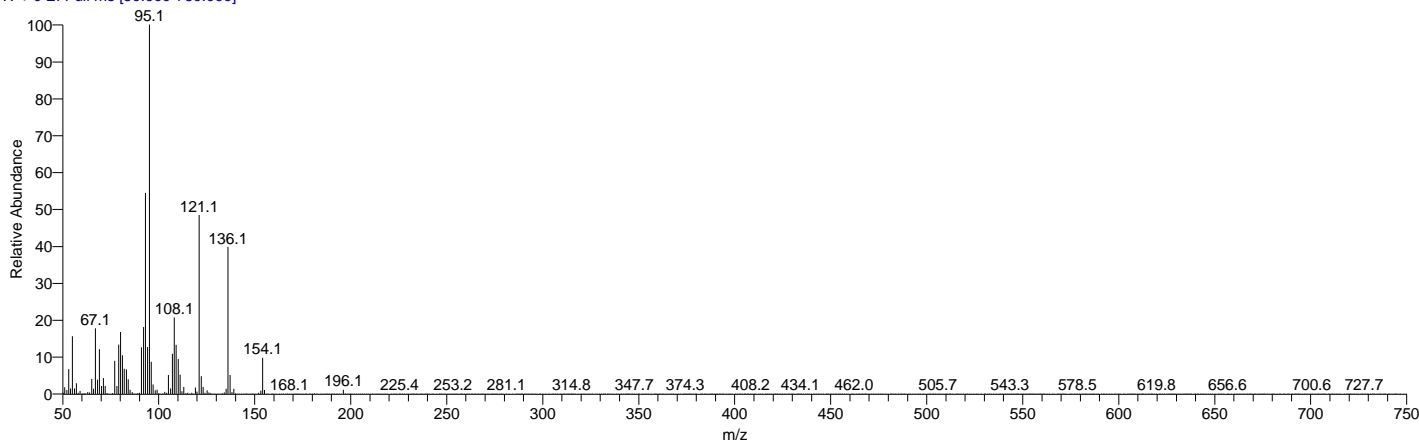
Compound Structure

Hit Spectrum

1,6-OCTADIEN-3-OL, 3,7-DIMETHYL-, PROPANOATE
Formula C₁₃H₂₂O₂, MW 210, CAS# 144-39-8, Entry# 96030
1,5-DIMETHYL-1-VINYL-4-HEXENYL PROPIONATE #



Rosemary_Oil #1064 RT: 7.57 AV: 1 NL: 6.70E7
T: + c EI Full ms [50.000-750.000]

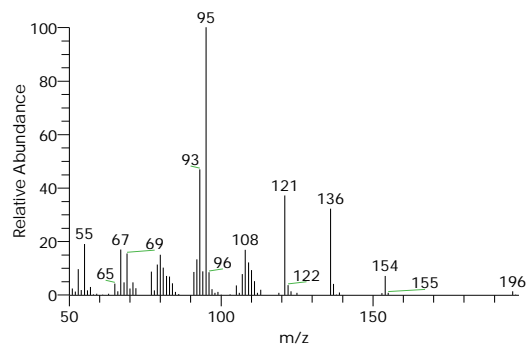
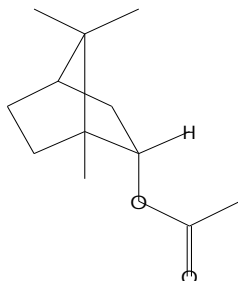


RT	Compound Name	Area %	MF	Molecular Formula	Molecular Weight	Cas #	Library
7.57	BICYCLO[2.2.1]HEPTAN-2-OL, 1,7,7-TRIMETHYL-, ACETATE, (1S-ENDO)-	3.69	953	C ₁₂ H ₂₀ O ₂	196	5655-6 1-8	WileyRegi stry8e
7.57	BICYCLO[2.2.1]HEPTAN-2-OL, 1,7,7-TRIMETHYL-, ACETATE, ENDO-	3.69	945	C ₁₂ H ₂₀ O ₂	196	76-49-3	WileyRegi stry8e
7.57	Bornyl acetate	3.69	943	C ₁₂ H ₂₀ O ₂	196	76-49-3	mainlib
7.57	Bicyclo[2.2.1]heptan-2-ol, 1,7,7-trimethyl-, acetate, (1S-endo)-	3.69	938	C ₁₂ H ₂₀ O ₂	196	5655-6 1-8	mainlib
7.57	BICYCLO[2.2.1]HEPTAN-2-OL, 1,7,7-TRIMETHYL-, ACETATE, EXO-	3.69	936	C ₁₂ H ₂₀ O ₂	196	125-12 -2	WileyRegi stry8e

Compound Structure

Hit Spectrum

BICYCLO[2.2.1]HEPTAN-2-OL, 1,7,7-TRIMETHYL-, ACETATE, (1S-ENDO)-
Formula C₁₂H₂₀O₂, MW 196, CAS# 5655-61-8, Entry# 80072
1,7,7-TRIMETHYLBICYCLO[2.2.1]HEPT-2-YL ACETATE #

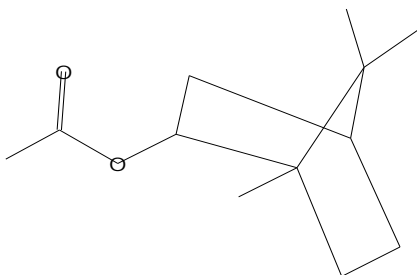


My GC-MS Report

Compound Structure

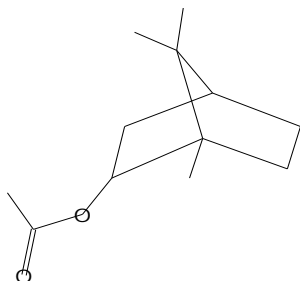
Hit Spectrum

BICYCLO[2.2.1]HEPTAN-2-OL, 1,7,7-TRIMETHYL-, ACETATE, ENDO-
Formula C₁₂H₂₀O₂, MW 196, CAS# 76-49-3, Entry# 80076
1,7,7-TRIMETHYLBICYCLO[2.2.1]HEPT-2-YL ACETATE #

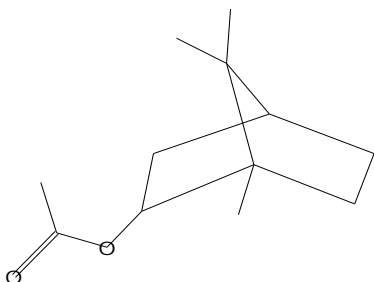


Bornyl acetate

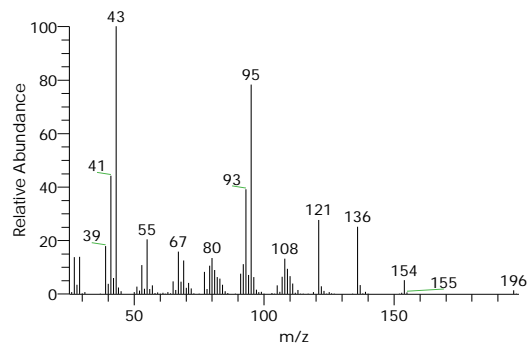
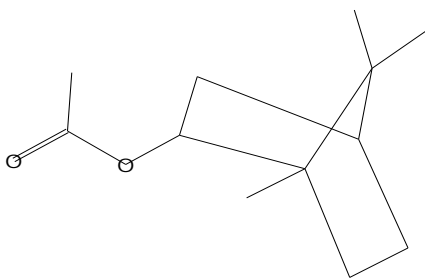
Formula C₁₂H₂₀O₂, MW 196, CAS# 76-49-3, Entry# 67808
Bicyclo[2.2.1]heptan-2-ol, 1,7,7-trimethyl-, acetate, endo-



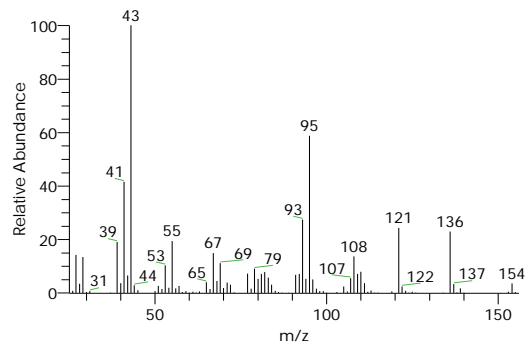
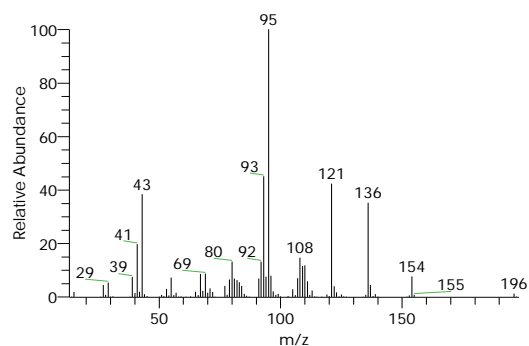
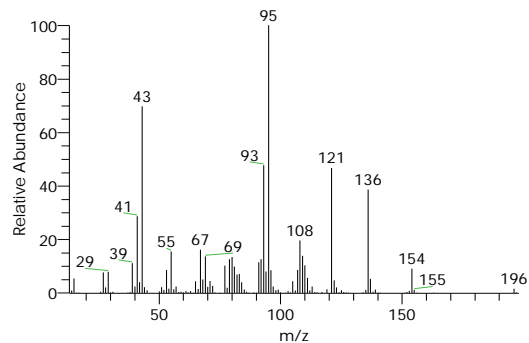
Bicyclo[2.2.1]heptan-2-ol, 1,7,7-trimethyl-, acetate, (1S-endo)-
Formula C₁₂H₂₀O₂, MW 196, CAS# 5655-61-8, Entry# 68273
Borneol, acetate, (1S,2R,4S)-(-)-



BICYCLO[2.2.1]HEPTAN-2-OL, 1,7,7-TRIMETHYL-, ACETATE, EXO-
Formula C₁₂H₂₀O₂, MW 196, CAS# 125-12-2, Entry# 80091
1,7,7-TRIMETHYLBICYCLO[2.2.1]HEPT-2-YL ACETATE #

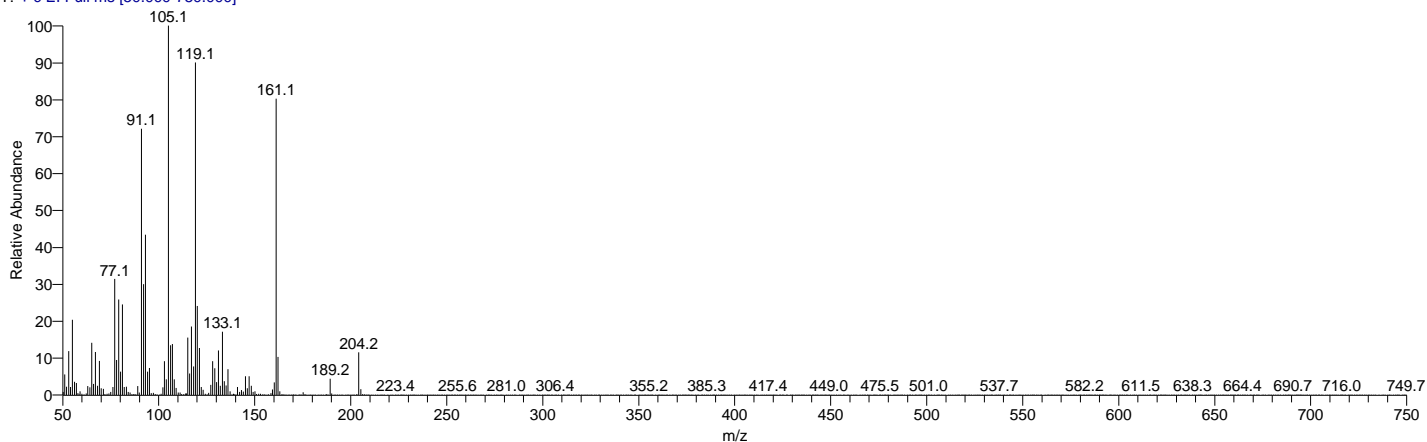


SI 942, RSI 943, mainlib, Entry# 67808, CAS# 76-49-3, Bornyl acetate



My GC-MS Report

Rosemary_Oil #1641 RT: 9.50 AV: 1 NL: 4.35E6
T: + c EI Full ms [50.000-750.000]

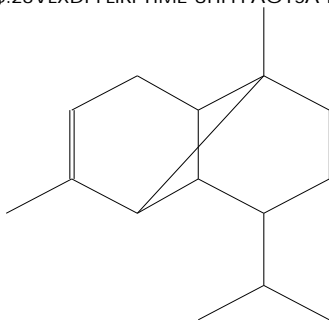


RT	Compound Name	Area %	MF	Molecular Formula	Molecular Weight	Cas #	Library
9.50	.alfa.-Copaene	0.34	928	C15H24	204	NA	mainlib
9.50	TRICYCLO[4.4.0.0(2,7)]DEC-3-EN E, 1,3-DIMETHYL-8-(1-METHYLET HYL)-, ST	0.34	941	C15H24	204	3856-2 5-5	WileyRegi stry8e
9.50	TRICYCLO[4.4.0.0(2,7)]DEC-3-EN E, 1,3-DIMETHYL-8-(1-METHYLET HYL)-, ST	0.34	913	C15H24	204	3856-2 5-5	WileyRegi stry8e
9.50	Copaene	0.34	911	C15H24	204	3856-2 5-5	replib
9.50	TRICYCLO[4.4.0.0(2,7)]DEC-3-EN E, 1,3-DIMETHYL-8-(1-METHYLET HYL)-, ST	0.34	909	C15H24	204	3856-2 5-5	WileyRegi stry8e

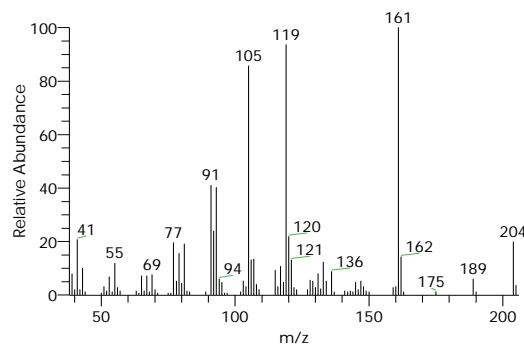
Compound Structure

Hit Spectrum

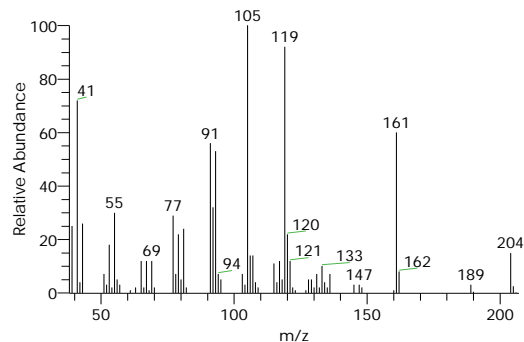
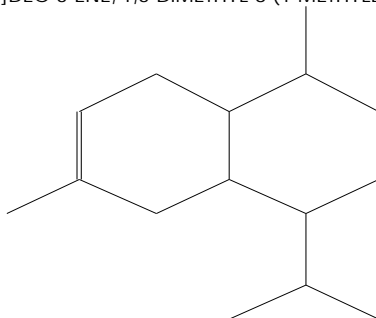
.alfa.-Copaene
Formula C15H24, MW 204, CAS# NA, Entry# 150578
\$:28VLXDPFLIRFYIME-UHFFFAOYSA-N



SI 921, RSI 928, mainlib, Entry# 150578, CAS# NA, .alfa.-Copaene



TRICYCLO[4.4.0.0(2,7)]DEC-3-ENE, 1,3-DIMETHYL-8-(1-METHYLETHYL)-, ST
Formula C15H24, MW 204, CAS# 3856-25-5, Entry# 89462
TRICYCLO[4.4.0.0(2,7)]DEC-3-ENE, 1,3-DIMETHYL-8-(1-METHYLETHYL)-, STEREOISOMER

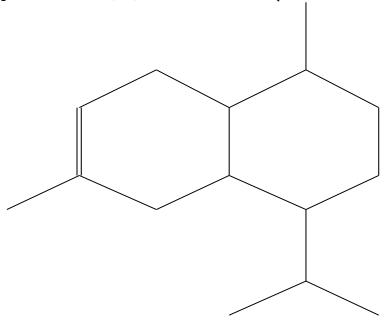


My GC-MS Report

Compound Structure

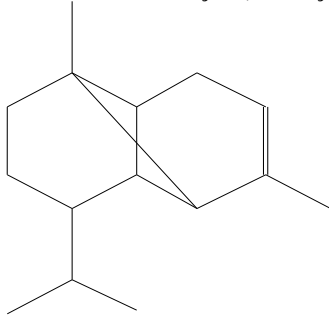
Hit Spectrum

TRICYCLO[4.4.0.0(2,7)]DEC-3-ENE, 1,3-DIMETHYL-8-(1-METHYLETHYL)-, ST
 Formula C₁₅H₂₄, MW 204, CAS# 3856-25-5, Entry# 89460
 TRICYCLO[4.4.0.0(2,7)]DEC-3-ENE, 1,3-DIMETHYL-8-(1-METHYLETHYL)-, STEREOISOMER

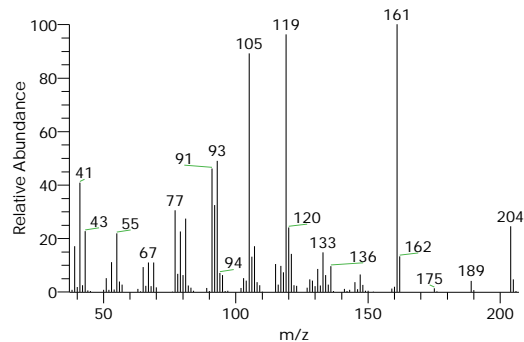
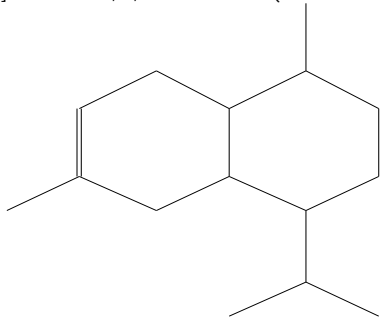


Copaene

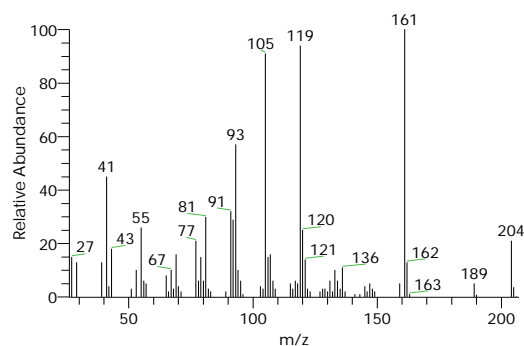
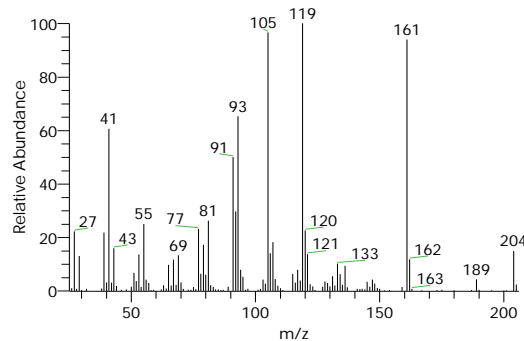
Formula C₁₅H₂₄, MW 204, CAS# 3856-25-5, Entry# 18672
 Tricyclo[4.4.0.02,7]dec-3-ene, 1,3-dimethyl-8-(1-methylethyl)-, stereoisomer



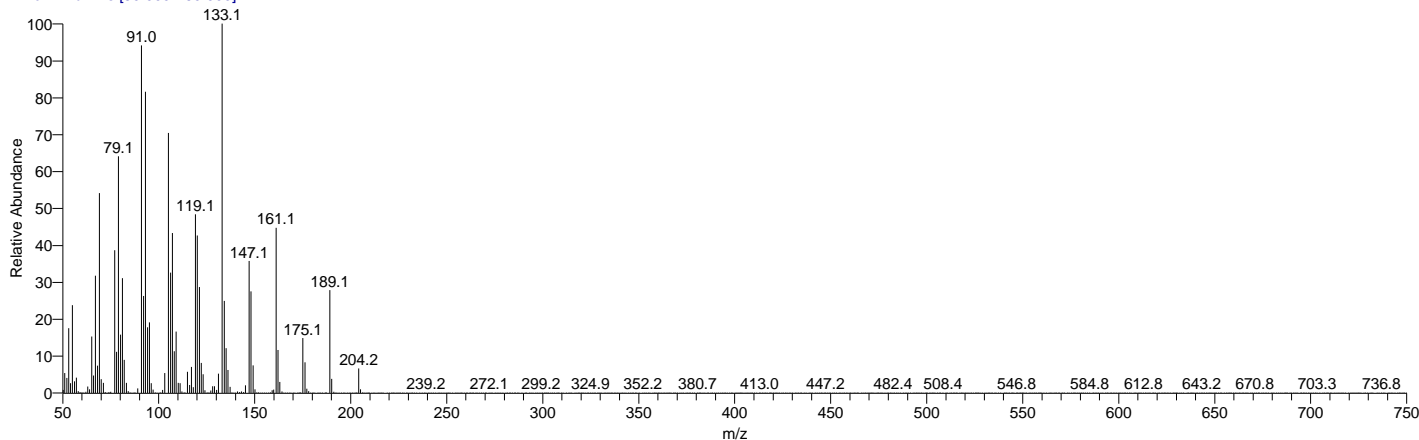
TRICYCLO[4.4.0.0(2,7)]DEC-3-ENE, 1,3-DIMETHYL-8-(1-METHYLETHYL)-, ST
 Formula C₁₅H₂₄, MW 204, CAS# 3856-25-5, Entry# 89461
 TRICYCLO[4.4.0.0(2,7)]DEC-3-ENE, 1,3-DIMETHYL-8-(1-METHYLETHYL)-, STEREOISOMER



SI 905, RSI 911, replib, Entry# 18672, CAS# 3856-25-5, Copaene



Rosemary_Oil #1970 RT: 10.60 AV: 1 NL: 1.17E8
 T: + c EI Full ms [50.000-750.000]



RT	Compound Name	Area %	MF	Molecular Formula	Molecular Weight	Cas #	Library
10.60	Caryophyllene	23.00	947	C ₁₅ H ₂₄	204	87-44-5	mainlib
10.60	BICYCLO[7.2.0]UNDEC-4-ENE, 4,11,11-TRIMETHYL-8-METHYLE NE-, [1R-(1R*,4E,9S*)]-	23.00	942	C ₁₅ H ₂₄	204	87-44-5	WileyRegi stry8e

My GC-MS Report

RT	Compound Name	Area %	MF	Molecular Formula	Molecular Weight	Cas #	Library
10.60	TRANS(α)-CARYOPHYLLENE	23.00	932	C15H24	204	NA	WileyRegistry8e
10.60	BICYCLO[7.2.0]UNDEC-4-ENE, 4,11,11-TRIMETHYL-8-METHYLENE-, [1R-(1R*,4E,9S*)]-	23.00	932	C15H24	204	87-44-5	WileyRegistry8e
10.60	BICYCLO[7.2.0]UNDEC-4-ENE, 4,11,11-TRIMETHYL-8-METHYLENE-, [1R-(1R*,4E,9S*)]-	23.00	923	C15H24	204	87-44-5	WileyRegistry8e

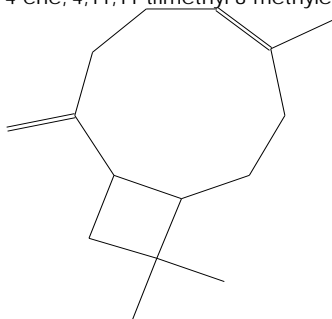
Compound Structure

Hit Spectrum

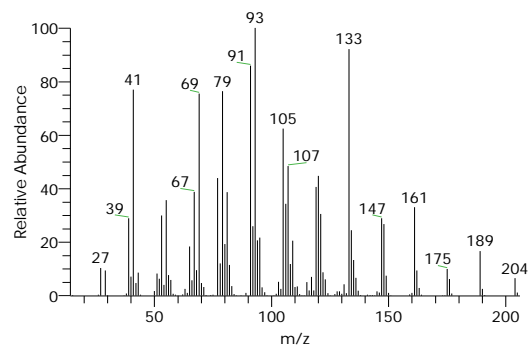
Caryophyllene

Formula C15H24, MW 204, CAS# 87-44-5, Entry# 66572

Bicyclo[7.2.0]undec-4-ene, 4,11,11-trimethyl-8-methylene-, [1R-(1R*,4E,9S*)]-



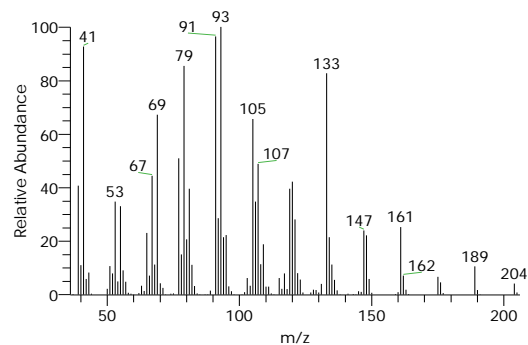
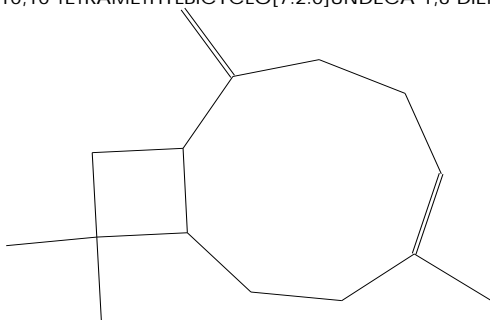
SI 947, RSI 947, mainlib, Entry# 66572, CAS# 87-44-5, Caryophyllene



BICYCLO[7.2.0]UNDEC-4-ENE, 4,11,11-TRIMETHYL-8-METHYLENE-, [1R-(1R*,4E,9S*)]-

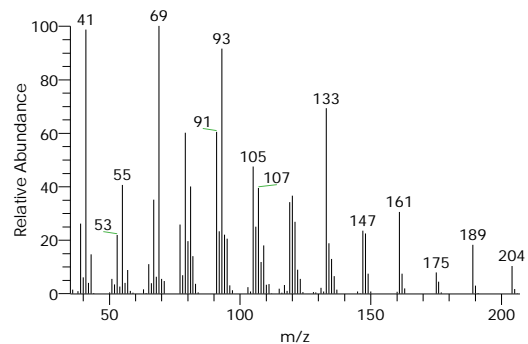
Formula C15H24, MW 204, CAS# 87-44-5, Entry# 89162

2,6,10,10-TETRAMETHYLBICYCLO[7.2.0]UNDECA-1,6-DIENE #



TRANS(α)-CARYOPHYLLENE

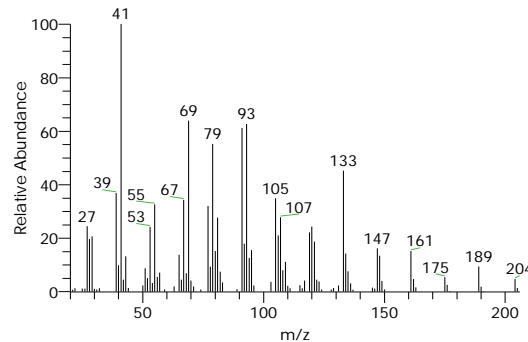
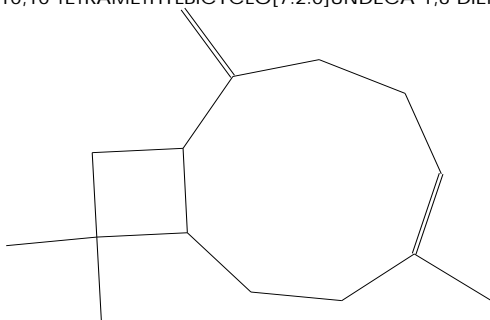
Formula C15H24, MW 204, CAS# NA, Entry# 89641



BICYCLO[7.2.0]UNDEC-4-ENE, 4,11,11-TRIMETHYL-8-METHYLENE-, [1R-(1R*,4E,9S*)]-

Formula C15H24, MW 204, CAS# 87-44-5, Entry# 89170

2,6,10,10-TETRAMETHYLBICYCLO[7.2.0]UNDECA-1,6-DIENE #

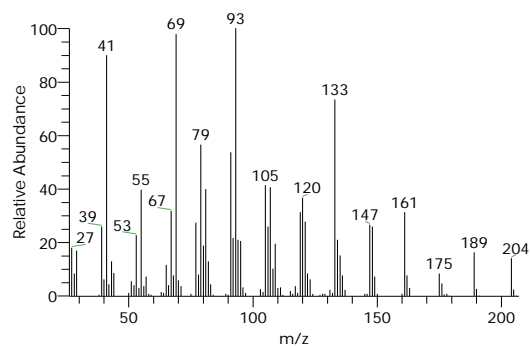
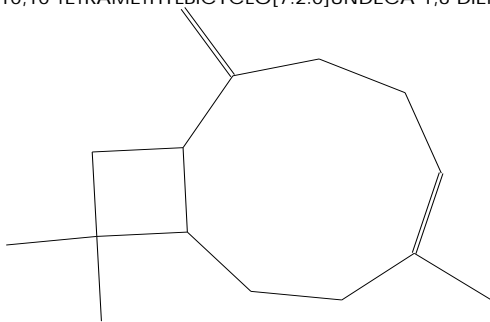


My GC-MS Report

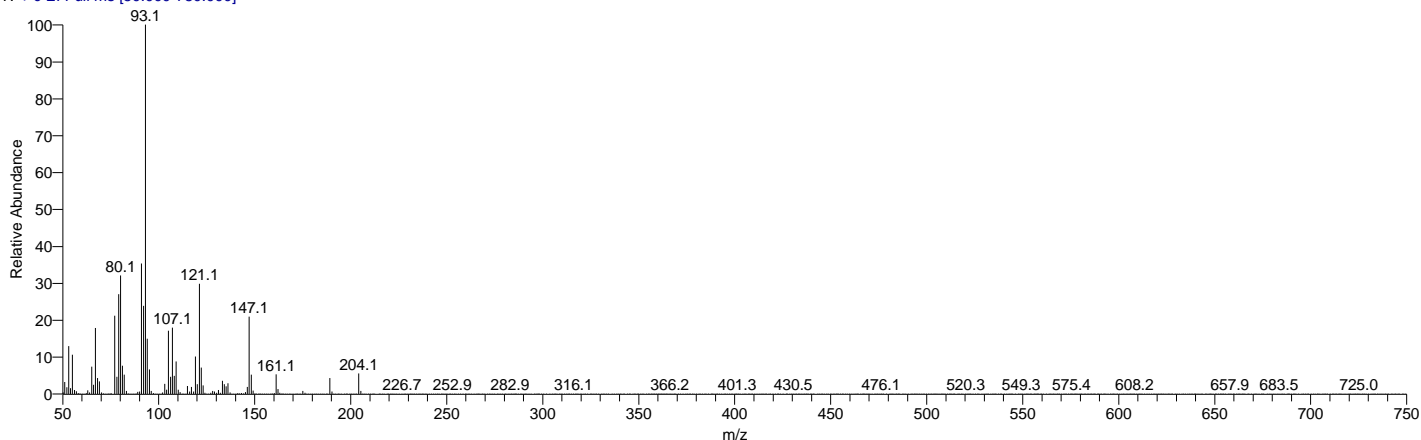
Compound Structure

Hit Spectrum

BICYCLO[7.2.0]UNDEC-4-ENE, 4,11,11-TRIMETHYL-8-METHYLENE-, [1R-(1R*,4E,9S*)]-
 Formula C₁₅H₂₄, MW 204, CAS# 87-44-5, Entry# 89160
 2,6,10,10-TETRAMETHYLBICYCLO[7.2.0]UNDECA-1,6-DIENE #



Rosemary_Oil #2184 RT: 11.32 AV: 1 NL: 7.18E7
 T: + c EI Full ms [50.000-750.000]

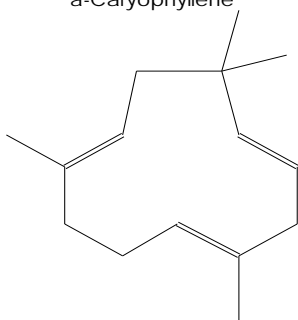


RT	Compound Name	Area %	MF	Molecular Formula	Molecular Weight	Cas #	Library
11.32	Humulene	3.20	947	C ₁₅ H ₂₄	204	6753-9	replib
11.32	1,4,8-CYCLOUNDECATRIENE, 2,6,6,9-TETRAMETHYL-, (E,E,E)-	3.20	924	C ₁₅ H ₂₄	204	6753-9	WileyRegi
11.32	1,4,8-CYCLOUNDECATRIENE, 2,6,6,9-TETRAMETHYL-, (E,E,E)-	3.20	916	C ₁₅ H ₂₄	204	6753-9	WileyRegi
11.32	Humulene	3.20	919	C ₁₅ H ₂₄	204	6753-9	replib
11.32	1,4,8-CYCLOUNDECATRIENE, 2,6,6,9-TETRAMETHYL-, (E,E,E)-	3.20	908	C ₁₅ H ₂₄	204	6753-9	WileyRegi

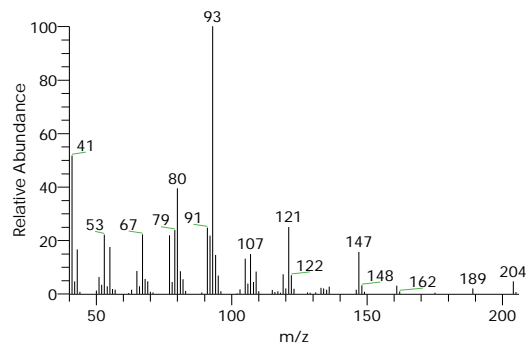
Compound Structure

Hit Spectrum

Humulene
 Formula C₁₅H₂₄, MW 204, CAS# 6753-98-6, Entry# 14003
 à-Caryophyllene



SI 940, RSI 947, replib, Entry# 14003, CAS# 6753-98-6, Humulene

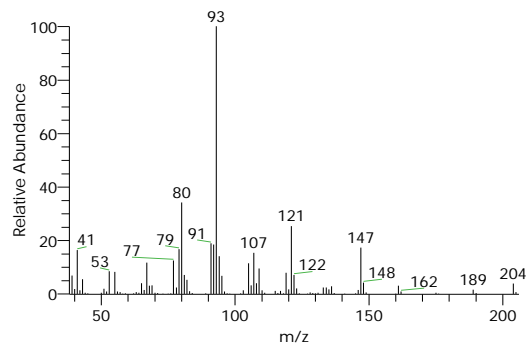
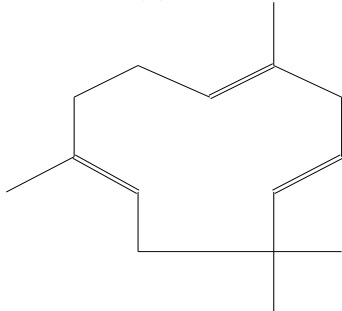


My GC-MS Report

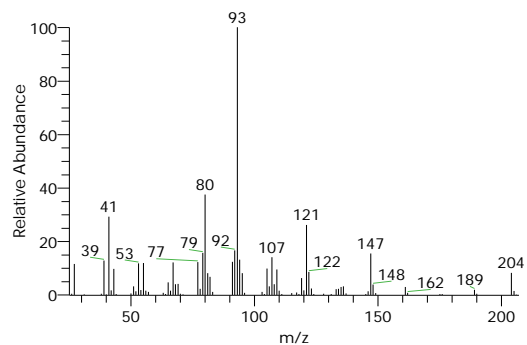
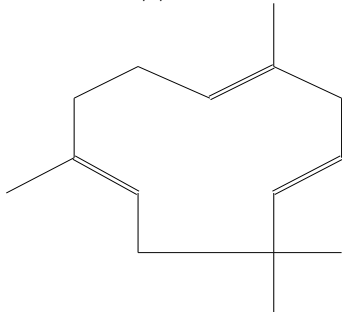
Compound Structure

Hit Spectrum

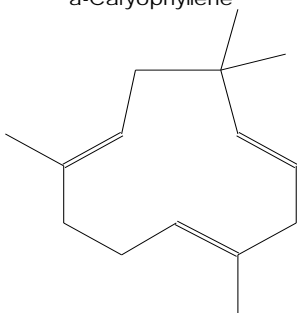
1,4,8-CYCLOUNDECATRIENE, 2,6,6,9-TETRAMETHYL-, (E,E,E)-
Formula C₁₅H₂₄, MW 204, CAS# 6753-98-6, Entry# 89108
2,6,6,9-TETRAMETHYL-1,4,8-CYCLOUNDECATRIENE #



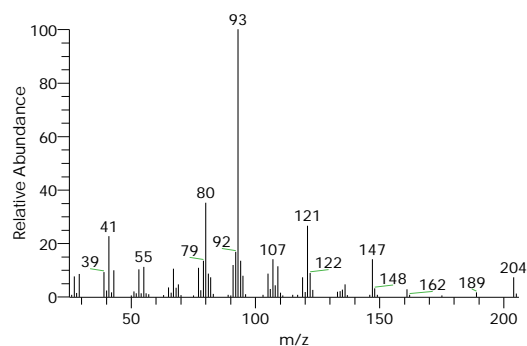
1,4,8-CYCLOUNDECATRIENE, 2,6,6,9-TETRAMETHYL-, (E,E,E)-
Formula C₁₅H₂₄, MW 204, CAS# 6753-98-6, Entry# 89110
2,6,6,9-TETRAMETHYL-1,4,8-CYCLOUNDECATRIENE #



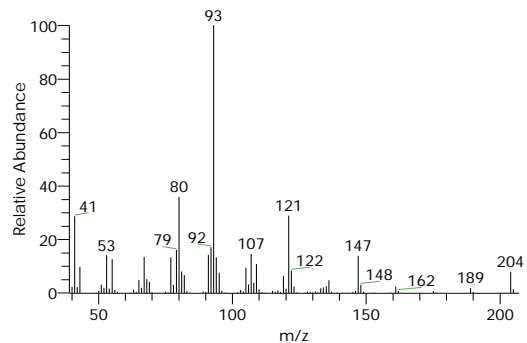
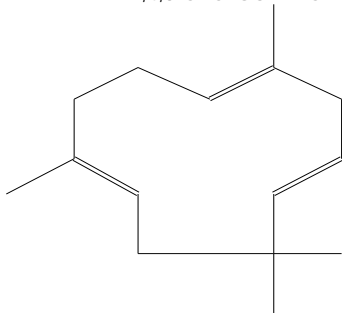
Humulene
Formula C₁₅H₂₄, MW 204, CAS# 6753-98-6, Entry# 14104
à-Caryophyllene



SI 909, RSI 919, replib, Entry# 14104, CAS# 6753-98-6, Humulene

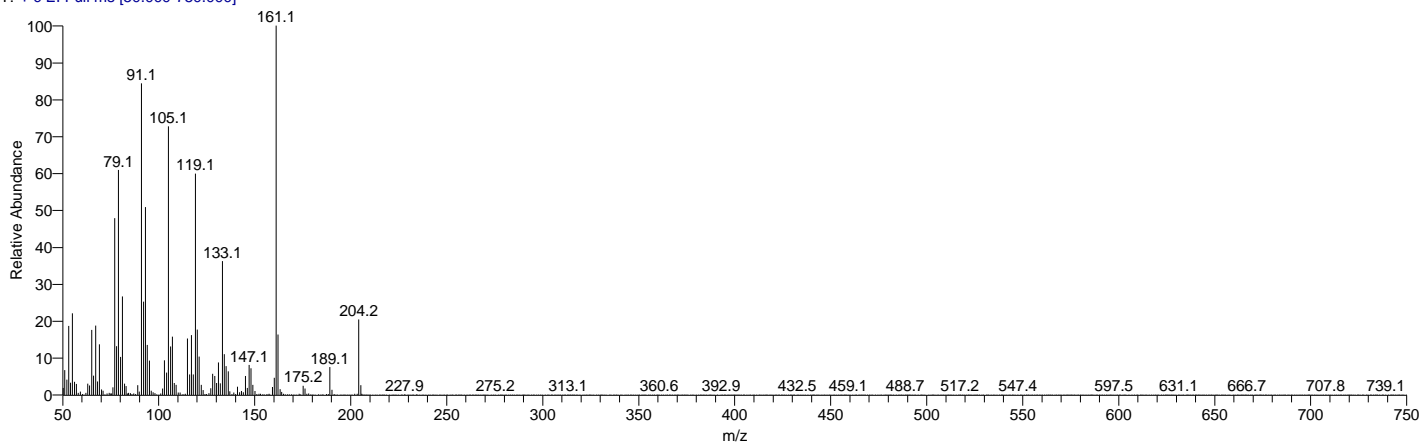


1,4,8-CYCLOUNDECATRIENE, 2,6,6,9-TETRAMETHYL-, (E,E,E)-
Formula C₁₅H₂₄, MW 204, CAS# 6753-98-6, Entry# 89113
2,6,6,9-TETRAMETHYL-1,4,8-CYCLOUNDECATRIENE #



My GC-MS Report

Rosemary_Oil #2351 RT: 11.88 AV: 1 NL: 2.80E6
T: + c EI Full ms [50.000-750.000]

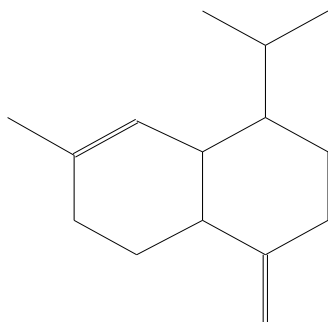


RT	Compound Name	Area %	MF	Molecular Formula	Molecular Weight	Cas #	Library
11.88	ç-Muurolene	0.26	945	C15H24	204	30021-7	replib
11.88	Naphthalene, 1,2,4a,5,6,8a-hexahydro-4,7-dimethyl- 1-1-(1-methylethyl)-	0.26	949	C15H24	204	483-75	replib
11.88	ç-Muurolene	0.26	926	C15H24	204	30021-7	replib
11.88	Naphthalene, 1,2,3,4,4a,5,6,8a-octahydro-7-methyl- -4-methylene-1-(1-methylethyl)- (1à,4aà,8aà)-	0.26	913	C15H24	204	39029-4	replib
11.88	(1S,4aR,8aS)-1-Isopropyl-7-methyl-4- -methylene-1,2,3,4,4a,5,6,8a-octahyd ronaphthalene	0.26	912	C15H24	204	6980-4	mainlib

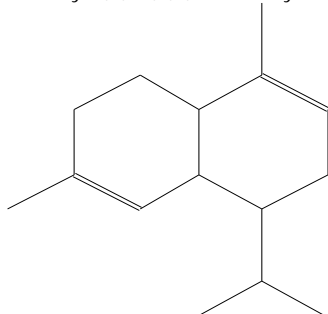
Compound Structure

Hit Spectrum

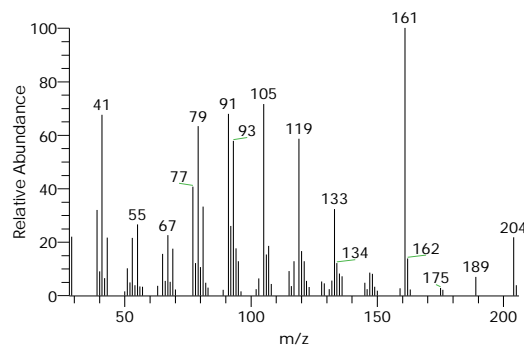
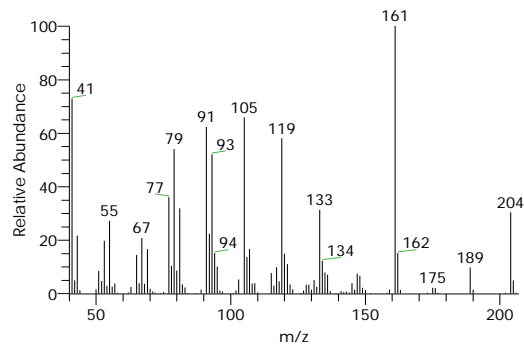
ç-Muurolene
Formula C15H24, MW 204, CAS# 30021-74-0, Entry# 24843



Naphthalene, 1,2,4a,5,6,8a-hexahydro-4,7-dimethyl-1-(1-methylethyl)-
Formula C15H24, MW 204, CAS# 483-75-0, Entry# 24889
1-Isopropyl-4,7-dimethyl-1,2,4a,5,6,8a-hexahydronaphthalene #



SI 932, RSI 945, replib, Entry# 24843, CAS# 30021-74-0, ç-Muurolene



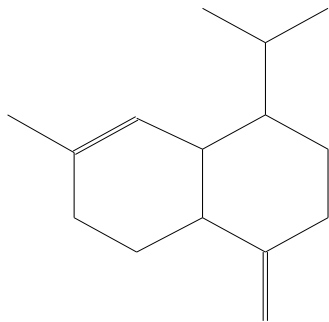
My GC-MS Report

Compound Structure

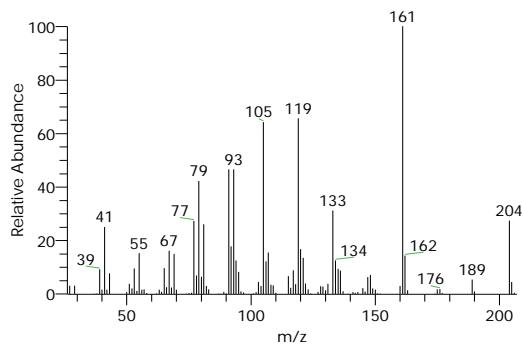
Hit Spectrum

ç-Muurolene

Formula C₁₅H₂₄, MW 204, CAS# 30021-74-0, Entry# 24906

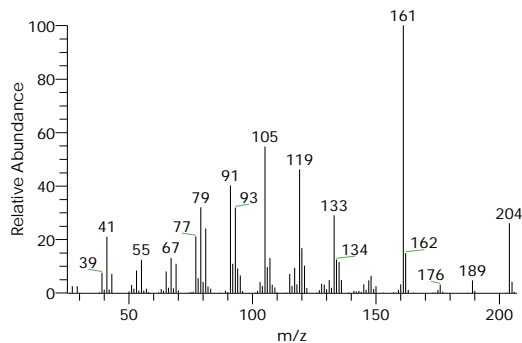
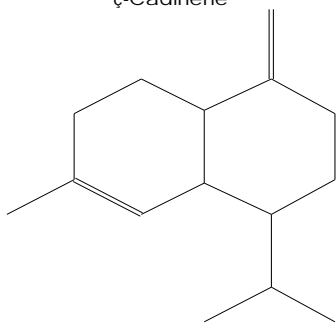


SI 917, RSI 926, replib, Entry# 24906, CAS# 30021-74-0, ç-Muurolene



Formula C₁₅H₂₄, MW 204, CAS# 39029-41-9, Entry# 24895

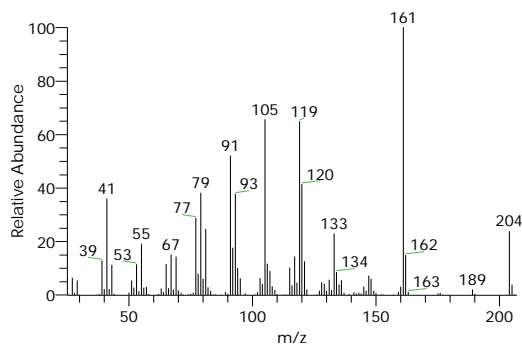
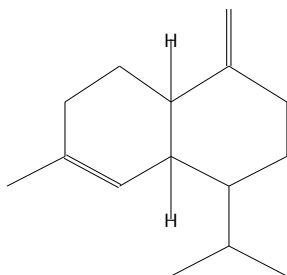
ç-Cadinene



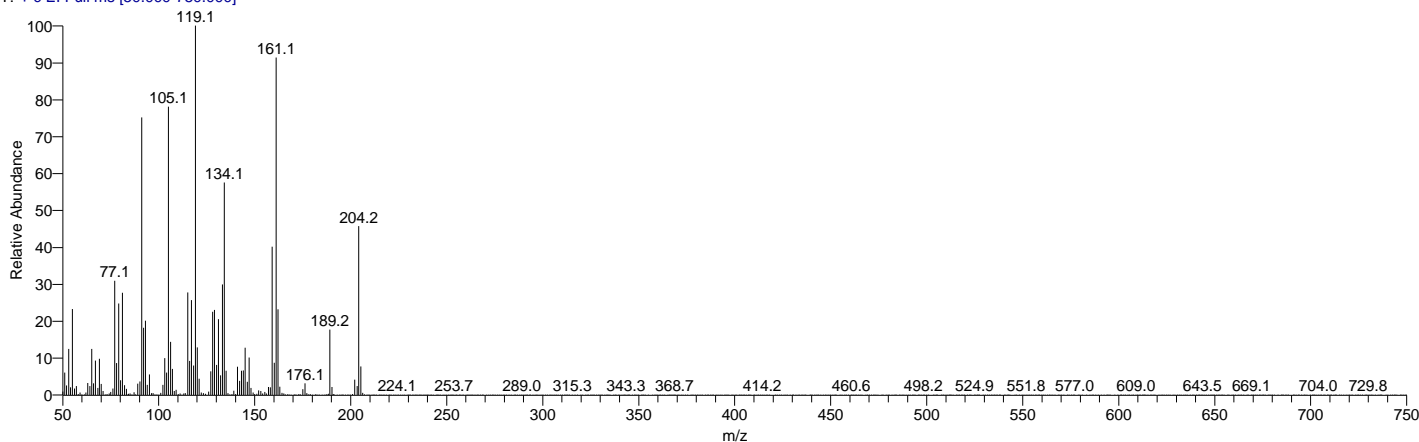
(1S,4aR,8aS)-1-Isopropyl-7-methyl-4-methylene-1,2,3,4,4a,5,6,8a-octahydronaphthalene

Formula C₁₅H₂₄, MW 204, CAS# 6980-46-7, Entry# 150501

ç-Amorphene



Rosemary_Oil #2680 RT: 12.98 AV: 1 NL: 3.94E6
T: + c EI Full ms [50.000-750.000]



RT	Compound Name	Area %	MF	Molecular Formula	Molecular Weight	Cas #	Library
12.98	NAPHTHALENE, 1,2,3,5,6,8A-HEXAHYDRO-4,7-DI METHYL-1-(1-METHYLETHYL)-, (1S-CIS)-	0.39	928	C ₁₅ H ₂₄	204	483-76 -1	WileyRegi stry8e

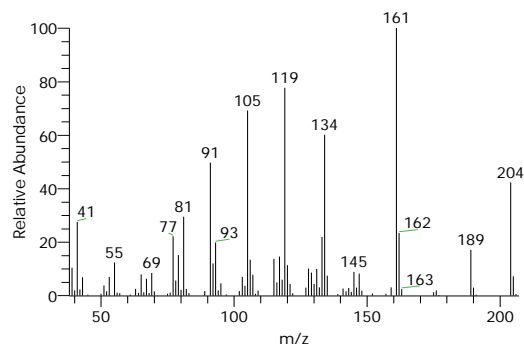
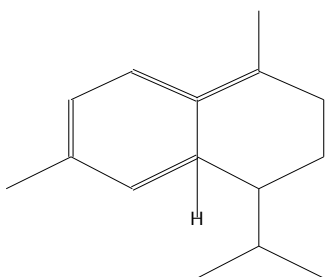
My GC-MS Report

RT	Compound Name	Area %	MF	Molecular Formula	Molecular Weight	Cas #	Library
12.98	Naphthalene, 1,2,3,5,6,8a-hexahydro-4,7-dimethyl- 1-(1-methylethyl)-, (1S-cis)-	0.39	911	C15H24	204	483-76-1	replib
12.98	1-Isopropyl-4,7-dimethyl-1,2,3,5,6,8a- -hexahydronaphthalene	0.39	913	C15H24	204	16729-01-4	mainlib
12.98	NAPHTHALENE, 1,2,3,5,6,8A-HEXAHYDRO-4,7-DI METHYL-1-(1-METHYLETHYL)-, (1S-CIS)-	0.39	873	C15H24	204	483-76-1	WileyRegi stry8e
12.98	NAPHTHALENE, 1,2,3,5,6,8A-HEXAHYDRO-4,7-DI METHYL-1-(1-METHYLETHYL)-, (1S-CIS)-	0.39	863	C15H24	204	483-76-1	WileyRegi stry8e

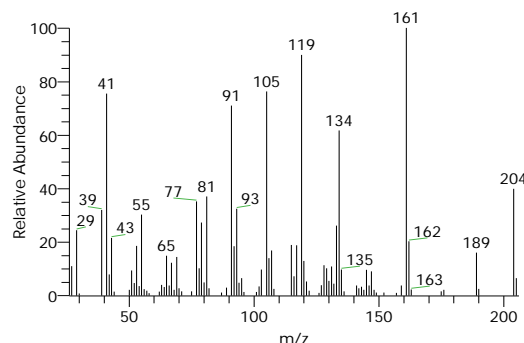
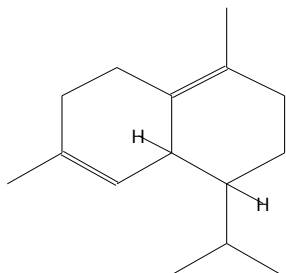
Compound Structure

Hit Spectrum

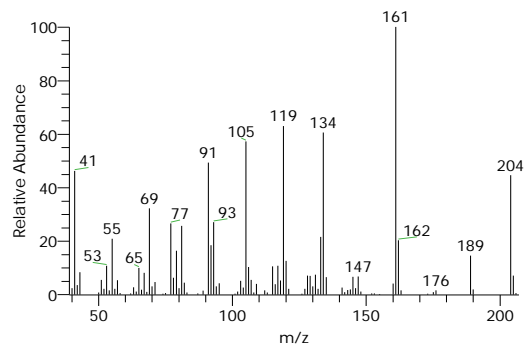
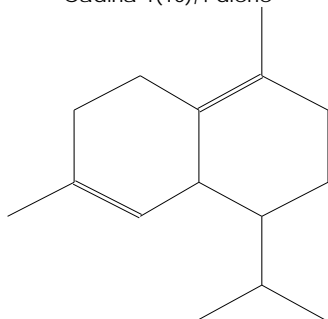
NAPHTHALENE, 1,2,3,5,6,8A-HEXAHYDRO-4,7-DIMETHYL-1-(1-METHYLETHYL)-, (1S-CIS)-
Formula C15H24, MW 204, CAS# 483-76-1, Entry# 89277
1-ISOPROPYL-4,7-DIMETHYL-1,2,3,5,6,8A-HEXAHYDRONAPHTHALENE #



Naphthalene, 1,2,3,5,6,8a-hexahydro-4,7-dimethyl-1-(1-methylethyl)-, (1S-cis)-
Formula C15H24, MW 204, CAS# 483-76-1, Entry# 24907
Cadina-1(10),4-diene



1-Isopropyl-4,7-dimethyl-1,2,3,5,6,8a-hexahydronaphthalene
Formula C15H24, MW 204, CAS# 16729-01-4, Entry# 150583
Cadina-1(10),4-diene



My GC-MS Report

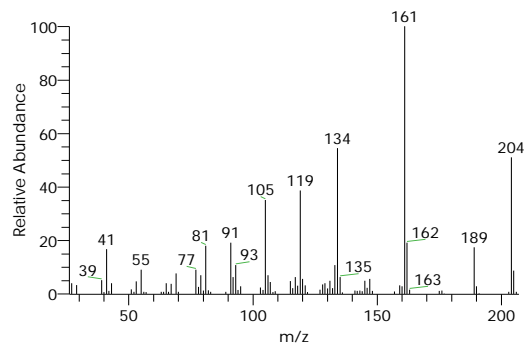
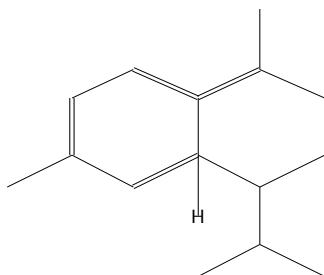
Compound Structure

Hit Spectrum

NAPHTHALENE, 1,2,3,5,6,8A-HEXAHYDRO-4,7-DIMETHYL-1-(1-METHYLETHYL)-, (1S-CIS)-

Formula C₁₅H₂₄, MW 204, CAS# 483-76-1, Entry# 89273

1-ISOPROPYL-4,7-DIMETHYL-1,2,3,5,6,8A-HEXAHYDRONAPHTHALENE #



NAPHTHALENE, 1,2,3,5,6,8A-HEXAHYDRO-4,7-DIMETHYL-1-(1-METHYLETHYL)-, (1S-CIS)-

Formula C₁₅H₂₄, MW 204, CAS# 483-76-1, Entry# 89275

1-ISOPROPYL-4,7-DIMETHYL-1,2,3,5,6,8A-HEXAHYDRONAPHTHALENE #

