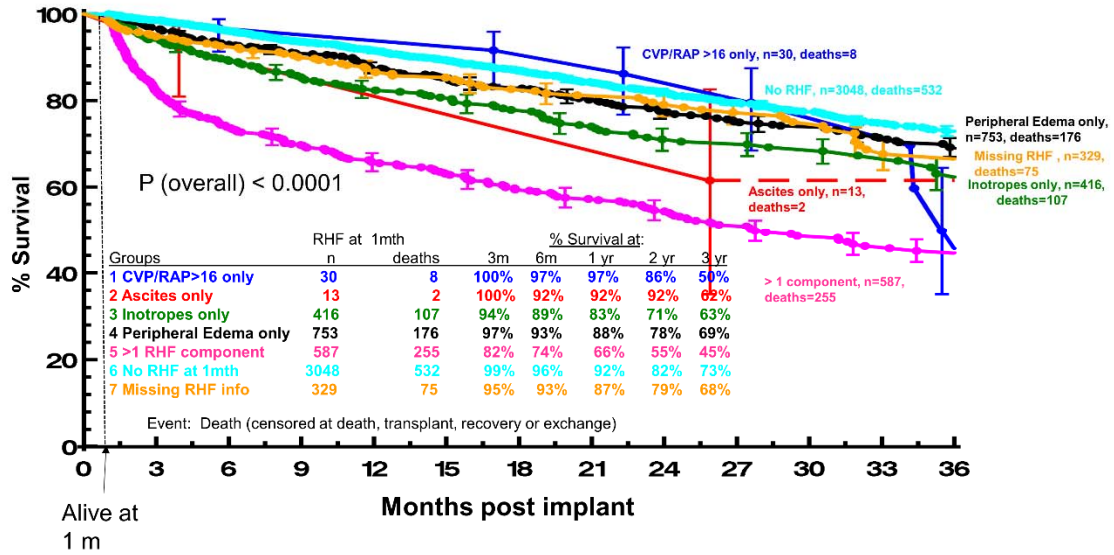


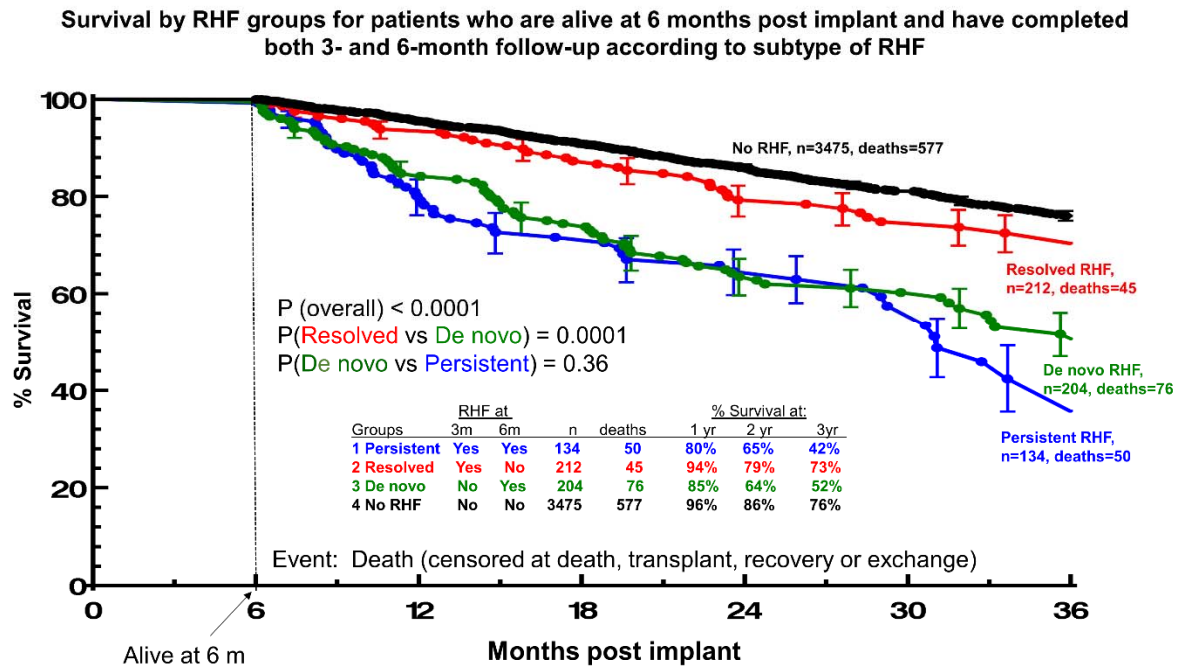
SUPPLEMENTAL MATERIAL

Supplemental Figure 1.

Survival by RHF groups for patients who are alive at 1 month post-implant according to type of RHF manifestation

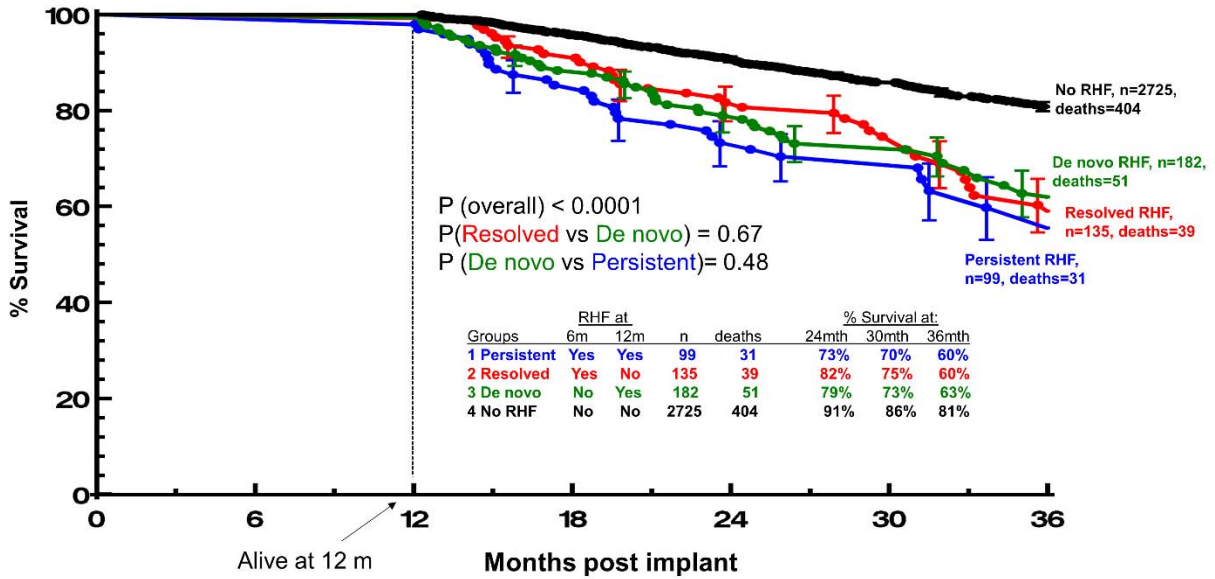


Supplemental Figure 2. Panel a



Supplemental Figure 2. Panel b

Survival by RHF groups for patients who are alive at 12 months post implant and have completed 3-, 6- and 12-month follow-up according to subtype of RHF



Supplemental figure legends

Supplemental Figure 1. Survival by RHF groups for patients who are alive at 1 month post-implant according to type of RHF manifestation. Event was death censored at transplant, recovery or exchange.

Supplemental Figure 2. Panel A. Survival by RHF groups for patients who are alive at 6 months post implant and have completed both 3- and 6-month follow-up according to subtype of RHF. Panel B. Survival by RHF groups for patients who are alive at 12 months post implant and have completed 3-, 6- and 12-month follow-up according to subtype of RHF. Event was death censored at transplant, recovery or exchange.

Supplemental Table 1. Potential Covariates for Modeling

| | |
|--|---|
| Age | History of Alcohol Abuse |
| Married | Pulmonary Vascular Disease |
| Female | History of Stroke |
| White | History of Noncompliance |
| College | Previous Atrial Valve Repair/Replacement |
| Hispanic | Previous Mitral Valve Repair/Replacement |
| INR | Previous Tricuspid Valve Repair/Replacement |
| Sodium | Previous Cardiac Surgery |
| BUN | Left Ventricular Ejection Fraction < 20% |
| SGOT/AST | Cardiac Index |
| Creatinine | Elevated Systolic Blood Pressure > 120 mmHg |
| Bilirubin | Pulmonary Wedge Pressure |
| Albumin | Diastolic Blood Pressure |
| WBC | Left Ventricular End Diastolic Diameter |
| SGPT/ALT | Cardiac Output |
| LDH | Pulmonary Vascular Resistance |
| Right Ventricular Ejection Fraction - Severe | Pulmonary Systolic Pressure |
| Ascites | Mitral Regurgitation (Moderate/Severe) |
| CV Pressure | Pulmonary Diastolic Pressure |
| Inotropes | Tricuspid Regurgitation (Moderate/Severe) |
| Device Strategy | Atrial Regurgitation (Moderate/Severe) |
| Patient Profile | Left Ventricular Assist Device - Centrifugal Flow |
| TCS Modifier | Concomitant Atrial Valve Repair/Replacement |
| Arrhythmia Modifier | Concomitant Mitral Valve Repair/Replacement |
| NYHA 4 | Concomitant Tricuspid Valve Repair/Replacement |
| Ventilator | Concomitant Cardiac Surgery |
| ICD | Coronary Artery Disease |
| Dialysis | RHF reported at 1 month post implant |
| IABP | Pump related infection within 3m post implant |
| Warfarin | Driveline infection within 3m post-implant |
| Visual Analog Scale | Sepsis within 3m post-implant |
| Mobility Issues | Positive blood cultures within 3m post-implant |
| Self-care Issues | Other infections within 3m post-implant |
| Blood Type O | |
| BSA | |
| BMI | |
| Pulmonary Hypertension | |
| Diabetes | |

Supplemental Table 2. Risk Adjusted Survival by RHF groups for patients who are alive at 3 months post-implant and have completed both 1- and 3-month follow-up according to subtype of RHF. Cox proportional hazard model.

| Effect | Hazard Ratio | P-value |
|--|---------------------|----------------|
| Persistent RHF | 2.797 | <0.0001 |
| Denovo RHF | 1.479 | 0.0101 |
| Resolved RHF | 1.282 | 0.0053 |
| Positive Blood Cultures within 3m Post Implant | 2.043 | <0.0001 |
| Previous Cardiac Surgeries | 1.320 | 0.0001 |
| BUN (mg/dL) 5-unit change | 1.025 | 0.0077 |
| Age At Implant | 1.024 | <0.0001 |
| VAS: Own Health State | 0.995 | 0.0116 |
| Albumin (g/dL) | 0.853 | 0.0045 |
| Blood Type O | 0.800 | 0.0011 |
| Married | 0.770 | 0.0004 |

Potential Covariates: Supplemental Table 1

Supplemental Table 3. Risk Adjusted Survival by RHF groups for patients who are alive at 3 months post-implant and have completed both 1- and 3-month follow-up according to subtype of RHF. Completing risk model.

| Effect | Hazard Ratio | P-value |
|--|---------------------|----------------|
| Persistent RHF | 2.600 | <0.0001 |
| Denovo RHF | 1.480 | 0.0122 |
| Resolved RHF | 1.300 | 0.0026 |
| Positive Blood Cultures within 3m Post Implant | 1.833 | 0.0007 |
| Destination Therapy | 1.634 | <0.0001 |
| Previous Cardiac Surgeries | 1.347 | <0.0001 |
| Left Ventricle Assist Device - Centrifugal | 1.229 | 0.0338 |
| Age At Implant | 1.023 | <0.0001 |
| BUN (mg/dL) 5-unit change | 1.022 | 0.0173 |
| LVEF < 20% (severe) (0,1) | 0.856 | 0.0342 |
| Albumin (g/dL) | 0.818 | 0.0004 |
| Hispanic | 0.642 | 0.0137 |

Potential Covariates: Supplemental Table 1