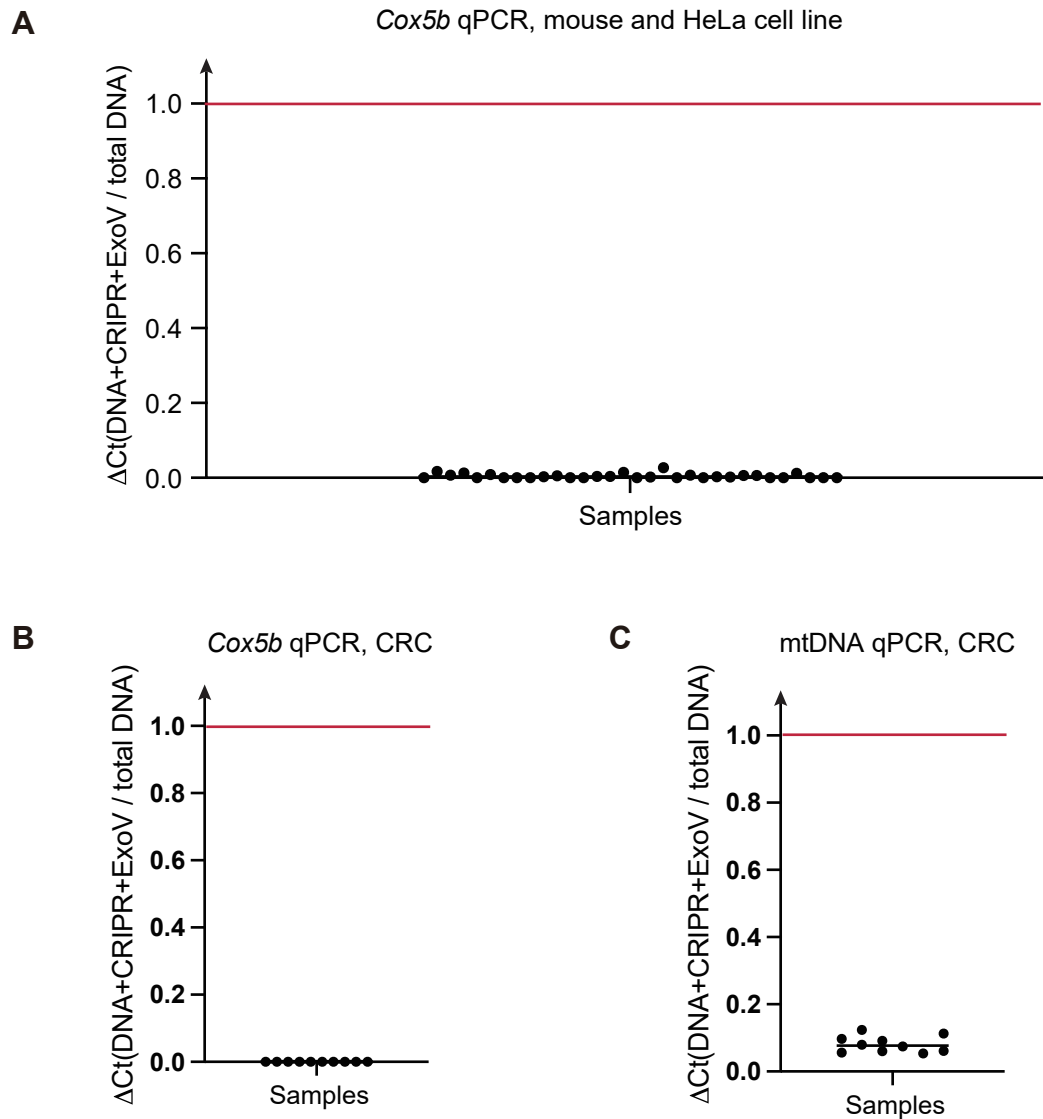


Supplementary Fig.1



Supplementary Fig1. The quality tests for the extracted circular DNA. (A) Quantitative real-time PCR (qPCR) confirmation of the linear DNA removal of mouse and Hela cell line samples. (B) Quantitative real-time PCR (qPCR) confirmation of the linear DNA removal of CRC samples. (C) Quantitative real-time PCR (qPCR) confirmation of the mtDNA removal of CRC samples. Value 1 (red bar) represents the amount of total DNA before CRISPR and Exonuclease V (ExoV) treatment to remove mtDNA and linear DNA. Mouse-*Cox5b* Forward primer: CAGGGT-GACTGACGCCAC, Reverse primer: CAGCCGAAGCAGCGCTAAAA; HeLa-*Cox5b* Forward primer: GGGCAC-CATTTTCCTTGATCAT, Reverse primer: AGTCGCCTGCTCTTCATCAG; CRC-*Cox5b* Forward primer: GGACAAT-ACCAGCGTCGTCT, Reverse primer: TAGTGCAGGTGCTCAGTGTG; CRC-mtDNA Forward primer: GCCCACT-TCCACTATGTCCT, Reverse primer: GATTTTGGCGTAGGTTTGGTCT