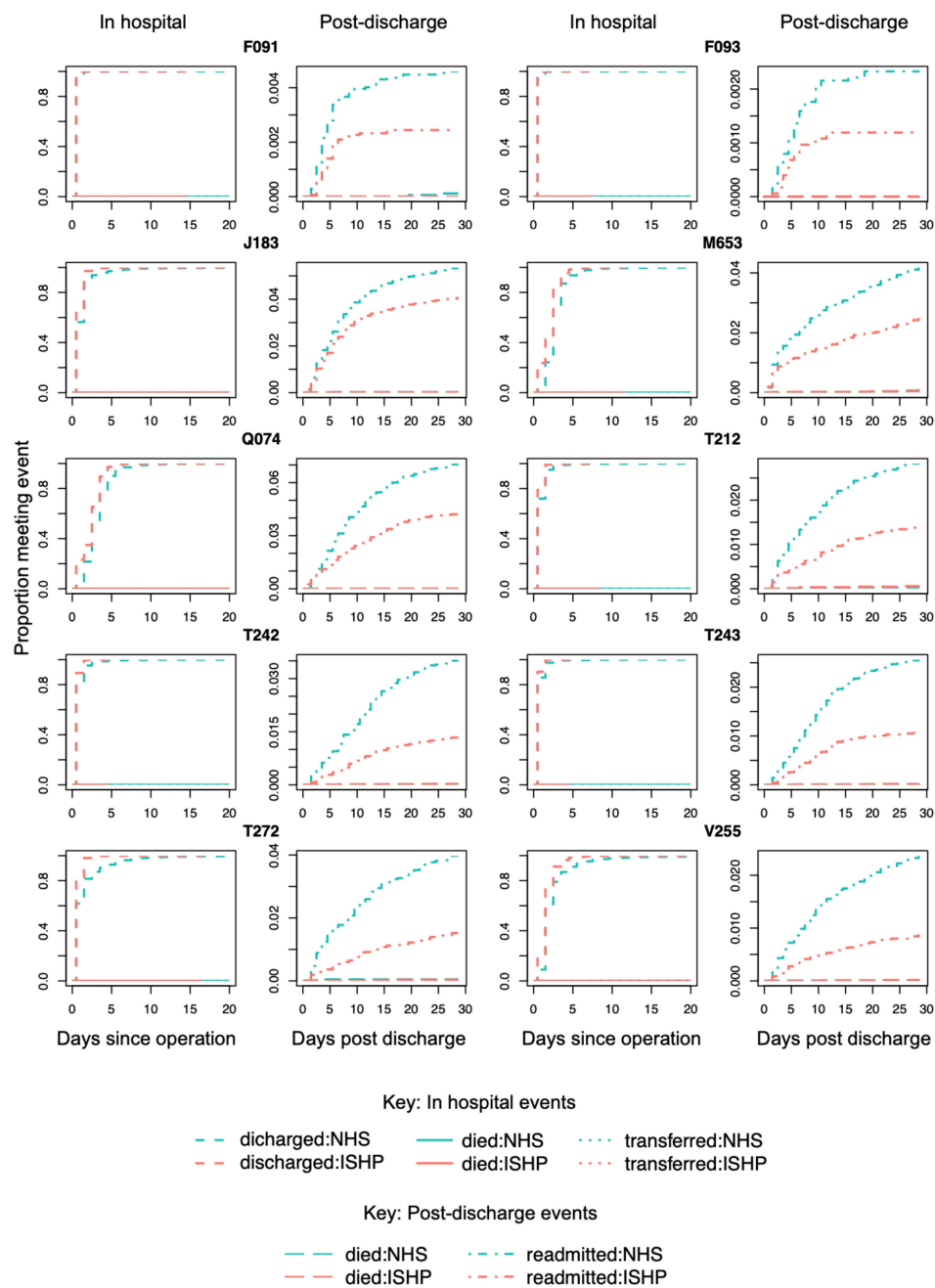
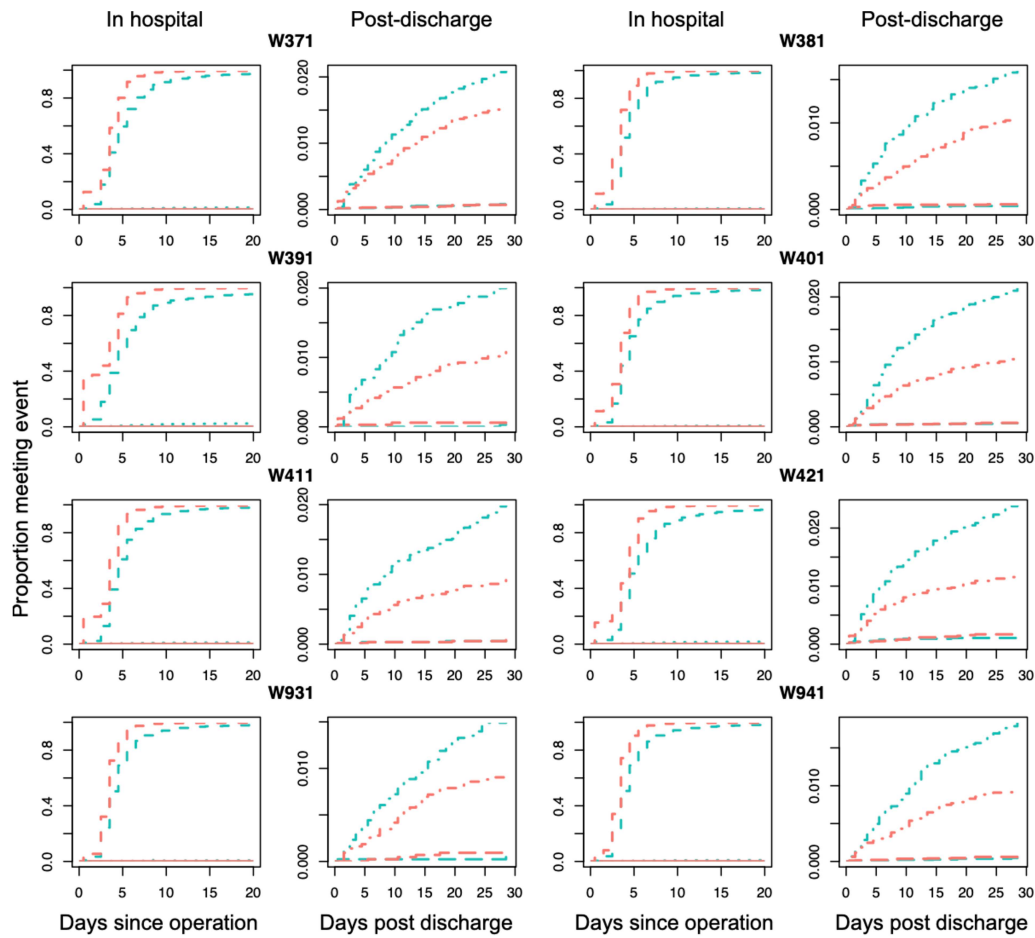


Supplementary Figure 3. Cumulative incidence of events by operation type and provider type (NHS vs ISHP). First and third columns: Cumulative incidence of all in-hospital events post-operation. Second and fourth columns: Cumulative incidence of post-discharge events. Events occurring within the same time frame (in hospital or post-discharge) are considered as competing risks.



Supplementary Figure 3 cont.



Key: In hospital events

- - - discharged:NHS
- - - discharged:ISHP
- died:NHS
- died:ISHP
- ... transferred:NHS
- ... transferred:ISHP

Key: Post-discharge events

- died:NHS
- died:ISHP
- - - readmitted:NHS
- - - readmitted:ISHP