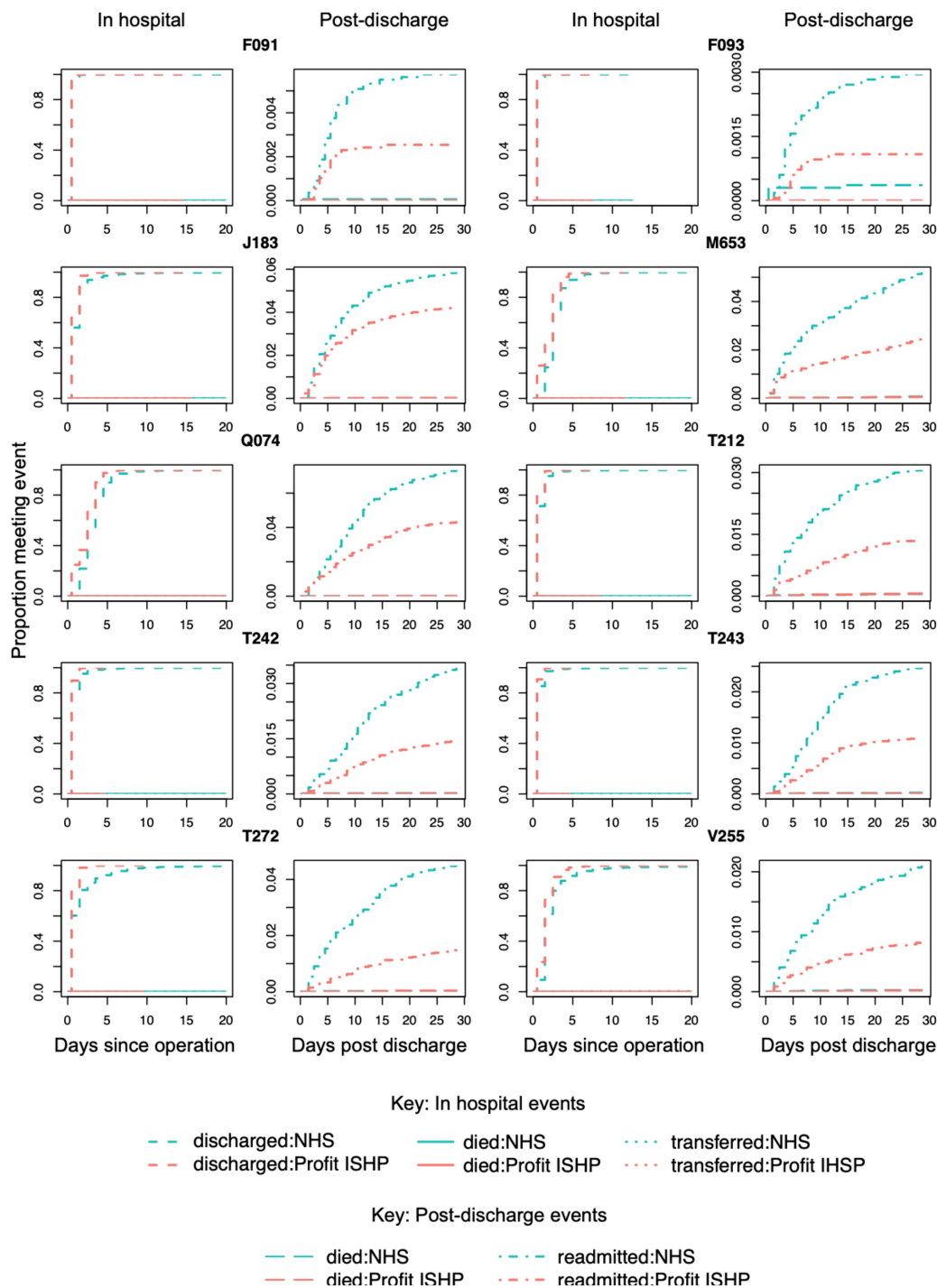
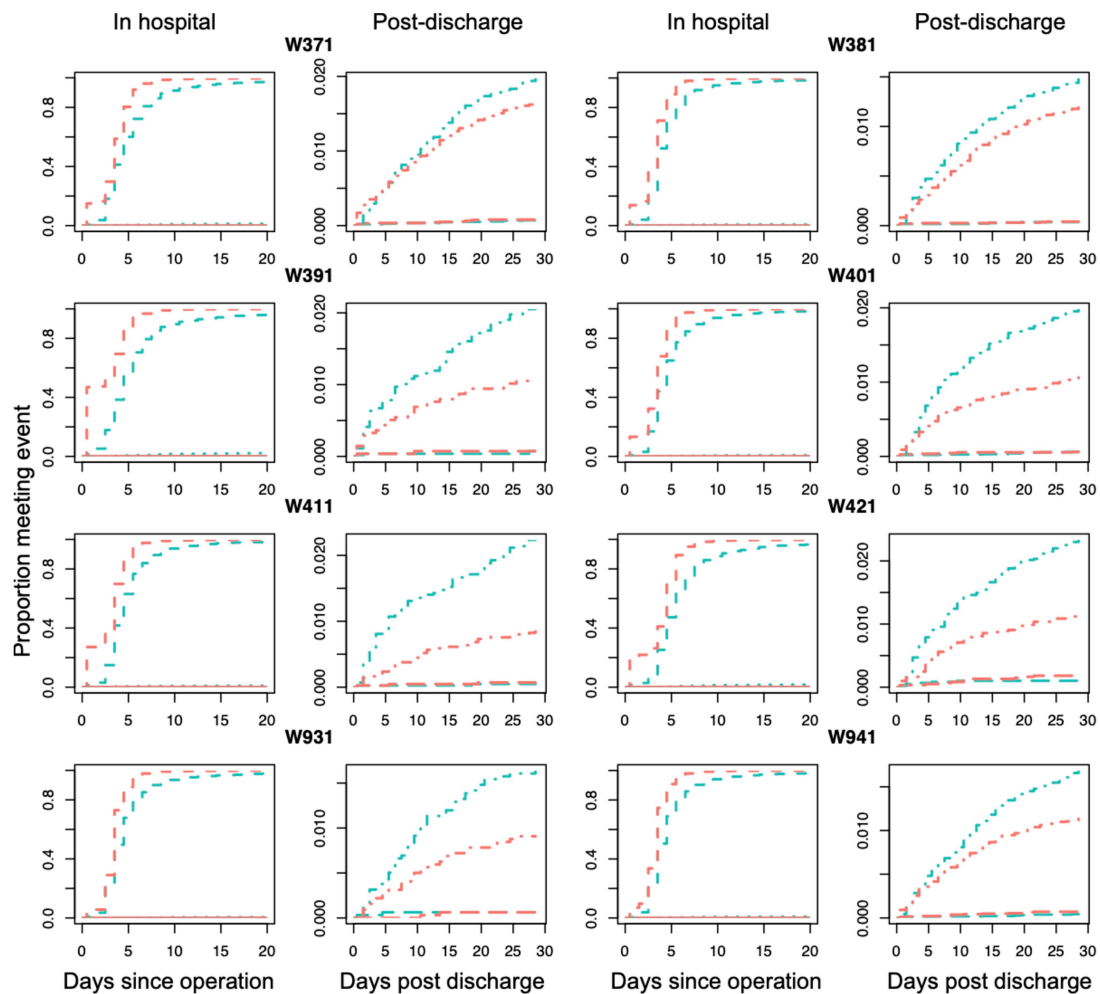


**Supplementary Figure 4. Cumulative incidence of events by operation type and provider type (NHS vs for-profit ISHP).** First and third columns: Cumulative incidence of all in-hospital events post-operation. Second and fourth columns: Cumulative incidence of post-discharge events. Events occurring within the same time frame (in hospital or post-discharge) are considered as competing risks.



Supplementary Figure 4 (cont)



Key: In hospital events

- discharged:NHS      — died:NHS      ... transferred:NHS
- discharged:Profit ISHP      — died:Profit ISHP      ... transferred:Profit IHSP

Key: Post-discharge events

- died:NHS      - - - readmitted:NHS
- died:Profit ISHP      - - - readmitted:Profit ISHP