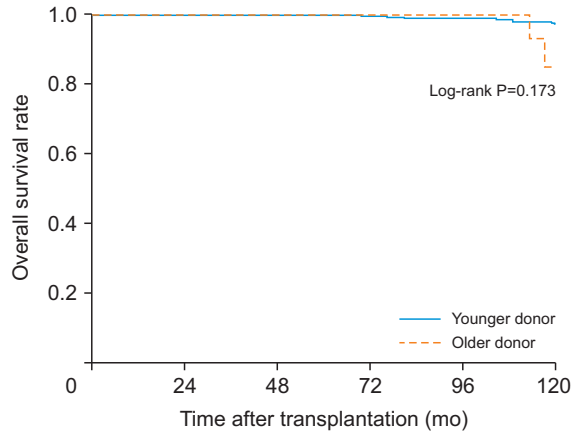


**Supplementary Table 1.** Donor age and risk of patient death

| Risk factor                               | Univariable          |         | Multivariable <sup>a)</sup> |         |
|---|----------------------|---------|-----------------------------|---------|
|   | HR (95% CI)          | P-value | HR (95% CI)                 | P-value |
| <b>Recipient</b>                          |                      |         |                             |         |
| Age                                       | 1.091 (1.052–1.131)  | <0.001  | 1.083 (1.043–1.125)         | <0.001  |
| Male                                      | 1.546 (0.750–3.188)  | 0.238   |                             |         |
| BMI                                       | 1.075 (0.978–1.182)  | 0.134   |                             |         |
| DM  | 2.703 (1.248–5.853)  | 0.012   | 1.504 (0.669–3.382)         | 0.324   |
| HTN                                       | 0.758 (0.312–1.840)  | 0.541   |                             |         |
| Underlying kidney disease 2 <sup>b)</sup> |                      | 0.030   |                             |         |
| DM nephropathy                            |                      | ref     |                             |         |
| GN (IgA, FSGS, others)                    | 0.170 (0.052–0.554)  | 0.003   |                             |         |
| ADPCK                                     | 0.330 (0.042–2.608)  | 0.293   |                             |         |
| Hypertensive                              | 0.522 (0.193–1.410)  | 0.200   |                             |         |
| Other and UK                              | 0.334 (0.140–0.798)  | 0.014   |                             |         |
| Dialysis duration                         | 1.070 (0.885–1.294)  | 0.486   |                             |         |
| Pre-emptive KT <sup>c)</sup>              | 0.962 (0.416–2.223)  | 0.927   |                             |         |
| HLA mismatch                              | 1.097 (0.875–1.375)  | 0.424   |                             |         |
| DSA-positive                              | 0.992 (0.056–17.453) | 0.996   |                             |         |
| Induction agent                           |                      | 0.771   |                             |         |
| Maintenance regimen                       |                      | 0.234   |                             |         |
| <b>Donor</b>                              |                      |         |                             |         |
| Male                                      | 1.118 (0.563–2.218)  | 0.751   |                             |         |
| BMI                                       | 1.027 (0.928–1.136)  | 0.609   |                             |         |
| DM  | 3.309 (0.191–57.37)  | 0.411   |                             |         |
| HTN                                       | 2.224 (0.301–16.426) | 0.433   |                             |         |
| Cr  | 0.853 (0.095–7.660)  | 0.887   |                             |         |
| Older donor group <sup>d)</sup>           | 2.611 (0.622–10.963) | 0.190   | 2.240 (0.521–9.637)         | 0.2787  |

HR, hazard ratio; CI, confidence interval; BMI, body mass index; DM, diabetes mellitus; HTN, hypertension; GN, glomerulonephritis; IgA, immunoglobulin A; FSGS, focal segmental glomerulosclerosis; ADPCK, autosomal dominant polycystic kidney disease; UK, unknown; KT, kidney transplantation; HLA, human leukocyte antigen; DSA, donor-specific anti-HLA antibody; Cr, Creatinine.

<sup>a)</sup>Variables with a P-value of less than 0.1 in the univariable analysis were included in the multivariable analysis; <sup>b)</sup>Underlying kidney disease 2 and R\_DM have a high relationship; if both variables had P<0.1, only R\_DM was included in multivariable analysis; <sup>c)</sup>Pre-emptive KT was defined as kidney transplantation after a dialysis duration of less than 30 days; <sup>d)</sup>Reference is younger donor group, which is the group of KT donor younger than 60 years old.



| No. at risk   |     |     |     |     |     |     |
|---------------|-----|-----|-----|-----|-----|-----|
| Younger donor | 826 | 826 | 826 | 752 | 612 | 473 |
| Older donor   | 33  | 33  | 33  | 27  | 17  | 10  |

**Supplementary Fig. 1.** Patient survival rate. Kaplan-Meier curve of patient survival rate after living kidney transplantation.