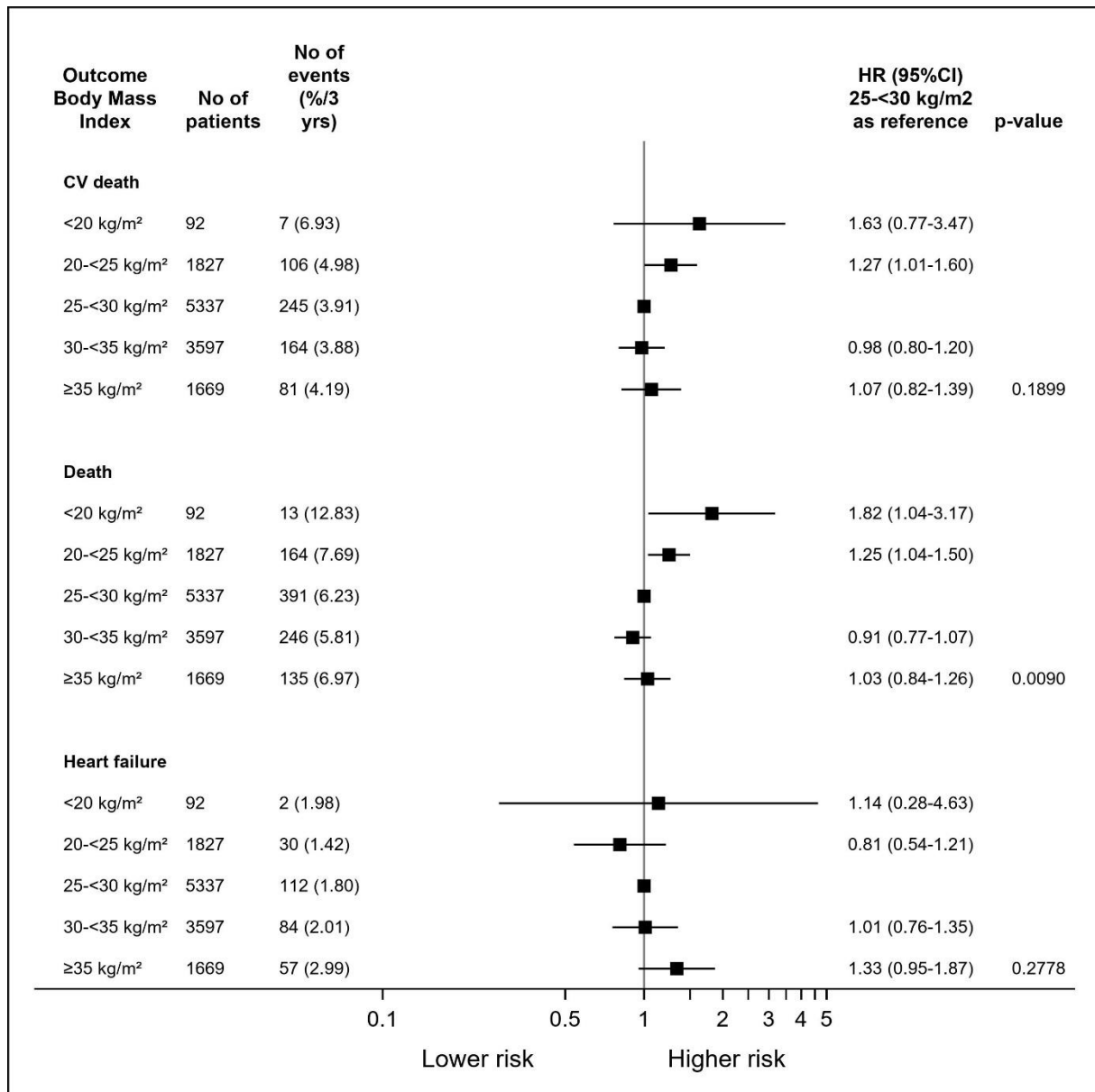


SUPPLEMENTAL MATERIAL

Figure S1A. The association of body mass index (BMI) with clinical outcomes (adjusted). Non-Asian population.



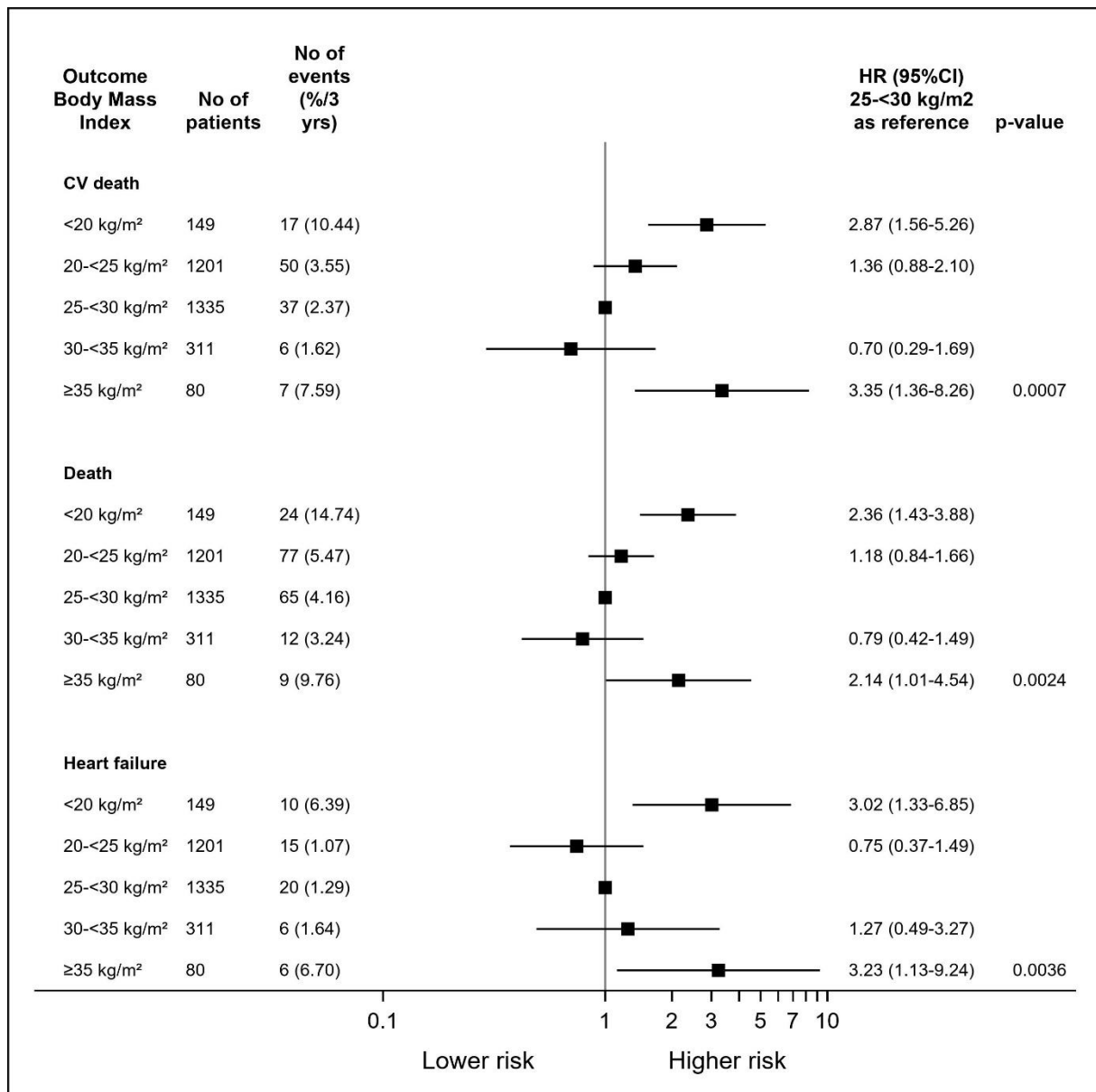
BMI 25<30 kg/m² as reference

Adjusted for age, sex, randomized treatment, prior percutaneous coronary intervention (PCI)/coronary artery bypass grafting (CABG), prior MI, renal dysfunction, polyvascular disease, diabetes, smoking, stroke/transient ischemic attack (TIA), congestive heart failure, systolic blood pressure, geographic region, chronic obstructive pulmonary disease (COPD), cancer diagnosis and Asian/Japanese origin.

P-value denotes difference between groups.

CV, cardiovascular; MACE, major adverse cardiovascular event; MI, myocardial infarction.

Figure S1B. The association of body mass index (BMI) with clinical outcomes (adjusted).
Asian population.



BMI 25<30 kg/m² as reference

Adjusted for age, sex, randomized treatment, prior percutaneous coronary intervention (PCI)/coronary artery bypass grafting (CABG), prior MI, renal dysfunction, polyvascular disease, diabetes, smoking, stroke/transient ischemic attack (TIA), congestive heart failure, systolic blood pressure, geographic region, chronic obstructive pulmonary disease (COPD), cancer diagnosis and Asian/Japanese origin.

P-value denotes difference between groups.

CV, cardiovascular; MACE, major adverse cardiovascular event; MI, myocardial infarction.