

## **SUPPLEMENTAL MATERIAL**

**Table S1.** Trends in age-standardized rates of adverse pregnancy outcomes per 1,000 live births in women aged 15-44 years in the US, 2007-2019

Year	Age-standardized rates (95% CI)		
	HDP rate	LBW rate	PTD rate
2007	38.4 (38.2, 38.6)	81.3 (81.0, 81.5)	103.6 (103.3, 103.9)
2008	38.9 (38.8, 39.1)	80.9 (80.7, 81.2)	103.0 (102.7, 103.3)
2009	40.9 (40.7, 41.0)	80.8 (80.5, 81.1)	100.2 (99.9, 100.6)
2010	43.4 (43.2, 43.6)	80.8 (80.5, 81.1)	99.3 (99.0, 99.6)
2011	43.8 (43.6, 44.0)	80.5 (80.2, 80.7)	97.5 (97.2, 97.8)
2012	45.9 (45.6, 46.1)	79.6 (79.3, 79.9)	97.1 (96.8, 97.4)
2013	48.1 (47.9, 48.3)	80.0 (79.7, 80.3)	95.7 (95.4, 96.0)
2014	50.6 (50.3, 50.8)	79.9 (79.7, 80.2)	95.2 (94.9, 95.5)
2015	55.9 (55.7, 56.1)	80.7 (80.5, 81.0)	95.8 (95.4, 96.1)
2016	59.6 (59.4, 59.9)	81.9 (81.6, 82.2)	97.9 (97.6, 98.2)
2017	64.4 (64.1, 64.6)	83.0 (82.7, 83.3)	98.6 (98.3, 99.0)
2018	71.6 (71.4, 71.9)	83.1 (82.8, 83.4)	99.4 (99.1, 99.7)
2019	77.8 (77.5, 78.1)	83.4 (83.1, 83.7)	101.3 (101.0, 101.7)

APO = adverse pregnancy outcome; HDP = hypertensive disorder of pregnancy; LBW = low birth weight; PTD = preterm delivery

**Table S2.** Average annual percent change in rates of age-standardized rates of adverse pregnancy outcome subtypes per 1,000 live births, by race/ethnicity groups, in women aged 15-44 years in the United States, 2007-2019

	Average Annual Percent Change (95% CI)		
	2007-2019	2007-2014	2014-2019
<b>HDP, by race/ethnicity</b>			
Non-Hispanic White	5.8 (5.3, 6.2)*	3.3 (2.8, 3.9)*	9.2 (8.3, 10.2)*
Non-Hispanic Black	6.0 (5.4, 6.5)*	4.5 (3.8, 5.1)*	8.0 *6.9, 9.2)*
Hispanic	7.5 (6.8, 8.2)*	6.2 (5.4, 7.1)*	9.3 (8.1, 10.5)*
Asian	6.9 (5.0, 7.9)*	4.7 (3.5, 6.0)*	10.1 (7.9, 12.3)*
<b>LBW, by race/ethnicity</b>			
Non-Hispanic White	-0.2 (-0.4, 0.0)*	-0.5 (-0.7, -0.2)*	0.2 (-0.1, 0.5)
Non-Hispanic Black	0.0 (0.0, 0.1)	-0.8 (-0.8, -0.7)*	1.2 (1.0, 1.3)*
Hispanic	0.7 (0.5, 0.9)*	0.4 (0.1, 0.6)*	1.1 (0.9, 1.4)*
Asian	0.3 (0.0, 0.6)*	0.3 (0.0, 0.6)*	0.3 (0.0, 0.6)*
<b>PTD, by race/ethnicity</b>			
Non-Hispanic White	-0.5 (-0.7, -0.3)*	-1.5 (-1.7, -1.3)*	1.0 (0.6, 1.4)*
Non-Hispanic Black	-0.5 (-0.6, -0.3)*	-1.6 (-1.9, -11.7)*	1.2 (1.0, 1.4)*
Hispanic	0.4 (0.2, 0.7)*	-0.6 (-0.9, -0.2)*	1.9 (1.3, 2.5)*
Asian	-0.3 (-0.6, 0.0)	-1.2 (-1.6, -0.8)*	0.9 (0.2, 1.6)*

\*Indicates that the average annual percent change is significantly different from zero at the alpha = 0.05 level.

APO reflects adverse pregnancy outcome; CI confidence interval

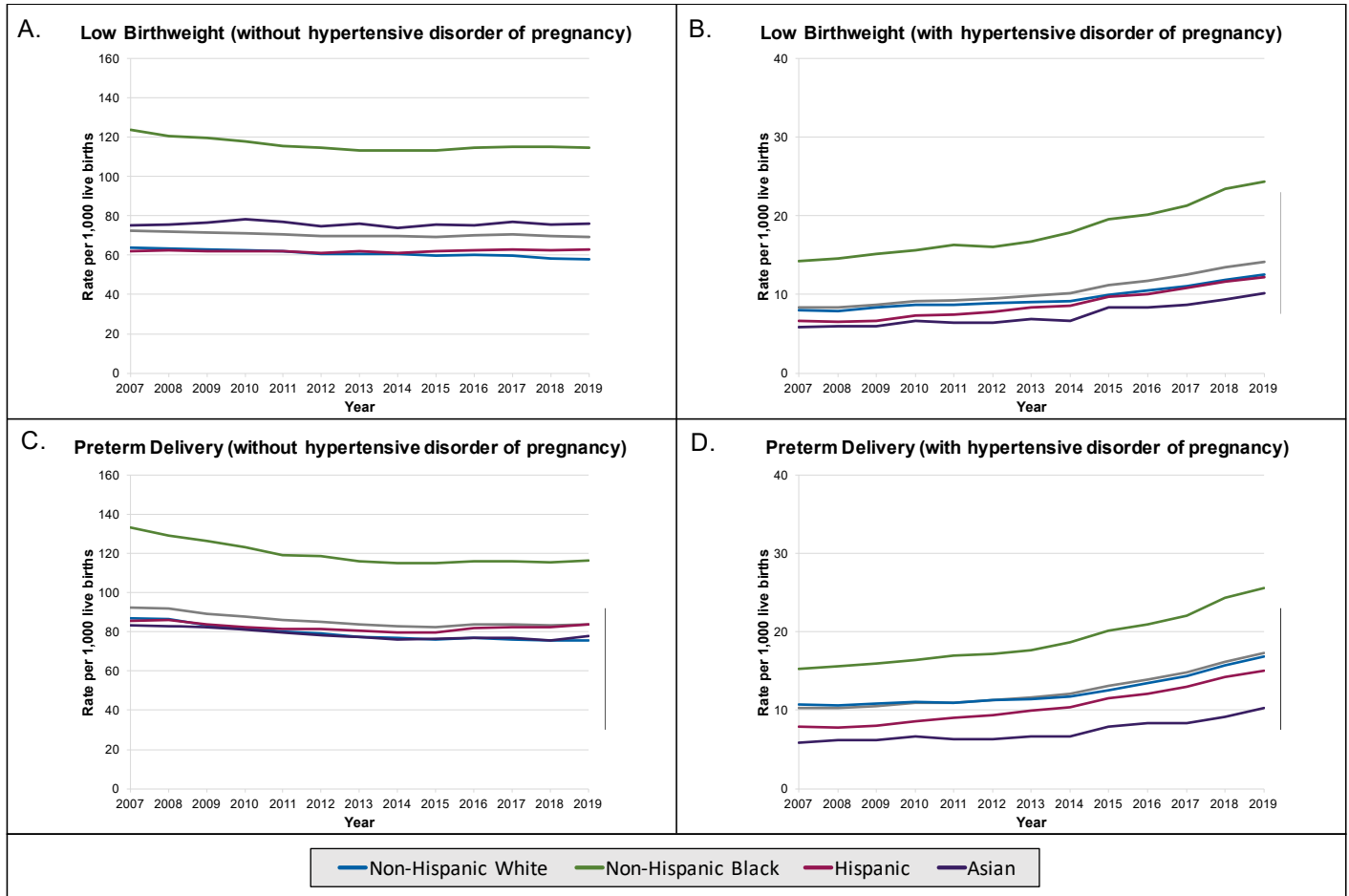
**Table S3.** Average annual percent change (95% confidence interval) in the age-specific rates of adverse pregnancy outcomes per 1,000 live births in women aged 15-44 years in the United States, 2007-2019

	<b>Average Annual Percent Change (95% CI)</b>		
	<b>2007-2019</b>	<b>2007-2014</b>	<b>2014-2019</b>
<b>HDP, by age intervals</b>			
15-19	6.1 (5.6, 6.7)*	4.4 (3.7, 5.1)*	8.7 (7.7, 9.6)*
20-24	6.4 (5.9, 6.8)*	3.7 (3.1, 4.2)*	10.2 (9.2, 11.3)*
25-29	6.0 (5.5, 6.5)*	3.8 (3.2, 4.4)*	9.1 (8.0, 10.2)*
30-34	6.2 (5.7, 6.7)*	4.4 (3.7, 5.0)*	8.9 (7.7, 10.0)*
35-39	6.1 (5.7, 6.5)*	4.8 (4.4, 5.3)*	7.9 (7.3, 8.6)*
40-44	6.1 (5.6, 6.5)*	6.1 (5.6, 6.5)*	6.1 (5.6, 6.5)*
<b>LBW, by age intervals</b>			
15-19	0.2 (-0.2, 0.7)	-0.6 (-1.1, -0.1)*	1.5 (0.8, 2.1)*
20-24	0.3 (-0.1, 0.8)	0.0 (-0.3, 0.3)	0.8 (-0.3, 2.0)
25-29	0.4 (0.2, 0.6)*	-0.1 (-0.3, 0.2)	1.1 (0.8, 1.3)*
30-34	0.1 (0.0, 0.2)	-0.3 (-0.5, -0.2)*	0.7 (0.4, 1.0)*
35-39	0.0 (-0.3, 0.2)	-0.3 (-0.6, 0.0)*	0.4 (0.0, 0.8)
40-44	-0.1 (-0.3, 0.0)	-0.1 (-0.3, 0.0)	-0.1 (-0.3, 0.0)
<b>PTD, by age intervals</b>			
15-19	-0.3 (-0.7, 0.2)	-1.2 (-1.8, -0.7)*	1.1 (0.4, 1.8)*
20-24	-0.1 (-0.3, 0.0)	-1.2 (-1.4, -1.0)*	1.5 (1.2, 1.8)*
25-29	-0.1 (-0.3, 0.1)	-1.3 (-1.6, -1.1)*	1.6 (1.1, 2.2)*
30-34	-0.3 (-0.6, -0.1)*	-1.3 (-1.6, -1.0)*	1.1 (0.6, 1.6)*
35-39	-0.3 (-0.5, 0.0)*	-1.1 (-1.4, 0.8)*	0.8 (0.4, 1.2)*
40-44	0.0 (-0.4, 0.4)	-0.3 (-0.9, 0.3)	0.4 (0.0, 0.9)*

\*Indicates that the average annual percent change is significantly different from zero at the alpha = 0.05 level.

CI = confidence interval

**Figure S1.** Trends in age-standardized rates of low birthweight, without (Panel A) and with (Panel B) the presence of hypertensive disorders of pregnancy, and preterm delivery, without (Panel C) and with (Panel D) the presence of hypertensive disorders of pregnancy, stratified by race/ethnicity groups, in all live births in women aged 15-44 years in the US, 2007-2019.



**Figure S2.** Trends in age-standardized rates of adverse pregnancy outcomes per 1,000 live births in nulliparous mothers with singleton births compared to all live births in women aged 15-44 years in the US, 2007-2019, for hypertensive disorders of pregnancy (Panel A), low birthweight (Panel B), and preterm delivery (Panel C)

